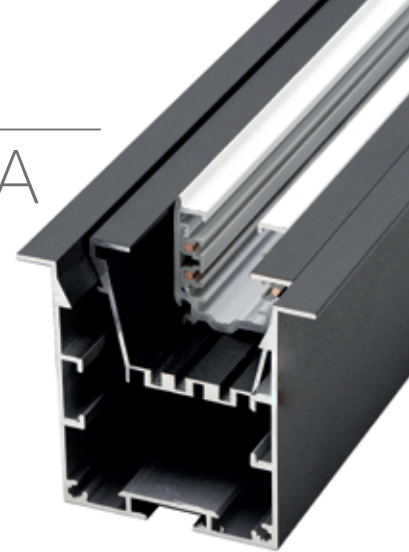


led profile by Luz Negra

Our PROFESSIONAL led profile series for recessing applications is manufactured in high purity aluminium and lacquered in white or textured black. Drivers can be housed inside. The tray can be removed from the front which means easy maintenance. Also, this tray can be combined also with a "Global" 3 phase rail in order to hang spotlights. For safety we recommend fixing a braided cable from the profile base to the tray. Both profile and cover are available in 3.4m lengths. **We offer a 2 year guarantee on the profiles and covers.**

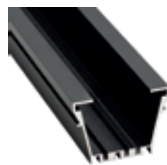
KRAKOVIA

with tray and "Global"
3-phase rail



Aluminium profile

14.012 textured white 3.40m
14.013 textured black 3.40m



Aluminium tray

14.016 textured white 3.40m
14.017 textured black 3.40m



Trellis

16.019 textured white 3m
16.020 textured black 3m



Joint between profiles

22.044 steel set of 2 units



Aluminium endcaps

19.202 white
19.203 black



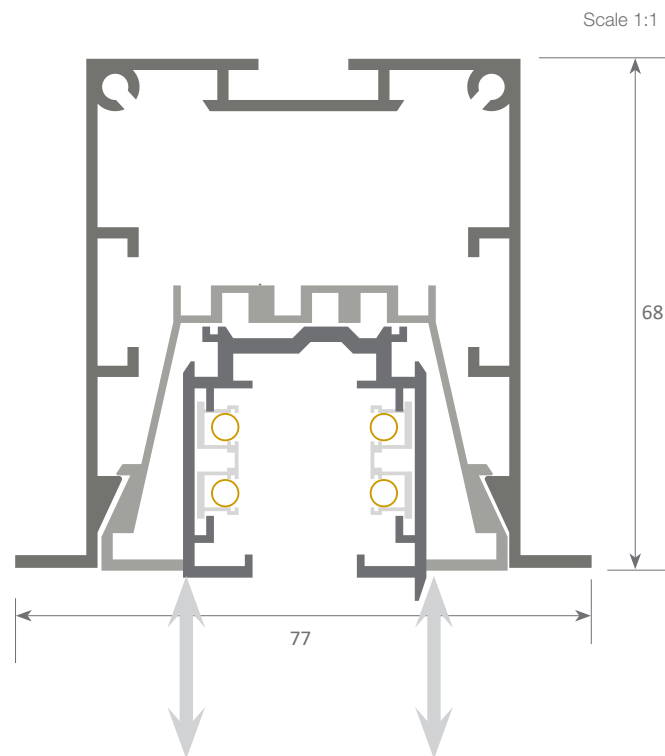
Fixing bracket

20.047 steel



Safety cable

22.039 steel 18 cm



System with front removable tray which permits easy access to the led strip and power supply, therefore allowing very fast and simple maintenance of the electrical installation.



Aluminium alloy extrusion process in accordance with: ISO 9001:2008 - ISO 14001 / Tolerances: UNE-EN 755-9 / UNE-EN 12020-2
Theoretical weight: 1.202Kg / Alloy: 6060 / Perimeter: 552mm / Anodising minimum: 15 microns
Purity aluminium: 95-98% / Treatment: T-5