

ecoled



· Led strip at 230V	254
· New items and special series	264
· Standard flexible strips	274
· Flexible strips with digital led	292
· Flexible panels	296
· Rigid led strips	296
· Power supplies	310
· Led drivers	314
· Accessories for leds	330
· Methacrylate optics	336
· Laboratory service	340
· Lighting technology/technical information	342





Luz Negra is a pioneer in the design of led strips, offering excellent quality since 2006. We were the first Spanish company to incorporate silicone as an IP protection system and later on to develop our **“DUO System” (unique on the market)** which guarantees total water-tightness yet maintaining the same flexibility and width of the PCB.

The exclusive water-tightness system, the double layer PCB, the power stabilizer, the high CRI, the thickness of the PCB, the tin silver in the welding, the quality of the phosphorous in the white leds, the brand name of the chip used, the quality of the adhesive tape, amongst other details, make our leds stand out from other makes, **because not all led strips are the same.**

Not all led strips are alike.

Some of the characteristics which make our **ecoled** strips unique;

1. Spanish idea and design.
2. Exclusive “Waterproof DUO” system which guarantees IP67 without widening the PCB and maintains the same flexibility.
3. Double layer PCB (with 3 and 4 ounces) for lower voltage drops and greater cooling of the strip.
4. Adhesive thermal conductive tape on the lower part which quickly transfers the heat to the profile.
5. Stabilizers with Heat Control system which prevent the strip from blowing through overload.



6. Strips with up to 5700 lumens per metre.
7. Full colour strips with CRI greater than 97.
8. COB strips with a steel sheet in the PCB which prevents any breaking due to bending.
9. Very high quality strips directly at 230V which offer a worldwide patent.
10. Special covering in the waterproof strips which prevents yellowing and inflexibility over time.
11. Led strips up to 170 lm/W.

* Please refer to the technical data sheet for each model.

Colour °KELVIN



Custom made led strips

Our vast experience in the design of flexible led strips (since 2006) allows us to manufacture totally customised led strips (according to the order); where the customer can choose from a variety of features, such as the following:

PCB width: minimum 4mm.

Type of led: front or side lighting, SMD 3014-3528-5050-2835-3327, etc.

Water-tightness: from IP20 to IP67. Our waterproof DUO system can also be provided on request.

PCB quality: single or double sided, the thickness can vary, light reflecting properties, etc.

Led Quality: CREE, NICHIA, OSRAM, EPISTAR, etc.

CRI (Colour Rendering Index).

Led colour: warm, cool or neutral white, red, green, blue, amber, RGB, RGB+W, CW+WW.

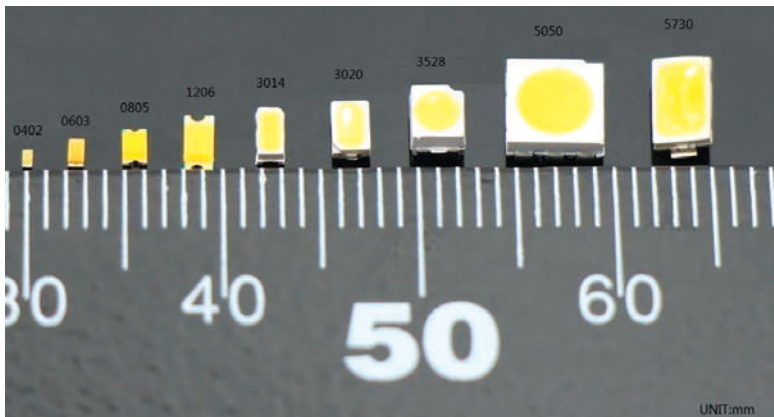
Voltage: 12V-24V.

Led power: from 2.5W up to 40W per metre.

Lighting performance: from 80 up to 100 lumen/W or even greater values.

Length of the roll: 5, 10 or 15 metre. The length of the led strip can be shortened on request.

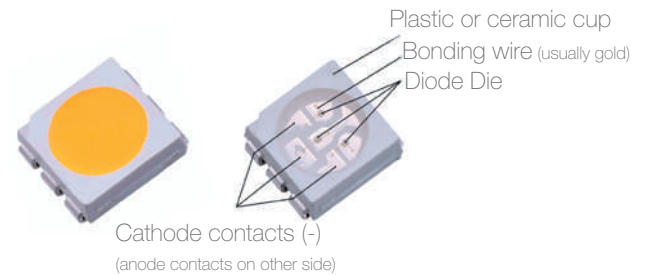
Other elements include **voltage stabiliser**, PCB with the company's logo or printed brand, thermal conductive tape, etc.



Manufacturing process for our flexible led strips

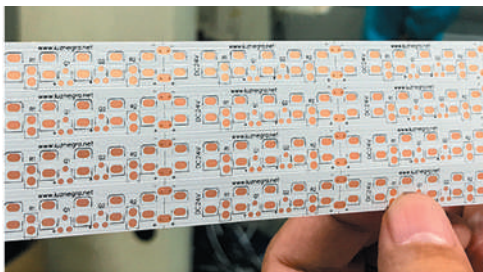


Surface Mounted Device led

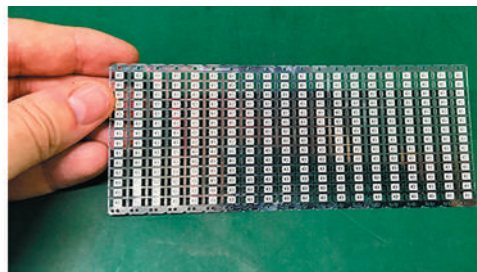


Although the majority of led strips look alike, what makes the difference is the way in which they are manufactured and their components and this is directly reflected in their luminosity, performance, stability, light loss and life span.

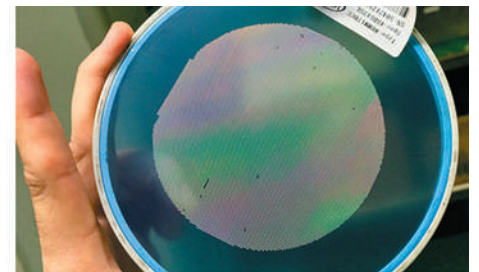
As follows, we highlight the basic steps which are taken in the manufacturing of our led strips:



PCB



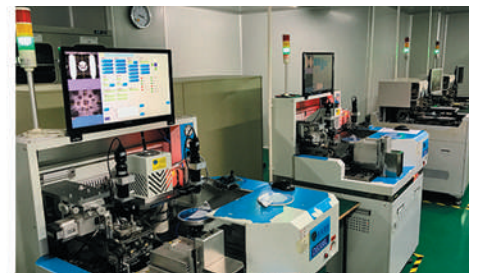
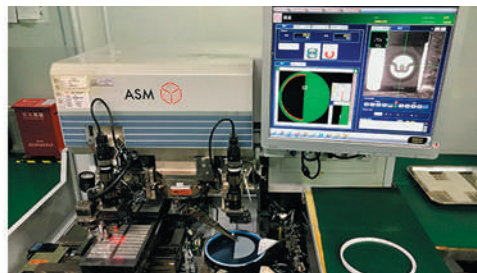
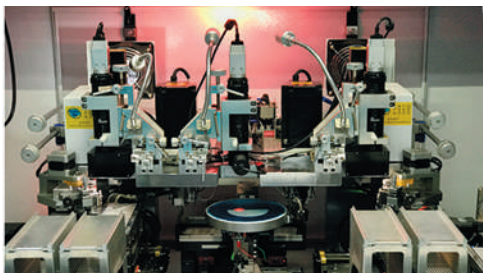
Diodes where the chips are mounted



Base plate with more than 15.000 chips (diodes)

In order to manufacture a led strip we need a base (PCB), on top of which we can find a circuit which generates electrical current and feeds the components which we place on top, such as the SMD leds, power resistors and the current stabilisers. This base is made up of one or two layers which are between one or two ounces (oz) in thickness. A PCB with two layers and increased ounces allows us to achieve a reduced voltage drop and all our strips have two layers.

We also need to mention the die where the chip is placed (the diode which emits the light). This die will be soldered onto the PCB. There are many different types of diode die and can be determined by the quantity of chips to be housed inside and their shape. The most common are 3528-2838-5050-3014-3030-3535-2216-3527.



The machines used have one or two heads, which take the chips from the base plate and then stick them onto the die with a special glue.

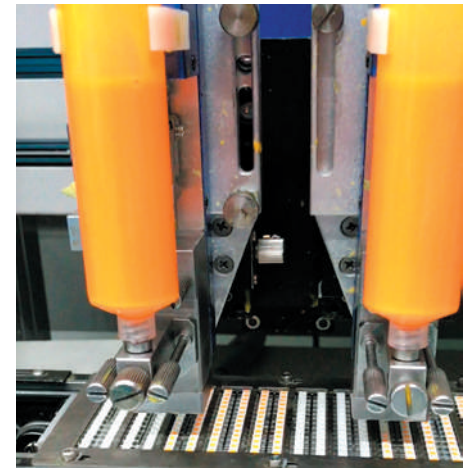


Machine soldering with gold wires

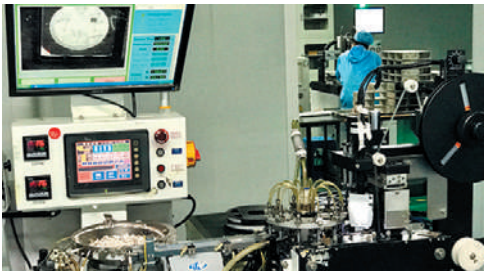
Next the chips wires are soldered onto the die (at Luz Negra we use a high purity gold wire which gives us improved conductivity).

In order to obtain white leds we need to apply a phosphorus layer on top of the blue led. Depending on the composition of this phosphorus we will achieve different tones of white.

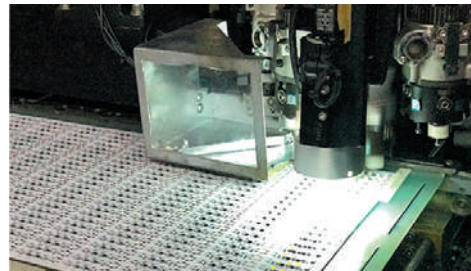
Phosphorus is the yellow layer which we can see in the white leds when they are turned off. If the colour is "lemon" yellow then it will mean cold white (approx 6000°K). If it is "orange-coloured" then it will mean warm white (approx 3000°K).



Machine placing phosphorus in the leds



Test 1x1 placing on reel



Machine "revolver" applying leds to the PCB

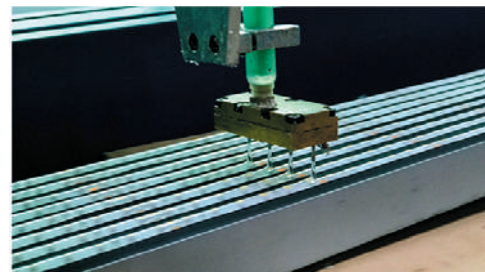


Drying oven for sealing soldered parts

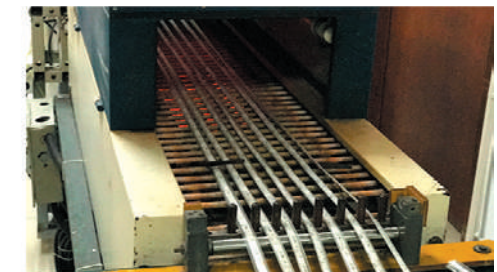
Afterwards another machine carries out a test on the leds (one-by-one) in order to classify them via their BIN code and it packages them onto a reel to be later used in the SMT machines. Then the machine applies the leds and other components such as power resistors and current stabilisers to the PCB. Once we have the PCB completed with all the elements, it is placed into an oven to make sure that all the soldered parts between the components and the PCB are completely fixed.



Quality control and luminosity



Placing of silicone



DUO waterproofing shrink tunnels

Next we come to the quality process, where the strips are checked (in lengths of 50cm) with different power intensities and with white filters, in order to detect any anomalies. Then the 50cm lengths are soldered together to make final lengths of 5m (supplied in rolls). The waterproof models are placed onto special 5m racks and here they are treated with a layer of silicone to achieve IP65. As for the models with our Waterproof DUO system (silicone and shrink wrap tube which offer us IP67), they will have a shrink wrap casing applied and then finished in the shrink tunnels. This system gives us IP67 protection without increasing the width of the led strip and at the same time maintains its flexibility in 100%.

Afterwards 3M tape is placed on the back of the strips and they are placed in the AGE TESTING chamber where the final quality testing is carried out. At the end of this process machines roll the strips onto 5m reels and then they are packaged.

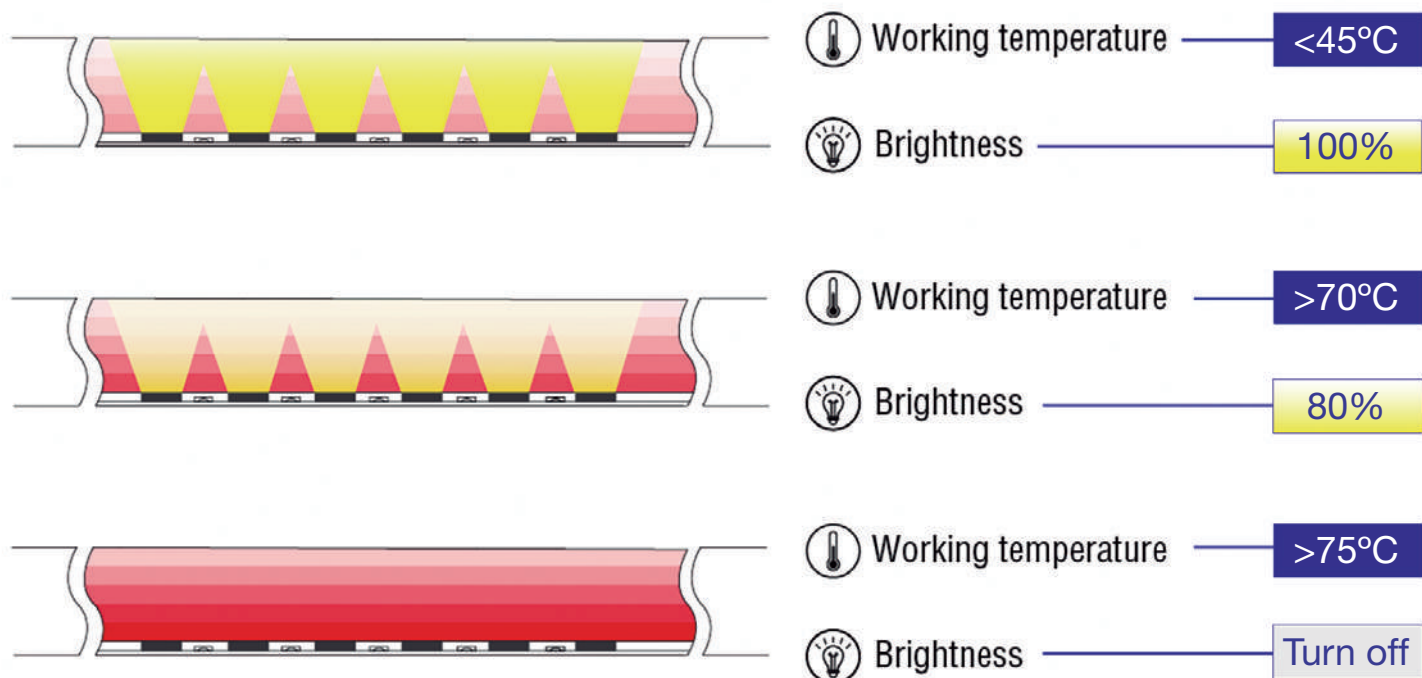
Flexible led strips with HEAT CONTROL by Luz Negra

Leds are very sensitive to temperature and if we overload, or don't apply suitable dissipation or if the outside environment is warmer than desired, then the led acquires a temperature higher than appropriate. This means it will enter into a loop where it heats up more and more until it ends up burning out and reducing its luminosity to zero.

To avoid these situations, here at Luz Negra we have incorporated our HEAT CONTROL system in some of our flexible strips (PRO series). The heat control works as follows: if the strip is working at its normal temperature (normally below 45°C), the luminous flux and its performance is 100%, but, if for any reason the strip gets hotter, the intelligent Heat Control system reduces the luminous flux to preserve the led. If the temperature is too high, the led will turn off to avoid burning out.

The flexible strips which incorporate the Heat Control system are the following:

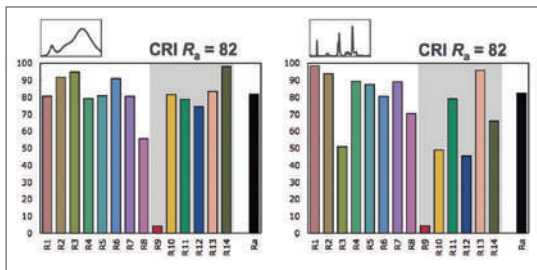
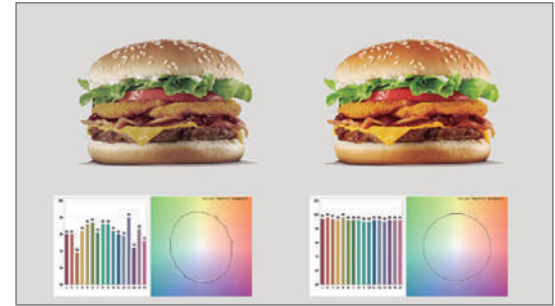
- Vizcaya
- Elite 5
- Elite 10
- Elite 15
- Elite 20
- Palma
- Tenerife
- Hierro
- Lanzarote
- Gomera



TM30-18 or CRI ¿Which is more important?

The Colour Rendering Index (CRI) is a numerical value from 0 - 100, which indicates the quality of light with respect to the sun. A light source with a CRI of 100, supposedly offers a chromatic reproduction similar to that of the sun which means that any product exposed to that light will be seen with its natural colours, as if it were illuminated by sunlight.

In the photo we can observe that the hamburger with a high CRI reflects the real colours more accurately, the value of R9 (red) being the most important of all.

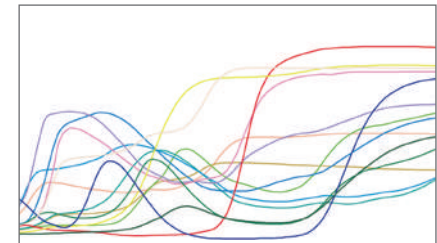


The CRI with its 15 values (colours) isn't complete enough to be able to carry out the best quality testing. This is due to the fact that with only 15 values we could reach a false assumption. The CRI can't prevent us from designing a light source with the specific idea of having a high result with these 15 colours, while the existing colour spectrum is poor in general (see the photo where we have 2 values with identical CRI and yet both luminous spectrums are very different).

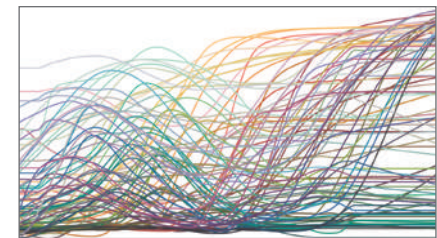
Therefore the TM-30-18 is a new standard which can tackle this problem. It has been proposed by leading organizations in USA, the IES (Illuminating Engineering Society) and the DOE (Department of Energy in USA). The TM-30-18 offers the Colour Fidelity Index (Rf) with the same quality scale up to 100, but with much higher levels of precision due to its increase in test colours (from 15 to 99 colours).

As the test colours have been substantially increased, it's practically impossible to have false readings. Only those light sources which have similarities with daylight or with the standard illuminant in the full spectrum, will obtain values greater than 90 or 95.

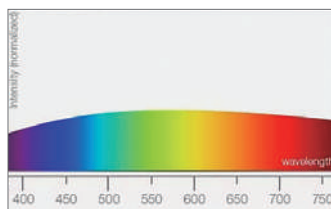
Our ecoled Full Colour strips, Sevilla model (see page 66), offer a luminous spectrum which is almost identical to sunlight, therefore achieving an excellent chromatic reproduction. Our laboratory (in our Barcelona installations) offers the most technologically advanced systems and with our spectroradiometer, equipped with an integrated sphere, we can carry out corresponding measurements for TM30-18 in order to guarantee the most rigorous and exact readings for our clients.



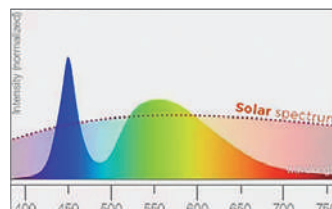
Spectrum, considering 15 values



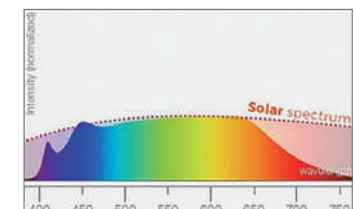
Spectrum, considering 99 values



Luminous spectrum with sunlight



Luminous spectrum with sunlight



Luminous spectrum with Sevilla ecoled

SPECIAL SERIES



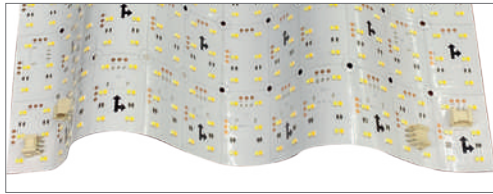
PCB SLIM



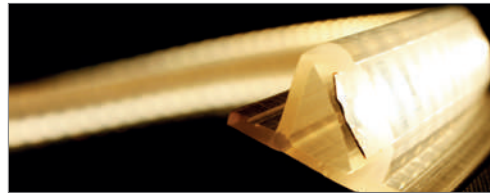
SIDE LIGHTING



ZIG-ZAG



FLEXIBLE PANEL



GHOST PROFILE



COB

Please note: all our flexible led strips are supplied in their original lengths (5m/10m/100m) or can be customised according to requested needs (with a small additional fee).

5V

Page	ecoled	Series	Colour (°Kelvin)	Power	Lumens (Lm/m)	IP	Leds/m	PCB width	Cutttable	Connector
291	FIJI	DIGITAL	RGB	11.5W/m	308 Lm	IP20	60	5mm	16.54mm	-

12V

Page	ecoled	Series	Colour (°Kelvin)	Power	Lumens (Lm/m)	IP	Leds/m	PCB width	Cutttable	Connector
273	JADE	BASIC	6500 3500	4.8W/m	500 Lm / 6500K	IP20	60	8mm	50mm	42.069
273	RUBI	BASIC	6000 2800	4.8W/m	400 Lm / 6000K	IP65	60	10mm	50mm	42.068
273	IBIZA	PRO	6300 4000 2800	4.8W/m	480 Lm / 6300K	IP67 DUO	60	10mm	50mm	42.004
275	TOPACIO	BASIC	6000 2800	11.5W/m	864 Lm / 6000K	IP20	144	10mm	20mm	42.068
277	BARCELONA	PRO	6500 4000 3000	19.2W/m	1600 Lm / 6500K	IP20	240	10mm	12.5mm	42.068
279	CIES	PRO SLIM	6000 4000 3000	10W/m	1200 Lm / 6000K	IP20	198	5mm	15 mm	42.069
281	MENORCA	PRO SIDE LIGHTING	5000 4000 2800	7.7W/m	600 Lm / 5500K	IP67 DUO	96	10mm	31mm	-
281	GETAFE	PRO SIDE LIGHTING	6000 4000 2800	10W/m	953 Lm / 6500K	IP20	120	6mm	25mm	42.069
283	AVILA	PRO "ZIG-ZAG"	6000 4400 3000	12W/m	1100 Lm / 6000K	IP54	60	6mm	50mm	42.069
285	ESMERALDA RGB	BASIC "RGB"	RGB	7.2W/m	250 Lm / white	IP65	30	10mm	100mm	-
285	AGATA RGB	BASIC "RGB"	RGB	14.4W/m	350 Lm / white	IP65	60	10mm	50mm	-
281	IRUN RGB	PRO SIDE LIGHTING	RGB	13W/m	400 Lm / white	IP20	180	6mm	50 mm	-
283	JEREZ RGB	PRO "ZIG-ZAG"	RGB	11.5W/m	400 Lm / white	IP20	48	8.5mm	60mm	-
279	ALICANTE RGB	PRO SLIM	RGB	14.4W/m	400 Lm / white	IP20	60	6mm	50 mm	-
268	PINK 10	PINK "neon effect"	PINK	10W/m	200 Lm	IP20	120	5mm	25mm	42.069
292	COZUMEL RGB	DIGITAL	RGB	7.2W/m	112 Lm	IP20	30	10mm	33.2mm	-
291	HAWAI RGB	DIGITAL	RGB	14.4W/m	438 Lm	IP20	60	10mm	16.8mm	-
292	BALI	DIGITAL	3000	14.4W/m	1000 Lm / 7000K	IP20	60	10mm	50mm	-
292	MALDIVAS RGB+W	DIGITAL	RGB + W	20W/m	500 Lm	IP20	60	10mm	16.8mm	-

Please note: all our flexible led strips are supplied in their original lengths (5m/10m/100m) or can be customised according to requested needs (with a small additional fee).

24V

Page	ecoled	Series	Colour (°Kelvin)	Power	Lumens (Lm/m)	IP	Leds/m	PCB width	Cutttable	Connector
267	ELITE 5	ELITE SAMSUNG	6500 4000 3000	5W/m	700 Lm / 6500K	IP20	140	10mm	50mm	42.068
270	PALMA	PREMIUM RETAIL	4200 3200 2850	4.8W/m	480 Lm / 4200K	IP20	56	10mm	125mm	42.068
270	TENERIFE	PREMIUM RETAIL	4200 3200 2850	9.6W/m	960 Lm / 4200K	IP20	112	10mm	62.5mm	42.068
267	ELITE 10	ELITE SAMSUNG	6500 4000 3000	10W/m	1250 Lm / 6500K	IP20	140	10mm	50mm	42.068
275	VIZCAYA	PRO	6500 4000 3000 2800	10W/m	1100 Lm / 6500K	IP67 DUO	144	10mm	42mm	42.004
275	ZAFIRO	BASIC	7800 4000 2800	15W/m	1300 Lm / 7800K	IP65	60	10mm	100mm	42.004
263	COB	COB	6500 4000 3000 2500	15W/m	1530 Lm / 6500K	IP20	480	10mm	50mm	42.068
267	ELITE 15	ELITE SAMSUNG	6500 4000 3000 2700 2400 2100	15W/m	1920 Lm / 6500K	IP20	140	10mm	50mm	42.068
271	HIERRO	PREMIUM RETAIL	4200 3200 2850	16W/m	1850 Lm / 4200K	IP20	126	10mm	55.55mm	42.068
271	LANZAROTE	PREMIUM RETAIL	4200 3200 2850	18W/m	2100 Lm / 4200K	IP20	196	10mm	35.7mm	42.068
277	CANOVELLES	PRO	6000 4000 2800	19.2W/m	1600 Lm / 6000K	IP67 DUO	240	10mm	25mm	42.004
260	SEVILLA	PRO	4000 2700	20W/m	2258 Lm / 4000K	IP20	160	10mm	50mm	42.068
267	ELITE 20	ELITE SAMSUNG	6500 4000 3000	20W/m	2060 Lm / 6500K	IP20	140	10mm	50mm	42.068
271	GOMERA	PREMIUM RETAIL	4200 3200 2850	21W/m	2450 Lm / 4200K	IP20	238	10mm	29.4mm	42.068
279	GRANADA	PRO OSRAM	6500 4000 2700	21W/m	3150 Lm / 6500K	IP20	128	5mm	62.5mm	42.069
265	CORDOBA	PRO	4000 2700	40W/m	5732 Lm / 4000K	IP20	192	10mm	41mm	-
285	GERONA ^{RGB}	PRO "RGB"	RGB	28.8W/m	800 Lm / white	IP20	120	10mm	50mm	-
287	MARBELLA ^{RGBW}	PRO "RGBW"	RGB + W 3000	18.4W/m	800 Lm / white	IP20	60	10mm	100mm	-
287	NERJA	PRO "DUAL" ^{ww-cw}	6000 3000	19.2W/m	1500 Lm / 6000K-3000K	IP20	120	8mm	50mm	-
289	TREVELEZ	FOOD "meat"	2100	20W/m	1600 Lm / 2100K	IP54	192	10mm	41.6mm	42.068
289	MOTRIL	FOOD "pastries"	2500	20W/m	1800 Lm / 2500K	IP54	192	10mm	41.6mm	42.068
289	ANTEQUERA	FOOD "vegetables"	6000	20W/m	2200 Lm / 6000K	IP54	192	10mm	41.6mm	42.068
268	PINK 20	PINK "neon effect"	PINK	20W/m	420 Lm	IP20	168	10mm	42mm	42.068
192	SEYCHELLES	DIGITAL	RGB	28.8W/m	592 Lm	IP20	20	12mm	50mm	-

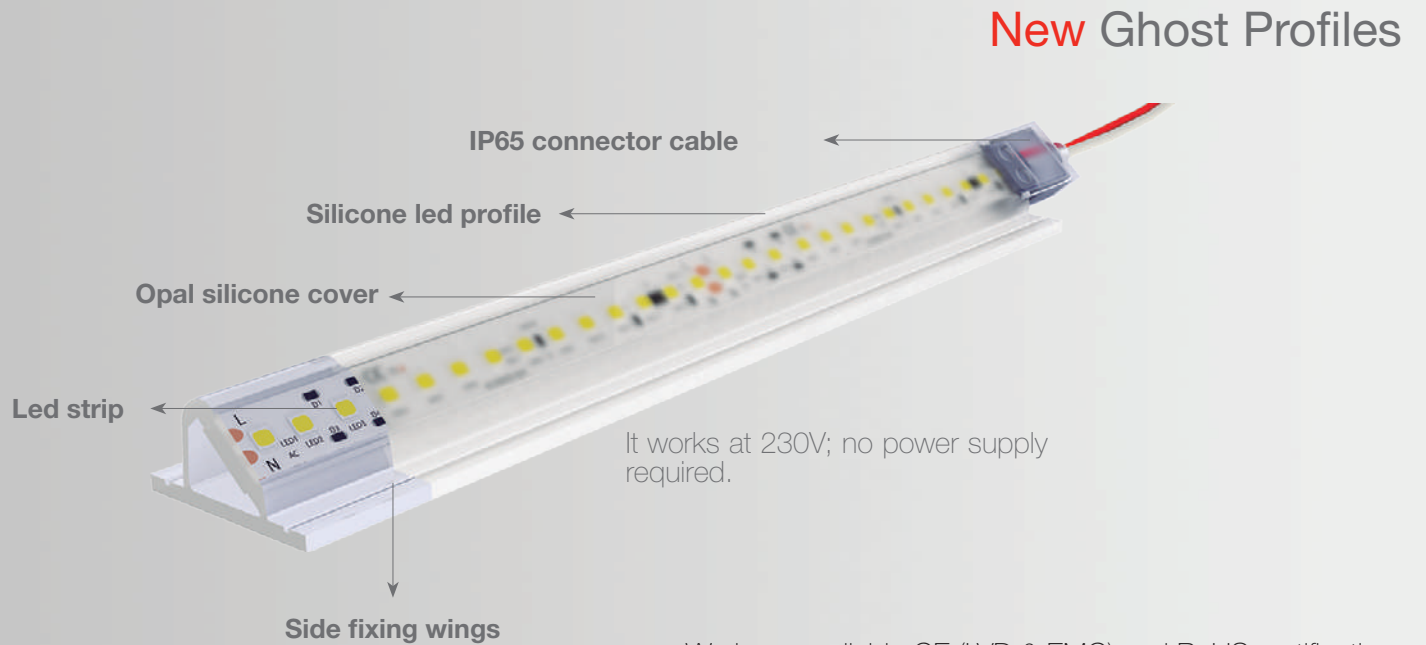
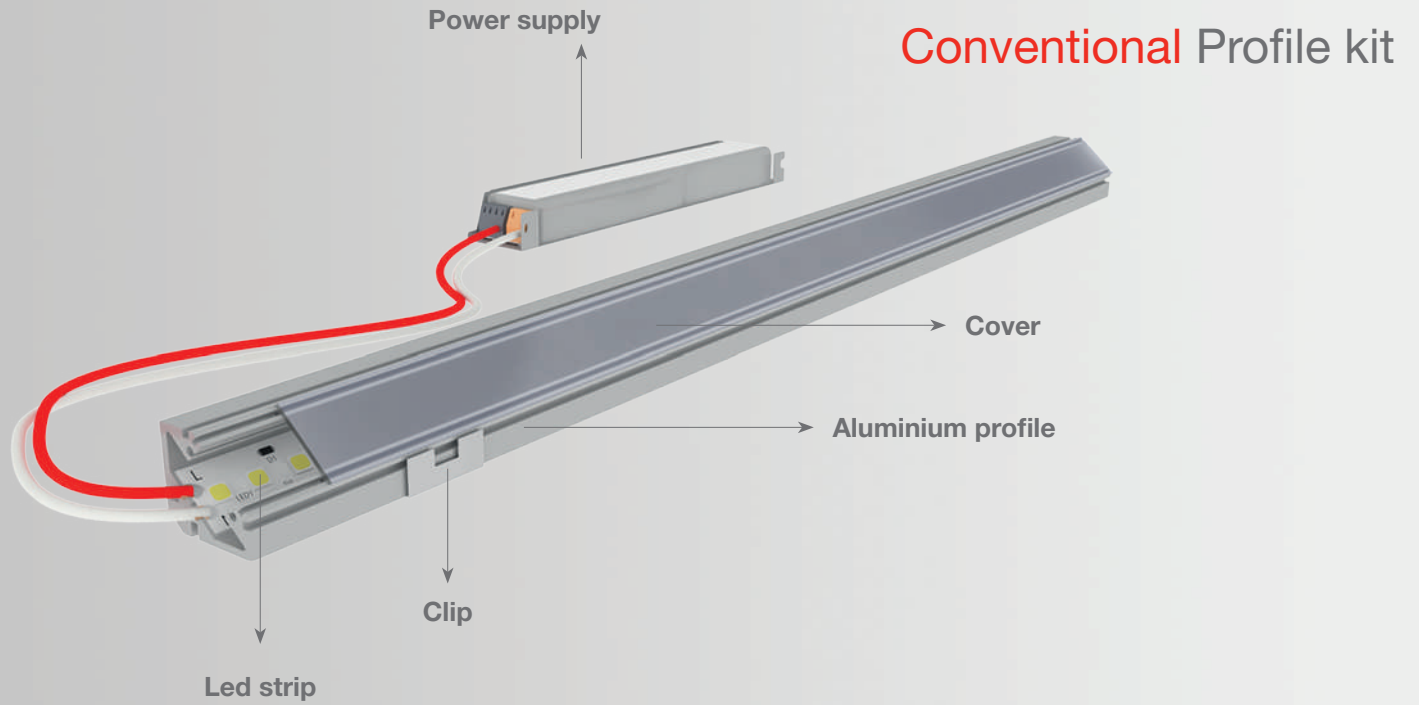
48V

Page	ecoled	Series	Colour (°Kelvin)	Power	Lumens (Lm/m)	IP	Leds/m	PCB width	Cutttable	Connector
262	CASTELLON	48V	6000 4000 2800	12.8W/m	1327 Lm / 6000K	IP20	150	10mm	100mm	42.068

230V

Page	ecoled	Series	Colour (°Kelvin)	Power	Lumens (Lm/m)	IP	Leds/m	PCB width	Cutttable	Connector
260	INFINITY	230V	6500 4500 3000 2700	14W/m	1600 Lm / 6500K	IP67	140	12	100mm	42.004
254	GHOST MILANO	230V	6000 4000 3000	14W/m	1500 Lm / 6000K	IP67	140	26	100mm	42.004
255	GHOST MILANO DOBLE	230V	4000 3000	35W/m	3750 Lm / 4000K	IP67	280	26	100mm	42.004
256	GHOST AMSTERDAM	230V	6000 4000 3000	14W/m	1500 Lm / 6000K	IP67	140	14	100mm	42.004
257	GHOST SOPHIA	230V	6000 4000 3000	14W/m	1500 Lm / 6000K	IP67	140	26	100mm	42.004

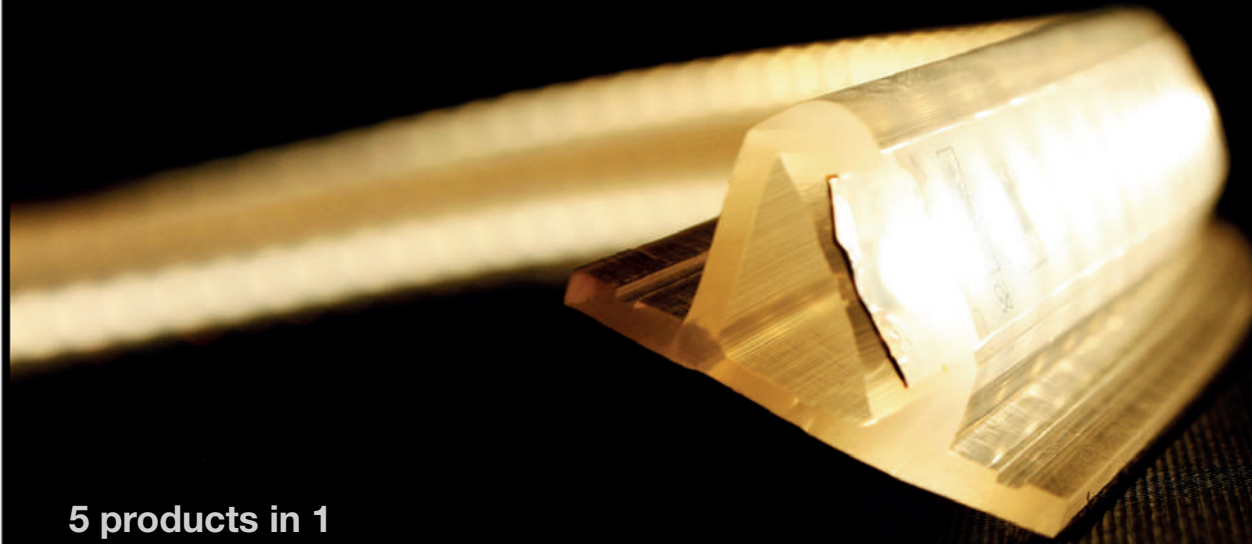
COMPARATIVE



We have available CE (LVD & EMC) and RoHS certification

Ghost Profile; our revolutionary product

Our Ghost profile is made of opal coloured silicone, which has been manufactured via a cold extrusion process and has a led strip inside which works directly at 230V. Its 140 leds/m and 0.6W of power, use only 0.1W (16% of its nominal). This means they work more relaxed at a lower power level. They do not require any aluminium profile for heat dissipation. This means we can do installation of up to 50 metre with electric feed from only one end and without any junction boxes or drop in tension. Thanks to its waterproofing of IP67 it is ideal for outdoor use. It has IP67 waterproof connectors which can be screwed in place and do not need any welding. Our Ghost Profile has a very low flicker and is dimmable by means of triac. Supplied in metre or in 100m rolls. We offer up to 3 years guarantee.

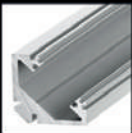


24h working

Installing in half the time.

Up to 50m without any power supply or junction boxes.

5 products in 1



PROFILE: Its silicone structure imitates the aluminium profiles. It does not require thermal dissipation from aluminium as it works only at 16% of its nominal. Its flexibility allows us to adapt to irregular shapes.



COVER: It is manufactured in opal coloured silicone which diffuses the led dots and which can't be seen once the light bounces back onto surfaces like walls and ceilings.



LED STRIP: Our Ghost profile is manufactured via a cold extrusion process and has a led strip inside. It has 140 leds/m SMD 2835 (14W/m) with 1500 lumens/m, offering almost 110 lumens/W.



POWER SUPPLY: Its electronic design (Spanish worldwide patent) permits us to work directly at 230V without needing any power supply or external rectifying box.



FIXING CLIP: Ghost profile has side wings with grooves for fixing the screws or nails onto the desired surface.

MILANO GHOST PROFILE

High quality silicone opal profile, manufactured with a 230V led strip inside. It allows us to illuminate cavities and cornises etc. and offers up to 50 metre without luminosity drops. It has 2 side grooves which means we can screw or nail the profile onto the desired surface. Aluminium is not required for heat dissipation and it can work for 24h non stop. It can be cut every 10cm, consumption 14W/m, offering 1500 Lm/W. It can be regulated with triac dimmer.

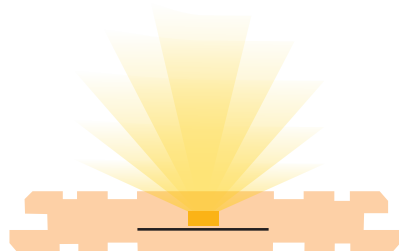
Thanks to its screwable connection kit, welding is not necessary. Its waterproofing of IP67 and UV protection turn it into an ideal product for outdoor use and also humid zones (it is extremely necessary to completely seal the connector and end cap with the recommended silicone).

Supplied in 100m rolls, or cut to requested length (MOQ 1m).

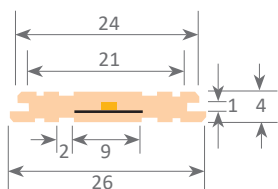
We offer a 2 year guarantee which can be extended to 3 years if the requested connections are carried out by Luz Negra. Spanish design and patent.



Scale 1:2



Scale 1:1



Power (W)	14W/m
Voltage (V)	230V
Light emission	120°
Waterproofing	IP67
N° leds/m	140
Cutable	every 100mm
Working temperature	-20°C / +40°C
Apt for	indoor / outdoor
Packaging	by metre
Guarantee	3 years



Ghost profile Milano

34.005	white	6000°K	14W/m	1500 Lm
34.006	white	4000°K	14W/m	1450 Lm
34.007	white	3000°K	14W/m	1400 Lm



Connector IP65

42.005	connector with cable of 100cm
42.004	kit (connector with cable of 10cm, closing endcap, cap with connector neck, screws and silicone)



Connector IP20

42.007	connector (without cable), suitable for screwing with cables
--------	--



Cap with connector neck

19.251	transparent silicone	set of 10 units
--------	----------------------	-----------------



Closure endcaps

19.181	transparent silicone
--------	----------------------



Silicone

22.033	High quality dielectric silicone	100ml
--------	----------------------------------	-------



High quality silicone opal profile, manufactured with a 230V led strip inside. It allows us to illuminate cavities and cornises etc. and offers up to 25 metre without luminosity drops. It has 2 side grooves which means we can screw or nail the profile on to the desired surface. Aluminium is not required for heat dissipation and it can work for 24h non stop. It can be cut every 10cm, consumption 35W/m, offering 3900 Lm/W. It can be regulated with triac dimmer.

Thanks to its screwable connection kit, welding is not necessary. Its waterproofing of IP67 an UV protection turns it into a ideal product for outdoor use and also humid zones (it is extremely necessary to completely seal the connector and end cap with the recommended silicone).

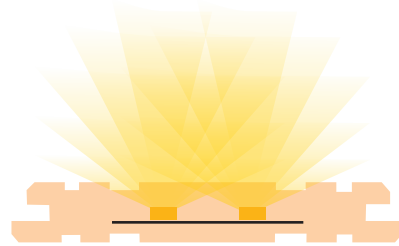
Supplied in 100m rolls, or cut to requested length (MOQ 1m).

We offer a 2 year guarantee which can be extended to 3 years if the requested connections are carried out by Luz Negra. Spanish design and patent.

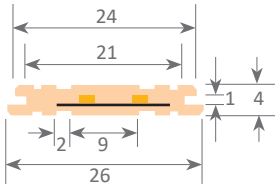
MILANO GHOST PROFILE DOUBLE



Scale 1:2



Scale 1:1



Power (W)	35W/m
Voltage (V)	230V
Light emission	120°
Waterproofing	IP67
N° leds/m	280
Cutable	every 100mm
Working temperature	-20°C / +40°C
Apt for	indoor / outdoor
Packaging	by metre
Guarantee	3 years



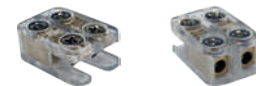
Ghost profile Milano doble

34.009 white 4000°K 35W/m 3750 Lm
34.010 white 3000°K 35W/m 3650 Lm



Connector IP65

42.005 connector with cable of 100cm
42.004 kit (connector with cable of 10cm, closing endcap, cap with connector neck, screws and silicone)



Connector IP20

42.007 connector (without cable), suitable for screwing with cables



Cap with connector neck

19.251 transparent silicone set of 10 units



Closure endcaps

19.181 transparent silicone



Silicone

22.033 High quality dielectric silicone 100ml



AMSTERDAM GHOST PROFILE

High quality silicone opal profile, manufactured with a 230V led strip inside. It allows us to illuminate cavities and cornises etc. and offers up to 50 metre without luminosity drops. It has 2 side grooves which means we can screw or nail the profile onto the desired surface. Aluminium is not required for heat dissipation and it can work for 24h non stop. It can be cut every 10cm, consumption 14W/m, offering 1500 Lm/W. It can be regulated with triac dimmer.

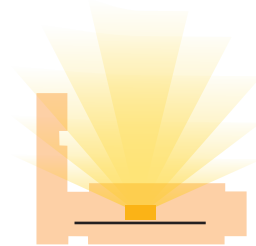
Thanks to its screwable connection kit, welding is not necessary. Its waterproofing of IP67 and UV protection turn it into an ideal product for outdoor use and also humid zones (it is extremely necessary to completely seal the connector and end cap with the recommended silicone).

Supplied in 100m rolls, or cut to requested length (MOQ 1m).

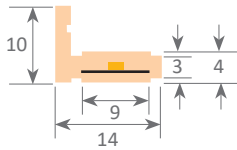
We offer a 2 year guarantee which can be extended to 3 years if the requested connections are carried out by Luz Negra. Spanish design and patent.



Scale 1:2



Scale 1:1



Power (W)	14W/m
Voltage (V)	230V
Light emission	120°
Waterproofing	IP67
N° leds/m	140
Cutable	every 100mm
Working temperature	-20°C / +40°C
Apt for	indoor / outdoor
Packaging	by metre
Guarantee	3 years



Ghost profile Amsterdam

34.011	white	6000°K	14W/m	1500 Lm
34.012	white	4000°K	14W/m	1450 Lm
34.013	white	3000°K	14W/m	1400 Lm



Connector IP65

42.005	connector with cable of 100cm
42.004	kit (connector with cable of 10cm, closing endcap, cap with connector neck, screws and silicone)



Connector IP20

42.007	connector (without cable), suitable for screwing with cables
--------	--



Cap with connector neck

19.251	transparent silicone	set of 10 units
--------	----------------------	-----------------



Closure endcaps

19.181	transparent silicone
--------	----------------------



Silicone

22.033	high quality dielectric silicone	100ml
--------	----------------------------------	-------



High quality silicone opal profile, manufactured with a 230V led strip inside. It allows us to illuminate cavities and cornises etc. and offers up to 50 metre without luminosity drops. It has 2 side grooves which means we can screw or nail the profile onto the desired surface. Aluminium is not required for heat dissipation and it can work for 24h non stop. It can be cut every 10cm, consumption 14W/m, offering 1500 Lm/W. It can be regulated with triac dimmer.

Thanks to its screwable connection kit, welding is not necessary. Its waterproofing of IP67 and UV protection turn it into an ideal product for outdoor use and also humid zones (it is extremely necessary to completely seal the connector and end cap with the recommended silicone).

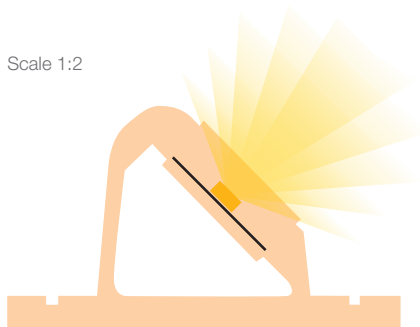
Supplied in 100m rolls, or cut to requested length (MOQ 1m).

We offer a 2 year guarantee which can be extended to 3 years if the requested connections are carried out by Luz Negra. Spanish design and patent.

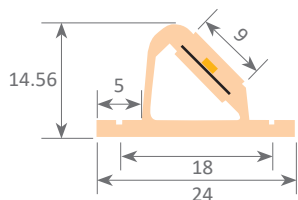
SOPHIA GHOST PROFILE



Scale 1:2



Scale 1:1



Power (W)	14W/m
Voltage (V)	230V
Light emission	120°
Waterproofing	IP67
N° leds/m	140
Cutable	every 100mm
Working temperature	-20°C / +40°C
Apt for	indoor / outdoor
Packaging	by metre
Guarantee	3 years



Ghost profile Sophia

34.014	white	6000°K	14W/m	1500 Lm
34.015	white	4000°K	14W/m	1450 Lm
34.016	white	3000°K	14W/m	1400 Lm



Connector IP65

42.005	connector with cable of 100cm
42.004	kit (connector with cable of 10cm, closing endcap, cap with connector neck, screws and silicone)



Connector IP20

42.007	connector (without cable), suitable for screwing with cables
--------	--



Cap with connector neck

19.251	transparent silicone	set of 10 units
--------	----------------------	-----------------



Closure endcaps

19.181	transparent silicone
--------	----------------------



Silicone

22.033	High quality dielectric silicone	100ml
--------	----------------------------------	-------



CHANGE

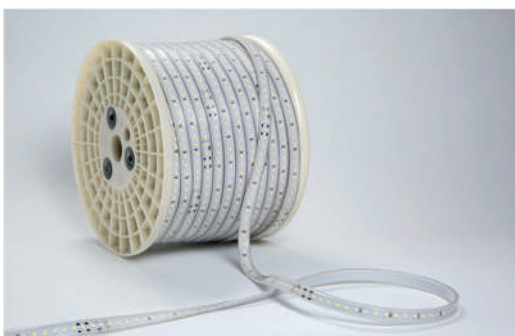
¿Do you know the advantages of using INFINITY which works directly at 230V?

1. Compared with other Asian models, Infinity uses only 17% of its leds nominal power; we use a 0.6W led that works at only 0.1W; even working 24h continuously it does not heat up and does not need any type of aluminum profile for heat dissipation.
2. We can connect up to 50m from one end, without a drop in luminosity.
3. We offer a range of connectors, joints and IP67 leads, which can be screwed on without any welding.
4. Power supplies are not needed.
5. With only a power of 14W/m, it offers 1500 lumens per metre, so we obtain more than 100W/m (something new in led strips at 230V).
6. It offers 140 leds/m SMD 2835, which guarantees an excellent dot free effect.
7. It is made of high quality silicone (UC class F1 UL94 and VOC free), which is more flexible compared to PVC led strips (Shore 85 flexibility). This material permits outdoor use without yellowing or cracking. Moreover, its weight is lower than that of PVC strips.
8. It can be introduced in almost all standard led profiles due to its reduced size.
9. We include the bridge rectifier in the PCB and not in an external box, so the cable output is clean without other components.
10. Its chips have the unique double welding process in its wire, so they are much more resistant.
11. The silicone inside this strip offers a real IP67 waterproofing, tested in salt mist chambers, so it can be installed even in places near the sea.
12. Allows us to control luminosity by using triac dimmers.
13. It has a low flicker, almost impossible to be seen.
14. It offers a Spanish patent and design.

We have available CE (LVD & EMC) and RoHS certification



INFINITY our new led strip at 230V



Available in 100m rolls. Also available in single metre (same price).



Available in warm white 3000°K, neutral white 4500°K and cool white 6000°K.



Range of connectors, joints and IP67 junction boxes, which can be screwed on without welding.



INFINITY



Ref: 34.001	6500°K
Ref: 34.002	4500°K
Ref: 34.003	3000°K
Ref: 34.004	2700°K

Single-coloured flexible led strip of medium luminosity at 230V, IP67 with 140 leds/metre and cuttable every 100mm.

12mm PCB.

Daily recommended use: 24h
Maximum connection per section: 50m

Power (W)	14W/m
Voltage (V)	230V
Led type	SMD2110
Lumens ^(6500°K)	1600 Lm/m
Lumens ^(4500°K)	1450 Lm/m
Lumens ^(3000°K)	1350 Lm/m
Lumens ^(2700°K)	1350 Lm/m
Light emission	120°
Waterproofing	IP67
N° leds/m	140
Measurements	12x4mm
Cuttable	every 100mm
PCB	12mm
Working temperature	-20°C / +40°C
Apt for	indoor / outdoor
Packaging	by metre
Guarantee	3 years waterproofed by Luz Negra
Guarantee	2 years waterproofed by client



Connector IP65

- 42.005 connector with cable of 100cm
- 42.004 kit (connector with cable of 10cm, closure endcap, cap with connector neck, screws and silicone)



Silicone

- 22.033 Silicone tube 100ml



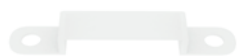
Connector IP20

- 42.007 connector (without cable), suitable for screwing with cables



Cap with connector neck

- 19.251 transparent silicone set of 10 units



Clip

- 20.041 silicone

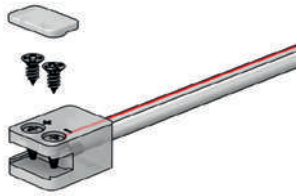


Closure endcaps

- 19.181 transparent silicone



- Photometric curves available and files IES & LDT for DIALux and RELUX carried out in our laboratory under petition.



Connectors for waterproof strips (with screw system, no need for welding)

Our new IP67 connectors make led strip connections easier, as there is no soldering involved. Only 2 screws are required like in conventional terminal blocks. We can achieve a waterproofing of IP67 by using silicone and caps.

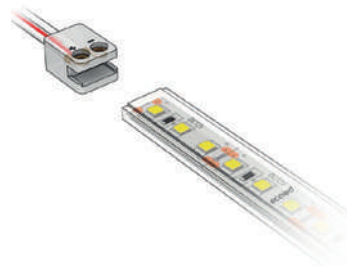


42.005 connector with cable of 100cm

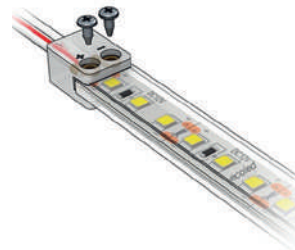
42.004 kit (connector with cable of 10cm, closure endcap, cap with connector neck, screws and silicone)



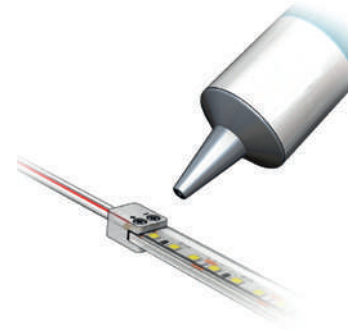
1. We cut the led strip where indicated.



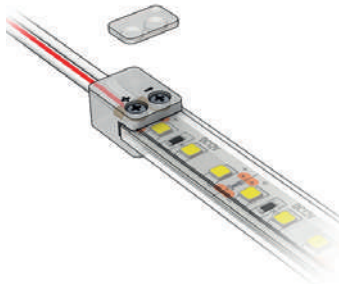
2. We place the strip inside the connector.



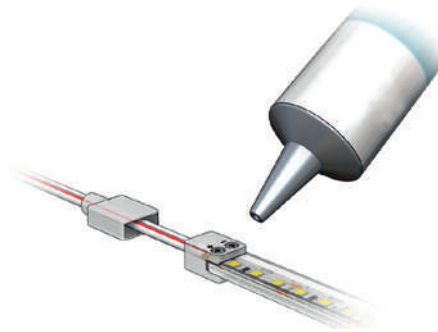
3. We tighten the screws on the connector.



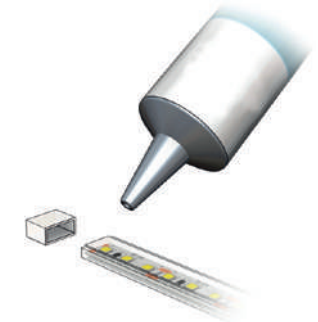
4. We apply silicone on top of the screws.



5. We put the plastic trim on top of the screws.



6. We apply silicone to cover the connector and then we attach the cap.



7. We apply silicone to the end of the strip and we fix the endcap.

Connectors compatible with our led strips:

- INFINITY
- SOPHIA GHOST PROFILE
- MILANO GHOST PROFILE
- MILANO DOBLE GHOST PROFILE
- AMSTERDAM GHOST PROFILE
- IBIZA
- ZAFIRO
- VIZCAYA
- CANOVELLES

This can be used with the majority of IP20 led strips with a 10mm PCB (single-coloured).

Connectors compatible with led Profile:

- BERNA
- OSLO
- NEW YORK
- PHILADELPHIA
- DUBLIN XL.
- TORINO WITH LP50
- KANSAS
- PARIS XL
- ROMA XL
- BERLIN XL
- SOPHIA XL
- VERSALLES
- INFERNO
- BUDAPEST

UP TO 30 METRES electric feed from only one end



UP TO 50 METRES electric feed from both ends



CASTELLON 48V



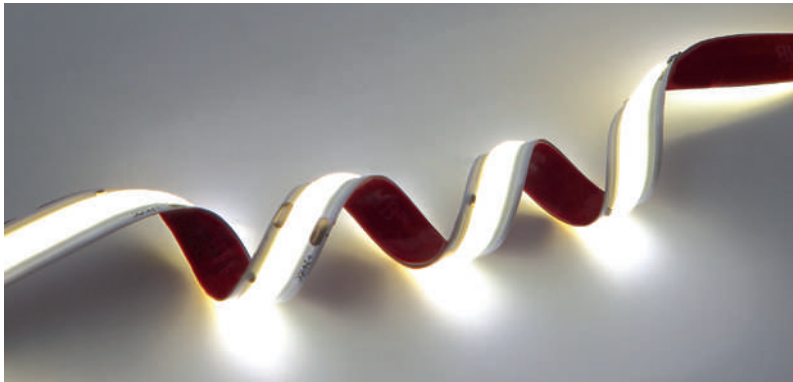
Ref: 33.036 6000°K
 Ref: 33.037 4000°K
 Ref: 33.038 2800°K

Single-coloured flexible strip "PRO"
 IP20 with 150 leds/metre 2835SMD.
 Requires use with led profile to permit dissipation.

10mm PCB

Daily recommended use: 18h
 Maximum connection in open circuit: 30m
 Maximum connection in closed circuit: 50m

Power (W)	12.8W/m
Voltage (V)	48V
Led type	SMD2835
Lumens (6000°K)	1327 Lm/m
Lumens (4000°K)	1270 Lm/m
Lumens (2800°K)	1190 Lm/m
Light emission	120°
Waterproofing	IP20
N° leds/m	150
Measurements	10000x10x1.2mm
Cutable	every 100mm
PCB	10mm
Working temperature	-20°C / +40°C
Apt for	indoor
Packaging	1 roll/10m
Guarantee	3 years



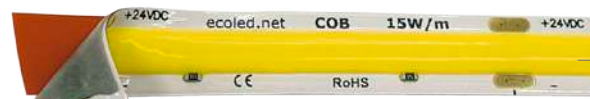
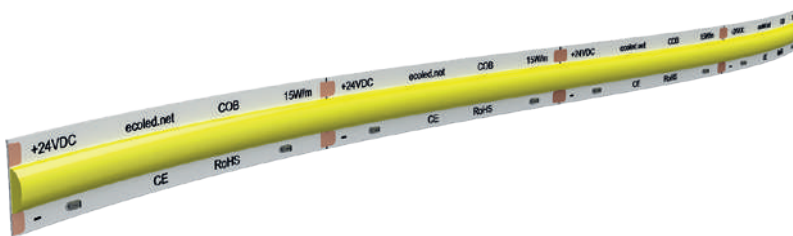
COB



Ref: 31.001	6500°K
Ref: 31.002	4000°K
Ref: 31.003	3000°K
Ref: 31.004	2500°K

Our new flexible led strips with COB technology, allow us to light up luminaires achieving a non-dotting effect. Compared with other conventional ones, our COB strips have the chip directly fixed on the PCB, without requiring a SMD frame. This way, as it is fixed directly to the base of the strip, it offers improved thermal dissipation but its structural strength is normally less. However, our COB led strips have a small iron strip incorporated at the back of the PCB which improves heat dissipation. Its strong point is that it offers 80% more in resistance compared with the rest of COB strips on the market.

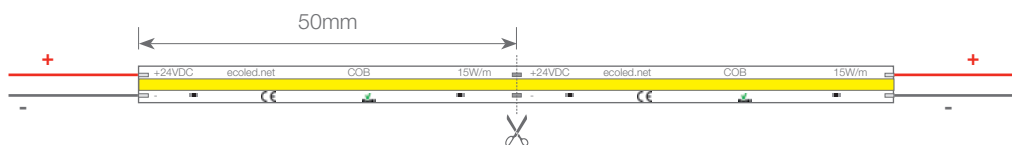
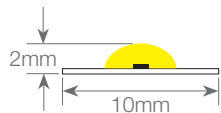
Maximum connection in open circuit: 5m
Maximum connection in closed circuit: 10m



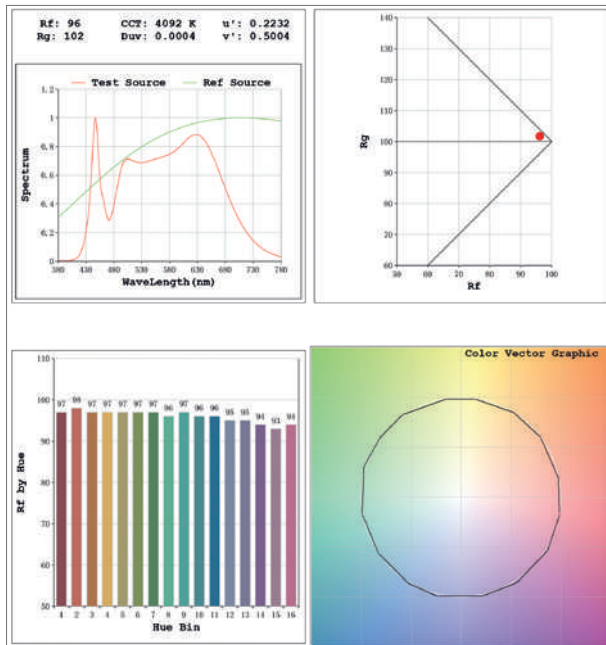
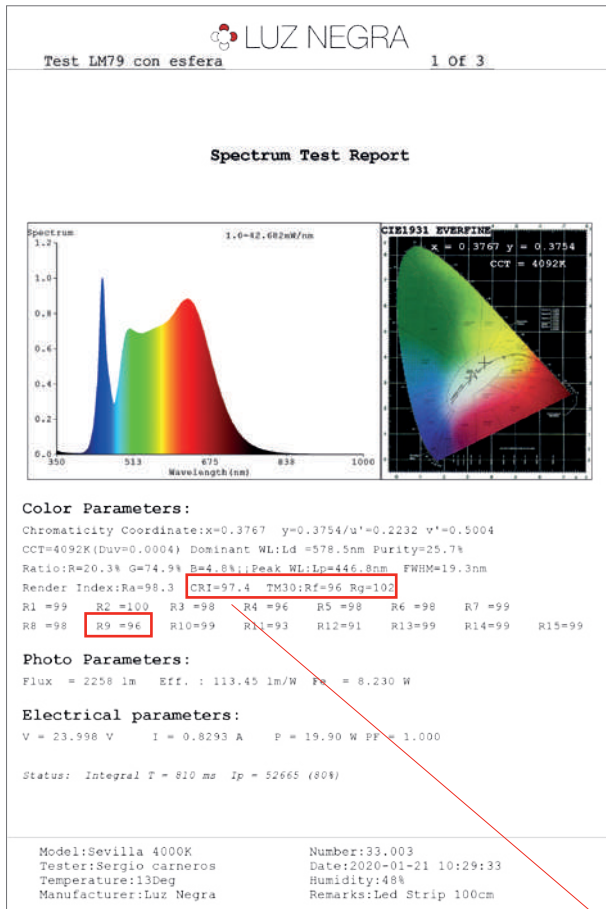
phosphorous

3M VHB adhesive thermal tape

PCB → iron strip



Power (W)	15W/m
Voltage (V)	24V
Led type	COB
Lumens (6500°K)	1530 Lm/m
Lumens (4000°K)	1500 Lm/m
Lumens (3000°K)	1400 Lm/m
Lumens (2500°K)	1330 Lm/m
Light emission	180°
Waterproofing	IP20
N° chips/m	480
Measurements	4x10x5000mm
Cuttable	every 50mm
PCB	10mm
Working temperature	-20°C / +40°C
Apt for	indoor
Packaging	1 roll/5m
Guarantee	2 years



SEVILLA FULL COLOUR



Ref: 33.003 4000°K
Ref: 33.004 2700°K

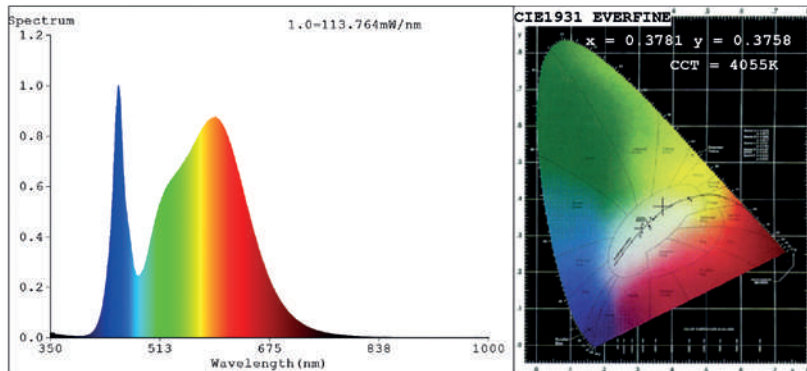
Single-coloured flexible strip "PRO"
IP20 with 160 leds/metre 2835SMD.
Requires use with led profile to permit dissipation.
10mm PCB
Daily recommended use: 18h
Maximum connection in open circuit: 5m
Maximum connection in closed circuit: 10m

Power (W)	20W/m
Voltage (V)	24V
Led type	SMD2835
Lumens ^(4000°K)	2258 Lm/m
Lumens ^(2700°K)	2017 Lm/m
Light emission	120°
Waterproofing	IP20
N° leds/m	160
Measurements	5000x10x1.2mm
Cutttable	every 50mm
PCB	10mm
Working temperature	-20°C / +40°C
Apt for	indoor
Packaging	1 roll/5m
Guarantee	3 years

FULL COLOUR LED:
very high quality chromatic reproduction

Full spectrum refers to the completeness of a light source's spectral energy, particularly when compared to natural light sources such as natural daylight. The colours of all objects are highlighted as closely as possible to their real colour as the light closely mimics that of natural daylight. The colour rendering index (CRI) tells us about the way colours appear under a light source and its highest score is at 100, meaning that natural daylight has a CRI value of 100. Thanks to the very high CRI (97-100) in our Sevilla led strip, we achieve a chromatic reproduction which is almost perfect, mimicking how we perceive the objects in sunlight.

Spectrum Test Report



Color Parameters:

Chromaticity Coordinate: x=0.3781 y=0.3758/u'=0.2240 v'=0.5008
 CCT=4055K(Duv=0.0002) Dominant WL:Ld =578.7nm Purity=26.3%
 Ratio:R=18.0% G=78.5% B=3.5%;;Peak WL:Lp=450.8nm FWHM=21.6nm
 Render Index:Ra=82.2 CRI=75.3 TM30:Rf=81 Rg=95
 R1 =80 R2 =88 R3 =94 R4 =81 R5 =80 R6 =84 R7 =86
 R8 =64 R9 =5 R10=72 R11=80 R12=61 R13=82 R14=97 R15=74

Photo Parameters:

Flux = **5732 lm** Eff. : 145.22 lm/W Fe = 17.46 W

Electrical parameters:

V = 23.998 V I = 1.645 A P = 39.47 W PF = 1.000

Status: Integral T = 250 ms Ip = 47757 (73%)

Model:Córdoba 4000K Number:33.001
 Tester:Sergio Carneros Date:2020-01-21 11:44:02
 Temperature:13Deg Humidity:48%
 Manufacturer:Luz Negra Remarks:Led Strip 100cm

CORDOBA HIGH LUMINOSITY



Ref: 33.001 4000°K
 Ref: 33.002 2700°K

Single-coloured flexible strip "PRO"
 IP20 with 192 leds/metre 3040SMD.
 Requires use with led profile to permit dissipation.
10mm PCB
 Daily recommended use:18h
 Maximum connection in open circuit: 3m
 Maximum connection in closed circuit: 6m

Power (W)	40W/m
Voltage (V)	24V
Led type	SMD3040
Lumens (4000°K)	5732 Lm/m
Lumens (2700°K)	5355 Lm/m
Light emission	120°
Waterproofing	IP20
N° leds/m	192
Measurements	3000x10x1.2mm
Cuttable	every 41mm
PCB	10mm
Working temperature	-20°C / +40°C
Apt for	indoor
Packaging	1 roll/3m
Guarantee	3 years

**HIGH LUMINOSITY LED:
 more than 5700 lumens/metre**

Our new ecoled strip, Córdoba model, with a PCB of 10mm is probably the brightness flexible strip on the market. Its high luminosity can be compared with constant current rigid strips, used for large luminaires. Due to its high power, it is of utmost importance to apply thermal conductive tape (Ref: 42.039, see page 332), and to be used with aluminum profiles with a high thermal dissipation capacity, such as our Inferno, Versailles, Berlin XL, Roma XL and similar models.

Our new ELITE series represents a “before and after” in the understanding of flexible led strips.

Up to now, depending on the power and luminosity of the strip, we would use a different quantity of leds, meaning a different cutting length and often different voltages (12V - 24V). We could also see differences in the type of led (SMD3528 - SMD2835 - SMD5050, etc...).

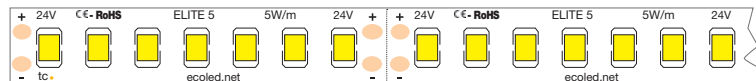
However our new ELITE series (with high quality SAMSUNG led) offers a brightness uniformity unseen so far on the market, where all the parameters remain the same even if power and luminosity vary.

We would like to highlight that the ELITE 5 model is the only led strip on the market which, apart from offering only 5W/m, gives a totally dot free effect with conventional led profiles.

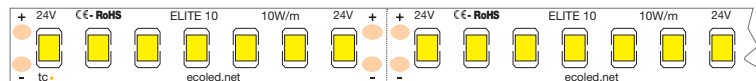
The ELITE 15 model is available also in the additional warm tones: 2100°K - 2400°K - 2700°K.

- One led: 2835 SMD **SAMSUNG**
- The same quantity of leds: 140 leds/metre
- The same cutting length: 50mm / every 7 leds
- The same voltage: 24V

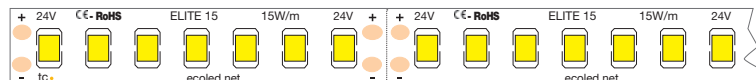
ELITE 5 5W Medium luminosity flexible strip, 24V. Can be cut every 7 leds.



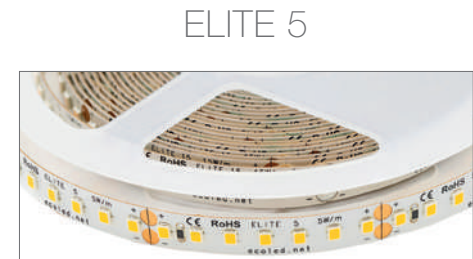
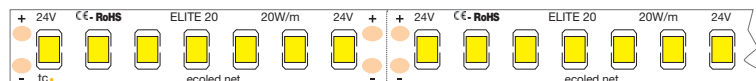
ELITE 10 10W Medium luminosity flexible strip, 24V. Can be cut every 7 leds.



ELITE 15 15W Medium luminosity flexible strip, 24V. Can be cut every 7 leds.



ELITE 20 20W Medium luminosity flexible strip, 24V. Can be cut every 7 leds.



Ref: 31.005 6500°K
 Ref: 31.006 4000°K
 Ref: 31.007 3000°K

Single-coloured flexible strip **ELITE**
 IP20 with 140 leds/metre 2835SMD.

10mm PCB.

Requires use with led profile to permit dissipation.

Heat dissipation tape included.

CRI >80.

Daily recommended use: 18h

Maximum connection in open circuit: 12m

Maximum connection in closed circuit: 20m

Power (W)	5W/m
Voltage (V)	24V
Led type	SMD2835
Lumens (6500°K)	700 Lm/m
Lumens (4000°K)	705 Lm/m
Lumens (3000°K)	680 Lm/m
Light emission	120°
Waterproofing	IP20
N° leds/m	140
Measurements	5000x10x1.2mm
Cutable	every 50mm
PCB	10mm
Working temperature	-40°C / +60°C
Apt for	indoor
Packaging	1 roll/5m
Guarantee	3 years

4
 POWERS
 MAXIMUM
 UNIFORMITY

ELITE 10



Ref: 31.008 6500°K
 Ref: 31.009 4000°K
 Ref: 31.010 3000°K

Single-coloured flexible strip **ELITE**
 IP20 with 140 leds/metre 2835SMD.

10mm PCB.

Requires use with led profile to permit dissipation.

Heat dissipation tape included.

CRI >80.

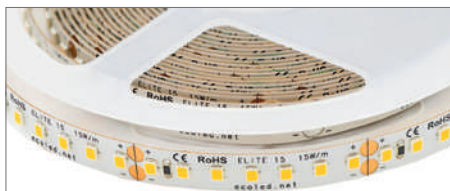
Daily recommended use: 18h

Maximum connection in open circuit: 10m

Maximum connection in closed circuit: 18m

Power (W)	10W/m
Voltage (V)	24V
Led type	SMD2835
Lumens ^(6500°K)	1250 Lm/m
Lumens ^(4000°K)	1200 Lm/m
Lumens ^(3000°K)	1150 Lm/m
Led type	120°
Waterproofing	IP20
N° leds/m	140
Measurements	5000x10x1.2mm
Cutttable	every 50mm
PCB	10mm
Working temperature	-40°C / +60°C
Apt for	indoor
Packaging	1 roll/5m
Guarantee	3 years

ELITE 15



Ref: 31.011 6500°K
 Ref: 31.012 4000°K
 Ref: 31.013 3000°K
 Ref: 31.014 2700°K
 Ref: 31.015 2400°K
 Ref: 31.016 2100°K

Single-coloured flexible strip **ELITE**
 IP20 with 140 leds/metre 2835SMD.

10mm PCB.

Requires use with led profile to permit dissipation.

Heat dissipation tape included.

CRI >80.

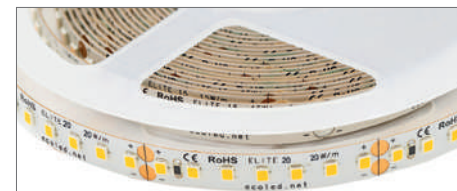
Daily recommended use: 18h.

Maximum connection in open circuit: 8m

Maximum connection in closed circuit: 15m

Power (W)	15W/m
Voltage (V)	24V
Led type	SMD2835
Lumens ^(6500°K)	1920 Lm/m
Lumens ^(4000°K)	1875 Lm/m
Lumens ^(3000°K)	1850 Lm/m
Lumens ^(2700°K)	1800 Lm/m
Lumens ^(2400°K)	1725 Lm/m
Lumens ^(2100°K)	1500 Lm/m
Led type	120°
Waterproofing	IP20
N° leds/m	140
Measurements	5000x10x1.2mm
Cutttable	every 50mm
PCB	10mm
Working temperature	-40°C / +60°C
Apt for	indoor
Packaging	1 roll/5m
Guarantee	3 years

ELITE 20



Ref: 31.017 6500°K
 Ref: 31.018 4000°K
 Ref: 31.019 3000°K

Single-coloured flexible strip **ELITE**
 IP20 with 140 leds/metre 2835SMD.

10mm PCB.

Requires use with led profile to permit dissipation.

Heat dissipation tape included.

CRI >80.

Daily recommended use: 18h

Maximum connection in open circuit: 5m

Maximum connection in closed circuit: 10m

Power (W)	20W/m
Voltage (V)	24V
Led type	SMD2835
Lumens ^(6500°K)	2060 Lm/m
Lumens ^(4000°K)	2050 Lm/m
Lumens ^(3000°K)	2010 Lm/m
Led type	120°
Waterproofing	IP20
N° leds/m	140
Measurements	5000x10x1.2mm
Cutttable	every 50mm
PCB	10mm
Working temperature	-40°C / +60°C
Apt for	indoor
Packaging	1 roll/5m
Guarantee	3 years

PINK 10



Ref: 30.001

PINK (PINK 10)

Single-coloured flexible led strip with “**PINK EFFECT**”, very useful for combining with neon type silicone profiles.

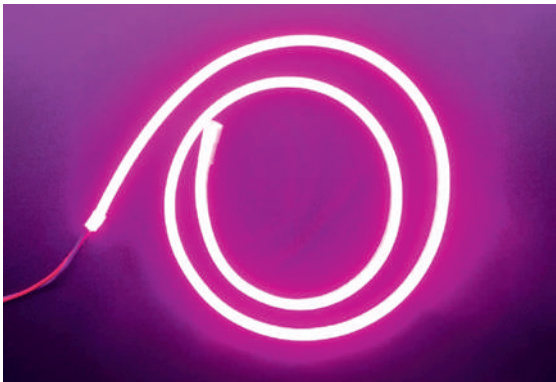
Requires use with led profile to permit dissipation.

5mm PCB

Daily recommended use: 18h

Maximum connection in open circuit: 3m

Maximum connection in closed circuit: 6m



Power (W)	10W/m
Voltage (V)	12V
Lumens	200 Lm/m
Light emission	120°
Waterproofing	IP20
N° leds/m	120
Measurements	5000x5x1.2mm
Cutable	every 25mm
Guarantee	3 years

PINK 20



Ref: 31.020

PINK (PINK 20)

Single-coloured flexible led strip with “**PINK EFFECT**”, very useful for combining with neon type silicone profiles.

Requires use with led profile to permit dissipation.

10mm PCB

Daily recommended use: 18h

Maximum connection in open circuit: 3m

Maximum connection in closed circuit: 6m

Power (W)	20W/m
Voltage (V)	24V
Lumens	420 Lm/m
Light emission	120°
Waterproofing	IP20
N° leds/m	168
Measurements	5000x10x1.2mm
Cutable	every 42mm
Guarantee	3 years

¿What is the PREMIUM RETAIL series?

This is a led strip series, which is specifically oriented towards retail channels and commerce. Their CRI ratings are high (90-95), they are equipped with voltage stabilizers (which allow us to make longer installations without running the risk of voltage drops), their performance rating is of 100 lumens/W (higher than regular led strips) and they offer a **4 year guarantee**.

¿Why should I choose the PREMIUM RETAIL series?

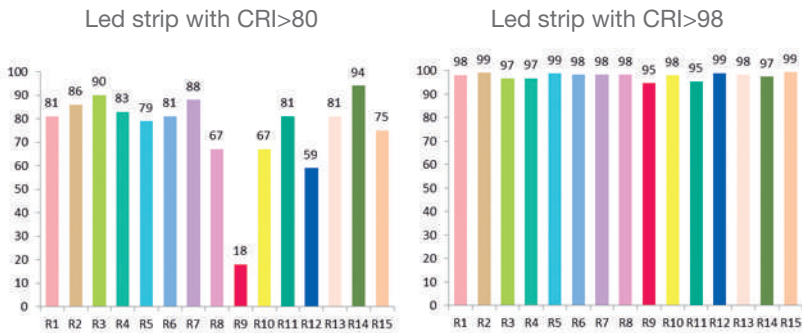
Most of the led strips currently available on the market have CRI (Colour Rendering Index) ratings ranged between 60 and 80. Our Premium Retail series offers CRI values placed between 90 and 95.

¿What is the purpose of having a high CRI rating?

The light emission of led Strips with high CRI ratings does not distort the colours of images as the human eye sees them. Therefore, by using them, we are able to see the true colours of fabrics, fibres, textile products and other materials.

¿Why don't all led strips have a high CRI?

First of all, high rated CRI performances can be useful only when warm or neutral colours are being used. Furthermore, in such cases we use a different and more expensive type of phosphorous, which also affects the led strip by reducing its lighting performance in 20% compared with regular led strips. Therefore, unless the product is oriented towards retail channels or similar targets, the product is not advisable.



If we compare luminosity with both high and low CRI, those colours with a low CRI rating appear less real and more faded.



CRI >90

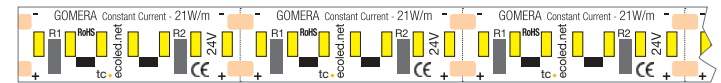


CRI 60

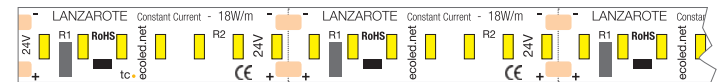
PREMIUM RETAIL Led strips



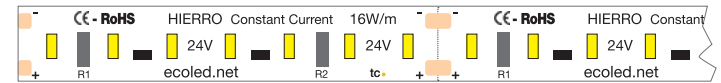
Colour values in high rated CRI led strips are also greater than those offered by regular strips. Amongst these colour values, "R9" significantly affects the overall results and it is considered the most important value. By using our spectroradiometer, which is also equipped with an integrated sphere, we can carry out readings for the different "R" values in order to ensure a high CRI rating.



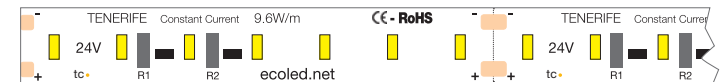
ecoled GOMERA. High luminosity flexible strip, current stabiliser, 24V, IP20, 10mm PCB. Can be cut every 7 leds.



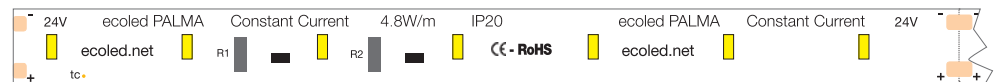
ecoled LANZAROTE. High luminosity flexible strip, current stabiliser, 24V, IP20, 10mm PCB. Can be cut every 7 leds.



ecoled HIERRO. Medium luminosity flexible strip, current stabiliser, 24V, IP20, 10mm PCB. Can be cut every 7 leds.



ecoled TENERIFE. Low luminosity flexible strip, current stabiliser, 24V, IP20, 10mm PCB. Can be cut every 7 leds.



ecoled PALMA. Low luminosity flexible strip, current stabiliser, 24V, IP20, 10mm PCB. Can be cut every 7 leds.

PALMA



Ref: 33.005 4200°K
 Ref: 33.006 3200°K
 Ref: 33.007 2850°K

Single-coloured **PREMIUM RETAIL** flexible strip IP20, with 56 leds/metre 3014SMD.

10mm PCB.

Requires use with led profile to permit dissipation.

Heat dissipation tape included.

Current stabiliser.

CRI >90.

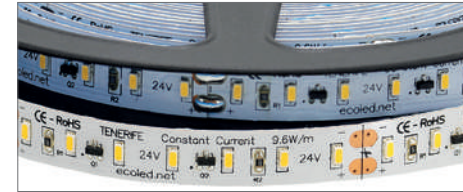
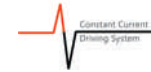
Daily recommended use: 18h

Maximum connection in open circuit: 10m

Maximum connection in closed circuit: 20m

Power (W)	4.8W/m
Voltage (V)	24V
Led type	SMD3014
Lumens (4200°K)	480 Lm/m
Lumens (3200°K)	450 Lm/m
Lumens (2850°K)	430 Lm/m
Light emission	120°
Waterproofing	IP20
N° leds/m	56
Measurements	5000x10x1.2mm
Cutttable	every 125mm
PCB	10mm
Working temperature	-40°C / +60°C
Apt for	indoor
Packaging	1 roll/5m
Guarantee	4 years

TENERIFE



Ref: 33.008 4200°K
 Ref: 33.009 3200°K
 Ref: 33.010 2850°K

Single-coloured **PREMIUM RETAIL** flexible strip IP20, with 112 leds/metre 3014SMD.

10mm PCB.

Requires use with led profile to permit dissipation.

Heat dissipation tape included.

Current stabiliser.

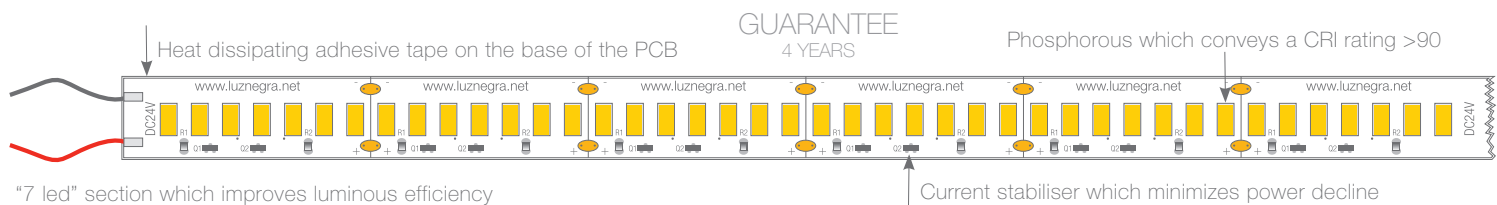
CRI >90.

Daily recommended use: 18h

Maximum connection in open circuit: 10m

Maximum connection in closed circuit: 20m

Power (W)	9.6W/m
Voltage (V)	24V
Led type	SMD3014
Lumens (4200°K)	960 Lm/m
Lumens (3200°K)	900 Lm/m
Lumens (2850°K)	864 Lm/m
Light emission	120°
Waterproofing	IP20
N° leds/m	112
Measurements	5000x10x1.2mm
Cutttable	every 62.5mm
PCB	10mm
Working temperature	-40°C / +60°C
Apt for	indoor
Packaging	1 roll/5m
Guarantee	4 years



HIERRO



Ref: 33.011 4200°K
 Ref: 33.012 3200°K
 Ref: 33.013 2850°K

Single-coloured **PREMIUM RETAIL** flexible strip IP20, with 126 leds/metre 3014SMD.

10mm PCB.

Requires use with led profile to permit dissipation.

Heat dissipation tape included.

Current stabiliser.

CRI >90.

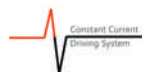
Daily recommended use: 18h

Maximum connection in open circuit: 7.5m

Maximum connection in closed circuit: 15m

Power (W)	16W/m
Voltage (V)	24V
Led type	SMD3014
Lumens (4200°K)	1850 Lm/m
Lumens (3200°K)	1700 Lm/m
Lumens (2850°K)	1500 Lm/m
Light emission	120°
Waterproofing	IP20
N° leds/m	126
Measurements	5000x10x1.2mm
Cutable	every 55.55mm
PCB	10mm
Working temperature	-40°C / +60°C
Apt for	indoor
Packaging	1 roll/5m
Guarantee	4 years

LANZAROTE



Ref: 33.014 4200°K
 Ref: 33.015 3200°K
 Ref: 33.016 2850°K

Single-coloured flexible strip **PREMIUM RETAIL** IP20 with 196 leds/metre 3014SMD.

10mm PCB.

Requires use with led profile to permit dissipation.

Heat dissipation tape included.

Current stabiliser.

CRI >90.

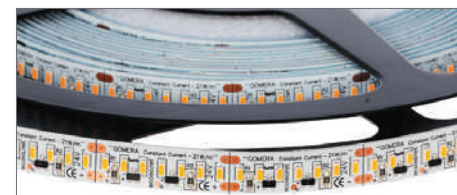
Daily recommended use: 18h

Maximum connection in open circuit: 5m

Maximum connection in closed circuit: 10m

Power (W)	18W/m
Voltage (V)	24V
Led type	SMD3014
Lumens (4200°K)	2100 Lm/m
Lumens (3200°K)	2000 Lm/m
Lumens (2850°K)	1850 Lm/m
Light emission	120°
Waterproofing	IP20
N° leds/m	196
Measurements	5000x10x1.2mm
Cutable	every 35.7mm
PCB	10mm
Working temperature	-40°C / +60°C
Apt for	indoor
Packaging	1 roll/5m
Guarantee	4 years

GOMERA



Ref: 33.017 4200°K
 Ref: 33.018 3200°K
 Ref: 33.019 2850°K

Single-coloured flexible strip **PREMIUM RETAIL** IP20 with 238 leds/metre 3014SMD.

10mm PCB.

Requires use with led profile to permit dissipation.

Heat dissipation tape included.

Current stabiliser.

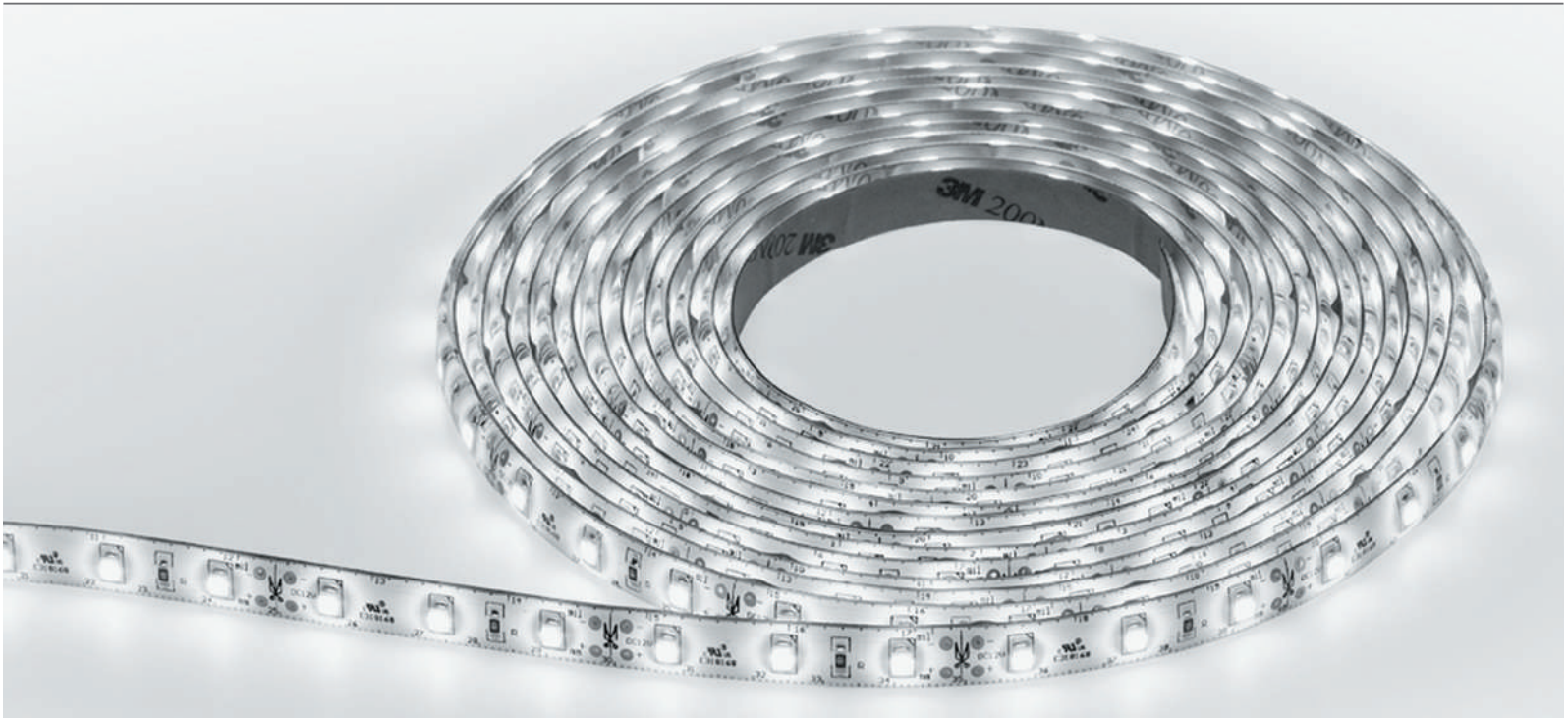
CRI >90.

Daily recommended use: 18h

Maximum connection in open circuit: 5m

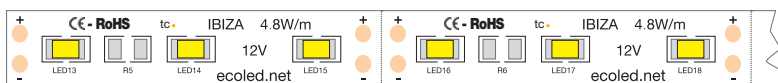
Maximum connection in closed circuit: 10m

Power (W)	21W/m
Voltage (V)	24V
Led type	SMD3014
Lumens (4200°K)	2450 Lm/W
Lumens (3200°K)	2300 Lm/W
Lumens (2850°K)	2100 Lm/W
Light emission	120°
Waterproofing	IP20
N° leds/m	238
Measurements	5000x10x1.2mm
Cutable	every 29.4mm
PCB	10mm
Working temperature	-40°C / +60°C
Apt for	indoor
Packaging	1 roll/5m
Guarantee	4 years



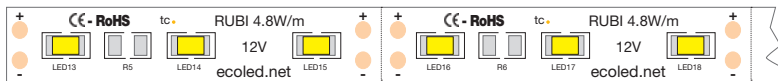
Low luminosity flexible strips which are ideal for ambience lighting or signage.

We would like to highlight the IBIZA led strip which is the star model in this series, offering maximum guarantee and reliability and has been our best seller since 2008. It is also the only strip in this section which offers our exclusive watertight system, waterproof DUO IP67.



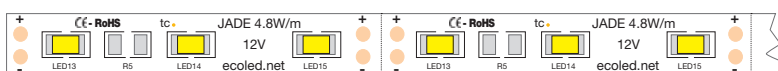
ecoled IBIZA "PRO"

Low luminosity flexible strip, 12V, IP67 waterproof DUO. 10mm PCB. Can be cut every 3 leds.



ecoled RUBI "BASIC"

Low luminosity flexible strip, 12V, IP65. 10mm PCB. Can be cut every 3 leds.

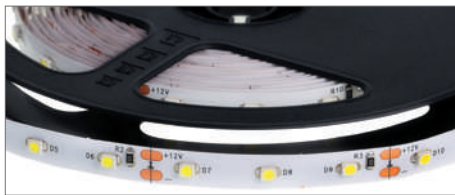


ecoled JADE "BASIC"

Low luminosity flexible strip, 12V, IP20. 8mm PCB. Can be cut every 3 leds.



JADE



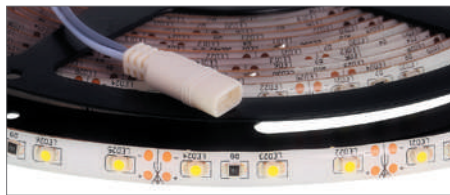
Ref: 30.002 6500°K
Ref: 30.003 3500°K

Single-coloured flexible strip **BASIC**
IP20 with 60 leds/metre 3528SMD.
8mm PCB.

Daily recommended use: 12h
Maximum connection in open circuit: 7.5m
Maximum connection in closed circuit: 15m

Power (W)	4.8W/m
Voltage (V)	12V
Led type	SMD3528
Lumens (6500°K)	500 Lm/m
Lumens (3500°K)	400 Lm/m
Light emission	120°
Waterproofing	IP20
N° leds/m	60
Measurements	5000x8x3mm
Cutttable	every 50mm
PCB	8mm
Working temperature	-20°C / +40°C
Apt for	indoor
Packaging	1 roll/5m
Guarantee	2 years

RUBI



Ref: 30.004 6000°K
Ref: 30.005 2800°K
Ref: 30.006 red
Ref: 30.007 blue
Ref: 30.008 green
Ref: 30.009 amber

Single-coloured flexible strip **BASIC**
IP65 with 60 leds/metre 3528SMD.
10mm PCB.

Daily recommended use: 12h
Maximum connection in open circuit: 7.5m
Maximum connection in closed circuit: 15m

Power (W)	4.8W/m
Voltage (V)	12V
Led type	SMD3528
Lumens (6000°K)	400 Lm/m
Lumens (2800°K)	300 Lm/m
Light emission	120°
Waterproofing	IP65
N° leds/m	60
Measurements	5000x10x4mm
Cutttable	every 50mm
PCB	10mm
Working temperature	-20°C / +40°C
Apt for	indoor / outdoor
Packaging	1 roll/5m
Guarantee	2 years

IBIZA

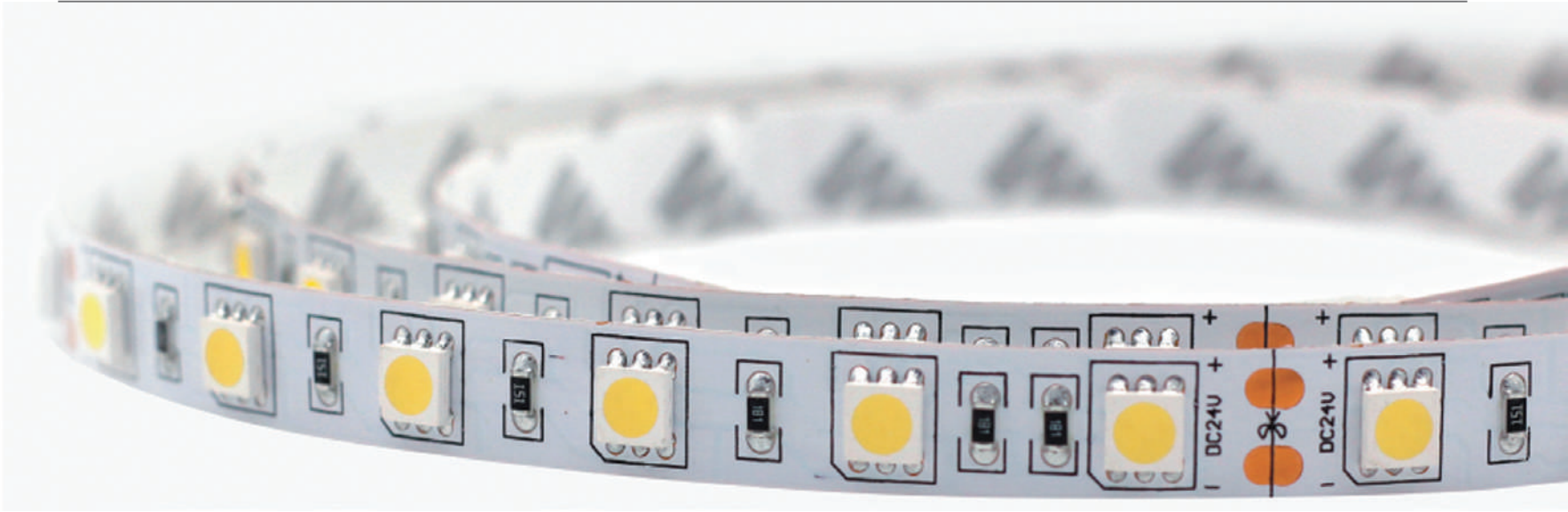


REF: 30.010 7300°K
REF: 30.011 4000°K
REF: 30.012 2800°K

Single-coloured flexible strip **Waterproof DUO**
PRO IP67 with 60 leds/metre 3528SMD.
10mm PCB.

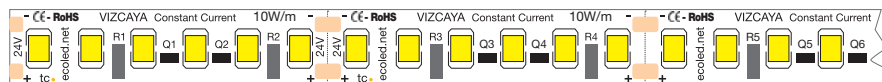
Daily recommended use: 18h
Maximum connection in open circuit: 10m
Maximum connection in closed circuit: 20m

Power (W)	4.8W/m
Voltage (V)	12V
Led type	SMD3528
Lumens (7300°K)	480 Lm/m
Lumens (4000°K)	450 Lm/m
Lumens (2800°K)	430 Lm/m
Light emission	120°
Waterproofing	IP67 "DUO"
N° leds/m	60
Measurements	5000x10x4mm
Cutttable	every 50mm
PCB	10mm
Working temperature	-20°C / +40°C
Apt for	indoor / outdoor
Packaging	1 roll/5m
Guarantee	3 years



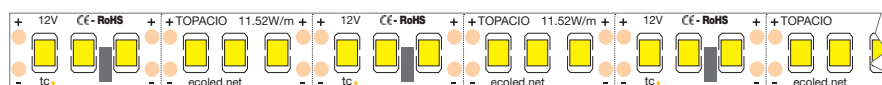
Medium luminosity flexible strips, which are ideal for ambience lighting or for using with furniture, shelving, cornices, etc. We can achieve a good dot free effect with led profiles with medium and large depths, such as our Roma and Berlin models, or similar.

We would like to highlight our VIZCAYA model which offers an excellent relation between Lumens/Watts and with just over 10W gives the same lighting as conventional strips with 14.4W/m. It also incorporates a current stabiliser which allows us to install up to 15m continuously without hardly any tension drop. It is also the only strip in this section which offers our exclusive watertight system, waterproof DUO IP67.



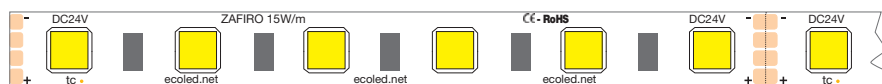
ecoled VIZCAYA "PRO"

Medium luminosity flexible strip, current stabiliser, 24V, IP67 waterproof DUO. 10mm PCB. Can be cut every 6 leds.



ecoled TOPACIO "BASIC"

Medium luminosity flexible strip, 12V, IP20. 10mm PCB. Can be cut every 3 leds.



ecoled ZAFIRO "BASIC"

Medium luminosity flexible strip, 24V, IP65. 10mm PCB. Can be cut every 6 leds.



ZAFIRO



Ref: 31.021 7800°K
 Ref: 31.022 4000°K
 Ref: 31.023 2800°K

Single-coloured flexible strip **BASIC**
 IP65 with 60 leds/metre 5050SMD.
 Requires use with led profile to permit dissipation.
10mm PCB.

Daily recommended use: 12h
 Maximum connection in open circuit: 5m
 Maximum connection in closed circuit: 10m

Power (W)	15W/m
Voltage (V)	24V
Led type	SMD5050
Lumens ^(7800°K)	1300 Lm/m
Lumens ^(4000°K)	1200 Lm/m
Lumens ^(2800°K) 1	1100 Lm/m
Light emission	120°
Waterproofing	IP65
N° leds/m	60
Measurements	5000x10x4mm
Cutttable	every 100mm
PCB	10mm
Working temperature	-20°C / +40°C
Apt for	indoor / outdoor
Packaging	1 roll/5m
Guarantee	2 years

TOPACIO



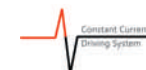
Ref: 30.013 6000°K
 Ref: 30.014 2800°K

Single-coloured flexible strip **BASIC**
 IP20 with 144 leds/metre 3528SMD.
 Requires use with led profile to permit dissipation.
10mm PCB.

Daily recommended use: 12h
 Maximum connection in open circuit: 5m
 Maximum connection in closed circuit: 10m

Power (W)	11.52W/m
Voltage (V)	12V
Led type	SMD3528
Lumens ^(6000°K)	864 Lm/m
Lumens ^(2800°K)	682 Lm/m
Light emission	120°
Waterproofing	IP20
N° leds/m	144
Measurements	5000x10x4mm
Cutttable	every 20mm
PCB	10mm
Working temperature	-20°C / +40°C
Apt for	indoor
Packaging	1 roll/5m
Guarantee	2 years

VIZCAYA



Ref: 33.020 6500°K
 Ref: 33.021 4000°K
 Ref: 33.022 3000°K
 Ref: 33.023 2800°K

Single-coloured flexible strip **PRO Waterproof**
DUO IP67 with 144 leds/metre 3528SMD.
 Requires use with led profile to permit dissipation.
10mm PCB.

Current stabiliser.
 Daily recommended use: 18h
 Maximum connection in open circuit: 10m
 Maximum connection in closed circuit: 20m

Power (W)	10W/m
Voltage (V)	24V
Led type	SMD3528
Lumens ^(6500°K)	1100 Lm/m
Lumens ^(4000°K)	980 Lm/m
Lumens ^(3000°K)	960 Lm/m
Lumens ^(2800°K)	910 Lm/m
Light emission	120°
Waterproofing	IP67 "DUO"
N° leds/m	144
Measurements	5000x10x4mm
Cutttable	every 42mm
PCB	10mm
Working temperature	-20°C / +40°C
Apt for	indoor / outdoor
Packaging	1 roll/5m
Guarantee	3 years

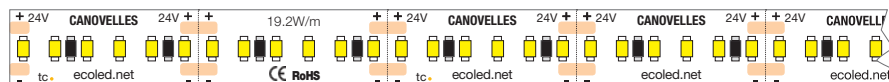


High luminosity flexible strip with a high density of leds which permits a dot free effect in the opal or frosted cover, even when we use the shallower led profiles, Milano, Frankfurt or similar.



ecoled BARCELONA "PRO"

High luminosity flexible led strip, 12V, IP20, 10mm PCB. It can be cut every 3 leds.

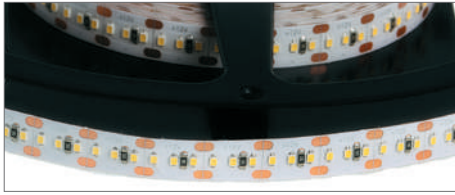


ecoled CANOVELLES "PRO"

High luminosity flexible led strip, 24V, IP67 waterproof DUO, 10mm PCB. It can be cut every 6 leds.



BARCELONA

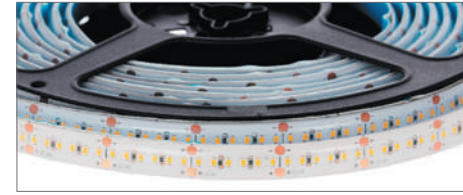


Ref: 32.001 6500°K
 Ref: 32.002 4000°K
 Ref: 32.003 3000°K

Single-coloured flexible strip **PRO**
 IP20 with 240 leds/metre 2216SMD.
 Requires use with led profile to permit dissipation.
Heat dissipation tape included.
10mm PCB.
 Daily recommended use: 18h
 Maximum connection in open circuit: 3m
 Maximum connection in closed circuit: 6m

Power (W)	19.2W/m
Voltage (V)	12V
Led type	SMD2216
Lumens ^(6500°K)	1600 Lm/m
Lumens ^(4000°K)	1400 Lm/m
Lumens ^(3000°K)	1200 Lm/m
Light emission	120°
Waterproofing	IP20
N° leds/m	240
Measurements	5000x10x1.2mm
Cutable	every 12.5mm
PCB	10mm
Working temperature	-20°C / +40°C
Apt for	indoor
Packaging	1 roll/5m
Guarantee	3 years

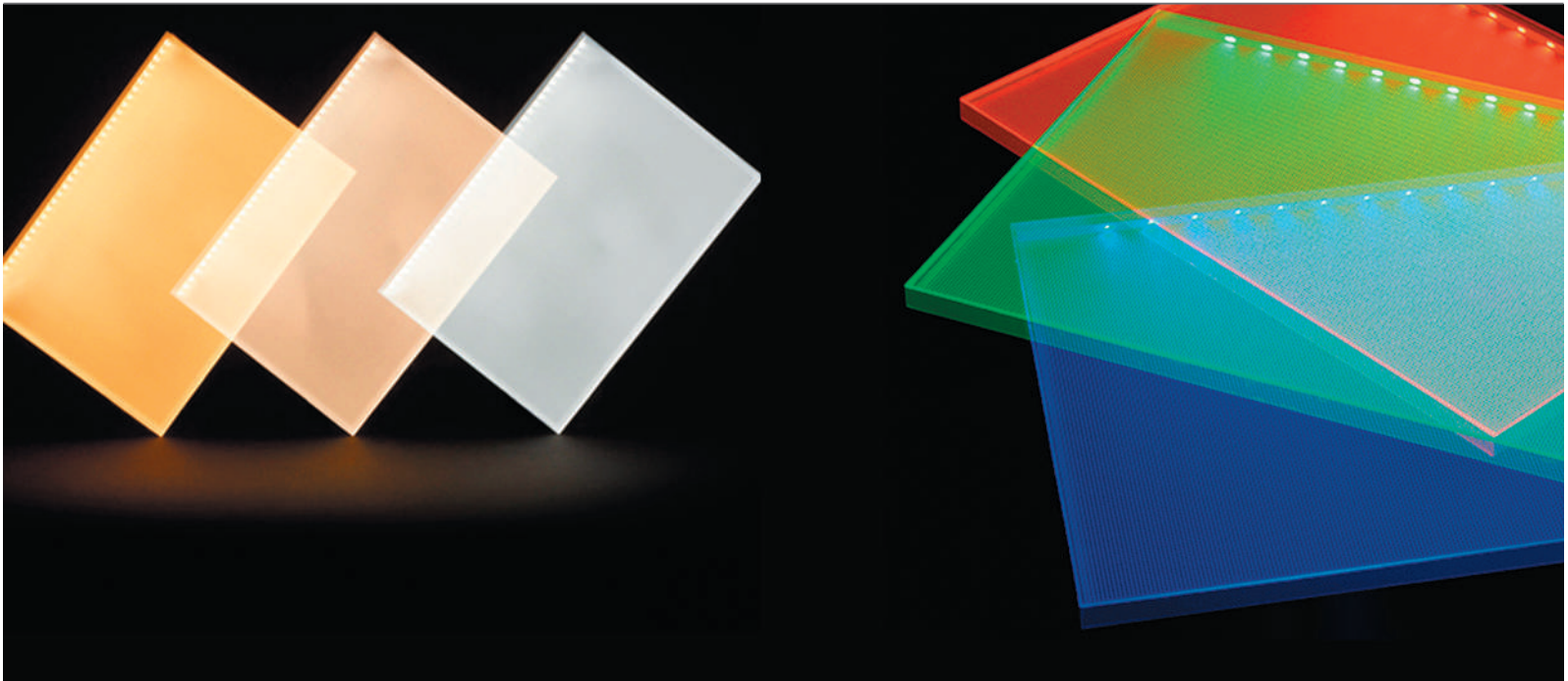
CANOVELLES



Ref: 33.024 6000°K
 Ref: 33.025 4000°K
 Ref: 33.026 2800°K

Single-coloured flexible strip **PRO Waterproof**
DUO IP67 with 240 leds/metre 2216SMD.
Heat dissipation tape included.
10mm PCB.
 Daily recommended use: 18h
 Maximum connection in open circuit: 3m
 Maximum connection in closed circuit: 6m

Power (W)	19.2W/m
Voltage (V)	24V
Led type	SMD2216
Lumens ^(6000°K)	1600 Lm/m
Lumens ^(4000°K)	1400 Lm/m
Lumens ^(3000°K)	1200 Lm/m
Light emission	120°
Waterproofing	IP67 "DUO"
N° leds/m	240
Measurements	5000x10x3mm
Cutable	every 25mm
PCB	10mm
Working temperature	-20°C / +40°C
Apt for	indoor / outdoor
Packaging	1 roll/5m
Guarantee	3 years



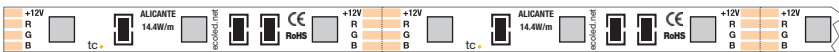
Flexible strips with widths of only 4-5-6mm. These are specially indicated for illuminating the sides of optic methacrylate sheets similar to V-Cutting and Dotting. These are used in the manufacturing of luminous signs, extra thin luminaires, ceiling panels and in general commercial lighting and furniture. They are also highly recommended for using with narrow led profiles, such as our Detroit model (see page 62).

Due to the elevated quantity of dots and high luminosity in the single-coloured led models, they are very useful in conventional profiles as the dots are well diffused in the vast majority of the shallow models.



High luminosity flexible led strip, 24V, IP20, 5mm PCB. It can be cut every 8 leds.

ecoled GRANADA "PRO"
OSRAM
LED



Medium luminosity flexible led strip, RGB, 12V, IP20, 6mm PCB. It can be cut every 3 leds.

ecoled ALICANTE RGB "PRO"



Medium luminosity flexible led strip, 12V, IP20, 5mm PCB. It can be cut every 4 leds.

ecoled CIES "PRO"



CIES



Ref: 32.004	6000°K
Ref: 32.005	4000°K
Ref: 32.006	3000°K
Ref: 32.007	red
Ref: 32.008	green
Ref: 32.009	blue

Single-coloured flexible strip **PRO**
IP20 with 198 leds/metre 2110SMD.
Requires use with led profile to permit dissipation.
5mm PCB.
Daily recommended use: 18h
Maximum connection in open circuit: 3m
Maximum connection in closed circuit: 6m

Power (W)	10W/m
Voltage (V)	12V
Led type	SMD2110
Lumens ^(6000°K)	1200 Lm/m
Lumens ^(4000°K)	1150 Lm/m
Lumens ^(3000°K)	1100 Lm/m
Light emission	120°
Waterproofing	IP20
N° leds/m	198
Measurements	5000x5x1.2mm
Cuttable*	every 15mm
PCB	5mm
Working temperature	-40°C / +60°C
Apt for	indoor
Packaging	1 roll/5m
Guarantee	3 years

* In red colour every 20mm

ALICANTE RGB



Ref: 32.010 RGB

Flexible led strip **RGB "PRO"**
IP20 with 198 leds/metre 3535SMD.
Requires use with led profile to permit dissipation.
Heat dissipation tape included.
6mm PCB.
Daily recommended use: 18h
Maximum connection in open circuit: 2.5m
Maximum connection in closed circuit: 5m

Power (W)	14.4W/m
Voltage (V)	12V
Led type	SMD3535
Lumens ^(blanco)	400 Lm/m
Light emission	120°
Waterproofing	IP20
N° leds/m	60
Measurements	5000x6x3mm
Cuttable	every 50mm
PCB	6mm
Working temperature	-20°C / +40°C
Secuencer	not included
Apt for	indoor
Packaging	1 roll/5m
Guarantee	3 years

GRANADA **OSRAM** LED



Ref: 33.027 6500°K
Ref: 33.028 4000°K
Ref: 33.029 2700°K

Single-coloured flexible led strip **"PRO"**
IP20 with 128 leds/metre 2835SMD.
Requires use with led profile to permit dissipation.
Heat dissipation tape included.
5mm PCB.
CRI >80.
Daily recommended use: 18h
Maximum connection in open circuit: 5m
Maximum connection in closed circuit: 10m

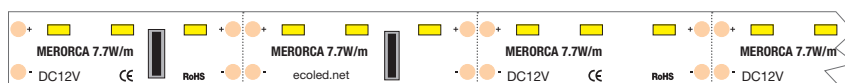
Power (W)	21W/m
Voltage (V)	24V
Led type	SMD2835
Lumens ^(6500°K)	3150 Lm/m
Lumens ^(4000°K)	3000 Lm/m
Lumens ^(2700°K)	2850 Lm/m
Light emission	120°
Waterproofing	IP20
N° leds/m	128
Measurements	5000x5x1.1mm
Cuttable	every 62.5mm ^(8 leds)
PCB	5mm
Working temperature	-20°C / +40°C
Apt for	indoor
Packaging	1 roll/5m
Guarantee	3 years



Chicago led profile

Our flexible led strips for SIDE LIGHTING are different from the other ones in this catalogue as they offer side illumination instead of front lighting and can be curved in an “S” shape.

These are specially suitable for very narrow led profiles, such as our Chicago (see page 58) and Dallas (see page 76). They are also ideal for corporate letters and commercial furnishings/displays where we need to bend the led strips.



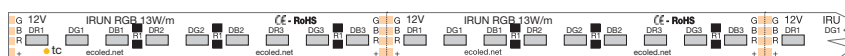
ecoled MENORCA “PRO”

Medium luminosity flexible led strip, 12V, IP67 waterproof DUO, 5mm PCB. It can be cut every 3 leds.



ecoled GETAFE “PRO”

Medium luminosity flexible led strip 12V, IP20, 6mm PCB. It can be cut every 3 leds.
Ideal for use with our Chicago and Dallas led profiles .



ecoled IRUN RGB “PRO”

Medium luminosity RGB flexible led strip (1 colour per led), 12V, IP20, 6mm PCB. It can be cut every 9 leds.
Ideal for use with our led profiles Chicago and Dallas.



MENORCA



Ref: 32.011 5500°K
 Ref: 32.012 4000°K
 Ref: 32.013 2800°K

Single-coloured flexible strip “PRO”
 IP67 with 96 leds/metre 3014SMD.

Side lighting flexible led strip.
5mm PCB.

Daily recommended use: 18h
 Maximum connection in open circuit: 7.5m
 Maximum connection in closed circuit: 15m

GETAFE



Ref: 32.014 6000°K
 Ref: 32.015 4000°K
 Ref: 32.016 2800°K

Single-coloured flexible strip “PRO”
 IP20 with 120 leds/metre 3014SMD.
 Requires use with led profile to permit dissipation.

Side lighting flexible led strip.
6mm PCB.

Daily recommended use: 18h
 Maximum connection in open circuit: 7.5m
 Maximum connection in closed circuit: 15m

IRUN^{RGB}



Ref: 32.017 RGB

RGB flexible led strip “PRO”
 IP20 with 180 leds/metre 3014SMD.
 Requires use with led profile to permit dissipation.

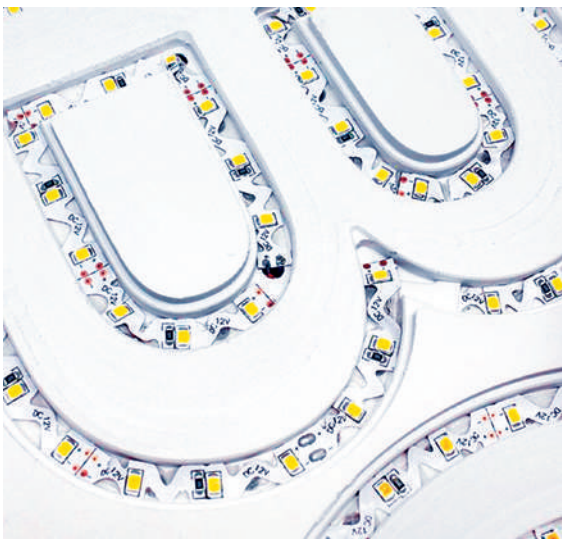
Side lighting flexible led strip.
6mm PCB.

Daily recommended use: 18h
 Maximum connection in open circuit: 4m
 Maximum connection in closed circuit: 8m

Power (W)	7.7W/m
Voltage (V)	12V
Led type	SMD3014
Lumens ^(5500°K)	600 Lm/m
Lumens ^(4000°K)	550 Lm/m
Lumens ^(2800°K)	500 Lm/m
Light emission	120°
Waterproofing	IP67
N° leds/m	96
Measurements	5000x5x10mm
Cutable	every 31mm
PCB	10mm
Working temperature	-20°C / +40°C
Apt for	indoor / outdoor
Packaging	1 roll/5m
Guarantee	3 years

Power (W)	10W/m
Voltage (V)	12V
Led type	SMD3014
Lumens ^(6000°K)	953 Lm/m
Lumens ^(4000°K)	946 Lm/m
Lumens ^(2800°K)	940 Lm/m
Light emission	120°
Waterproofing	IP20
N° leds/m	120
Measurements	5000x6x1.8mm
Cutable	every 25mm
PCB	6mm
Working temperature	-25°C / +45°C
Apt for	indoor
Packaging	1 roll/5m
Guarantee	3 years

Power (W)	13W/m
Voltage (V)	12V
Led type	SMD3014
Lumens ^(white)	400 Lm/m
Light emission	120°
Waterproofing	IP20
N° leds/m	180
Measurements	5000x6x1.6mm
Cutable	every 50mm ^(9 leds)
PCB	6mm
Working temperature	-20°C / +40°C
Apt for	indoor
Packaging	1 roll/5m
Guarantee	3 years



These flexible led strips are die-cut in ZIG-ZAG and this allows us to bend the PCB to achieve right angles, curves and geometrical shapes. They are ideal for corporate letters and for commercial furnishings, where we need to deal with irregular shapes.

Our AVILA model has undergone a waterproofing process called “nanocoating” which offers an IP54 and is covered in a very fine layer of plastic which is practically invisible and protects the flexible strip from humidity.



ecoled AVILA “PRO”

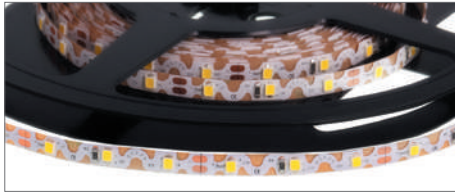
High luminosity flexible led strip with PCB in ZIG ZAG (maximum light power in this type of led).
12V, IP54, 6mm PCB. It can be cut every 3 leds.



ecoled JEREZ RGB “PRO”

Medium luminosity flexible RGB led strip with PCB in ZIG ZAG, 12V, IP20, 8.5mm PCB. It can be cut every 3 leds.

AVILA

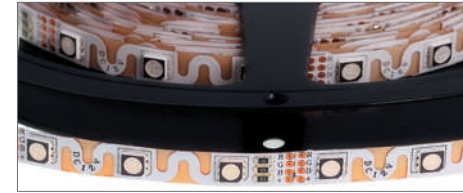


Ref: 32.018	6000°K
Ref: 32.019	4400°K
Ref: 32.020	3000°K
Ref: 32.021	blue
Ref: 32.022	red
Ref: 32.023	green
Ref: 32.024	amber

Single-coloured flexible led strip **PRO**
 IP54 **nanocoating** with 60 leds/metre 2835SMD.
 Requires use with led profile to permit dissipation.
Heat dissipation tape included.
6mm PCB.
 Daily recommended use: 18h
 Maximum connection in open circuit: 2.5m
 Maximum connection in closed circuit: 5m

Power (W)	12W/m
Voltage (V)	12V
Led type	SMD2835
Lumens ^(6000°K)	1100 Lm/m
Lumens ^(4400°K)	1000 Lm/m
Lumens ^(3000°K)	920 Lm/m
Light emission	120°
Waterproofing	IP54
N° leds/m	60
Measurements	5000x6x3mm
Cutable	every 50mm
PCB	6mm
Working temperature	-20°C / +40°C
Apt for	indoor / outdoor
Packaging	1 roll/5m
Guarantee	3 years

JEREZ ^{RGB}



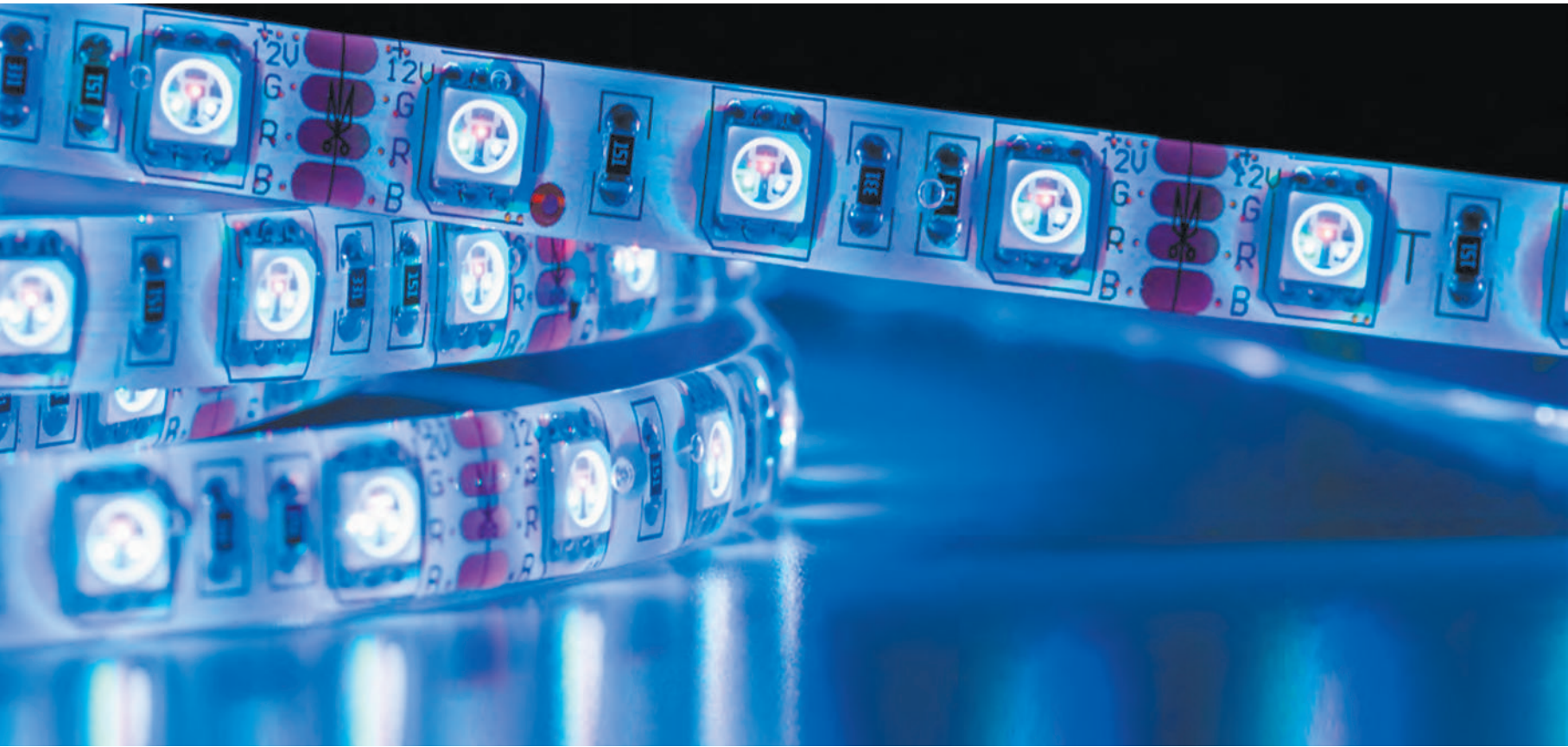
Ref: 32.028 RGB

RGB flexible strip PRO
 IP20 with 48 leds/metre 5050SMD.
 Requires use with led profile to permit dissipation.
Heat dissipation tape included.
10mm PCB.
 Daily recommended use: 18h
 Maximum connection in open circuit: 3.5m
 Maximum connection in closed circuit: 7m

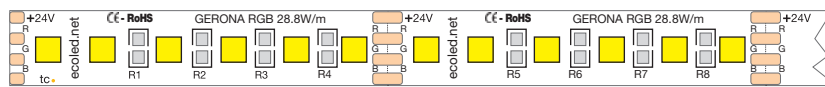
Power (W)	11.52W/m
Voltage (V)	12V
Led type	SMD5050
Lumens ^(white)	400 Lm/m
Light emission	120°
Waterproofing	IP20
N° leds/m	48
Measurements	5000x8.5x1.8mm
Cutable	every 60mm
PCB	8.5mm
Working temperature	-20°C / +40°C
Sequencer	not included
Apt for	indoor
Packaging	1 roll/5m
Guarantee	3 years



- Photometric curves and IES & LDT files (for DIALux and RELUX), can be carried out in our laboratory and available on request.

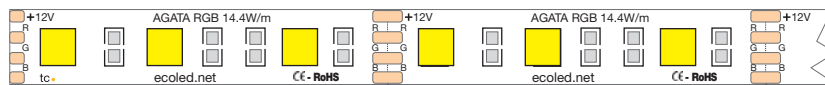


RGB flexible led strips (with 3 chips in the same diode). We can control the colour by means of a controller or sequencer. All the leds in the RGB flexible led strip display the same colour at the same time.



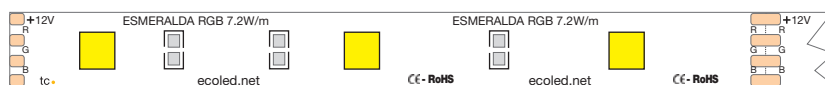
ecoled GERONA RGB "PRO"

Very high luminosity RGB flexible led strip, 24V, IP20, 10mm PCB. It can be cut every 6 leds.



ecoled AGATA RGB "BASIC"

Medium luminosity RGB flexible led strip, 12V, IP65, 10mm PCB. It can be cut every 3 leds.



ecoled ESMERALDA RGB "BASIC"

Low luminosity RGB flexible led strip, 12V, IP65, 10mm PCB. It can be cut every 3 leds.



ESMERALDA RGB



Ref: 30.015

RGB

RGB flexible led strip “BASIC”

IP65 with 30 leds/metre 5050SMD.

10 mm PCB.

Daily recommended use: 18h

Maximum connection in open circuit: 7.5m

Maximum connection in closed circuit: 15m

AGATA RGB



Ref: 30.016

RGB

RGB flexible led strip “BASIC”

IP65 with 60 leds/metre 5050SMD.

Requires use with led profile to permit dissipation.

10 mm PCB.

Daily recommended use: 18h

Maximum connection in open circuit: 5m

Maximum connection in closed circuit: 10m

GERONA RGB



Ref: 33.030

RGB

RGB flexible led strip “PRO”

IP20 with 120 leds/metre 3535SMD.

Requires use with led profile to permit dissipation.

Heat dissipation tape included.

10 mm PCB.

High power RGB led strip.

Daily recommended use: 18h

Maximum connection in open circuit: 4m

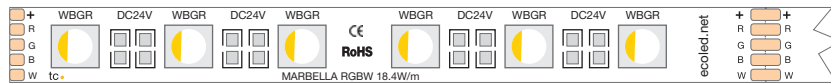
Maximum connection in closed circuit: 8m

Power (W)	7.2W/m
Voltage (V)	12V
Led type	SMD5050
Lumens ^(white)	221 Lm/m
Light emission	120°
Waterproofing	IP65
N° leds/m	30
Measurements	5000x10x4mm
Cutable	every 100mm
PCB	10mm
Working temperature	-20°C / +40°C
Sequencer	not included
Apt for	indoor / outdoor
Packaging	1 roll/5m
Guarantee	2 years

Power (W)	14.4W/m
Voltage (V)	12V
Led type	SMD5050
Lumens ^(white)	350 Lm/m
Light emission	120°
Waterproofing	IP65
N° leds/m	60
Measurements	5000x10x4mm
Cutable	every 50mm
PCB	10mm
Working temperature	-20°C / +45°C
Sequencer	not included
Apt for	indoor / outdoor
Packaging	1 roll/5m
Guarantee	2 years

Power (W)	28.8W/m
Voltage (V)	24V
Led type	SMD3535
Lumens ^(white)	800 Lm/m
Light emission	120°
Waterproofing	IP20
N° leds/m	120
Measurements	5000x10x3mm
Cutable	every 50mm
PCB	10mm
Working temperature	-20°C / +40°C
Sequencer	not included
Apt for	indoor
Packaging	1 roll/5m
Guarantee	3 years

RGB+W high power flexible led strip which combines in one housing a red-green-blue chip along with warm white. We can achieve a wider range of colours than with a normal RGB led (a more intense white and also coloured degradation to offer pastel tones). It comes with heat dissipation tape. On pages 314 & 315 you can also see controllers and amplifiers for this product.



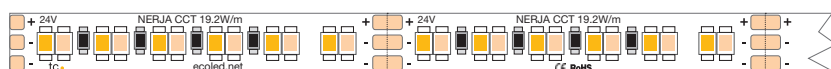
Very high luminosity RGB+W flexible led strip, 24V, IP20, 10mm PCB. It can be cut every 6 leds.

ecoled MARBELLA RGB+3000°K "PRO"



This is a flexible led strip with adjustable white, CCT (correlated colour temperature) with high luminosity which combines a cold white led with a warm white led.

The fact that both leds are together, means that the colour projected is a combination of both and if we use a suitable controller (see pages 314 & 315), it can vary from 3100°K to 6500°K.



Very high CCT flexible led strip, 24V, IP20, 8mm PCB. It can be cut every 6 leds.

ecoled NERJA CCT "PRO"



MARBELLA RGB+3000°K



Ref: 33.031

RGB+3000°K

RGB+W flexible led strip “PRO”

IP20 with 60 leds/metre 5050SMD.

Requires use with led profile to permit dissipation.

Heat dissipation tape included.**White colour (included in led chip)****10mm PCB.**

Daily recommended use: 18h

Maximum connection in open circuit: 6m

Maximum connection in closed circuit: 12m

Power (W)	18.4W/m
Voltage (V)	24V
Led type	SMD5050
Lumens (RGBW)	800 Lm/m
Light emission	120°
Waterproofing	IP20
N° leds/m	60
Measurements	5000x10x1.8mm
Cutttable	every 100mm
PCB	10mm
Working temperature	-20°C / +40°C
Sequencer	not included
Apt for	indoor
Packaging	1 roll/5m
Guarantee	3 years

NERJA Warm white + Cool white



Ref: 33.032

3100°K - 6500°K

Flexible led strip **DUAL WW-CW “PRO”**

IP20 with 120 leds/metre 3527SMD.

Requires use with led profile to permit dissipation.

Heat dissipation tape included.**Allows colour change (cool white, neutral and warm white).****8mm PCB.**

Daily recommended use: 18h

Maximum connection in open circuit: 7.5m

Maximum connection in closed circuit: 15m

Power (W)	19.2W/m
Voltage (V)	24V
Led type	SMD3527
Lumens (3100°K - 6500°K)	1500 Lm/m
Light emission	120°
Waterproofing	IP20
N° leds/m	120
Measurements	5000x8x1.9mm
Cutttable	every 50mm
PCB	8mm
Working temperature	-20°C / +40°C
Apt for	indoor
Packaging	1 roll/5m
Guarantee	3 years



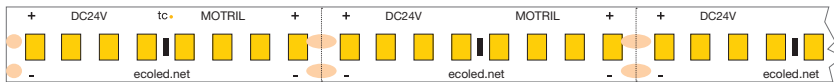
Flexible led strips with a high CRI (Colour Rendering Index), which are specially indicated for the food industry: fruit, vegetables, meat/poultry and bakery products.

Compared with the R9-R14, they offer us greater values, whereby we achieve much more natural and realistic colours and therefore suggesting improved freshness and attractiveness of the exposed product.



ecoled TREVELEZ "PRO"

High luminosity flexible led strip, 24V, IP54 nanocoating, 10mm PCB. Ideal for the meat and poultry industry. It can be cut every 8 leds.



ecoled MOTRIL "PRO"

High luminosity flexible led strip, 24V, IP54 nanocoating, 10mm PCB. Ideal for the bread and bakery industry. It can be cut every 8 leds.



ecoled ANTEQUERA "PRO"

High luminosity flexible led strip, 24V, IP54 nanocoating, 10mm PCB. Ideal for the fruit and vegetable industry. It can be cut every 8 leds.

TREVELEZ



Ref: 33.033

2100°K

Special for MEATS

Single-coloured flexible strip “PRO”
IP54 **nanocoating** with 192 leds/metre 3528SMD.
Requires use with led profile to permit dissipation.

Heat dissipation tape included.

10mm PCB.

Daily recommended use: 18h

Maximum connection in open circuit: 5m

Maximum connection in closed circuit: 7m

Power (W)	20W/m
Voltage (V)	24V
Led type	SMD3528
Lumens ^(2100°K)	1600 Lm/m
Light emission	120°
Waterproofing	IP54
CRI	Ra>90
N° leds/m	192
Measurements	5000x10x2.5mm
Cutable	every 41.6mm
PCB	10mm
Working temperature	-40°C / +60°C
Apt for	indoor/fridges
Packaging	1 roll/5m
Guarantee	3 years



Highlights the red colours and reduces the browning effect in the sectioned part.

MOTRIL



Ref: 33.034

2500°K

Special for BAKERIES

Single-coloured flexible strip “PRO”
IP54 **nanocoating** with 192 leds/metre 3528SMD.
Requires use with led profile to permit dissipation.

Heat dissipation tape included.

10mm PCB.

Daily recommended use: 18h

Maximum connection in open circuit: 5m

Maximum connection in closed circuit: 7m

Power (W)	20W/m
Voltage (V)	24V
Led type	SMD3528
Lumens ^(2500°K)	1800 Lm/m
Light emission	120°
Waterproofing	IP54
CRI	Ra>90
N° leds/m	192
Measurements	5000x10x2.5mm
Cutable	every 41.6mm
PCB	10mm
Working temperature	-40°C / +60°C
Apt for	indoor/fridges
Packaging	1 roll/5m
Guarantee	3 years



Highlights the yellow and brown colours, with a golden touch.

ANTEQUERA



Ref: 33.035

6000°K

Special for FRUIT and VEGETABLES

Single-coloured flexible strip “PRO”
IP54 **nanocoating** with 192 leds/metre 3528SMD.
Requires use with led profile to permit dissipation.

Heat dissipation tape included.

10mm PCB.

Daily recommended use: 18h

Maximum connection in open circuit: 5m

Maximum connection in closed circuit: 7m

Power (W)	20W/m
Voltage (V)	24V
Led type	SMD3528
Lumens ^(6000°K)	2200 Lm/m
Light emission	120°
Waterproofing	IP54
CRI	Ra>90
N° leds/m	192
Measurements	5000x10x2.5mm
Cutable	every 41.6mm
PCB	10mm
Working temperature	-40°C / +60°C
Apt for	indoor/fridges
Packaging	1 roll/5m
Guarantee	3 years




Highlights the cooler colours, giving a fresher appearance to the product.



www.digitalled.net

by Luz Negra

Digital lighting is an intelligent way to personalise light in fine details and to be able to communicate by means of emotions and sensations. In order to go further afield with the digital lighting experience, Luz Negra has established a partnership with,  ProtoPixel who are specialised in software and hardware design for digital lighting control.

Here at Luz Negra we are able to offer full support and assistance for any type of project related to digital lighting. We can work together, starting off with the initial concept and design and taking it through to the manufacturing of the luminaires or supports and also the calculations for the electrical connections and hardware. We can even offer custom programming solutions which are completely personalised and which can be updated via internet no matter where the installation is located.



OVNEW Restaurant (Barcelona).
Illuminated with more than 100 Oslo luminaires with digital led . Design, control and installation made by Protopixel.

FIJI RGB
"cuttable every 1 led"



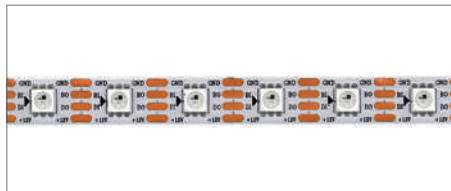
Ref: 35.001

RGB

Flexible led strip with digital led in RGB "PRO" series, IP20 with 60 leds/metre and cuttable every led.

Requires use with led profile to permit dissipation.
5mm PCB.

HAWAI RGB
"cuttable every 1 led"



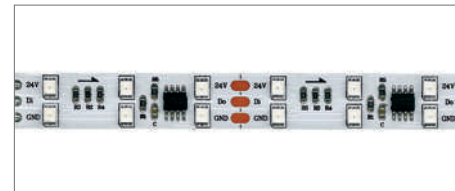
Ref: 35.002

RGB

Flexible led strip with digital led in RGB "PRO" series, IP20 with 60 leds/metre and cuttable every led.

Requires use with led profile to permit dissipation.
10mm PCB.

SEYCHELLES RGB
"cuttable every 6 led"



Ref: 35.003

RGB

Flexible led strip with digital led in RGB, "PRO" series IP20 with 120 leds/metre and cuttable every 6 leds.

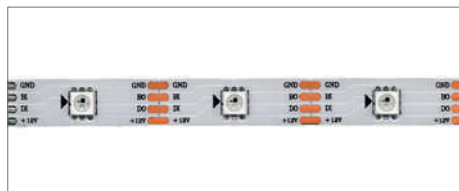
Requires use with led profile to permit dissipation.
12mm PCB.

Power (W)	11.5W/m
Voltage (V)	5V
IC type	SK6812
Lumens	308 Lm/m
Led Control	led to led
Light emission	120°
Waterproofing	IP20
N° leds/m	60 Leds/m
Measurements	5000x5x2.5mm
Cuttable	every 16.54mm
PCB	5mm
Working temperature	-20°C / +60°C
Apt for	indoor
Packaging	1 roll/5m
Guarantee	3 years

Power (W)	14.4W/m
Voltage (V)	12V
IC type	2815
Lumens	438 Lm/m
Led Control	led to led
Light emission	120°
Waterproofing	IP20
N° leds/m	60 Leds/m
Measurements	5000x10x2.5mm
Cuttable	every 16.8mm
PCB	10mm
Working temperature	-20°C / +60°C
Apt for	indoor
Packaging	1 roll/5m
Guarantee	3 years

Power (W)	28.8W/m
Voltage (V)	24V
IC type	16703
Lumens	592 Lm/m
Led Control	every 6 leds
Light emission	120°
Waterproofing	IP20
N° leds/m	120 Leds/m
Measurements	5000x12x2.5mm
Cuttable	every 50mm ^(6 leds)
PCB	12mm
Working temperature	-20°C / +60°C
Apt for	indoor
Packaging	1 roll/5m
Guarantee	3 years

COZUMEL RGB
"cuttable every 1 led"



Ref: 35.004

RGB

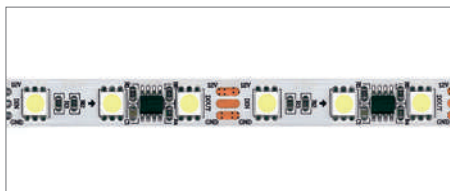
Flexible led strip with digital led in RGB, "PRO" series IP20 with 30 leds/metre and cuttable every led.

Requires use with led profile to permit dissipation.
10mm PCB.

Maximum connection in open circuit: 18h

Power (W)	7.2W/m
Voltage (V)	12V
IC type	2815
Lumens	112 Lm/m
Led Control	led to led
Light emission	120°
Waterproofing	IP20
N° leds/m	30 Leds/m
Measurements	5000x10x2.5mm
Cuttable	every 33.2mm
PCB	10mm
Working temperature	-20°C / +60°C
Apt for	indoor
Packaging	1 roll/5m
Guarantee	3 years

BALI warm white
"cuttable every 3 leds" - control led to led



Ref: 35.006

7.000°K

Ref: 35.007

3.000°K

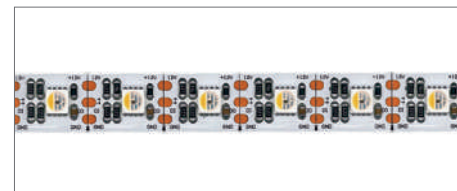
Flexible led strip with warm white monochromatic digital led, "PRO" series, IP20 with 60 leds/metre and cuttable every 3 leds + led to led control.

Requires use with led profile to permit dissipation.
10mm PCB.

Maximum connection in open circuit: 18h.

Power (W)	14.4W/m
Voltage (V)	12V
IC type	2811
Lumens ^(7000°K)	1000 Lm/m
Lumens ^(3000°K)	994 Lm/m
Led Control	led to led
Light emission	120°
Waterproofing	IP20
N° leds/m	60 Leds/m
Measurements	5000x10x2.5mm
Cuttable	every 50mm (3 leds)
PCB	10mm
Working temperature	-20°C / +60°C
Apt for	indoor
Packaging	1 roll/5m
Guarantee	3 years

MALDIVAS RGB+W
"cuttable every 1 led"



Ref: 35.008

RGB+W

Flexible led strip with digital led in RGBW, "PRO" series IP20 with 60 leds/metre and cuttable every led.

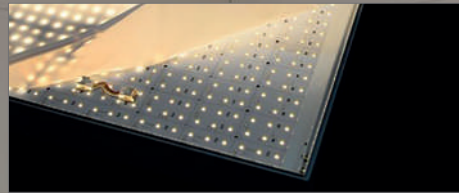
Requires use with led profile to permit dissipation.
10mm PCB.

Maximum connection in open circuit: 18h.

Power (W)	20W/m
Voltage (V)	12V
IC type	6812
Lumens	500 Lm/m
Led Control	led to led
Light emission	120°
Waterproofing	IP20
N° leds/m	60 Leds/m
Measurements	5000x10x2.5mm
Cuttable	every 16.8mm
PCB	10mm
Working temperature	-20°C / +60°C
Apt for	indoor
Packaging	1 roll/5m
Guarantee	3 years



OVNEW restaurant.
Luminaires with Oslo led profile.
Cortesy of Protopixel.



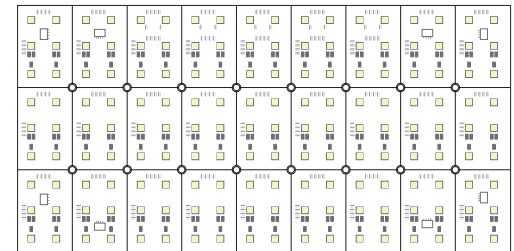
Power (W)	18W
Voltage (V)	24V
Led type	5050
Lumens	665 Lm
Light emission	120°
Waterproofing	IP20
N° leds/m	162 Leds/m
Measurements	480x240x5mm
Cutable	it is cutable basing on the cutting line
PCB	480x240
Working temperature	-25°C / +60°C
Apt for	indoor
Packaging	1 unit
Guarantee	2 years

Ref: 46.001

RGB

Flexible RGB panel for indoor use (480x240mm) which can be cut in to 27 modules of 80x53mm (6 leds/ module). It is specially recommended for backlighting (luminaires and lightboxes). It has fast connectors to put various panels together without welding. We can connect up to 10 panels in series

RGB FLEXIBLE PANEL



Power (W)	10W
Voltage (V)	24V
Led type	2835
Lumens (3000°K)	978 Lm
Light emission	120°
Waterproofing	IP20
N° leds/m	288 Leds/m
Measurements	480x240x5mm
Cutable	it is cutable basing on the cutting line
PCB	480x240mm
Working temperature	-25°C / +60°C
Apt for	indoor
Packaging	1 unit
Guarantee	2 years

Ref: 46.002

3000°K-6000°K

Flexible TUNABLE WHITE panel for indoor use (480x240mm) which can be cut in to 48 modules of 60x40mm, with 6 cold leds and 6 warm leds. It is specially recommended for backlighting (luminaires and lightboxes). It has fast connectors to put various panels together without welding. We can connect up to 10 panels in series.

TUNABLE WHITE FLEXIBLE PANEL

