

ALTA LUMINOSIDAD

NERJA

TIRAS FLEXIBLES

Ref: 33.032

3100°K - 6500°K

Tira flexible **DUAL WW-CW** serie "PRO"

IP20 con 120 leds/metro 3528SMD.

Requiere uso de led profile para disipación.

Cinta térmica disipadora incluida.

Permite cambio de color (blanco frío, neutro y blanco cálido)

PCB 10mm

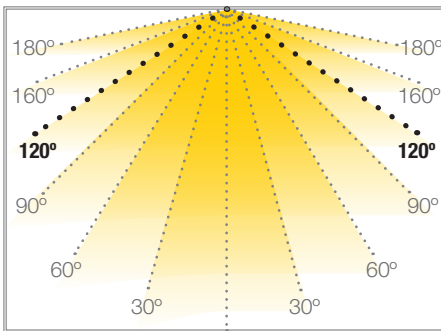
Uso diario máximo recomendado: 18h

Conexión máxima en circuito abierto: 7.5m

Conexión máxima en circuito cerrado: 15m

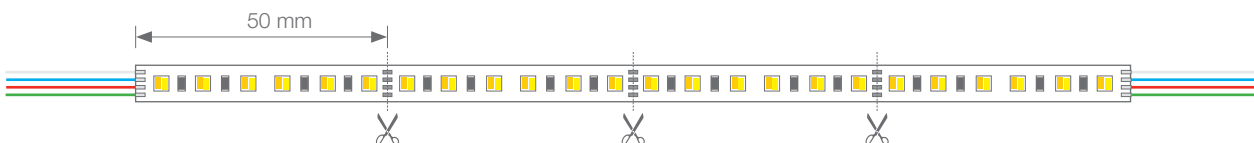
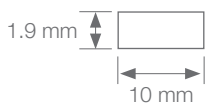
Vida útil: 50.000h*

*En función de la disipación del perfil, de las horas diarias trabajadas y de la temperatura externa ambiental de trabajo.



Potencia (W)	19.2W/m
Voltaje (V)	24V
Tipo Led	SMD3528
Lumens (3100°K-6500°K)	1500 Lm/m
CRI	>80
Emisión de luz	120°
Estanqueidad (IP)	IP20
Nº leds/m	120
Medidas	5000x10x1.9mm
Cortable	cada 50mm
PCB	10mm
Temperatura trabajo	-20°C / +40°C
Apto para	interior
Embalaje	1 rollo/5m
Garantía	3 años

Aprobado por: 

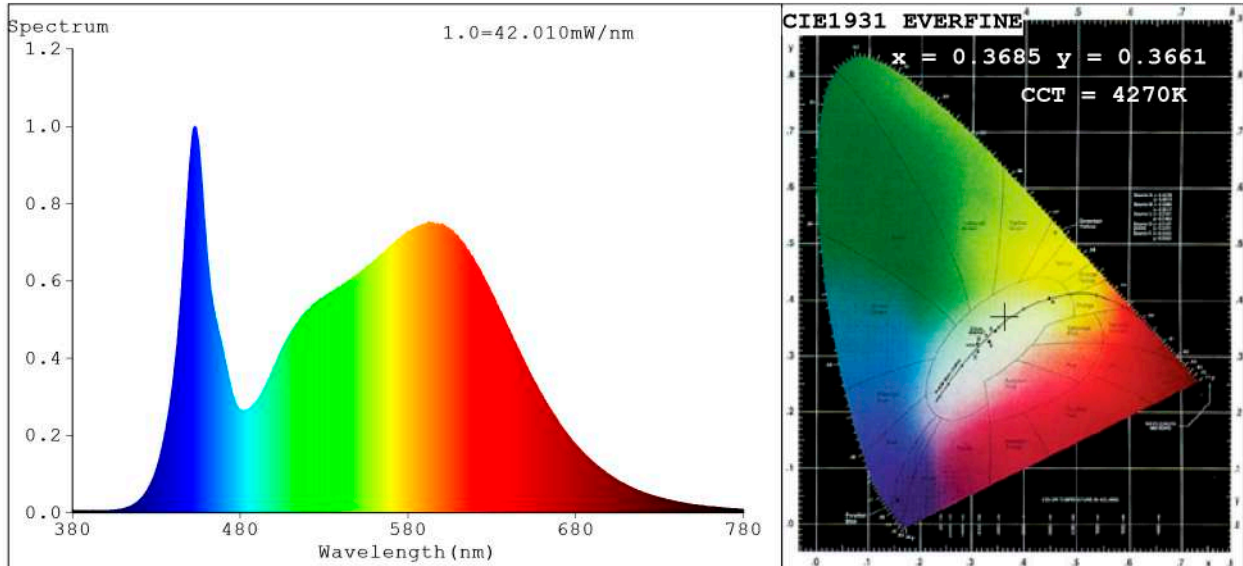


BARCELONA
C/ Carles Buhigues, 13
08420 Canovelles
Info@luznegra.net
Tel: +34 938 402 598

MADRID
C/ Minas, 35-37
28923 Alcorcón
centro@luznegra.net
Tel: +34 916 416 081

PARIS
113 Avenue Joffre
77450 Esbly
france@luznegra.net
Tel: +33 (0) 160 426 585

Spectrum Test Report



Color Parameters:

Chromaticity Coordinate: $x=0.3685$ $y=0.3661$ / $u'=0.2215$ $v'=0.4950$
 CCT=4270K (Duv=-0.0014) Dominant WL:Ld =579.0nm Purity=20.4%
 Ratio:R=17.9% G=77.9% B=4.1%; Peak WL:Lp=452.9nm FWHM=22.1nm
 Render Index:Ra=84.9 CRI=78.9 TM30:Rf=83 Rg=96
 R1 =84 R2 =92 R3 =95 R4 =83 R5 =84 R6 =87 R7 =87
 R8 =68 R9 =18 R10=79 R11=82 R12=62 R13=86 R14=98 R15=79

Photo Parameters:

Flux = 1859 lm Eff. : 98.03 lm/W Fe = 5.772 W Scotopic:3344.1 S/P:1.7986

Electrical parameters:

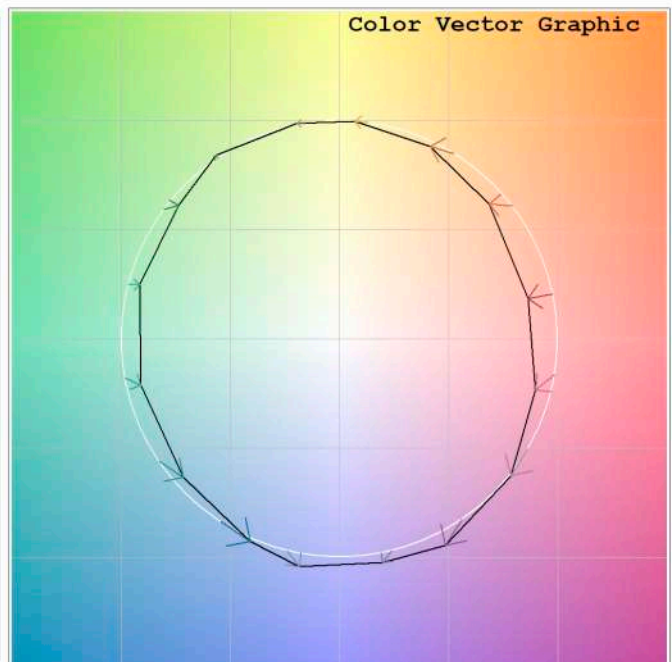
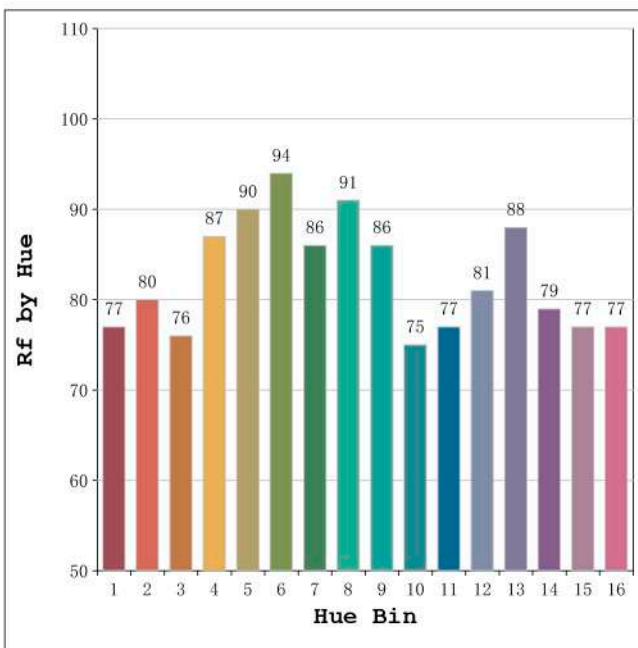
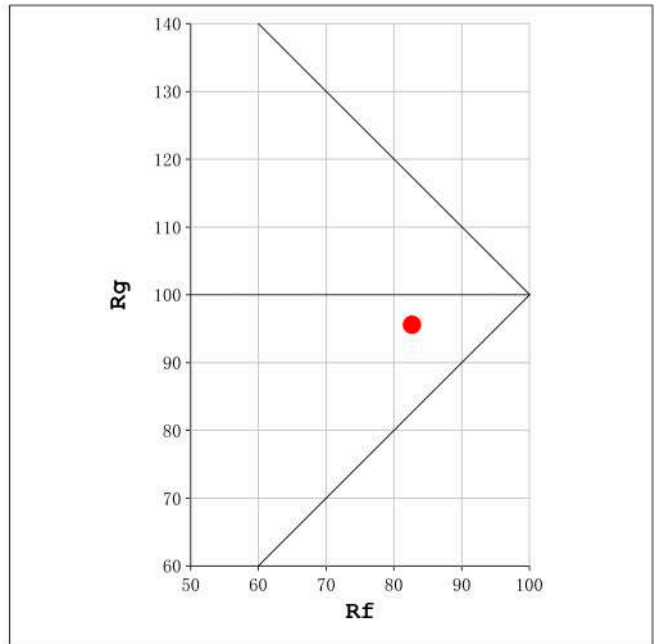
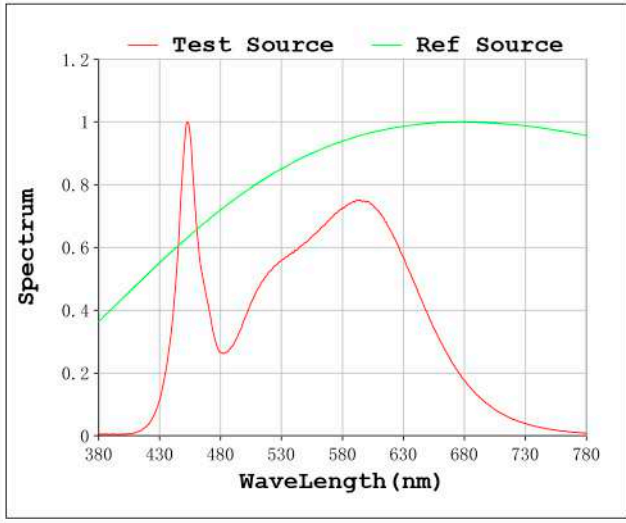
V = 23.998 V I = 0.7903 A P = 18.97 W PF = 1.000

Status: Integral T = 500 ms Ip = 33756 (52%)

Model:Ecoled nerja
 Tester:Sergio Carneros
 Temperature:27Deg
 Manufacturer:Luz Negra S.L

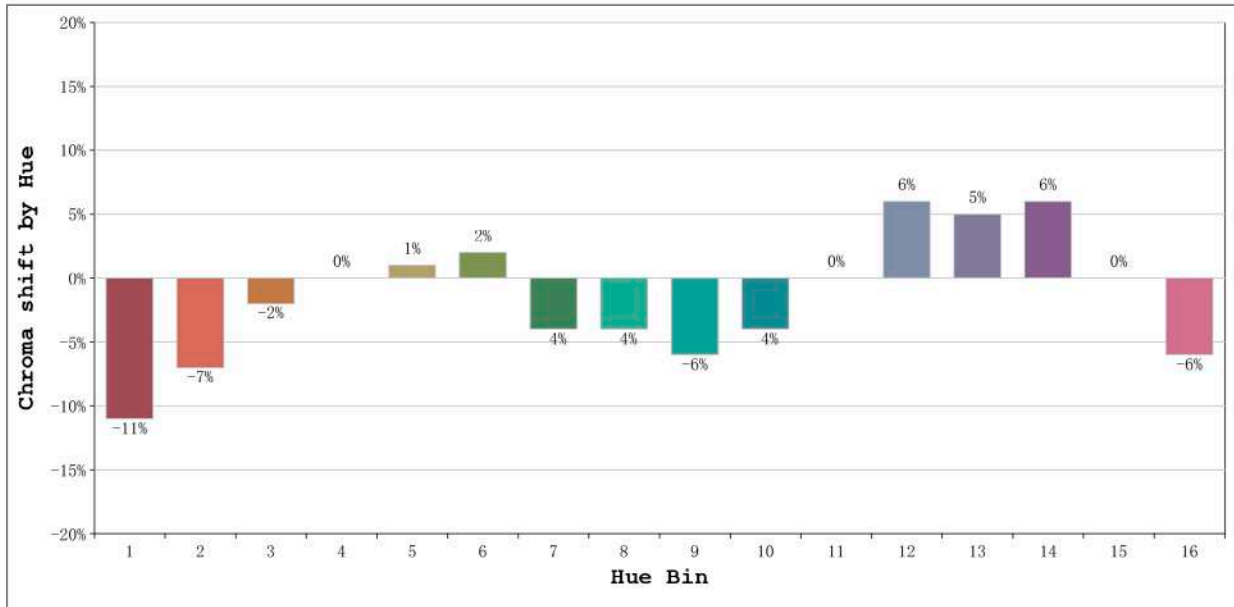
Number: 33.032
 Date:25-5-2021
 Humidity:57%
 Remarks:100cm de tira flexible

Rf: 83 CCT: 4270 K u': 0.2215
Rg: 96 Duv: -0.0014 v': 0.4950



Model:Ecoled nerja
Tester:Sergio Carneros
Temperature:27Deg
Manufacturer:Luz Negra S.L

Number: 33.032
Date:25-5-2021
Humidity:57%
Remarks:100cm de tira flexible



Hue Bin	Hue Angle	Rf	Graphic shift(%)	
			Chroma	Hue
1	0.0° - 22.5°	77	-11	0
2	22.5° - 45.0°	80	-7	6
3	45.0° - 67.5°	76	-2	11
4	67.5° - 90.0°	87	0	6
5	90.0° - 112.5°	90	1	3
6	112.5° - 135.0°	94	2	-1
7	135.0° - 157.5°	86	-4	-4
8	157.5° - 180.0°	91	-4	0
9	180.0° - 202.5°	86	-6	5
10	202.5° - 225.0°	75	-4	12
11	225.0° - 247.5°	77	0	16
12	247.5° - 270.0°	81	6	7
13	270.0° - 292.5°	88	5	-4
14	292.5° - 315.0°	79	6	-12
15	315.0° - 337.5°	77	0	-14
16	337.5° - 360.0°	77	-6	-8

Model:Ecoled nerja
Tester:Sergio Carneros
Temperature:27Deg
Manufacturer:Luz Negra S.L

Number: 33.032
Date:25-5-2021
Humidity:57%
Remarks:100cm de tira flexible