

## MEDIA LUMINOSIDAD

## JEREZ

## TIRAS FLEXIBLES

Ref: 32.028

RGB

Tira flexible RGB serie "PRO"

IP20 con 48 leds/metro 5050SMD.

Requiere uso de led profile para disipación.

**Cinta térmica disipadora incluida.**

**PCB 8.5mm**

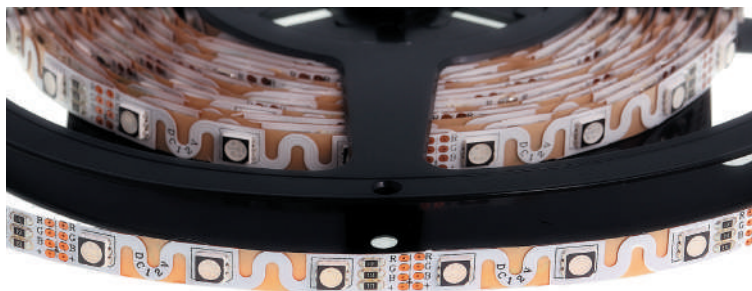
Uso diario máximo recomendado: 18h

Conexión máxima en circuito abierto: 3.5m

Conexión máxima en circuito cerrado: 7m

Vida útil: 50.000h\*

\*En función de la disipación del perfil, de las horas diarias trabajadas y de la temperatura externa ambiental de trabajo.



potencia



120°



voltaje



IP20



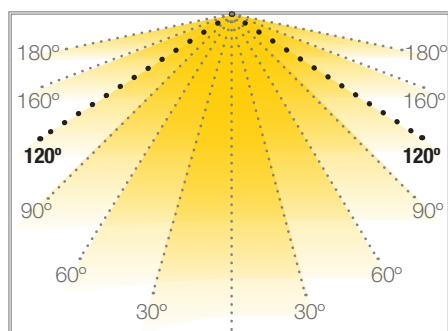
60 mm



interior

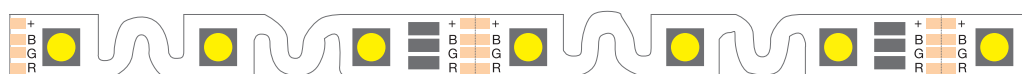
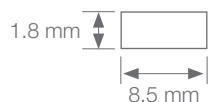


trabajo



Potencia (W)	11.52W/m
Voltaje (V)	12V
Tipo Led	SMD5050
Lumens (blanco)	400 Lm/m
CRI	>25
Emisión de luz	120°
Estanqueidad (IP)	IP20
Nº leds/m	48
Medidas	5000x8.5x1.8mm
Cortable	cada 60mm
PCB	8.5mm
Temperatura trabajo	-20°C / +40°C
Secuenciador	no incluido
Apto para	interior
Embalaje	1 rollo/5m
Garantía	3 años

Aprobado por: CE RoHS COMPLIANT

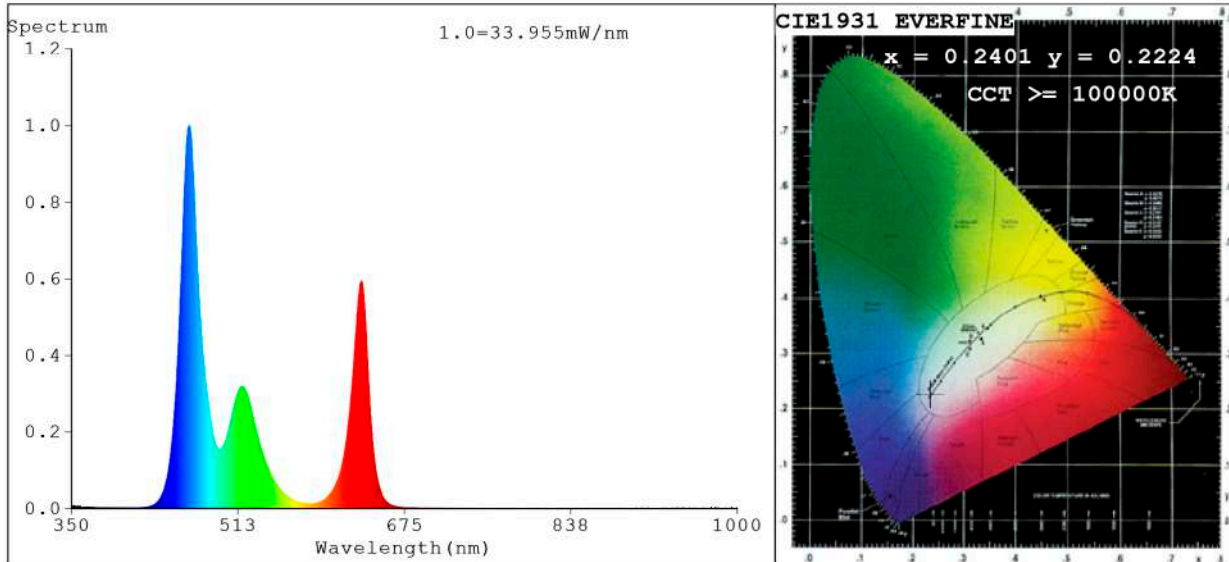


**BARCELONA**  
C/ Carles Buhigues, 13  
08420 Canovelles  
Info@luznegra.net  
Tel: +34 938 402 598

**MADRID**  
C/ Minas, 35-37  
28923 Alcorcón  
centro@luznegra.net  
Tel: +34 916 416 081

**PARIS**  
113 Avenue Joffre  
77450 Esbly  
france@luznegra.net  
Tel: +33 (0) 160 426 585

**Spectrum Test Report**



**Color Parameters:**

Chromaticity Coordinate:  $x=0.2401$   $y=0.2224$   $u'=0.1851$   $v'=0.3858$   
 CCT=100000K(Duv=-0.0098) Dominant WL:Ld =473.1nm Purity=42.8%  
 Ratio:R=24.2% G=58.8% B=17.0%; Peak WL:Lp=464.6nm FWHM=20.0nm  
 Render Index:Ra=29.4 CRI=27.1 TM30:Rf=30 Rg=115  
 R1 =6 R2 =30 R3 =55 R4 =35 R5 =32 R6 =32 R7 =46  
 R8 =0 R9 =0 R10=0 R11=30 R12=36 R13=6 R14=71 R15=0

**Photo Parameters:**

Flux = 325.1 lm Eff. : 34.18 lm/W Fe = 1.680 W Scotopic:1494.8 S/P:4.5981

**Electrical parameters:**

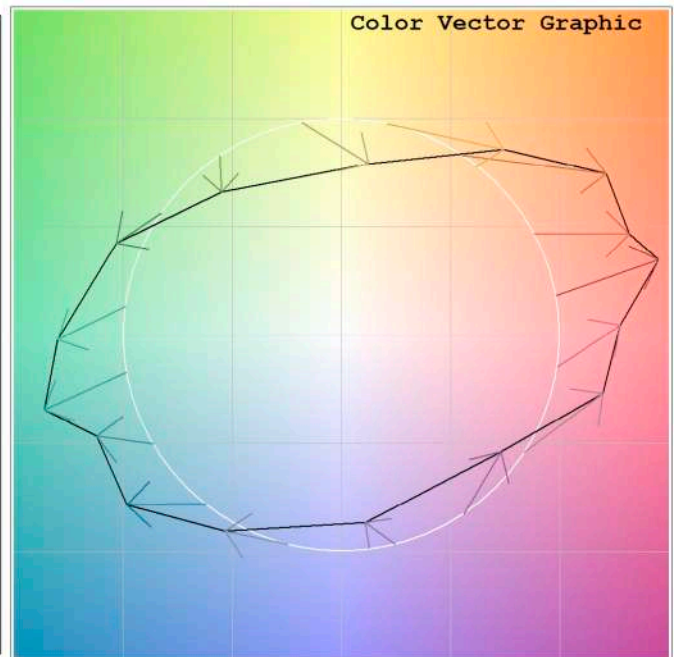
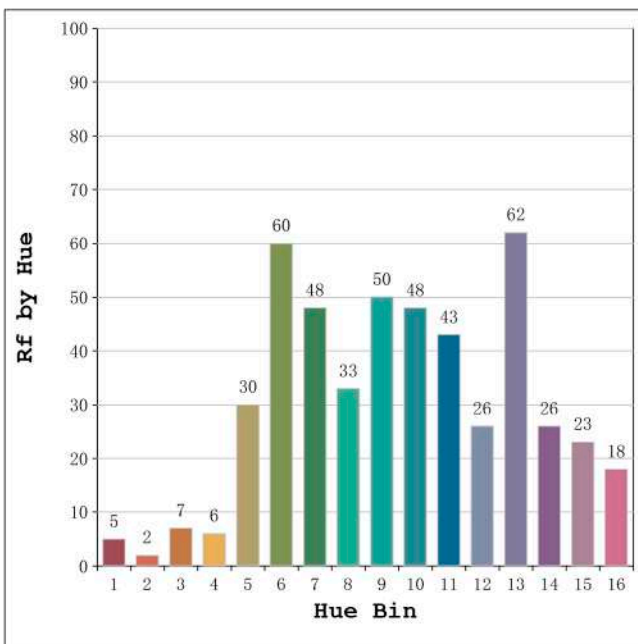
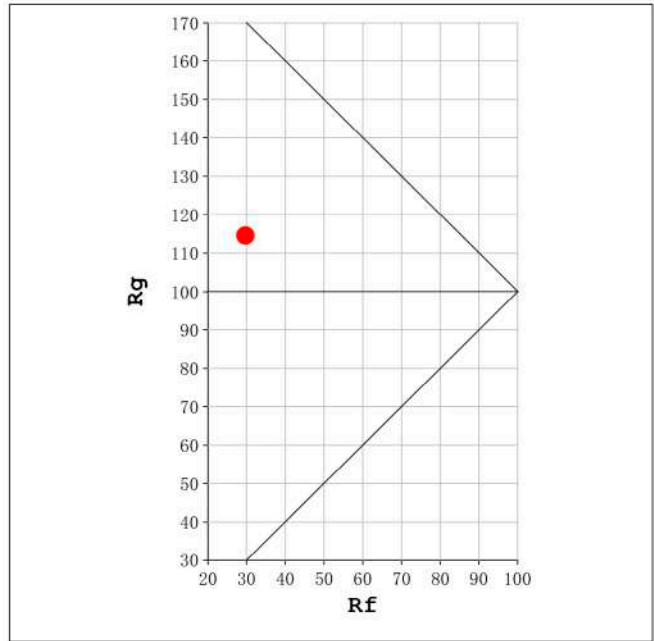
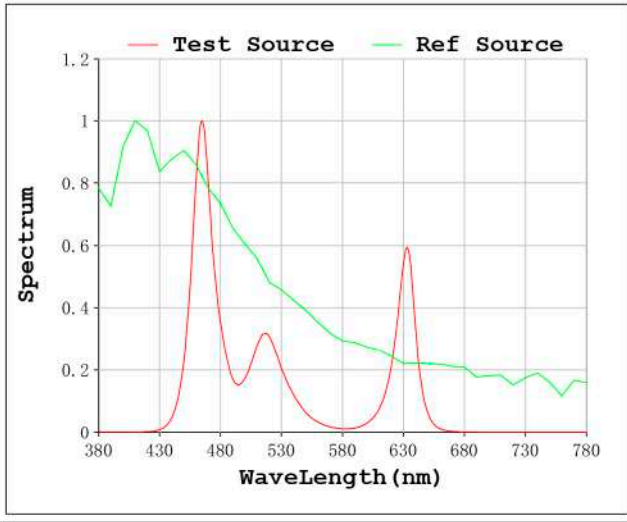
V = 11.998 V I = 0.7927 A P = 9.511 W PF = 1.000

Status: Integral T = 825 ms Ip = 49681 (76%)

Model:Ecoled Jerez RGB  
 Tester:Sergio Carneros  
 Temperature:21Deg  
 Manufacturer:Luz Negra S.L

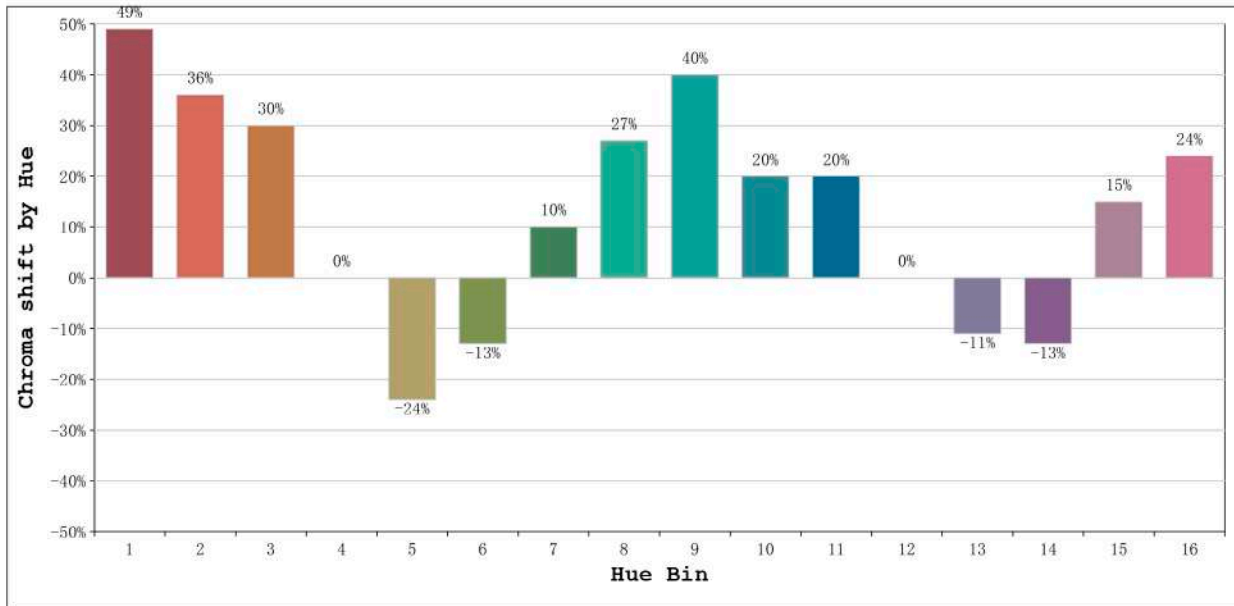
Number: 32.028  
 Date:25-5-2021  
 Humidity:57%  
 Remarks:100cm de tira flexible

Rf: 30 CCT: 100000 K u': 0.1851  
Rg: 115 Duv: -0.0098 v': 0.3858



Model:Ecoled Jerez RGB  
Tester:Sergio Carneros  
Temperature:21Deg  
Manufacturer:Luz Negra S.L

Number: 32.028  
Date:25-5-2021  
Humidity:57%  
Remarks:100cm de tira flexible

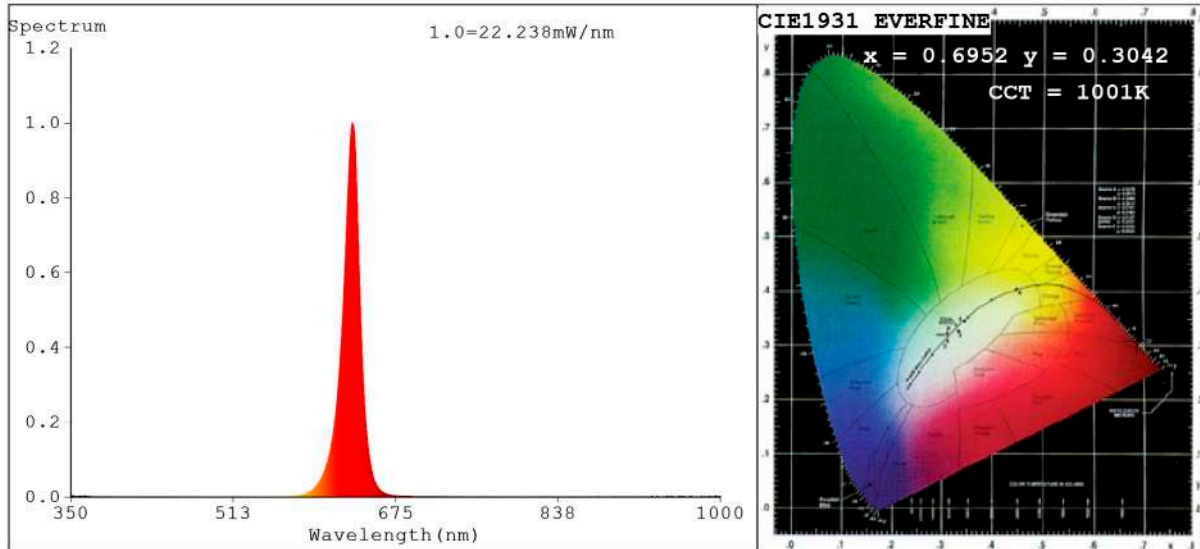


Hue Bin	Hue Angle	Rf	Graphic shift(%)	
			Chroma	Hue
1	0.0° - 22.5°	5	49	7
2	22.5° - 45.0°	2	36	-24
3	45.0° - 67.5°	7	30	-58
4	67.5° - 90.0°	6	0	-54
5	90.0° - 112.5°	30	-24	-26
6	112.5° - 135.0°	60	-13	8
7	135.0° - 157.5°	48	10	23
8	157.5° - 180.0°	33	27	22
9	180.0° - 202.5°	50	40	10
10	202.5° - 225.0°	48	20	-16
11	225.0° - 247.5°	43	20	-28
12	247.5° - 270.0°	26	0	-28
13	270.0° - 292.5°	62	-11	-10
14	292.5° - 315.0°	26	-13	30
15	315.0° - 337.5°	23	15	43
16	337.5° - 360.0°	18	24	25

Model:Ecoled Jerez RGB  
 Tester:Sergio Carneros  
 Temperature:21Deg  
 Manufacturer:Luz Negra S.L

Number: 32.028  
 Date:25-5-2021  
 Humidity:57%  
 Remarks:100cm de tira flexible

**Spectrum Test Report**



**Color Parameters:**

Chromaticity Coordinate:  $x=0.6952$   $y=0.3042$  /  $u'=0.5287$   $v'=0.5205$   
 CCT=1001K (Duv=-0.0812) Dominant WL:Ld =622.3nm Purity=99.8%  
 Ratio:R=95.4% G=4.6% B=0.0% ; Peak WL:Lp=631.6nm FWHM=17.3nm  
 Render Index:Ra=27.7 CRI=33.2 TM30:Rf=18 Rg=-1  
 R1 =8 R2 =78 R3 =33 R4 =0 R5 =4 R6 =89 R7 =9  
 R8 =0 R9 =0 R10=72 R11=0 R12=79 R13=31 R14=61 R15=0

**Photo Parameters:**

Flux = 91.68 lm Eff. : 25.96 lm/W Fe = 475.2 mW Scotopic:4.912 S/P:0.053575

**Electrical parameters:**

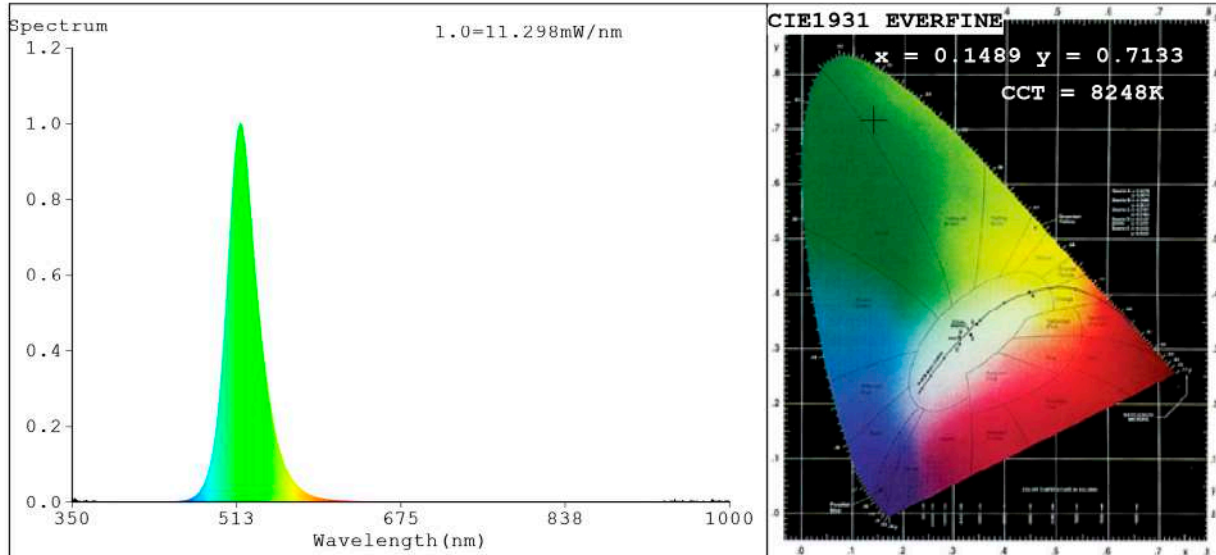
V = 11.998 V I = 0.2944 A P = 3.532 W PF = 1.000

Status: Integral T = 1444 ms Ip = 49388 (75%)

Model:Ecoled Jerez rojo  
 Tester:Sergio Carneros  
 Temperature:21Deg  
 Manufacturer:Luz Negra S.L

Number: 32.028  
 Date:25-5-2021  
 Humidity:57%  
 Remarks:100cm de tira flexible

**Spectrum Test Report**



**Color Parameters:**

Chromaticity Coordinate:  $x=0.1489$   $y=0.7133$  /  $u'=0.0529$   $v'=0.5700$   
 CCT=8248K (Duv=0.1621) Dominant WL:  $\lambda_d = 522.1nm$  Purity=76.0%  
 Ratio: R=0.3% G=96.5% B=3.2%;; Peak WL:  $\lambda_p = 516.3nm$  FWHM=32.7nm  
 Render Index: Ra=0.0 CRI=2.8 TM30: Rf=0 Rg=8  
 R1 =0 R2 =0 R3 =0 R4 =0 R5 =0 R6 =0 R7 =0  
 R8 =0 R9 =0 R10=0 R11=0 R12=0 R13=0 R14=39 R15=0

**Photo Parameters:**

Flux = 196.7 lm Eff. : 60.67 lm/W Fe = 435.2 mW Scotopic: 618.39 S/P: 3.1441

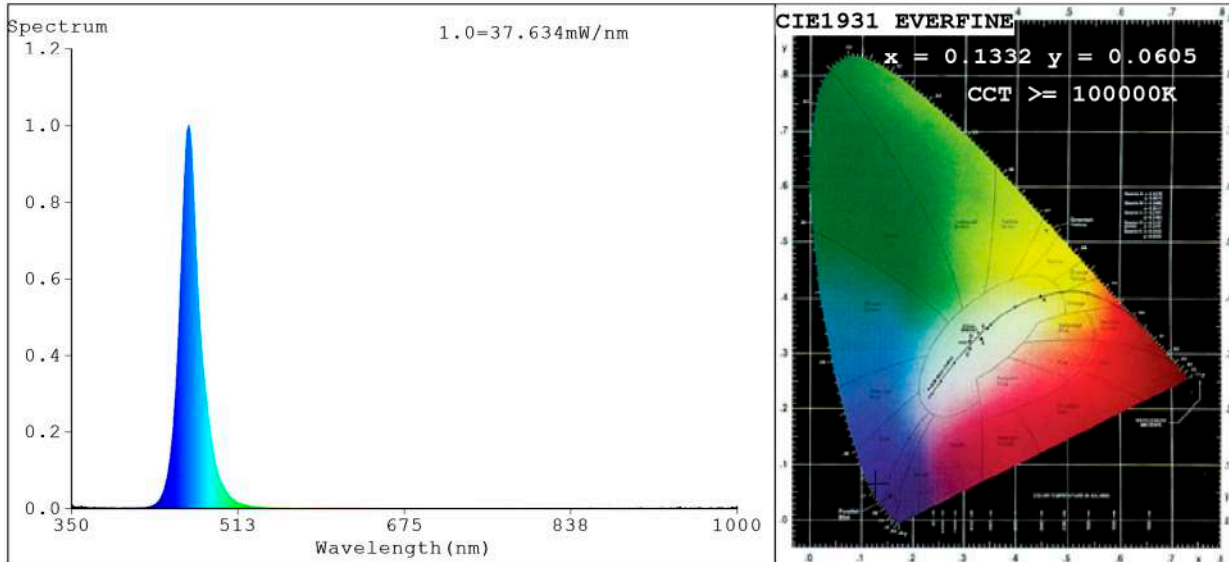
**Electrical parameters:**

V = 11.998 V I = 0.2702 A P = 3.242 W PF = 1.000

Status: Integral T = 1444 ms Ip = 34517 (53%)

Model: Ecoled Jerez verde	Number: 32.028
Tester: Sergio Carneros	Date: 25-5-2021
Temperature: 21Deg	Humidity: 57%
Manufacturer: Luz Negra S.L	Remarks: 100cm de tira flexible

**Spectrum Test Report**



**Color Parameters:**

Chromaticity Coordinate:  $x=0.1332$   $y=0.0605$   $u'=0.1540$   $v'=0.1574$   
 CCT=100000K(Duv=0.1632) Dominant WL:Ld =468.7nm Purity=97.1%  
 Ratio:R=0.3% G=13.8% B=85.9%; Peak WL:Lp=464.5nm FWHM=19.6nm  
 Render Index:Ra=0.3 CRI=0.1 TM30:Rf=0 Rg=-61  
 R1 =0 R2 =0 R3 =0 R4 =0 R5 =2 R6 =0 R7 =0  
 R8 =0 R9 =0 R10=0 R11=0 R12=0 R13=0 R14=0 R15=0

**Photo Parameters:**

Flux = 62.00 lm Eff. : 17.77 lm/W Fe = 917.4 mW Scotopic:993.32 S/P:16.02

**Electrical parameters:**

V = 11.998 V I = 0.2909 A P = 3.490 W PF = 1.000

Status: Integral T = 722 ms Ip = 48041 (73%)

Model:Ecoled Jerez azul  
 Tester:Sergio Carneros  
 Temperature:21Deg  
 Manufacturer:Luz Negra S.L

Number: 32.028  
 Date:25-5-2021  
 Humidity:57%  
 Remarks:100cm de tira flexible