

led profile by Luz Negra

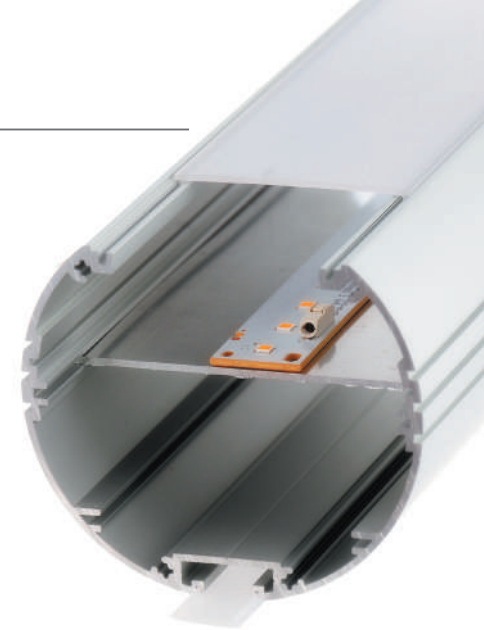
Our PROFESSIONAL led profile series for hanging applications is manufactured in high purity aluminium and silver anodised, and provides Up&Down lighting. Drivers can be housed inside. This profile can be combined with our "easy-ON" frosted white cover, which offers an IP65 to the luminaire, which is extremely useful in areas with high humidity levels. We also have available transparent and frosted microprisma covers which improve glare and UGR levels. Both profile and cover are available in 6 metre lengths which means that long installations can be carried out without any joints.

We offer a 10 year guarantee on the profiles and a 4 year guarantee on the covers.

SICILIA



IP65



Aluminium profile

13.021 anodised silver

6m



Inner plate 200cm

22.055 wide

22.056 narrow



"easy-ON" polycarbonate cover (Down)

18.074 frosted 6m

18.075 transparent microprism 6m

18.076 frosted microprism 6m



Aluminium endcaps

19.106 anodised silver



"easy-ON" polycarbonate cover (Up)

18.001 transparent 2m

18.002 opal 2m

18.003 frosted 2m

18.004 transparent 6m

18.005 opal 6m

18.006 frosted 6m

18.134 frosted 60m



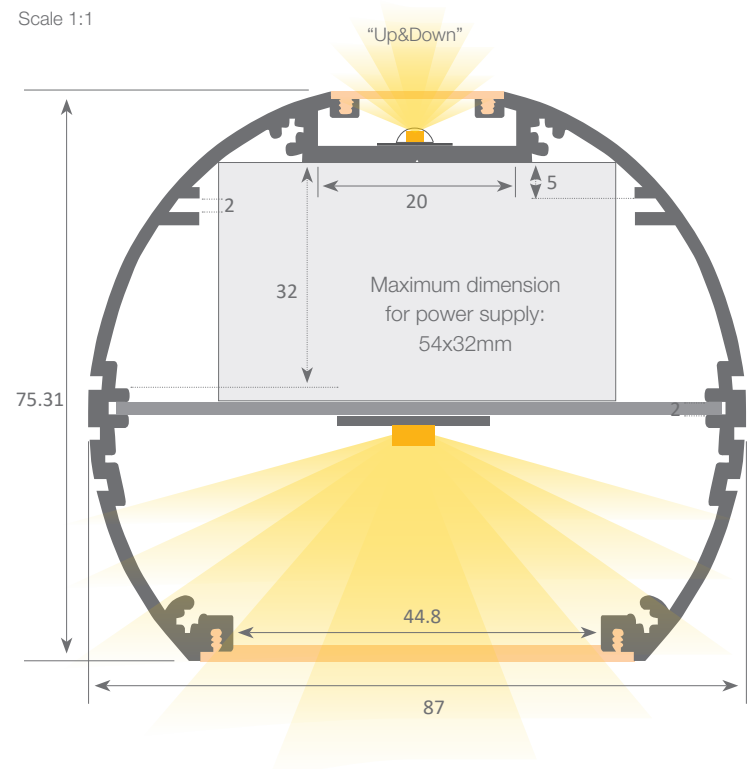
Hanging kit

21.001 chrome set of 2 units

21.002 white set of 2 units

21.003 black set of 2 units

Scale 1:1



Patente Europea
Nº.: 13156605.1

Aluminium alloy extrusion process in accordance with: ISO 9001:2008 - ISO 14001 / Tolerances defined by: UNE-EN 755-9 / UNE-EN 12020-2
Theoretical weight: 1.539Kg / Alloy: 6063 / Perimeter: 627mm / Anodising minimum: 15 microns
Purity aluminium: 95-98% / Treatment: T-5