

KRAKOVIA

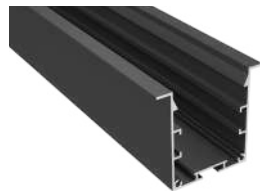
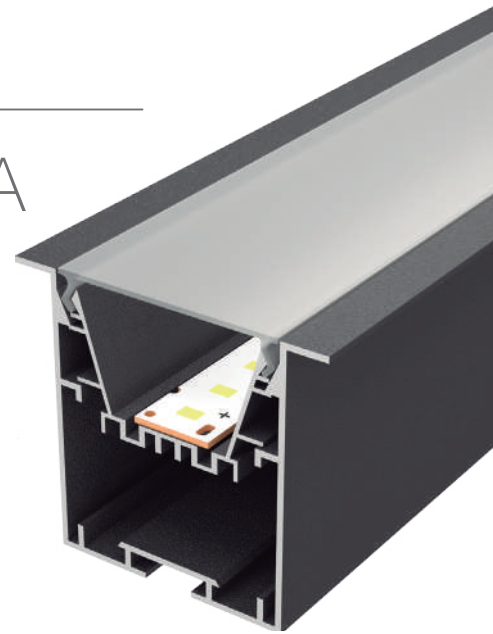
Our PROFESSIONAL led profile series for recessing is manufactured in high purity aluminium and lacquered in textured white and grey. Drivers can be housed inside.

This profile can offer different combinations: for use with our frosted white cover, cover with recessed tray and also with trellis or optic cover.

The internal tray allows us to screw the rigid led strip on one side and enables us to house the power supply on the other. At the same time this tray can be removed from the front which means easy maintenance. For safety measures, we recommend the fixing of a braided cable from the profile base to the dissipation tray.

Both profile and cover are available in 3.4 metre lengths.

We offer a 2 year guarantee on the profiles and cover.



Aluminium profile

14.011	textured grey	3.40m
14.012	textured white	3.40m
14.013	textured black	3.40m



Aluminium tray

16.024	textured white	3.40m
--------	----------------	-------



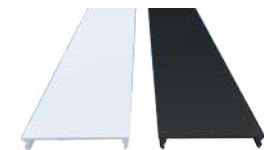
Cover

18.110	frosted	3.40m
18.120	microprism frosted	3.40m



Profile joints

22.219	steel
--------	-------



Blind cover

18.112	white aluminium	3.40m
18.113	black aluminium	3.40m



Fixing bracket

20.047	steel
--------	-------



Aluminium endcaps

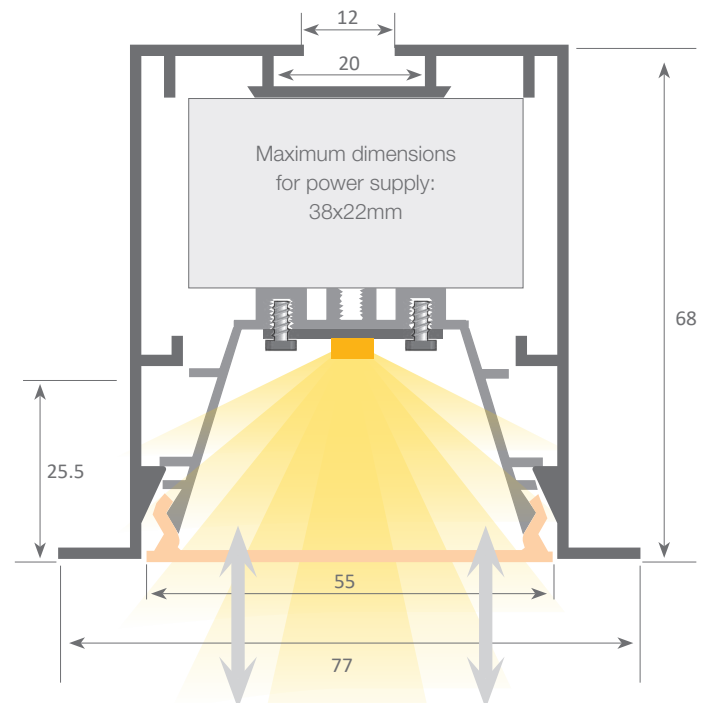
19.201	grey
19.202	white
19.203	black



Safety cable

22.039	steel	18cm
--------	-------	------

Scale 1:1



System with front removable tray which permits easy access to the led strip and power supply, therefore allowing very fast and simple maintenance of the electrical installation.



Aluminium alloy extrusion process in accordance with: ISO 9001:2008 - ISO 14001 / Tolerances: UNE-EN 755-9 / UNE-EN 12020-2
Theoretical weight: 1.202 Kg. / Alloy: 6063 / Perimeter: 562 / Anodizing minimum: 15 microns
Purity aluminium: 95-98% / Treatment: T-5