

Our PROFESSIONAL led profile series for surfaces and ceiling suspension is manufactured in high purity aluminium and available in silver and black anodised. Ideal for wall surfaces, furniture, shelves and similar areas where a width greater than the standard is required. This allows us to use wider led strips for an increased heat dissipation and a wider angle of light emission.

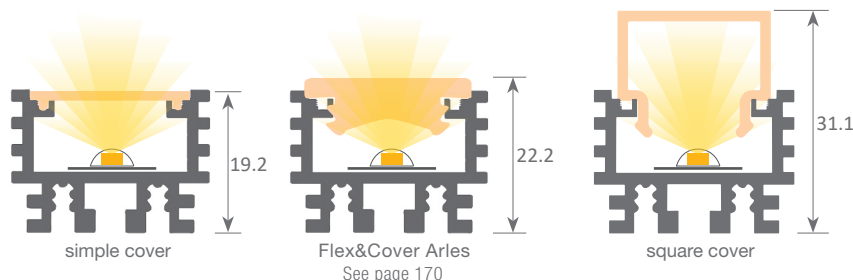
Thanks to its radiator-like design, this profile achieves greater levels of heat dissipation when compared to any other type. By using its lower channels, the manufacturing of square, rectangular or L-shaped hanging luminaires is also possible.

Its cover (available in 8 different finishing) has our "easy-ON" system. Once combined with this profile, it provides an IP65 rating to the luminaire. Hence, it can be used in places with high levels of humidity, such as bathrooms, kitchens, gyms, spas, cold storage chambers, fridges, or others. We recommend using it with our Canovelles-Barcelona-Gomera-COB ecoled strips.

We offer a 10 year guarantee on the profiles and a 4 year guarantee on the covers.

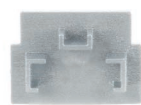
Scale 1:1

By applying the lens cover on the Inferno profile together with the flexible led strip we get a beam of 45° light. The information is just approximate. Please check with our technical department.



Aluminium profile

02.022	anodised silver	2m
02.023	anodised black	2m
02.024	anodised silver	6m
02.025	anodised black	6m



Plastic endcaps

19.037	grey without hole
19.039	black without hole
19.040	black with hole



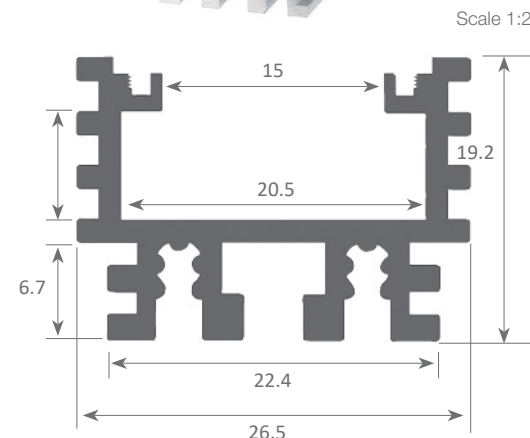
Aluminium endcaps

19.041	anodised silver without hole
19.042	anodised black with hole



Endcaps for square cover

19.043	without hole (white)
19.044	without hole (black)

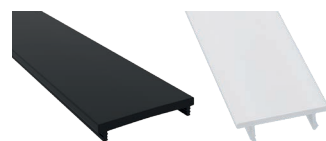


Scale 1:2



Polycarbonate cover "easy-ON"

18.022	transparent	2m
18.023	opal	2m
18.024	frosted	2m
18.025	transparent	6m
18.026	opal	6m
18.027	frosted	6m
18.170	frosted	60m



Black&White cover "easy-ON"

18.028	Black&White	2m
18.029	Black&White	6m

Polycarbonate cover

18.127	frosted	2m
18.126	frosted	6m



Square cover

18.032	frosted	2m
18.102	Black&White	2m
18.033	frosted	6m
18.034	Black&White	6m



Methacrylate UV cover "easy-ON"

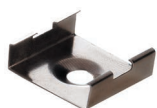
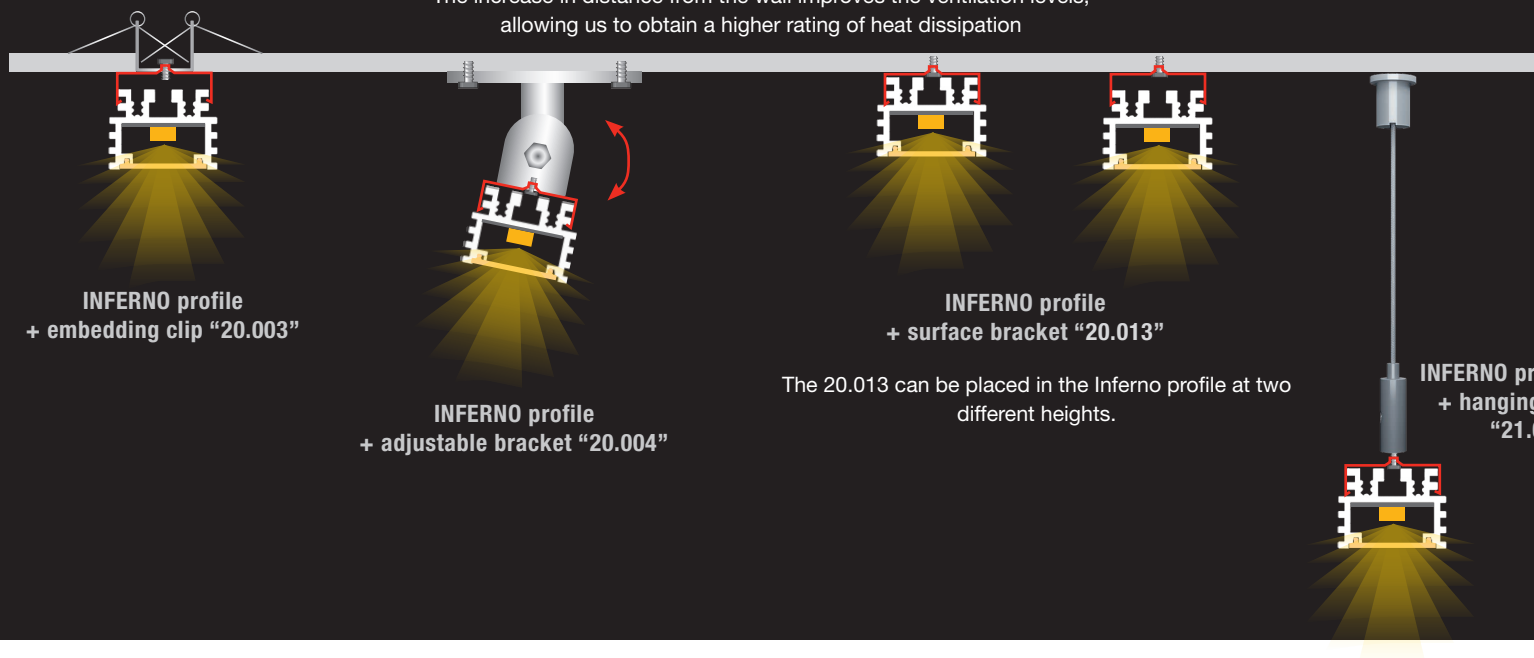
18.181	frosted	2m
18.180	frosted	6m



Patente Europea
Nº.: 13156605.1

Aluminium alloy extrusion process in accordance with: ISO 9001:2008 - ISO 14001 / Tolerances defined by: UNE-EN 755-9 / UNE-EN 12020-2
Theoretical weight: 0.446kg / Alloy: 6063 / Perimeter: 211mm / Anodising minimum: 15 microns
Aluminium purity: 95-98% / Material treatment: T-5 / Covers: Fireproof V0

The increase in distance from the wall improves the ventilation levels, allowing us to obtain a higher rating of heat dissipation



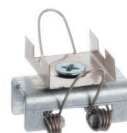
Fixing clip

- 20.012 stainless steel
- 20.013 gunmetal finish in black
- 20.295 lacquered white steel



Adjustable bracket

- 20.004 chrome steel (clip not included)



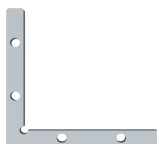
Embedding clip

- 20.003 chrome steel (clip not included)



Hanging KIT

- 21.001 chrome set of 2 units
- 21.002 white set of 2 units
- 21.003 black set of 2 units (clip not included)



90° angle bracket

- 22.003 steel



120° angle bracket

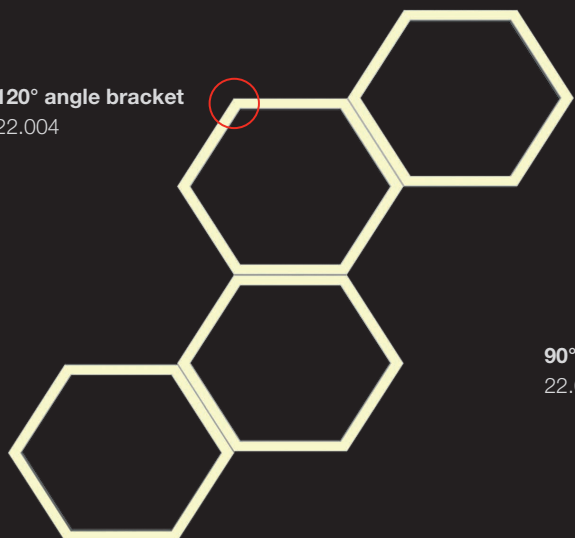
- 22.004 steel



Profile joint

- 22.005 steel

120° angle bracket 22.004



90° angle bracket 22.003

