

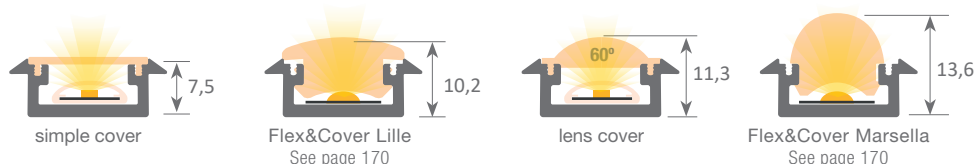
Our PROFESSIONAL led profile series for recessing (only 7.5mm high) is manufactured in high purity aluminium silver, black anodised and textured white lacquered. Ideal for embedding in furniture, shelving and similar areas where we require a minimalist profile with very reduced dimensions.

Its "easy-ON" cover (available in 8 different finishings), when combined with this profile, provides an IP65 rating to the luminaire. Therefore, the profile can be used in places with high levels of humidity, for example bathrooms, kitchens, gyms, spas, cold storage chambers, fridges, and similar.

The profile and its covers are available in lengths of 2 and 6 metres, allowing us to carry out large projects where all the profiles do not have breaks. It is suitable for led strips with a maximum width of 12mm and a power not greater than 15W/m, as there is no ventilation when embedded in wooden surfaces. We recommend using it with our Canovelles-Barcelona-Gomera-COB ecoled strips.

**We offer a 10 year guarantee on the profiles and a 4 year guarantee on the covers.**

Scale 1:1



When applying the lens cover on the Frankfurt profile together with the flexible led strip we get a beam of 60° light.



### Aluminium profile

03.001	anodised silver	2m
03.002	anodised black	2m
03.015	white lacquered*	2m
03.003	anodised silver	6m
03.004	anodised black	6m
03.014	white lacquered*	6m

\* This profile in white lacquered is not compatible with the easy-ON cover.



### Plastic endcaps

19.048	grey without hole
19.049	black without hole
19.463	white without hole

\* Milano's endcaps can also be used



### Plastic endcaps

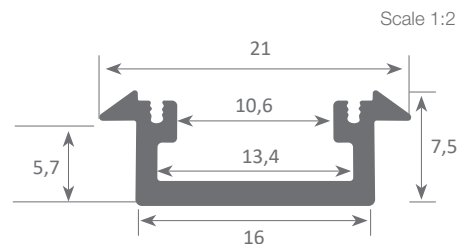
19.050	grey for lens
--------	---------------



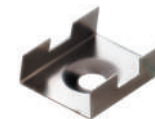
## FRANKFURT



IP65



Scale 1:2



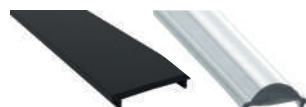
### Clip

20.001	chrome steel
20.002	black oxide finish



### Polycarbonate cover "easy-ON"

18.001	transparent	2m
18.002	opal	2m
18.003	frosted	2m
18.004	transparent	6m
18.005	opal	6m
18.006	frosted	6m
18.134	frosted	60m

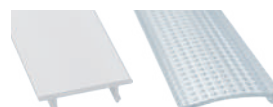


### Black&White cover "easy-ON"

18.007	Black&White	2m
18.008	opaque grey	2m
18.009	Black&White	6m

### Polycarbonate cover "easy-ON"

18.010	lens	2m
18.011	lens	6m



### Polycarbonate cover

18.140	frosted	2m
18.139	frosted	6m

### Polycarbonate cover "easy-ON"

18.136	microprism	2m
18.135	microprism	6m



### 90° angle bracket

22.001	steel (52x13mm)
--------	-----------------



### Methacrylate UV cover "easy-ON"

18.179	glacé	2m
18.178	glacé	6m



Patente Europea  
Nº.: 13156605.1

Aluminium alloy extrusion process in accordance with: ISO 9001:2008 - ISO 14001 / Tolerances defined by: UNE-EN 755-9 / UNE-EN 12020-2  
Theoretical weight: 0.138kg / Alloy: 6063 / Perimeter: 77mm / Anodising minimum: 15 microns  
Aluminium purity: 95-98% / Material treatment: T-5 / Covers: Fireproof V0