

Our PROFESSIONAL led profile series, manufactured in black anodised is intended for achieving illuminated joints on carpets, parquet floor or similar. Suitable for illuminating parquet floors, stairs, carpets or others.

This profile and its covers are available in lengths of 3 metres and allow to house led strips with a maximum PCB width of 10mm.

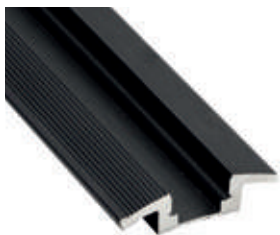
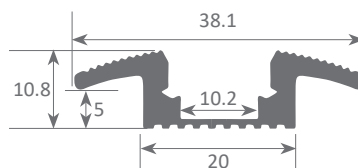
We recommend combining this profile with ecoled Canovelles to obtain a dot free effect.

We offer a 2 year guarantee on our profiles and covers.

DUBAI

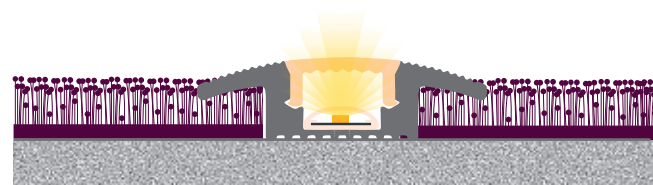


Scale 1:1



Aluminium profile

07.017	anodised black	2m
07.009	anodised black	3m



Dubái profile used on carpet



Polycarbonate cover

18.160	frosted	2m
18.055	frosted	3m



Endcaps

19.125	anodised black
--------	----------------



Dubái profile used on parquet



Aluminium alloy extrusion process in accordance with: ISO 9001:2008 - ISO 14001 / Tolerances defined by: UNE-EN 755-9 / UNE-EN 12020-2
Theoretical weight: 1,025 kg / Alloy: 6060 / Anodising minimum: 15 microns
Aluminium purity: 95-98% / Material treatment: T-5 / Covers: Fireproof V0