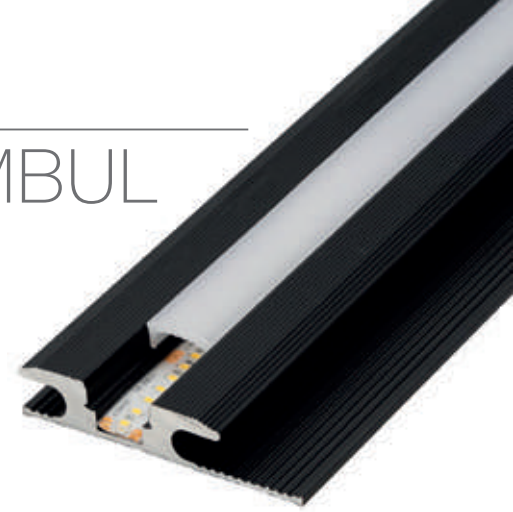


Our PROFESSIONAL led profile series, treadable and for indoor use, is intended for achieving illuminated joints on carpets, parquet floor or similar. It is manufactured in high purity aluminium and available in anodised black.

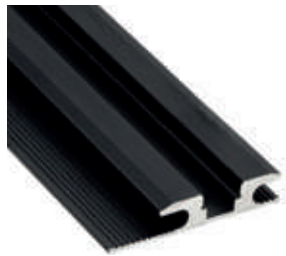
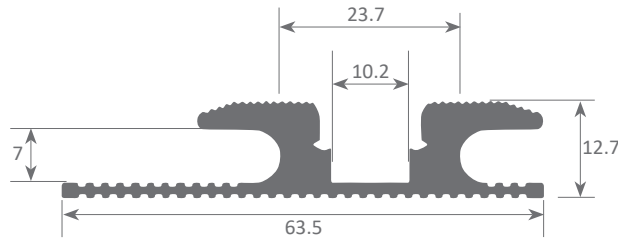
This profile and its covers are available in lengths of 3 metres and allow you to house led strips with a maximum PCB width of 10mm.

We recommend combining this profile with ecoled Canovelles to obtain a dot free effect.

We offer a 2 year guarantee on our profiles and covers.

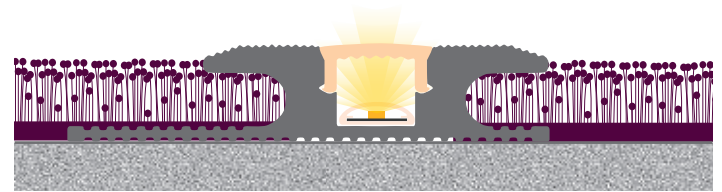


Scale 1:1



Aluminium profile

07.020	anodised black	2m
07.008	anodised black	3m



Estambul profile used on carpet



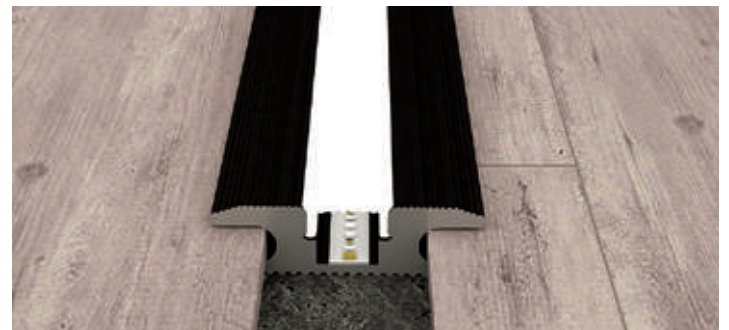
Polycarbonate cover

18.160	frosted	2m
18.055	frosted	3m



Endcaps

19.124	anodised black
--------	----------------



Estambul profile used on parquet



Aluminium alloy extrusion process in accordance with: ISO 9001:2008 - ISO 14001 / Tolerances defined by: UNE-EN 755-9 / UNE-EN 12020-2
Theoretical weight: 2,2 kg / Alloy: 6060 / Anodising minimum: 15 microns
Aluminium purity: 95-98% / Material treatment: T-5 / Covers: Fireproof V0