

led profiles for stairs and skirting boards



AZORES

106



DUBLIN

107



DUBLIN XL

108



EDIMBURGO

110



LONDRES

111



FLORENCIA

112



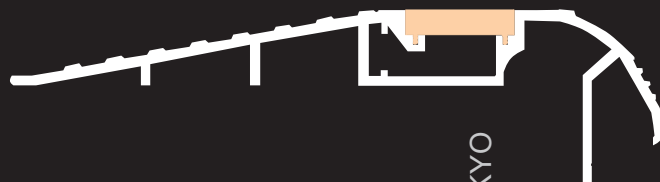
NIZA ECO

114



NIZA DUO

115



TOKYO

116



ESTAMBUL

118



DUBAI

119



QATAR

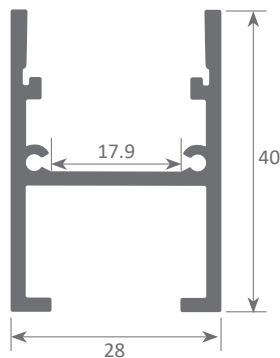
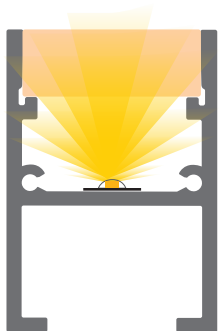
120

Our PROFESSIONAL led profile series, treadable for indoor and outdoor use, is manufactured in high purity aluminium and available in anodised silver. Suitable for illuminating stairs and floors, such as gardens, bathrooms, corridors, balconies, and others.

This profile and its covers are available in lengths of 2 metres, allowing us to carry out large projects where all the profiles do not need joints. Suitable for led strips with a maximum width of 17mm and a power not greater than 40W/m. In order to avoid system malfunctions and potential failures, we recommend combining this profile with our Canovelles-Vizcaya ecoled strips or similar products with our DUO waterproof system. When installed under conditions of high humidity, we suggest filling it with Epoxy resin in order to achieve an IP67 rating (a 2mm thick layer on top of the led strip).

**We offer a 2 year guarantee.**

Scale 1:1



**Aluminium profile**

07.010 anodised silver 2m



**Endcaps**

19.224 without hole



**Polycarbonate cover**

18.084 opal 2m



**Epoxy Resin**

22.018 1 Kg  
+ 1 catalyst of 400g



Patente Europea  
Nº.: 13156605.1

Aluminium alloy extrusion process in accordance with: ISO 9001:2008 - ISO 14001 / Tolerances defined by: UNE-EN 755-9 / UNE-EN 12020-2  
Alloy: 6063 / Anodising minimum: 15 microns  
Aluminium purity: 95-98% / Material treatment: T-5 / Covers: Fireproof V0

Our PROFESSIONAL led profile series, treadable and for indoor use is manufactured in high purity aluminium and available in anodised silver. Suitable for a wide range of floor lighting, such as stairs, bathrooms, theatres and similar.

By combining its "easy-ON" cover with this profile, we provide an IP65 protection to the luminaire. Therefore, the profile can be used in places with high levels of humidity, while also being highly endurable to treading.

This profile and its covers are available in lengths of 2 and 6 metres, allowing us to carry out large projects where all the profiles do not need joints. Suitable for led strips with a maximum width of 11mm and a power not greater than 20W/m. In order to avoid system malfunctions and potential failures, we recommend combining this profile with our Canovelles-Vizcaya ecoled strips or similar products with our DUO waterproof system.

When installed under conditions of high humidity, we highly suggest filling it with the resin in order to achieve an IP68 rating.

**We offer a 10 year guarantee on the profiles and a 4 year guarantee on the covers.**

## DUBLIN



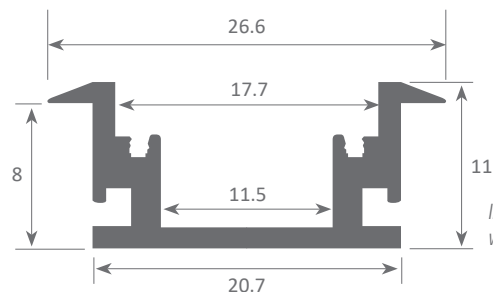
IP65



Scale 1:1



Scale 1:2



*In order to be able to waterproof approx 12 metres of DUBLIN led profile we would need these quantities of both resin and catalyst.*



### Aluminium profile

07.001	anodised silver	2m
07.002	anodised silver	6m



### Endcaps

19.116	aluminium
--------	-----------



### Polycarbonate cover IK10

18.012	frosted	2m
18.013	frosted	6m



### Epoxy Resin

22.018	1 Kg
	+ 1 catalyst of 400g



Patente Europea  
Nº.: 13156605.1

Aluminium alloy extrusion process in accordance with: ISO 9001:2008 - ISO 14001 / Tolerances defined by: UNE-EN 755-9 / UNE-EN 12020-2  
Theoretical weight: 0.233 kg / Alloy: 6063 / Perimeter: 111 mm / Anodising minimum: 15 microns  
Aluminium purity: 95-98% / Material treatment: T-5 / Covers: Fireproof V0

Our PROFESSIONAL led profile series, treadable for indoor and outdoor use, is manufactured in high purity aluminium and available in anodised silver. Suitable for illuminating stairs and floors, such as gardens, bathrooms, corridors, balconies, and others.

Its "easy-ON" cover, when combined with this profile, provides an IP65 rating. Therefore, it can be used in places with high levels of humidity, while also being highly resistant to treading.

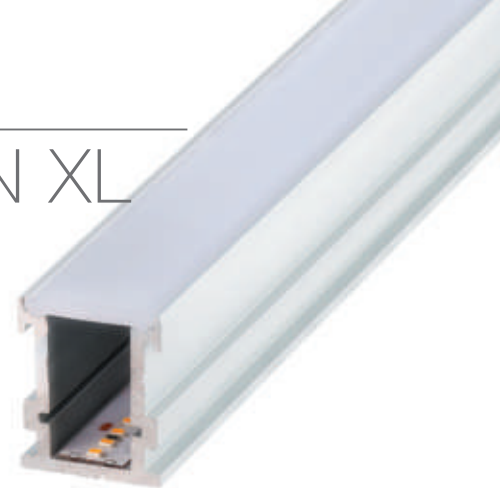
This profile and its covers are available in lengths of 3 metres, allowing us to carry out large projects where all the profiles do not need joints. Suitable for led strips with a maximum width of 12mm and a power not greater than 30W/m. In order to avoid system malfunctions and potential failures, we recommend combining this profile with our Canovelles-Vizcaya ecoled strips or similar products with our DUO waterproof system. When installed under conditions of high humidity, we suggest filling it with epoxy resin in order to achieve an IP67 rating (a 2mm thick layer on top of the led strip).

**We offer a 10 year guarantee on the profiles and a 4 year guarantee on the covers.**

## DUBLIN XL

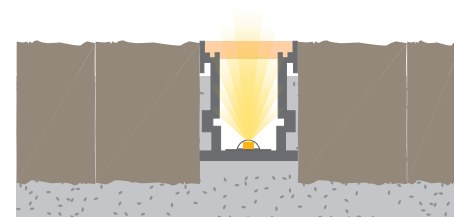
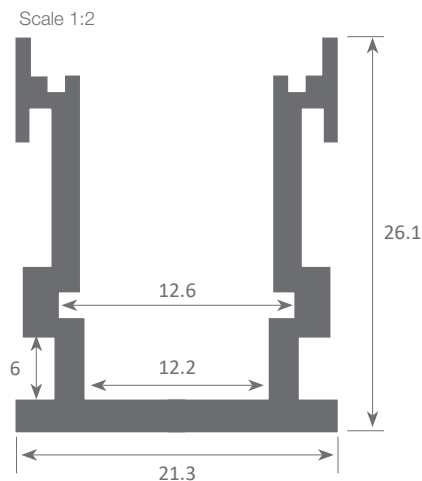
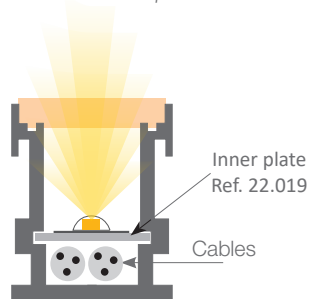


IP65



Scale 1:1

*In order to be able to waterproof approx 8-10 metres of DUBLIN XL led profile we would need these quantities of both resin and catalyst.*



### Aluminium profile

07.003 anodised silver 3m



### Plastic endcaps

19.117 with hole  
19.118 without hole



### Polycarbonate cover IK10

18.053 opal 3m



### Inner plate

22.019 aluminium 2m  
(2000x14x0.75 mm)



### Epoxy resin

22.018 1 Kg  
+ 1 catalyst of 400g



Patente Europea  
Nº.: 13156605.1

Aluminium alloy extrusion process in accordance with: ISO 9001:2008 - ISO 14001 / Tolerances defined by: UNE-EN 755-9 / UNE-EN 12020-2  
Theoretical weight: 0.480 kg / Alloy: 6063 / Perimeter: 176,4 mm / Anodising minimum: 15 microns  
Aluminium purity: 95-98% / Material treatment: T-5 / Covers: Fireproof V0



Our PROFESSIONAL led profile series is for skirting boards, lighting up aisles or corridors and white lacquered aluminium. This profile and its cover are both available in lengths of 2m and can house led strips with a maximum PCB of 13mm width and a power not greater than 20W/m.

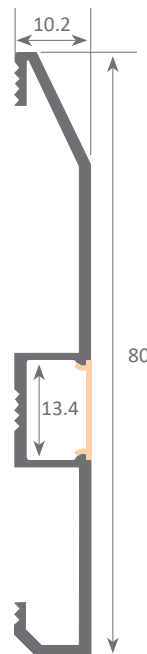
We recommend combining it with COB our Granada ecoled strip to obtain a more homogeneous illumination.

It is fixed to the wall with conventional silicone.

**We offer a 2 year guarantee on profiles and covers.**

## EDIMBURGO

Scale 1:1



### Aluminium profile

06.008 white lacquered 2m  
(matt)



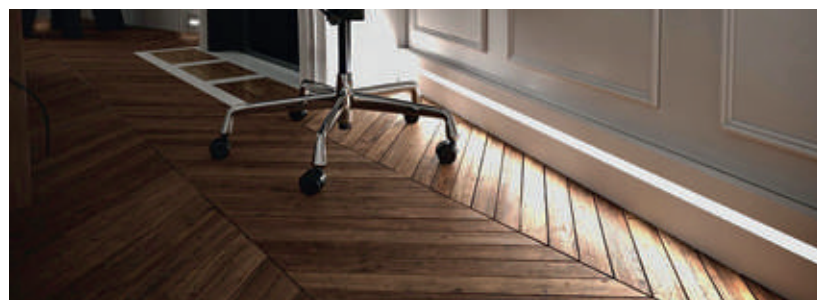
### Polycarbonate cover

18.052 opal 2m



### Plastic endcaps

19.114 white without hole set of 2 units



Aluminium alloy extrusion process in accordance with: ISO 9001:2008 - ISO 14001 / Tolerances defined by: UNE-EN 755-9 / UNE-EN 12020-2  
Alloy: 6060 / Anodising minimum: 15 microns  
Aluminium purity: 95-98% / Material treatment: T-5 / Covers: methacrylate (greater protection against UV rays)

Our PROFESSIONAL led profile series is for skirting boards, lighting up aisles or corridors and white lacquered aluminium. This profile and its cover are both available in lengths of 2m and can house led strips with a maximum PCB of 13mm width.

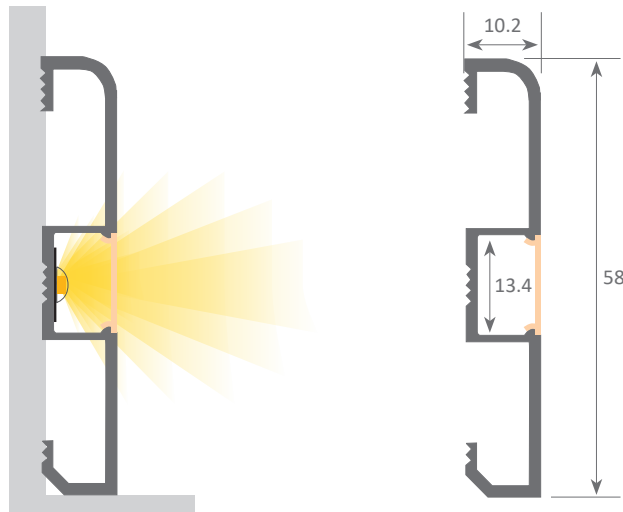
We recommend combining it with COB our Canovelles ecoled strip to obtain a more homogeneous illumination.

It is fixed to the wall with conventional silicone.

**We offer a 2 year guarantee on profiles and covers.**

## LONDRES

Scale 1:1



### Aluminium profile

06.009 white lacquered 2m (matt)



### Polycarbonate cover

18.052 opal 2m



### Plastic endcaps

19.115 white without hole set of 2 units



Aluminium alloy extrusion process in accordance with: ISO 9001:2008 - ISO 14001 / Tolerances defined by: UNE-EN 755-9 / UNE-EN 12020-2  
Alloy: 6060 / Anodising minimum: 15 microns  
Aluminium purity: 95-98% / Material treatment: T-5 / Covers: methacrylate (greater protection against UV rays)

Our PROFESSIONAL led profile series, treadable and for indoor use, is manufactured in high purity aluminium and available in anodised silver. Suitable for illuminating floors and stairs, bathrooms, corridors, theatres, or similar.

Its "easy-ON" cover, when combined with this profile, provides an IP65 rating. Therefore, the profile can be used in places with high levels of humidity, while also being highly durable to treading. Its double side channels allow us to house all types of cabling (circuit closure wires for avoiding tension drops, telephone cables, etc).

Combined with our rigid led strips, it can be used as an ultra thin surface luminaire for ceilings.

This profile and its covers are available in lengths of 2 and 6 metres, allowing us to carry out large projects where all the profiles do not need joints. Suitable for led strips with a maximum width of 21mm and a power not greater than 40W/m. In order to avoid system malfunctions and potential failures, We recommend combining it with Canovelles our Vizcaya ecoled strip or similar products with our DUO waterproof system.

When installed under conditions of high humidity, we strongly recommend filling the profile with the resin in order to achieve an IP68.

**We offer a 10 year guarantee on the profiles and a 4 year guarantee on the covers.**

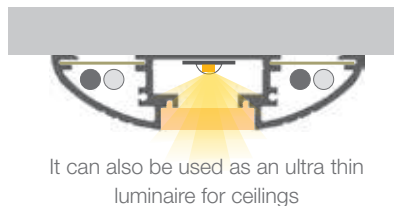
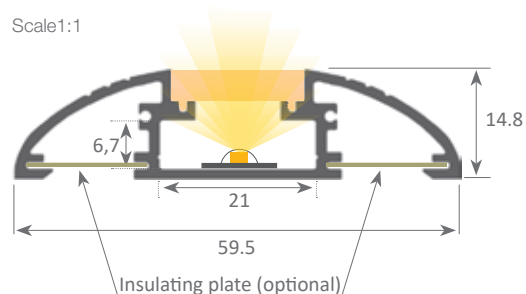
## FLORENCIA



IP65



Scale 1:1



### Aluminium profile

07.004	anodised silver	2m
07.005	anodised silver	6m



### Endcaps

19.119	silver aluminium without hole
19.120	grey plastic without hole
19.121	grey plastic with hole



### Epoxy resin

22.018	1 Kg
	+ 1 catalyst of 400g



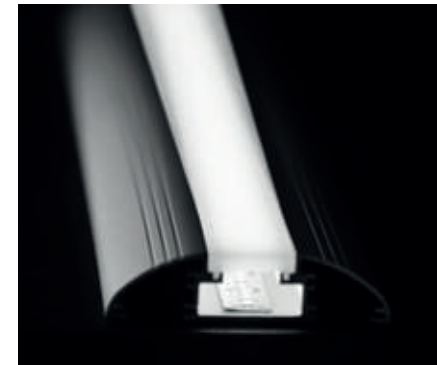
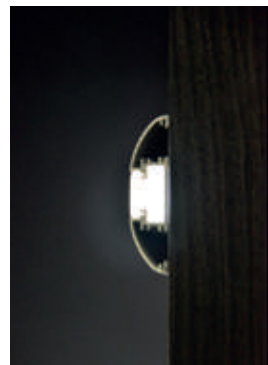
### Polycarbonate cover IK10

18.012	frosted	2m
18.013	frosted	6m



### Inferior insulating plate

22.020	aluminium	2m
--------	-----------	----



Patente Europea  
Nº.: 13156605.1

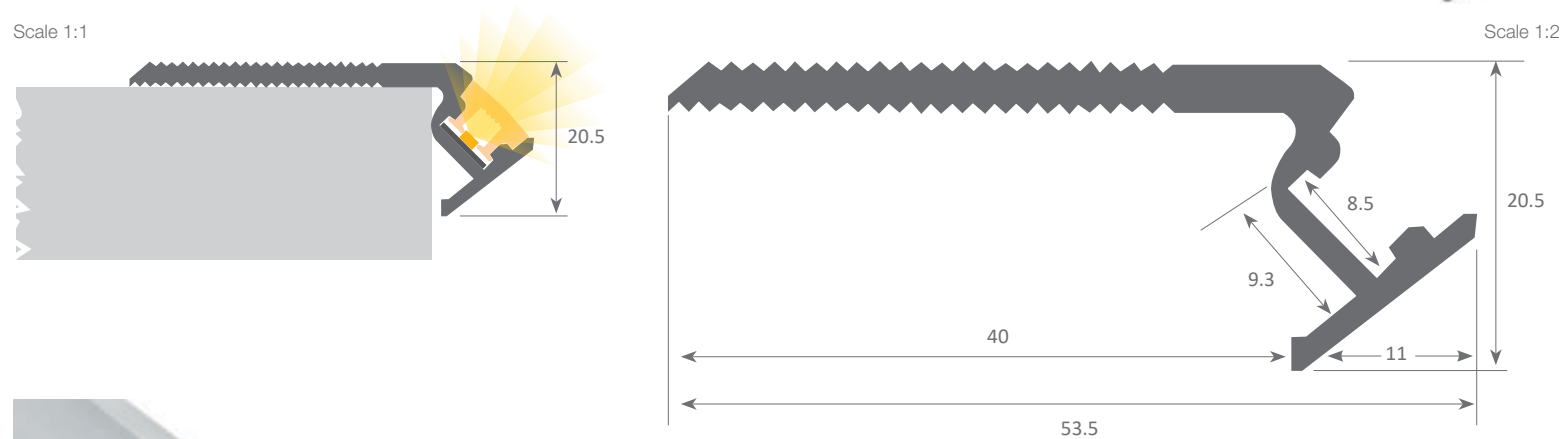
Aluminium alloy extrusion process in accordance with: ISO 9001:2008 - ISO 14001 / Tolerances defined by: UNE-EN 755-9 / UNE-EN 12020-2  
Alloy: 6063 / Anodising minimum: 15 microns  
Aluminium purity: 95-98% / Material treatment: T-5 / Covers: Fireproof V0



Our BASIC led profile series, suitable for stair lighting is manufactured in high purity aluminium and available in anodised silver (on demand, we can supply anodised black or other coloured finishings). Its rubber cover, combined with this profile, provides an IP20 rating while at the same time offering a more homogeneous illumination. Although this is an option with reduced dimensions, it is at the same time an economical solution. We recommend using it with our Cies ecoled strips.

**We offer a 2 year guarantee on our profiles and covers.**

## NIZA ECO



### Aluminium profile

06.001 anodised silver 2.40m



### Plastic endcaps

19.109 grey set of 2 units



### Cover

18.045 opal 2.40m



Aluminium alloy extrusion process in accordance with: ISO 9001:2008 - ISO 14001 / Tolerances defined by: UNE-EN 755-9 / UNE-EN 12020-2  
Alloy: 6063 / Anodising minimum: 15 microns  
Aluminium purity: 95-98% / Material treatment: T-5 / Covers: Fireproof V0

# led profile by Luz Negra

Our BASIC led profile series, suitable for stair lighting is manufactured in high purity aluminium and available in black anodised (on demand can be supplied with silver anodised or other coloured finishings).

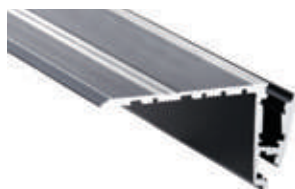
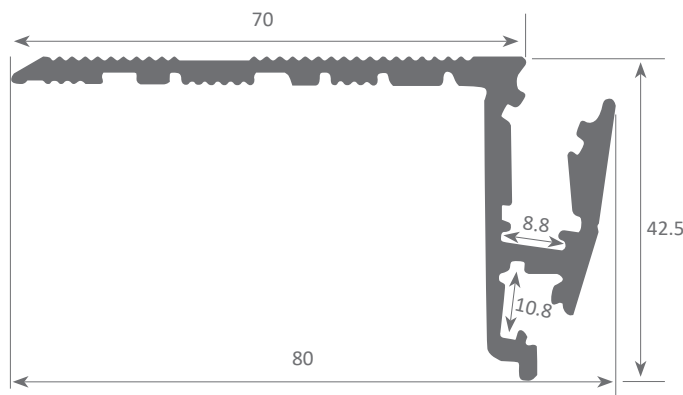
Its rubber cover, when combined with this profile, provides an IP20 while also offering a more homogeneous illumination. Also, its design allows us to achieve upward as well as downward light emissions, which is also interesting for lighting up the lower part of the step.

This profile and its cover are available in lengths of 2.40 metres. We recommend using it with our Cies ecoled strips (with PCB not wider than 8mm and IP20).

**We offer a 2 year guarantee on our profiles and covers.**

## NIZA DUO

Scale 1:1



**Aluminium profile**

06.002 anodised black 2.40m



**Upper cover**

18.046 white 2.40m



**Endcaps**

19.110 black aluminium set of 2 units



**Indicator with drawings**

22.016



**Lower cover**

18.047 white 2.40m



**(on request)**

18.048	red	2.40m
18.049	blue	2.40m
18.050	yellow	2.40m
18.051	pink	2.40m



**Indicator with numbers**

22.015



Aluminium alloy extrusion process in accordance with: ISO 9001:2008 - ISO 14001 / Tolerances defined by: UNE-EN 755-9 / UNE-EN 12020-2  
Alloy: 6063 / Anodising minimum: 15 microns  
Aluminium purity: 95-98% / Material treatment: T-5 / Covers: Fireproof V0

Our PROFESSIONAL led profile series, treadable and for indoor use is manufactured in high purity aluminium and available in anodised silver and black.

Its "easy-ON" cover, when combined with this profile, provides an IP65 rating. Therefore, the profile can be used in places with high levels of humidity, while also being highly durable to treading. Front lighting is achieved by placing a led strip with a maximum width of 14mm under the cover. Additionally, by means of a metal plate, we can obtain side lighting, thus ensuring a perfect dot free light emission. The step's lower area can also be illuminated by using a second led strip.

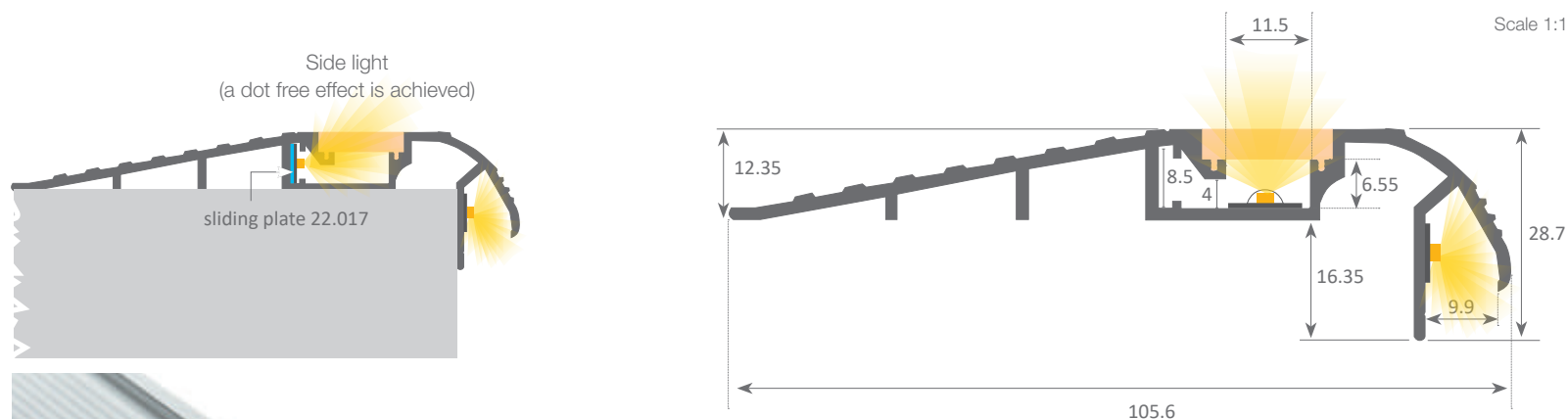
This profile and its cover are both available in lengths of 2 and 6 metres, allowing us to carry out large projects where all the profiles do not need joints. In order to avoid system malfunctions and potential failures, we recommend combining the profile with our Canovelles-Vizcaya led strips or similar products with our DUO waterproof system. For side lighting, we use a metal plate and we recommend the use of our Granada-Cies-Alicante or Avila ecoled strips with this profile.

**We offer a 10 year guarantee on the profiles and a 4 year guarantee on the covers.**

## TOKYO



IP65



### Aluminium profile

06.003	anodised silver	2m
06.004	anodised black	2m
06.005	anodised silver	6m
06.006	anodised black	6m



### Polycarbonate cover IK10

18.012	frosted	2m
18.013	frosted	6m



### Plastic endcaps

19.111	grey	set of 2 units
19.112	black	set of 2 units




### Inner plate

22.017	aluminium	2m
--------	-----------	----



Patente Europea  
Nº.: 13156605.1

Aluminium alloy extrusion process in accordance with: ISO 9001:2008 - ISO 14001 / Tolerances defined by: UNE-EN 755-9 / UNE-EN 12020-2  
Theoretical weight: 0.813 kg / Alloy: 6063 / Perimeter: 384 mm / Anodising minimum: 15 microns  
Aluminium purity: 95-98% / Material treatment: T-5 / Covers: Fireproof V0

A man with a mustache, wearing a grey sweater and dark trousers, sits on a wide staircase. The staircase has alternating red and white steps, creating a strong visual rhythm. The walls on either side are made of perforated brick, and the overall lighting is warm and dramatic, with the steps glowing from within.

Project carried out by the  
architect Juan Carlos Roure  
with the collaboration of  
Lumen's Boulevard.

Our PROFESSIONAL led profile series, treadable and for indoor use, is intended for achieving illuminated joints on carpets, parquet floor or similar. It is manufactured in high purity aluminium and available in anodised black.

This profile and its covers are available in lengths of 3 metres and allow you to house led strips with a maximum PCB width of 10mm.

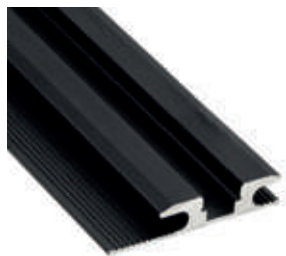
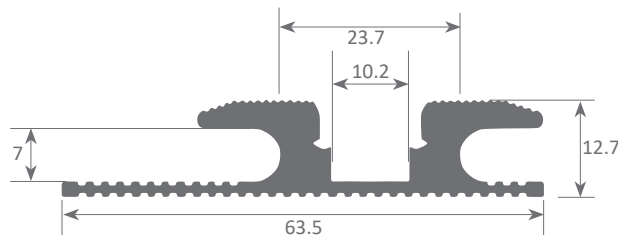
We recommend combining this profile with ecoled Canovelles to obtain a dot free effect.

**We offer a 2 year guarantee on our profiles and covers.**

## ESTAMBUL

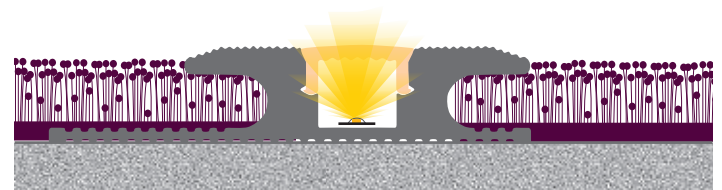


Scale 1:1



**Aluminium profile**

07.008 anodised black 3m



Estambul profile used on carpet



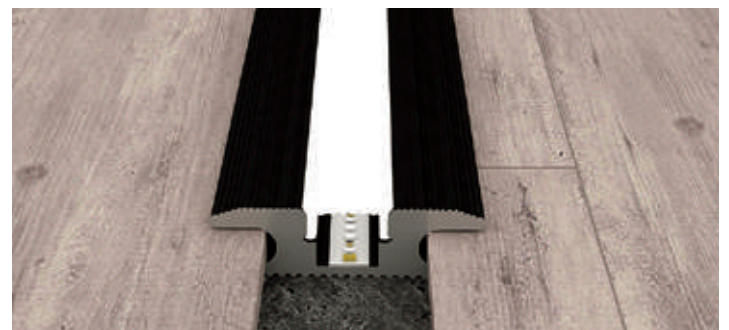
**Polycarbonate cover**

18.055 frosted 3m



**Endcaps**

19.124 anodised black



Estambul profile used on parquet



Aluminium alloy extrusion process in accordance with: ISO 9001:2008 - ISO 14001 / Tolerances defined by: UNE-EN 755-9 / UNE-EN 12020-2  
Theoretical weight: 2,2 kg / Alloy: 6060 / Anodising minimum: 15 microns  
Aluminium purity: 95-98% / Material treatment: T-5 / Covers: Fireproof VØ

Our PROFESSIONAL led profile series, manufactured in black anodised is intended for achieving illuminated joints on carpets, parquet floor or similar. Suitable for illuminating parquet floors, stairs, carpets or others.

This profile and its covers are available in lengths of 3 metres and allow to house led strips with a maximum PCB width of 10mm.

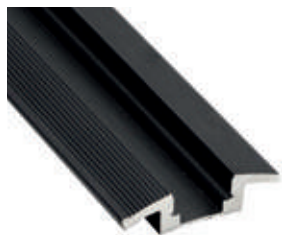
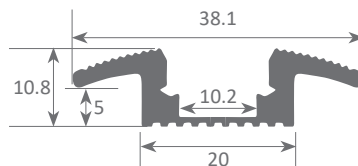
We recommend combining this profile with ecoled Canovelles to obtain a dot free effect.

**We offer a 2 year guarantee on our profiles and covers.**

## DUBAI

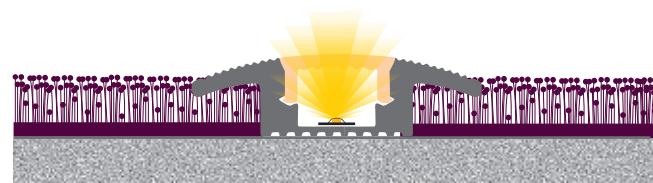


Scale 1:1



### Aluminium profile

07.009 anodised black 3m



Dubái profile used on carpet



### Polycarbonate cover

18.055 frosted 3m



### Endcaps

19.125 anodised black



Dubái profile used on parquet



Aluminium alloy extrusion process in accordance with: ISO 9001:2008 - ISO 14001 / Tolerances defined by: UNE-EN 755-9 / UNE-EN 12020-2  
Theoretical weight: 1,025 kg / Alloy: 6060 / Anodising minimum: 15 microns  
Aluminium purity: 95-98% / Material treatment: T-5 / Covers: Fireproof V0

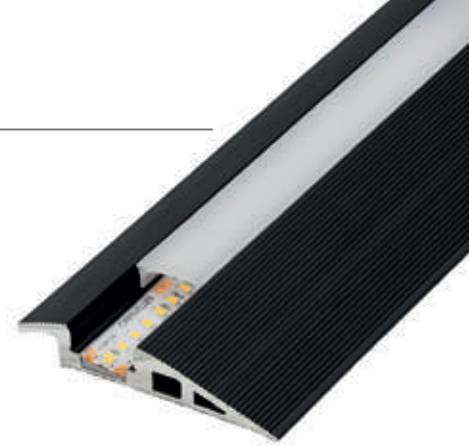
Our PROFESSIONAL led profile series, treadable and for indoor use, is manufactured in high purity aluminium and available in anodised black. It is intended for lateral side lighting, and suitable for illuminating floors and stairs, or others.

This profile and its covers are available in lengths of 3 metres and allow you to house led strips with a maximum PCB width of 10mm.

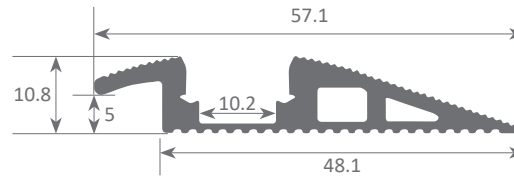
We recommend combining this profile with ecoled Canovelles to obtain a dot free effect.

**We offer a 2 year guarantee on our profiles and covers.**

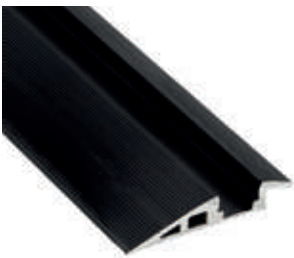
## QATAR



Scale 1:1

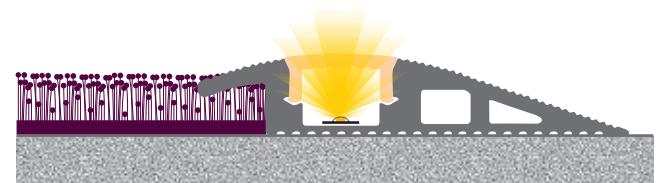


Scale 1:2



### Aluminium profile

07.007	anodised black	3m
07.012	anodised silver	3m



Qatar profile used on carpet



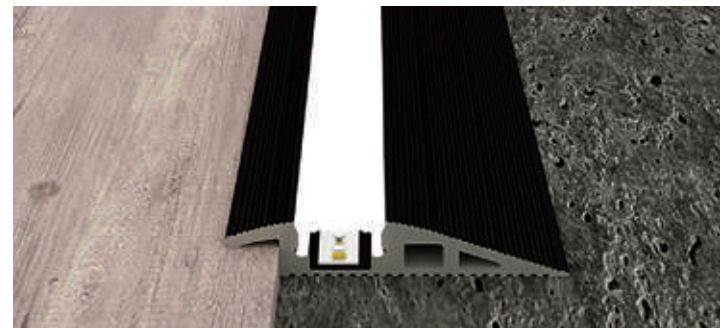
### Polycarbonate cover

18.055	frosted	3m
--------	---------	----



### Endcaps

19.123	anodised black
--------	----------------



Qatar profile used on parquet



Aluminium alloy extrusion process in accordance with: ISO 9001:2008 - ISO 14001 / Tolerances defined by: UNE-EN 755-9 / UNE-EN 12020-2  
Theoretical weight: 1,5 kg / Alloy: 6060 / Anodising minimum: 15 microns  
Aluminium purity: 95-98% / Material treatment: T-5 / Covers: Fireproof V0

nk PORCELANOSA Grupo

nk brassware