

MILANO GHOST PROFILE

High quality silicone opal profile, manufactured with a 230V led strip inside. It allows us to illuminate cavities and cornises etc. and offers up to 50 metre without luminosity drops. It has 2 side grooves which means we can screw or nail the profile onto the desired surface. Aluminium is not required for heat dissipation and it can work for 24h non stop. It can be cut every 10cm, consumption 14W/m, offering 1500 Lm/W. It can be regulated with triac dimmer.

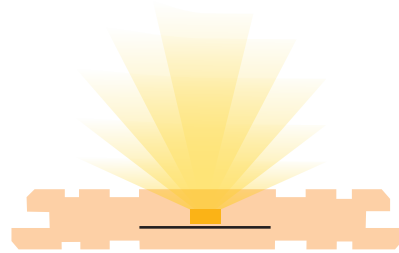
Thanks to its screwable connection kit, welding is not necessary. Its waterproofing of IP67 and UV protection turn it into an ideal product for outdoor use and also humid zones (it is extremely necessary to completely seal the connector and end cap with the recommended silicone).

Supplied in 100m rolls, or cut to requested length (MOQ 1m).

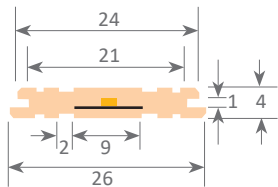
We offer a 2 year guarantee which can be extended to 3 years if the requested connections are carried out by Luz Negra. Spanish design and patent.



Scale 1:2



Scale 1:1



Power (W)	14W/m
Voltage (V)	230V
Light emission	120°
Waterproofing	IP67
N° leds/m	140
Cutable	every 100mm
Working temperature	-20°C / +40°C
Apt for	exclusively for outdoor use
Packaging	by metre
Guarantee	3 years



Ghost profile Milano

34.005	white	6000°K	14W/m	1500 Lm
34.006	white	4000°K	14W/m	1450 Lm
34.007	white	3000°K	14W/m	1400 Lm



Connector IP65

42.005	connector with cable of 100cm
42.004	kit (connector with cable of 10cm, closing endcap, cap with connector neck, screws and silicone)



Connector IP20

42.007	connector (without cable), suitable for screwing with cables
--------	--



Cap with connector neck

19.251	transparent silicone
--------	----------------------



Closure endcaps

19.181	transparent silicone
--------	----------------------

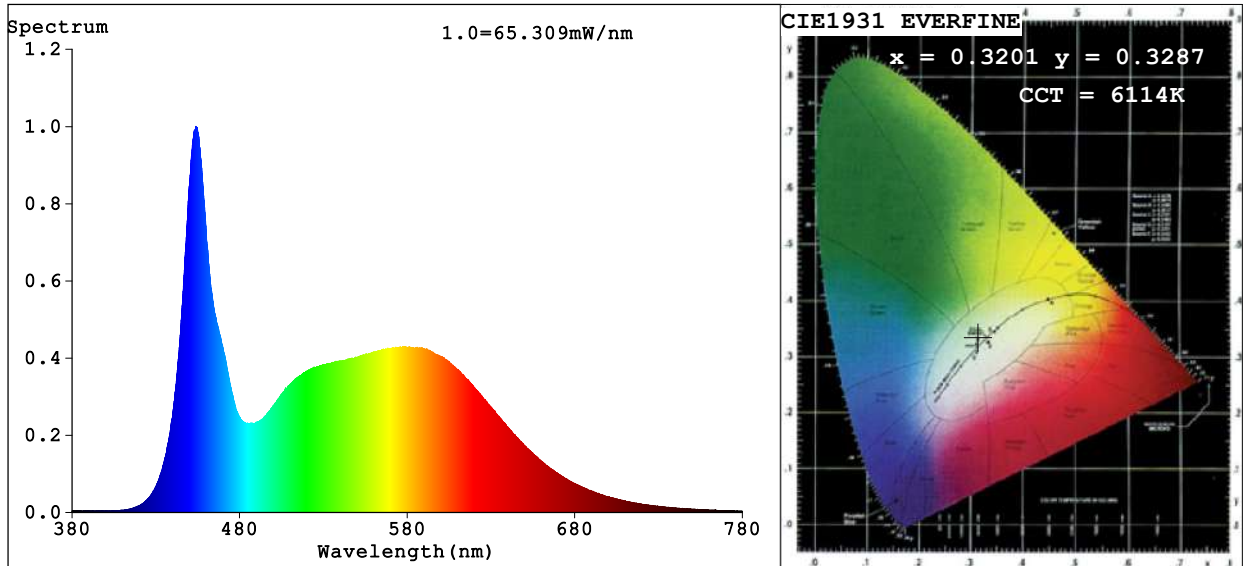


Silicone for waterproofing

22.138	opal	45ml
22.140	transparente	45ml



Spectrum Test Report



Color Parameters:

Chromaticity Coordinate: $x=0.3201$ $y=0.3287$ / $u'=0.2031$ $v'=0.4693$
 CCT=6114K (Duv=-0.0006) Dominant WL:Ld =487.1nm Purity=4.8%
 Ratio:R=14.5% G=79.5% B=5.9%; Peak WL:Lp=453.9nm FWHM=20.8nm
 Render Index:Ra=85.4 CRI=79.2 TM30:Rf=81 Rg=94 Lav=542.2nm
 R1 =85 R2 =93 R3 =94 R4 =83 R5 =85 R6 =86 R7 =87
 R8 =71 R9 =18 R10=81 R11=83 R12=59 R13=88 R14=97 R15=81

Photo Parameters:

Flux = 1801 lm Eff. : 126.13 lm/W Fe = 5.839 W Scotopic:4019.8 S/P:2.2317

Electrical parameters:

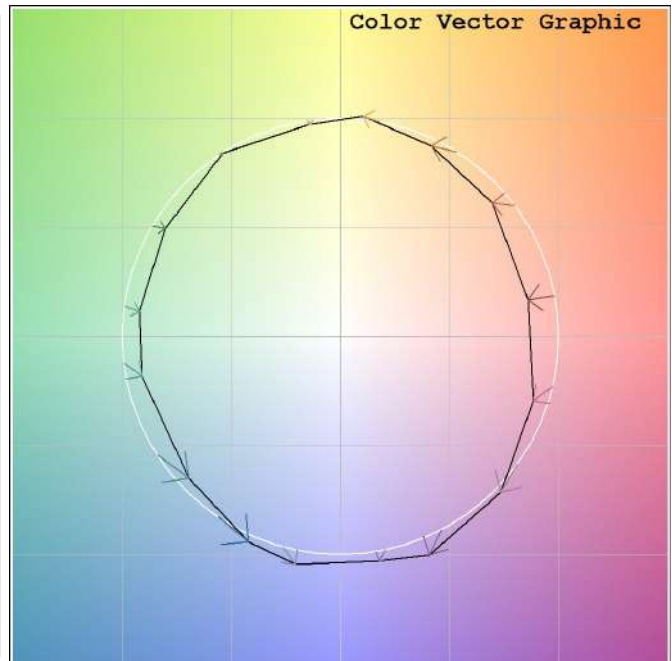
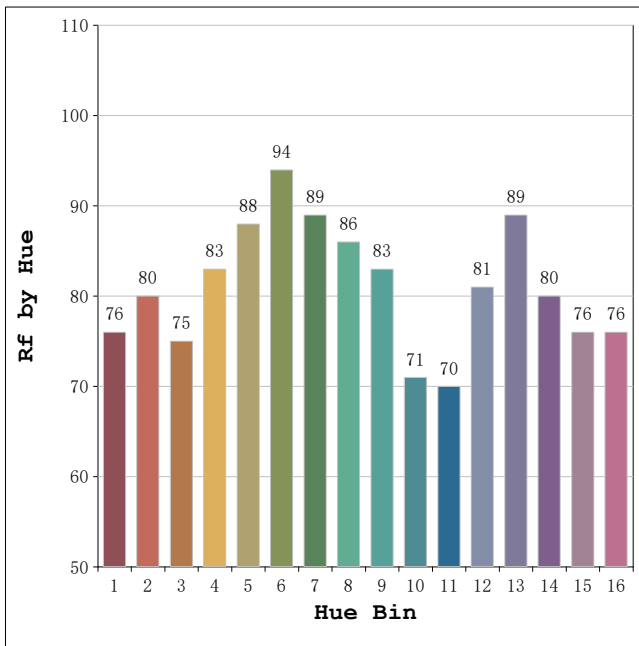
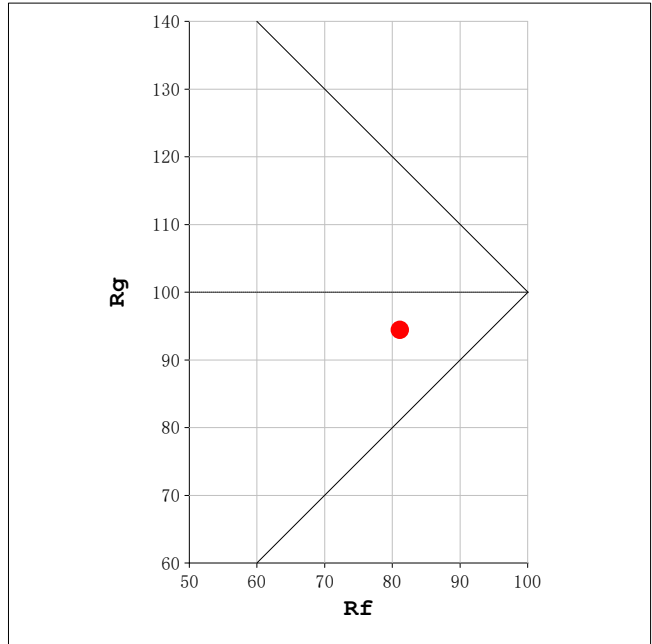
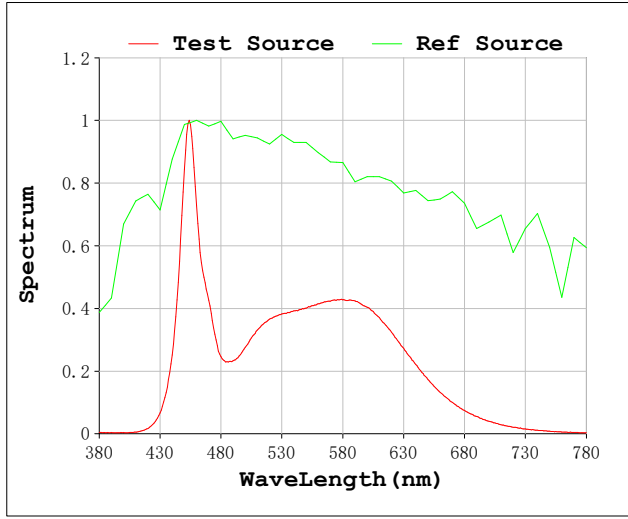
V = 230.02 V I = 0.06856 A P = 14.28 W PF = 0.9056

Status: Integral T = 500 ms Ip = 49474 (75%)

Model:Ghost Milano 6000k
 Tester:Sergio Carneros
 Temperature:25Deg
 Manufacturer:Luz Negra S.L

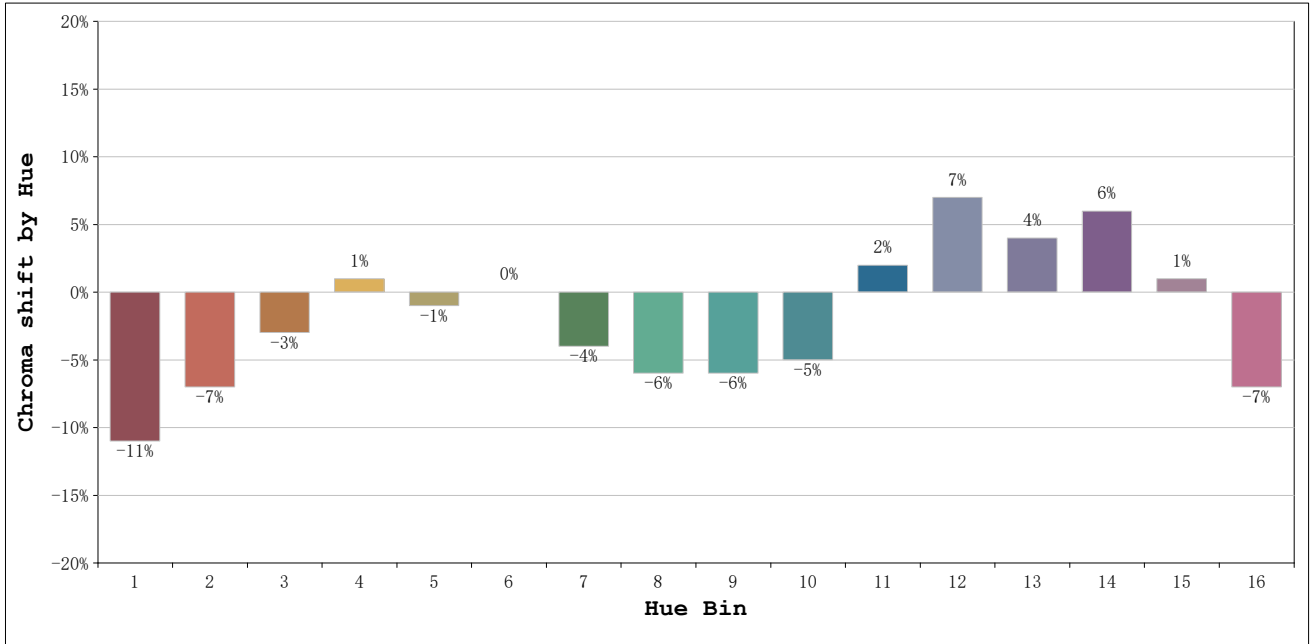
Number: 34.005
 Date:2021-11-19 12:55:14
 Humidity:57%
 Remarks:100cm Tira flexible

Rf: 81 **CCT: 6114 K** **u': 0.2031**
Rg: 94 **Duv: -0.0006** **v': 0.4693**



Model:Ghost Milano 6000k
 Tester:Sergio Carneros
 Temperature:25Deg
 Manufacturer:Luz Negra S.L

Number: 34.005
 Date:2021-11-19 12:55:14
 Humidity:57%
 Remarks:100cm Tira flexible

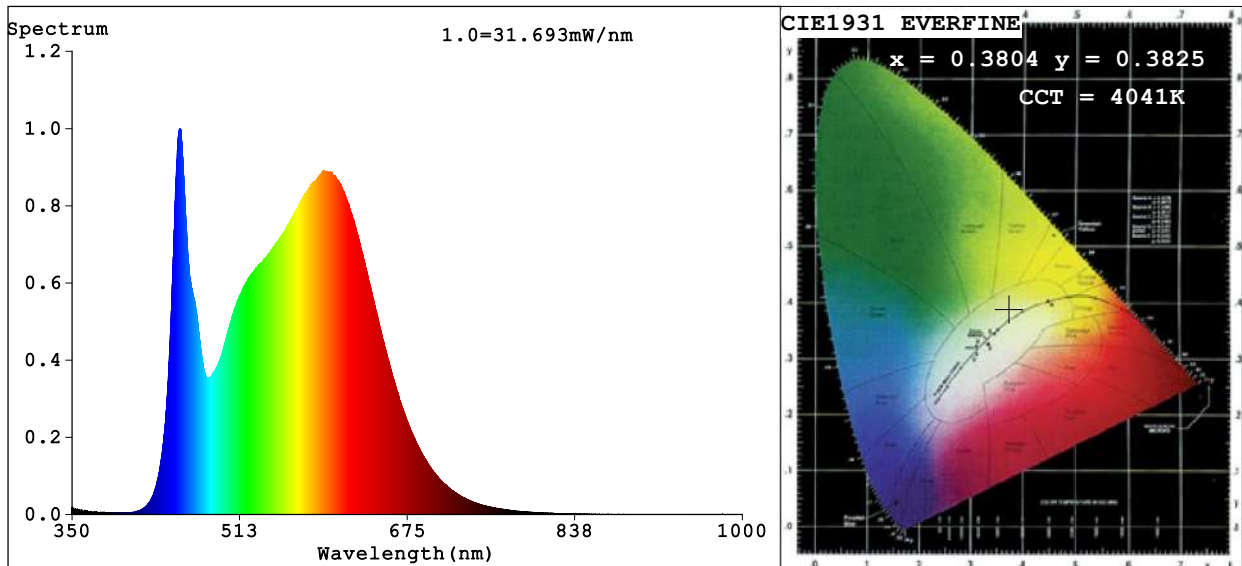


Hue Bin	Hue Angle	Rf	Graphic shift(%)	
			Chroma	Hue
1	0.0° - 22.5°	76	-11	1
2	22.5° - 45.0°	80	-7	7
3	45.0° - 67.5°	75	-3	11
4	67.5° - 90.0°	83	1	9
5	90.0° - 112.5°	88	-1	3
6	112.5° - 135.0°	94	0	0
7	135.0° - 157.5°	89	-4	-1
8	157.5° - 180.0°	86	-6	1
9	180.0° - 202.5°	83	-6	8
10	202.5° - 225.0°	71	-5	17
11	225.0° - 247.5°	70	2	18
12	247.5° - 270.0°	81	7	7
13	270.0° - 292.5°	89	4	-3
14	292.5° - 315.0°	80	6	-10
15	315.0° - 337.5°	76	1	-14
16	337.5° - 360.0°	76	-7	-7

Model:Ghost Milano 6000k
 Tester:Sergio Carneros
 Temperature:25Deg
 Manufacturer:Luz Negra S.L

Number: 34.005
 Date:2021-11-19 12:55:14
 Humidity:57%
 Remarks:100cm Tira flexible

Spectrum Test Report



Color Parameters:

Chromaticity Coordinate: $x=0.3804$ $y=0.3825$ / $u'=0.2228$ $v'=0.5041$
 CCT=4041K (Duv=0.0027) Dominant WL:Ld =577.5nm Purity=29.0%
 Ratio:R=18.5% G=77.3% B=4.2%; Peak WL:Lp=454.3nm FWHM=25.9nm
 Render Index:Ra=85.3 CRI=79.5 TM30:Rf=83 Rg=93
 R1 =84 R2 =93 R3 =96 R4 =82 R5 =84 R6 =90 R7 =86
 R8 =67 R9 =17 R10=83 R11=82 R12=63 R13=87 R14=99 R15=78

Photo Parameters:

Flux = 1642 lm Eff. : 115.13 lm/W Fe = 5.010 W Scotopic:2897.8 S/P:1.7645

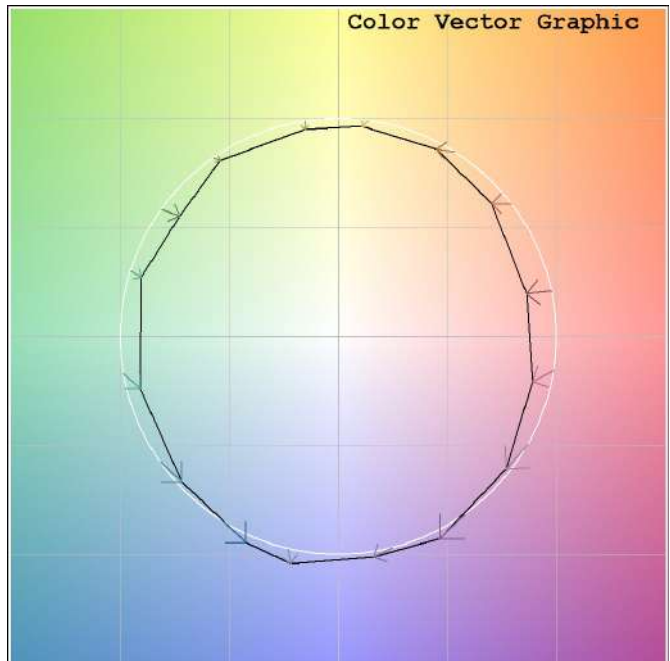
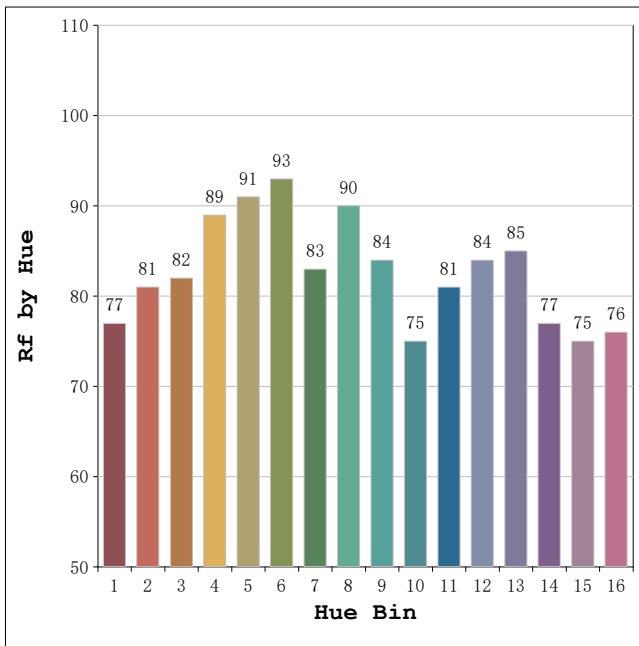
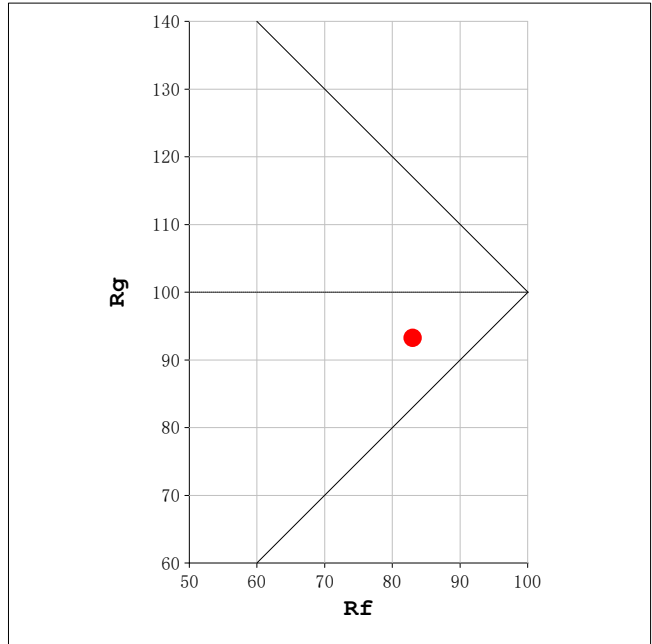
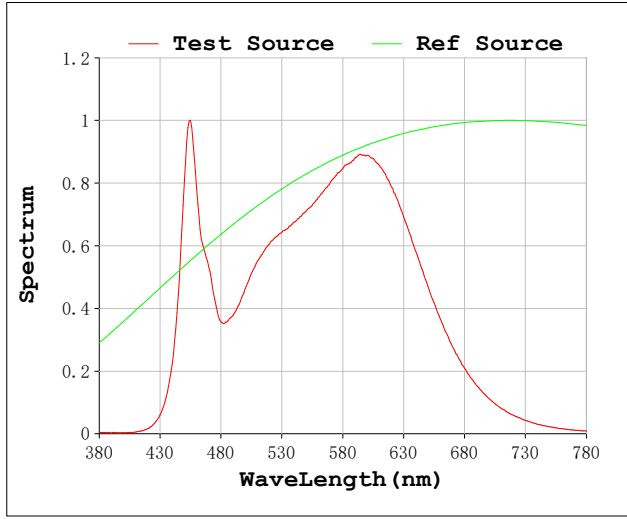
Electrical parameters:

V = 230.17 V I = 0.06844 A P = 14.26 W PF = 0.9055

Status: Integral T = 1000 ms Ip = 54032 (82%)

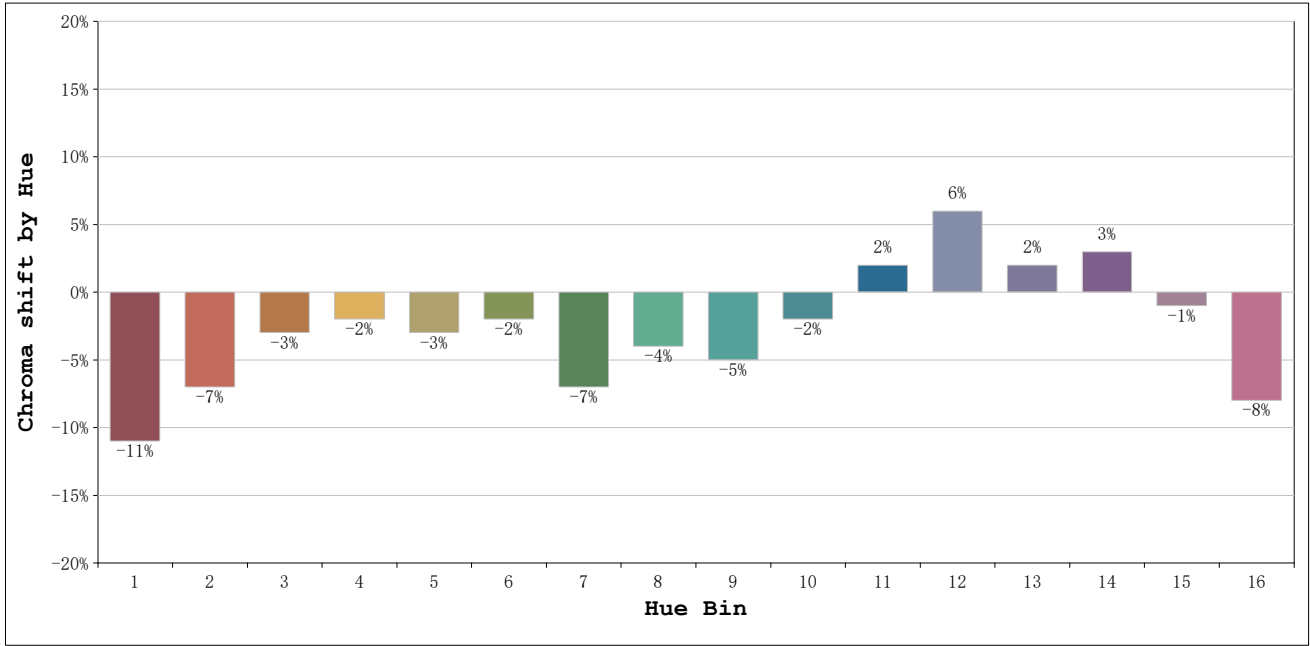
Model: Ecoled Ghost milano 4000K	Number:34.006
Tester:Sergio Carneros	Date:2021-11-19 12:9:58
Temperature:27Deg	Humidity:40%
Manufacturer:Luz Negra S.L	Remarks:100cm de tira flexible

Rf: 83 **CCT: 4041 K** **u': 0.2228**
Rg: 93 **Duv: 0.0027** **v': 0.5041**



Model: Ecoled Ghost milano 4000K
 Tester: Sergio Carneros
 Temperature: 27Deg
 Manufacturer: Luz Negra S.L

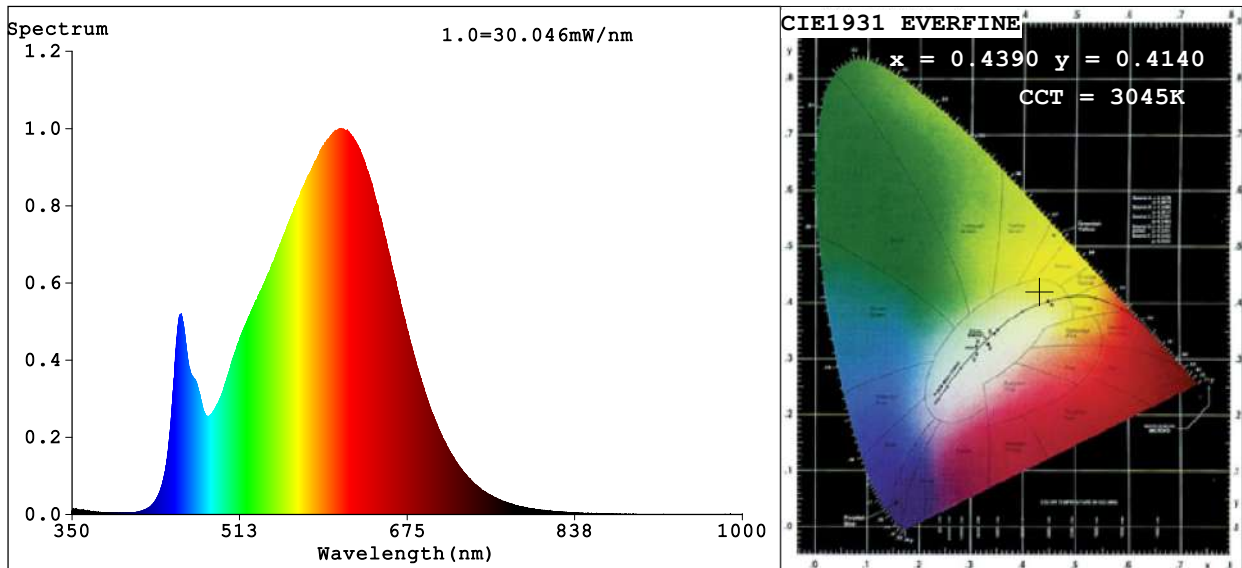
Number: 34.006
 Date: 2021-11-19 12:9:58
 Humidity: 40%
 Remarks: 100cm de tira flexible



Hue Bin	Hue Angle	Rf	Graphic shift(%)	
			Chroma	Hue
1	0.0° - 22.5°	77	-11	1
2	22.5° - 45.0°	81	-7	5
3	45.0° - 67.5°	82	-3	7
4	67.5° - 90.0°	89	-2	2
5	90.0° - 112.5°	91	-3	1
6	112.5° - 135.0°	93	-2	0
7	135.0° - 157.5°	83	-7	-1
8	157.5° - 180.0°	90	-4	2
9	180.0° - 202.5°	84	-5	8
10	202.5° - 225.0°	75	-2	13
11	225.0° - 247.5°	81	2	14
12	247.5° - 270.0°	84	6	2
13	270.0° - 292.5°	85	2	-8
14	292.5° - 315.0°	77	3	-14
15	315.0° - 337.5°	75	-1	-14
16	337.5° - 360.0°	76	-8	-6

Model: Ecoled Ghost milano 4000K Number:34.006
 Tester:Sergio Carneros Date:2021-11-19 12:9:58
 Temperature:27Deg Humidity:40%
 Manufacturer:Luz Negra S.L Remarks:100cm de tira flexible

Spectrum Test Report



Color Parameters:

Chromaticity Coordinate: $x=0.4390$ $y=0.4140$ / $u'=0.2477$ $v'=0.5255$
 CCT=3045K (Duv=0.0036) Dominant WL:Ld =581.4nm Purity=56.1%
 Ratio:R=22.9% G=74.3% B=2.8%; Peak WL:Lp=611.1nm FWHM=153.2nm
 Render Index:Ra=86.9 CRI=82.0 TM30:Rf=85 Rg=94
 R1 =85 R2 =93 R3 =98 R4 =84 R5 =84 R6 =90 R7 =88
 R8 =71 R9 =34 R10=82 R11=83 R12=68 R13=87 R14=99 R15=80

Photo Parameters:

Flux = 1572 lm Eff. : 112.10 lm/W Fe = 5.079 W Scotopic:2167.6 S/P:1.3787

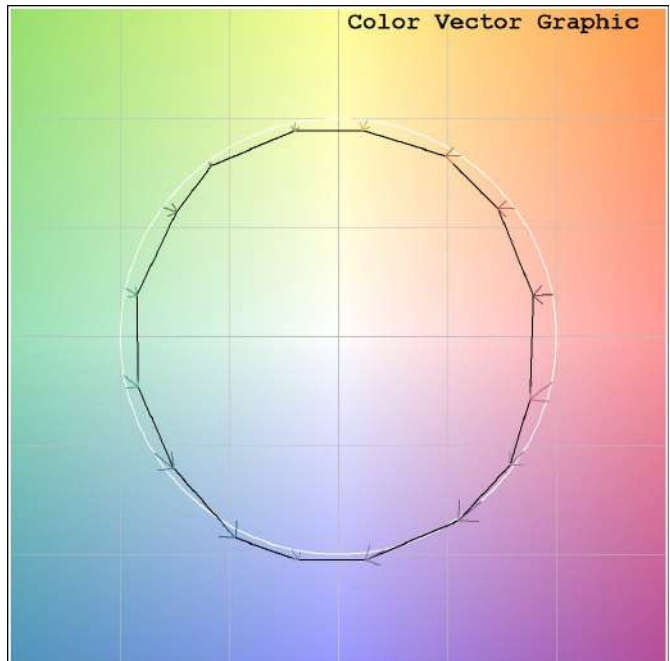
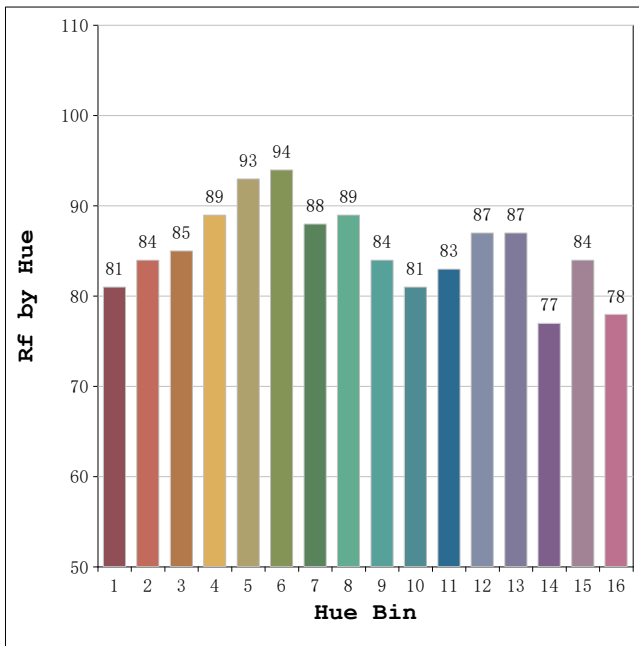
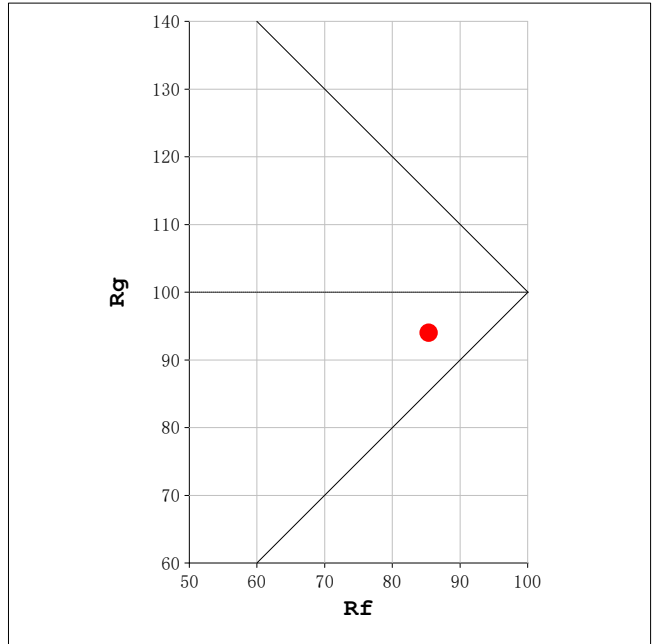
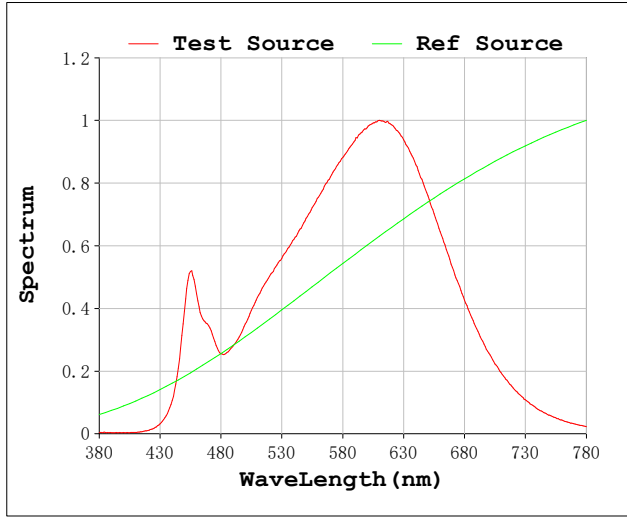
Electrical parameters:

V = 229.99 V I = 0.06747 A P = 14.03 W PF = 0.9038

Status: Integral T = 1023 ms Ip = 50269 (77%)

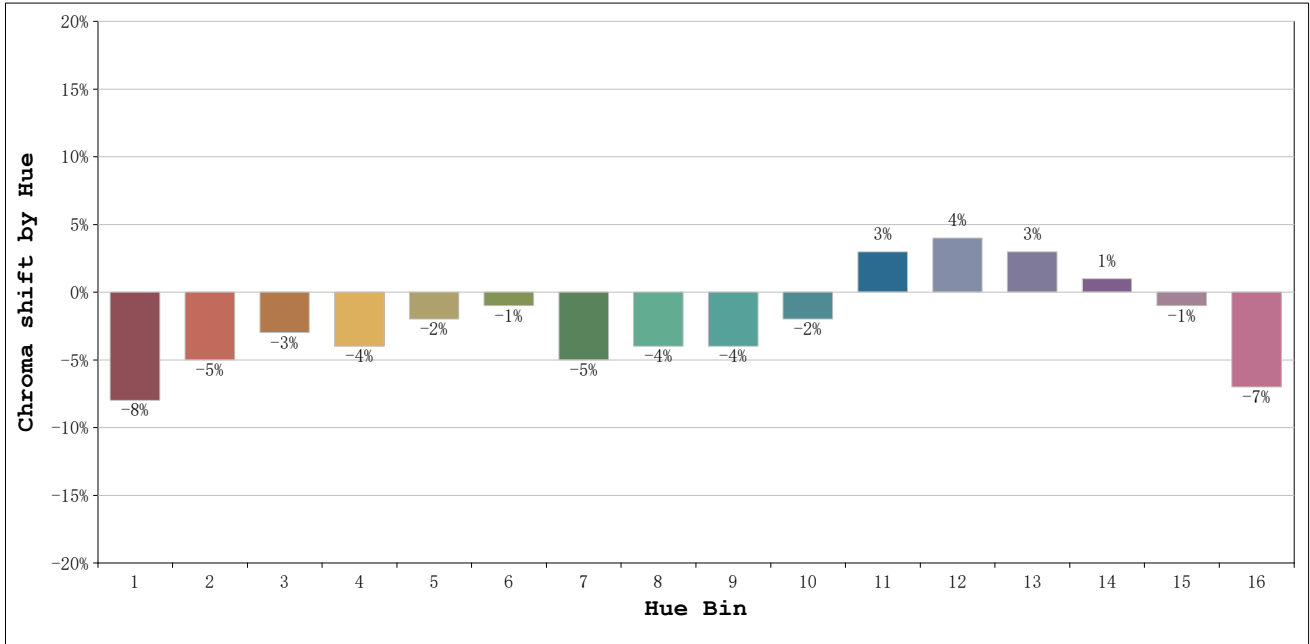
Model:Ecoled Ghost Milano 3000K	Number: 34.007
Tester:Sergio Carneros	Date:2019-10-29 16:36:54
Temperature:25.8Deg	Humidity:49%
Manufacturer:Luz Negra S.L	Remarks:100cm de tira flexible

Rf: 85 **CCT: 3045 K** **u': 0.2477**
Rg: 94 **Duv: 0.0036** **v': 0.5255**



Model:Ecoled Ghost Milano 3000K
 Tester:Sergio Carneros
 Temperature:25.8Deg
 Manufacturer:Luz Negra S.L

Number: 34.007
 Date:2019-10-29 16:36:54
 Humidity:49%
 Remarks:100cm de tira flexible



Hue Bin	Hue Angle	Rf	Graphic shift(%)	
			Chroma	Hue
1	0.0° - 22.5°	81	-8	1
2	22.5° - 45.0°	84	-5	4
3	45.0° - 67.5°	85	-3	6
4	67.5° - 90.0°	89	-4	1
5	90.0° - 112.5°	93	-2	1
6	112.5° - 135.0°	94	-1	0
7	135.0° - 157.5°	88	-5	-1
8	157.5° - 180.0°	89	-4	2
9	180.0° - 202.5°	84	-4	6
10	202.5° - 225.0°	81	-2	10
11	225.0° - 247.5°	83	3	11
12	247.5° - 270.0°	87	4	4
13	270.0° - 292.5°	87	3	-9
14	292.5° - 315.0°	77	1	-12
15	315.0° - 337.5°	84	-1	-8
16	337.5° - 360.0°	78	-7	-9

Model:Ecoled Ghost Milano 3000K
Tester:Sergio Carneros
Temperature:25.8Deg
Manufacturer:Luz Negra S.L

Number: 34.007
Date:2019-10-29 16:36:54
Humidity:49%
Remarks:100cm de tira flexible