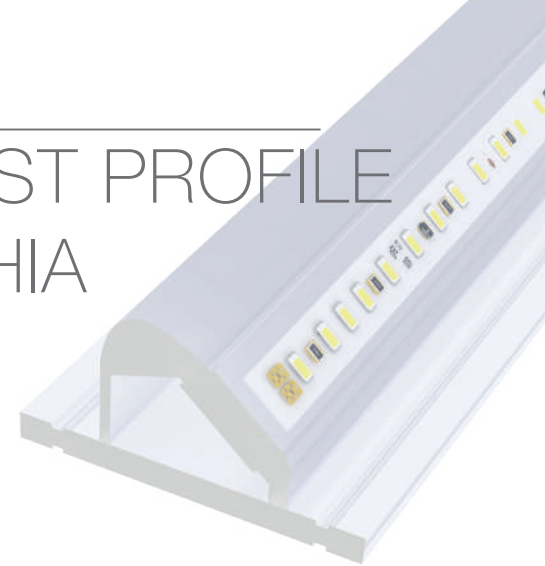


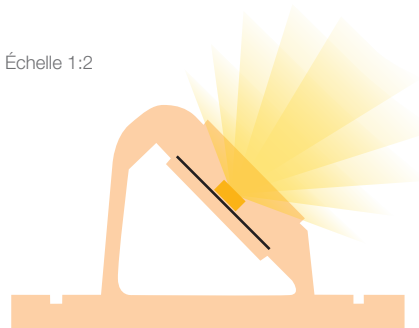
GHOST PROFILE SOPHIA

Profil en silicone opaline de haute qualité extrudé avec un ruban led direct à 230V à l'intérieur. Il permet d'illuminer les reliefs, corniches, etc. Jusqu'à 50 mètres sans chute. Il dispose de rainures latérales qui permettent de visser ou clouer le profil à la surface souhaitée. Il n'a pas besoin d'aluminium pour dissiper la chaleur et peut fonctionner 24h sans interruption. Découpable tous les 10cm. Avec 14W/m de consommation, il offre 1.500 Lm/W et peut être ajusté avec dimmer triac. Sans besoin de soudure grâce à son kit de connexion vissable. Produit apte pour extérieur et zones humides avec étanchéité IP67 et protection UV (il est indispensable de sceller parfaitement le connecteur et l'embout final avec la silicone indiquée). Fourni en rouleaux de 100 mètres ou coupé sur mesure (MOQ 1m).

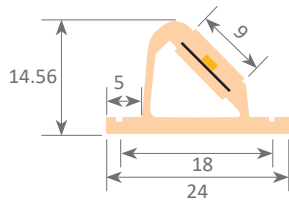
2 ans de garantie prolongable à 3 ans si les connexions de la section demandée sont réalisées par Luz Negra. Conception et brevet mondial espagnol.



Échelle 1:2



Échelle 1:1



Puissance (W)	14W/m
Voltage (V)	230V
Émission de la lumière	120°
Étanchéité	IP67
N° leds/m	140
Coupable	chaque 100mm
Température de travail	-20°C / +40°C
Apte pour	usage exclusif à l'extérieur
Emballage	par mètres
Garantie	3 années



Ghost profile Sophia

34.014	blanc	6000°K	14W/m	1500 Lm
34.015	blanc	4000°K	14W/m	1450 Lm
34.016	blanc	3000°K	14W/m	1400 Lm



Kit de connexion IP65

42.005	connecteur avec câble de 100cm
42.004	kit (connecteur avec câble de 10 cm, embout final, embout avec gorge pour connecteur, vis et silicone)



Connecteur IP20

42.007	connecteur (sans câble) adéquat pour visser les câbles
--------	--------------------------------------------------------



Embout avec gorge pour connecteur

19.251	silicone transparent
--------	----------------------



Embout final

19.181	silicone transparent
--------	----------------------

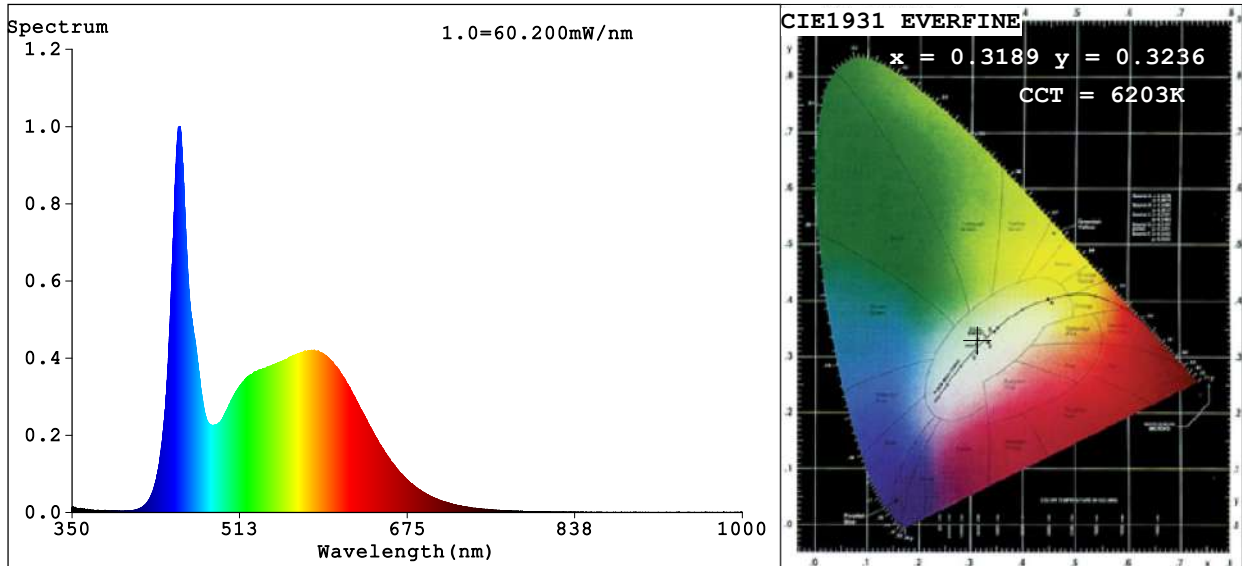


Silicone pour sceller

22.138	opaline	45ml
22.140	transparent	45ml



Spectrum Test Report



Color Parameters:

Chromaticity Coordinate: $x=0.3189$ $y=0.3236$ / $u'=0.2042$ $v'=0.4663$
 CCT=6203K (Duv=-0.0027) Dominant WL:Ld =482.5nm Purity=5.7%
 Ratio:R=14.7% G=79.2% B=6.1%; Peak WL:Lp=454.6nm FWHM=20.9nm
 Render Index:Ra=86.1 CRI=80.3 TM30:Rf=81 Rg=95
 R1 =86 R2 =94 R3 =94 R4 =84 R5 =86 R6 =87 R7 =87
 R8 =72 R9 =23 R10=82 R11=84 R12=60 R13=90 R14=97 R15=84

Photo Parameters:

Flux = 1609 lm Eff. : 113.87 lm/W Fe = 5.293 W Scotopic:3620.8 S/P:2.2502

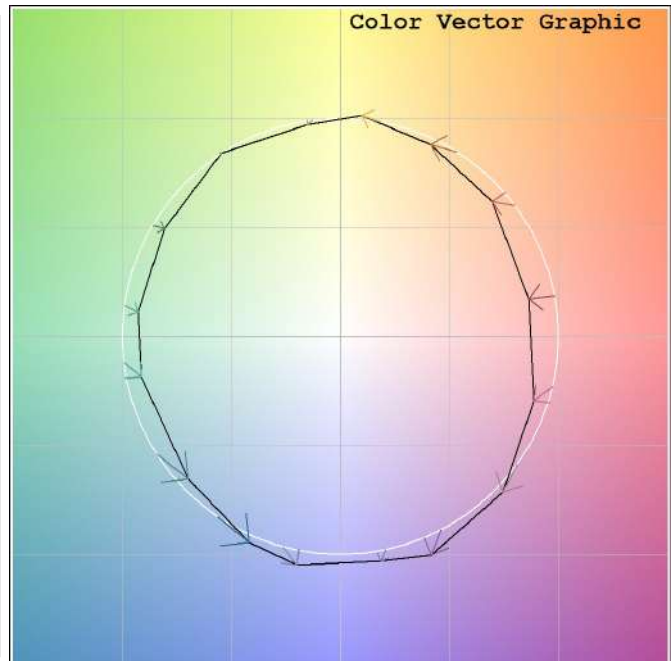
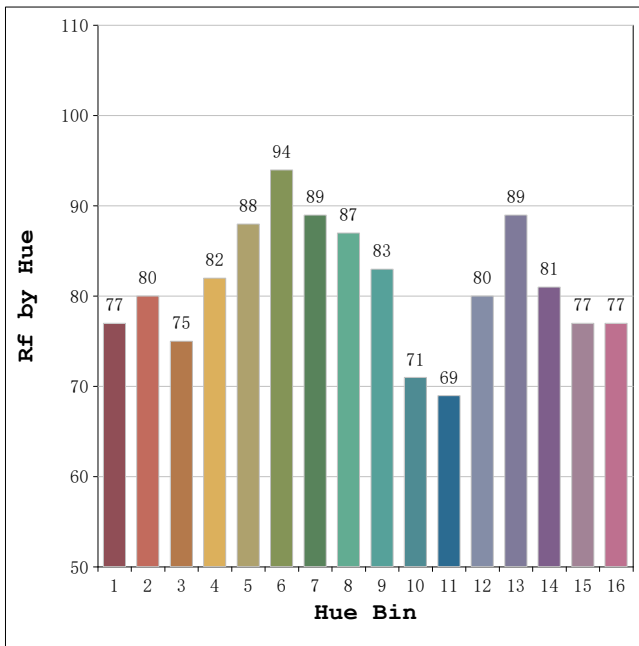
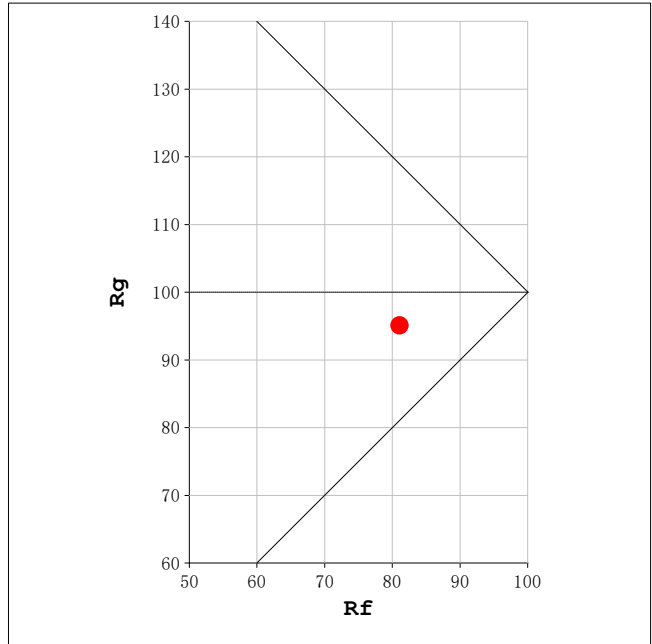
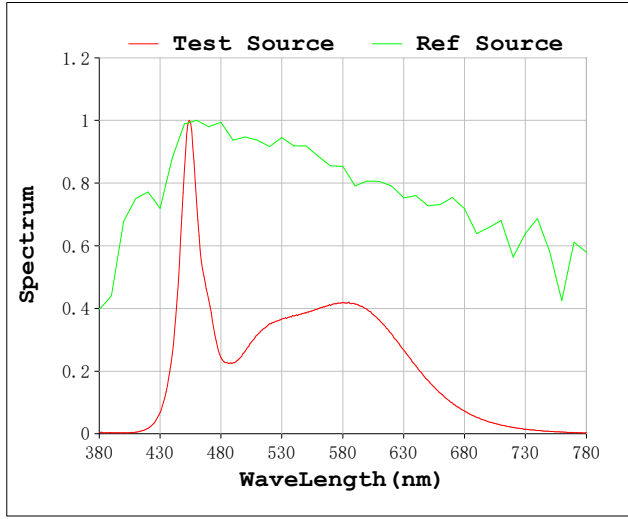
Electrical parameters:

V = 230.10 V I = 0.06792 A P = 14.13 W PF = 0.9042

Status: Integral T = 500 ms Ip = 50112 (76%)

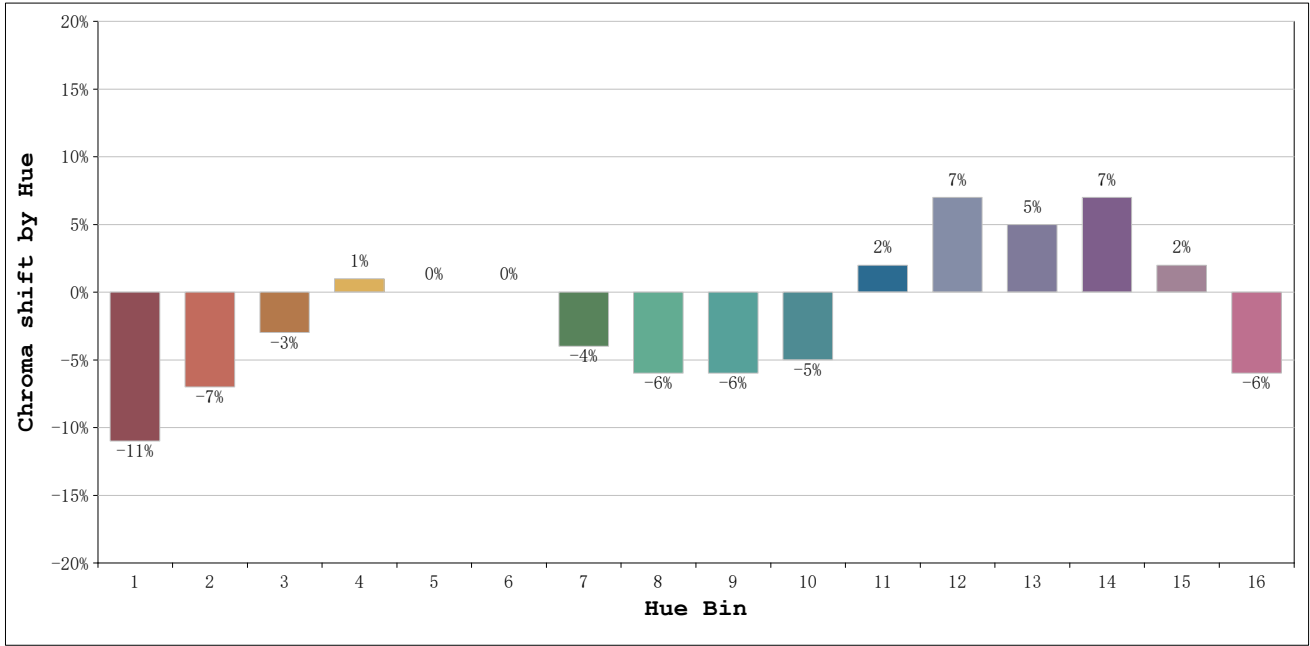
Model:Ecoled Ghost Sophia 6000K	Number: 34.014
Tester:Sergio Carneros	Date:
Temperature:12Deg	Humidity:58%
Manufacturer:Luz Negra	Remarks:100cm de tira flexible

Rf: 81 **CCT: 6203 K** **u': 0.2042**
Rg: 95 **Duv: -0.0027** **v': 0.4663**



Model:Ecoled Ghost Sophia 6000K
 Tester:Sergio Carneros
 Temperature:12Deg
 Manufacturer:Luz Negra

Number: 34.014
 Date:
 Humidity:58%
 Remarks:100cm de tira flexible

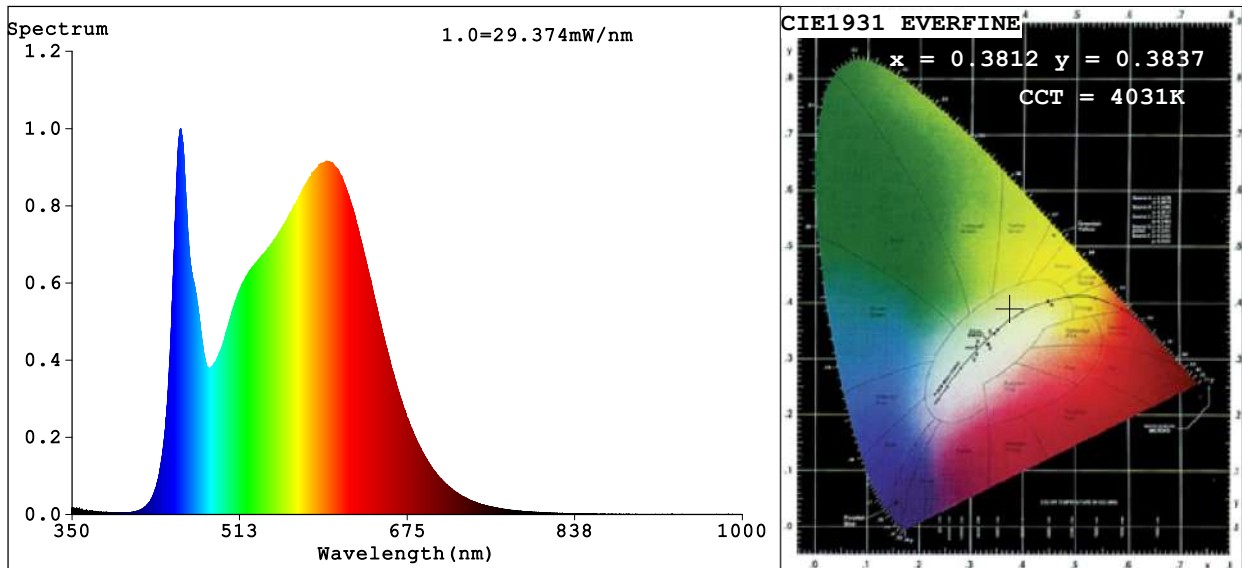


Hue Bin	Hue Angle	Rf	Graphic shift(%)	
			Chroma	Hue
1	0.0° - 22.5°	77	-11	1
2	22.5° - 45.0°	80	-7	7
3	45.0° - 67.5°	75	-3	12
4	67.5° - 90.0°	82	1	9
5	90.0° - 112.5°	88	0	3
6	112.5° - 135.0°	94	0	0
7	135.0° - 157.5°	89	-4	-1
8	157.5° - 180.0°	87	-6	2
9	180.0° - 202.5°	83	-6	8
10	202.5° - 225.0°	71	-5	17
11	225.0° - 247.5°	69	2	19
12	247.5° - 270.0°	80	7	8
13	270.0° - 292.5°	89	5	-2
14	292.5° - 315.0°	81	7	-9
15	315.0° - 337.5°	77	2	-13
16	337.5° - 360.0°	77	-6	-7

Model:Ecoled Ghost Sophia 6000K
Tester:Sergio Carneros
Temperature:12Deg
Manufacturer:Luz Negra

Number: 34.014
Date:
Humidity:58%
Remarks:100cm de tira flexible

Spectrum Test Report



Color Parameters:

Chromaticity Coordinate: $x=0.3812$ $y=0.3837$ / $u'=0.2228$ $v'=0.5047$
 CCT=4031K (Duv=0.0030) Dominant WL:Ld =577.4nm Purity=29.5%
 Ratio:R=18.5% G=77.2% B=4.3%; Peak WL:Lp=455.3nm FWHM=27.2nm
 Render Index:Ra=85.2 CRI=79.6 TM30:Rf=83 Rg=93
 R1 =84 R2 =94 R3 =96 R4 =82 R5 =84 R6 =91 R7 =85
 R8 =66 R9 =17 R10=84 R11=81 R12=63 R13=87 R14=98 R15=78

Photo Parameters:

Flux = 1563 lm Eff. : 111.80 lm/W Fe = 4.776 W Scotopic:2766.1 S/P:1.7694

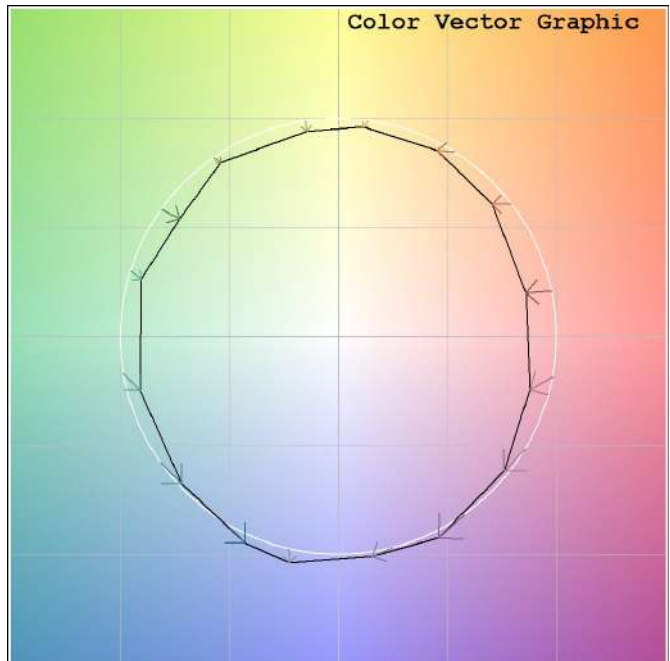
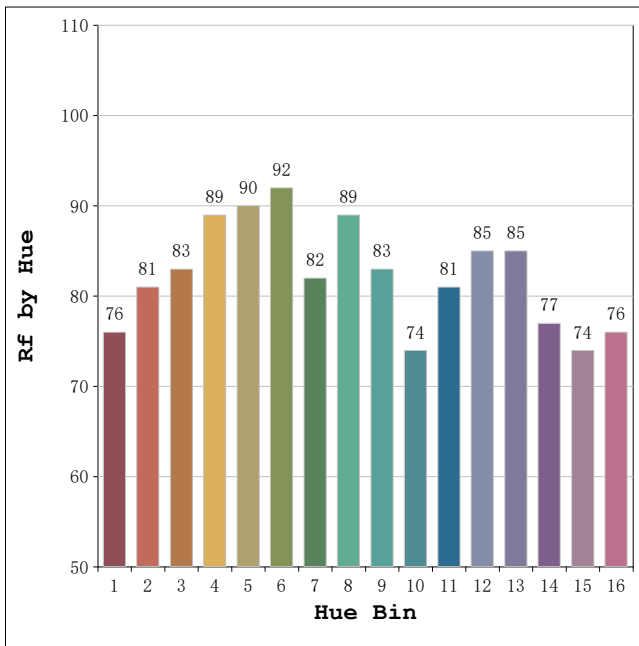
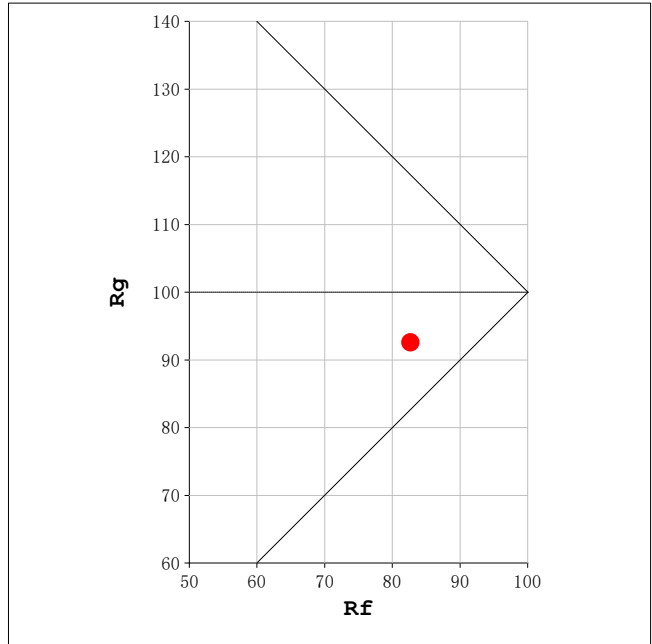
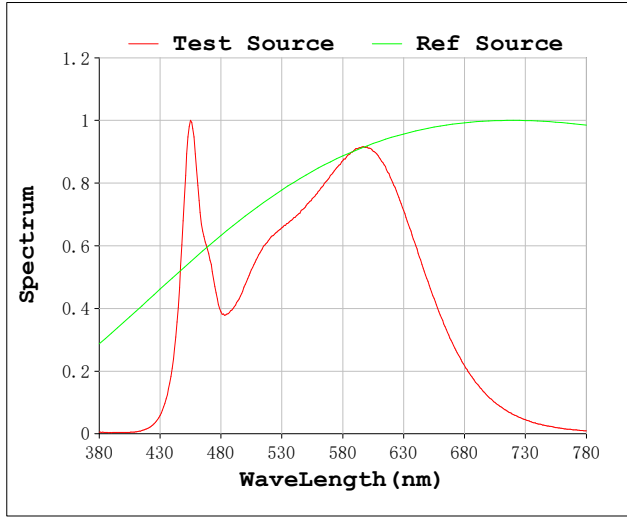
Electrical parameters:

V = 230.09 V I = 0.06721 A P = 13.98 W PF = 0.9042

Status: Integral T = 1000 ms Ip = 52906 (81%)

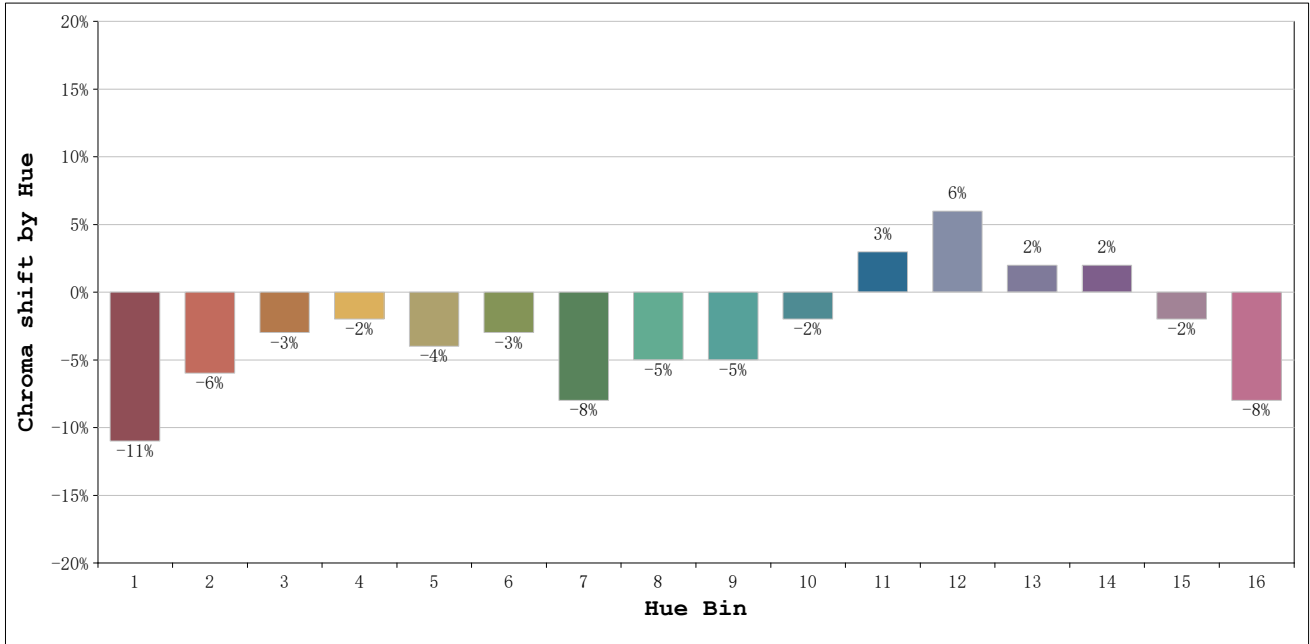
Model:Ecoled Ghost Sophia 4000K	Number: 34.015
Tester:Sergio Carneros	Date:
Temperature:12Deg	Humidity:58%
Manufacturer:Luz Negra	Remarks:100cm de tira flexible

Rf: 83 **CCT: 4031 K** **u': 0.2228**
Rg: 93 **Duv: 0.0030** **v': 0.5047**



Model:Ecoled Ghost Sophia 4000K
 Tester:Sergio Carneros
 Temperature:12Deg
 Manufacturer:Luz Negra

Number: 34.015
 Date:
 Humidity:58%
 Remarks:100cm de tira flexible

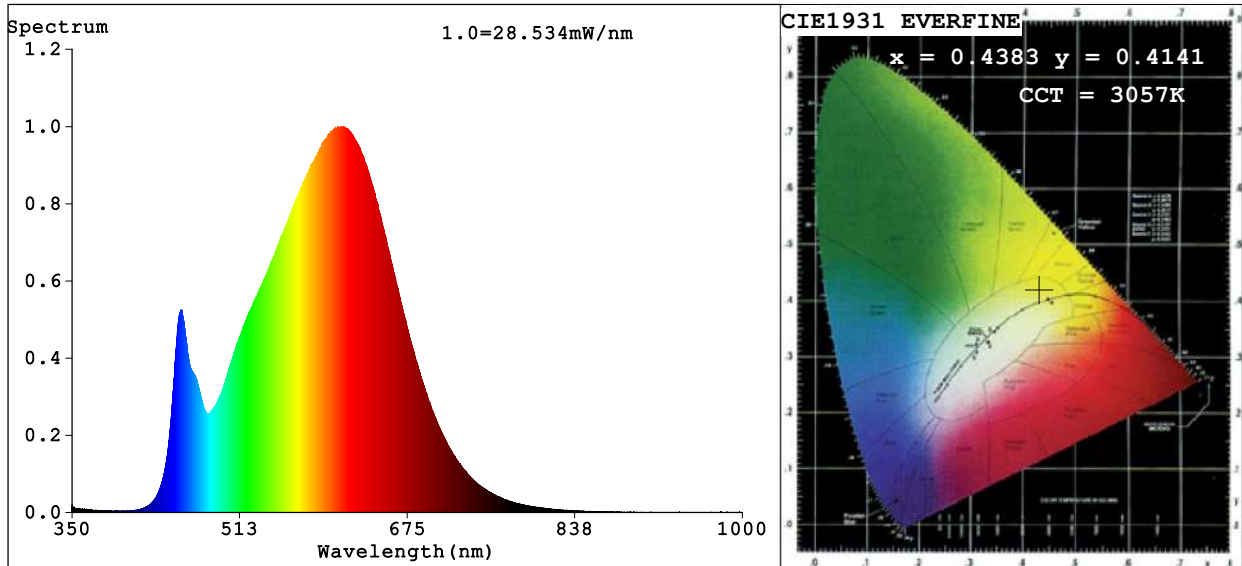


Hue Bin	Hue Angle	Rf	Graphic shift(%)	
			Chroma	Hue
1	0.0° - 22.5°	76	-11	1
2	22.5° - 45.0°	81	-6	5
3	45.0° - 67.5°	83	-3	7
4	67.5° - 90.0°	89	-2	2
5	90.0° - 112.5°	90	-4	0
6	112.5° - 135.0°	92	-3	0
7	135.0° - 157.5°	82	-8	0
8	157.5° - 180.0°	89	-5	3
9	180.0° - 202.5°	83	-5	9
10	202.5° - 225.0°	74	-2	13
11	225.0° - 247.5°	81	3	13
12	247.5° - 270.0°	85	6	2
13	270.0° - 292.5°	85	2	-9
14	292.5° - 315.0°	77	2	-15
15	315.0° - 337.5°	74	-2	-13
16	337.5° - 360.0°	76	-8	-7

Model:Ecoled Ghost Sophia 4000K
Tester:Sergio Carneros
Temperature:12Deg
Manufacturer:Luz Negra

Number: 34.015
Date:
Humidity:58%
Remarks:100cm de tira flexible

Spectrum Test Report



Color Parameters:

Chromaticity Coordinate: $x=0.4383$ $y=0.4141$ / $u'=0.2472$ $v'=0.5255$
 CCT=3057K (Duv=0.0037) Dominant WL:Ld =581.3nm Purity=55.9%
 Ratio:R=22.8% G=74.4% B=2.8%; Peak WL:Lp=613.1nm FWHM=153.8nm
 Render Index:Ra=86.7 CRI=81.7 TM30:Rf=85 Rg=94
 R1 =85 R2 =92 R3 =98 R4 =84 R5 =84 R6 =90 R7 =88
 R8 =71 R9 =33 R10=82 R11=82 R12=68 R13=87 R14=99 R15=80

Photo Parameters:

Flux = 1501 lm Eff. : 115.94 lm/W Fe = 4.846 W Scotopic:2073.8 S/P:1.3814

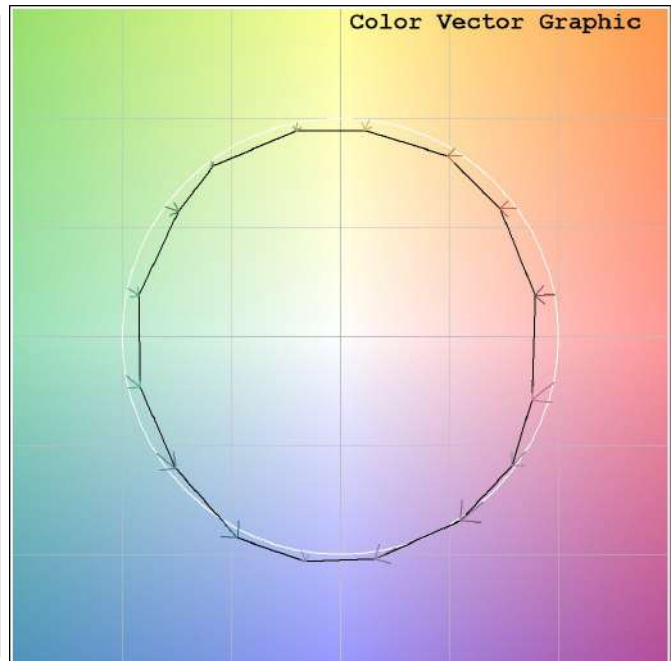
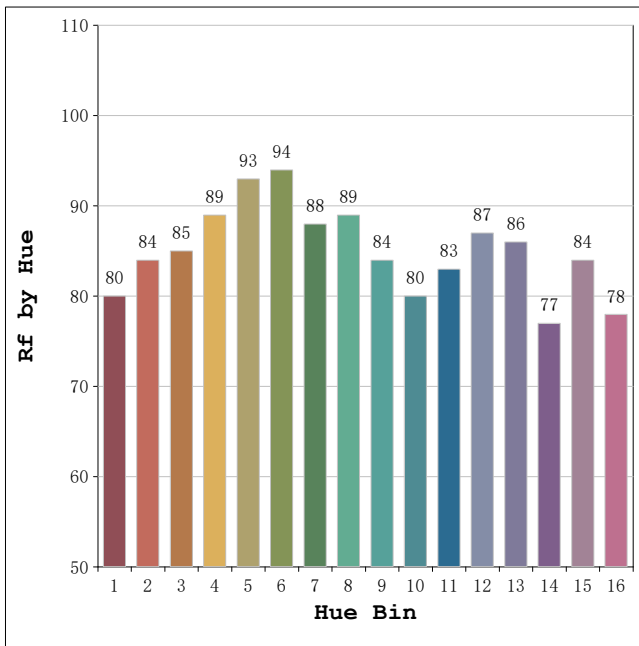
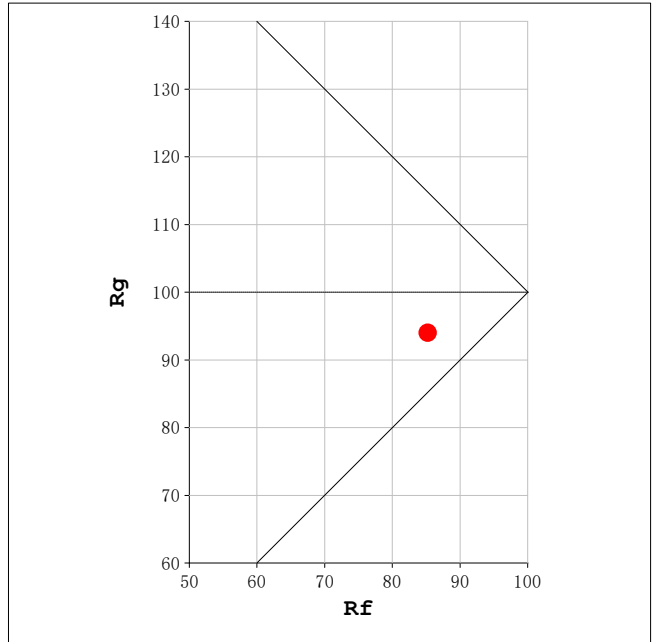
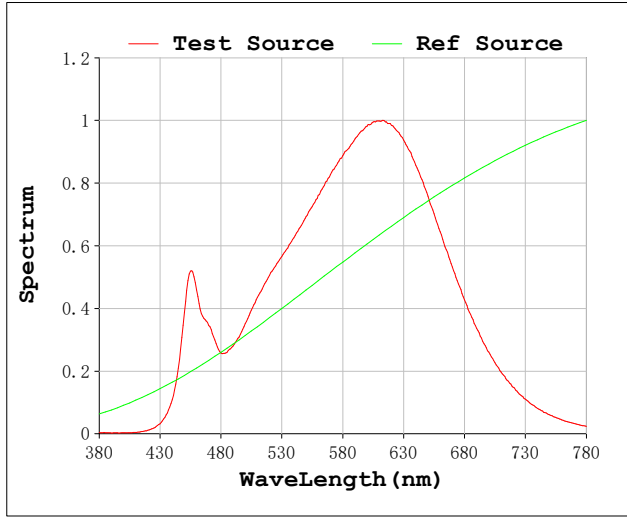
Electrical parameters:

V = 229.99 V I = 0.06210 A P = 12.95 W PF = 0.9065

Status: Integral T = 1119 ms Ip = 49356 (75%)

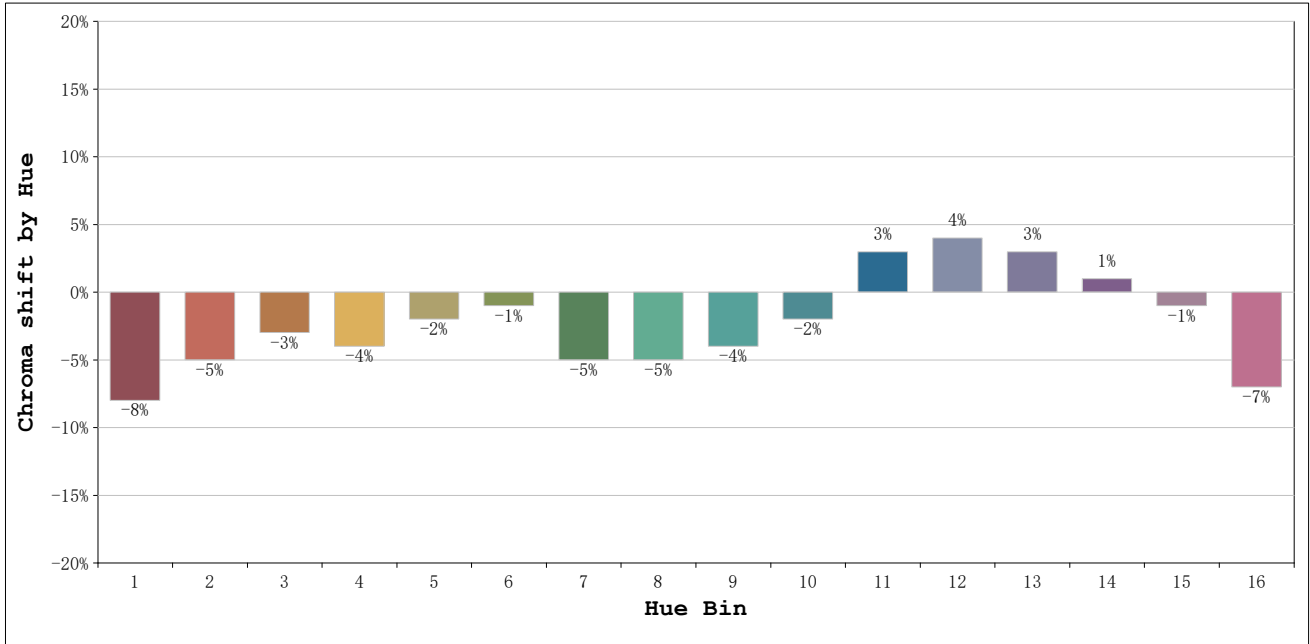
Model:Ecoled Ghost Shopia 3000K	Number: 34.016
Tester:Sergio Carneros	Date:
Temperature:25Deg	Humidity:57%
Manufacturer:Luz Negra	Remarks:100cm de tira flexible

Rf: 85 CCT: 3057 K u': 0.2472
Rg: 94 Duv: 0.0037 v': 0.5255



Model:Ecoled Ghost Shopia 3000K
Tester:Sergio Carneros
Temperature:25Deg
Manufacturer:Luz Negra

Number: 34.016
Date:
Humidity:57%
Remarks:100cm de tira flexible



Hue Bin	Hue Angle	Rf	Graphic shift(%)	
			Chroma	Hue
1	0.0° - 22.5°	80	-8	1
2	22.5° - 45.0°	84	-5	4
3	45.0° - 67.5°	85	-3	6
4	67.5° - 90.0°	89	-4	1
5	90.0° - 112.5°	93	-2	1
6	112.5° - 135.0°	94	-1	0
7	135.0° - 157.5°	88	-5	-1
8	157.5° - 180.0°	89	-5	2
9	180.0° - 202.5°	84	-4	6
10	202.5° - 225.0°	80	-2	10
11	225.0° - 247.5°	83	3	11
12	247.5° - 270.0°	87	4	3
13	270.0° - 292.5°	86	3	-9
14	292.5° - 315.0°	77	1	-12
15	315.0° - 337.5°	84	-1	-8
16	337.5° - 360.0°	78	-7	-9

Model:Ecoled Ghost Shopia 3000K
Tester:Sergio Carneros
Temperature:25Deg
Manufacturer:Luz Negra

Number: 34.016
Date:
Humidity:57%
Remarks:100cm de tira flexible