

Compatibility with connectors and transparent joints

The 42.109 and 42.110 connectors are suitable for non-waterproof led strips with a 10mm PCB.

Below, we have indicated the ecoled models which are compatible with these connectors.

We do not recommend IP65 / 67 led strips due to the complexity of handling the silicone, since the silicone must be removed from the first led.

Compatible led strips:

- Palma
- Tenerife
- Pinto
- COB IP20
- Lanzarote
- Barcelona PRO
- Pink 20
- Antequera
- Trevelez
- Móstoles
- Élite 5 – 10 – 15 – 20
- Topacio
- Castellón
- Hierro
- Barcelona
- Alcorcón
- Sevilla
- Motril
- Gomera
- Córdoba

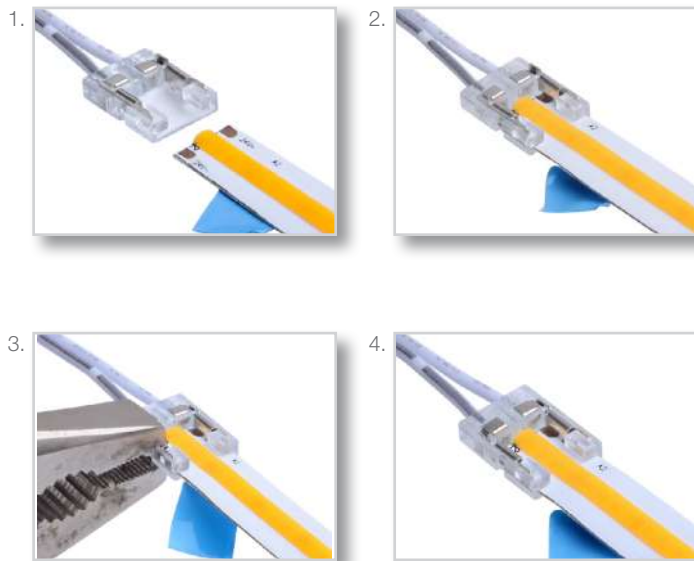


Ref: 42.109

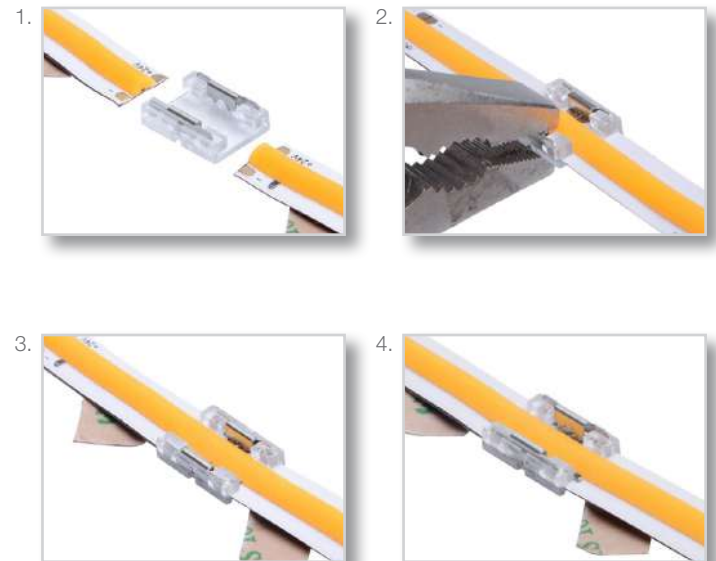


Ref: 42.110

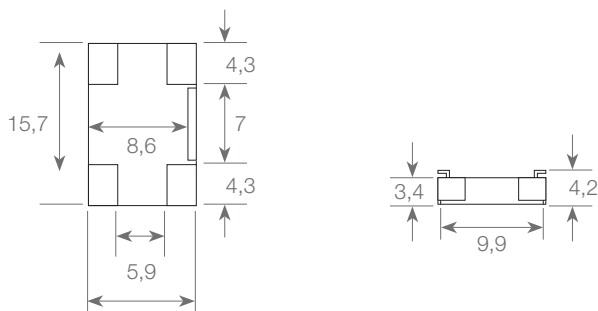
Installation 42.109:



Installation 42.110:



Medidas 42.110:





LUZ NEGRA

linear lighting solutions