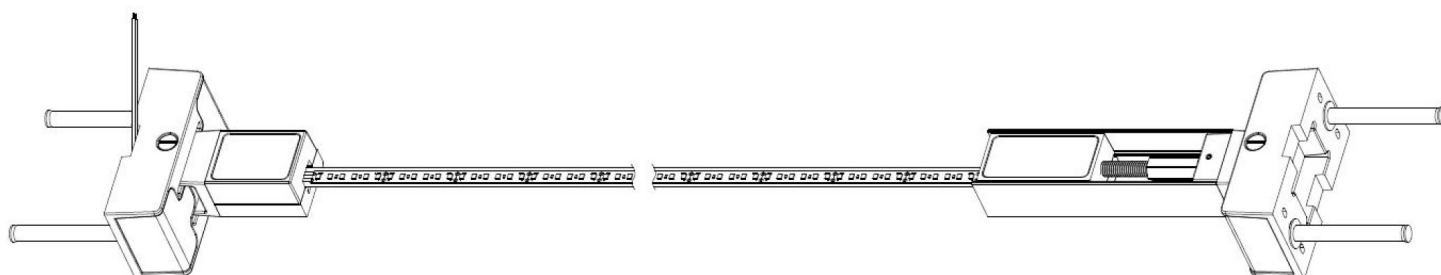




# Soft Line

by Luz Negra

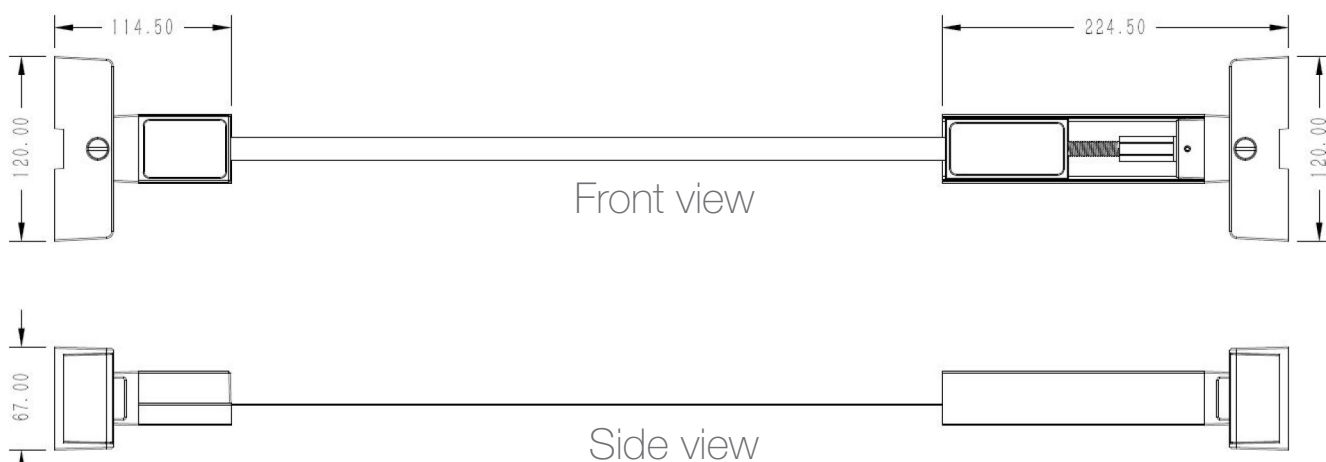




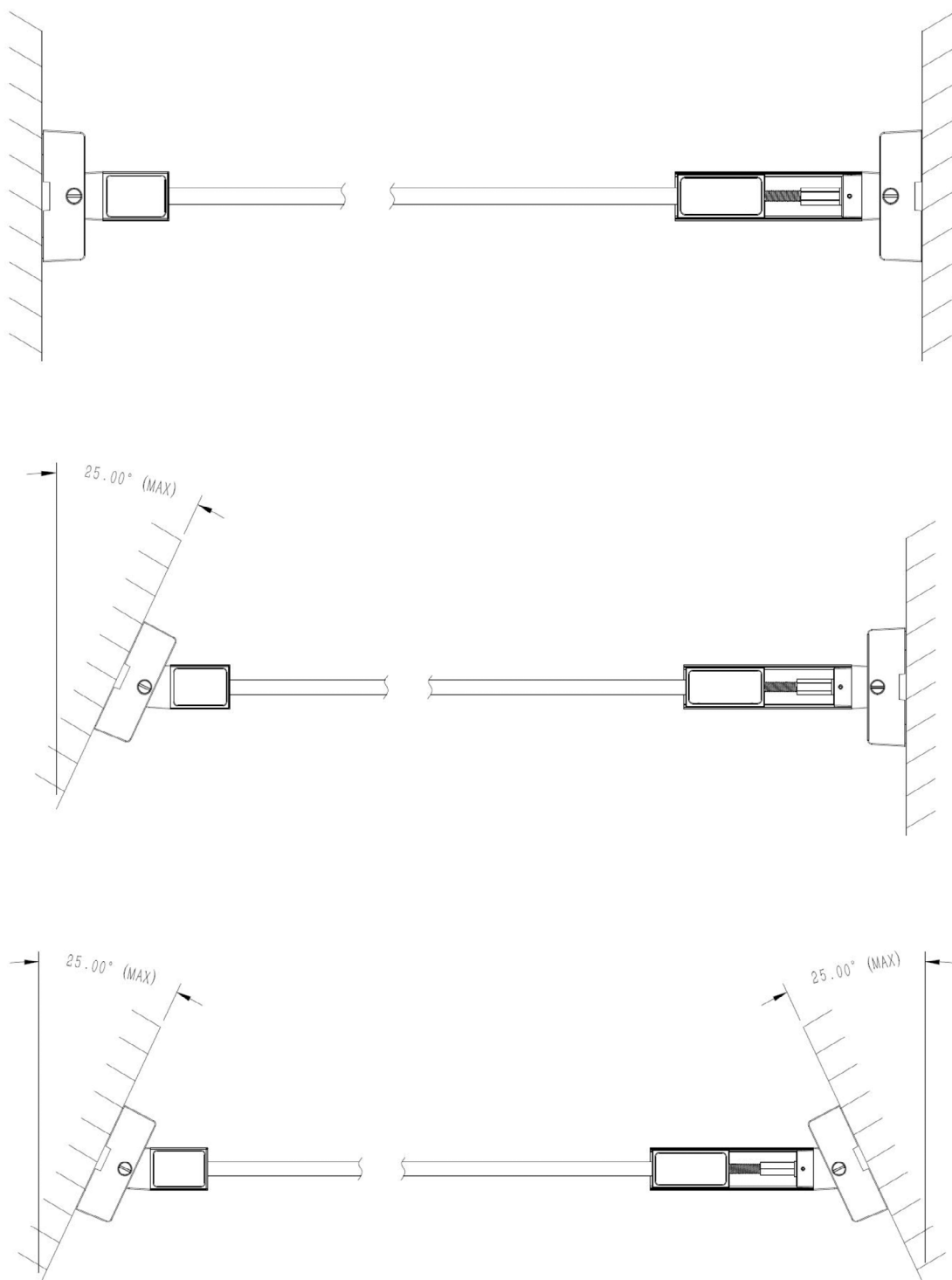
Soft Line is a new concept in linear luminaires and offers indirect wall and ceiling lighting. It consists of two supports that are fixed to the walls, ceilings or floors and both are joined by a thin steel plate where we will attach the led strip that we want to use. The steel plate measures 30 metres and we can cut it, meaning we can adjust the size of our luminaire.

The steel plate allows you to apply led strips up to 12mm wide. We recommend our ecoled Infinity model (direct at 230v) meaning we can place the 30 metres in a row without any voltage drop or the need for a power supply. Another interesting flexible strip would be the ecoled Castellón (48w) which allows up to 30 metres without any voltage drop, feeding only from one end.

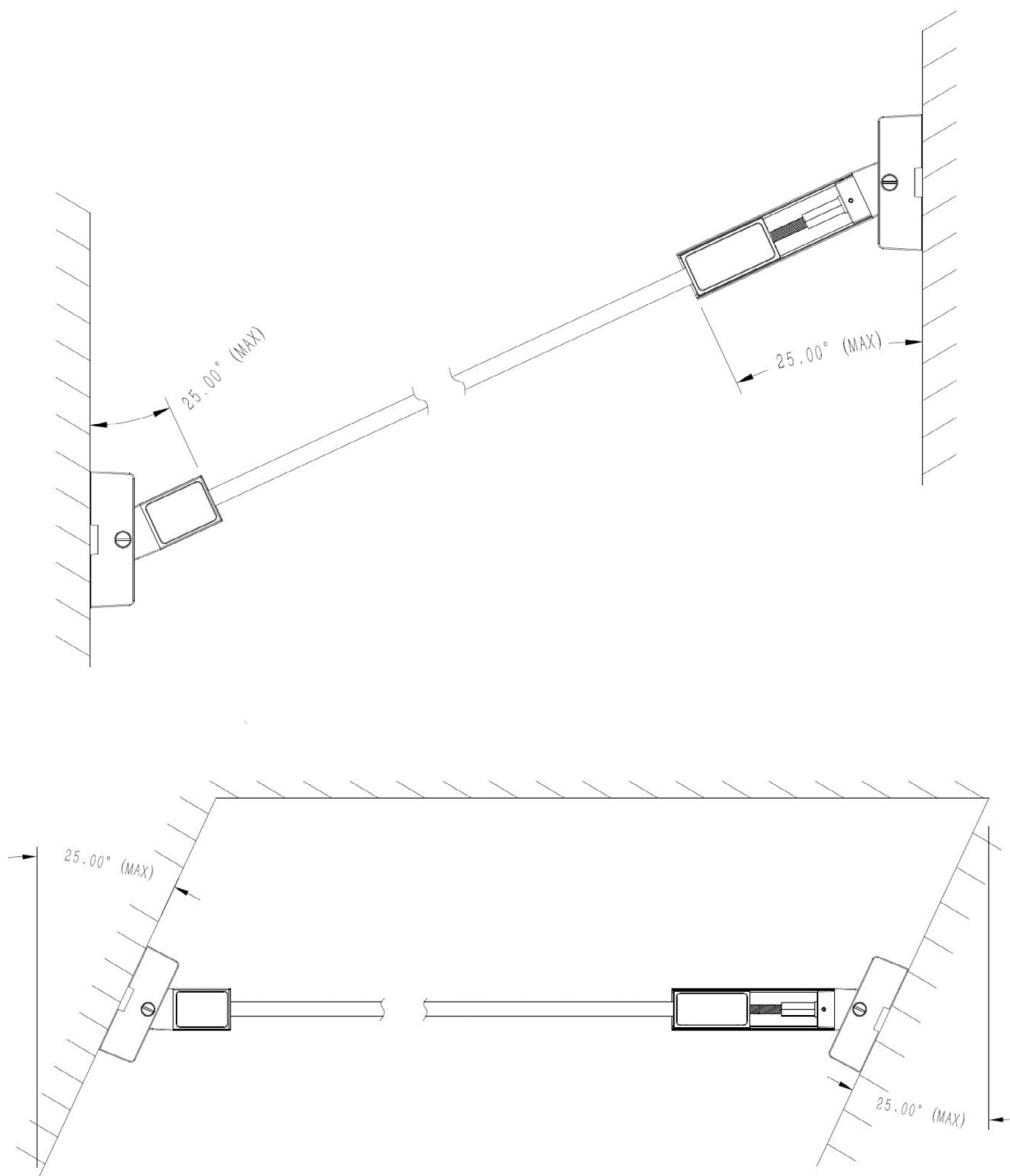
## Dimensions



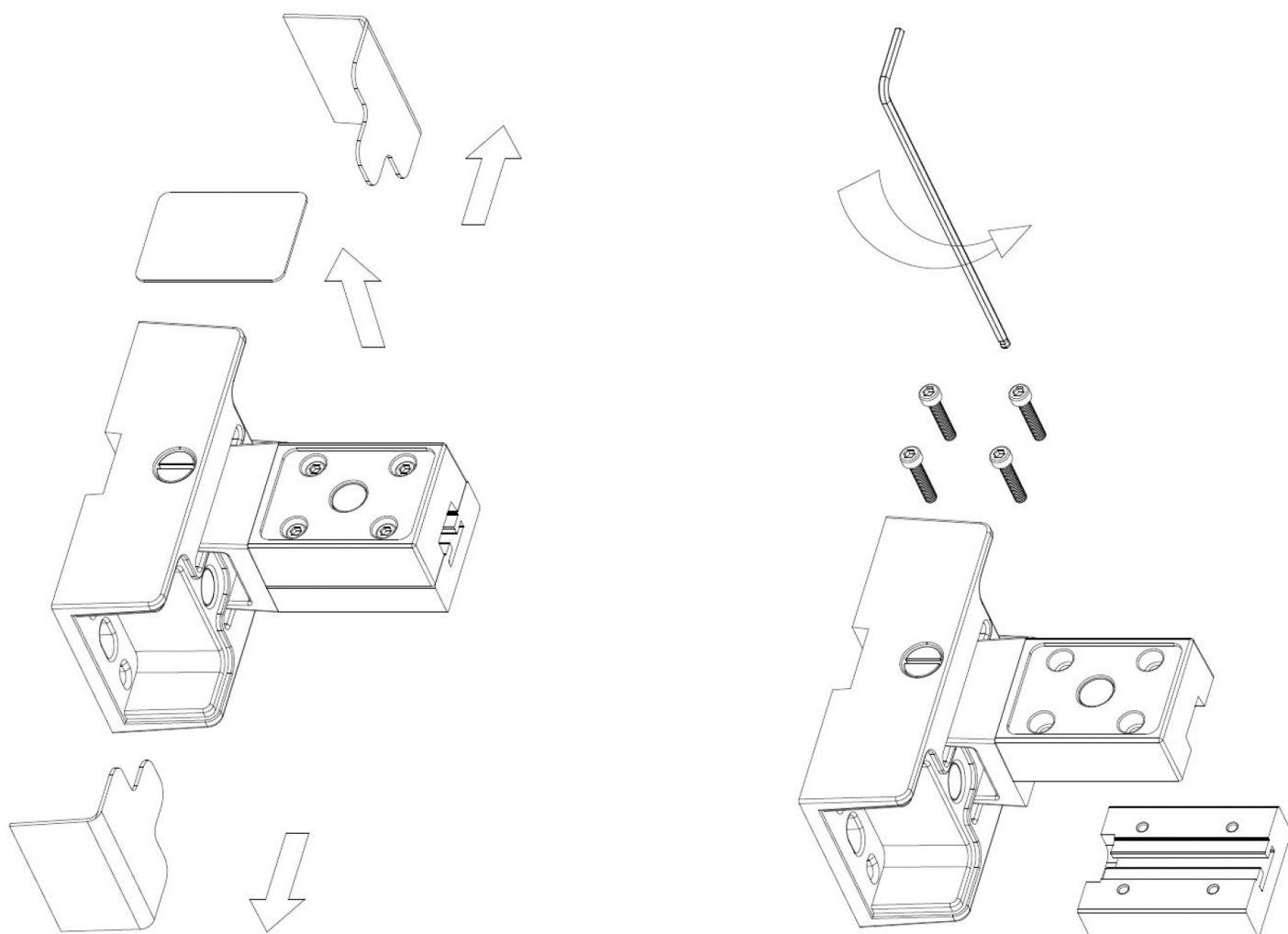
Possible ways of installation



Possible ways of installation

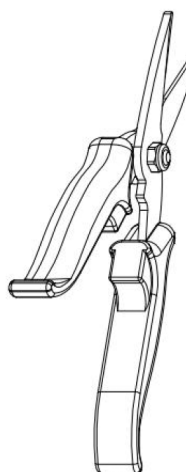
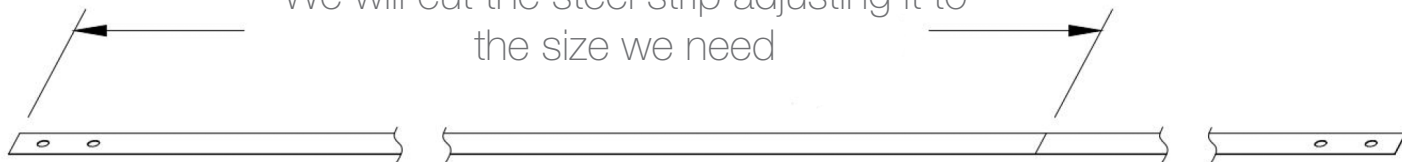


1. Installation of the steel plate on the short bracket

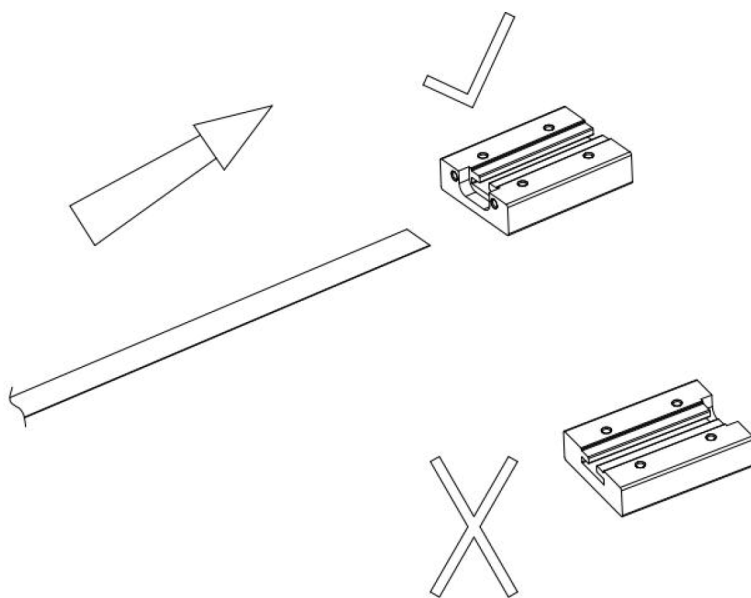
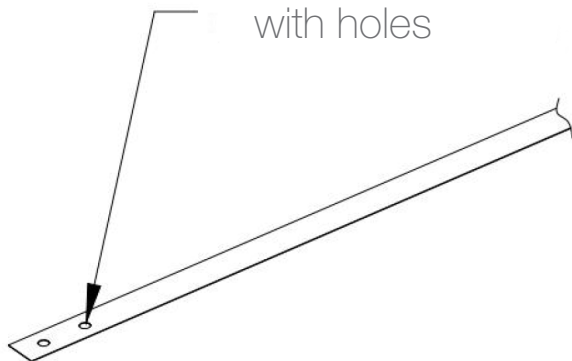


First, we will remove the external trim caps, access the interior and remove the 4 hexagonal head screws

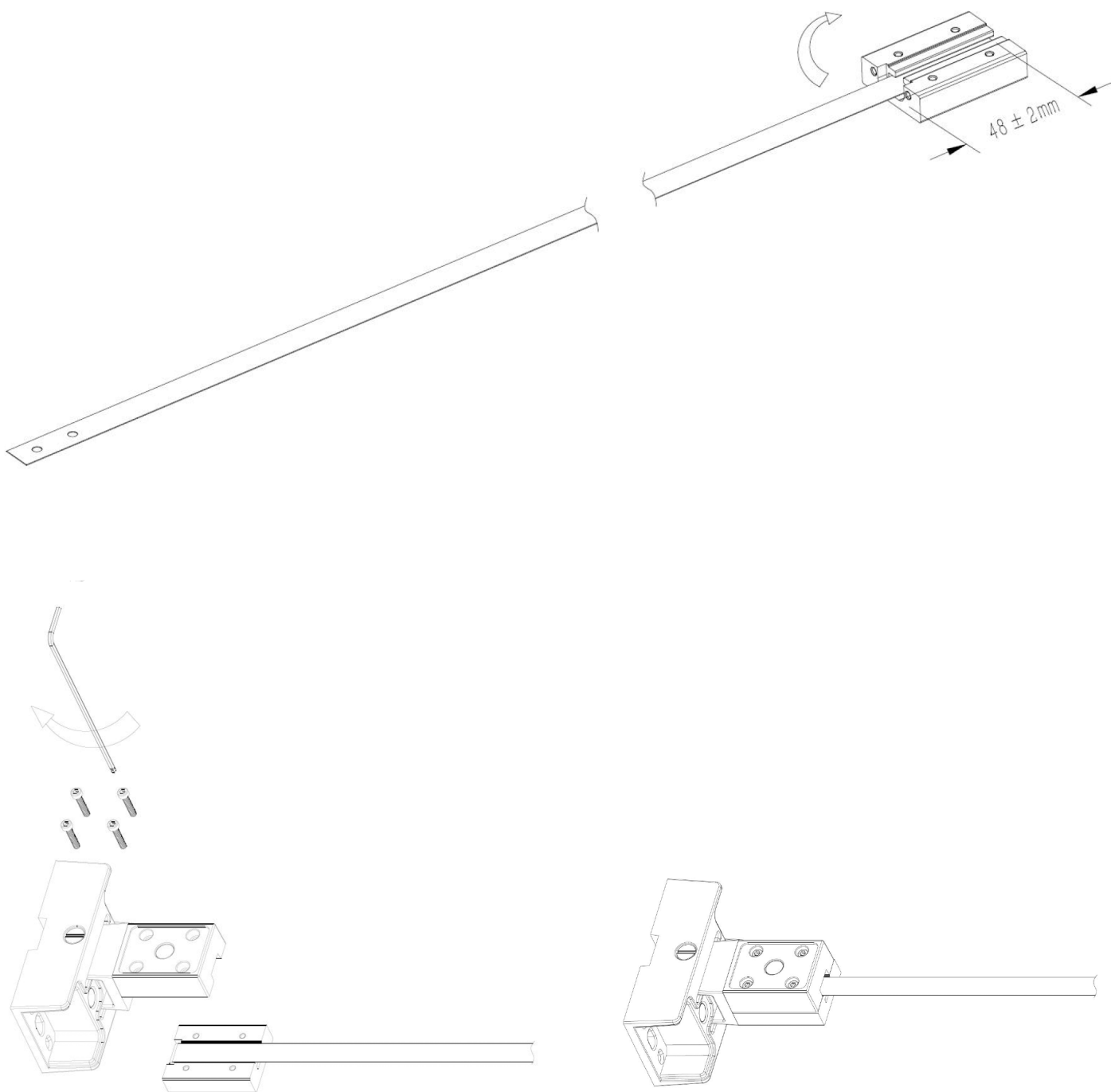
We will cut the steel strip adjusting it to  
the size we need



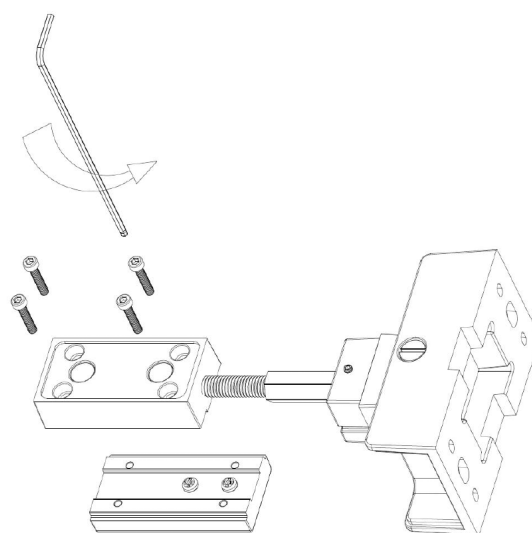
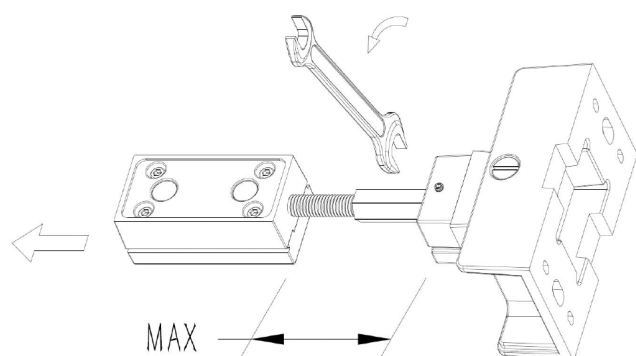
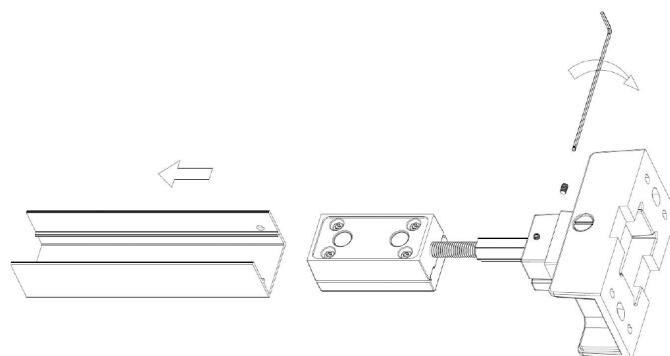
End of the steel strip  
with holes



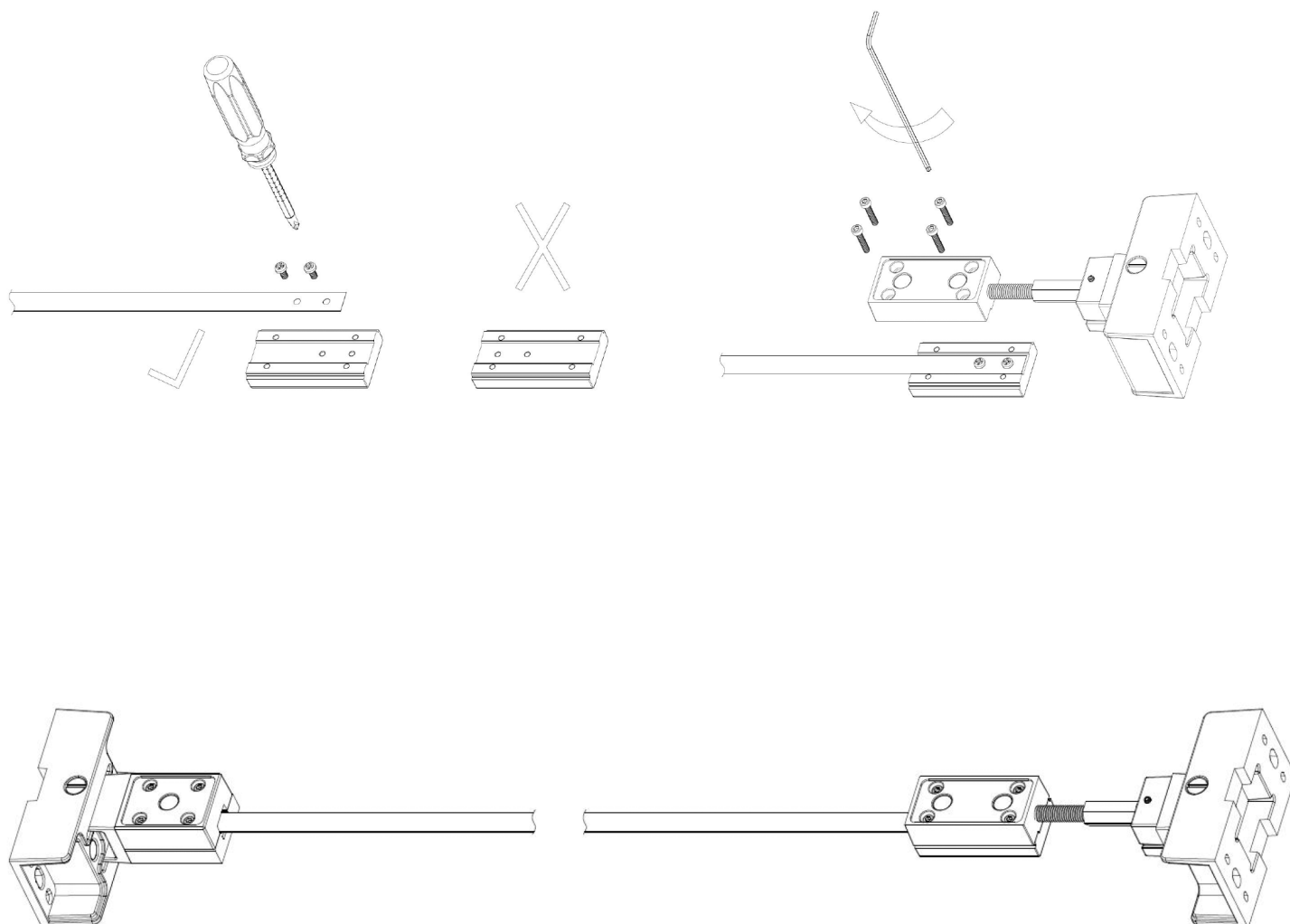




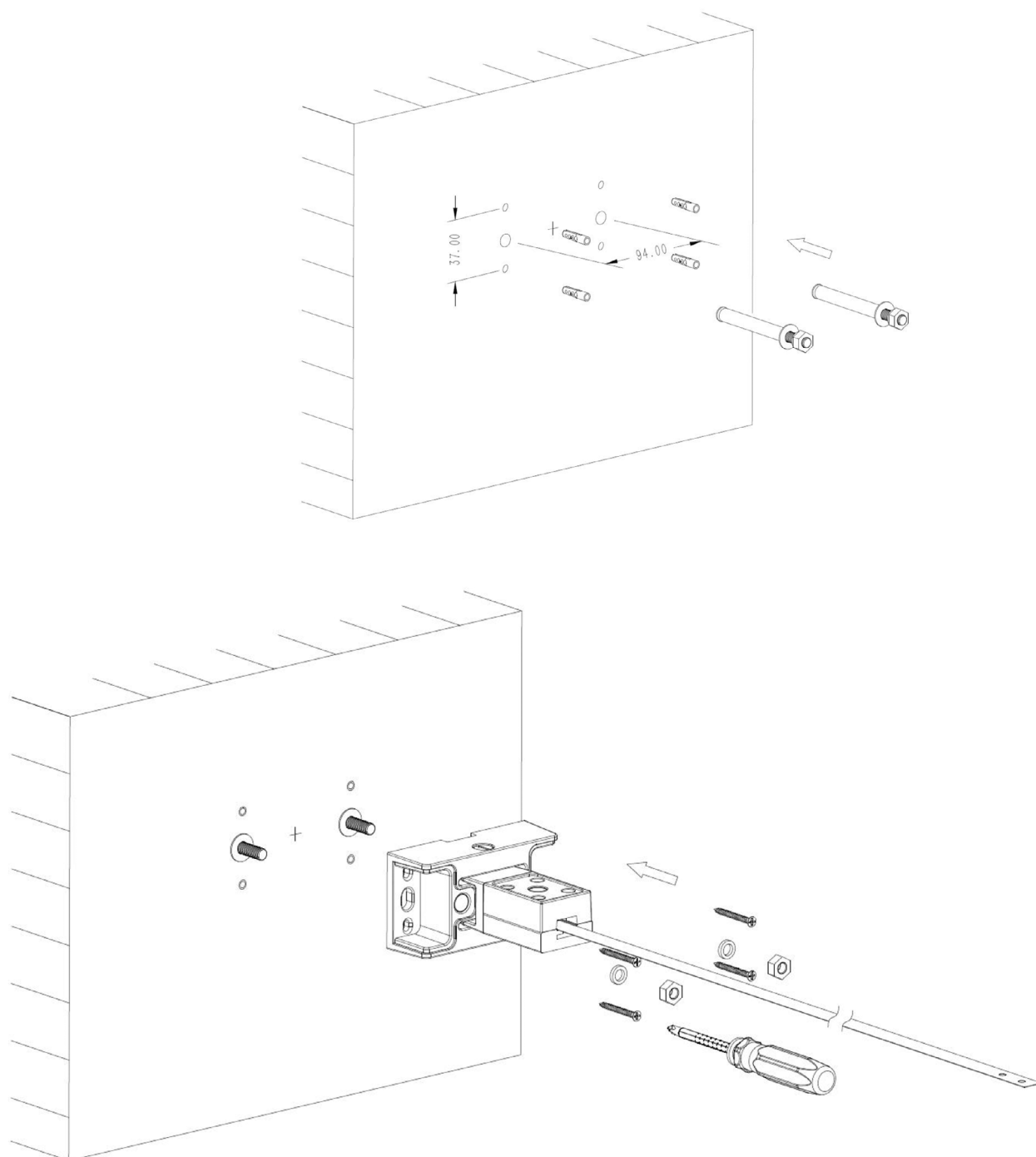
This diagram shows the front panel assembly in an exploded view. The main component is a rectangular front panel with a central circular opening and four smaller circular openings. It is shown being aligned with a larger rectangular base unit. Arrows indicate the direction of assembly: one arrow points up towards the top of the base unit, and another points down towards the bottom of the base unit. A third arrow points right towards the front panel, indicating its insertion into the base unit.

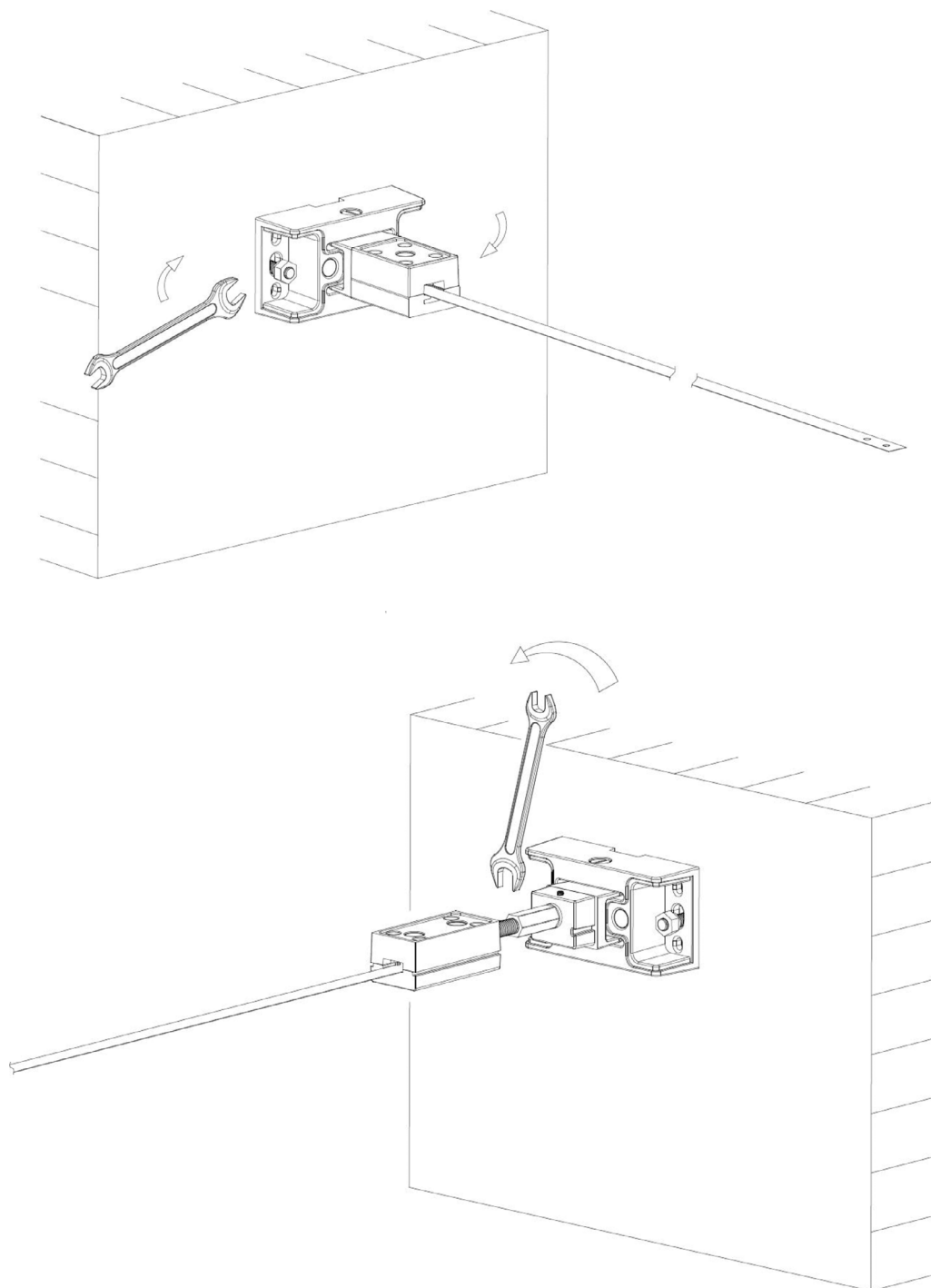






### 3. Installing the brackets to the wall





Components

