

## MEDIA LUMINOSIDAD

Ref: 33.180  
Ref: 33.181

6000°K  
4000°K

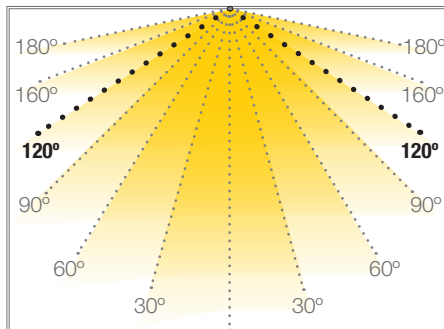
Tira flexible monocolor de 48V con 150 leds/metro.

### PCB de 10mm.

Requiere uso de led profile para disipación.

Uso diario máximo recomendado: 18h.  
Conexión máxima en circuito abierto: 30 m.  
Conexión máxima en circuito cerrado: 50 m.  
Vida útil: 50.000h\*

\*En función de la disipación del perfil, de las horas diarias trabajadas y de la temperatura externa ambiental de trabajo.



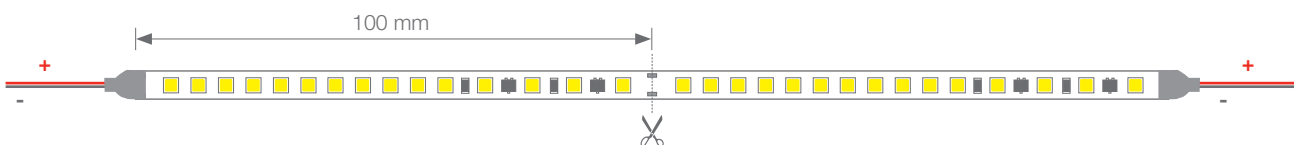
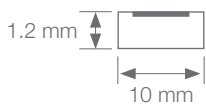
## CASTELLÓN

## TIRAS FLEXIBLES 48V



Potencia (W)	12.8W/m
Voltaje (V)	48V
Tipo Led	SMD2835
Lumens (6000°K)	1327 Lm/m
Lumens (4000°K)	1270 Lm/m
CRI	>75
Emisión de luz	120°
Estanqueidad (IP)	IP20
Nº leds/m	150
Medidas	10000x10x1,2 mm
Cortable	cada 100 mm
PCB	10 mm
Temperatura trabajo	-20°C / +40°C
Apto para	Interior
Embalaje	1 rollo/10m
Garantía	3 años

Aprobado por: 

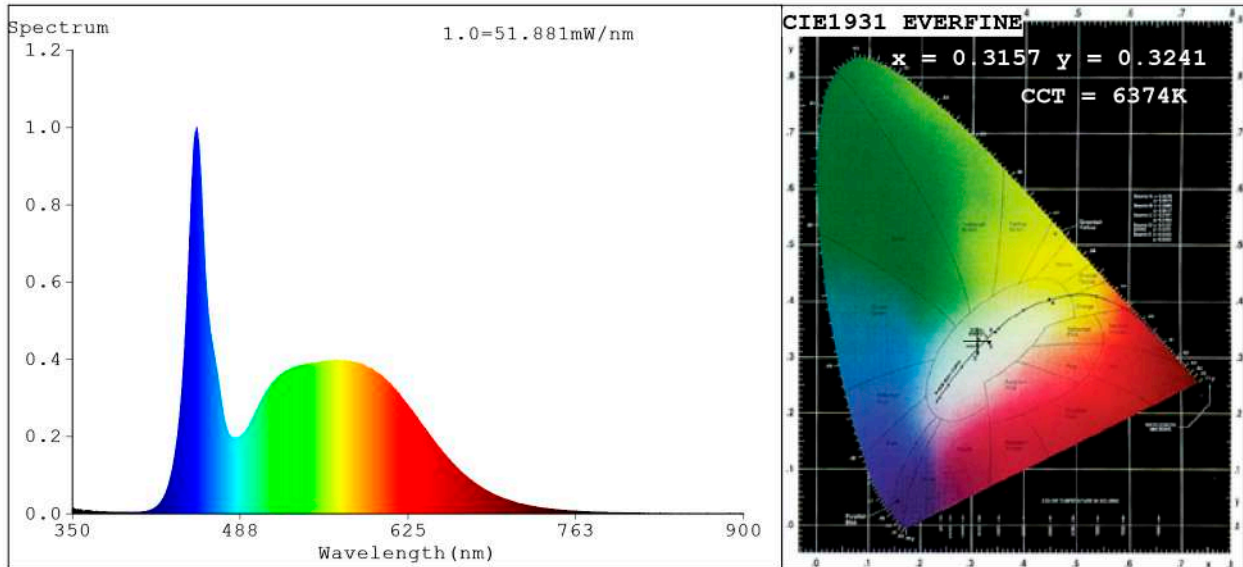


**BARCELONA**  
C/ Carles Buhigues, 13  
08420 Canovelles  
Info@luznegra.net  
Tel: +34 938 402 598

**MADRID**  
C/ Minas, 35-37  
28923 Alcorcón  
centro@luznegra.net  
Tel: +34 916 416 081

**PARIS**  
113 Avenue Joffre  
77450 Esbly  
france@luznegra.net  
Tel: +33 (0) 160 426 585

**Spectrum Test Report**



**Color Parameters:**

Chromaticity Coordinate: x=0.3157 y=0.3241/u'=0.2018 v'=0.4661  
 CCT=6374K (Duv=-0.0009) Dominant WL:Ld =484.7nm Purity=6.7%  
 Ratio:R=14.3% G=80.1% B=5.6%; Peak WL:Lp=451.9nm FWHM=18.8nm  
 Render Index:Ra=85.5 CRI=79.1 TM30:Rf=82 Rg=96  
 R1 =85 R2 =90 R3 =90 R4 =86 R5 =85 R6 =83 R7 =89  
 R8 =75 R9 =25 R10=74 R11=85 R12=58 R13=87 R14=95 R15=83

**Photo Parameters:**

Flux = 1348 lm Eff. : 107.78 lm/W Fe = 4.444 W Scotopic:3005 S/P:2.2289

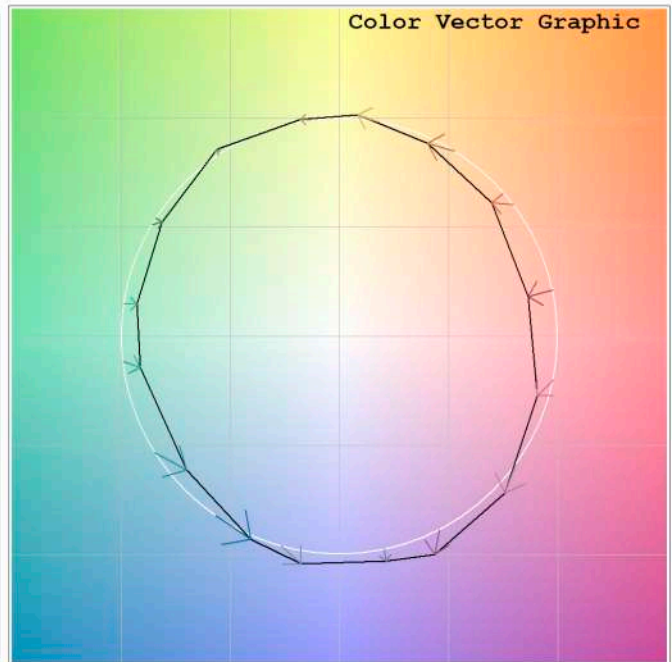
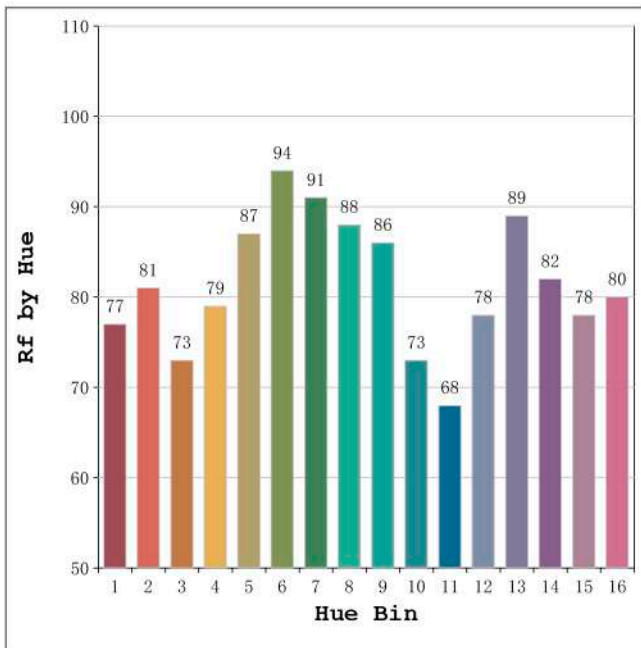
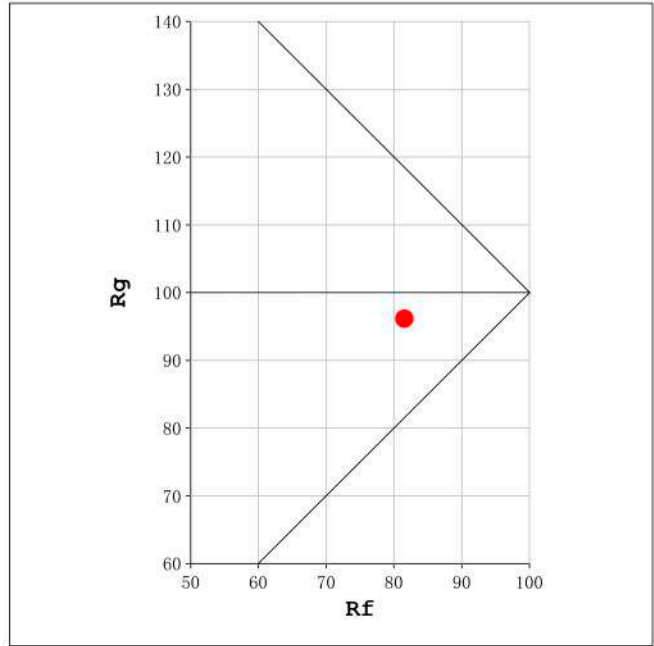
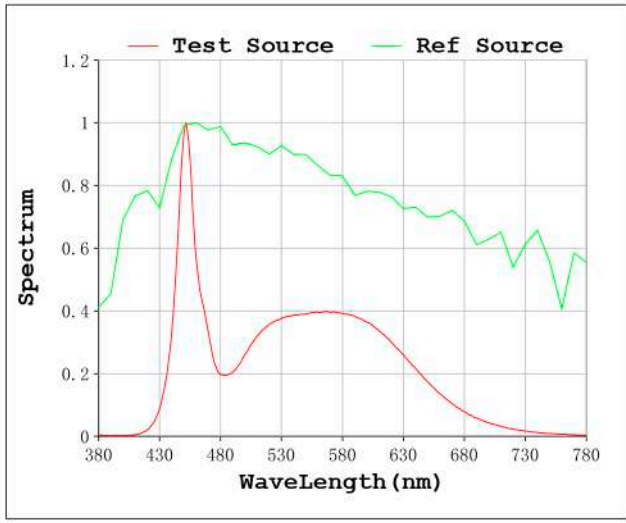
**Electrical parameters:**

V = 47.998 V I = 0.2606 A P = 12.51 W PF = 1.000

Status: Integral T = 423 ms Ip = 37146 (57%)

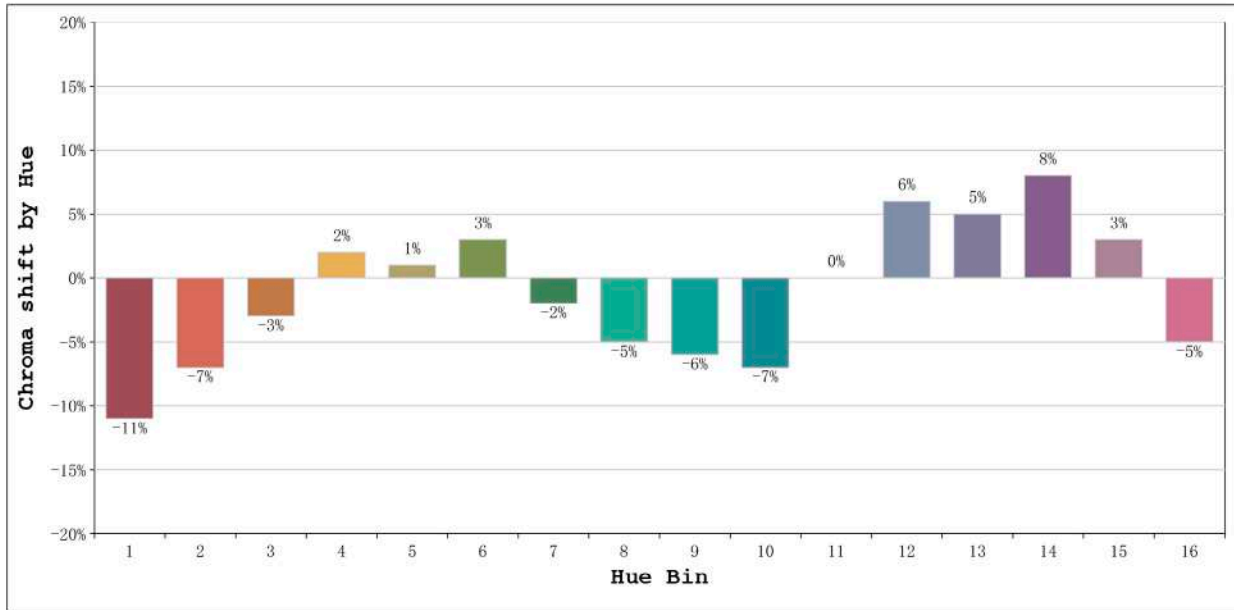
Model:Ecoled Castellón 6000K	Number:33.180
Tester:Sergio Carneros	Date:25-5-2021
Temperature:20Deg	Humidity:57%
Manufacturer:Luz Negra S.L	Remarks:100cm de tira flexible

Rf: 82      CCT: 6374 K      u': 0.2018  
Rg: 96      Duv: -0.0009      v': 0.4661



Model:Ecoled Castellón 6000K  
Tester:Sergio Carneros  
Temperature:20Deg  
Manufacturer:Luz Negra S.L

Number:33.180  
Date:25-5-2021  
Humidity:57%  
Remarks:100cm de tira flexible

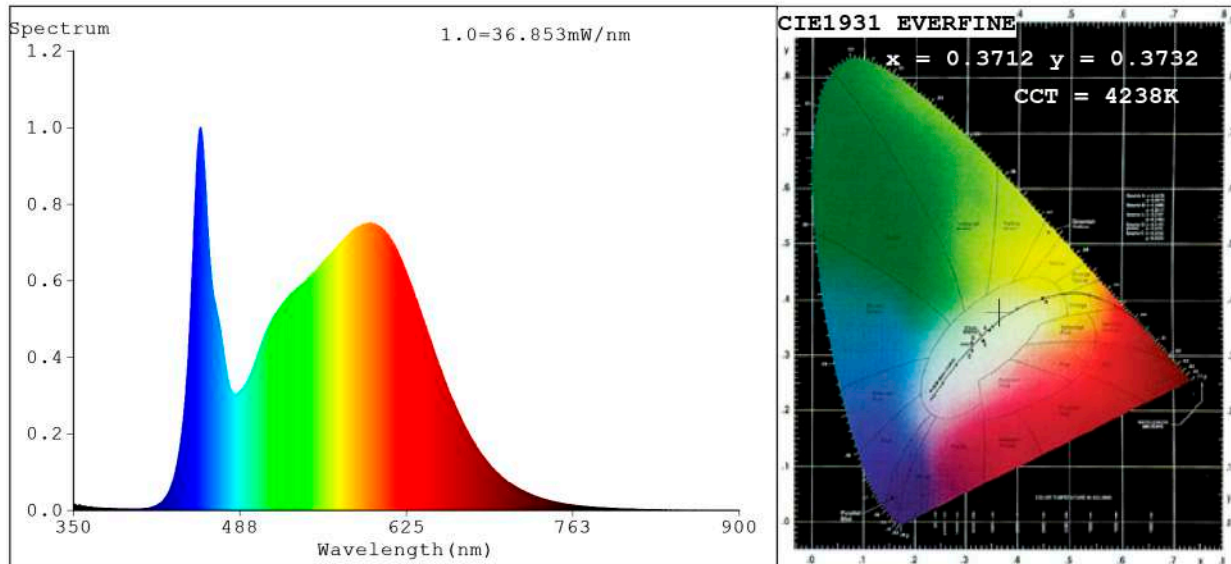


Hue Bin	Hue Angle	Rf	Graphic shift(%)	
			Chroma	Hue
1	0.0° - 22.5°	77	-11	0
2	22.5° - 45.0°	81	-7	6
3	45.0° - 67.5°	73	-3	12
4	67.5° - 90.0°	79	2	10
5	90.0° - 112.5°	87	1	5
6	112.5° - 135.0°	94	3	0
7	135.0° - 157.5°	91	-2	-3
8	157.5° - 180.0°	88	-5	0
9	180.0° - 202.5°	86	-6	4
10	202.5° - 225.0°	73	-7	15
11	225.0° - 247.5°	68	0	19
12	247.5° - 270.0°	78	6	10
13	270.0° - 292.5°	89	5	0
14	292.5° - 315.0°	82	8	-7
15	315.0° - 337.5°	78	3	-12
16	337.5° - 360.0°	80	-5	-8

Model:Ecoled Castellón 6000K  
Tester:Sergio Carneros  
Temperature:20Deg  
Manufacturer:Luz Negra S.L

Number:33.180  
Date:25-5-2021  
Humidity:57%  
Remarks:100cm de tira flexible

**Spectrum Test Report**



**Color Parameters:**

Chromaticity Coordinate: $x=0.3712$   $y=0.3732$ / $u'=0.2204$   $v'=0.4986$   
 CCT=4238K(Duv=0.0011) Dominant WL:Ld =577.4nm Purity=23.4%  
 Ratio:R=17.9% G=77.7% B=4.4%; Peak WL:Lp=455.0nm FWHM=23.5nm  
 Render Index:Ra=85.2 CRI=79.3 TM30:Rf=83 Rg=94  
 R1 =84 R2 =93 R3 =96 R4 =82 R5 =83 R6 =89 R7 =86  
 R8 =68 R9 =20 R10=82 R11=81 R12=60 R13=87 R14=99 R15=79

**Photo Parameters:**

Flux = 1652 lm Eff. : 132.57 lm/W Fe = 5.108 W Scotopic:3000.2 S/P:1.8163

**Electrical parameters:**

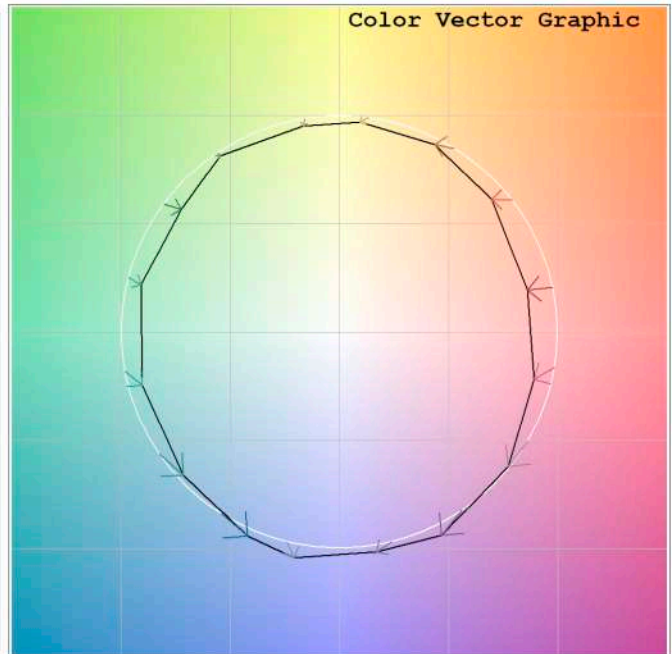
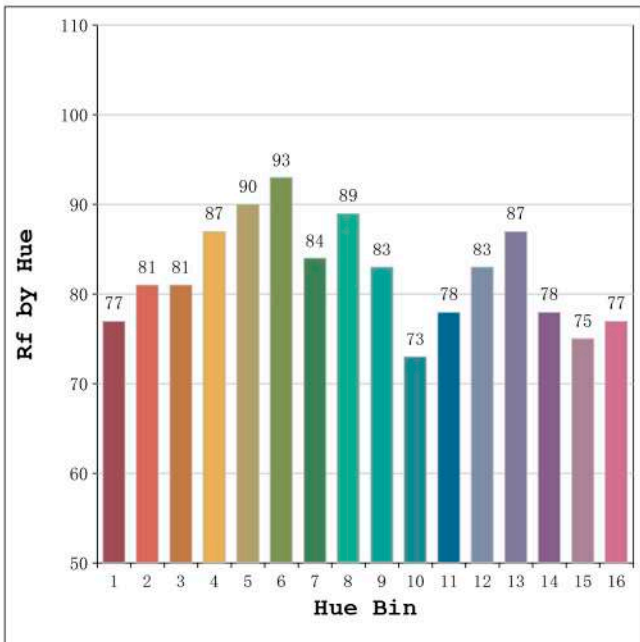
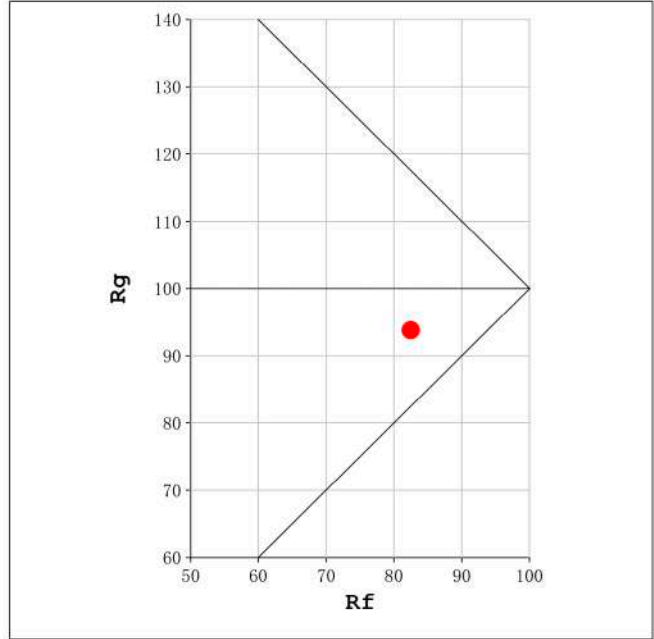
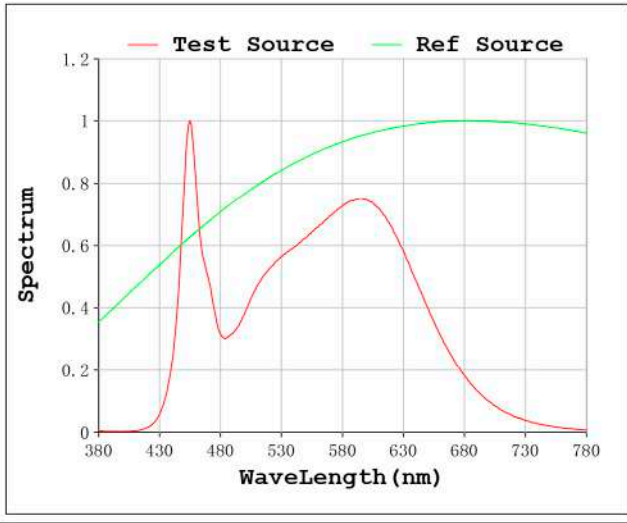
V = 47.998 V I = 0.2596 A P = 12.46 W PF = 1.000

Status: Integral T = 793 ms Ip = 50653 (77%)

Model:Ecoled Castellon 4000K	Number: 33.181
Tester:Sergio Carneros	Date:25-5-2021
Temperature:24Deg	Humidity:57%
Manufacturer:Luz Negra S.L	Remarks:100cm de tira flexible

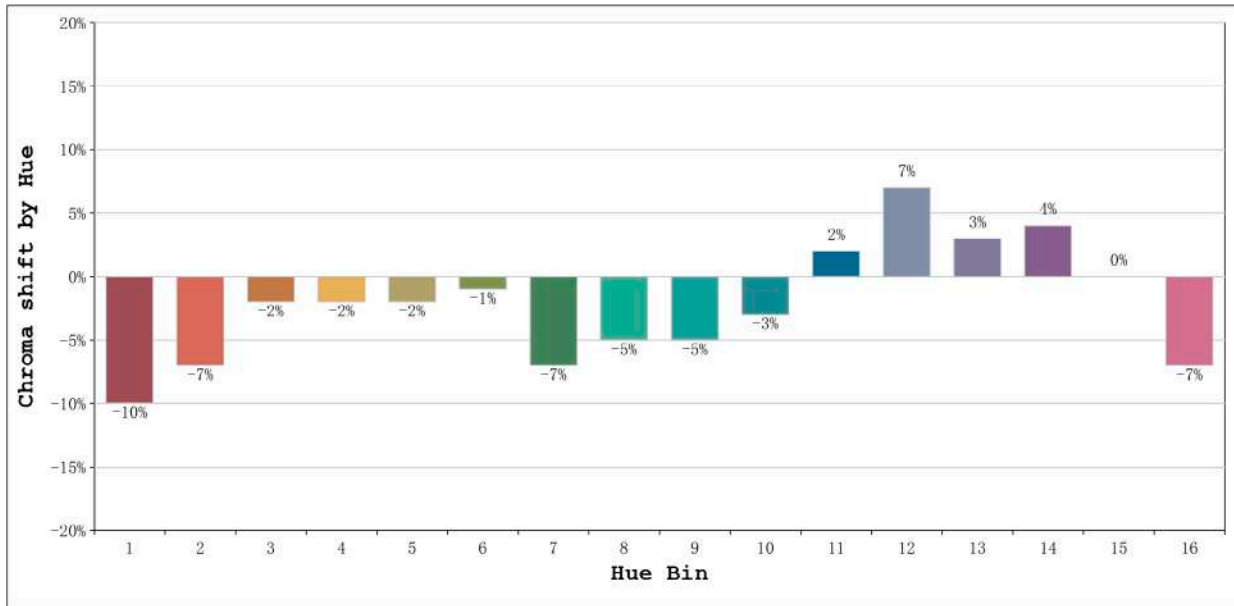


Rf: 83      CCT: 4238 K      u': 0.2204  
Rg: 94      Duv: 0.0011      v': 0.4986



Model:Ecoled Castellon 4000K  
Tester:Sergio Carneros  
Temperature:24Deg  
Manufacturer:Luz Negra S.L

Number: 33.181  
Date:25-5-2021  
Humidity:57%  
Remarks:100cm de tira flexible



Hue Bin	Hue Angle	Rf	Graphic shift (%)	
			Chroma	Hue
1	0.0° - 22.5°	77	-10	1
2	22.5° - 45.0°	81	-7	5
3	45.0° - 67.5°	81	-2	8
4	67.5° - 90.0°	87	-2	3
5	90.0° - 112.5°	90	-2	1
6	112.5° - 135.0°	93	-1	-1
7	135.0° - 157.5°	84	-7	-1
8	157.5° - 180.0°	89	-5	2
9	180.0° - 202.5°	83	-5	8
10	202.5° - 225.0°	73	-3	14
11	225.0° - 247.5°	78	2	16
12	247.5° - 270.0°	83	7	4
13	270.0° - 292.5°	87	3	-7
14	292.5° - 315.0°	78	4	-13
15	315.0° - 337.5°	75	0	-14
16	337.5° - 360.0°	77	-7	-6

Model:Ecoled Castellon 4000K  
Tester:Sergio Carneros  
Temperature:24Deg  
Manufacturer:Luz Negra S.L

Number: 33.181  
Date:25-5-2021  
Humidity:57%  
Remarks:100cm de tira flexible