

BAJA LUMINOSIDAD

Ref: 30.087	6000°K
Ref: 30.088	2800°K
Ref: 30.089	Azul
Ref: 30.090	Rojo
Ref: 30.091	Verde
Ref: 30.092	Ámbar

Tira flexible serie "BASIC"

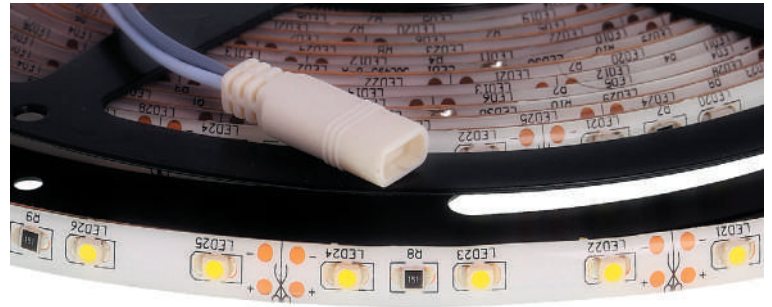
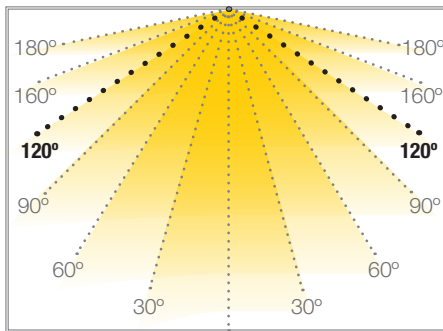
IP65 con 60 leds/metro 3528SMD.

PCB 10mm

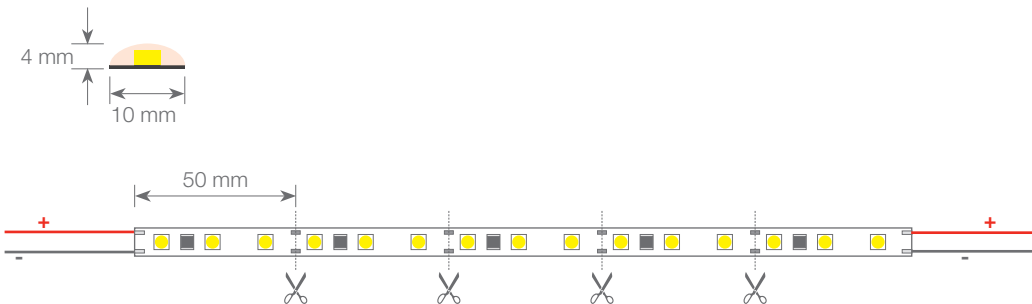
Uso diario máximo recomendado: 12h

Conexión máxima en circuito abierto: 7.5m

Conexión máxima en circuito cerrado: 15m



Potencia (W)	4.8W/m
Voltaje (V)	12V
Tipo Led	SMD3528
Lumens (6000°K)	438 Lm/m
Lumens (2800°K)	377 Lm/m
Lumens (Azul)	61 Lm/m
Lumens (Rojo)	46 Lm/m
Lumens (Verde)	240 Lm/m
Lumens (Ámbar)	53 Lm/m
CRI	>85
Emisión de luz	120°
Estanqueidad (IP)	IP65
Nº leds/m	60
Medidas	5000x10x4mm
Cortable	cada 50mm
PCB	10mm
Temperatura trabajo	-20°C / +40°C
Apto para	interior/exterior
Embalaje	1 rollo/5m
Garantía	2 años



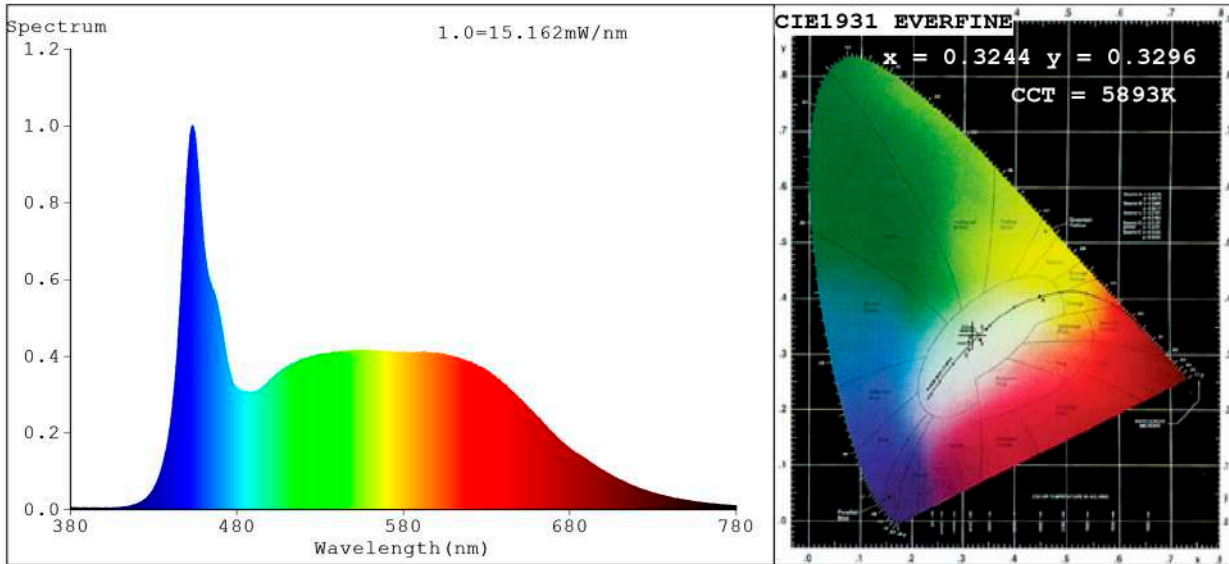
Aprobado por: 

BARCELONA
C/ Carles Buhigues, 13
08420 Canovelles
Info@luznegra.net
Tel: +34 938 402 598

MADRID
C/ Adaptación, 27
28906 Getafe
centro@luznegra.net
Tel: +34 916 416 081

PARIS
113 Avenue Joffre
77450 Esbly
france@luznegra.net
Tel: +33 (0) 160 426 585

Spectrum Test Report



Color Parameters:

Chromaticity Coordinate: $x=0.3244$ $y=0.3296$ / $u'=0.2057$ $v'=0.4704$
 CCT=5893K (Duv=-0.0022) Dominant WL:Ld =486.2nm Purity=3.3%
 Ratio:R=16.4% G=77.1% B=6.5%;; Peak WL:Lp=453.3nm FWHM=24.5nm
 Render Index:Ra=93.8 CRI=91.6 TM30:Rf=89 Rg=99 Lav=550.1nm
 R1 =95 R2 =98 R3 =97 R4 =93 R5 =93 R6 =92 R7 =92
 R8 =89 R9 =77 R10=96 R11=94 R12=68 R13=98 R14=99 R15=95

Photo Parameters:

Flux = 438.8 lm Eff. : 97.25 lm/W Fe = 1.552 W Scotopic:1010.5 S/P:2.3028

Electrical parameters:

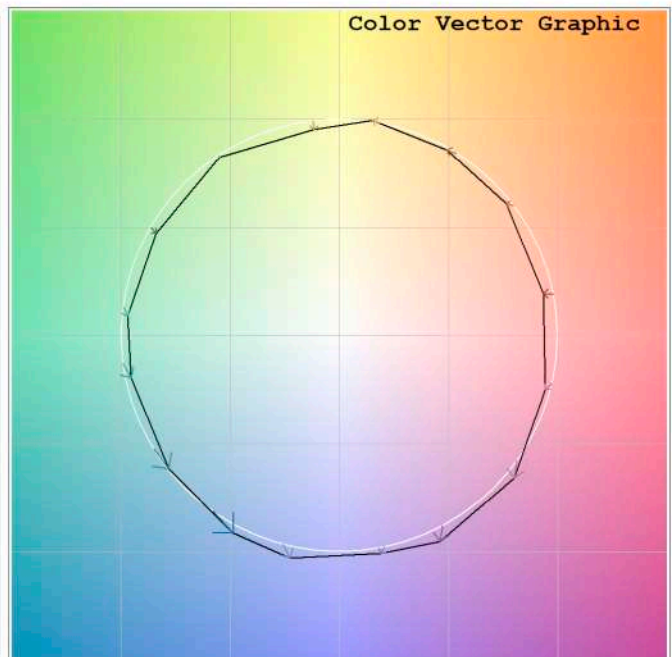
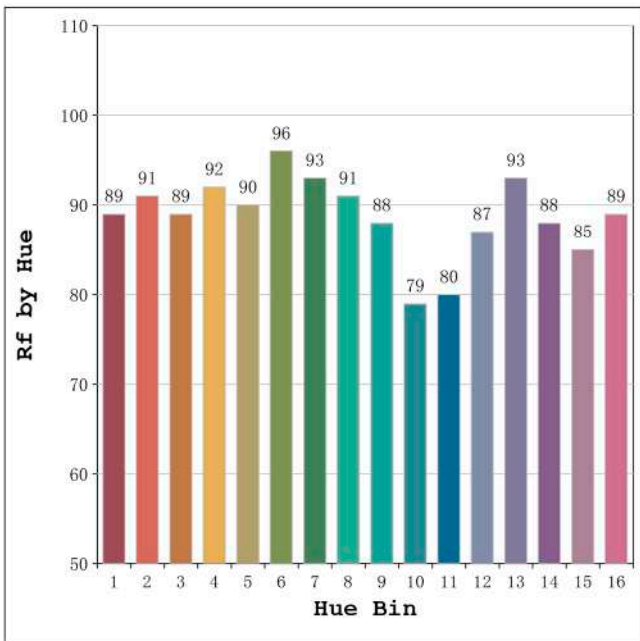
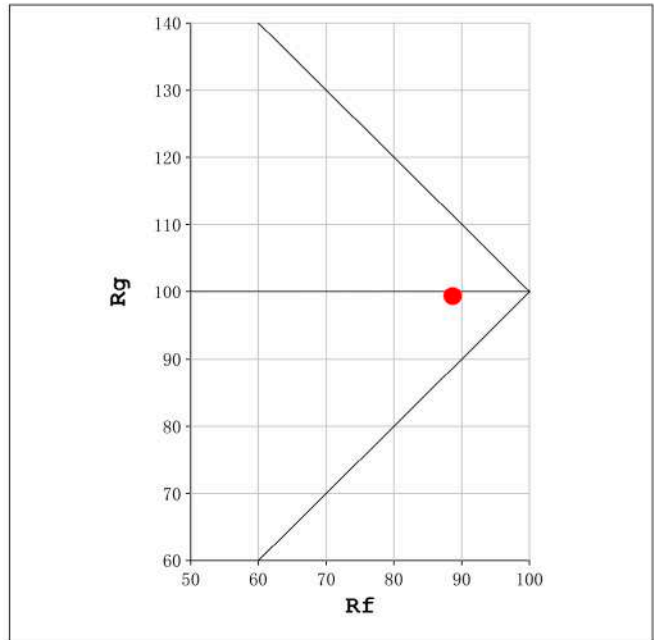
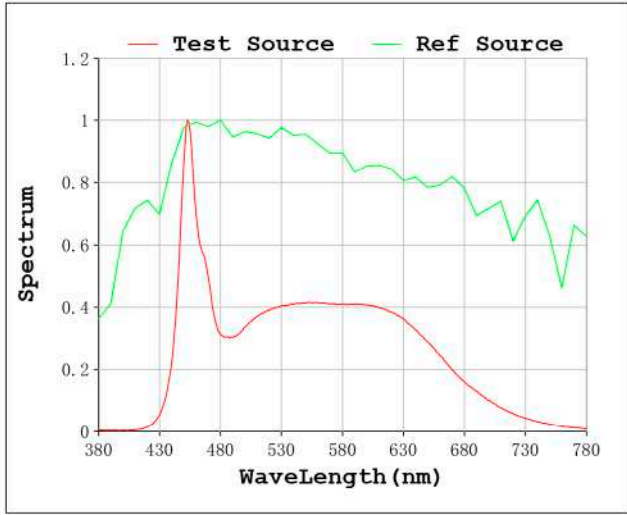
V = 11.998 V I = 0.3761 A P = 4.512 W PF = 1.000

Status: Integral T = 2000 ms Ip = 45537 (69%)

Model:Ecoled Rubi pro 6000K
 Tester:Sergio Carneros
 Temperature:25Deg
 Manufacturer:Luz Negra.S.L

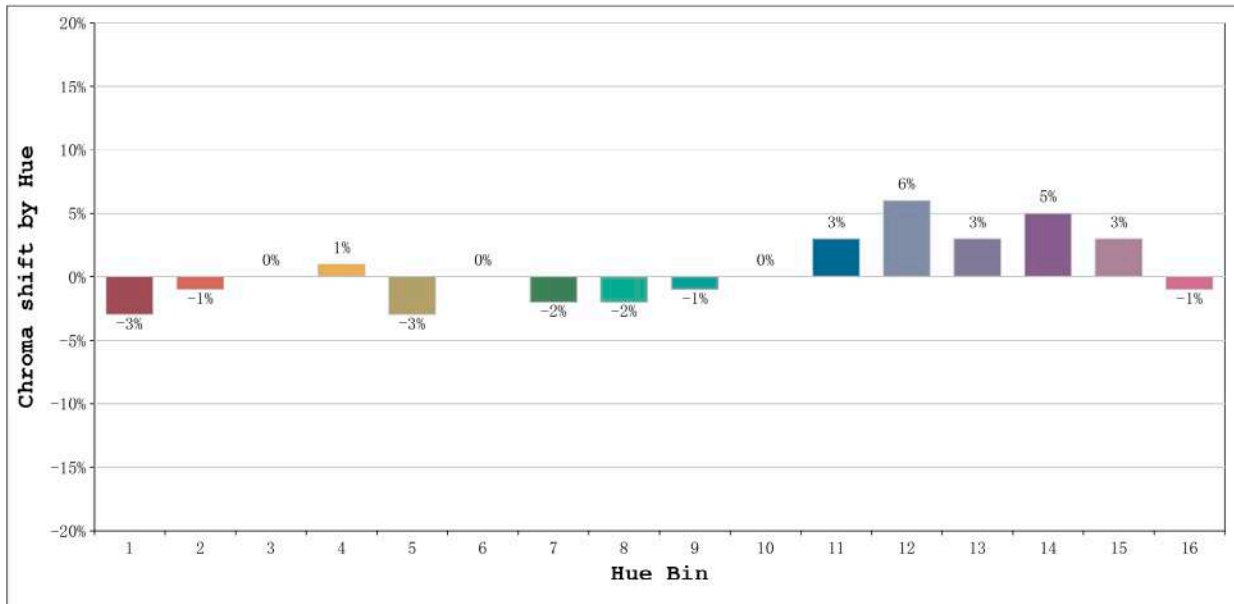
Number: 30.087
 Date:26-5-2021
 Humidity:57%
 Remarks:100cm Tira flexible

Rf: 89 CCT: 5893 K u': 0.2057
Rg: 99 Duv: -0.0022 v': 0.4704



Model:Ecoled Rubi pro 6000K
Tester:Sergio Carneros
Temperature:25Deg
Manufacturer:Luz Negra.S.L

Number: 30.087
Date:26-5-2021
Humidity:57%
Remarks:100cm Tira flexible

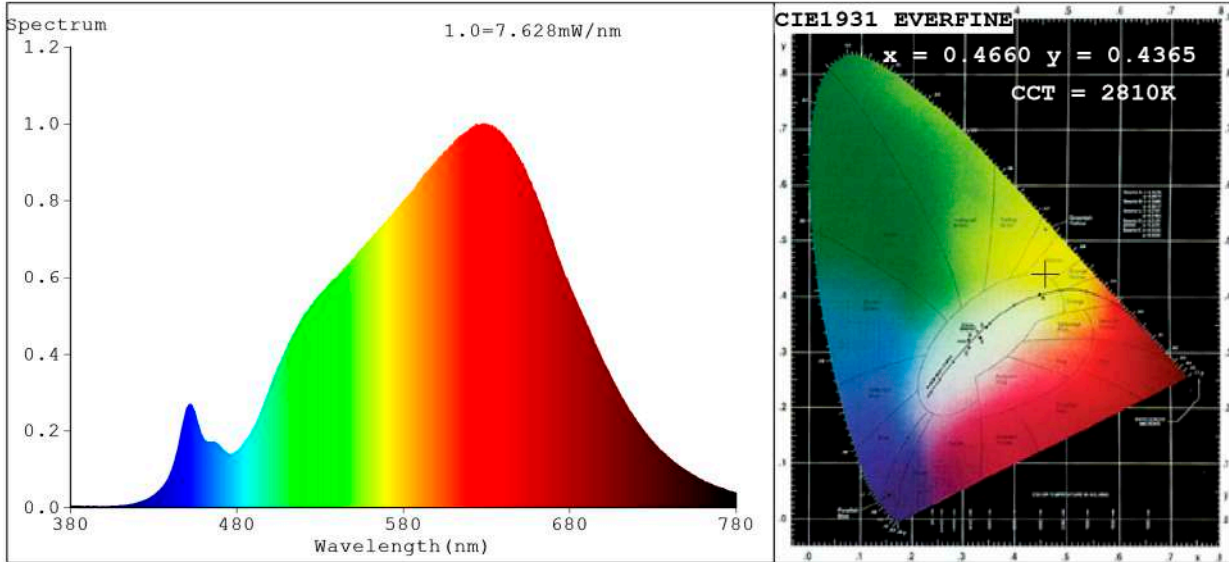


Hue Bin	Hue Angle	Rf	Graphic shift(%)	
			Chroma	Hue
1	0.0° - 22.5°	89	-3	1
2	22.5° - 45.0°	91	-1	3
3	45.0° - 67.5°	89	0	5
4	67.5° - 90.0°	92	1	4
5	90.0° - 112.5°	90	-3	0
6	112.5° - 135.0°	96	0	0
7	135.0° - 157.5°	93	-2	1
8	157.5° - 180.0°	91	-2	4
9	180.0° - 202.5°	88	-1	7
10	202.5° - 225.0°	79	0	11
11	225.0° - 247.5°	80	3	13
12	247.5° - 270.0°	87	6	4
13	270.0° - 292.5°	93	3	-1
14	292.5° - 315.0°	88	5	-4
15	315.0° - 337.5°	85	3	-6
16	337.5° - 360.0°	89	-1	-2

Model:Ecoled Rubi pro 6000K
 Tester:Sergio Carneros
 Temperature:25Deg
 Manufacturer:Luz Negra.S.L

Number: 30.087
 Date:26-5-2021
 Humidity:57%
 Remarks:100cm Tira flexible

Spectrum Test Report



Color Parameters:

Chromaticity Coordinate: $x=0.4660$ $y=0.4365$ / $u'=0.2551$ $v'=0.5377$
 CCT=2810K (Duv=0.0088) Dominant WL:Ld =581.2nm Purity=70.9%
 Ratio:R=24.6% G=73.5% B=1.9%;;Peak WL:Lp=628.6nm FWHM=167.2nm
 Render Index:Ra=89.4 CRI=85.0 TM30:Rf=89 Rg=92 Lav=608.8nm
 R1 =89 R2 =91 R3 =93 R4 =91 R5 =87 R6 =88 R7 =96
 R8 =82 R9 =54 R10=78 R11=90 R12=68 R13=88 R14=95 R15=84

Photo Parameters:

Flux = 377.1 lm Eff. : 92.43 lm/W Fe = 1.290 W Scotopic:465.12 S/P:1.2335

Electrical parameters:

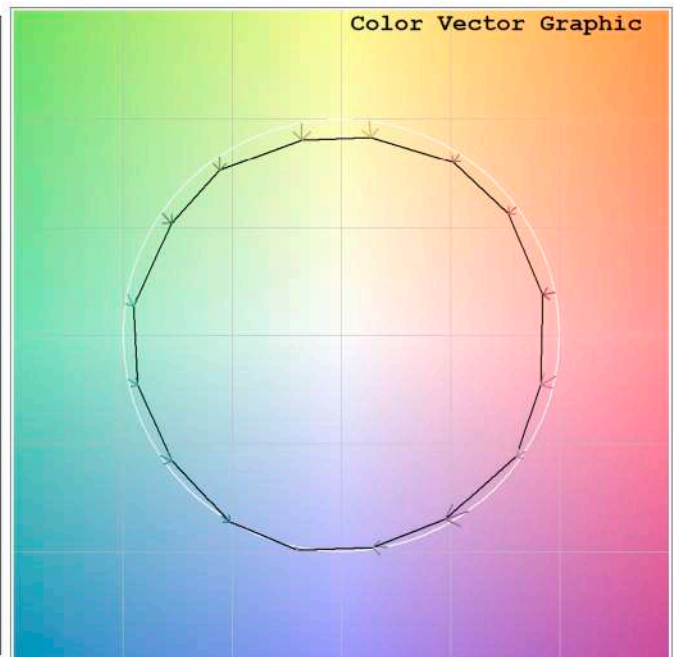
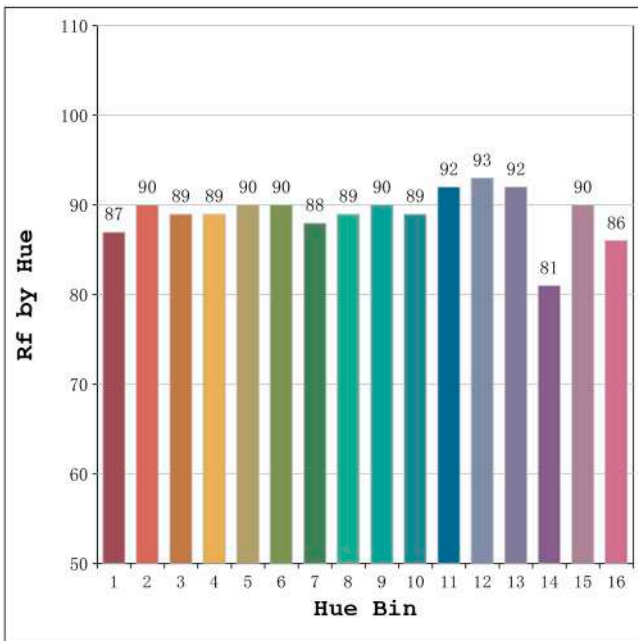
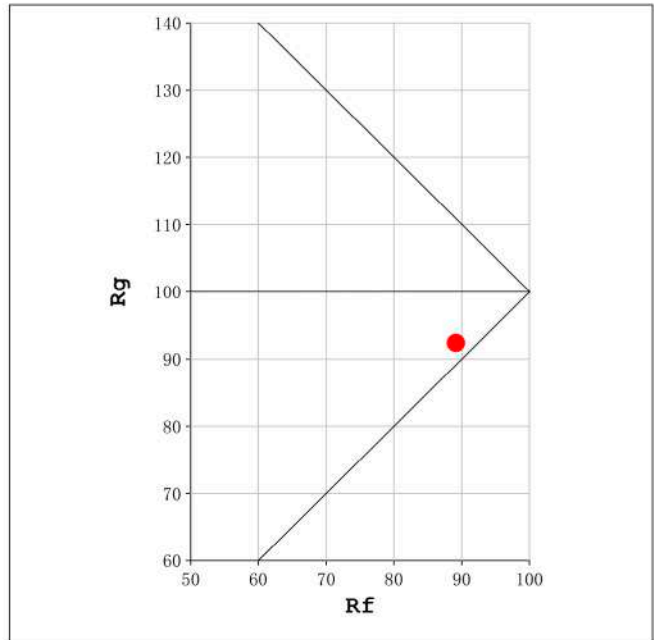
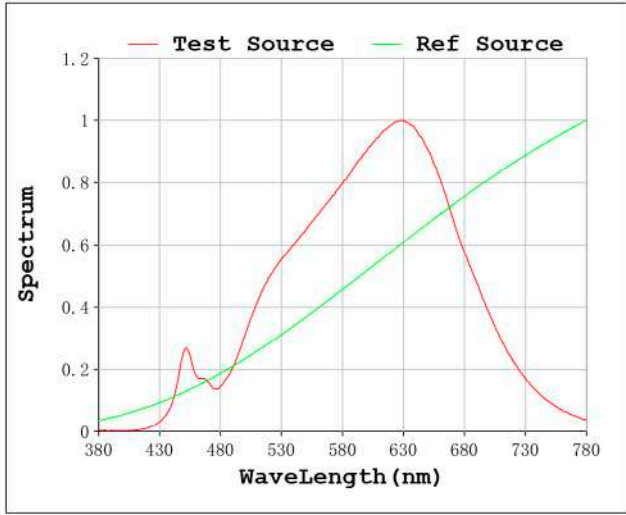
V = 11.998 V I = 0.3400 A P = 4.079 W PF = 1.000

Status: Integral T = 4015 ms Ip = 52259 (80%)

Model:Ecoled Rubi pro 2800K
 Tester:Sergio Carneros
 Temperature:25Deg
 Manufacturer:Luz Negra.S.L

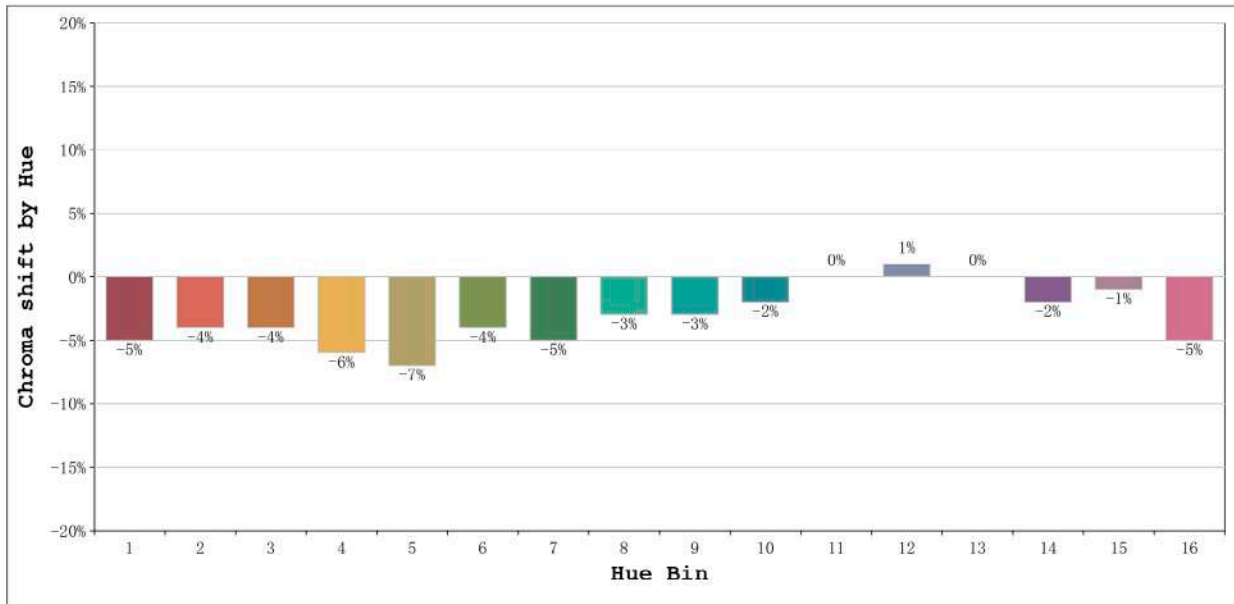
Number:30.088
 Date:26-5-2021
 Humidity:57%
 Remarks:100cm Tira flexible

Rf: 89 CCT: 2810 K u': 0.2551
Rg: 92 Duv: 0.0088 v': 0.5377



Model:Ecoled Rubi pro 2800K
Tester:Sergio Carneros
Temperature:25Deg
Manufacturer:Luz Negra.S.L

Number:30.088
Date:26-5-2021
Humidity:57%
Remarks:100cm Tira flexible

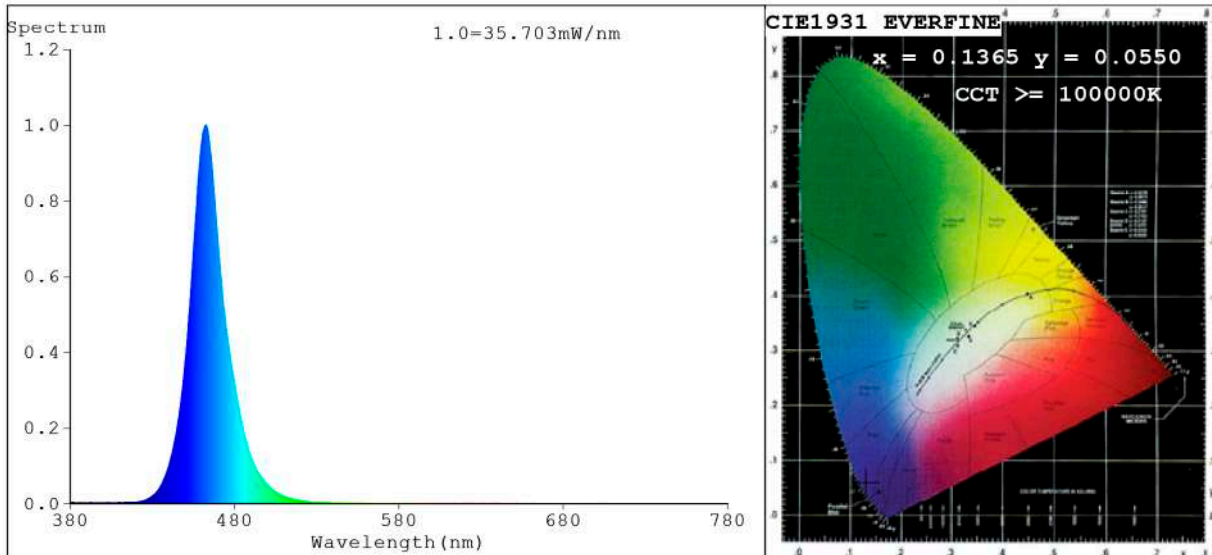


Hue Bin	Hue Angle	Rf	Graphic shift(%)	
			Chroma	Hue
1	0.0° - 22.5°	87	-5	0
2	22.5° - 45.0°	90	-4	0
3	45.0° - 67.5°	89	-4	0
4	67.5° - 90.0°	89	-6	-1
5	90.0° - 112.5°	90	-7	1
6	112.5° - 135.0°	90	-4	3
7	135.0° - 157.5°	88	-5	2
8	157.5° - 180.0°	89	-3	5
9	180.0° - 202.5°	90	-3	4
10	202.5° - 225.0°	89	-2	5
11	225.0° - 247.5°	92	0	5
12	247.5° - 270.0°	93	1	2
13	270.0° - 292.5°	92	0	-6
14	292.5° - 315.0°	81	-2	-10
15	315.0° - 337.5°	90	-1	-3
16	337.5° - 360.0°	86	-5	-4

Model:Ecoled Rubi pro 2800K
 Tester:Sergio Carneros
 Temperature:25Deg
 Manufacturer:Luz Negra.S.L

Number:30.088
 Date:26-5-2021
 Humidity:57%
 Remarks:100cm Tira flexible

Spectrum Test Report



Color Parameters:

Chromaticity Coordinate: $x=0.1365$ $y=0.0550$ $u'=0.1612$ $v'=0.1462$
 CCT=100000K (Duv=0.1696) Dominant WL:Ld =467.3nm Purity=97.2%
 Ratio:R=0.3% G=14.3% B=85.4%;;Peak WL:Lp=462.5nm FWHM=21.7nm
 Render Index:Ra=0.1 CRI=0.0 TM30:Rf=0 Rg=-60 Lav=463.9nm
 R1 =0 R2 =0 R3 =0 R4 =0 R5 =1 R6 =0 R7 =0
 R8 =0 R9 =0 R10=0 R11=0 R12=0 R13=0 R14=0 R15=0

Photo Parameters:

Flux = 61.05 lm Eff. : 16.04 lm/W Fe = 959.9 mW Scotopic:1004.6 S/P:16.456

Electrical parameters:

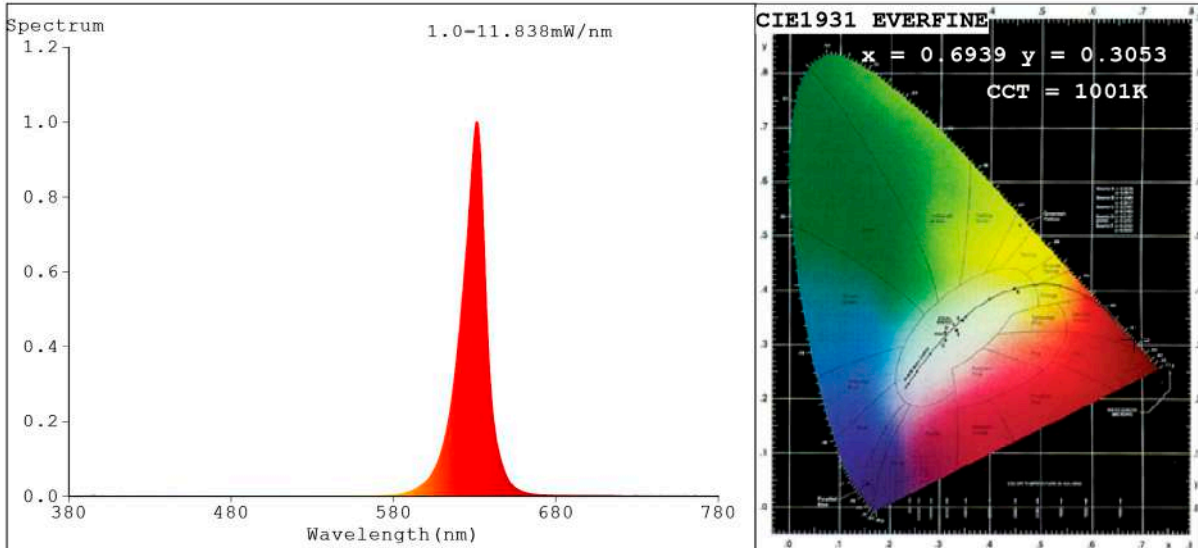
V = 11.998 V I = 0.3173 A P = 3.807 W PF = 1.000

Status: Integral T = 894 ms Ip = 51624 (79%)

Model:Ecoled Rubi pro Azul
 Tester:Sergio Carneros
 Temperature:25Deg
 Manufacturer:Luz Negra.S.L

Number: 30.089
 Date:26-5-2021
 Humidity:57%
 Remarks:100cm Tira flexible

Spectrum Test Report



Color Parameters:

Chromaticity Coordinate: $x=0.6939$ $y=0.3053$ $u'=0.5261$ $v'=0.5208$
 CCT=1001K (Duv=-0.0786) Dominant WL:Ld =621.6nm Purity=99.8%
 Ratio:R=95.7% G=4.3% B=0.0%; Peak WL:Lp=631.6nm FWHM=15.6nm
 Render Index:Ra=27.3 CRI=33.0 TM30:Rf=13 Rg=-1 Lav=629.2nm
 R1 =8 R2 =79 R3 =32 R4 =0 R5 =3 R6 =90 R7 =6
 R8 =0 R9 =0 R10=72 R11=0 R12=79 R13=31 R14=60 R15=0

Photo Parameters:

Flux = 46.38 lm Eff. : 11.06 lm/W Fe = 229.2 mW Scotopic:2.5878 S/P:0.05579

Electrical parameters:

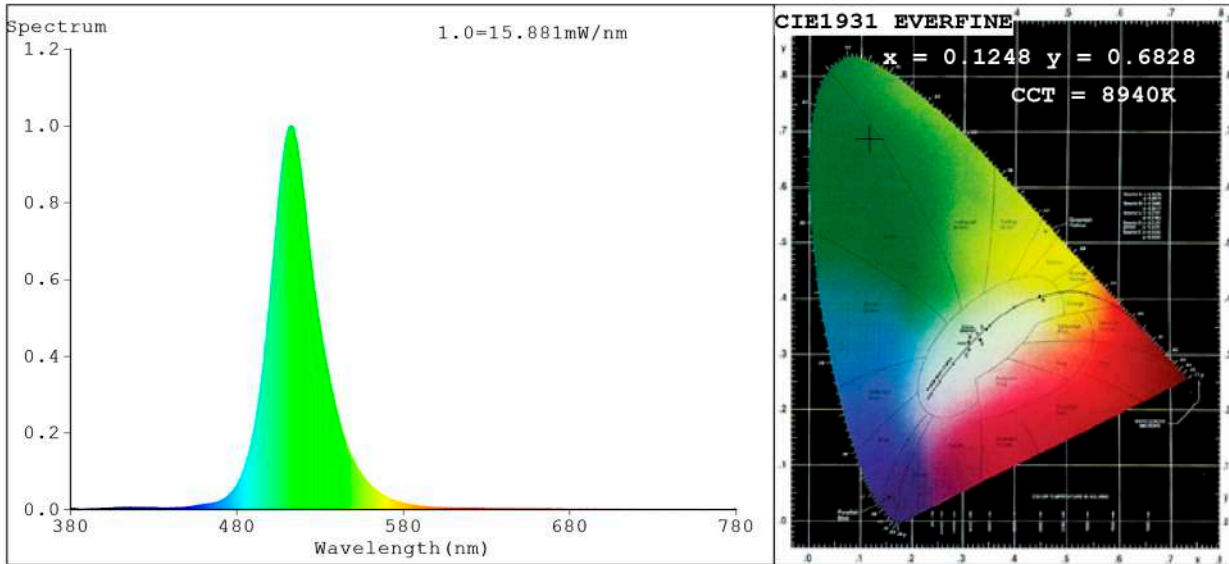
V = 11.998 V I = 0.3496 A P = 4.195 W PF = 1.000

Status: Integral T = 1768 ms Ip = 33821 (52%)

Model:Ecoled Rubi pro rojo
 Tester:Sergio Carneros
 Temperature:27Deg
 Manufacturer:Luz Negra

Number: 30.090
 Date:26-5-2021
 Humidity:57%
 Remarks:100cm de tira flexible

Spectrum Test Report



Color Parameters:

Chromaticity Coordinate: $x=0.1248$ $y=0.6828$ $u'=0.0456$ $v'=0.5615$
 CCT=8940K (Duv=0.1657) Dominant WL: $L_d = 515.8\text{nm}$ Purity=72.1%
 Ratio: R=0.3% G=94.5% B=5.2%;; Peak WL: $L_p = 512.3\text{nm}$ FWHM=30.4nm
 Render Index: $R_a = 0.2$ CRI=3.0 TM30: $R_f = 1$ $R_g = 9$ $L_{av} = 515.0\text{nm}$
 R1 = 0 R2 = 0 R3 = 0 R4 = 0 R5 = 0 R6 = 0 R7 = 1
 R8 = 0 R9 = 0 R10 = 0 R11 = 0 R12 = 0 R13 = 0 R14 = 41 R15 = 0

Photo Parameters:

Flux = 240.5 lm Eff. : 58.73 lm/W $F_e = 586.9$ mW Scotopic: 862.4 S/P: 3.5857

Electrical parameters:

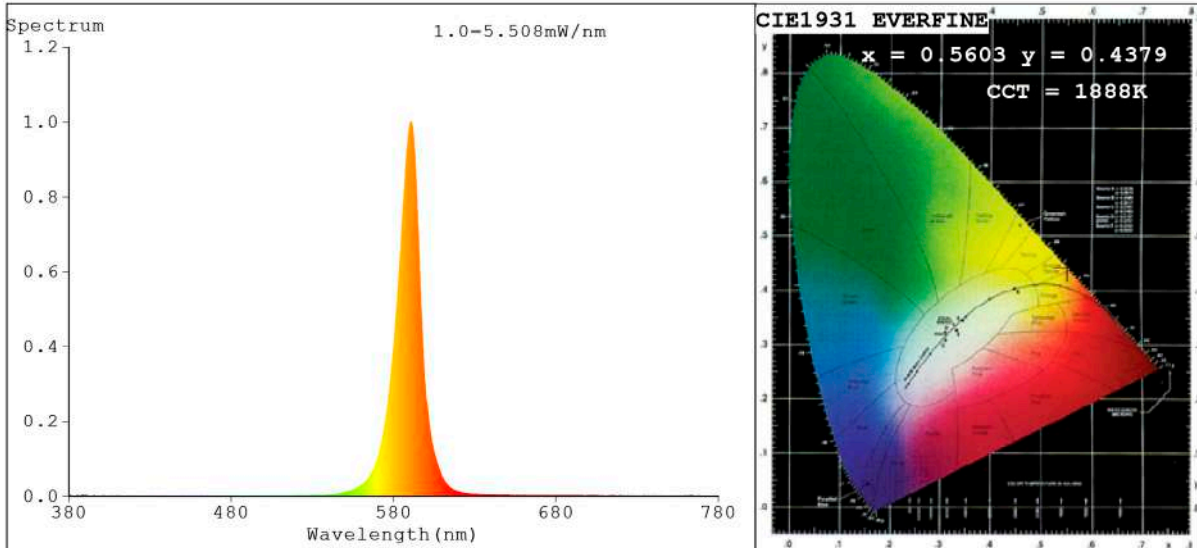
V = 11.998 V I = 0.3413 A P = 4.095 W PF = 1.000

Status: Integral T = 1000 ms $I_p = 32512$ (50%)

Model: Ecoled Rubi pro verde
 Tester: Sergio Carneros
 Temperature: 25Deg
 Manufacturer: Luz Negra.S.L

Number: 30.091
 Date: 26-5-2021
 Humidity: 57%
 Remarks: 100cm Tira flexible

Spectrum Test Report



Color Parameters:

Chromaticity Coordinate: $x=0.5603$ $y=0.4379$ / $u'=0.3142$ $v'=0.5524$
 CCT=1888K (Duv=0.0085) Dominant WL: $\lambda_d = 587.7$ nm Purity=99.6%
 Ratio: R=7.0% G=93.0% B=0.0% ; Peak WL: $\lambda_p = 590.9$ nm FWHM=15.0nm
 Render Index: Ra=11.1 CRI=10.5 TM30: Rf=0 Rg=5
 R1 =0 R2 =43 R3 =23 R4 =0 R5 =0 R6 =22 R7 =0
 R8 =0 R9 =0 R10=11 R11=0 R12=0 R13=0 R14=48 R15=0

Photo Parameters:

Flux = 53.11 lm Eff. : 12.84 lm/W $F_e = 102.7$ mW Scotopic:14.999 S/P:0.28243

Electrical parameters:

V = 11.998 V I = 0.3448 A P = 4.137 W PF = 1.000

Status: Integral T = 5000 ms $I_p = 36191$ (55%)

Model: Ecoled Rubi Ambar pro
 Tester: Sergio Carneros
 Temperature: 25Deg
 Manufacturer: Luz Negra S.L.

Number: 30.092
 Date: 26-5-2021
 Humidity: 57%
 Remarks: 100cm de tira flexible