

MEDIA LUMINOSIDAD

Ref: 30.013
Ref: 30.014

6000°K
2800°K

Tira flexible serie "BASIC"

IP20 con 144 leds/metro 3528SMD.

Requiere uso de led profile para disipación.

PCB 10mm

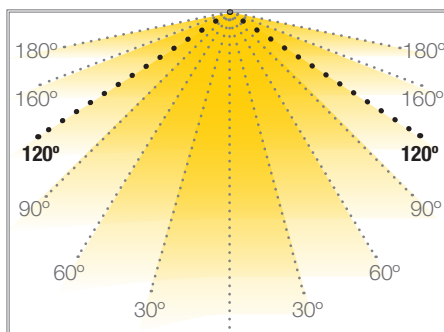
Uso diario máximo recomendado: 12h

Conexión máxima en circuito abierto: 5m

Conexión máxima en circuito cerrado: 10m

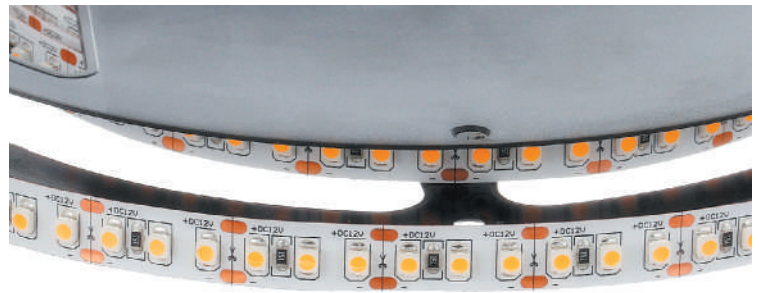
Vida útil: 30.000h*

*En función de la disipación del perfil, de las horas diarias trabajadas y de la temperatura externa ambiental de trabajo.



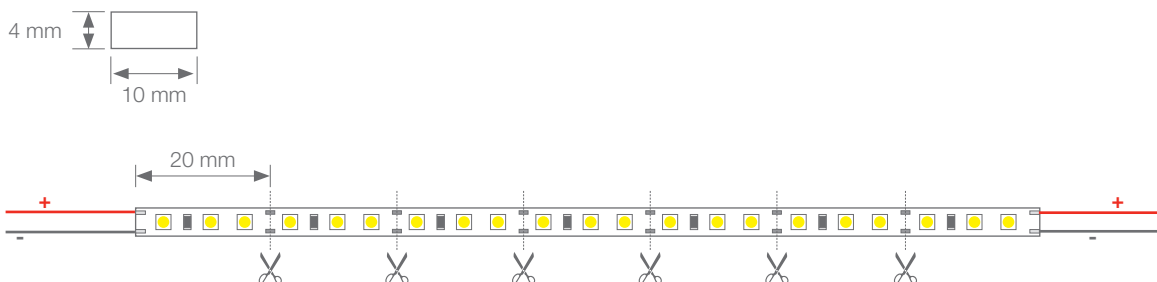
TOPACIO

TIRAS FLEXIBLES



| | |
|---------------------|---------------|
| Potencia (W) | 11.52W/m |
| Voltaje (V) | 12V |
| Tipo Led | SMD3528 |
| Lumens (6000°K) | 864 Lm/m |
| Lumens (2800°K) | 682 Lm/m |
| CRI | >45 |
| Emisión de luz | 120° |
| Estanqueidad (IP) | IP20 |
| Nº leds/m | 144 |
| Medidas | 5000x10x4mm |
| Cortable | cada 20mm |
| PCB | 10mm |
| Temperatura trabajo | -20°C / +40°C |
| Apto para | interior |
| Embalaje | 1 rollo/5m |
| Garantía | 2 años |

Aprobado por: 

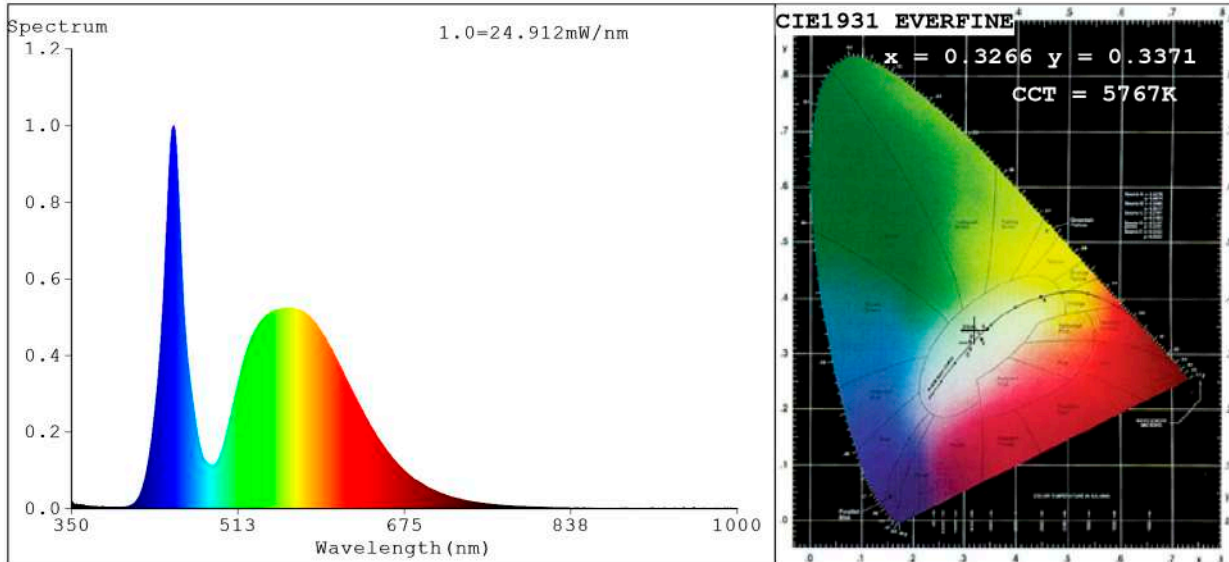


BARCELONA
C/ Carles Buhigues, 13
08420 Canovelles
Info@luznegra.net
Tel: +34 938 402 598

MADRID
C/ Minas, 35-37
28923 Alcorcón
centro@luznegra.net
Tel: +34 916 416 081

PARIS
113 Avenue Joffre
77450 Esbly
france@luznegra.net
Tel: +33 (0) 160 426 585

Spectrum Test Report



Color Parameters:

Chromaticity Coordinate: $x=0.3266$ $y=0.3371$ / $u'=0.2044$ $v'=0.4746$
 CCT=5767K (Duv=0.0006) Dominant WL:Ld =499.0nm Purity=2.1%
 Ratio:R=13.3% G=83.1% B=3.7% ; Peak WL:Lp=449.8nm FWHM=21.4nm
 Render Index:Ra=73.3 CRI=64.5 TM30:Rf=71 Rg=94
 R1 =72 R2 =77 R3 =79 R4 =74 R5 =72 R6 =68 R7 =82
 R8 =61 R9 =0 R10=44 R11=71 R12=43 R13=72 R14=88 R15=68

Photo Parameters:

Flux = 780.2 lm Eff. : 84.88 lm/W Fe = 2.419 W Scotopic:1497.8 S/P:1.9197

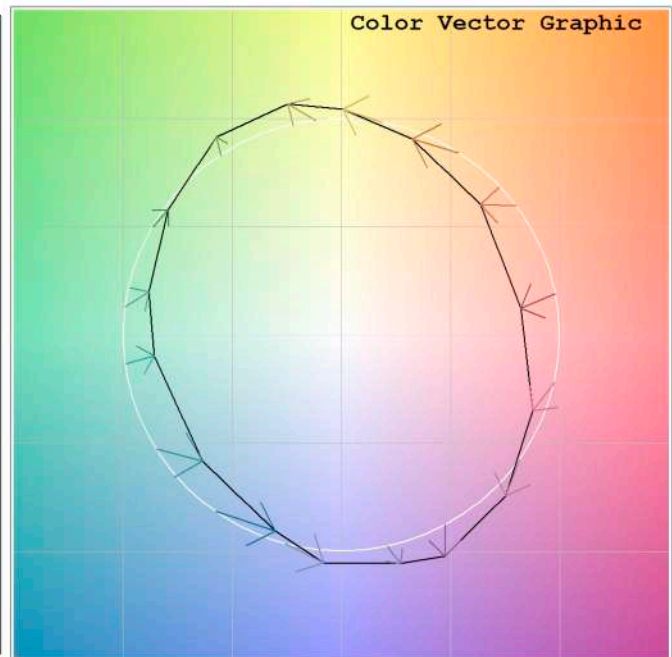
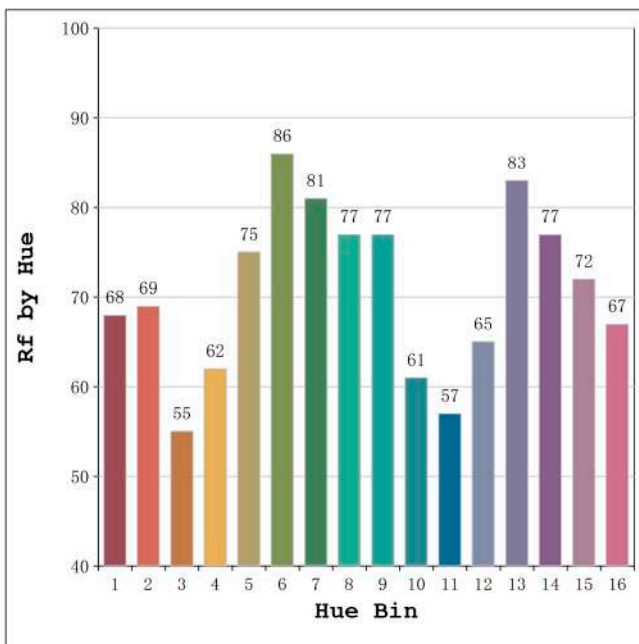
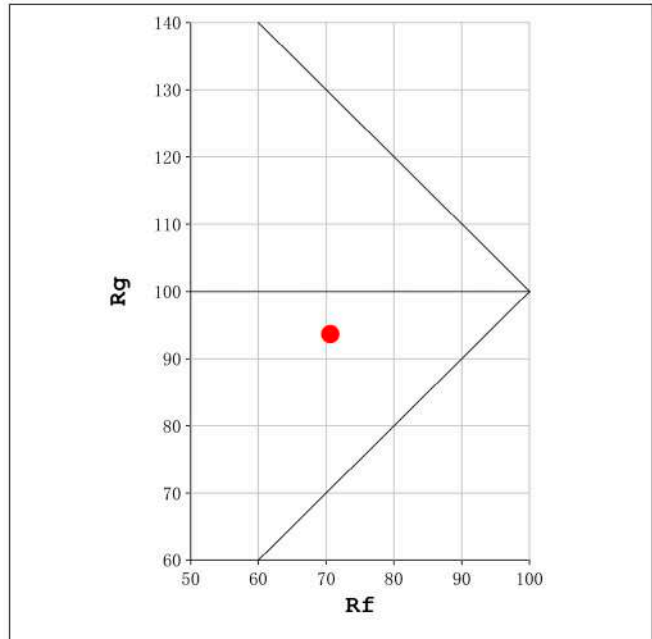
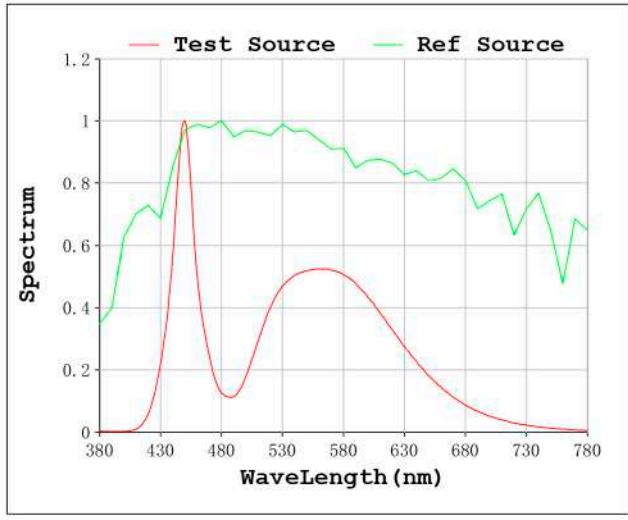
Electrical parameters:

V = 11.998 V I = 0.7661 A P = 9.192 W PF = 1.000

Status: Integral T = 715 ms Ip = 32968 (50%)

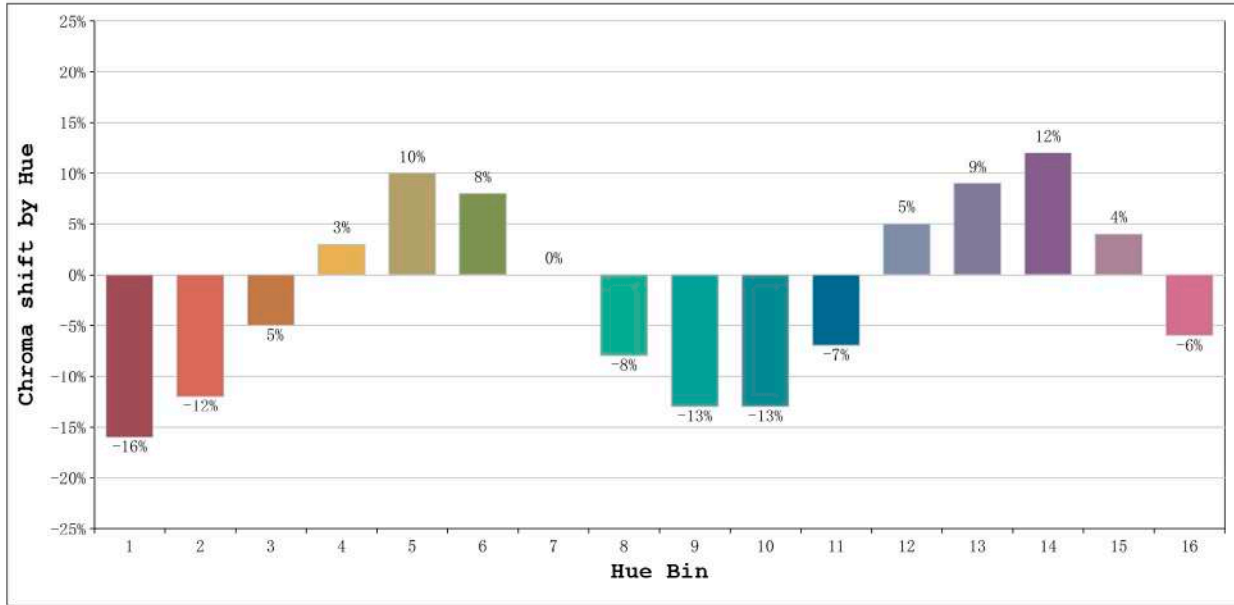
| | |
|----------------------------|--------------------------------|
| Model:Ecoled Topacio 6000K | Number: 30.013 |
| Tester:Sergio Carneros | Date:25-5-2021 |
| Temperature:21Deg | Humidity:57% |
| Manufacturer:Luz Negra S.L | Remarks:100cm de tira flexible |

Rf: 71 CCT: 5767 K u': 0.2044
Rg: 94 Duv: 0.0006 v': 0.4746



Model:Ecoled Topacio 6000K
Tester:Sergio Carneros
Temperature:21Deg
Manufacturer:Luz Negra S.L

Number: 30.013
Date:25-5-2021
Humidity:57%
Remarks:100cm de tira flexible

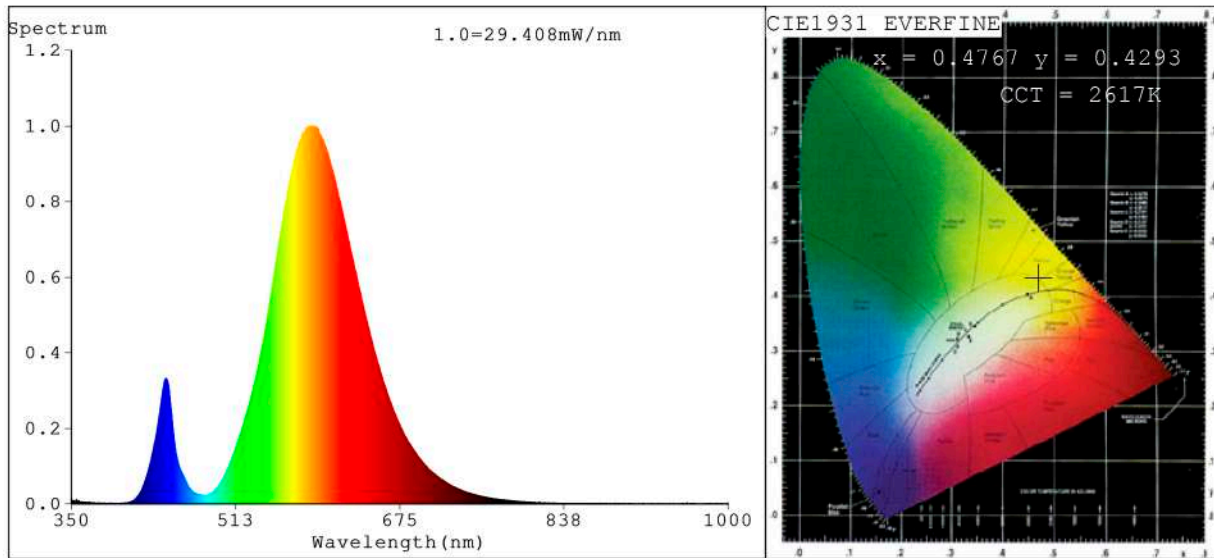


| Hue Bin | Hue Angle | Rf | Graphic shift(%) | |
|---------|-----------------|----|------------------|-----|
| | | | Chroma | Hue |
| 1 | 0.0° - 22.5° | 68 | -16 | -2 |
| 2 | 22.5° - 45.0° | 69 | -12 | 9 |
| 3 | 45.0° - 67.5° | 55 | -5 | 21 |
| 4 | 67.5° - 90.0° | 62 | 3 | 19 |
| 5 | 90.0° - 112.5° | 75 | 10 | 11 |
| 6 | 112.5° - 135.0° | 86 | 8 | -2 |
| 7 | 135.0° - 157.5° | 81 | 0 | -10 |
| 8 | 157.5° - 180.0° | 77 | -8 | -8 |
| 9 | 180.0° - 202.5° | 77 | -13 | 0 |
| 10 | 202.5° - 225.0° | 61 | -13 | 16 |
| 11 | 225.0° - 247.5° | 57 | -7 | 28 |
| 12 | 247.5° - 270.0° | 65 | 5 | 19 |
| 13 | 270.0° - 292.5° | 83 | 9 | 5 |
| 14 | 292.5° - 315.0° | 77 | 12 | -7 |
| 15 | 315.0° - 337.5° | 72 | 4 | -16 |
| 16 | 337.5° - 360.0° | 67 | -6 | -14 |

Model:Ecoled Topacio 6000K
Tester:Sergio Carneros
Temperature:21Deg
Manufacturer:Luz Negra S.L

Number: 30.013
Date:25-5-2021
Humidity:57%
Remarks:100cm de tira flexible

Spectrum Test Report



Color Parameters:

Chromaticity Coordinate: $x=0.4767$ $y=0.4293$ / $u'=0.2649$ $v'=0.5368$
 CCT=2617K (Duv=0.0054) Dominant WL: $\lambda_d = 583.1\text{nm}$ Purity=72.0%
 Ratio: R=21.4% G=78.0% B=0.6% ; Peak WL: $\lambda_p = 586.9\text{nm}$ FWHM=96.7nm
 Render Index: Ra=55.9 CRI=47.9 TM30: Rf=57 Rg=87
 R1 =49 R2 =70 R3 =91 R4 =46 R5 =45 R6 =54 R7 =71
 R8 =23 R9 =0 R10=33 R11=29 R12=15 R13=51 R14=95 R15=42

Photo Parameters:

Flux = 1289 lm Eff. : 108.61 lm/W Fe = 3.432 W Scotopic: 1107.2 S/P: 0.85875

Electrical parameters:

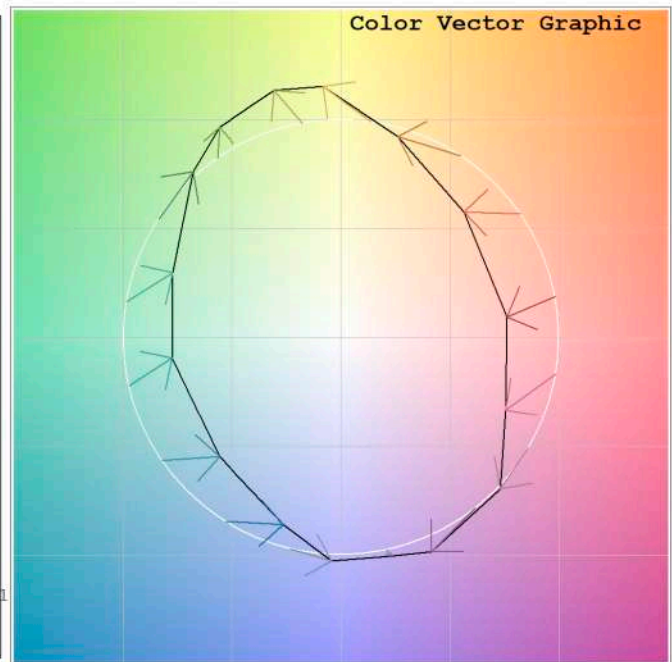
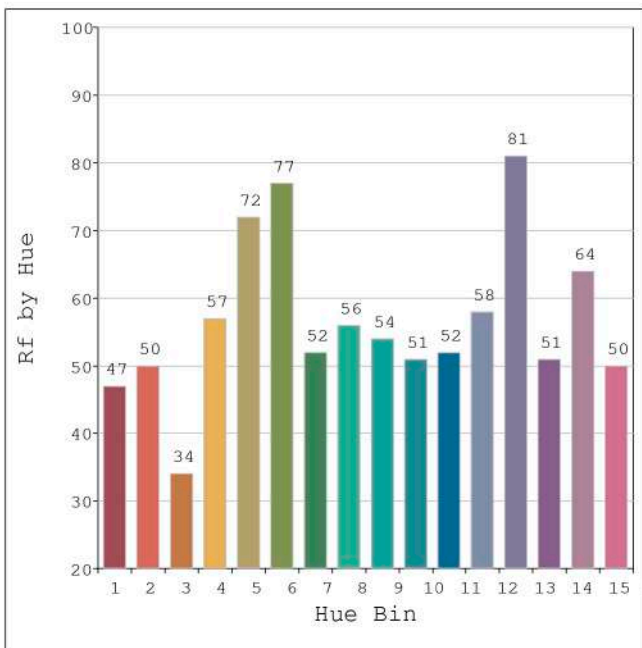
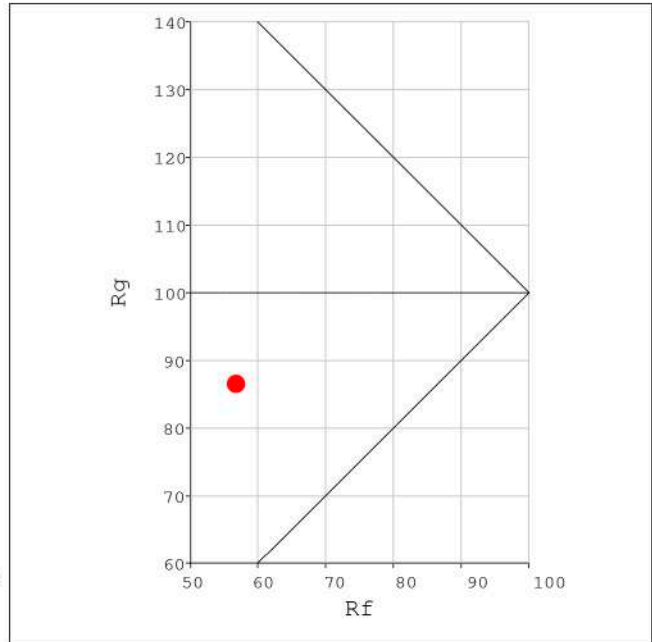
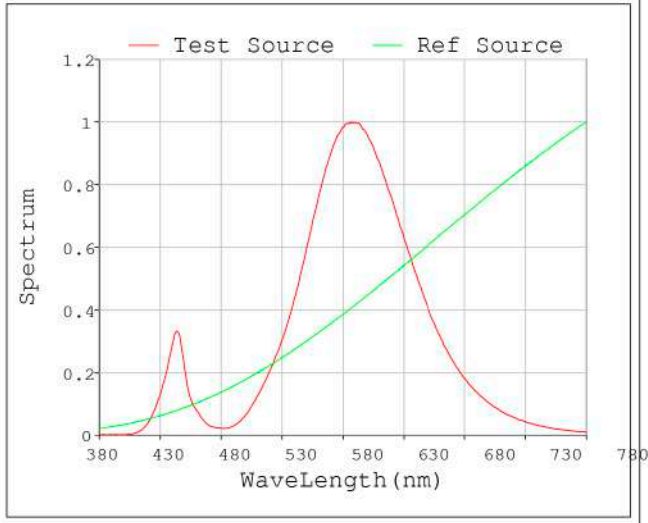
V = 11.998 V I = 0.9894 A P = 11.87 W PF = 1.000

Status: Integral T = 856 ms Ip = 49018 (75%)

Model: Ecoled Topacio 2800k
 Tester: Sergio Carneros
 Temperature: 20Deg
 Manufacturer: LUZNEGRA

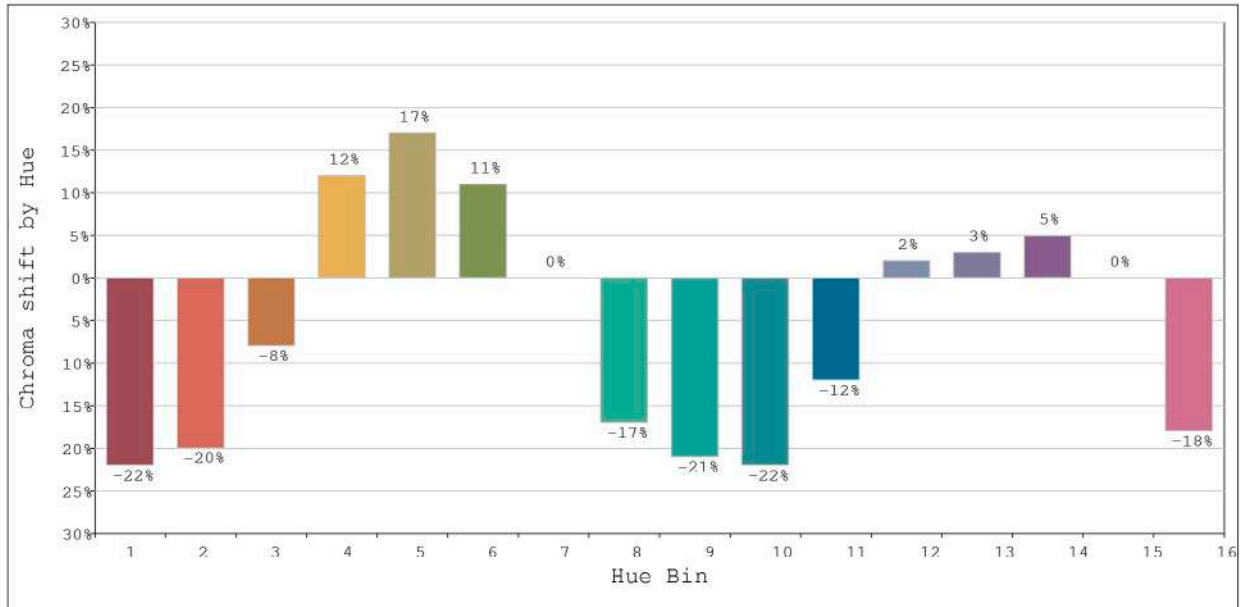
Number: 30.014
 Date: 25-5-2021
 Humidity: 57%
 Remarks: 100cm de tira flexible

Rf: 57 CCT: 2617 K u': 0.2649
Rg: 87 Duv: 0.0054 v': 0.5368



Model: Ecoled Topacio 2800k
Tester: Sergio Carneros
Temperature: 20Deg
Manufacturer: LUZNEGRA

Number: 30.014
Date: 25-5-2021
Humidity: 57%
Remarks: 100cm de tira flexible



| Hue Bin | Hue Angle | Rf | Graphic shift (%) | |
|---------|-----------------|----|-------------------|-----|
| | | | Chroma | Hue |
| 1 | 0.0° - 22.5° | 47 | -22 | -4 |
| 2 | 22.5° - 45.0° | 50 | -20 | 15 |
| 3 | 45.0° - 67.5° | 34 | -8 | 29 |
| 4 | 67.5° - 90.0° | 57 | 12 | 25 |
| 5 | 90.0° - 112.5° | 72 | 17 | 10 |
| 6 | 112.5° - 135.0° | 77 | 11 | -7 |
| 7 | 135.0° - 157.5° | 52 | 0 | -26 |
| 8 | 157.5° - 180.0° | 56 | -17 | -16 |
| 9 | 180.0° - 202.5° | 54 | -21 | -7 |
| 10 | 202.5° - 225.0° | 51 | -22 | 13 |
| 11 | 225.0° - 247.5° | 52 | -12 | 23 |
| 12 | 247.5° - 270.0° | 58 | 2 | 19 |
| 13 | 270.0° - 292.5° | 81 | 3 | 0 |
| 14 | 292.5° - 315.0° | 51 | 5 | -27 |
| 15 | 315.0° - 337.5° | 64 | 0 | -21 |
| 16 | 337.5° - 360.0° | 50 | 18 | 20 |

Model: Ecoled Topacio 2800k
 Tester: Sergio Carneros
 Temperature: 20Deg
 Manufacturer: LUZNEGRA

Number: 30.014
 Date: 25-5-2021
 Humidity: 57%
 Remarks: 100cm de tira flexible