

MEDIUM BRIGHTNESS

Ref: 30.013
Ref: 30.014

6000°K
2800°K

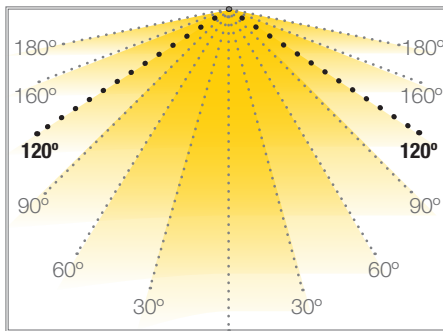
Single-coloured "BASIC" flexible strip
IP20 with 144 leds/metre 3528SMD.

Requires use with led profile to permit dissipation.

10mm PCB

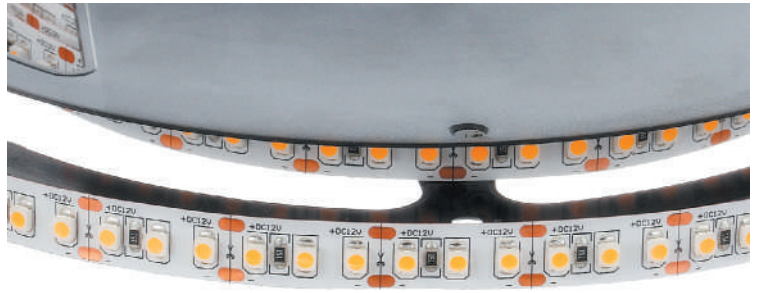
Daily recommended use: 12h
Maximum connection in open circuit: 5m
Maximum connection in closed circuit: 10m
Estimated lifespan: 30000h *

* Depending on the dissipation of the profile, the daily working hours and the external environmental working temperature



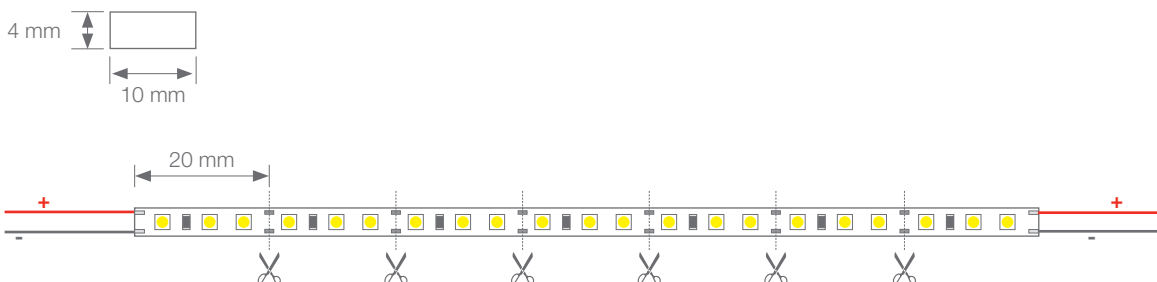
TOPACIO

FLEXIBLE STRIP



Power (W)	11.52W/m
Voltage (V)	12V
Led type	SMD3528
Lumens (6000°K)	864 Lm/m
Lumens (2800°K)	682 Lm/m
CRI	>45
Light emission	120°
Waterproofing	IP20
N° leds/m	144
Measurements	5000x10x4mm
Cuttable	every 20mm
PCB	10mm
Working temperature	-20°C / +40°C
Apt for	indoor
Packaging	1 roll/5m
Guarantee	2 years

Aprobado por: 

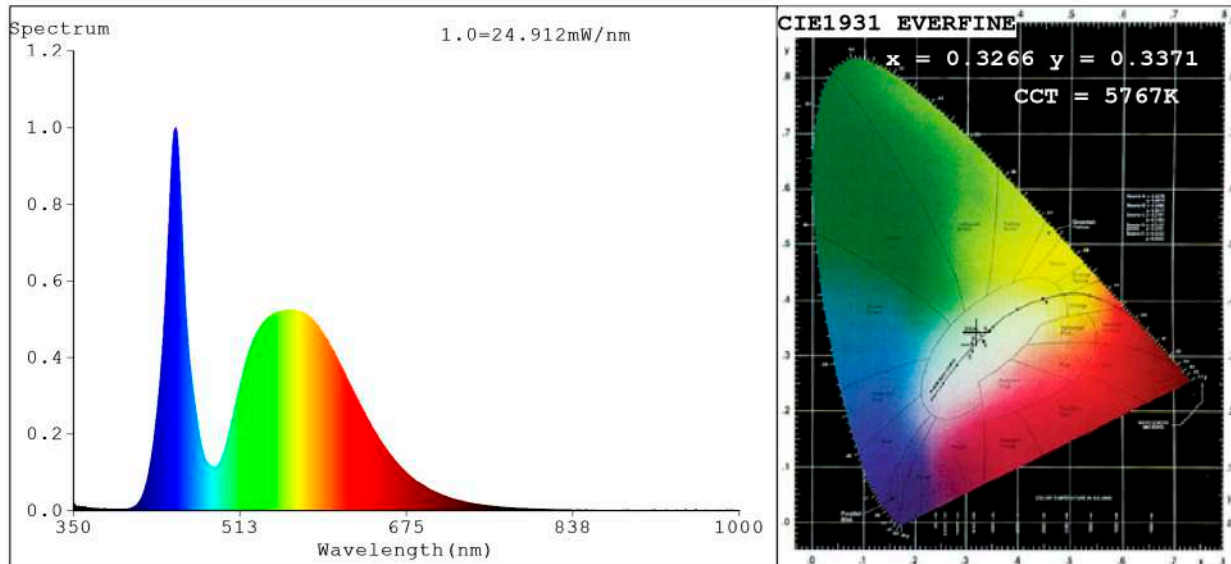


BARCELONA
C/ Carles Buhigues, 13
08420 Canovelles
Info@luznegra.net
Tel: +34 938 402 598

MADRID
C/ Minas, 35-37
28923 Alcorcón
centro@luznegra.net
Tel: +34 916 416 081

PARIS
113 Avenue Joffre
77450 Esbly
france@luznegra.net
Tel: +33 (0) 160 426 585

Spectrum Test Report



Color Parameters:

Chromaticity Coordinate: $x=0.3266$ $y=0.3371$ / $u'=0.2044$ $v'=0.4746$
 CCT=5767K (Duv=0.0006) Dominant WL: $\lambda_d = 499.0\text{nm}$ Purity=2.1%
 Ratio: R=13.3% G=83.1% B=3.7% ; Peak WL: $\lambda_p = 449.8\text{nm}$ FWHM=21.4nm
 Render Index: Ra=73.3 CRI=64.5 TM30: Rf=71 Rg=94
 R1 =72 R2 =77 R3 =79 R4 =74 R5 =72 R6 =68 R7 =82
 R8 =61 R9 =0 R10=44 R11=71 R12=43 R13=72 R14=88 R15=68

Photo Parameters:

Flux = 780.2 lm Eff. : 84.88 lm/W $F_e = 2.419$ W Scotopic:1497.8 S/P:1.9197

Electrical parameters:

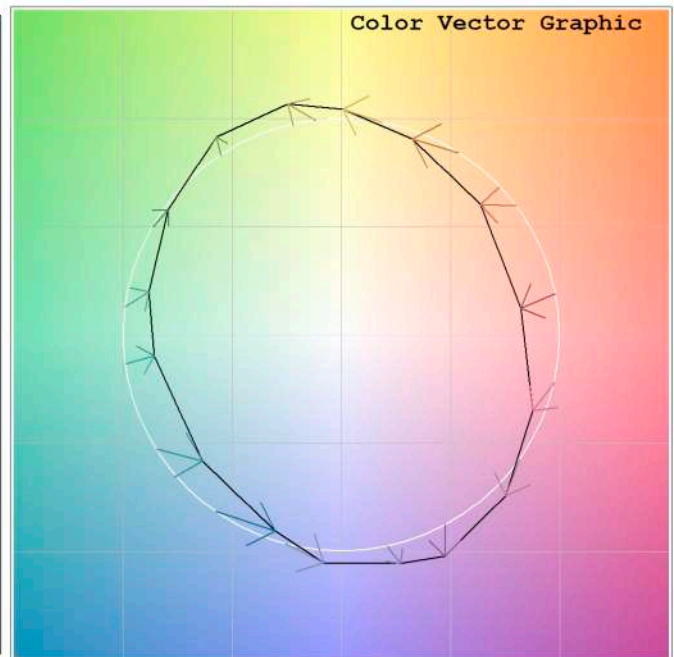
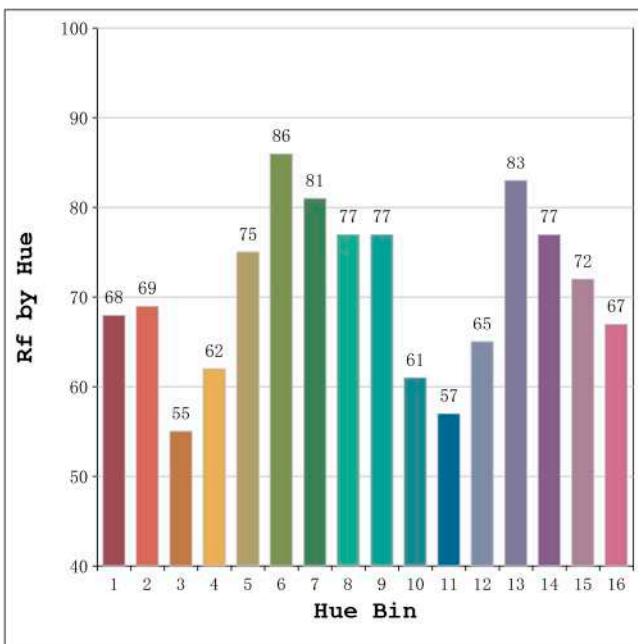
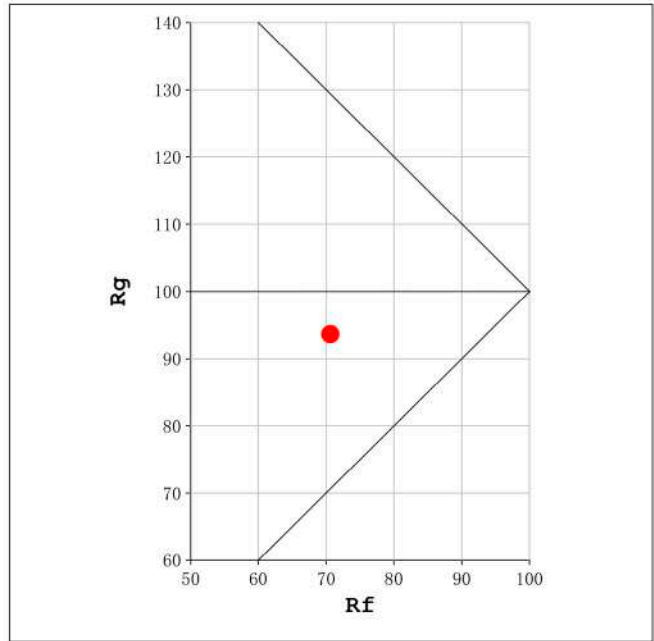
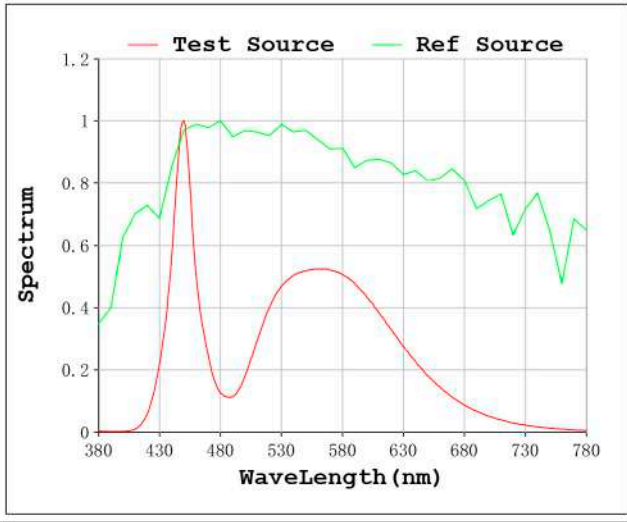
V = 11.998 V I = 0.7661 A P = 9.192 W PF = 1.000

Status: Integral T = 715 ms $I_p = 32968$ (50%)

Model:Ecoled Topacio 6000K
 Tester:Sergio Carneros
 Temperature:21Deg
 Manufacturer:Luz Negra S.L

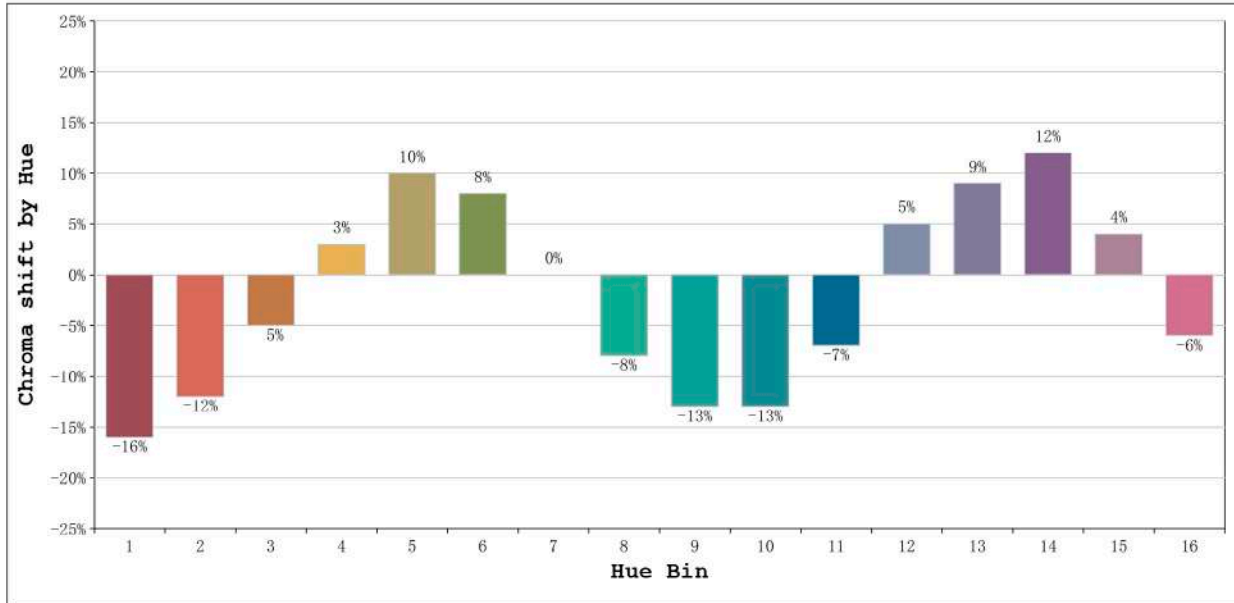
Number: 30.013
 Date:25-5-2021
 Humidity:57%
 Remarks:100cm de tira flexible

Rf: 71 CCT: 5767 K u': 0.2044
Rg: 94 Duv: 0.0006 v': 0.4746



Model:Ecoled Topacio 6000K
Tester:Sergio Carneros
Temperature:21Deg
Manufacturer:Luz Negra S.L

Number: 30.013
Date:25-5-2021
Humidity:57%
Remarks:100cm de tira flexible

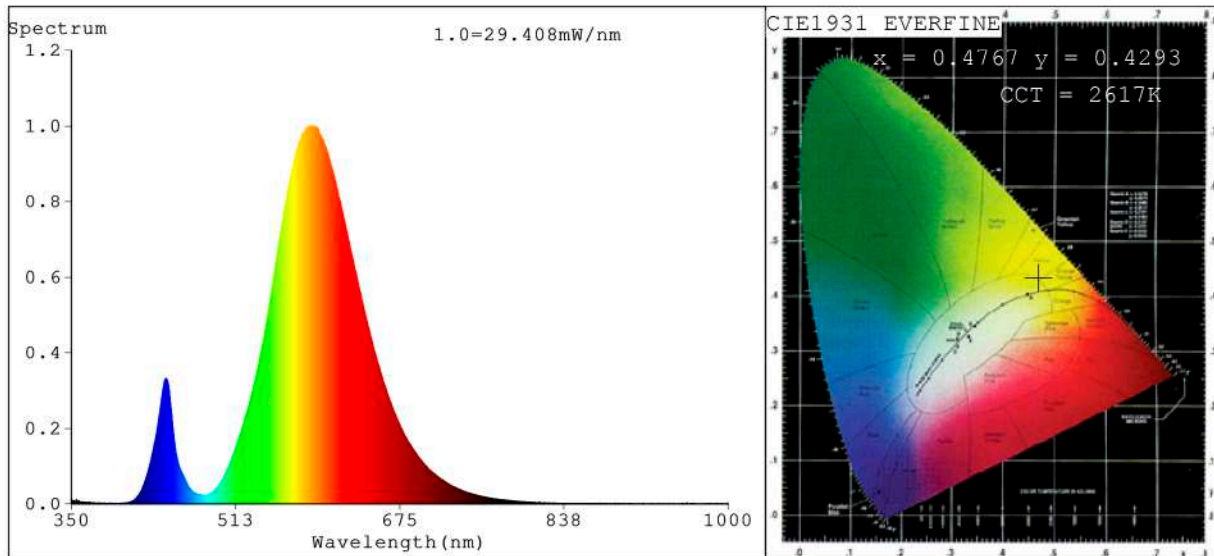


Hue Bin	Hue Angle	Rf	Graphic shift(%)	
			Chroma	Hue
1	0.0° - 22.5°	68	-16	-2
2	22.5° - 45.0°	69	-12	9
3	45.0° - 67.5°	55	-5	21
4	67.5° - 90.0°	62	3	19
5	90.0° - 112.5°	75	10	11
6	112.5° - 135.0°	86	8	-2
7	135.0° - 157.5°	81	0	-10
8	157.5° - 180.0°	77	-8	-8
9	180.0° - 202.5°	77	-13	0
10	202.5° - 225.0°	61	-13	16
11	225.0° - 247.5°	57	-7	28
12	247.5° - 270.0°	65	5	19
13	270.0° - 292.5°	83	9	5
14	292.5° - 315.0°	77	12	-7
15	315.0° - 337.5°	72	4	-16
16	337.5° - 360.0°	67	-6	-14

Model:Ecoled Topacio 6000K
 Tester:Sergio Carneros
 Temperature:21Deg
 Manufacturer:Luz Negra S.L

Number: 30.013
 Date:25-5-2021
 Humidity:57%
 Remarks:100cm de tira flexible

Spectrum Test Report



Color Parameters:

Chromaticity Coordinate: $x=0.4767$ $y=0.4293$ / $u'=0.2649$ $v'=0.5368$
 CCT=2617K (Duv=0.0054) Dominant WL: $\lambda_d = 583.1\text{nm}$ Purity=72.0%
 Ratio: R=21.4% G=78.0% B=0.6% ; Peak WL: $\lambda_p = 586.9\text{nm}$ FWHM=96.7nm
 Render Index: Ra=55.9 CRI=47.9 TM30: Rf=57 Rg=87
 R1 =49 R2 =70 R3 =91 R4 =46 R5 =45 R6 =54 R7 =71
 R8 =23 R9 =0 R10=33 R11=29 R12=15 R13=51 R14=95 R15=42

Photo Parameters:

Flux = 1289 lm Eff. : 108.61 lm/W Fe = 3.432 W Scotopic: 1107.2 S/P: 0.85875

Electrical parameters:

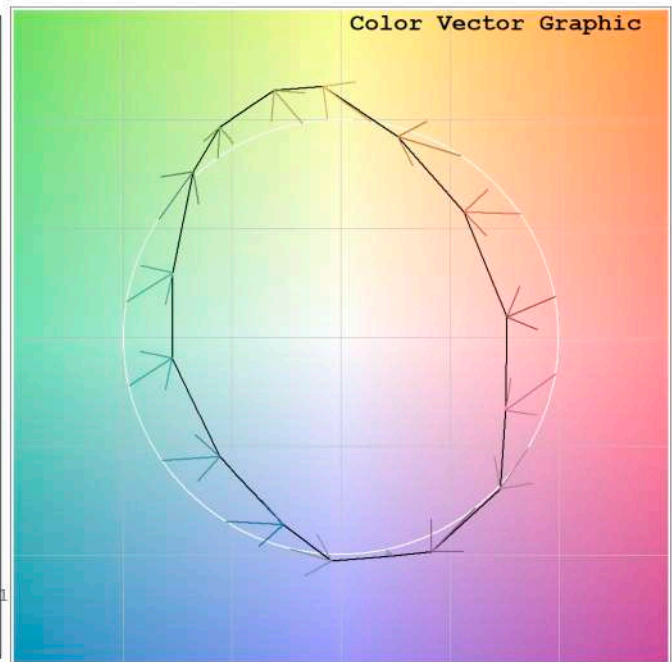
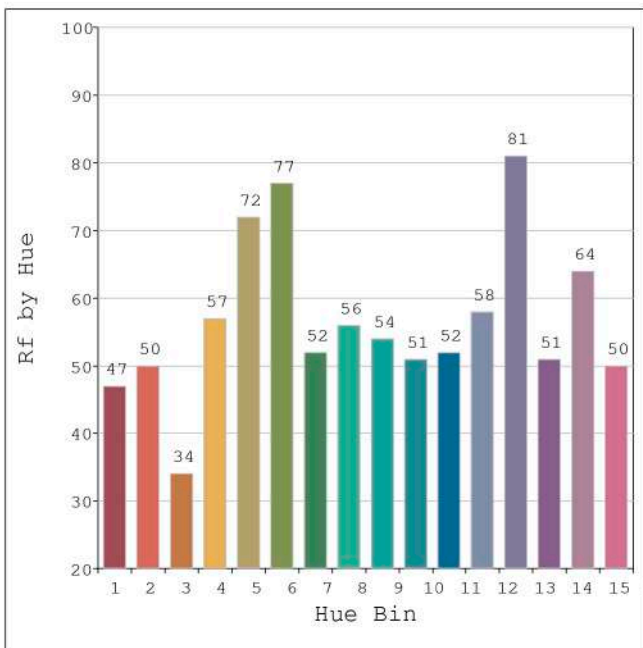
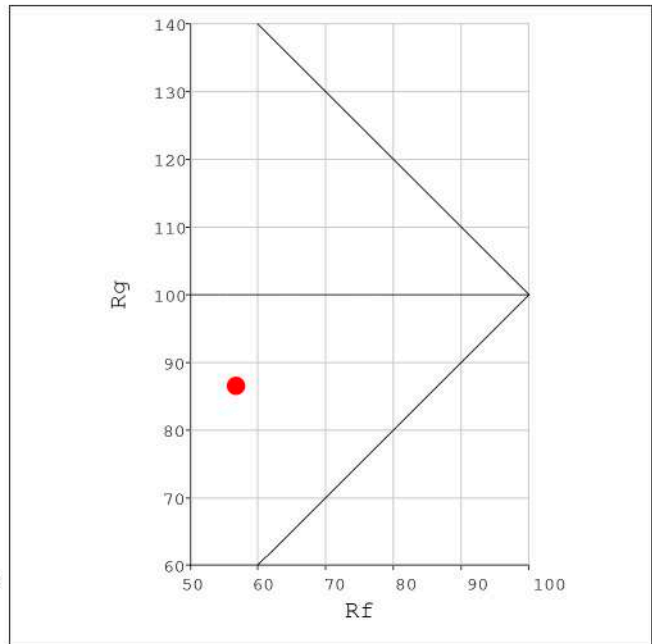
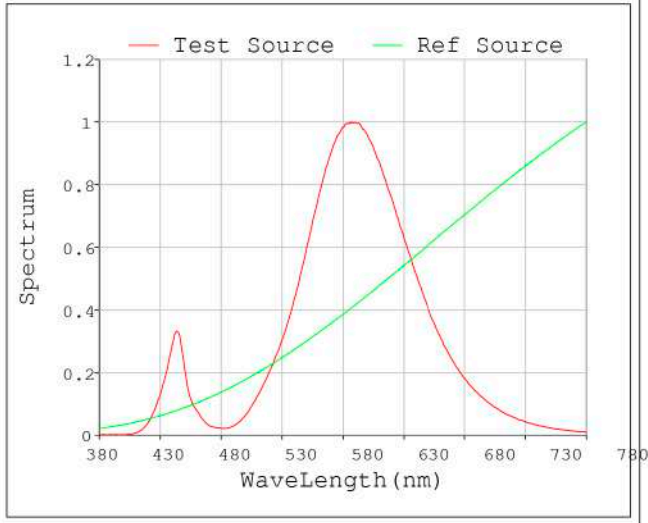
V = 11.998 V I = 0.9894 A P = 11.87 W PF = 1.000

Status: Integral T = 856 ms Ip = 49018 (75%)

Model: Ecoled Topacio 2800k
 Tester: Sergio Carneros
 Temperature: 20Deg
 Manufacturer: LUZNEGRA

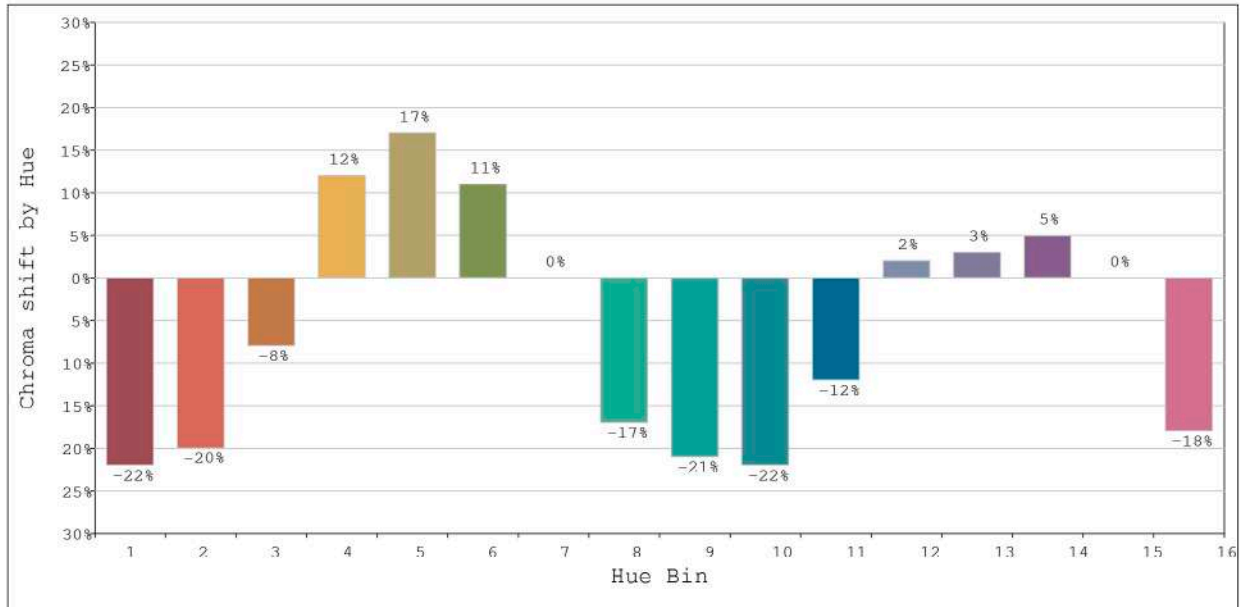
Number: 30.014
 Date: 25-5-2021
 Humidity: 57%
 Remarks: 100cm de tira flexible

Rf: 57 CCT: 2617 K u': 0.2649
Rg: 87 Duv: 0.0054 v': 0.5368



Model: Ecoled Topacio 2800k
Tester: Sergio Carneros
Temperature: 20Deg
Manufacturer: LUZNEGRA

Number: 30.014
Date: 25-5-2021
Humidity: 57%
Remarks: 100cm de tira flexible



Hue Bin	Hue Angle	Rf	Graphic shift (%)	
			Chroma	Hue
1	0.0° - 22.5°	47	-22	-4
2	22.5° - 45.0°	50	-20	15
3	45.0° - 67.5°	34	-8	29
4	67.5° - 90.0°	57	12	25
5	90.0° - 112.5°	72	17	10
6	112.5° - 135.0°	77	11	-7
7	135.0° - 157.5°	52	0	-26
8	157.5° - 180.0°	56	-17	-16
9	180.0° - 202.5°	54	-21	-7
10	202.5° - 225.0°	51	-22	13
11	225.0° - 247.5°	52	-12	23
12	247.5° - 270.0°	58	2	19
13	270.0° - 292.5°	81	3	0
14	292.5° - 315.0°	51	5	-27
15	315.0° - 337.5°	64	0	-21
16	337.5° - 360.0°	50	18	20

Model: Ecoled Topacio 2800k
 Tester: Sergio Carneros
 Temperature: 20Deg
 Manufacturer: LUZNEGRA

Number: 30.014
 Date: 25-5-2021
 Humidity: 57%
 Remarks: 100cm de tira flexible