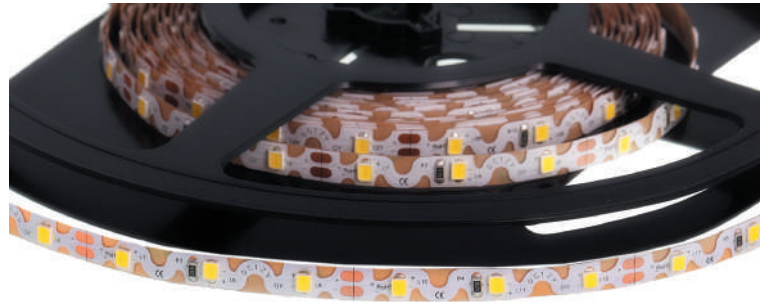


MEDIUM BRIGHTNESS

Ref: 32.075	6000K
Ref: 32.076	4400K
Ref: 32.077	3000K
Ref: 32.078	Blue
Ref: 32.079	Amber
Ref: 32.080	Red
Ref: 32.081	Green

AVILA

FLEXIBLE STRIP



Single-coloured flexible led strip "PRO"

IP54 **nanocoating** with 60 leds/metre 2835SMD.

Requires use with led profile to permit dissipation.

Heat dissipation tape included.

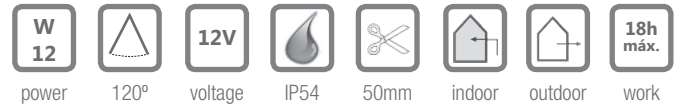
6mm PCB

Daily recommended use: 18h

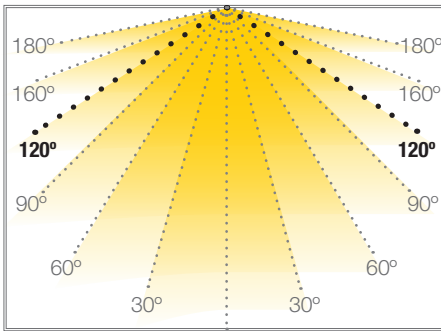
Maximum connection in open circuit: 2.5m

Maximum connection in closed circuit: 5m

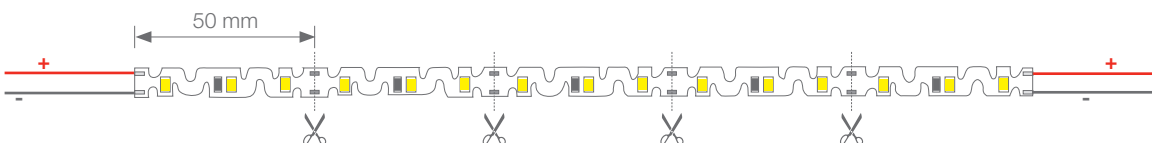
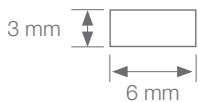
Estimated lifespan: 50000h *



* Depending on the dissipation of the profile, the daily working hours and the external environmental working temperature

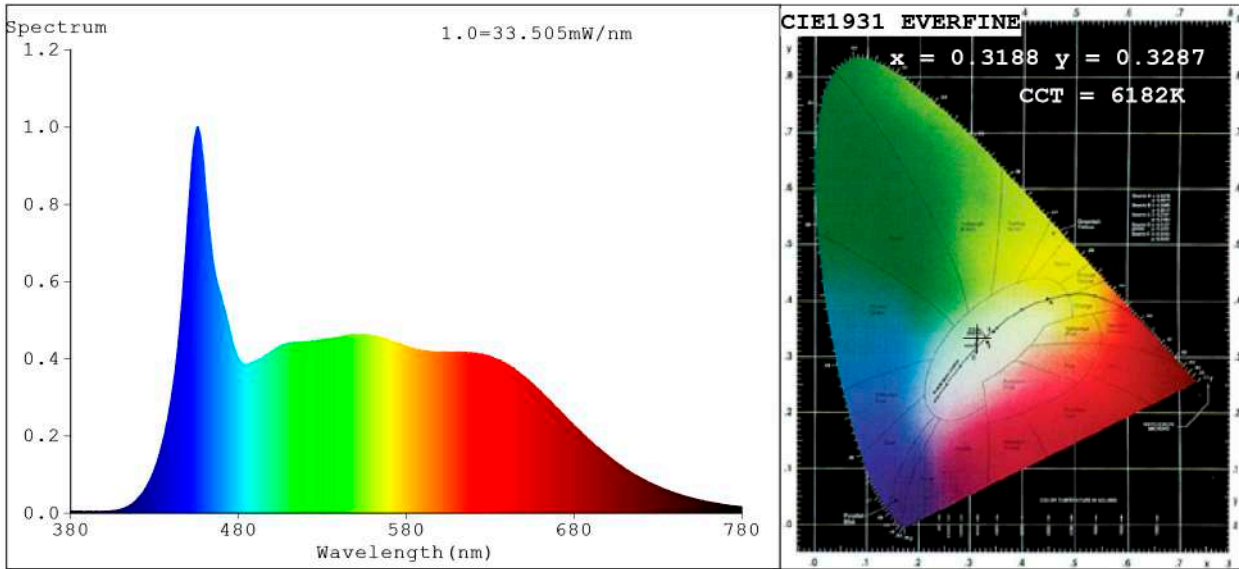


Power (W)	12W/m
Voltage (V)	12V
Led type	SMD2835
Lumens (6000K)	1071 Lm/m
Lumens (4400K)	1010 Lm/m
Lumens (3000K)	945 Lm/m
Lumens (Azul)	217 Lm/m
Lumens (Ambar)	236 Lm/m
Lumens (Rojo)	365 Lm/m
Lumens (Verde)	653 Lm/m
CRI	>90
Light emission	120°
Waterproofing	IP54
N° leds/m	60
Measurements	5000x6x3mm
Cuttable	every 50mm
PCB	6mm
Working temperature	-20°C / +40°C
Apt for	indoor/outdoor
Packaging	1 roll/5m
Guarantee	3 years



Approved by: 

Spectrum Test Report



Color Parameters:

Chromaticity Coordinate: $x=0.3188$ $y=0.3287$ / $u'=0.2021$ $v'=0.4691$
 CCT=6182K (Duv=0.0000) Dominant WL: $L_d = 487.6\text{nm}$ Purity=5.3%
 Ratio: R=16.1% G=76.8% B=7.1% ; Peak WL: $L_p=455.4\text{nm}$ FWHM=28.0nm
 Render Index: Ra=95.2 CRI=94.3 TM30: Rf=91 Rg=100
 R1 =97 R2 =98 R3 =98 R4 =93 R5 =95 R6 =94 R7 =94
 R8 =94 R9 =95 R10=97 R11=96 R12=73 R13=98 R14=100 R15=95

Photo Parameters:

Flux = 1071 lm Eff. : 91.06 lm/W Fe = 3.976 W Scotopic: 2570.8 S/P: 2.3996

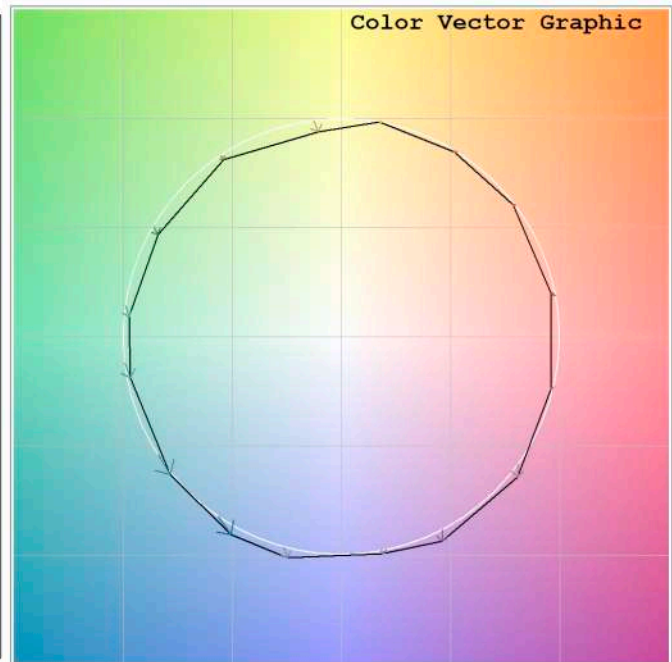
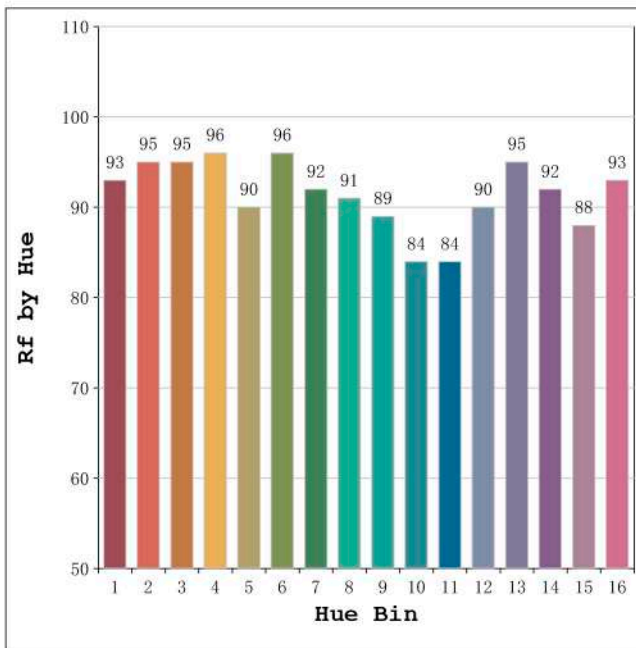
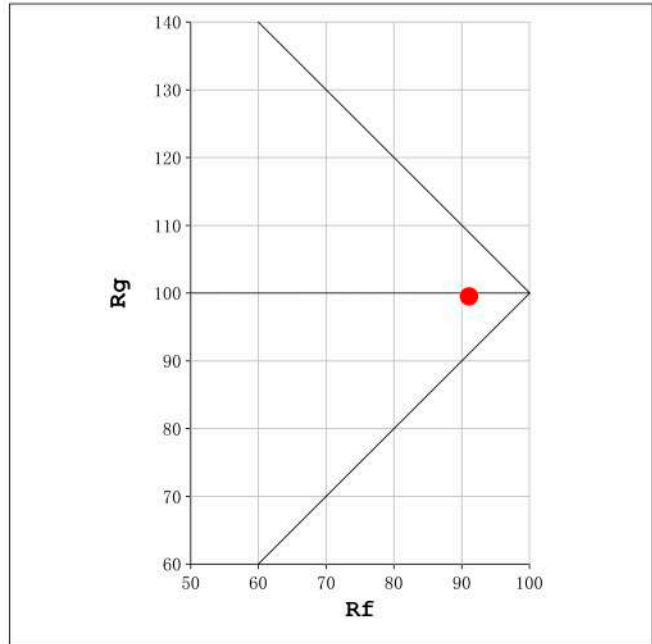
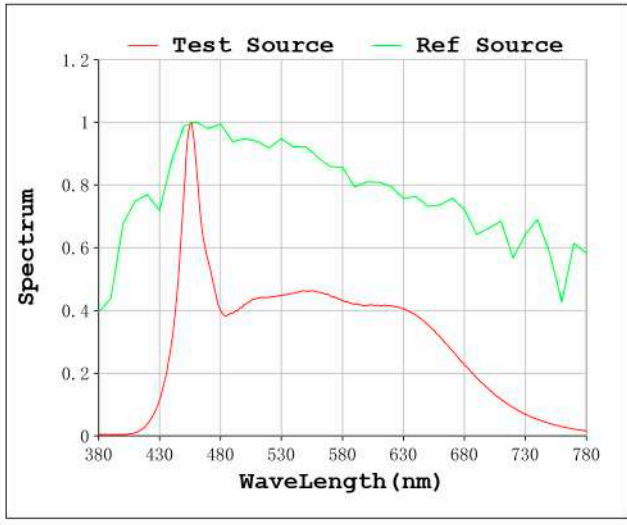
Electrical parameters:

V = 11.998 V I = 0.9806 A P = 11.77 W PF = 1.000

Status: Integral T = 937 ms Ip = 51616 (79%)

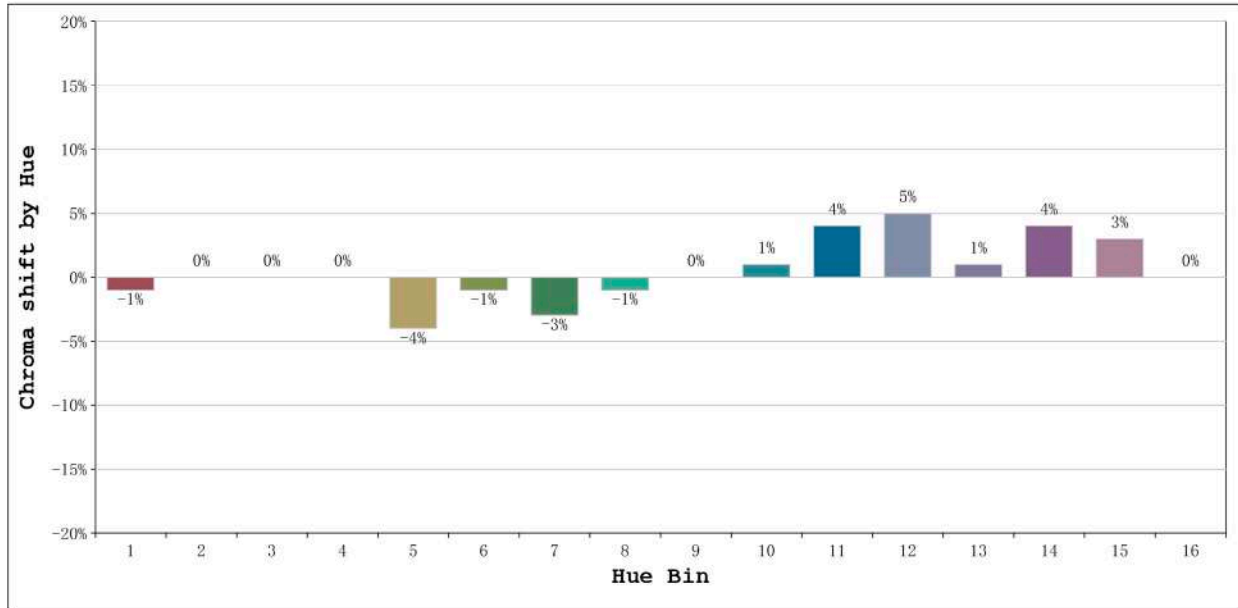
Model: Ecoled Avila Pro 6000K	Number: 32.075
Tester: Sergio Carneros	Date: 26-5-2021
Temperature: 25Deg	Humidity: 57%
Manufacturer: Luz Negra S.L.	Remarks: 100cm de tira flexible

Rf: 91 CCT: 6182 K u': 0.2021
Rg: 100 Duv: 0.0000 v': 0.4691



Model:Ecoled Avila Pro 6000K
Tester:Sergio Carneros
Temperature:25Deg
Manufacturer:Luz Negra S.L.

Number: 32.075
Date:26-5-2021
Humidity:57%
Remarks:100cm de tira flexible

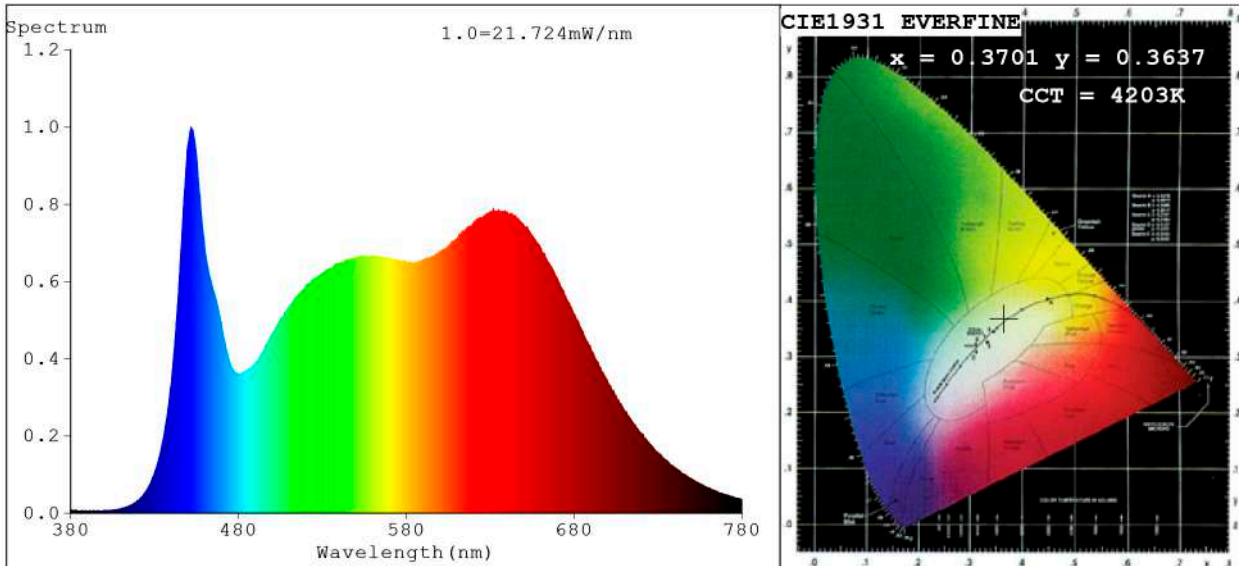


Hue Bin	Hue Angle	Rf	Graphic shift(%)	
			Chroma	Hue
1	0.0° - 22.5°	93	-1	1
2	22.5° - 45.0°	95	0	1
3	45.0° - 67.5°	95	0	1
4	67.5° - 90.0°	96	0	1
5	90.0° - 112.5°	90	-4	0
6	112.5° - 135.0°	96	-1	0
7	135.0° - 157.5°	92	-3	2
8	157.5° - 180.0°	91	-1	4
9	180.0° - 202.5°	89	0	7
10	202.5° - 225.0°	84	1	10
11	225.0° - 247.5°	84	4	9
12	247.5° - 270.0°	90	5	2
13	270.0° - 292.5°	95	1	-1
14	292.5° - 315.0°	92	4	-2
15	315.0° - 337.5°	88	3	-4
16	337.5° - 360.0°	93	0	-1

Model:Ecoled Avila Pro 6000K
 Tester:Sergio Carneros
 Temperature:25Deg
 Manufacturer:Luz Negra S.L.

Number: 32.075
 Date:26-5-2021
 Humidity:57%
 Remarks:100cm de tira flexible

Spectrum Test Report



Color Parameters:

Chromaticity Coordinate: $x=0.3701$ $y=0.3637$ $u'=0.2235$ $v'=0.4941$
 CCT=4203K (Duv=-0.0031) Dominant WL:Ld =580.5nm Purity=20.2%
 Ratio:R=20.1% G=75.2% B=4.7%; Peak WL:Lp=451.9nm FWHM=26.3nm
 Render Index:Ra=97.6 CRI=95.4 TM30:Rf=93 Rg=103 Lav=583.5nm
 R1 =98 R2 =99 R3 =95 R4 =99 R5 =98 R6 =95 R7 =100
 R8 =97 R9 =93 R10=96 R11=97 R12=75 R13=99 R14=96 R15=96

Photo Parameters:

Flux = 1010 lm Eff. : 97.07 lm/W Fe = 3.793 W Scotopic:1920.6 S/P:1.9009

Electrical parameters:

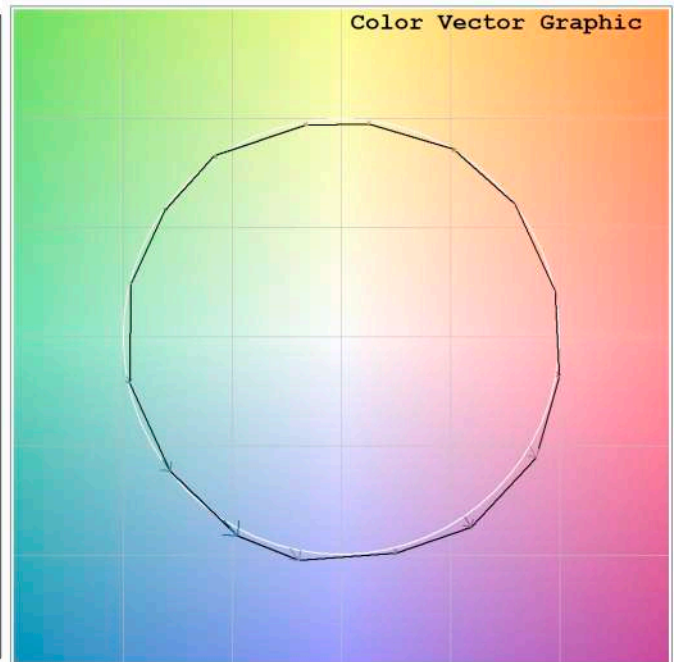
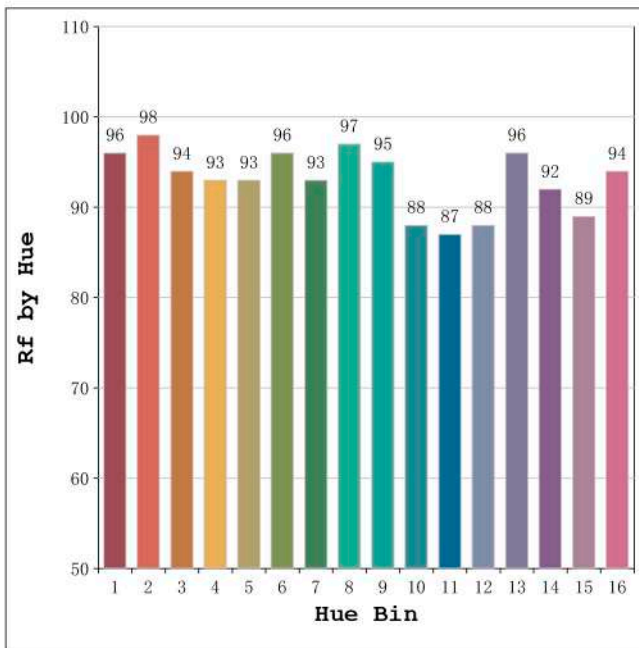
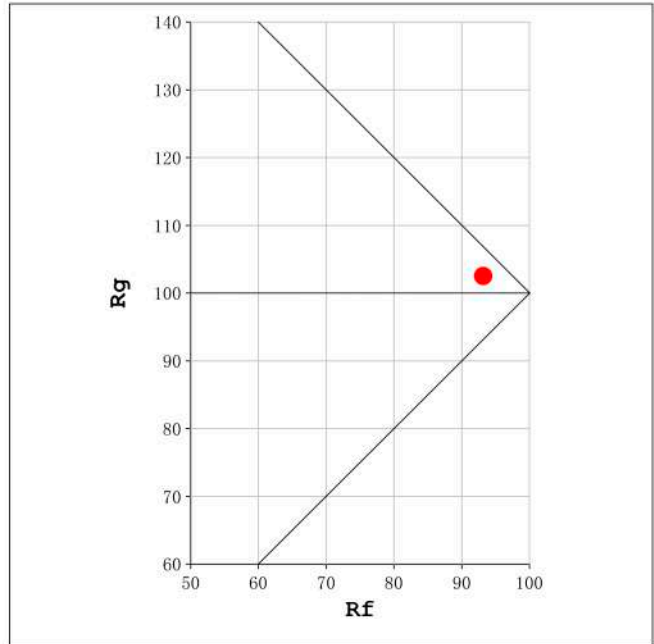
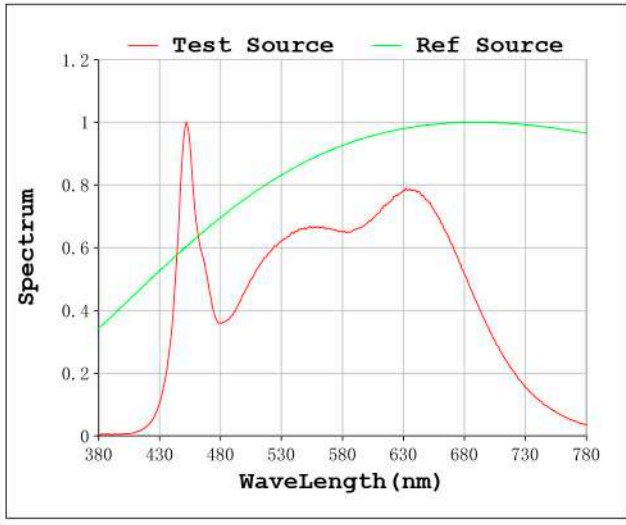
V = 11.998 V I = 0.8675 A P = 10.41 W PF = 1.000

Status: Integral T = 500 ms Ip = 15997 (24%)

Model:Ecoled Ávila pro neutro
 Tester:Sergio Carneros
 Temperature:25Deg
 Manufacturer:Luz Negra.S.L

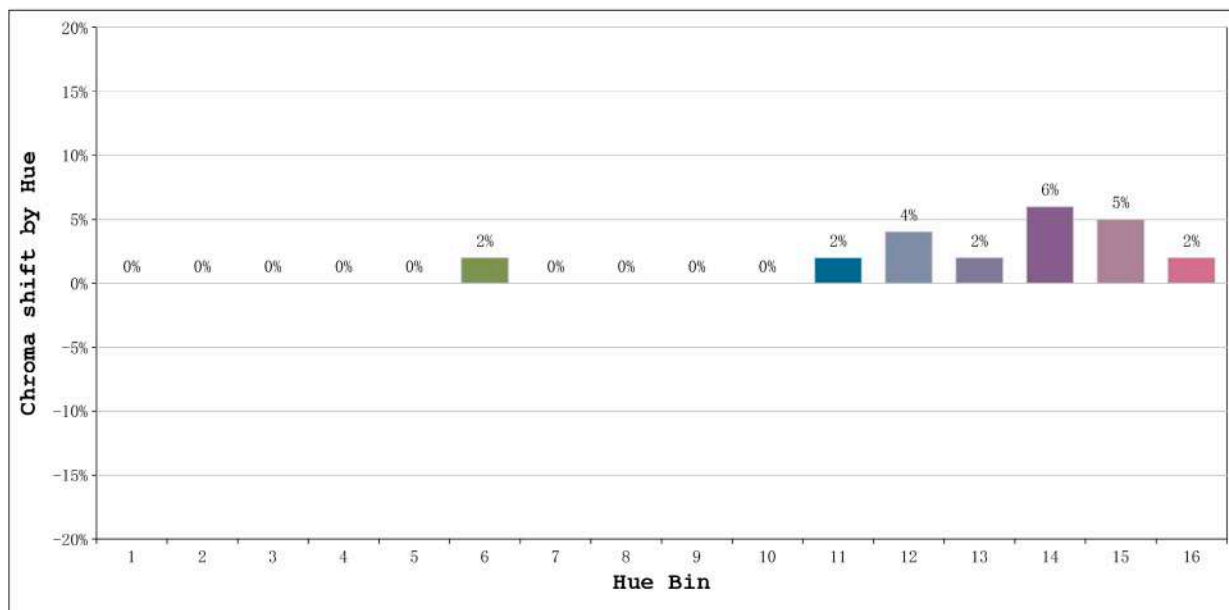
Number: 32.076
 Date:26-5-2021
 Humidity:57%
 Remarks:100cm Tira flexible

Rf: 93 CCT: 4203 K u': 0.2235
Rg: 103 Duv: -0.0031 v': 0.4941



Model:Ecoled Ávila pro neutro
Tester:Sergio Carneros
Temperature:25Deg
Manufacturer:Luz Negra.S.L

Number: 32.076
Date:26-5-2021
Humidity:57%
Remarks:100cm Tira flexible

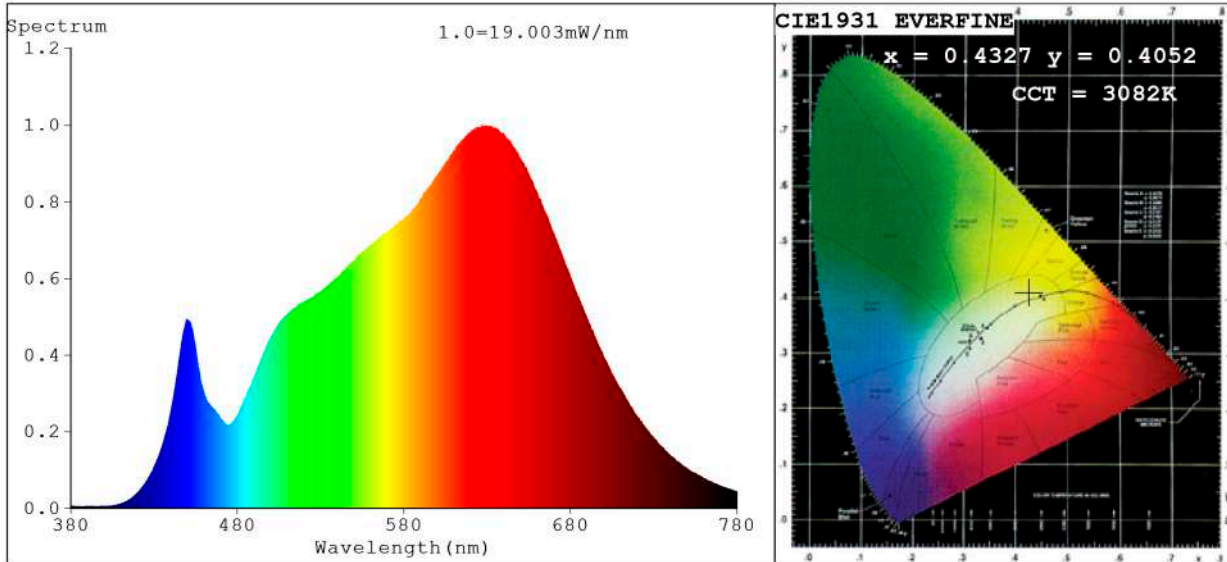


Hue Bin	Hue Angle	Rf	Graphic shift(%)	
			Chroma	Hue
1	0.0° - 22.5°	96	0	0
2	22.5° - 45.0°	98	0	0
3	45.0° - 67.5°	94	0	2
4	67.5° - 90.0°	93	0	1
5	90.0° - 112.5°	93	0	1
6	112.5° - 135.0°	96	2	1
7	135.0° - 157.5°	93	0	1
8	157.5° - 180.0°	97	0	0
9	180.0° - 202.5°	95	0	3
10	202.5° - 225.0°	88	0	6
11	225.0° - 247.5°	87	2	9
12	247.5° - 270.0°	88	4	5
13	270.0° - 292.5°	96	2	1
14	292.5° - 315.0°	92	6	0
15	315.0° - 337.5°	89	5	-2
16	337.5° - 360.0°	94	2	-1

Model:Ecoled Ávila pro neutro
 Tester:Sergio Carneros
 Temperature:25Deg
 Manufacturer:Luz Negra.S.L

Number: 32.076
 Date:26-5-2021
 Humidity:57%
 Remarks:100cm Tira flexible

Spectrum Test Report



Color Parameters:

Chromaticity Coordinate: $x=0.4327$ $y=0.4052$ / $u'=0.2474$ $v'=0.5212$
 CCT=3082K (Duv=0.0010) Dominant WL:Ld =582.1nm Purity=51.5%
 Ratio:R=24.1% G=72.8% B=3.1%; Peak WL:Lp=627.1nm FWHM=180.2nm
 Render Index:Ra=96.7 CRI=94.9 TM30:Rf=95 Rg=100 Lav=604.0nm
 R1 =97 R2 =98 R3 =97 R4 =98 R5 =97 R6 =97 R7 =97
 R8 =92 R9 =80 R10=94 R11=98 R12=88 R13=97 R14=98 R15=95

Photo Parameters:

Flux = 945.4 lm Eff. : 91.36 lm/W Fe = 3.437 W Scotopic:1395.2 S/P:1.4757

Electrical parameters:

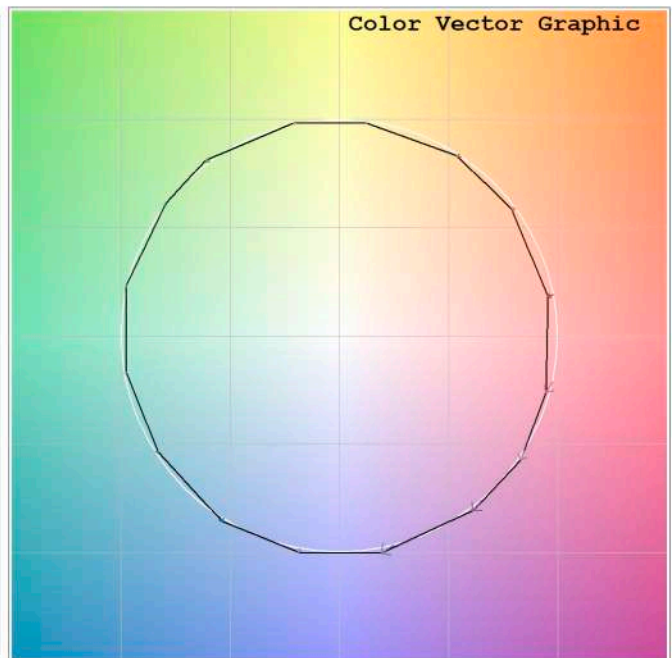
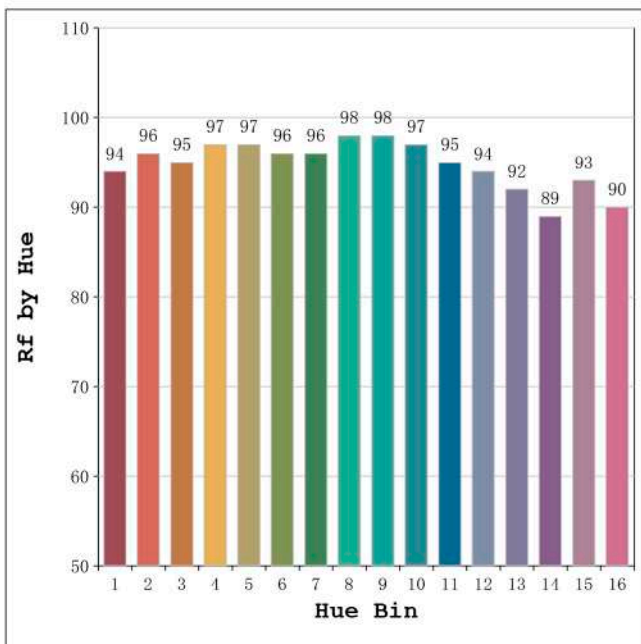
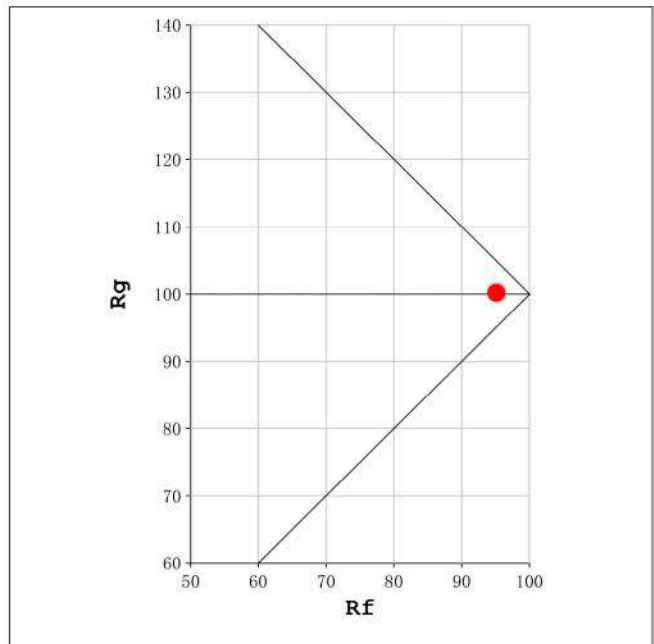
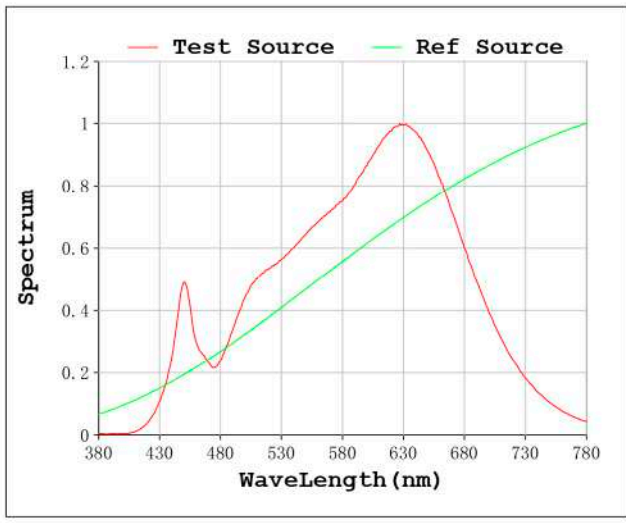
V = 11.998 V I = 0.8625 A P = 10.35 W PF = 1.000

Status: Integral T = 1205 ms Ip = 38430 (59%)

Model:Ecoled Avila pro 3000K
 Tester:Sergio Carneros
 Temperature:25Deg
 Manufacturer:Luz Negra.S.L

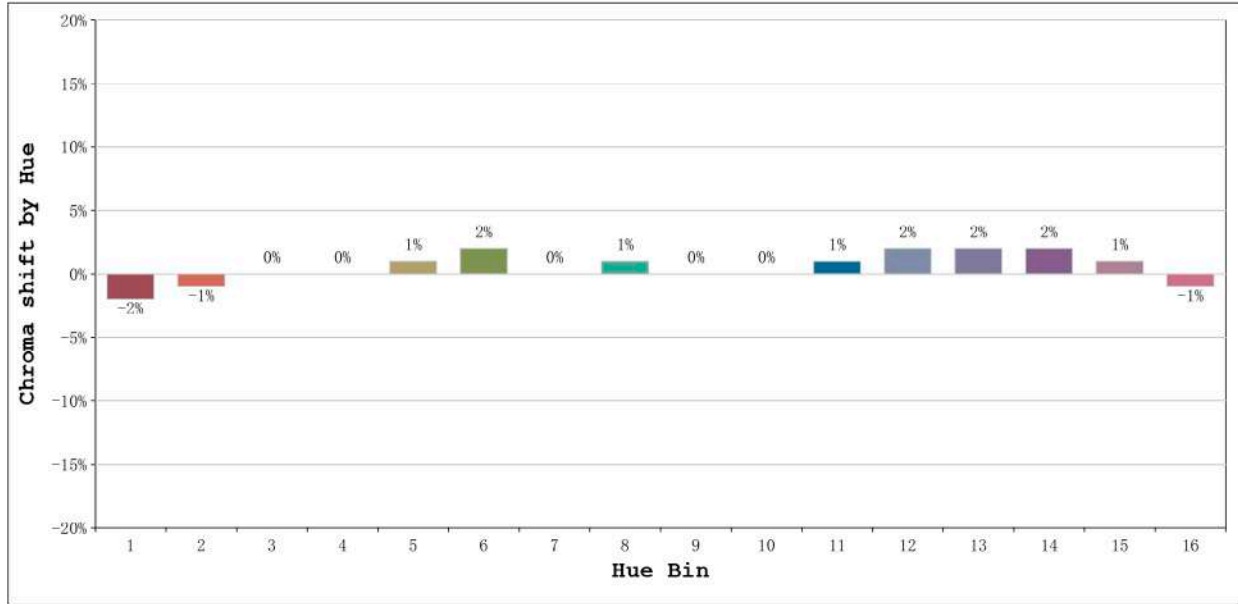
Number: 32.077
 Date:26-5-2021
 Humidity:57%
 Remarks:100cm Tira flexible

Rf: 95 CCT: 3082 K u': 0.2474
Rg: 100 Duv: 0.0010 v': 0.5212



Model:Ecoled Avila pro 3000K
Tester:Sergio Carneros
Temperature:25Deg
Manufacturer:Luz Negra.S.L

Number: 32.077
Date:26-5-2021
Humidity:57%
Remarks:100cm Tira flexible

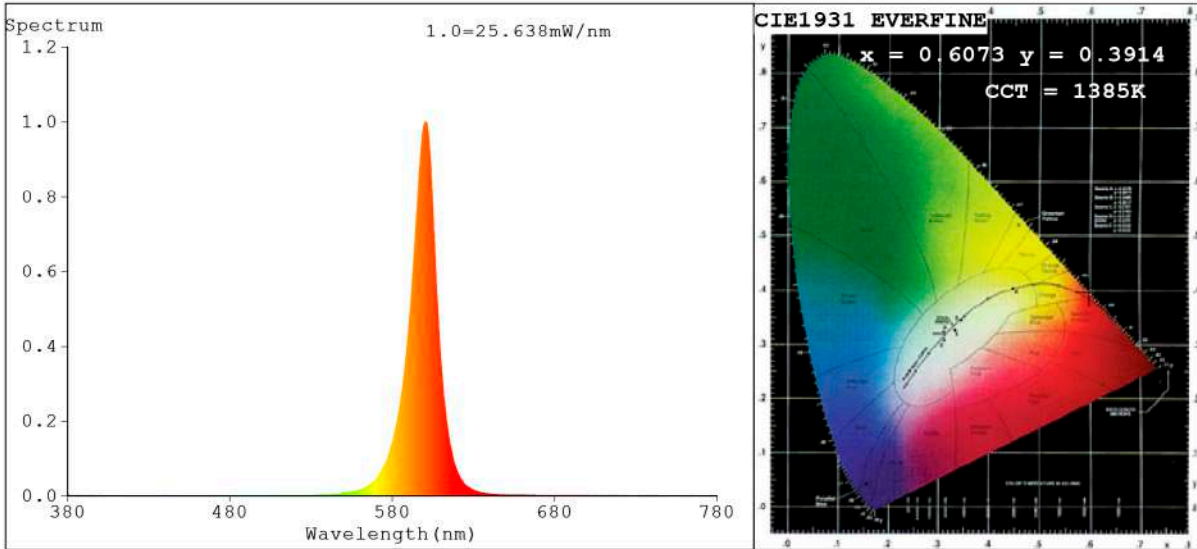


Hue Bin	Hue Angle	Rf	Graphic shift(%)	
			Chroma	Hue
1	0.0° - 22.5°	94	-2	0
2	22.5° - 45.0°	96	-1	1
3	45.0° - 67.5°	95	0	2
4	67.5° - 90.0°	97	0	0
5	90.0° - 112.5°	97	1	1
6	112.5° - 135.0°	96	2	1
7	135.0° - 157.5°	96	0	-1
8	157.5° - 180.0°	98	1	0
9	180.0° - 202.5°	98	0	0
10	202.5° - 225.0°	97	0	1
11	225.0° - 247.5°	95	1	2
12	247.5° - 270.0°	94	2	0
13	270.0° - 292.5°	92	2	-5
14	292.5° - 315.0°	89	2	-5
15	315.0° - 337.5°	93	1	-3
16	337.5° - 360.0°	90	-1	-4

Model:Ecoled Avila pro 3000K
Tester:Sergio Carneros
Temperature:25Deg
Manufacturer:Luz Negra.S.L

Number: 32.077
Date:26-5-2021
Humidity:57%
Remarks:100cm Tira flexible

Spectrum Test Report



Color Parameters:

Chromaticity Coordinate: $x=0.6073$ $y=0.3914$ / $u'=0.3747$ $v'=0.5434$
 CCT=1385K (Duv=-0.0025) Dominant WL:Ld =596.0nm Purity=99.8%
 Ratio:R=40.6% G=59.4% B=0.0%; Peak WL:Lp=600.7nm FWHM=16.8nm
 Render Index:Ra=17.0 CRI=17.8 TM30:Rf=1 Rg=7
 R1 =0 R2 =61 R3 =17 R4 =0 R5 =0 R6 =59 R7 =0
 R8 =0 R9 =0 R10=44 R11=0 R12=21 R13=0 R14=48 R15=0

Photo Parameters:

Flux = 236.4 lm Eff. : 20.77 lm/W Fe = 534.9 mW Scotopic:46.224 S/P:0.19557

Electrical parameters:

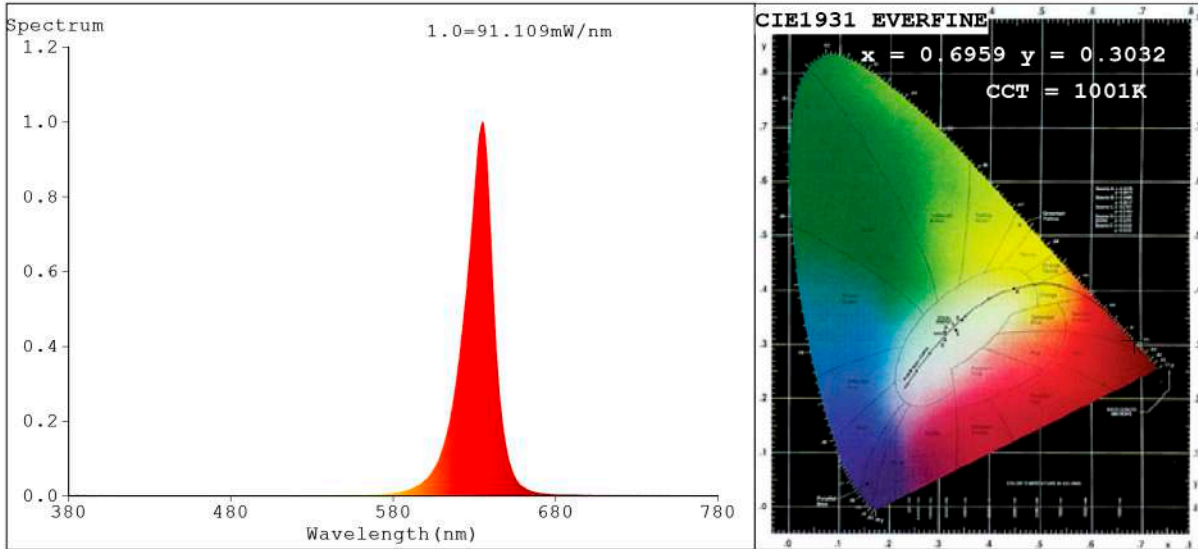
V = 11.998 V I = 0.9486 A P = 11.38 W PF = 1.000

Status: Integral T = 718 ms Ip = 48751 (74%)

Model:Ecoled Ávila Ámbar
 Tester:Sergio Carneros
 Temperature:20Deg
 Manufacturer:Luz Negra

Number: 32.079
 Date:2021-10-07 09:57:50
 Humidity:50%
 Remarks:100cm de tira flexible

Spectrum Test Report



Color Parameters:

Chromaticity Coordinate: $x=0.6959$ $y=0.3032$ / $u'=0.5305$ $v'=0.5201$
 CCT=1001K (Duv=-0.0830) Dominant WL: $L_d = 622.8\text{nm}$ Purity=99.7%
 Ratio: R=94.8% G=5.2% B=0.0%; Peak WL: $L_p = 635.2\text{nm}$ FWHM=17.9nm
 Render Index: $R_a = 30.6$ CRI=35.4 TM30: $R_f = 34$ $R_g = -1$ $L_{av} = 632.5\text{nm}$
 R1 =13 R2 =79 R3 =38 R4 =0 R5 =10 R6 =90 R7 =15
 R8 =0 R9 =0 R10=74 R11=0 R12=79 R13=34 R14=64 R15=0

Photo Parameters:

Flux = 364.7 lm Eff. : 32.43 lm/W $F_e = 1.990$ W Scotopic:20.878 S/P:0.057244

Electrical parameters:

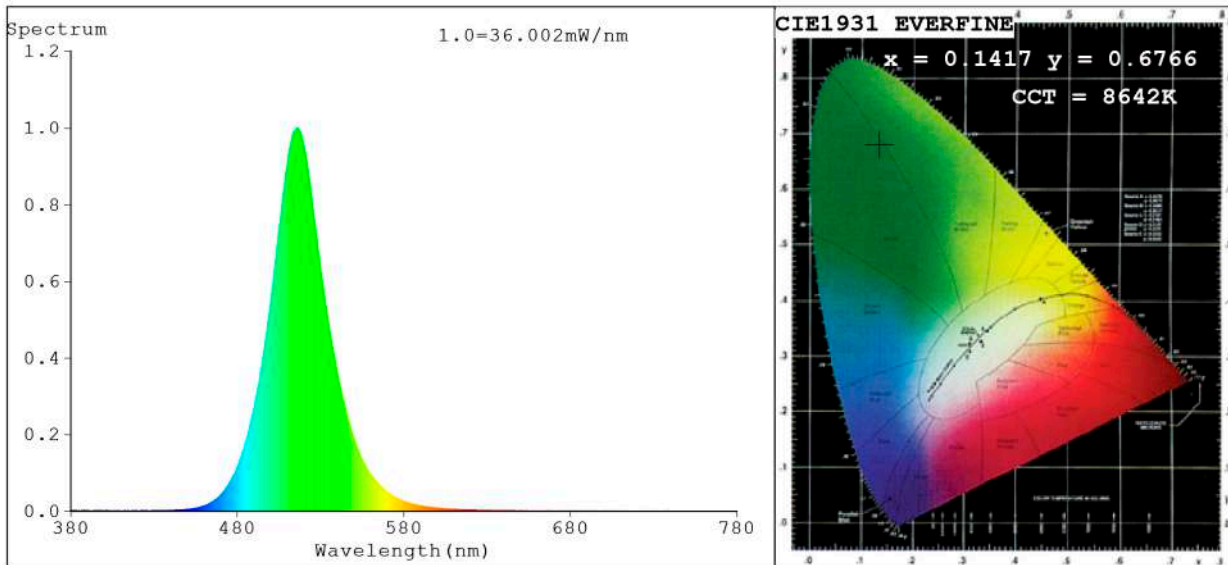
V = 11.998 V I = 0.9372 A P = 11.24 W PF = 1.000

Status: Integral T = 253 ms $I_p = 36794$ (56%)

Model: Ecoled Ávila pro rojo
 Tester: Sergio Carneros
 Temperature: 25Deg
 Manufacturer: Luz Negra.S.L

Number: 32.080
 Date: 26-5-2021
 Humidity: 57%
 Remarks: 100cm Tira flexible

Spectrum Test Report



Color Parameters:

Chromaticity Coordinate: $x=0.1417$ $y=0.6766$ / $u'=0.0523$ $v'=0.5620$
 CCT=8642K (Duv=0.1599) Dominant WL:Ld =517.7nm Purity=69.4%
 Ratio:R=0.3% G=94.5% B=5.2%; Peak WL:Lp=516.0nm FWHM=35.7nm
 Render Index:Ra=0.8 CRI=3.8 TM30:Rf=1 Rg=10 Lav=517.3nm
 R1 =0 R2 =1 R3 =0 R4 =0 R5 =0 R6 =0 R7 =6
 R8 =0 R9 =0 R10=0 R11=0 R12=0 R13=0 R14=47 R15=0

Photo Parameters:

Flux = 652.9 lm Eff. : 63.99 lm/W Fe = 1.529 W Scotopic:2192.9 S/P:3.3586

Electrical parameters:

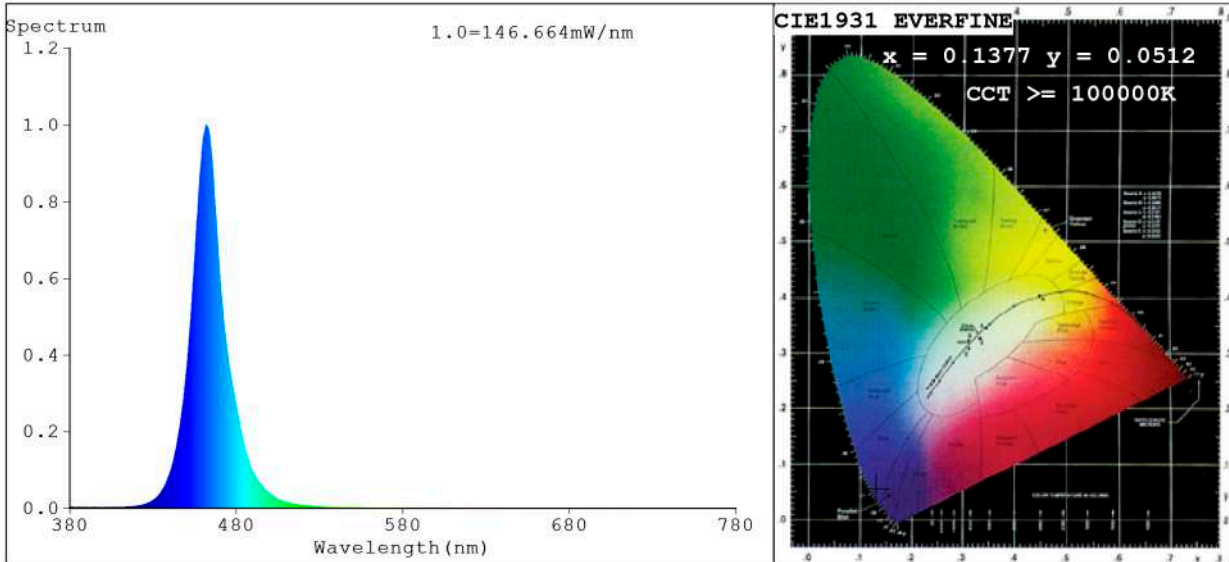
V = 11.998 V I = 0.8504 A P = 10.20 W PF = 1.000

Status: Integral T = 602 ms Ip = 44613 (68%)

Model:Ecoled Avila pro verde
 Tester:Sergio Carneros
 Temperature:25Deg
 Manufacturer:Luz Negra.S.L

Number: 32.081
 Date:26-5-2021
 Humidity:57%
 Remarks:100cm Tira flexible

Spectrum Test Report



Color Parameters:

Chromaticity Coordinate: $x=0.1377$ $y=0.0512$ / $u'=0.1650$ $v'=0.1381$
 CCT=100000K (Duv=0.1746) Dominant WL:Ld =466.4nm Purity=97.5%
 Ratio:R=0.3% G=12.5% B=87.2%; Peak WL:Lp=462.1nm FWHM=19.2nm
 Render Index:Ra=0.1 CRI=0.1 TM30:Rf=0 Rg=53
 R1 =0 R2 =0 R3 =0 R4 =0 R5 =1 R6 =0 R7 =0
 R8 =0 R9 =0 R10=0 R11=0 R12=0 R13=0 R14=0 R15=0

Photo Parameters:

Flux = 217.2 lm Eff. : 19.76 lm/W Fe = 3.598 W Scotopic:3715.5 S/P:17.104

Electrical parameters:

V = 11.998 V I = 0.9164 A P = 10.99 W PF = 1.000

Status: Integral T = 142 ms Ip = 32920 (50%)

Model:Ecoled Ávila Azul
 Tester:Sergio Carneros
 Temperature:25Deg
 Manufacturer:Luz Negra

Number: 32.078
 Date:2023-01-10 14:40:17
 Humidity:57%
 Remarks:100cm de tira flexible