

MEDIA LUMINOSIDAD

ÁVILA

TIRAS FLEXIBLES

Ref: 32.020
Ref: 32.021

3000°K
Azul

Tira flexible serie "PRO"

IP20 nanocoating con 60 leds/metro 2835SMD.

Requiere uso de led profile para disipación.

Cinta térmica disipadora incluida.

PCB 6mm

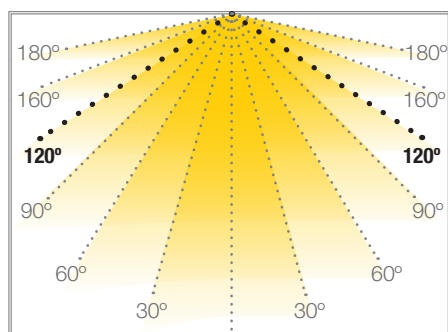
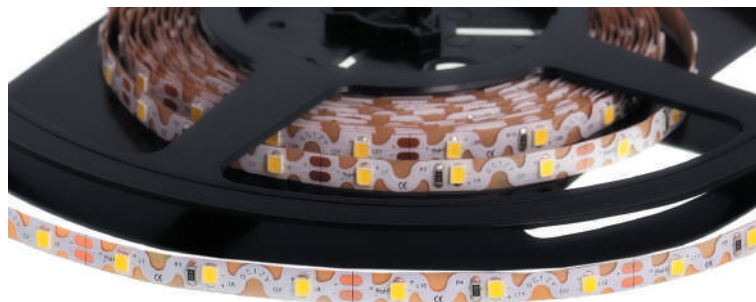
Uso diario máximo recomendado: 18h

Conexión máxima en circuito abierto: 2.5m

Conexión máxima en circuito cerrado: 5m

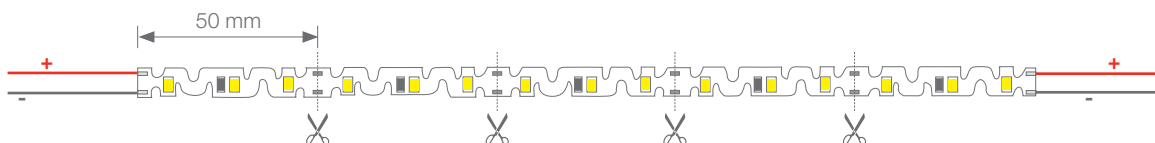
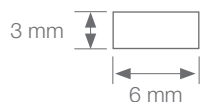
Vida útil: 50.000h*

*En función de la disipación del perfil, de las horas diarias trabajadas y de la temperatura externa ambiental de trabajo.



Potencia (W)	12W/m
Voltaje (V)	12V
Tipo Led	SMD2835
Lumens (3000°K)	920 Lm/m
Lumens (Azul)	177 Lm/m
CRI	>55
Emisión de luz	120°
Estancqueidad (IP)	IP20
Nº leds/m	60
Medidas	5000x6x3mm
Cortable	cada 50mm
PCB	6mm
Temperatura trabajo	-20°C / +40°C
Apto para	interior/exterior
Embalaje	1 rollo/5m
Garantía	3 años

Aprobado por: 

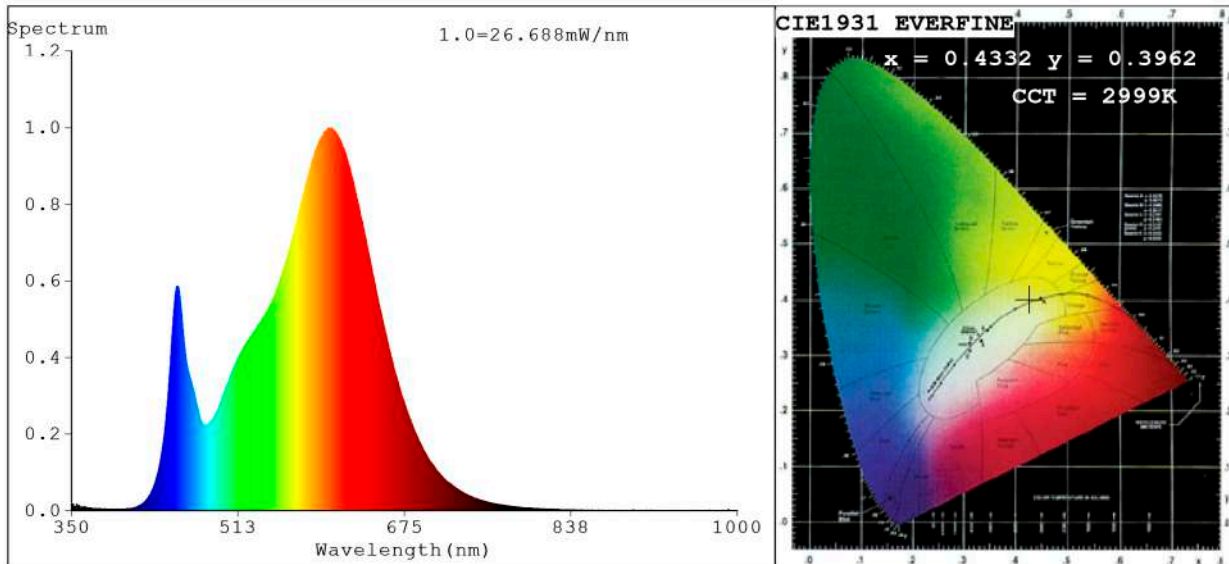


BARCELONA
C/ Carles Buhigues, 13
08420 Canovelles
Info@luznegra.net
Tel: +34 938 402 598

MADRID
C/ Adaptación, 27
28906 Getafe
centro@luznegra.net
Tel: +34 916 416 081

PARIS
113 Avenue Joffre
77450 Esbly
france@luznegra.net
Tel: +33 (0) 160 426 585

Spectrum Test Report



Color Parameters:

Chromaticity Coordinate: $x=0.4332$ $y=0.3962$ $u'=0.2516$ $v'=0.5177$
 CCT=2999K(Duv=-0.0027) Dominant WL:Ld =583.8nm Purity=48.9%
 Ratio:R=23.1% G=74.1% B=2.9%;;Peak WL:Lp=601.2nm FWHM=116.9nm
 Render Index:Ra=81.9 CRI=76.9 TM30:Rf=81 Rg=96
 R1 =81 R2 =93 R3 =93 R4 =79 R5 =82 R6 =91 R7 =80
 R8 =56 R9 =3 R10=84 R11=78 R12=74 R13=84 R14=97 R15=73

Photo Parameters:

Flux = 1268 lm Eff. : 111.03 lm/W Fe = 3.865 W Scotopic:1745.2 S/P:1.3758

Electrical parameters:

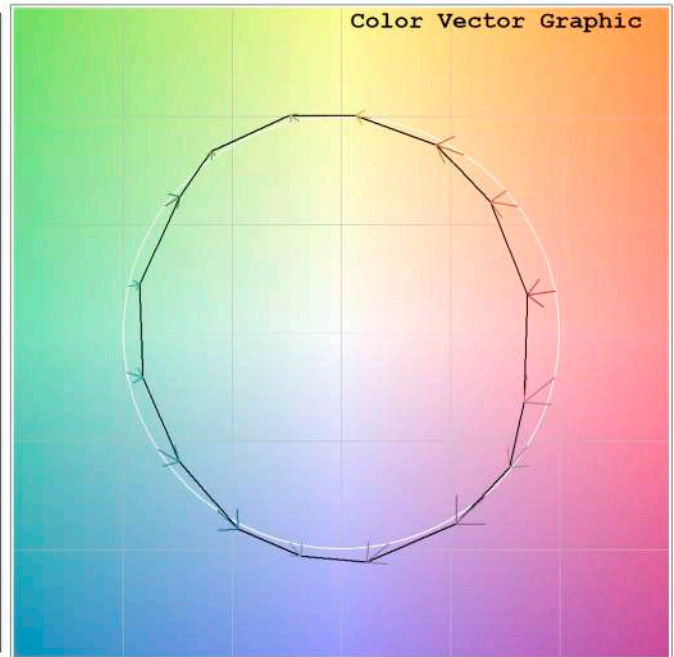
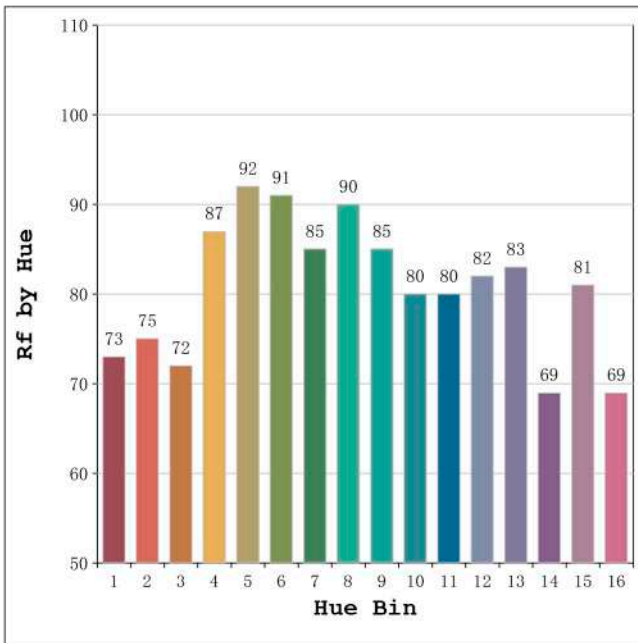
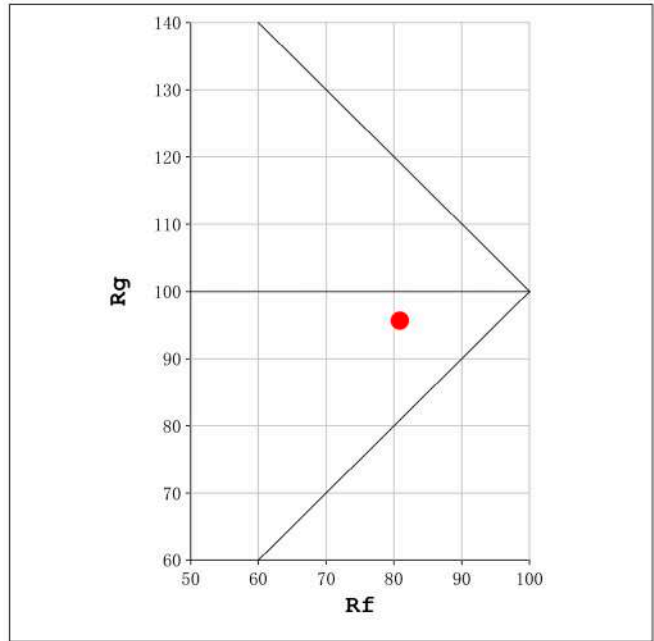
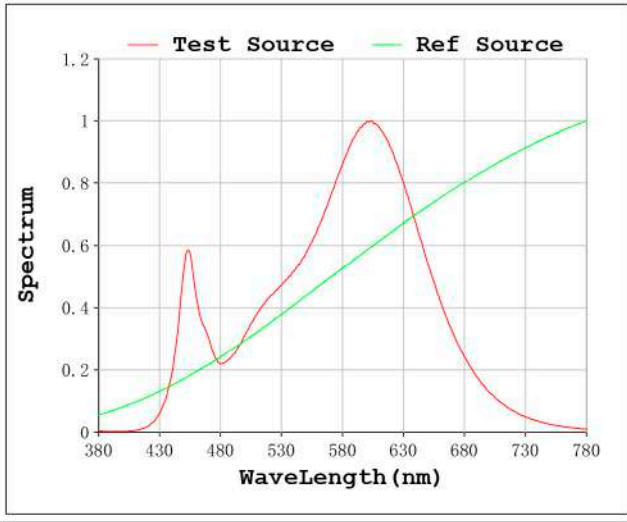
V = 11.998 V I = 0.9522 A P = 11.42 W PF = 1.000

Status: Integral T = 804 ms Ip = 38185 (58%)

Model:Ecoled ávila 3000K
 Tester:Sergio Carneros
 Temperature:21Deg
 Manufacturer:Luz Negra S.L

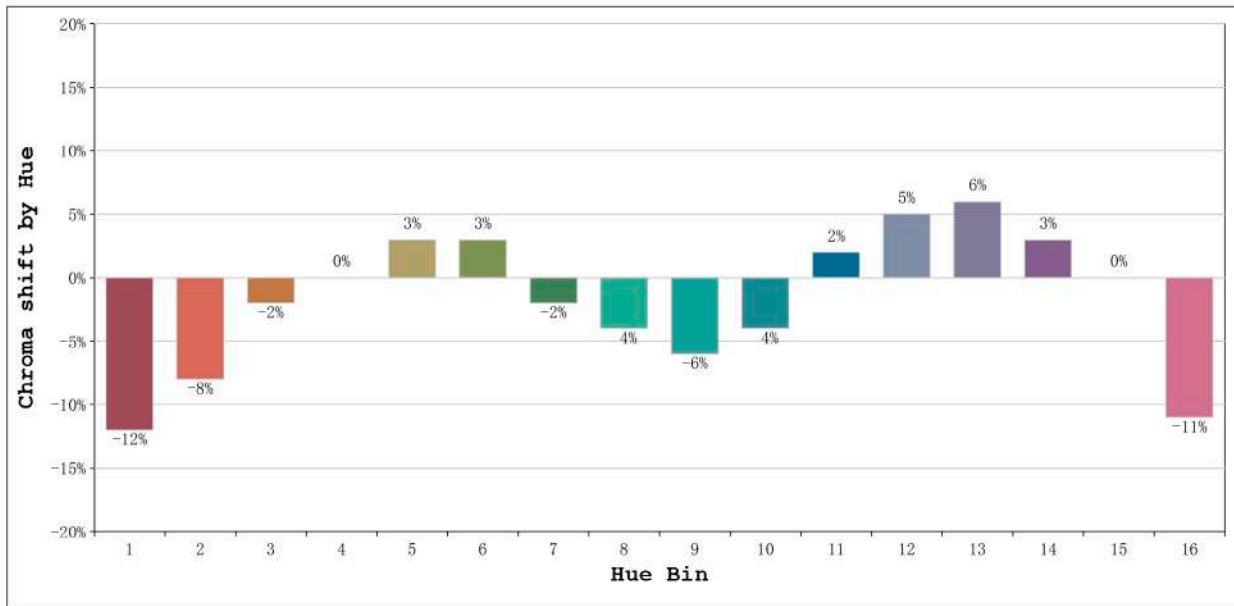
Number: 32.020
 Date:25-5-2020
 Humidity:58%
 Remarks:100cm de tira flexible

Rf: 81 CCT: 2999 K u': 0.2516
Rg: 96 Duv: -0.0027 v': 0.5177



Model:Ecoled ávila 3000K
Tester:Sergio Carneros
Temperature:21Deg
Manufacturer:Luz Negra S.L

Number: 32.020
Date:25-5-2020
Humidity:58%
Remarks:100cm de tira flexible

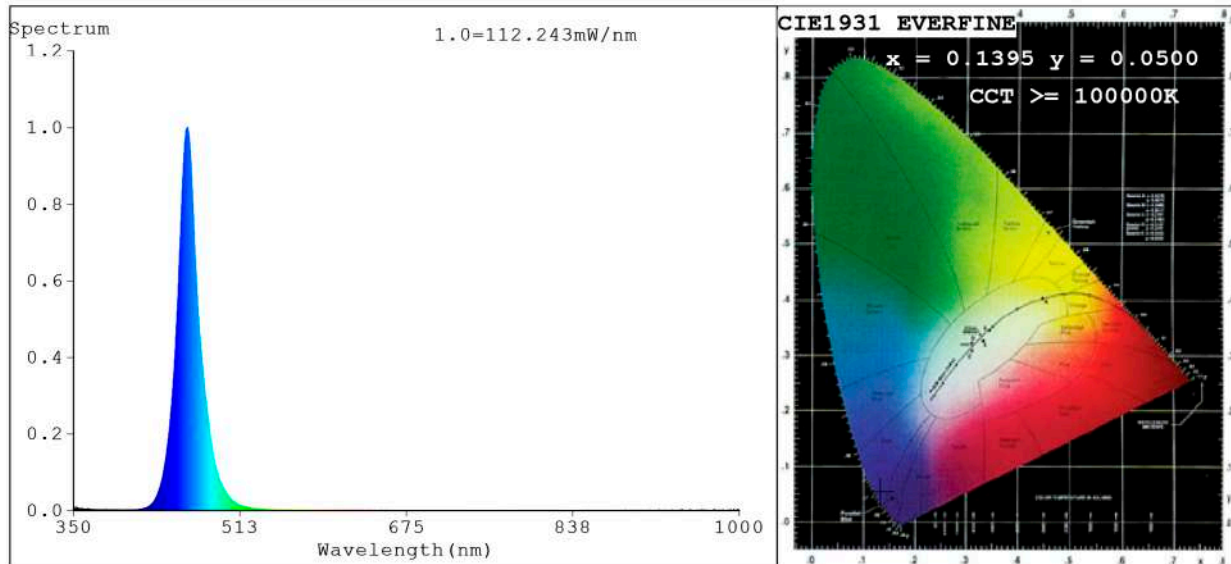


Hue Bin	Hue Angle	Rf	Graphic shift(%)	
			Chroma	Hue
1	0.0° - 22.5°	73	-12	1
2	22.5° - 45.0°	75	-8	9
3	45.0° - 67.5°	72	-2	13
4	67.5° - 90.0°	87	0	7
5	90.0° - 112.5°	92	3	4
6	112.5° - 135.0°	91	3	-1
7	135.0° - 157.5°	85	-2	-6
8	157.5° - 180.0°	90	-4	-1
9	180.0° - 202.5°	85	-6	4
10	202.5° - 225.0°	80	-4	10
11	225.0° - 247.5°	80	2	12
12	247.5° - 270.0°	82	5	6
13	270.0° - 292.5°	83	6	-11
14	292.5° - 315.0°	69	3	-17
15	315.0° - 337.5°	81	0	-12
16	337.5° - 360.0°	69	-11	-13

Model:Ecoled ávila 3000K
 Tester:Sergio Carneros
 Temperature:21Deg
 Manufacturer:Luz Negra S.L

Number: 32.020
 Date:25-5-2020
 Humidity:58%
 Remarks:100cm de tira flexible

Spectrum Test Report



Color Parameters:

Chromaticity Coordinate: $x=0.1395$ $y=0.0500$ / $u'=0.1680$ $v'=0.1354$
 CCT=100000K (Duv=0.1761) Dominant WL:Ld =465.7nm Purity=97.3%
 Ratio:R=0.5% G=13.8% B=85.7% ; Peak WL:Lp=461.4nm FWHM=21.1nm
 Render Index:Ra=0.3 CRI=0.2 TM30:Rf=0 Rg=61
 R1 =0 R2 =0 R3 =0 R4 =0 R5 =3 R6 =0 R7 =0
 R8 =0 R9 =0 R10=0 R11=0 R12=0 R13=0 R14=0 R15=1

Photo Parameters:

Flux = 177.4 lm Eff. : 16.38 lm/W Fe = 2.997 W Scotopic:3023.3 S/P:17.042

Electrical parameters:

V = 11.998 V I = 0.9026 A P = 10.83 W PF = 1.000

Status: Integral T = 221 ms Ip = 43724 (67%)

Model:Ecoled Ávila Azul
 Tester:Sergio Carneros
 Temperature:25Deg
 Manufacturer:Luz Negra S.L

Number: 32.021
 Date:25-5-2021
 Humidity:57%
 Remarks:100cm de tira flexible