

ALTA LUMINOSIDAD

Ref: 33.188 6000°K
 Ref: 33.189 4000°K
 Ref: 33.190 2800°K

Tira flexible serie "PRO WATERPROOF DUO"

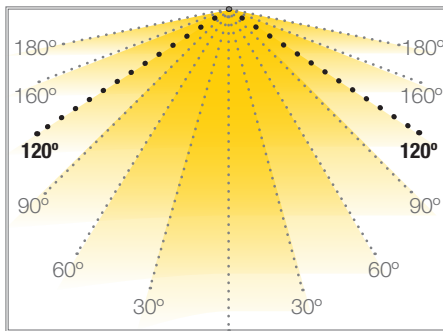
IP67 con 240 leds/metro 2216MD.

Cinta térmica disipadora incluida.

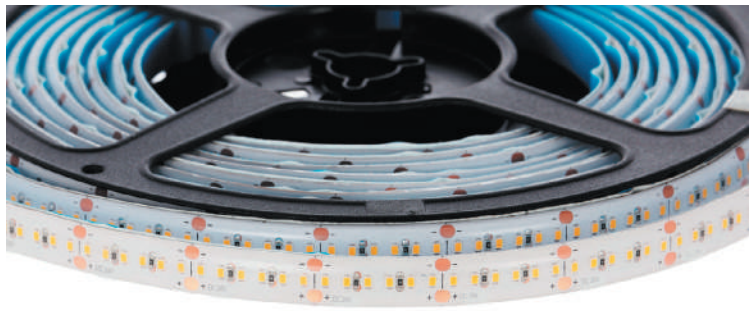
PCB 10mm

Uso diario máximo recomendado: 18h
 Conexión máxima en circuito abierto: 3m
 Conexión máxima en circuito cerrado: 6m
 Vida útil: 50.000h*

*En función de la disipación del perfil, de las horas diarias trabajadas y de la temperatura externa ambiental de trabajo.



CANOVELLES PRO

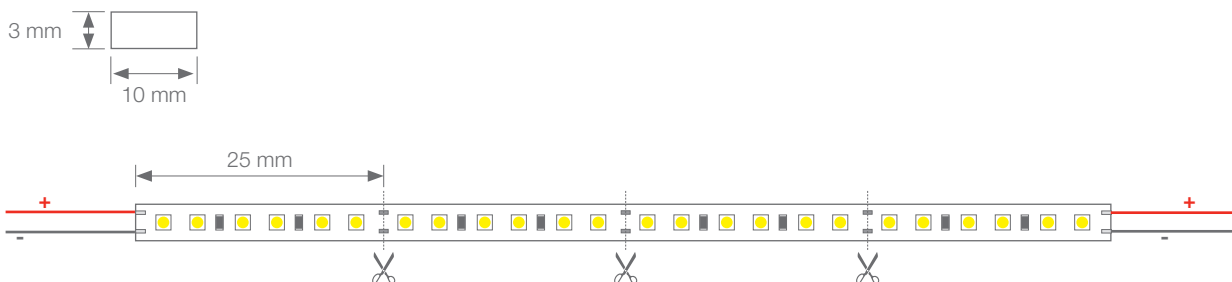


TIRAS FLEXIBLES



Potencia (W)	17W/m
Voltaje (V)	24V
Tipo Led	SMD2216
Lumens (6000°K)	1631 Lm/m
Lumens (4000°K)	1747 Lm/m
Lumens (2800°K)	1777 Lm/m
IRC	>85
Emisión de luz	120°
Estanqueidad (IP)	IP67 "DUO"
Nº leds/m	240
Medidas	5000x10x3mm
Cortable	cada 25mm
PCB	10mm
Temperatura trabajo	-20°C / +40°C
Apto para	interior/exterior
Embalaje	1 rollo/5m
Garantía	3 años

Aprobado por: 

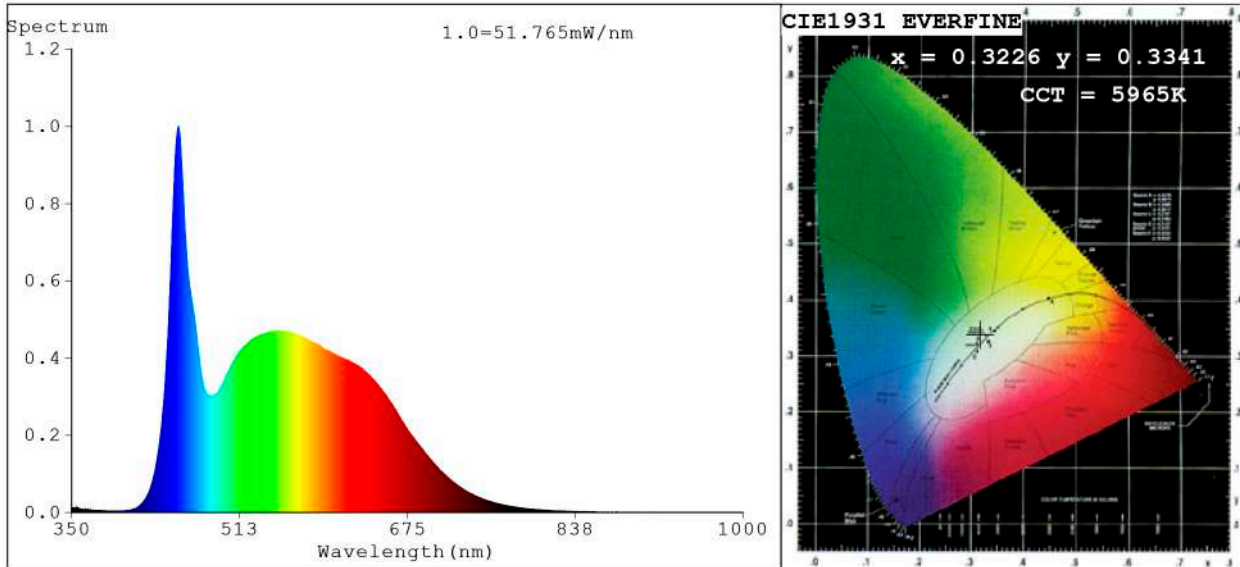


BARCELONA
 C/ Carles Buhigues, 13
 08420 Canovelles
 Info@luznegra.net
 Tel: +34 938 402 598

MADRID
 C/ Minas, 35-37
 28923 Alcorcón
 centro@luznegra.net
 Tel: +34 916 416 081

PARIS
 113 Avenue Joffre
 77450 Esbly
 france@luznegra.net
 Tel: +33 (0) 160 426 585

Spectrum Test Report



Color Parameters:

Chromaticity Coordinate:x=0.3226 y=0.3341/u'=0.2028 v'=0.4725
 CCT=5965K(Duv=0.0010) Dominant WL:Ld =492.7nm Purity=3.6%
 Ratio:R=15.5% G=78.4% B=6.1%; Peak WL:Lp=453.6nm FWHM=25.2nm
 Render Index:Ra=92.3 CRI=88.8 TM30:Rf=88 Rg=99
 R1 =93 R2 =96 R3 =95 R4 =91 R5 =91 R6 =90 R7 =94
 R8 =88 R9 =69 R10=87 R11=91 R12=66 R13=94 R14=97 R15=92

Photo Parameters:

Flux = 1631 lm Eff. : 87.25 lm/W Fe = 5.809 W Scotopic:3692.3 S/P:2.2639

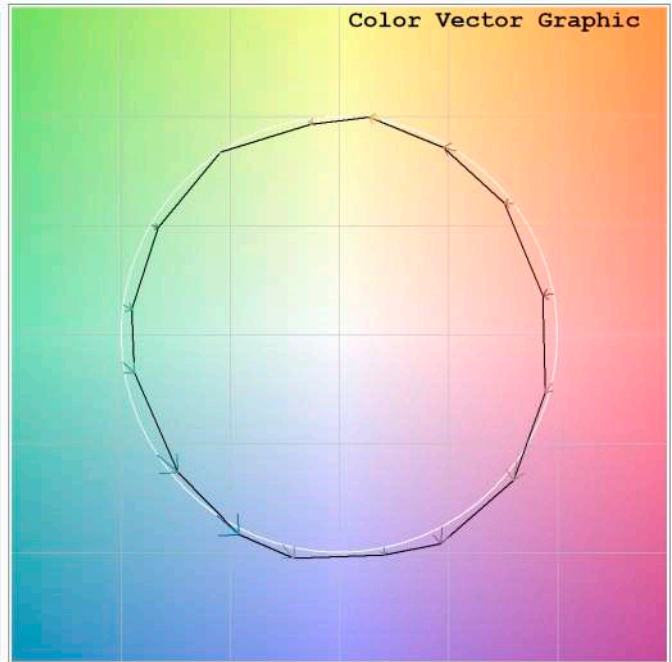
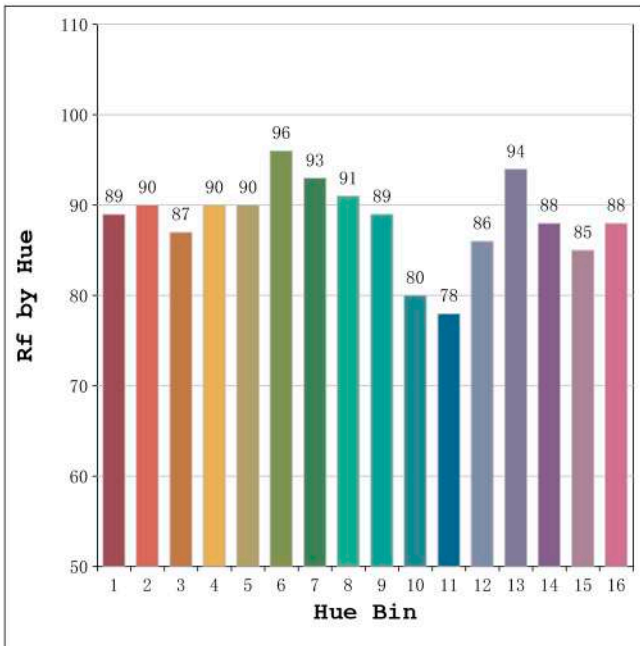
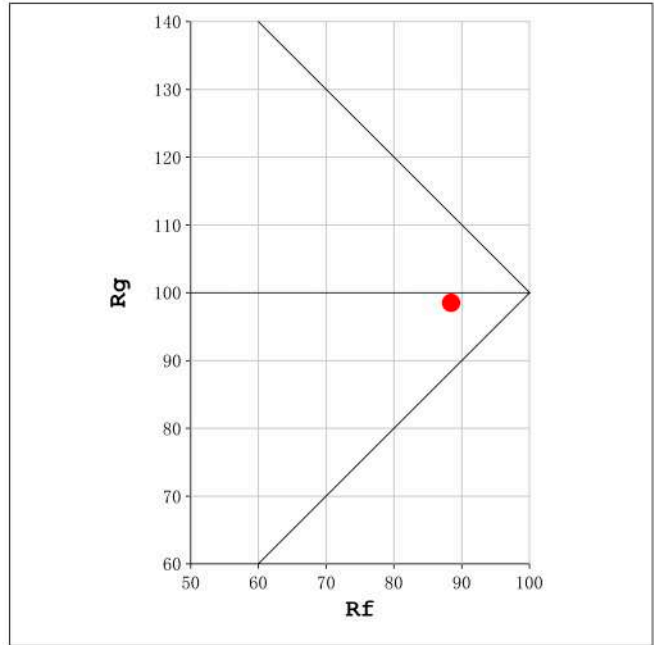
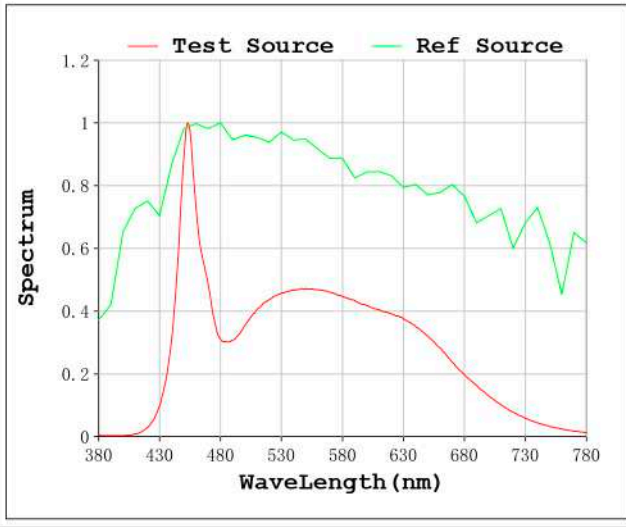
Electrical parameters:

V = 23.998 V I = 0.7789 A P = 18.69 W PF = 1.000

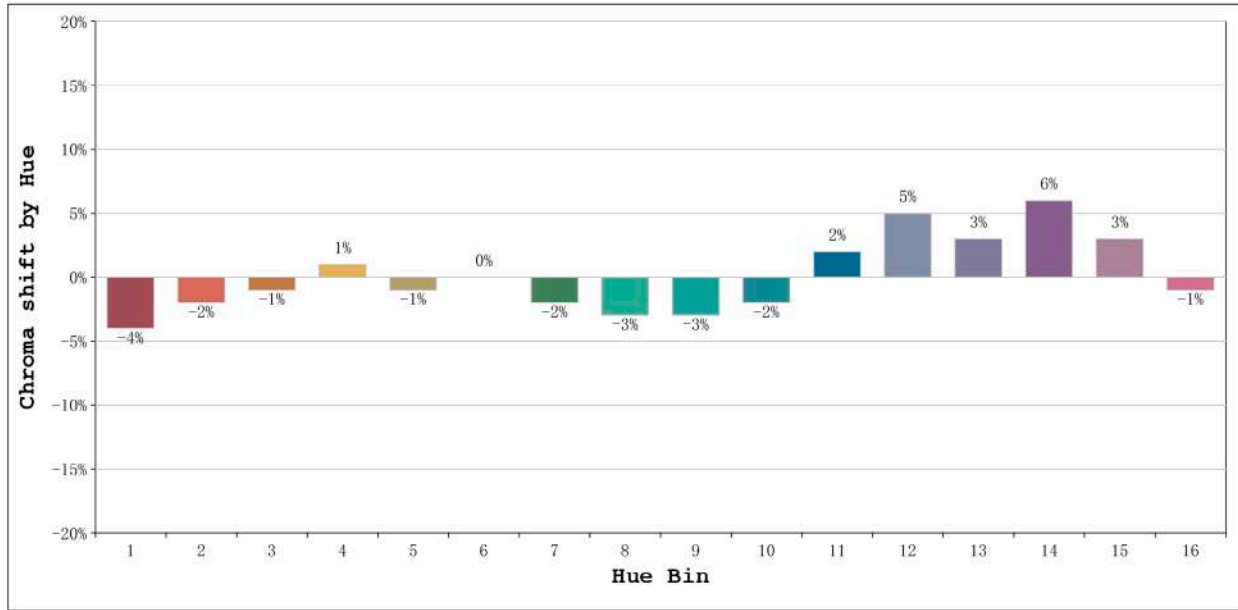
Status: Integral T = 574 ms Ip = 47062 (72%)

Model:Ecoled Canovelles pro 6000K Number: 33.188
 Tester:Sergio Carneros Date:26-5-2021
 Temperature:25Deg Humidity:57%
 Manufacturer:Luz Negra S.L Remarks:100cm de tira flexible

Rf: 88 CCT: 5965 K u': 0.2028
Rg: 99 Duv: 0.0010 v': 0.4725



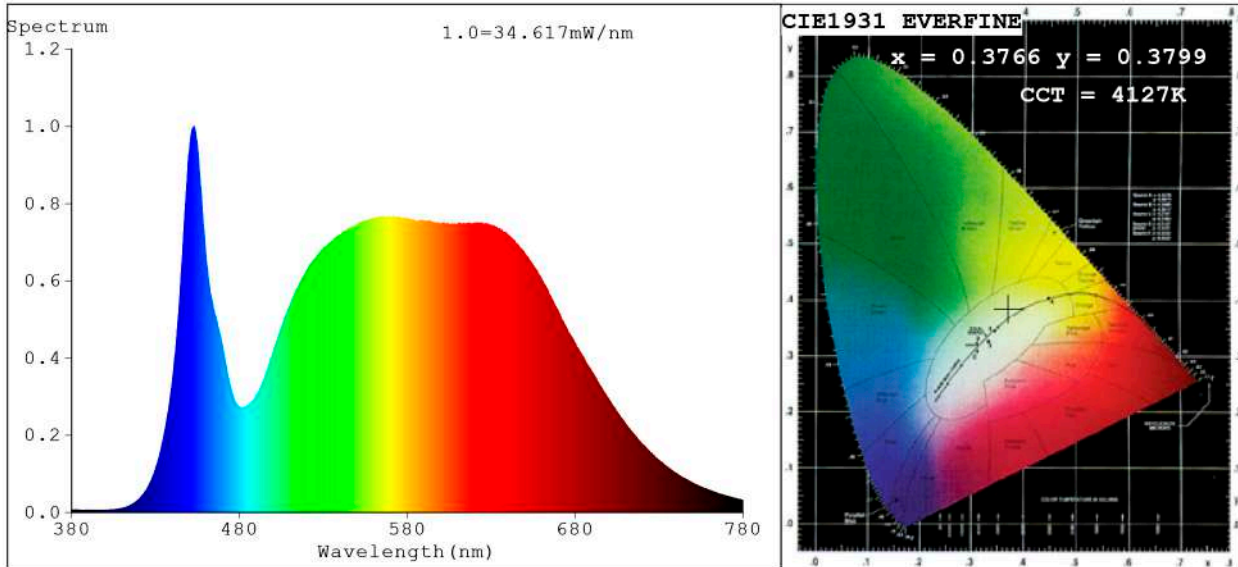
Model:Ecoled Canovelles pro 6000K Number: 33.188
 Tester:Sergio Carneros Date:26-5-2021
 Temperature:25Deg Humidity:57%
 Manufacturer:Luz Negra S.L Remarks:100cm de tira flexible



Hue Bin	Hue Angle	Rf	Graphic shift(%)	
			Chroma	Hue
1	0.0° - 22.5°	89	-4	0
2	22.5° - 45.0°	90	-2	3
3	45.0° - 67.5°	87	-1	6
4	67.5° - 90.0°	90	1	5
5	90.0° - 112.5°	90	-1	1
6	112.5° - 135.0°	96	0	0
7	135.0° - 157.5°	93	-2	0
8	157.5° - 180.0°	91	-3	1
9	180.0° - 202.5°	89	-3	5
10	202.5° - 225.0°	80	-2	12
11	225.0° - 247.5°	78	2	13
12	247.5° - 270.0°	86	5	6
13	270.0° - 292.5°	94	3	0
14	292.5° - 315.0°	88	6	-4
15	315.0° - 337.5°	85	3	-7
16	337.5° - 360.0°	88	-1	-4

Model:Ecoled Canovelles pro 6000K Number: 33.188
 Tester:Sergio Carneros Date:26-5-2021
 Temperature:25Deg Humidity:57%
 Manufacturer:Luz Negra S.L Remarks:100cm de tira flexible

Spectrum Test Report



Color Parameters:

Chromaticity Coordinate:x=0.3766 y=0.3799/u'=0.2214 v'=0.5024
 CCT=4127K(Duv=0.0026) Dominant WL:Ld =577.2nm Purity=27.0%
 Ratio:R=18.6% G=77.7% B=3.7%; Peak WL:Lp=452.9nm FWHM=22.7nm
 Render Index:Ra=89.3 CRI=84.6 TM30:Rf=88 Rg=98 Lav=579.0nm
 R1 =89 R2 =91 R3 =91 R4 =89 R5 =87 R6 =86 R7 =95
 R8 =86 R9 =61 R10=77 R11=87 R12=61 R13=89 R14=95 R15=88

Photo Parameters:

Flux = 1747 lm Eff. : 95.26 lm/W Fe = 5.980 W Scotopic:3061.8 S/P:1.7531

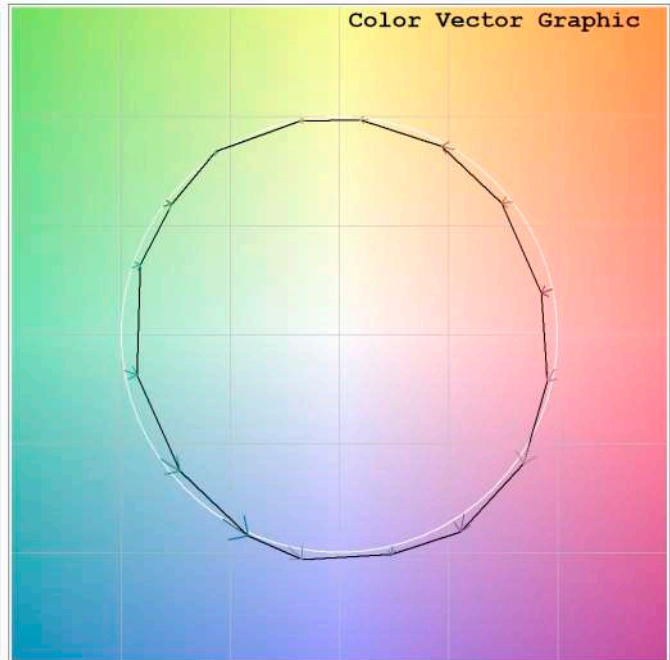
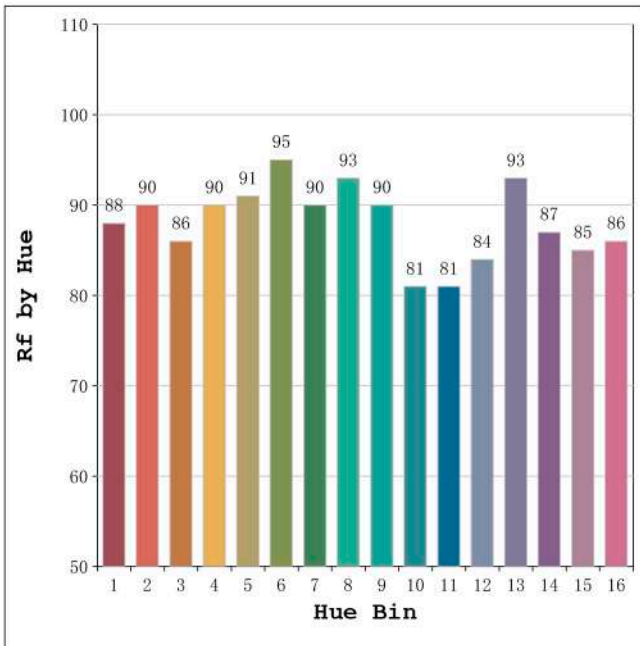
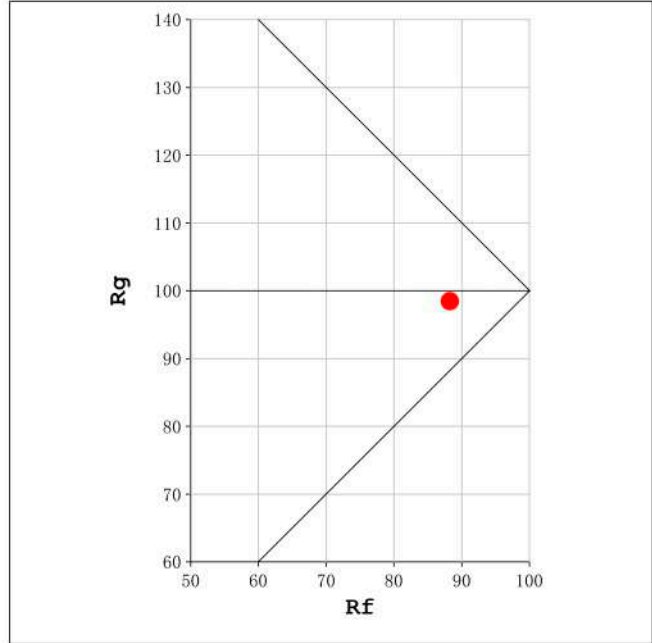
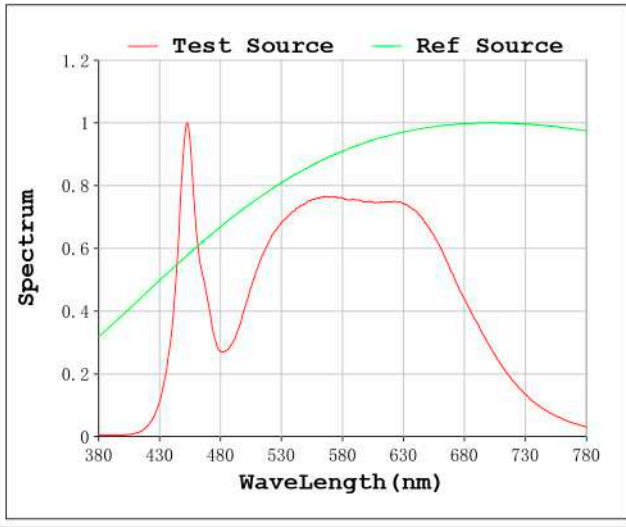
Electrical parameters:

V = 23.998 V I = 0.7640 A P = 18.33 W PF = 1.000

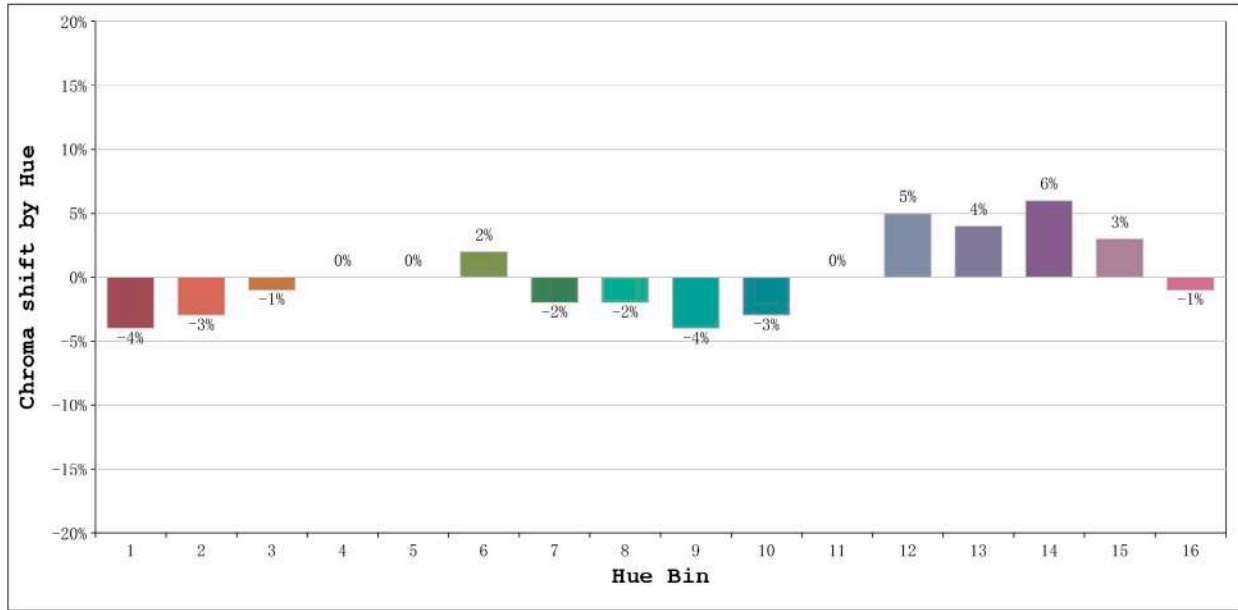
Status: Integral T = 868 ms Ip = 52533 (80%)

Model:Ecoled Canovelles pro 4000K Number: 33.189
 Tester:Sergio Carneros Date:26-5-2021
 Temperature:25Deg Humidity:57%
 Manufacturer:Luz Negra.S.L Remarks:100cm Tira flexible

Rf: 88 CCT: 4127 K u': 0.2214
Rg: 98 Duv: 0.0026 v': 0.5024



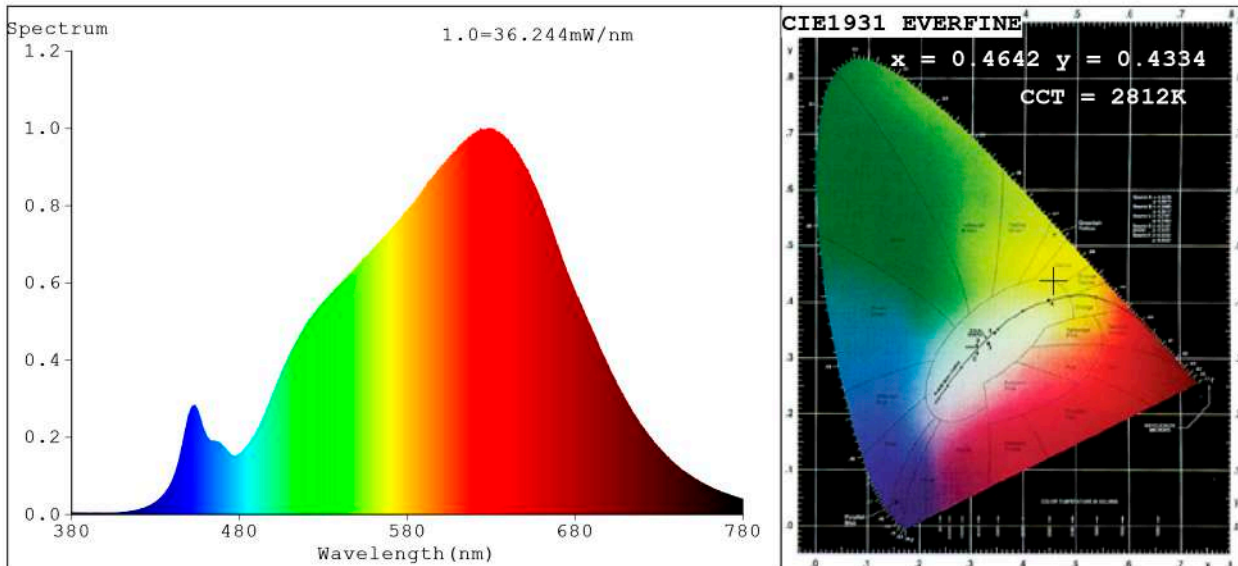
Model:Ecoled Canovelles pro 4000K Number: 33.189
Tester:Sergio Carneros Date:26-5-2021
Temperature:25Deg Humidity:57%
Manufacturer:Luz Negra.S.L Remarks:100cm Tira flexible



Hue Bin	Hue Angle	Rf	Graphic shift(%)	
			Chroma	Hue
1	0.0° - 22.5°	88	-4	0
2	22.5° - 45.0°	90	-3	2
3	45.0° - 67.5°	86	-1	6
4	67.5° - 90.0°	90	0	4
5	90.0° - 112.5°	91	0	3
6	112.5° - 135.0°	95	2	0
7	135.0° - 157.5°	90	-2	-2
8	157.5° - 180.0°	93	-2	-1
9	180.0° - 202.5°	90	-4	3
10	202.5° - 225.0°	81	-3	10
11	225.0° - 247.5°	81	0	14
12	247.5° - 270.0°	84	5	7
13	270.0° - 292.5°	93	4	0
14	292.5° - 315.0°	87	6	-5
15	315.0° - 337.5°	85	3	-8
16	337.5° - 360.0°	86	-1	-5

Model:Ecoled Canovelles pro 4000K Number: 33.189
 Tester:Sergio Carneros Date:26-5-2021
 Temperature:25Deg Humidity:57%
 Manufacturer:Luz Negra.S.L Remarks:100cm Tira flexible

Spectrum Test Report



Color Parameters:

Chromaticity Coordinate: x=0.4642 y=0.4334/u'=0.2553 v'=0.5364
 CCT=2812K (Duv=0.0078) Dominant WL:Ld =581.4nm Purity=69.5%
 Ratio:R=24.7% G=73.3% B=2.0%; Peak WL:Lp=629.0nm FWHM=166.3nm
 Render Index:Ra=90.2 CRI=86.0 TM30:Rf=90 Rg=93 Lav=608.8nm
 R1 =90 R2 =92 R3 =93 R4 =91 R5 =88 R6 =89 R7 =96
 R8 =83 R9 =56 R10=80 R11=91 R12=70 R13=89 R14=96 R15=85

Photo Parameters:

Flux = 1777 lm Eff. : 98.72 lm/W Fe = 6.124 W Scotopic:2219.1 S/P:1.2486

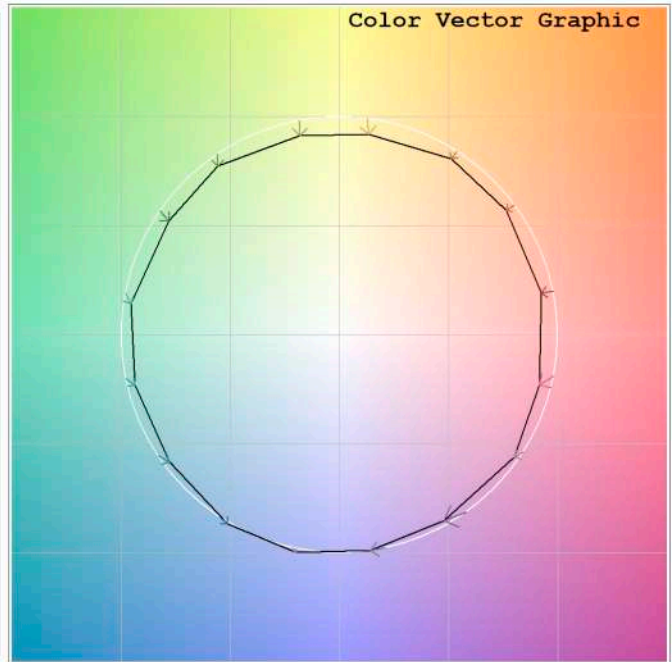
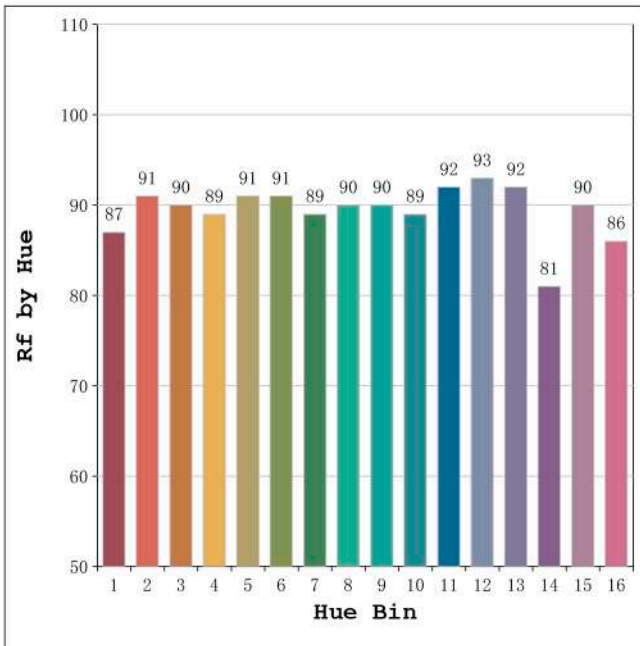
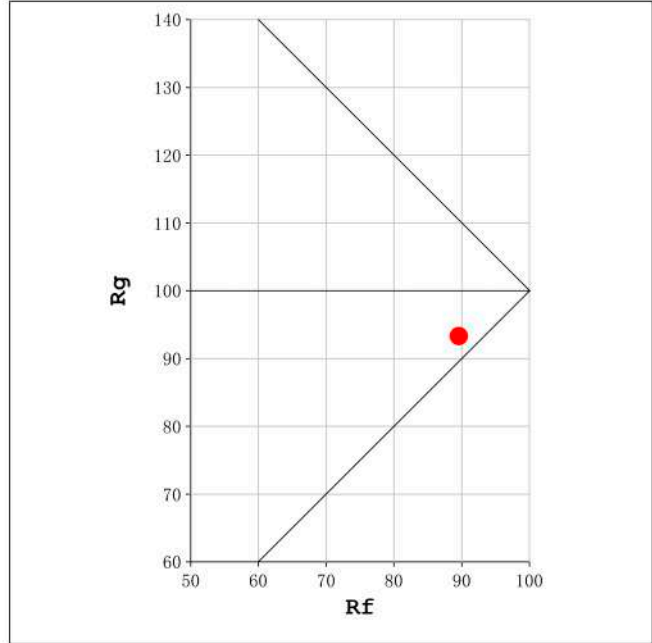
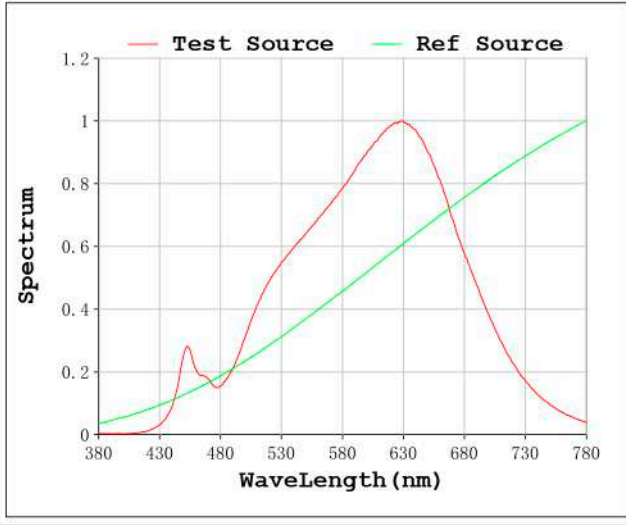
Electrical parameters:

V = 23.998 V I = 0.7502 A P = 18.00 W PF = 1.000

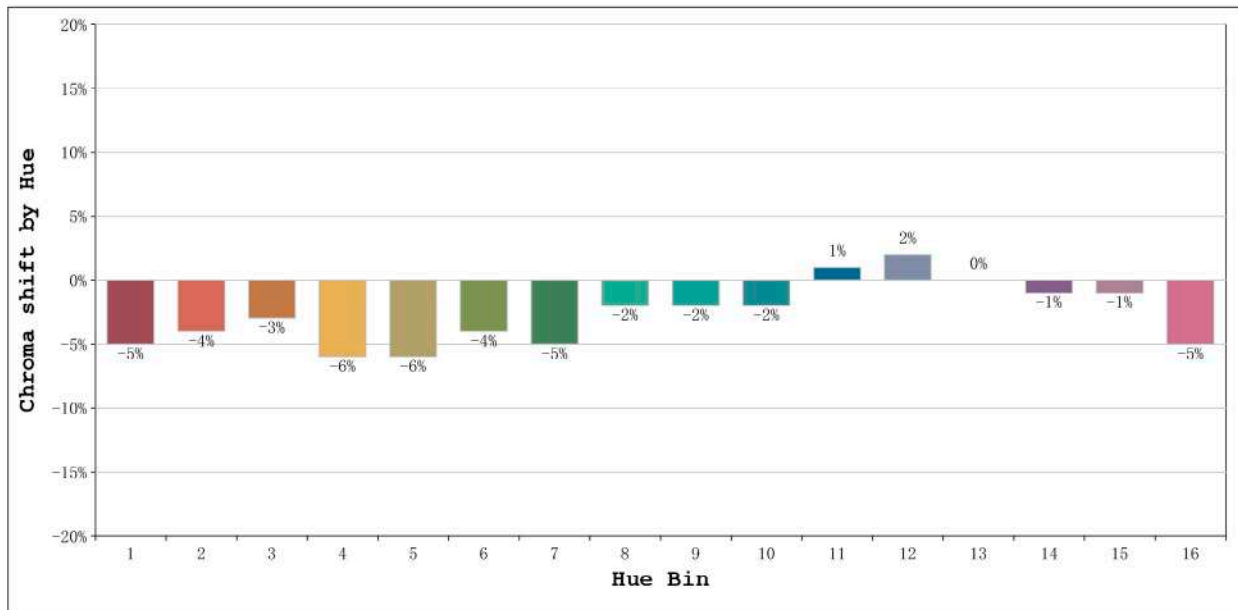
Status: Integral T = 868 ms Ip = 53655 (82%)

Model:Ecoled Canovelles pro 2800K Number:33.190
 Tester:Sergio Carneros Date:26-5-2021
 Temperature:25Deg Humidity:57%
 Manufacturer:Luz Negra.S.L Remarks:100cm Tira flexible

Rf: 90 CCT: 2812 K u': 0.2553
Rg: 93 Duv: 0.0078 v': 0.5364



Model:Ecoled Canovelles pro 2800K Number:33.190
 Tester:Sergio Carneros Date:26-5-2021
 Temperature:25Deg Humidity:57%
 Manufacturer:Luz Negra.S.L Remarks:100cm Tira flexible



Hue Bin	Hue Angle	Rf	Graphic shift (%)	
			Chroma	Hue
1	0.0° - 22.5°	87	-5	0
2	22.5° - 45.0°	91	-4	0
3	45.0° - 67.5°	90	-3	0
4	67.5° - 90.0°	89	-6	-1
5	90.0° - 112.5°	91	-6	1
6	112.5° - 135.0°	91	-4	3
7	135.0° - 157.5°	89	-5	2
8	157.5° - 180.0°	90	-2	4
9	180.0° - 202.5°	90	-2	4
10	202.5° - 225.0°	89	-2	5
11	225.0° - 247.5°	92	1	5
12	247.5° - 270.0°	93	2	2
13	270.0° - 292.5°	92	0	-6
14	292.5° - 315.0°	81	-1	-10
15	315.0° - 337.5°	90	-1	-3
16	337.5° - 360.0°	86	-5	-4

Model:Ecoled Canovelles pro 2800K Number:33.190
 Tester:Sergio Carneros Date:26-5-2021
 Temperature:25Deg Humidity:57%
 Manufacturer:Luz Negra.S.L Remarks:100cm Tira flexible