

ALTA LUMINOSIDAD

Ref: 33.024
Ref: 33.025

6000°K
4000°K

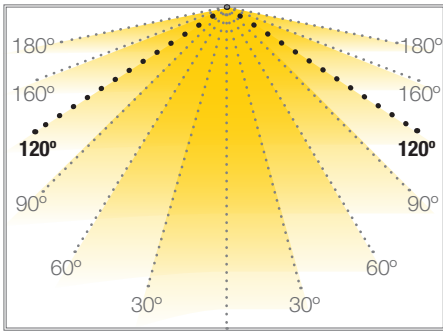
Tira flexible serie "PRO WATERPROOF DUO"
IP67 con 240 leds/metro 2216MD.

Cinta térmica disipadora incluida.

PCB 10mm

Uso diario máximo recomendado: 18h
Conexión máxima en circuito abierto: 3m
Conexión máxima en circuito cerrado: 6m
Vida útil: 50.000h*

*En función de la disipación del perfil, de las horas diarias trabajadas y de la temperatura externa ambiental de trabajo.



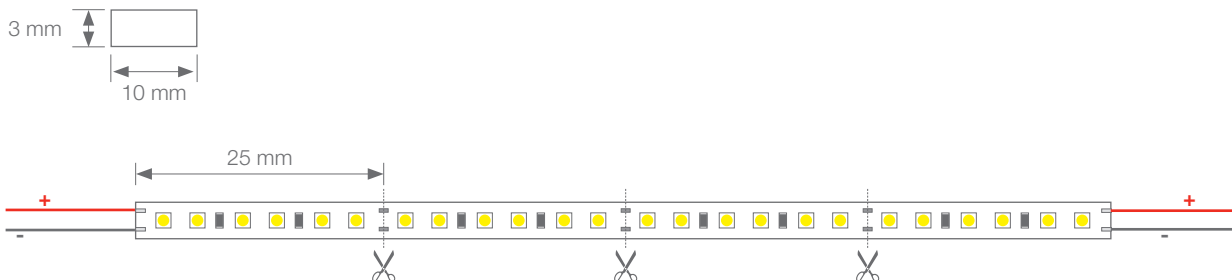
CANOVELLES

TIRAS FLEXIBLES



Potencia (W)	19.2W/m
Voltaje (V)	24V
Tipo Led	SMD2216
Lumens (6000°K)	1600 Lm/m
Lumens (4000°K)	1400 Lm/m
IRC	>85
Emisión de luz	120°
Estanqueidad (IP)	IP67 "DUO"
Nº leds/m	240
Medidas	5000x10x3mm
Cortable	cada 25mm
PCB	10mm
Temperatura trabajo	-20°C / +40°C
Apto para	interior/exterior
Embalaje	1 rollo/5m
Garantía	3 años

Aprobado por: 

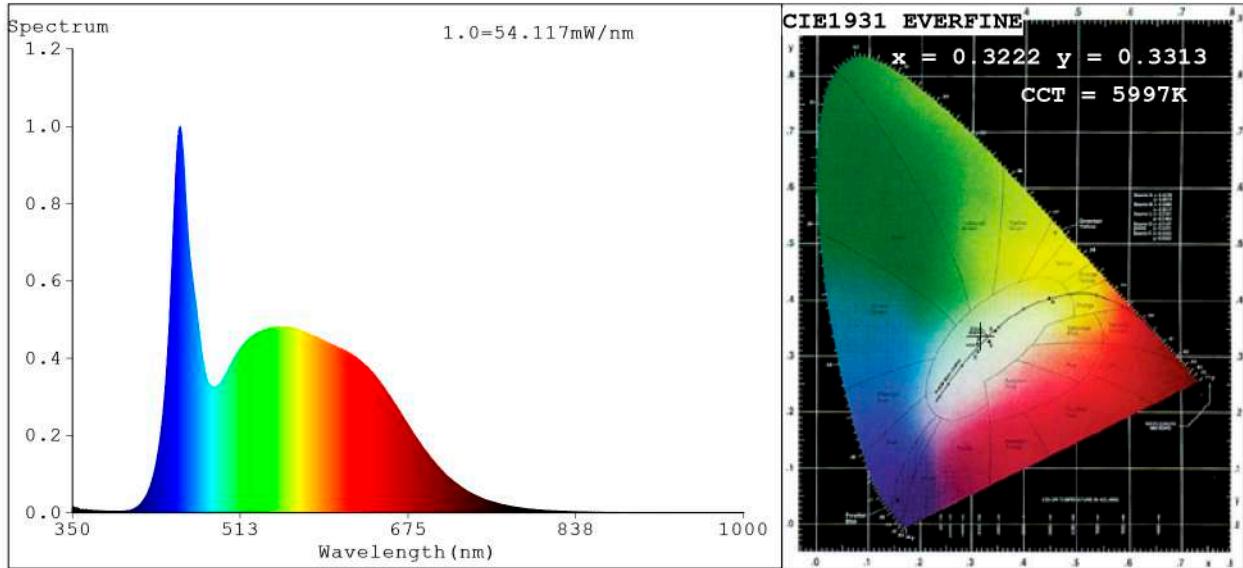


BARCELONA
C/ Carles Buhigues, 13
08420 Canovelles
Info@luznegra.net
Tel: +34 938 402 598

MADRID
C/ Minas, 35-37
28923 Alcorcón
centro@luznegra.net
Tel: +34 916 416 081

PARIS
113 Avenue Joffre
77450 Esbly
france@luznegra.net
Tel: +33 (0) 160 426 585

Spectrum Test Report



Color Parameters:

Chromaticity Coordinate: $x=0.3222$ $y=0.3313$ / $u'=0.2035$ $v'=0.4710$
 CCT=5997K (Duv=-0.0003) Dominant WL:Ld =489.4nm Purity=3.9%
 Ratio:R=15.7% G=78.0% B=6.3%; Peak WL:Lp=454.3nm FWHM=27.4nm
 Render Index:Ra=93.1 CRI=90.1 AvgR=90.3 TM30:Rf=89 Rg=99
 R1 =94 R2 =97 R3 =96 R4 =92 R5 =92 R6 =92 R7 =94
 R8 =89 R9 =73 R10=90 R11=92 R12=68 R13=96 R14=98 R15=94

Photo Parameters:

Flux = 1763 lm Eff. : 83.80 lm/W Fe = 6.328 W Scotopic:4028.1 S/P:2.2847

Electrical parameters:

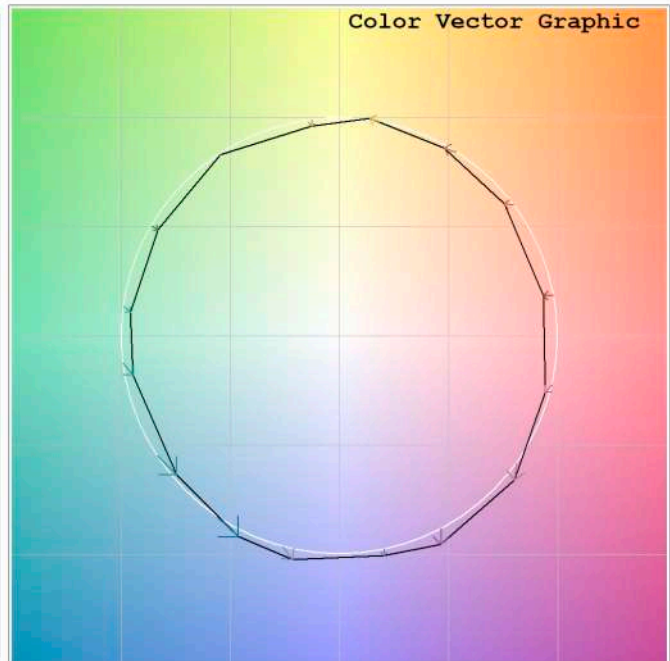
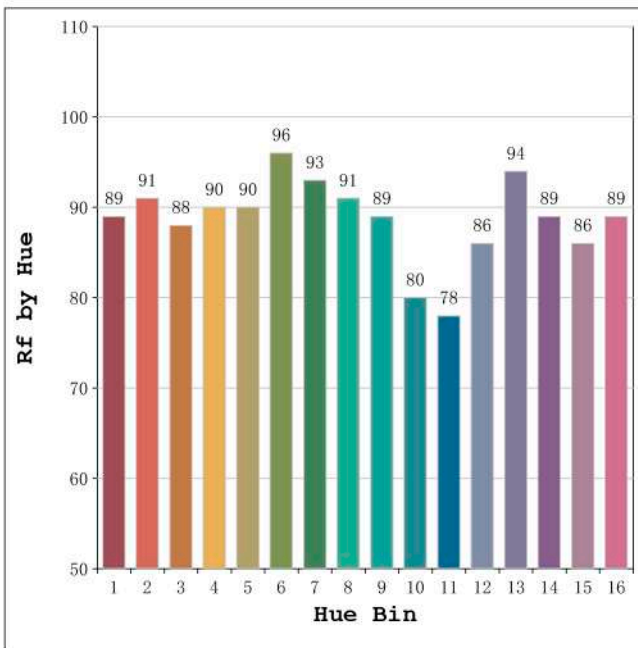
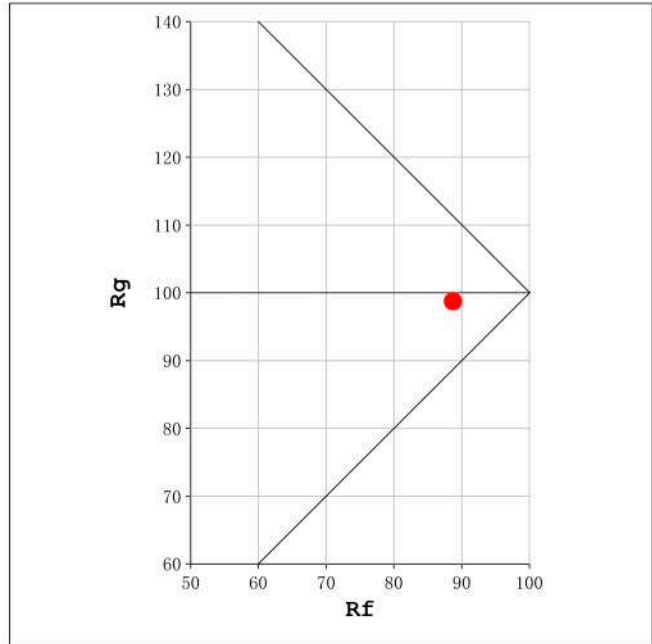
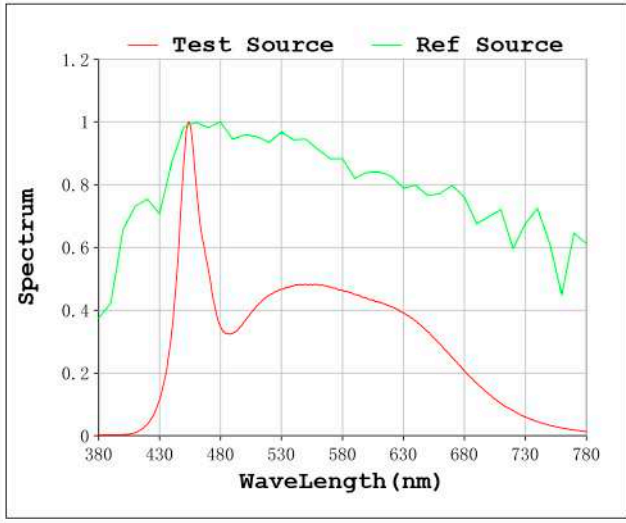
V = 23.998 V I = 0.8767 A P = 21.04 W PF = 1.000

WHITE:ANSI_5700K

Status: Integral T = 505 ms Ip = 44294 (68%)

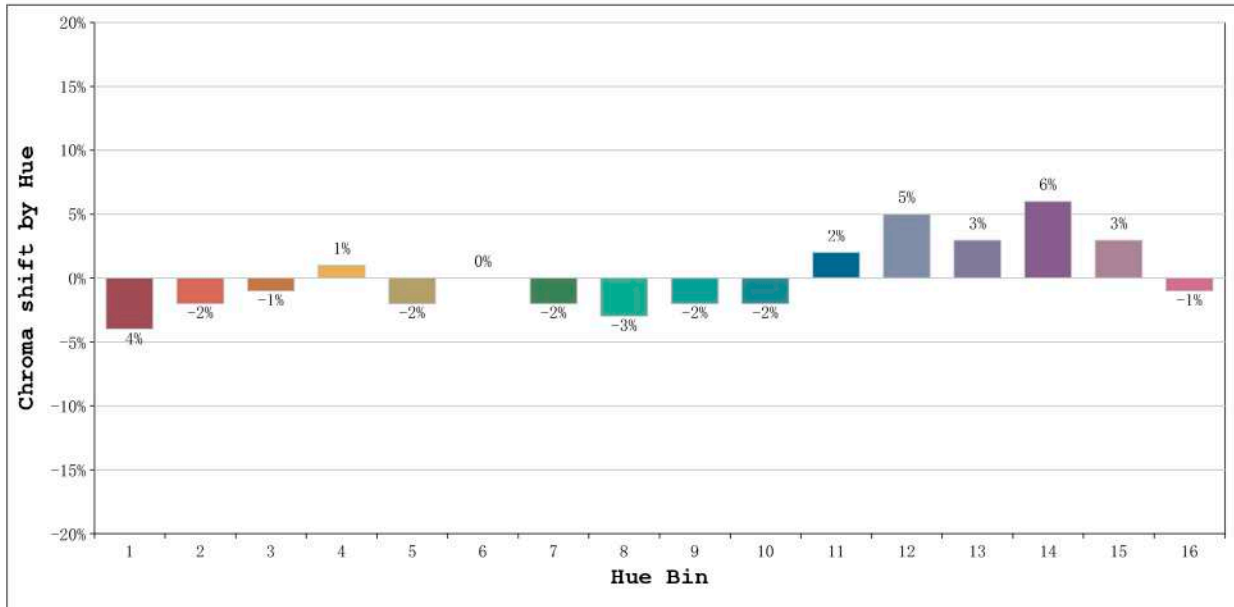
Model:Ecoled Canovelles 6000K	Number: 33.024
Tester:Sergio Carneros	Date:25-5-2021
Temperature:25Deg	Humidity:57%
Manufacturer:Luz Negra S.L	Remarks:100cm de tira flexible

Rf: 89 CCT: 5997 K u': 0.2035
Rg: 99 Duv: -0.0003 v': 0.4710



Model:Ecoled Canovelles 6000K
Tester:Sergio Carneros
Temperature:25Deg
Manufacturer:Luz Negra S.L

Number: 33.024
Date:25-5-2021
Humidity:57%
Remarks:100cm de tira flexible

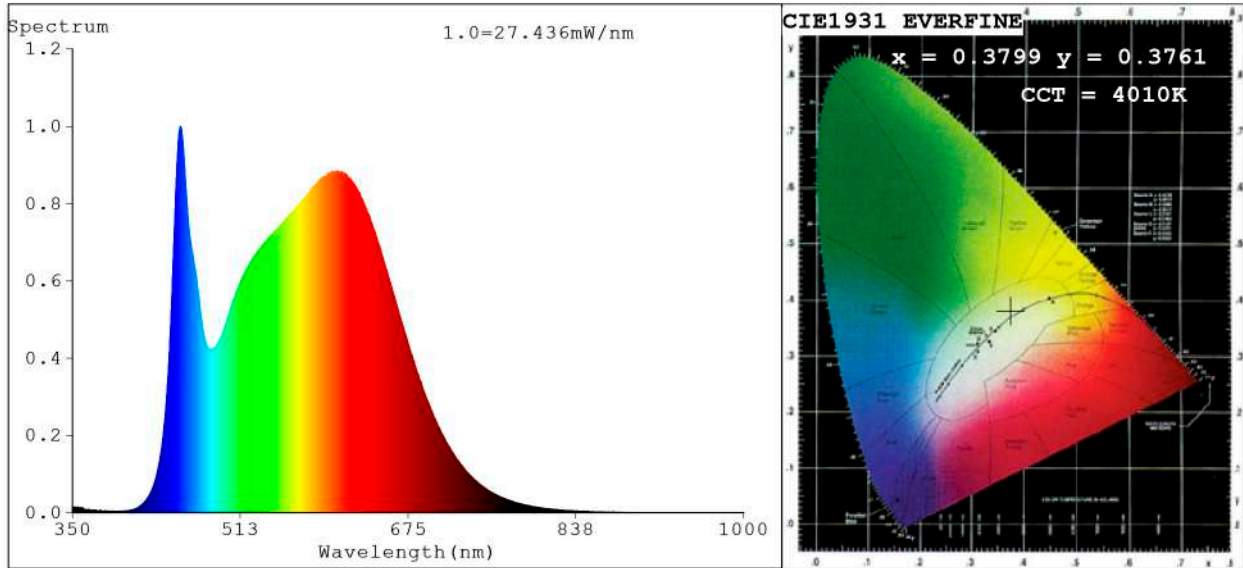


Hue Bin	Hue Angle	Rf	Graphic shift(%)	
			Chroma	Hue
1	0.0° - 22.5°	89	-4	1
2	22.5° - 45.0°	91	-2	3
3	45.0° - 67.5°	88	-1	5
4	67.5° - 90.0°	90	1	5
5	90.0° - 112.5°	90	-2	1
6	112.5° - 135.0°	96	0	0
7	135.0° - 157.5°	93	-2	0
8	157.5° - 180.0°	91	-3	2
9	180.0° - 202.5°	89	-2	6
10	202.5° - 225.0°	80	-2	12
11	225.0° - 247.5°	78	2	13
12	247.5° - 270.0°	86	5	6
13	270.0° - 292.5°	94	3	0
14	292.5° - 315.0°	89	6	-3
15	315.0° - 337.5°	86	3	-6
16	337.5° - 360.0°	89	-1	-3

Model:Ecoled Canovelles 6000K
 Tester:Sergio Carneros
 Temperature:25Deg
 Manufacturer:Luz Negra S.L

Number: 33.024
 Date:25-5-2021
 Humidity:57%
 Remarks:100cm de tira flexible

Spectrum Test Report



Color Parameters:

Chromaticity Coordinate: $x=0.3799$ $y=0.3761$ / $u'=0.2250$ $v'=0.5012$
 CCT=4010K (Duv=-0.0001) Dominant WL:Ld =579.1nm Purity=26.9%
 Ratio:R=19.6% G=75.9% B=4.5%; Peak WL:Lp=454.6nm FWHM=29.7nm
 Render Index:Ra=91.8 CRI=88.5 AvgR=88.5 TM30:Rf=88 Rg=97
 R1 =92 R2 =97 R3 =98 R4 =89 R5 =91 R6 =94 R7 =91
 R8 =82 R9 =58 R10=92 R11=90 R12=70 R13=94 R14=99 R15=89

Photo Parameters:

Flux = 1480 lm Eff. : 81.48 lm/W Fe = 5.017 W Scotopic:2684.1 S/P:1.8139

Electrical parameters:

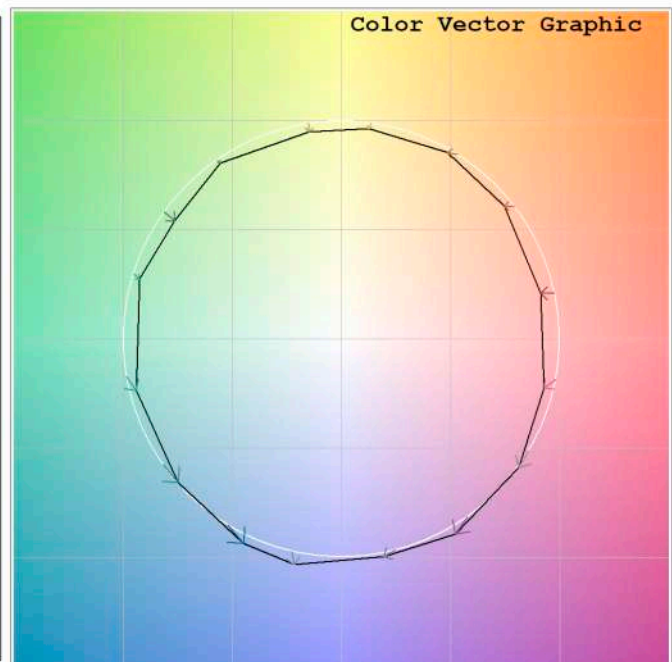
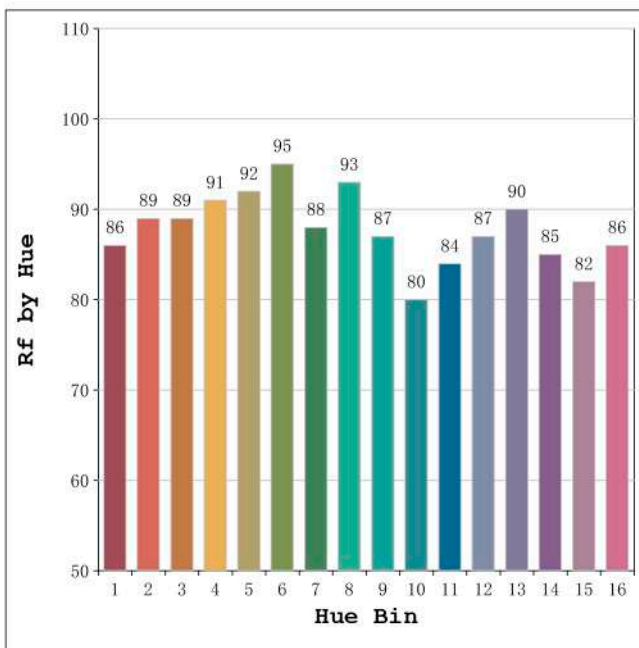
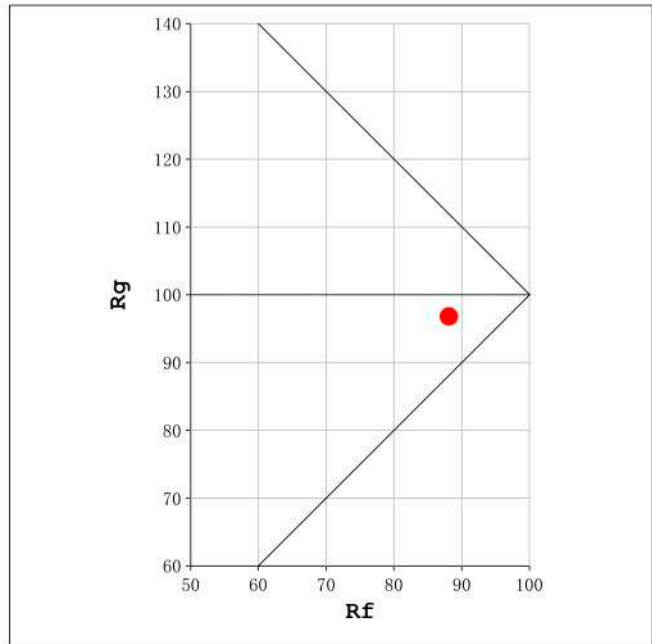
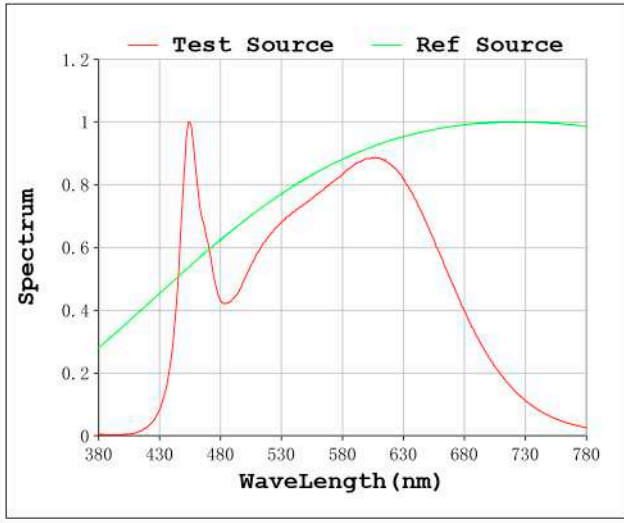
V = 23.998 V I = 0.7568 A P = 18.16 W PF = 1.000

WHITE:ANSI_4000K

Status: Integral T = 1047 ms Ip = 48692 (74%)

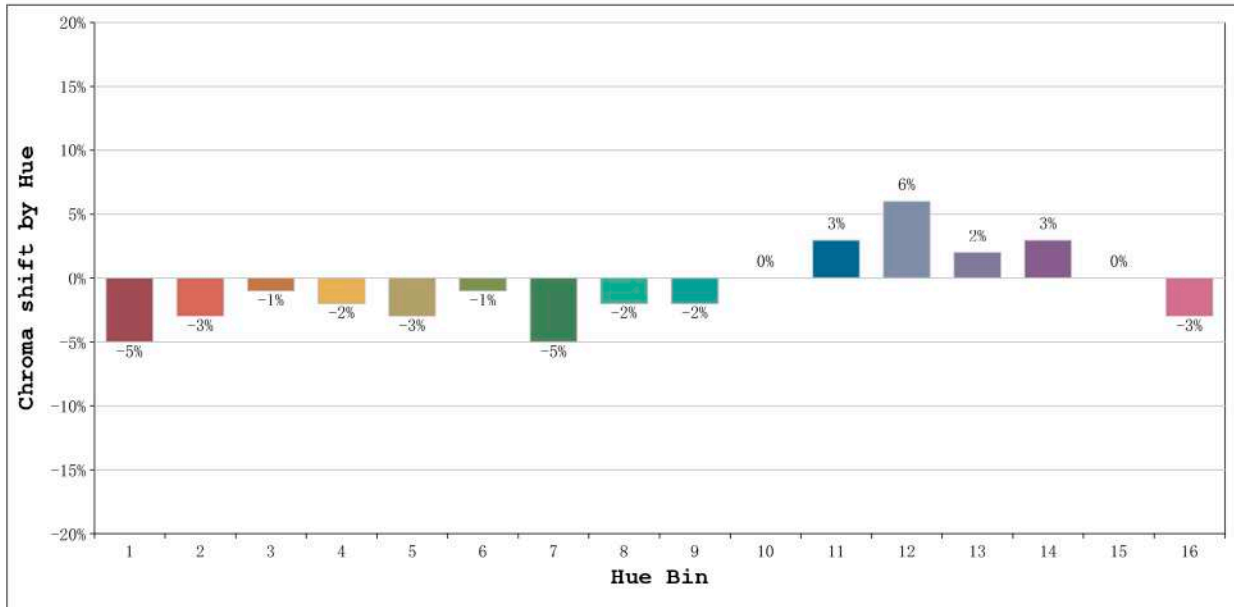
Model:Ecoled Canovelles 4000K	Number: 33.025
Tester:Sergio Carneros	Date:25-5-2021
Temperature:25Deg	Humidity:57%
Manufacturer:Luz Negra S.L	Remarks:100cm de tira flexible

Rf: 88 CCT: 4010 K u': 0.2250
Rg: 97 Duv: -0.0001 v': 0.5012



Model:Ecoled Canovelles 4000K
Tester:Sergio Carneros
Temperature:25Deg
Manufacturer:Luz Negra S.L

Number: 33.025
Date:25-5-2021
Humidity:57%
Remarks:100cm de tira flexible



Hue Bin	Hue Angle	Rf	Graphic shift (%)	
			Chroma	Hue
1	0.0° - 22.5°	86	-5	1
2	22.5° - 45.0°	89	-3	3
3	45.0° - 67.5°	89	-1	4
4	67.5° - 90.0°	91	-2	1
5	90.0° - 112.5°	92	-3	0
6	112.5° - 135.0°	95	-1	0
7	135.0° - 157.5°	88	-5	1
8	157.5° - 180.0°	93	-2	2
9	180.0° - 202.5°	87	-2	7
10	202.5° - 225.0°	80	0	11
11	225.0° - 247.5°	84	3	11
12	247.5° - 270.0°	87	6	2
13	270.0° - 292.5°	90	2	-5
14	292.5° - 315.0°	85	3	-8
15	315.0° - 337.5°	82	0	-8
16	337.5° - 360.0°	86	-3	-4

Model:Ecoled Canovelles 4000K
Tester:Sergio Carneros
Temperature:25Deg
Manufacturer:Luz Negra S.L

Number: 33.025
Date:25-5-2021
Humidity:57%
Remarks:100cm de tira flexible