

## DIGITAL CONTROLLER

## DIGITAL LED

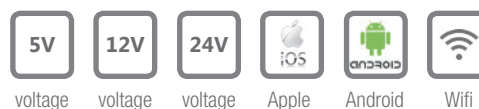
Ref: 41.036

5V - 24V

RGB IP20 digital wifi controller that allows multiple modes and effects.

Free download program via IOS (Apple) or Android operating systems.

Please note, it can only control 41.036 wifi controller. If you want to control the second, you have to disconnect the first and connect the second.



Working voltage	5V - 12V - 24V
Max. Load power	1-5W
Working current	20mA to 130mA
Control method	Wifi
Application	Led Shop, can be downloaded from applications or via QR codes which contain the same product.
Compatible with operative systems	IOS version 10.0 or superior. Android OS 4.4 or superior.
Signal detection distance	30 metre
Maximum pixel load	max. 2048px
Product dimensions	85x45x22mm
Product weight	40g
IC support	WS2811 / WS2801 / UCS1903 / SM16716 / LPD6803 / LPD8806 / LPD9813, etc.
Working temperature	-20°C / +60°C
Cable fixing system	By means of pressure connectors with screws for cables of maximum 1.5mm <sup>2</sup> (in Output and Input) or with a Jack connector.
Memoria Memory	yes

Aprobado por: 

### Wi-Fi Controller 41.036, operating Instructions

- WiFi group control: sync multiple SP108E together even if the LED strips are in different areas. It only works with a 2.4G WIFI network. DO NOT use the 5G WIFI network. IOS 10 / Android 4.4 or later version.
- Wide compatibility: supports almost LED ICs, such as WS2811, WS2812B, WS2801, SK6812, SK6812-RGBW, WS2813, SK9822, APA102, WS2818, LPD6803, LPD8806, TM1913, UCS1903, SM16703, DMX512, etc. (DO NOT control 5050RGB or RGBW led strip which has no IC.)
- Rich colour modes: 180 kinds of multi-colour dynamic modes. 8 kinds of single colour modes, such as meteor, breath, wave, catch up, stack, flash, flow, static. Colour, brightness and speed are adjustable.
- Capture the image with the colour you like: the WiFi controller features creative function from image to effect. You can capture the colour of the image, create the distinctive colour effect, and synchronize the light colour with the atmosphere of your room.
- User-friendly layout: MAX 2048 pixels (1500 pixels recommended) in total. Save user settings when power off. Wide working voltage DC 5V / DC12V / 24V; reverse connection protection; hot swap protection.

### App control

1. Support system: Android operating system, WIFI hardware support.
2. Requires older IOS version 10.0.
3. Requires version 4.4 of the previous Android operating system.
4. Search for "LEDShop" in App Store or Google Play. Scan this QR code to download and install the application.

### Working mode

- A. AP (access point) mode: the controller and the phone connect directly, the controller works as an access point.
1. Go to your phone settings, find and connect the controller (named as SP108E\_XXX, the default password is 12345678).
  2. Open the LED Shop application, then the controller will be displayed in the device list.
- B. STA (station) mode: the controller and the phone are on the same WIFI network. In this network, users can operate the controller without problems.
- There are two ways to configure the controller on the local WIFI network:
- SmartConfig automatic mode (this mode requires your phone to be connected to 2.4GHz WIFI).
1. Make sure your phone is connected to a WIFI network by pressing the Add Device button.
  2. Enter your WIFI password, press next step and select automatic mode. Press and hold the controller button until the LED indicator flashes green.
  3. Pressing OK to confirm and wait for the configuration process to finish.
  4. After the configuration is finished, the LED indicator will turn solid green, drag to update the device list, and the controller will be displayed in the device list.
- Manual configuration mode (this mode requires that your phone is connected to a 2.4GHz WIFI network or has connected to a combined 2.4GHz and 5GHz WIFI network)
1. Make sure your phone is connected to a WIFI network by pressing the Add Device button.
  2. Enter your WIFI password, press next step and select Manual mode. Click the controller button to switch the controller to AP mode (the LED will turn solid blue).
  3. Go to your phone settings, find and connect the controller (named as SP108E\_XXX, the default password is 12345678).
  4. Go back to the APP and press the next step to start the setup process.
  5. After the configuration is complete, the LED indicator will turn solid green. Drag to update the device list, the controller will be displayed in the device list.

**Device disposal**

The user can select the controller and remove it from the network by pressing the “Remove Device” button in the app, or simply click the controller button to switch the controller to AP mode.

**Compatible chips**

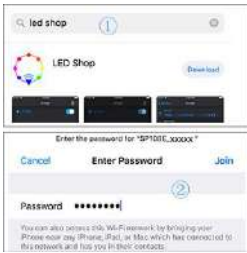
WS2811 / WS2812 / WS2813 / WS2815 / WS2801 / SK6812-RGB / SK6812-RGBW / SK6812-WWA / LPD6803 / LPD8806 / UCS1903 / UCS9812 / APA102 / APA104 / TM1803 / TM1804 / TM1804 SM

**IC support (support WS2813 WS2815 WS2818 chips)**

WS2811	SM16703	TM1814	TM1914	GS8206
WS2812B	TM1804	TM1913	P943S	GS8208
WS2813	UCS1903	P9813	P9411	SK9822
WS2801	LPD6803	INK1003	P9413	P9414
SK6812	LPD8806	DMX512	TXT1812	P9412
SK6812-RGBW	APA102	APA105	TXT1813	

It can support WS2812B and WS2813. But there is no option on setting page. Please choose WS2811 if you connect it to WS2812B and WS2813. It can't support 5050 ordinary RGB led strips with no IC.

**How to configure the controller?**



1. Search the app store for “LED Store” or scan the QR code on the checkout. Install the application on your smartphone or tablet.
2. The controller works as an access point. Open your mobile phone's wifi setting page, find and connect the controller (named SP108E\_xxx, the default pin code is 12345678).
3. Turn off the power to the controller. Wait 1 minute.
4. Connect your phone to your WIFI network, open the LED Shop application.



5. When the controller is not connected to any WIFI network, turn on the controller. The controller will remain in standby mode to connect for 20 seconds.
6. After 20 seconds, press the Add Device button, enter the WIFI pin code, press OK to confirm. Then wait for the setup process to finish.
7. When the controller successfully enters the WIFI network, it will show in the device list. (Choose one of the two connection methods).



8. Set the R / G / B sequence, synchronize it with your lamp.
9. Choose the type of IC, doing the same with your lamp.
10. Set the number of pixels for each section.
11. Establish a series of sections. Total pixels must not exceed 2048.

Product connection:

