

## TIRA FLEXIBLE COB 8MM

## COB IP20

## TIRAS FLEXIBLES

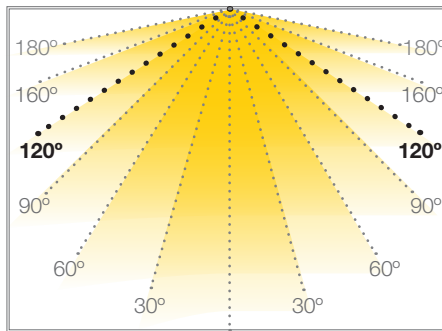
Ref.: 31.145

6000°K

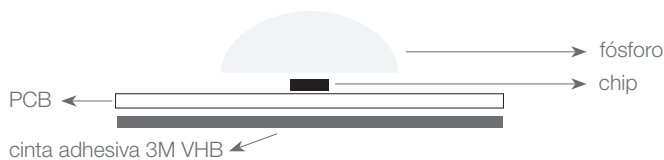
Las nuevas tiras flexibles con tecnología COB permiten iluminar de forma lineal sin que se aprecien los puntos led. A diferencia de las tiras convencionales, en las tiras COB se fija el chip directamente en el PCB sin precisar del dado SMD (frame). Al fijarse directamente a la base de la cinta ofrece una mayor disipación térmica.

Máxima conexión en circuito abierto: 5m  
 Máxima conexión en circuito cerrado: 10m  
 Conexión máxima por tramo: 10m  
 Uso diario máximo recomendado: 20h  
 Vida útil: 50.000h\*

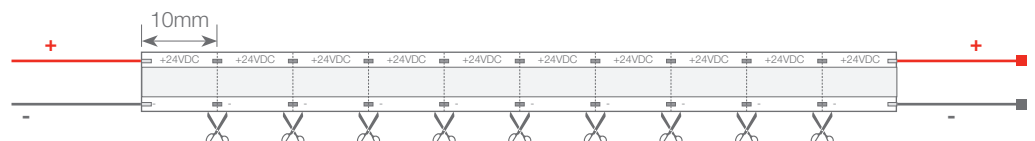
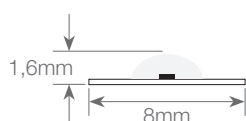
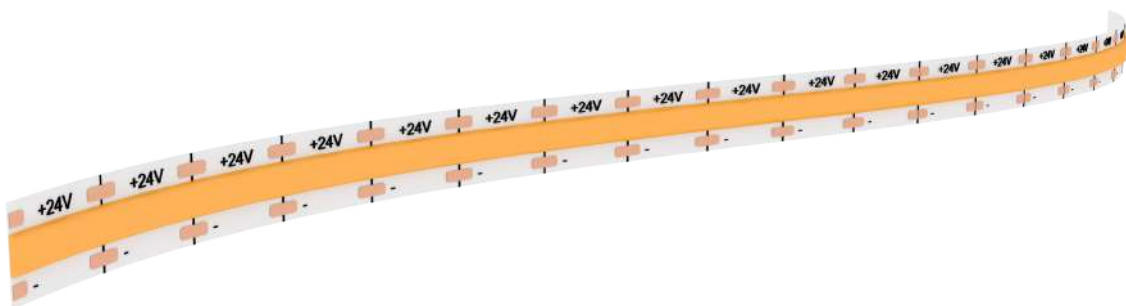
\*En función de la disipación del perfil, de las horas diarias trabajadas y de la temperatura externa ambiental de trabajo.



|                          |               |
|--------------------------|---------------|
| Potencia (W)             | 11W/m         |
| Voltaje (V)              | 24V           |
| Tipo Led                 | COB           |
| Lumens <sup>6000°K</sup> | 1177 Lm/m     |
| CRI                      | >90           |
| Emisión de luz           | 120°          |
| Estanqueidad (IP)        | IP20          |
| Nº leds/m                | 600           |
| Medidas                  | 5000x8x1,6mm  |
| Cortable                 | cada 10mm     |
| PCB                      | 8mm           |
| Temperatura trabajo      | -25°C / +45°C |
| Apto para                | interior      |
| Embalaje                 | rollo de 5m   |
| Garantía                 | 2 años        |



Aprobado por: 

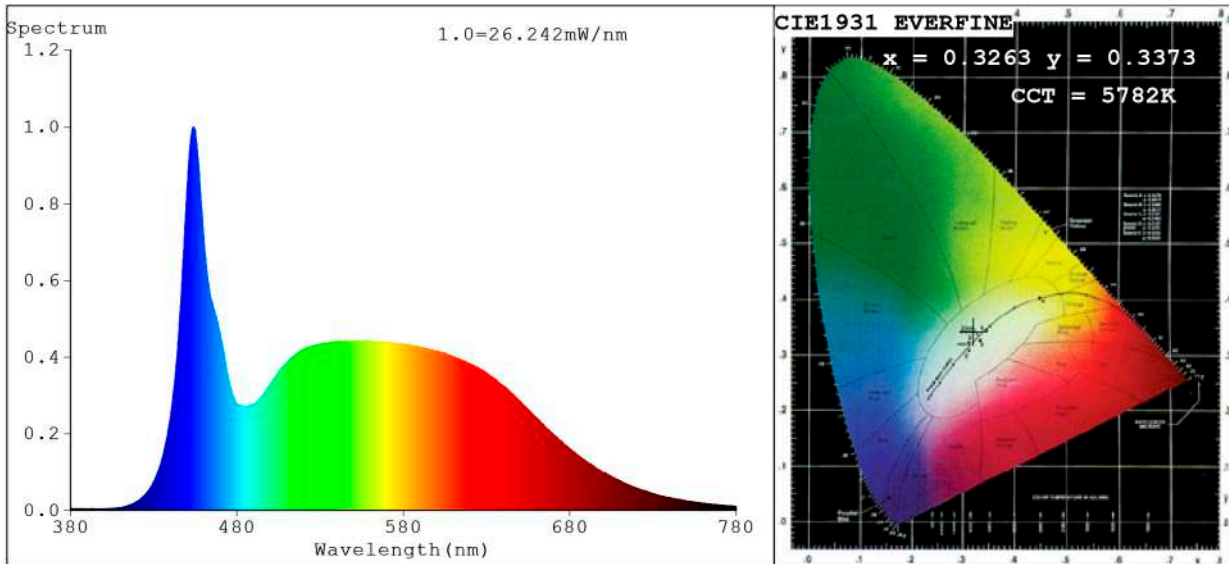


**BARCELONA**  
 C/ Carles Buigues, 13  
 08420 Canovelles  
 Info@luznegra.net  
 Tel: +34 938 402 598

**MADRID**  
 C/ Adaptación, 27  
 28906 Getafe  
 centro@luznegra.net  
 Tel: +34 916 416 081

**PARIS**  
 113 Avenue Joffre  
 77450 Esbly  
 france@luznegra.net  
 Tel: +33 (0) 160 426 585

**Spectrum Test Report**



**Color Parameters:**

Chromaticity Coordinate:  $x=0.3263$   $y=0.3373$  /  $u'=0.2041$   $v'=0.4747$   
 CCT=5782K (Duv=0.0009) Dominant WL:Ld =499.1nm Purity=2.2%  
 Ratio:R=15.7% G=78.4% B=5.9% ; Peak WL:Lp=453.9nm FWHM=22.1nm  
 Render Index:Ra=91.5 CRI=87.6 TM30:Rf=88 Rg=98  
 R1 =92 R2 =96 R3 =95 R4 =90 R5 =91 R6 =91 R7 =93  
 R8 =85 R9 =60 R10=88 R11=90 R12=65 R13=94 R14=98 R15=90

**Photo Parameters:**

Flux = 791.5 lm Eff. : 79.55 lm/W Fe = 2.724 W Scotopic:1764.5 S/P:2.2294

**Electrical parameters:**

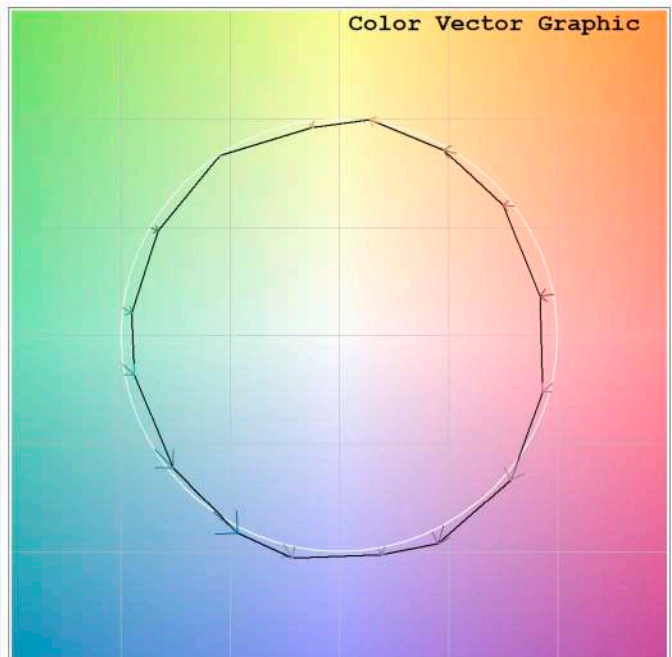
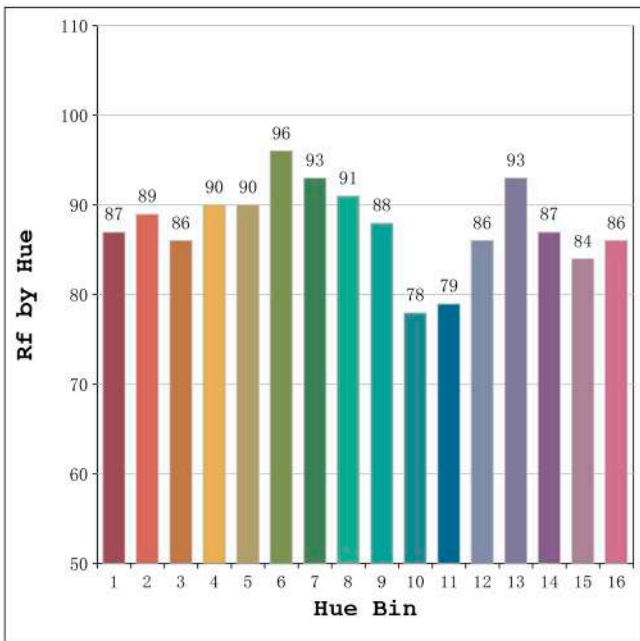
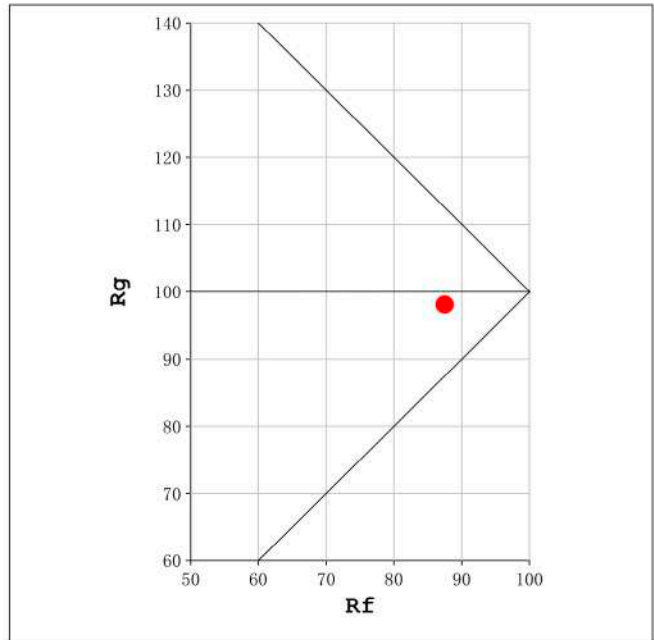
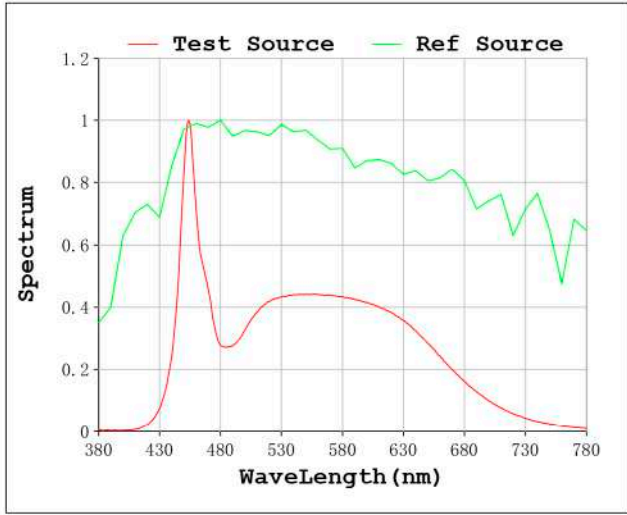
V = 23.998 V I = 0.4146 A P = 9.950 W PF = 1.000

Status: Integral T = 942 ms Ip = 39930 (61%)

Model:Ecoled Cob 8 6000K  
 Tester:Sergio Carneros  
 Temperature:25Deg  
 Manufacturer:Luz Negra S.L

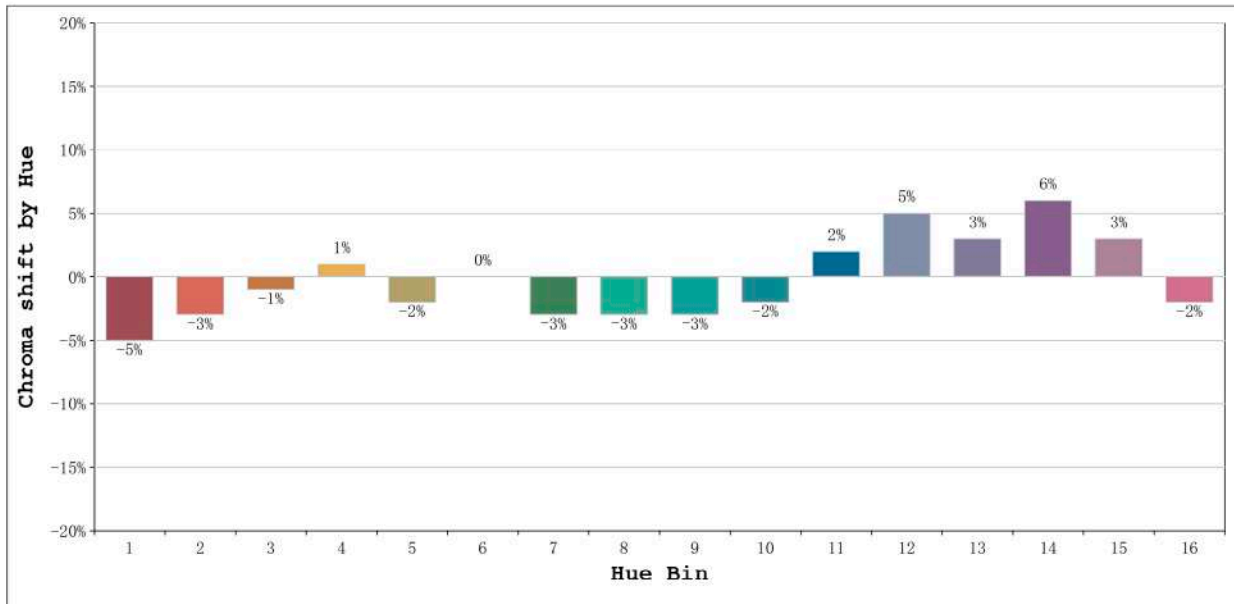
Number: 35.145  
 Date:2021-07-01  
 Humidity:57%  
 Remarks:100cm de tira flexible

Rf: 88      CCT: 5782 K      u': 0.2041  
Rg: 98      Duv: 0.0009      v': 0.4747



Model:Ecoled Cob 8 6000K  
Tester:Sergio Carneros  
Temperature:25Deg  
Manufacturer:Luz Negra S.L

Number: 35.145  
Date:2021-07-01  
Humidity:57%  
Remarks:100cm de tira flexible



| Hue Bin | Hue Angle       | Rf | Graphic shift(%) |     |
|---------|-----------------|----|------------------|-----|
|         |                 |    | Chroma           | Hue |
| 1       | 0.0° - 22.5°    | 87 | -5               | 0   |
| 2       | 22.5° - 45.0°   | 89 | -3               | 3   |
| 3       | 45.0° - 67.5°   | 86 | -1               | 6   |
| 4       | 67.5° - 90.0°   | 90 | 1                | 5   |
| 5       | 90.0° - 112.5°  | 90 | -2               | 1   |
| 6       | 112.5° - 135.0° | 96 | 0                | 0   |
| 7       | 135.0° - 157.5° | 93 | -3               | 0   |
| 8       | 157.5° - 180.0° | 91 | -3               | 2   |
| 9       | 180.0° - 202.5° | 88 | -3               | 6   |
| 10      | 202.5° - 225.0° | 78 | -2               | 12  |
| 11      | 225.0° - 247.5° | 79 | 2                | 14  |
| 12      | 247.5° - 270.0° | 86 | 5                | 5   |
| 13      | 270.0° - 292.5° | 93 | 3                | -1  |
| 14      | 292.5° - 315.0° | 87 | 6                | -6  |
| 15      | 315.0° - 337.5° | 84 | 3                | -8  |
| 16      | 337.5° - 360.0° | 86 | -2               | -4  |

Model:Ecoled Cob 8 6000K  
 Tester:Sergio Carneros  
 Temperature:25Deg  
 Manufacturer:Luz Negra S.L

Number: 35.145  
 Date:2021-07-01  
 Humidity:57%  
 Remarks:100cm de tira flexible