

TIRA FLEXIBLE COB RGBW

COB IP20

TIRAS FLEXIBLES

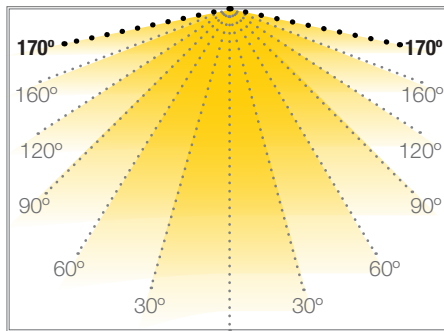
Ref.: 31.149

RGBW (2500K)

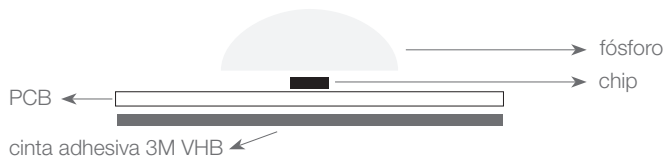
Nuestras nuevas tiras flexibles con tecnología COB RGBW permiten iluminar de forma lineal sin que se aprecien los puntos led. A diferencia de las tiras convencionales, en las tiras COB RGBW se fija el chip directamente en el PCB sin precisar el dado SMD (frame). Al fijarse directamente a la base de la cinta ofrece una mayor disipación térmica.

Máxima conexión en circuito abierto: 5m
 Máxima conexión en circuito cerrado: 10m
 Uso diario máximo recomendado: 20h
 Vida útil: 50.000h*

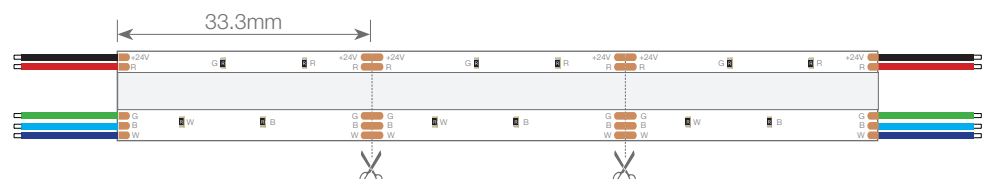
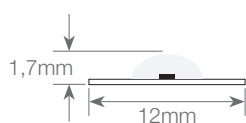
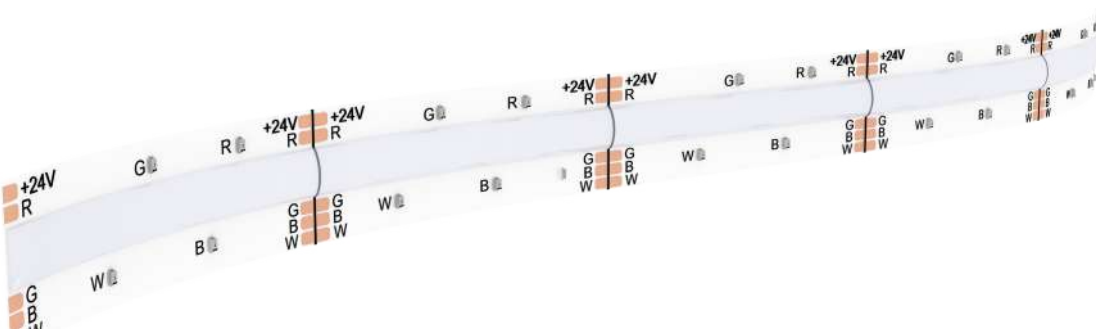
*En función de la disipación del perfil, de las horas diarias trabajadas y de la temperatura externa ambiental de trabajo.



Potencia (W)	20W/m
Voltaje (V)	24V
Tipo Led	COB
Lumens RGBW	917 Lm/m
CRI	>60
Emisión de luz	170°
Estanqueidad (IP)	IP20
Nº leds/m	840
Medidas	5000x12x1,7mm
Cortable	cada 33,3mm
PCB	12mm
Temperatura trabajo	-20°C / +45°C
Apto para	interior
Embalaje	rollo de 5m
Garantía	2 años



Aprobado por: CE RoHS COMPLIANT

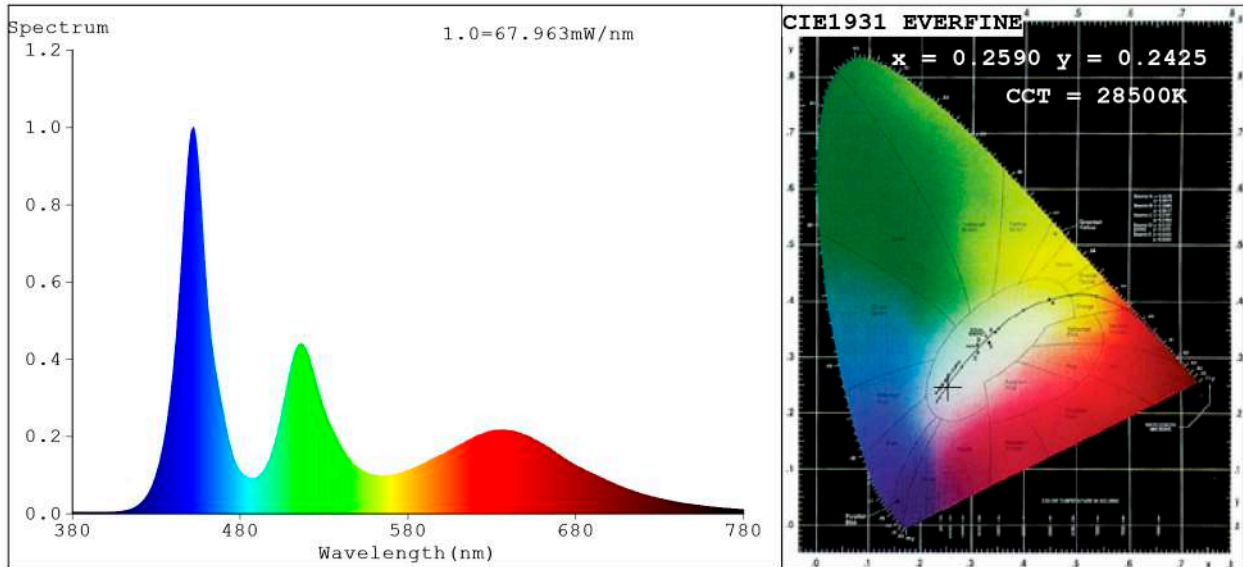


BARCELONA
 C/ Carles Buigues, 13
 08420 Canovelles
 Info@luznegra.net
 Tel: +34 938 402 598

MADRID
 C/ Minas, 35-37
 28923 Alcorcón
 centro@luznegra.net
 Tel: +34 916 416 081

PARIS
 113 Avenue Joffre
 77450 Esbly
 france@luznegra.net
 Tel: +33 (0) 160 426 585

Spectrum Test Report



Color Parameters:

Chromaticity Coordinate: $x=0.2590$ $y=0.2425$ / $u'=0.1922$ $v'=0.4047$
 CCT=28500K (Duv=-0.0101) Dominant WL:Ld =472.3nm Purity=34.5%
 Ratio:R=17.8% G=74.3% B=8.0%; Peak WL:Lp=452.2nm FWHM=18.8nm
 Render Index:Ra=71.1 CRI=63.9 TM30:Rf=73 Rg=118
 R1 =59 R2 =86 R3 =80 R4 =55 R5 =70 R6 =86 R7 =82
 R8 =50 R9 =0 R10=70 R11=35 R12=70 R13=65 R14=86 R15=51

Photo Parameters:

Flux = 917.4 lm Eff. : 48.53 lm/W Fe = 4.415 W Scotopic:3058 S/P:3.3332

Electrical parameters:

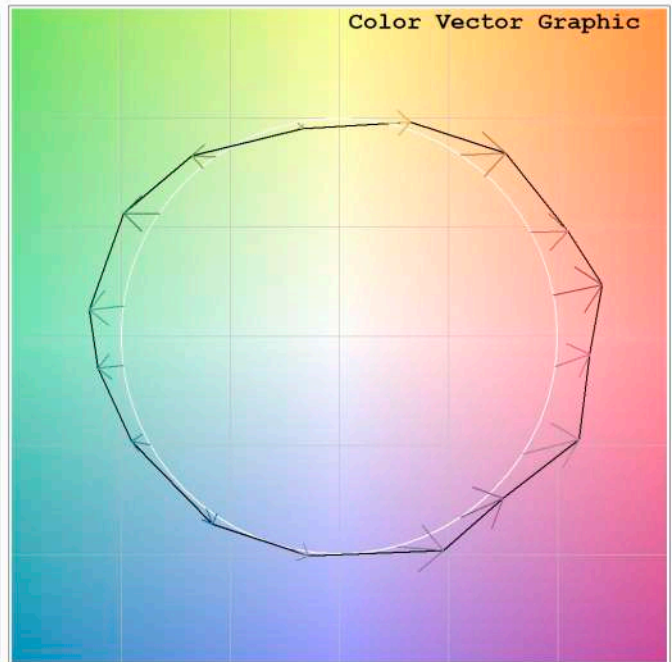
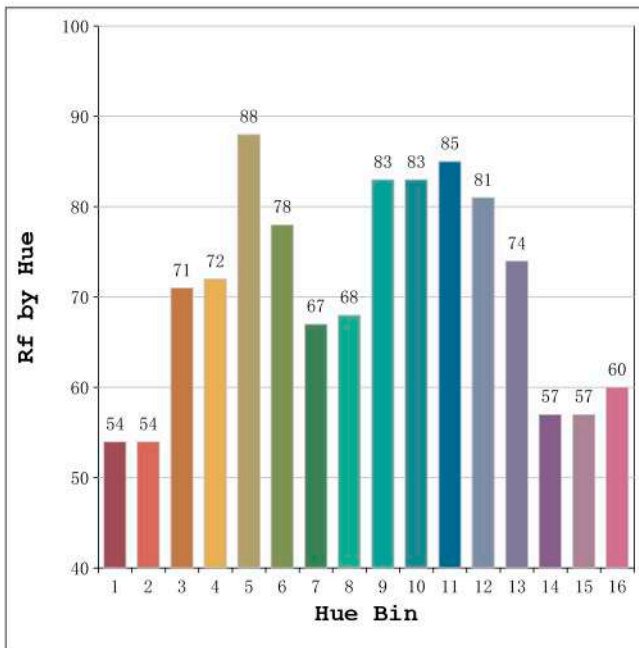
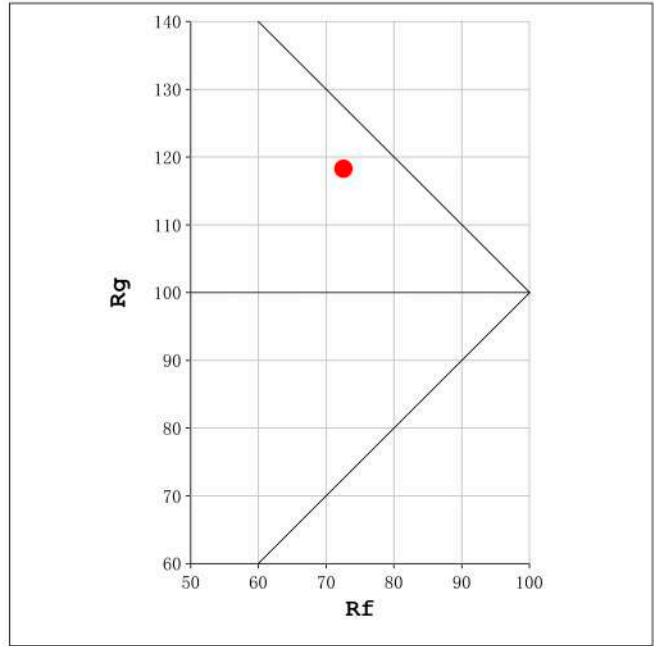
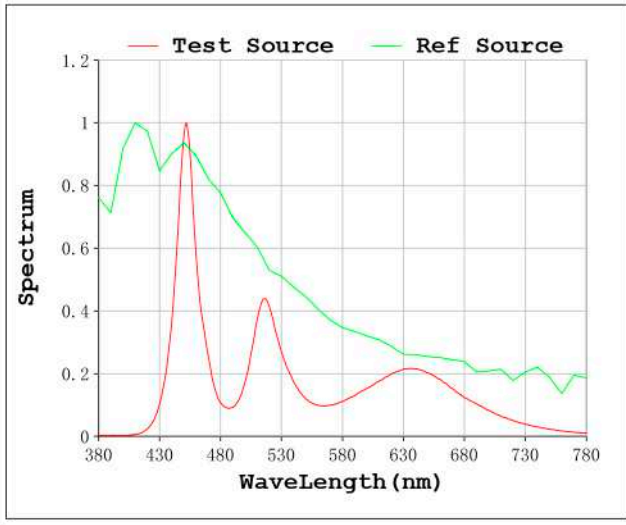
V = 23.998 V I = 0.7878 A P = 18.91 W PF = 1.000

Status: Integral T = 485 ms Ip = 46333 (71%)

Model:Ecoled COB RGB (R+G+B+W)
 Tester:Sergio Carneros
 Temperature:25Deg
 Manufacturer:Luz Negra

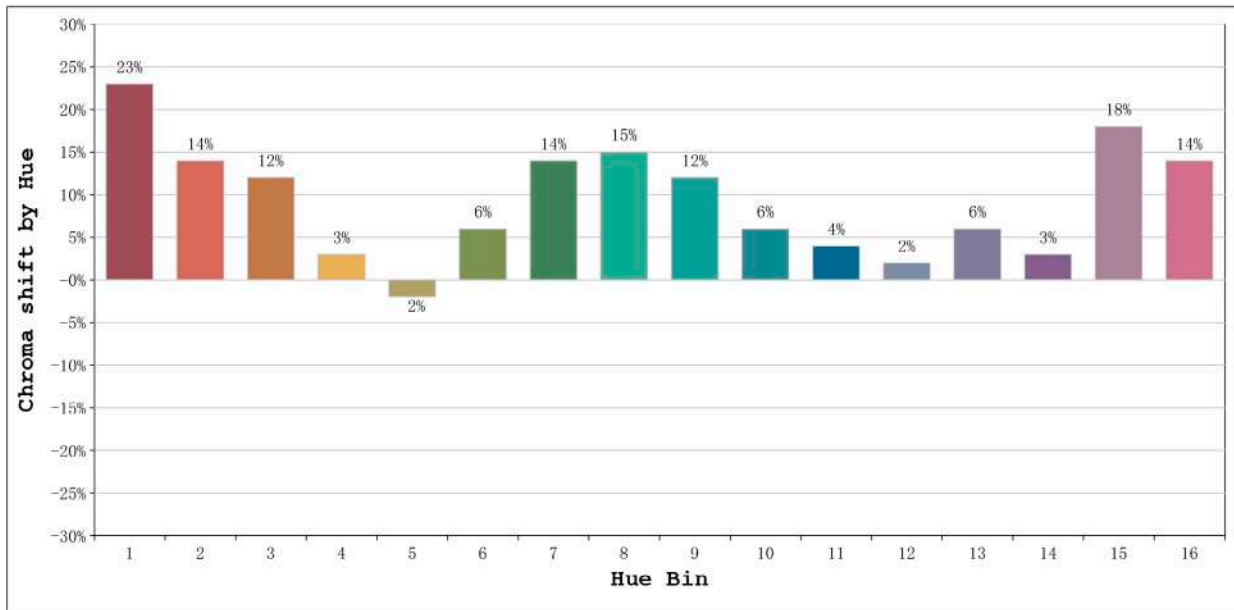
Number: 31.149
 Date:2021-12-27 08:34:45
 Humidity:57%
 Remarks:100cm de tira flexible

Rf: 73 CCT: 28500 K u': 0.1922
Rg: 118 Duv: -0.0101 v': 0.4047



Model:Ecoled COB RGB (R+G+B+W)
Tester:Sergio Carneros
Temperature:25Deg
Manufacturer:Luz Negra

Number: 31.149
Date:2021-12-27 08:34:45
Humidity:57%
Remarks:100cm de tira flexible

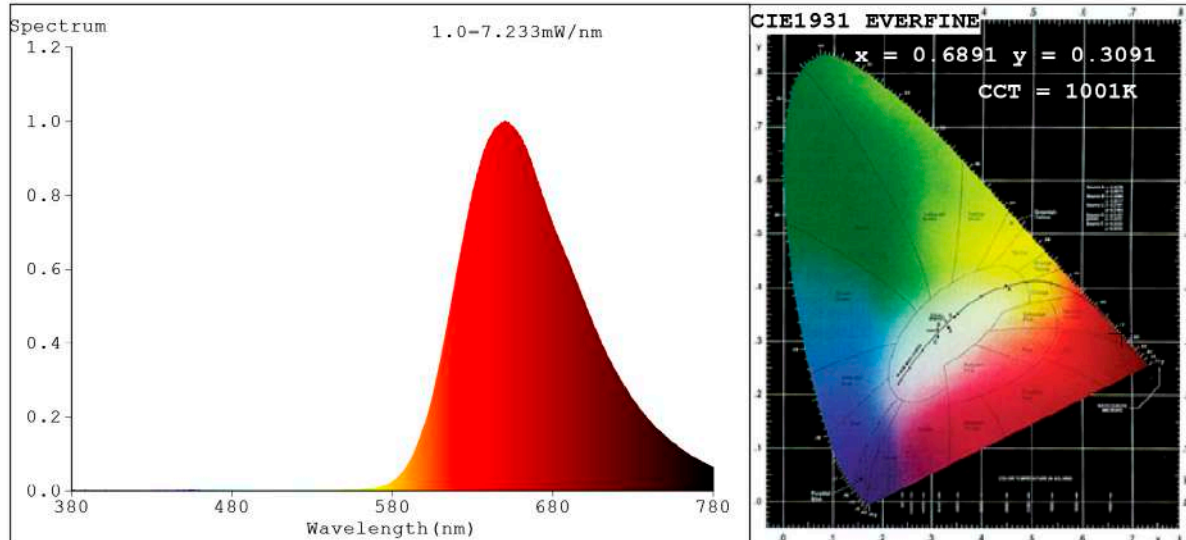


Hue Bin	Hue Angle	Rf	Graphic shift(%)	
			Chroma	Hue
1	0.0° - 22.5°	54	23	0
2	22.5° - 45.0°	54	14	-8
3	45.0° - 67.5°	71	12	-16
4	67.5° - 90.0°	72	3	-10
5	90.0° - 112.5°	88	-2	0
6	112.5° - 135.0°	78	6	9
7	135.0° - 157.5°	67	14	9
8	157.5° - 180.0°	68	15	5
9	180.0° - 202.5°	83	12	0
10	202.5° - 225.0°	83	6	-5
11	225.0° - 247.5°	85	4	6
12	247.5° - 270.0°	81	2	8
13	270.0° - 292.5°	74	6	20
14	292.5° - 315.0°	57	3	21
15	315.0° - 337.5°	57	18	20
16	337.5° - 360.0°	60	14	9

Model:Ecoled COB RGB (R+G+B+W)
 Tester:Sergio Carneros
 Temperature:25Deg
 Manufacturer:Luz Negra

Number: 31.149
 Date:2021-12-27 08:34:45
 Humidity:57%
 Remarks:100cm de tira flexible

Spectrum Test Report



Color Parameters:

Chromaticity Coordinate: $x=0.6891$ $y=0.3091$ $u'=0.5170$ $v'=0.5218$
 CCT=1001K (Duv=-0.0694) Dominant WL: $L_d = 619.7\text{nm}$ Purity=99.5%
 Ratio: R=88.8% G=11.2% B=0.0%; Peak WL: $L_p = 650.2\text{nm}$ FWHM=84.2nm
 Render Index: Ra=38.5 CRI=41.3 TM30: Rf=47 Rg=-1
 R1 =24 R2 =78 R3 =51 R4 =1 R5 =24 R6 =79 R7 =47
 R8 =4 R9 =0 R10=76 R11=3 R12=83 R13=39 R14=70 R15=11

Photo Parameters:

Flux = 58.87 lm Eff. : 11.66 lm/W Fe = 662.2 mW Scotopic: 4.3516 S/P: 0.073921

Electrical parameters:

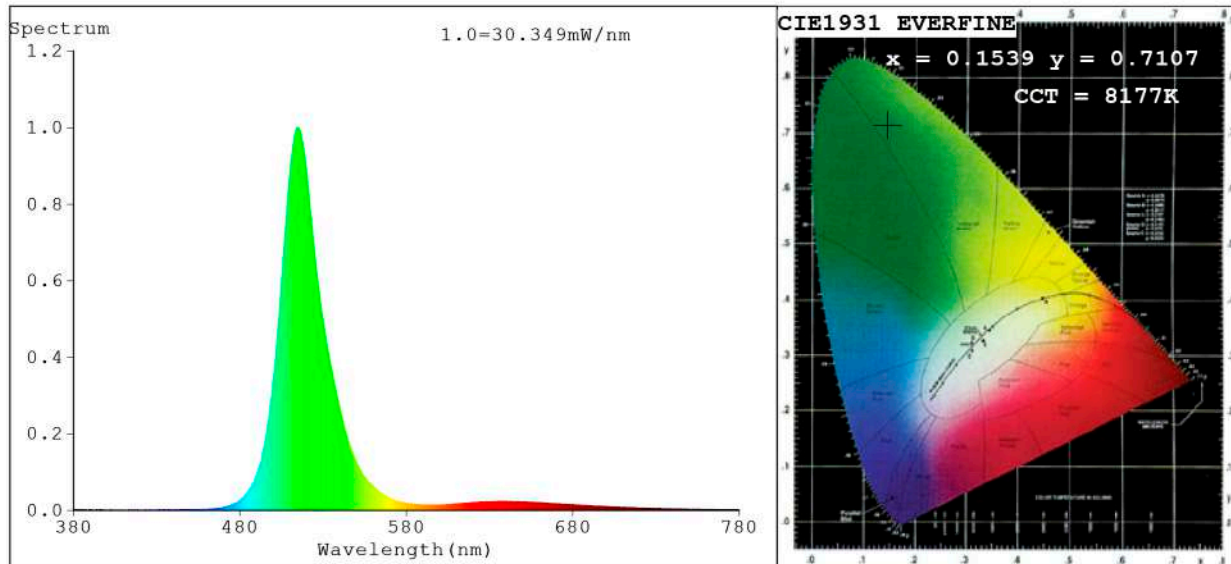
V = 23.998 V I = 0.2104 A P = 5.049 W PF = 1.000

Status: Integral T = 3882 ms Ip = 48424 (74%)

Model: Ecoled COB RGB (R)
 Tester: Sergio Carneros
 Temperature: 25Deg
 Manufacturer: Luz Negra

Number: 31.149
 Date: 2021-12-27 08:36:16
 Humidity: 57%
 Remarks: 100cm de tira flexible

Spectrum Test Report



Color Parameters:

Chromaticity Coordinate: $x=0.1539$ $y=0.7107$ / $u'=0.0548$ $v'=0.5700$
 CCT=8177K (Duv=0.1603) Dominant WL:Ld =522.8nm Purity=75.7%
 Ratio:R=1.6% G=95.7% B=2.6%;; Peak WL:Lp=514.3nm FWHM=26.4nm
 Render Index:Ra=0.0 CRI=2.5 TM30:Rf=1 Rg=13
 R1 =0 R2 =0 R3 =0 R4 =0 R5 =0 R6 =0 R7 =0
 R8 =0 R9 =0 R10=0 R11=0 R12=0 R13=0 R14=35 R15=0

Photo Parameters:

Flux = 446.7 lm Eff. : 95.50 lm/W Fe = 1.045 W Scotopic:1441.1 S/P:3.2264

Electrical parameters:

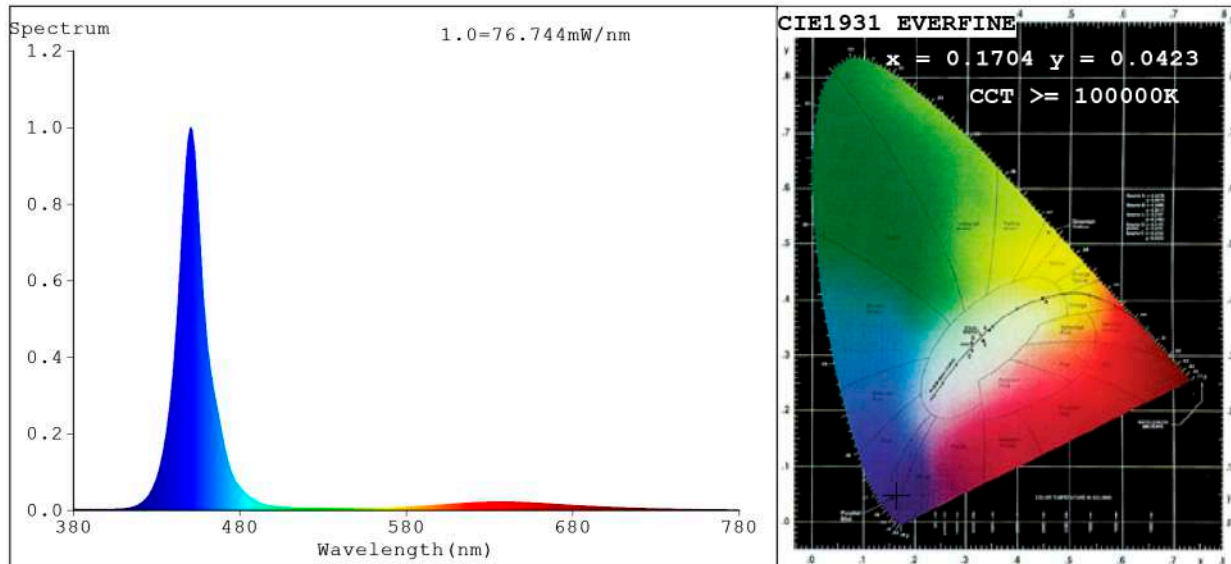
V = 23.998 V I = 0.1949 A P = 4.677 W PF = 1.000

Status: Integral T = 500 ms Ip = 33647 (51%)

Model:Ecoled COB RGB (G)
 Tester:Sergio Carneros
 Temperature:25Deg
 Manufacturer:Luz Negra

Number: 31.149
 Date:2021-12-27 08:38:39
 Humidity:57%
 Remarks:100cm de tira flexible

Spectrum Test Report



Color Parameters:

Chromaticity Coordinate: $x=0.1704$ $y=0.0423$ / $u'=0.2152$ $v'=0.1202$
 CCT=100000K(Duv=-0.1890) Dominant WL:Ld =450.0nm Purity=92.2%
 Ratio:R=18.0% G=27.2% B=54.9%; Peak WL:Lp=450.5nm FWHM=16.9nm
 Render Index:Ra=9.1 CRI=5.2 TM30:Rf=0 Rg=-61
 R1 =21 R2 =0 R3 =0 R4 =0 R5 =52 R6 =0 R7 =0
 R8 =0 R9 =0 R10=0 R11=0 R12=0 R13=0 R14=0 R15=0

Photo Parameters:

Flux = 99.83 lm Eff. : 20.72 lm/W Fe = 1.872 W Scotopic:1387.6 S/P:13.899

Electrical parameters:

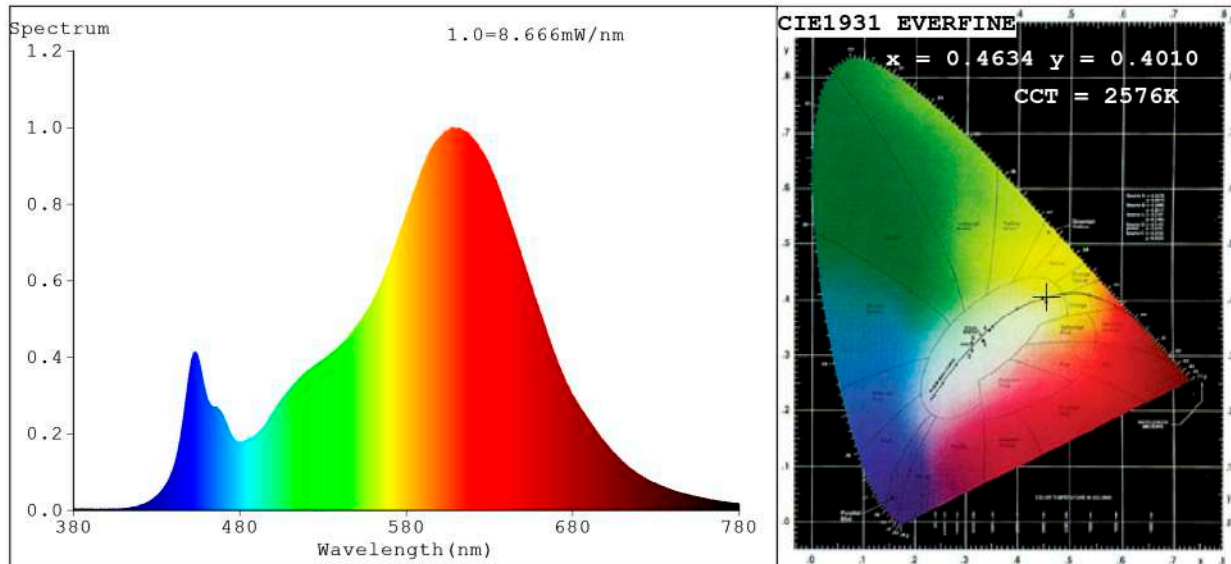
V = 23.998 V I = 0.2008 A P = 4.819 W PF = 1.000

Status: Integral T = 500 ms Ip = 52803 (81%)

Model:Ecoled COB RGB (B)
 Tester:Sergio Carneros
 Temperature:25Deg
 Manufacturer:Luz Negra

Number: 31.149
 Date:2021-12-27 08:39:21
 Humidity:57%
 Remarks:100cm de tira flexible

Spectrum Test Report



Color Parameters:

Chromaticity Coordinate: $x=0.4634$ $y=0.4010$ / $u'=0.2692$ $v'=0.5242$
 CCT=2576K(Duv=-0.0038) Dominant WL:Ld =586.2nm Purity=59.5%
 Ratio:R=26.8% G=70.7% B=2.4%; Peak WL:Lp=606.9nm FWHM=108.2nm
 Render Index:Ra=84.2 CRI=81.0 TM30:Rf=83 Rg=98
 R1 =85 R2 =96 R3 =91 R4 =82 R5 =86 R6 =95 R7 =80
 R8 =59 R9 =17 R10=92 R11=83 R12=84 R13=88 R14=96 R15=77

Photo Parameters:

Flux = 375.2 lm Eff. : 76.45 lm/W Fe = 1.205 W Scotopic:459.69 S/P:1.2252

Electrical parameters:

V = 23.998 V I = 0.2045 A P = 4.908 W PF = 1.000

Status: Integral T = 2833 ms Ip = 49670 (76%)

Model:Ecoled COB RGB (W)
 Tester:Sergio Carneros
 Temperature:25Deg
 Manufacturer:Luz Negra

Number: 31.149
 Date:2021-12-27 08:42:31
 Humidity:57%
 Remarks:100cm de tira flexible