

ALTA LUMINOSIDAD

BOXLED SECCIONABLE ESTANCO

TIRAS RIGIDAS

Ref: 37.022

6500°K

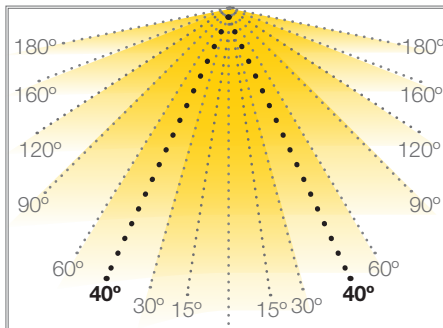
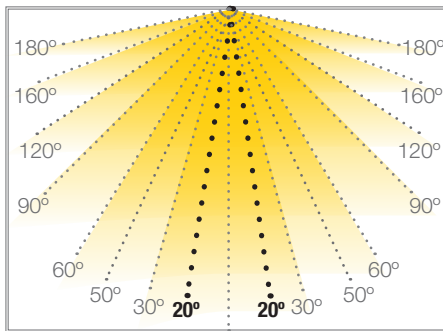
Tira de LED rígida de un solo color (cortable) serie "PRO", IP65 con 9 leds SMD.

Óptica asimétrica de 20°/40° para barrido de luz.

Para una disipación de conexión de este modelo, se requerirá un perfil de led y una cinta de disipación de calor.

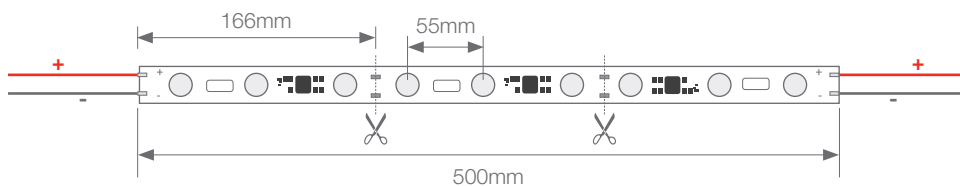
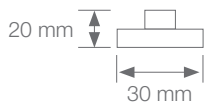
Aplicar cinta de disipación térmica.

Uso diario máximo recomendado: 18h.



Potencia (W)	15W
Voltaje (V)	24V
Lumens (6500°K)	1500Lm
Eficiencia	100 Lm/W
Temperatura de color	6500°K
Emisión de luz	20°/40°
Estanqueidad (IP)	IP65
CRI	>74
Medidas	500x30x20mm
Cortable	cada 166mm (3 leds)
Temperatura trabajo	-25°C / +60°C
Convertidor	no incluido
Fijación	tornillo
Embalaje	1 unidad
Garantía	3 años

Aprobado por: 

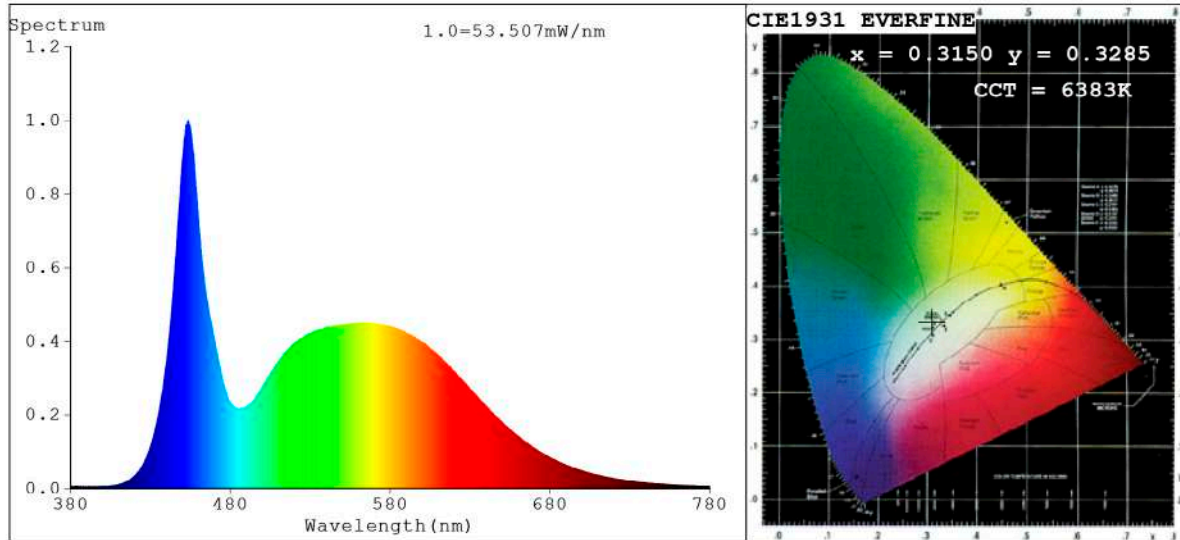


BARCELONA
C/ Carles Buhigues, 13
08420 Canovelles
Info@luznegra.net
Tel: +34 938 402 598

MADRID
C/ Adaptación, 27
28906 Getafe
centro@luznegra.net
Tel: +34 916 416 081

PARIS
113 Avenue Joffre
77450 Esbly
france@luznegra.net
Tel: +33 (0) 160 426 585

Spectrum Test Report



Color Parameters:

Chromaticity Coordinate: $x=0.3150$ $y=0.3285$ $u'=0.1996$ $v'=0.4684$
 CCT=6383K (Duv=0.0018) Dominant WL:Ld =488.3nm Purity=6.5%
 Ratio:R=13.7% G=80.7% B=5.6%; Peak WL:Lp=453.6nm FWHM=22.5nm
 Render Index:Ra=83.1 CRI=75.8 TM30:Rf=80 Rg=94
 R1 =82 R2 =89 R3 =91 R4 =82 R5 =82 R6 =82 R7 =88
 R8 =70 R9 =11 R10=71 R11=80 R12=55 R13=84 R14=95 R15=78

Photo Parameters:

Flux = 1546 lm Eff. : 101.27 lm/W Fe = 5.015 W Scotopic:3432.4 S/P:2.2206

Electrical parameters:

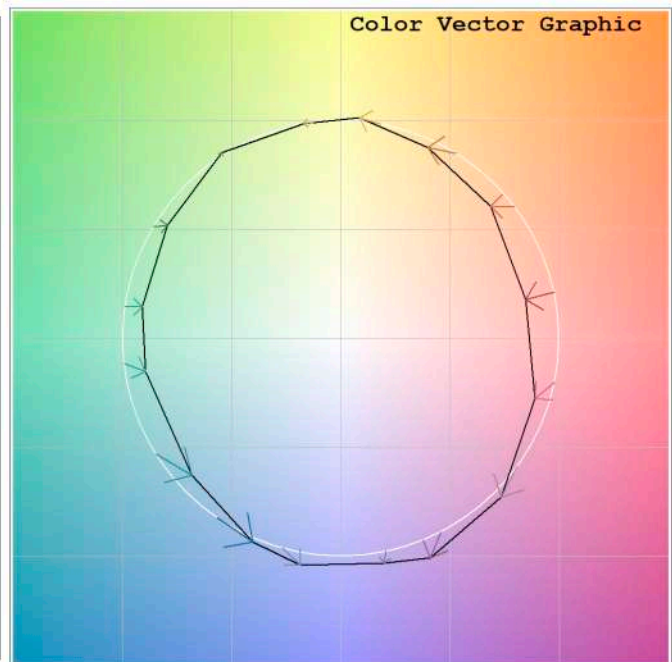
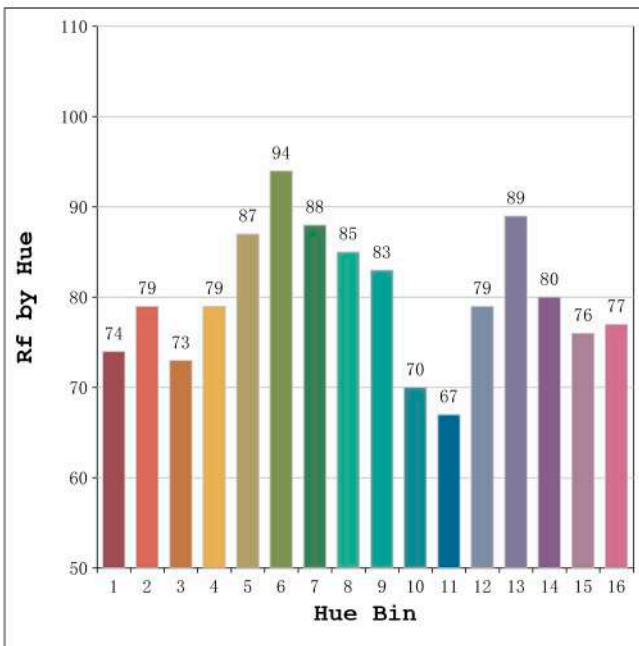
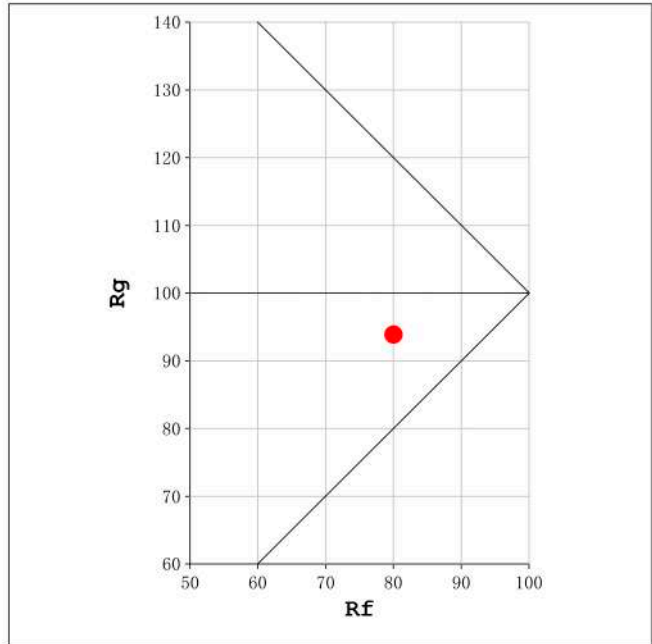
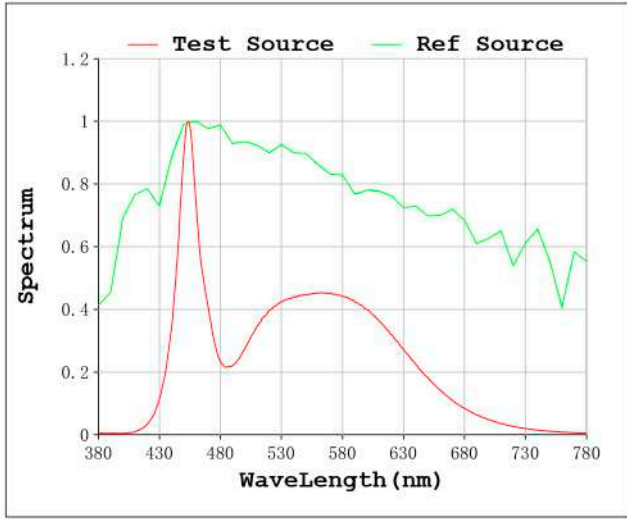
V = 23.998 V I = 0.6360 A P = 15.26 W PF = 1.000

Status: Integral T = 500 ms Ip = 36304 (55%)

Model:Ecoled boxled estanco
 Tester:Sergio Carneros
 Temperature:25Deg
 Manufacturer:Luz Negra S.L.

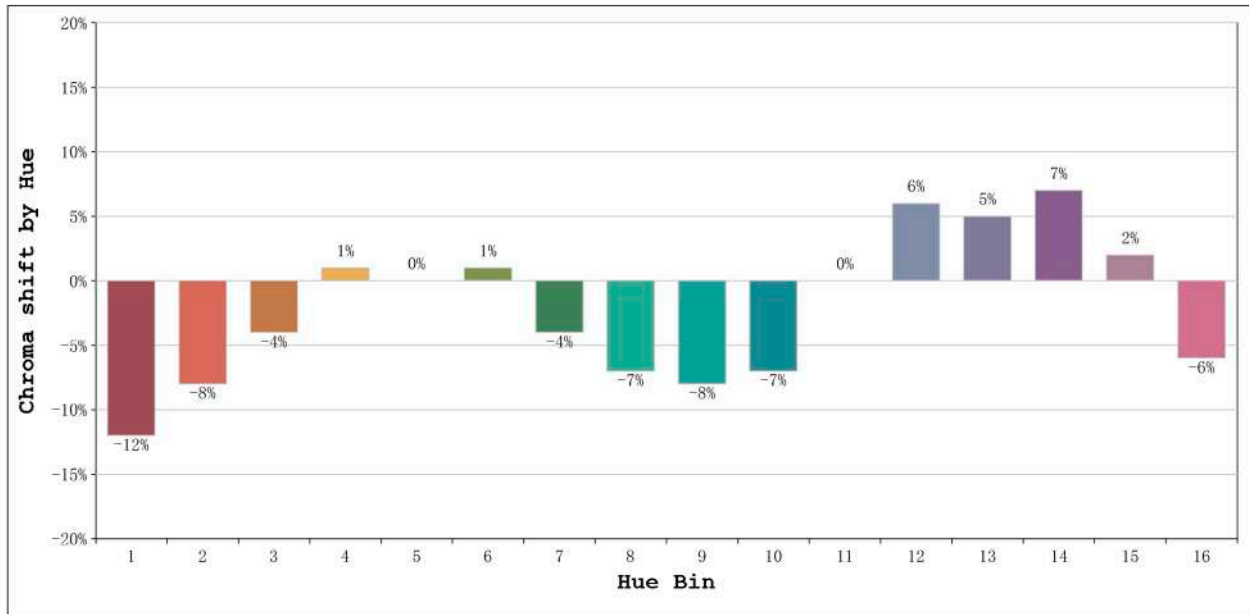
Number: 37.022
 Date:2023-05-10 13:30:52
 Humidity:57%
 Remarks:1 unidad de 500mm

Rf: 80 CCT: 6383 K u': 0.1996
Rg: 94 Duv: 0.0018 v': 0.4684



Model:Ecoled boxed estanco
Tester:Sergio Carneros
Temperature:25Deg
Manufacturer:Luz Negra S.L.

Number: 37.022
Date:2023-05-10 13:30:52
Humidity:57%
Remarks:1 unidad de 500mm



Hue Bin	Hue Angle	Rf	Graphic shift(%)	
			Chroma	Hue
1	0.0° - 22.5°	74	-12	0
2	22.5° - 45.0°	79	-8	7
3	45.0° - 67.5°	73	-4	13
4	67.5° - 90.0°	79	1	10
5	90.0° - 112.5°	87	0	4
6	112.5° - 135.0°	94	1	-1
7	135.0° - 157.5°	88	-4	-3
8	157.5° - 180.0°	85	-7	0
9	180.0° - 202.5°	83	-8	6
10	202.5° - 225.0°	70	-7	17
11	225.0° - 247.5°	67	0	20
12	247.5° - 270.0°	79	6	10
13	270.0° - 292.5°	89	5	-1
14	292.5° - 315.0°	80	7	-9
15	315.0° - 337.5°	76	2	-14
16	337.5° - 360.0°	77	-6	-8

Model:Ecoled boxed estanco
 Tester:Sergio Carneros
 Temperature:25Deg
 Manufacturer:Luz Negra S.L.

Number: 37.022
 Date:2023-05-10 13:30:52
 Humidity:57%
 Remarks:1 unidad de 500mm