

BAJA LUMINOSIDAD

SIDEVIEW 7

TIRAS RIGIDAS

Ref: 37.008 7500K
 Ref: 37.020 4500K
 Ref: 37.021 3000K
 Ref: 37.010 peine de conexión

Tira rígida seccionable, IP20 con 7 leds SMD.

Tira rígida de 500mm cortable cada 1 led.

Puede iluminar cajas de luz con una profundidad de 5 cm.

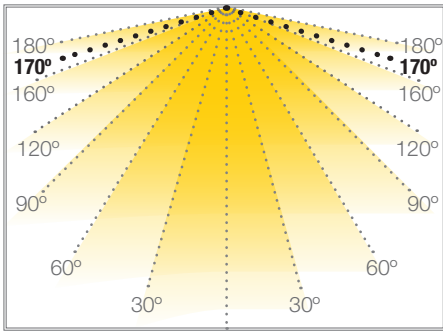
Permite iluminar cajas con 4 cm de profundidad con un peine de circuito cerrado.

Se pueden conectar 20 unidades.

En cajas de mayor profundidad, se conectan utilizando uno sí y otro no.

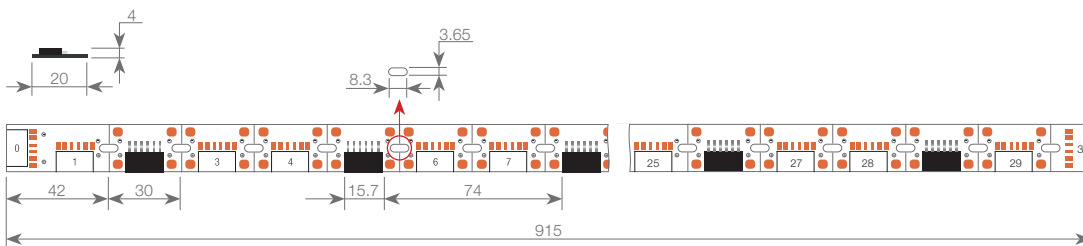
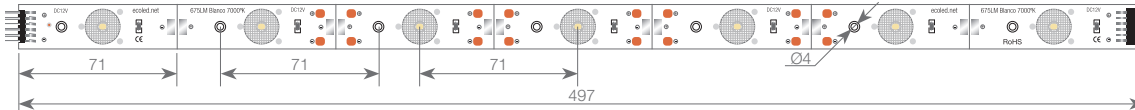
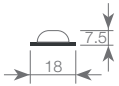
Óptica con barrido 175°.

Uso diario máximo recomendado: 18h



Potencia (W)	7W
Voltaje (V)	12V
Lumens (7500°K)	700Lm
Lumens (4500°K)	600Lm
Lumens (3000°K)	500Lm
Eficiencia	92.8 Lm/W
Emisión de luz	170°
Estanqueidad (IP)	IP20
CRI	>67
Medidas	497x18x1.5mm
Cortable	cada 1 led
Temperatura trabajo	-25°C / +60°C
Fuente de alimentación	no incluida
Fijación	tornillo
Embalaje	pack de 20 unidades
Garantía	2 años

Escala 1:3 (mm)



Aprobado por:  

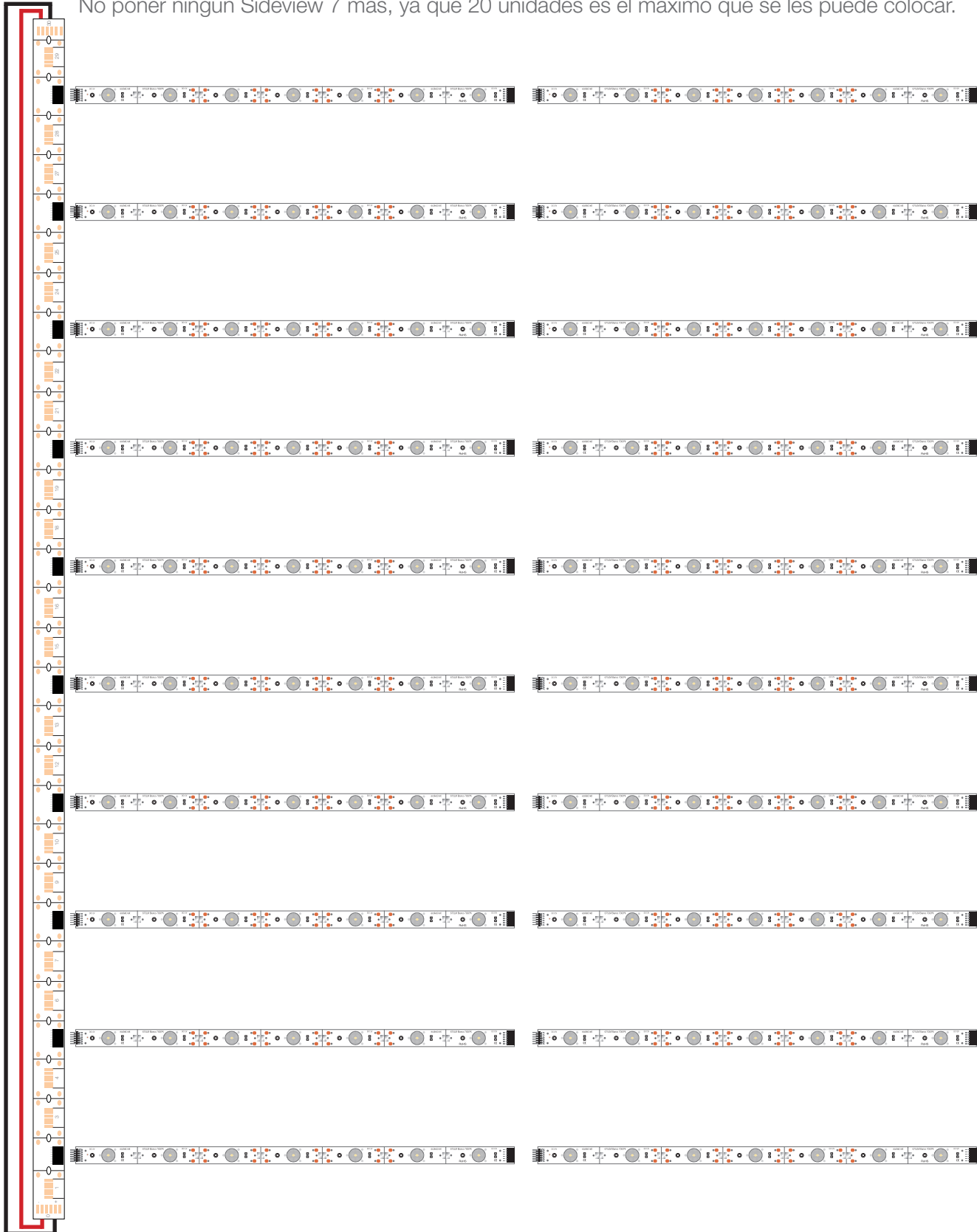
BARCELONA
 C/ Carles Buigues, 13
 08420 Canovelles
 Info@luznegra.net
 Tel: +34 938 402 598

MADRID
 C/ Adaptación, 27
 28906 Getafe
 centro@luznegra.net
 Tel: +34 916 416 081

PARIS
 113 Avenue Joffre
 77450 Esbly
 france@luznegra.net
 Tel: +33 (0) 160 426 585

Con un peine cerrando el circuito se pueden conectar 20 unidades, como se aprecia en el dibujo. En este caso sería para trabajar en cajas de poca profundidad.

No poner ningún Sideview 7 más, ya que 20 unidades es el máximo que se les puede colocar.



PEINE DE CONEXION

TIRAS RIGIDAS

En cajas de mayor profundidad, podemos utilizar un conector si y un conector no, tal y como se aprecia en el dibujo.

No poner más unidades de Sideview 7.

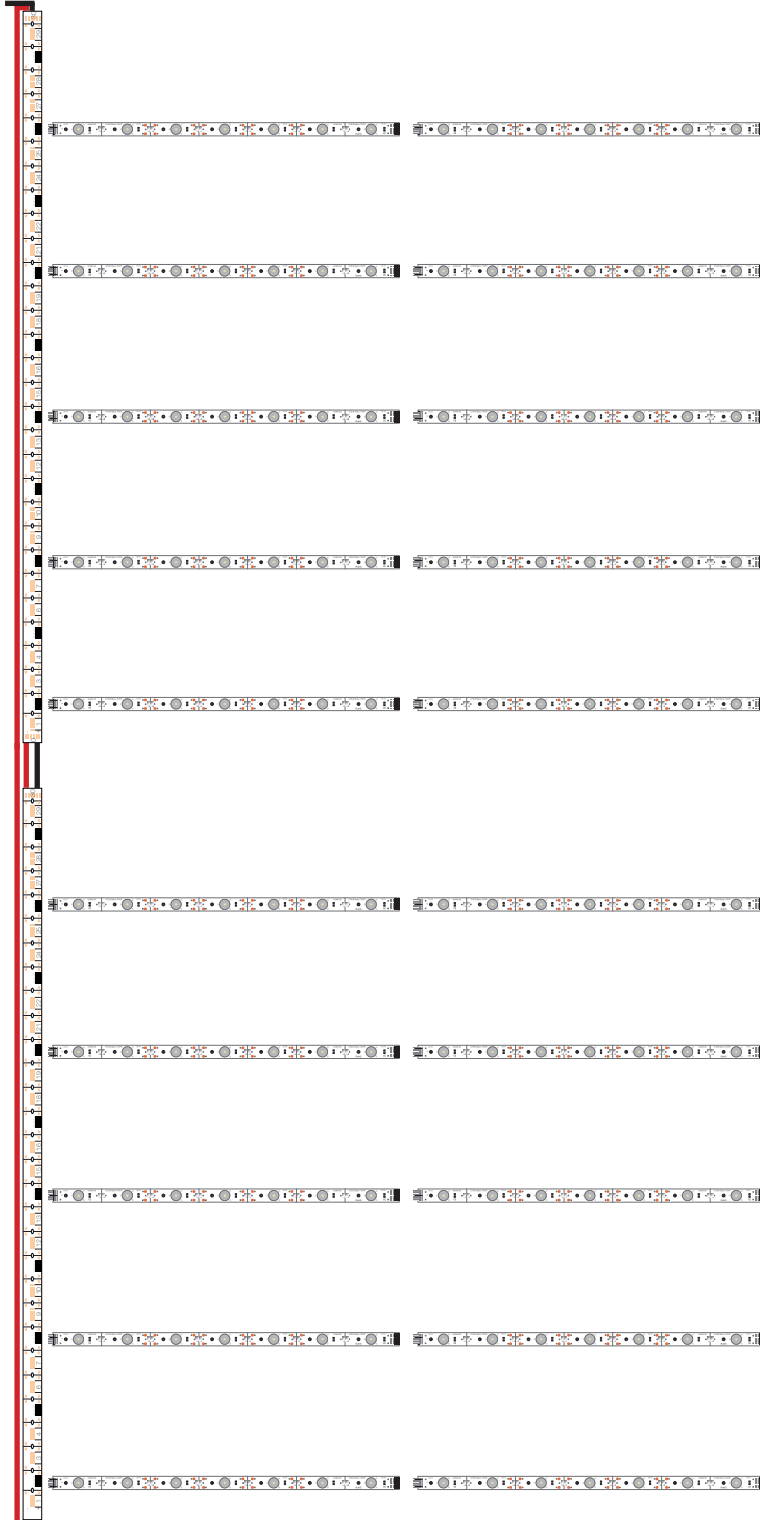


No se pueden conectar más de 4 unidades seguidas en la misma línea.

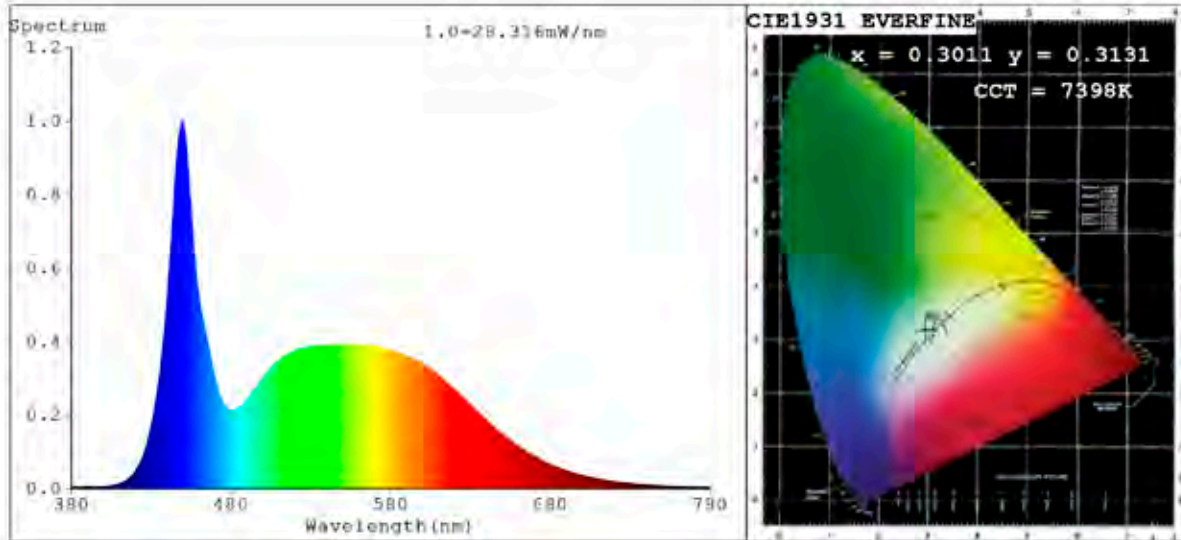
Se aconseja siempre cerrar el circuito, si no fuese el caso se pueden conexas máximo 10 unidades. Máximo un Sideview 7 por conector o máximo dos Sideviews 7 por línea (teniendo en cuenta máximo 10 unidades).

Si en u peine colocamos más de 10 unidades no le podemos colocar otro peine.

Cuando se utilizan dos peines siempre hay que cerrar el circuito.



Spectrum Test Report



Color Parameters:

Chromaticity Coordinate: $x=0.3011$ $y=0.3131$ $u'=0.1957$ $v'=0.4578$
 CCT=7398K (Duv=0.0011) Dominant WL: $\lambda_d = 483.2\text{nm}$ Purity=12.6%
 Ratio: R=13.0% G=81.0% B=6.0%; Peak WL: $\lambda_p = 449.8\text{nm}$ FWHM=21.1nm
 Render Index: Ra=84.4 CRI=77.5 TM30: Rf=82 Rg=96
 R1 =84 R2 =87 R3 =89 R4 =86 R5 =84 R6 =82 R7 =89
 R8 =74 R9 =17 R10=69 R11=85 R12=60 R13=85 R14=94 R15=80

Photo Parameters:

Flux = 727.6 lm Eff. : 104.07 lm/W Fe = 2,440 W Scotopic: 1717.3 S/P: 2.3602

Electrical parameters:

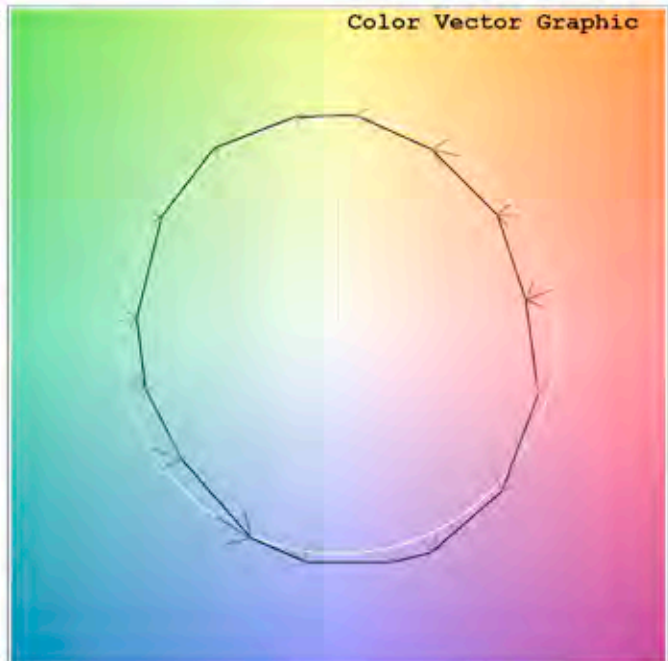
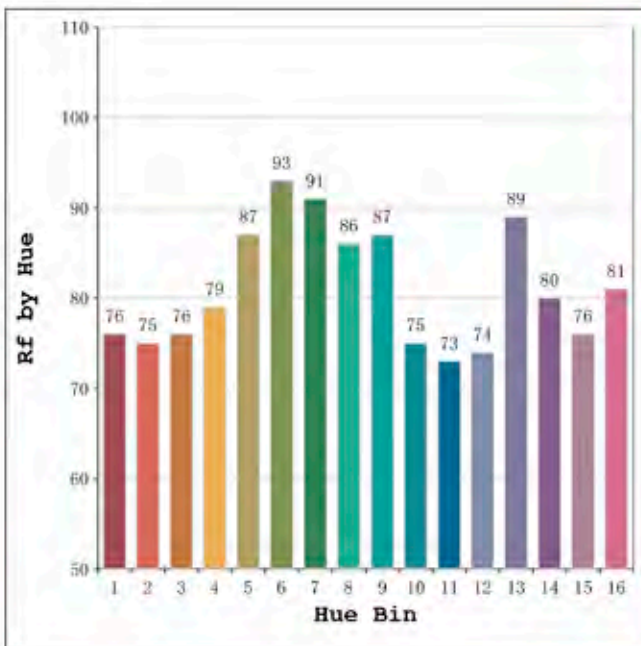
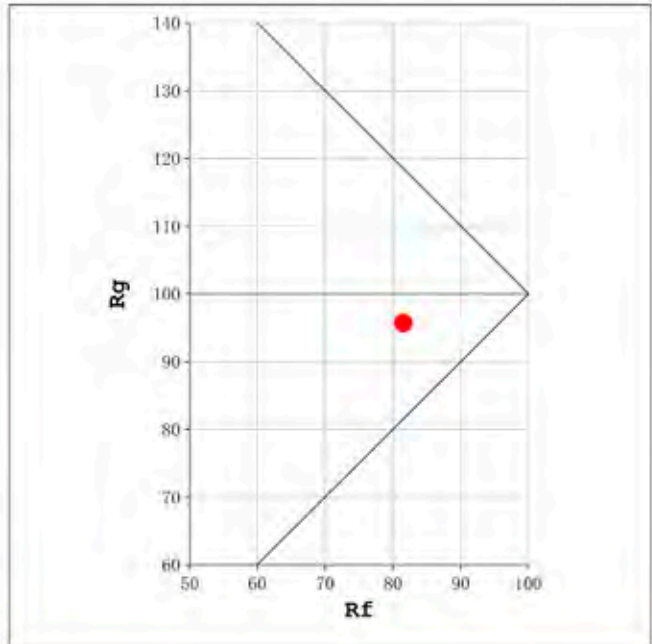
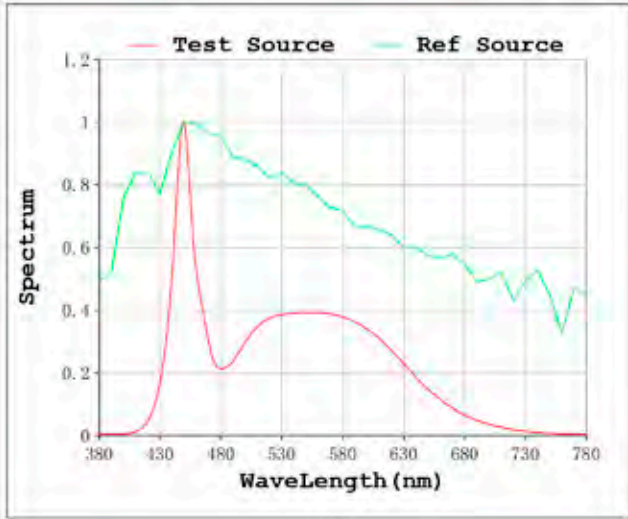
V = 11.998 V I = 0.5827 A P = 6.991 W PF = 1.000

Status: Integral T = 1419 ms Ip = 50969 (78%)

Model: Ecoled sideview 7
 Tester: Sergio Carneros
 Temperature: 25Deg
 Manufacturer: Luz Negra S.L.

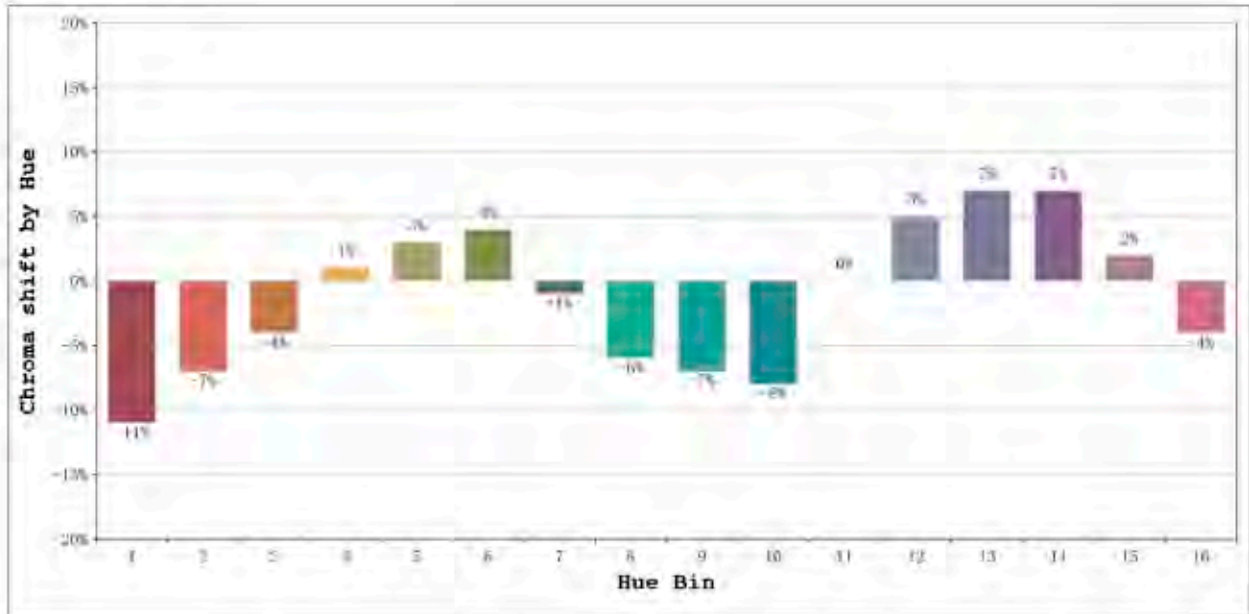
Number: 37.008
 Date: 2023-05-10 13:37:00
 Humidity: 57%
 Remarks: 1 unidad de 497mm

Rf: 82 CCT: 7398 K u': 0.1957
Rg: 96 Duv: 0.0011 v': 0.4578



Model:Ecoled sideview 7
Tester:Sergio Carneros
Temperature:25Deg
Manufacturer:Luz Negra S.L.

Number: 37.008
Date:2023-05-10 13:37:00
Humidity:57%
Remarks:1 unidad de 497mm

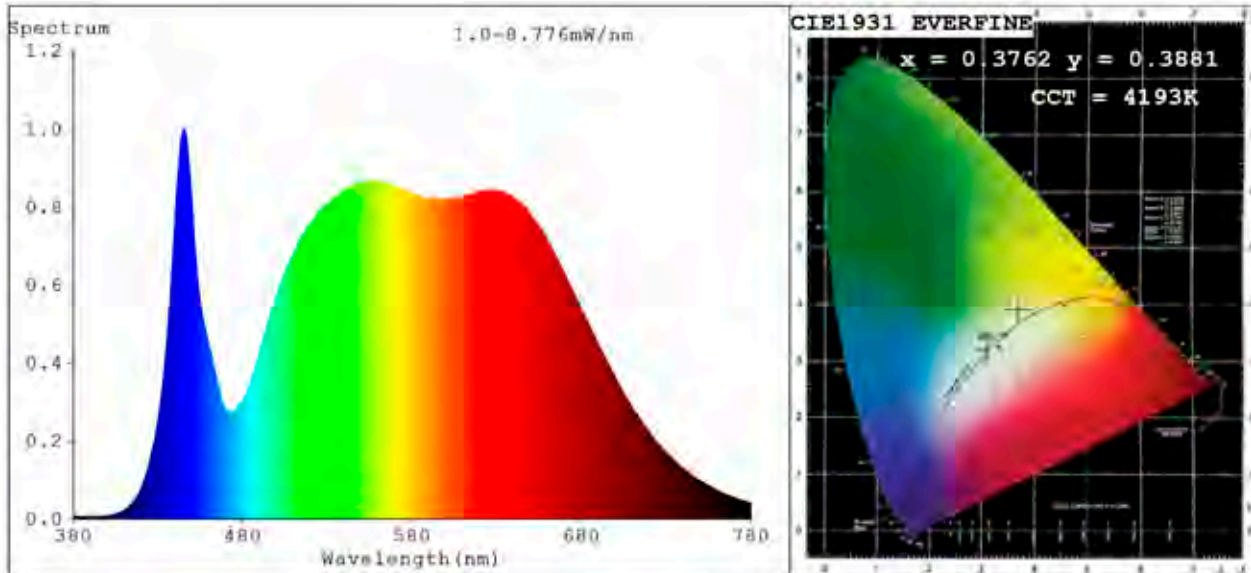


Hue Bin	Hue Angle	Rf	Graphic shift(%)	
			Chroma	Hue
1	0.0° - 22.5°	76	-11	-1
2	22.5° - 45.0°	75	-7	6
3	45.0° - 67.5°	76	-4	12
4	67.5° - 90.0°	79	1	11
5	90.0° - 112.5°	87	3	5
6	112.5° - 135.0°	93	5	0
7	135.0° - 157.5°	91	-1	-3
8	157.5° - 180.0°	86	-6	-2
9	180.0° - 202.5°	87	-7	6
10	202.5° - 225.0°	75	-8	12
11	225.0° - 247.5°	73	0	18
12	247.5° - 270.0°	73	5	11
13	270.0° - 292.5°	89	7	1
14	292.5° - 315.0°	80	7	-7
15	315.0° - 337.5°	76	2	14
16	337.5° - 360.0°	81	-4	-7

Model:Ecoled sideview 7
Tester:Sergio Carneros
Temperature:25Deg
Manufacturer:Luz Negra S.L.

Number: 37.008
Date:2023-05-10 13:37:00
Humidity:57%
Remarks:1 unidad de 497mm

Spectrum Test Report



Color Parameters:

Chromaticity Coordinate: $x=0.3762$ $y=0.3881$ / $u'=0.2180$ $v'=0.5059$
 CCT=4193K (Duv=0.0065) Dominant WL: $L_d = 575.1nm$ Purity=29.4%
 Ratio: R=18.2% G=78.1% B=3.6%; Peak WL: $L_p = 445.0nm$ FWHM=21.3nm
 Render Index: $R_a = 88.9$ CRI=85.1 TM30: $R_f = 91$ $R_g = 99$ $L_{av} = 579.1nm$
 R1 =89 R2 =89 R3 =89 R4 =91 R5 =88 R6 =85 R7 =93
 R8 =88 R9 =65 R10=74 R11=90 R12=69 R13=88 R14=94 R15=87

Photo Parameters:

Flux = 506.1 lm Eff. : 81.76 lm/W $F_e = 1.751 W$ Scotopic: 890.19 S/P: 1.759

Electrical parameters:

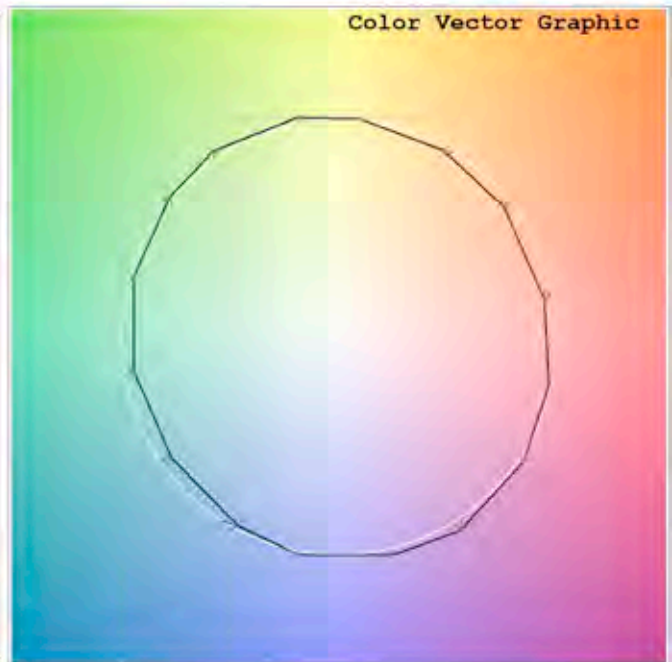
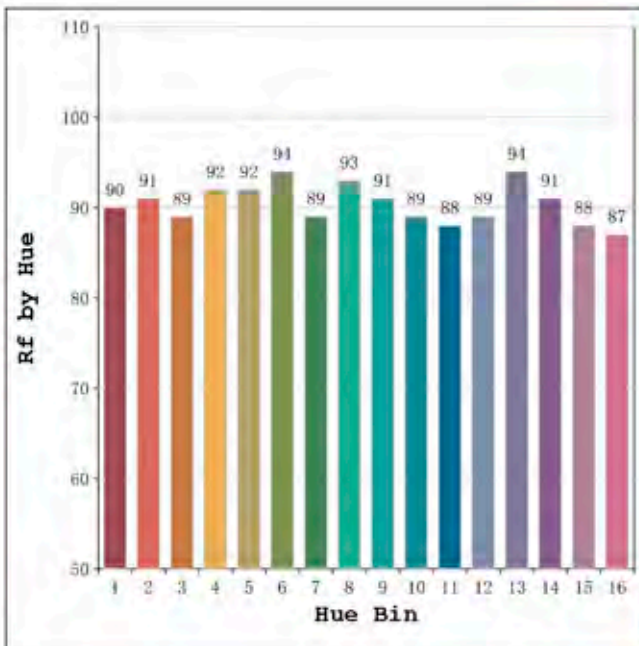
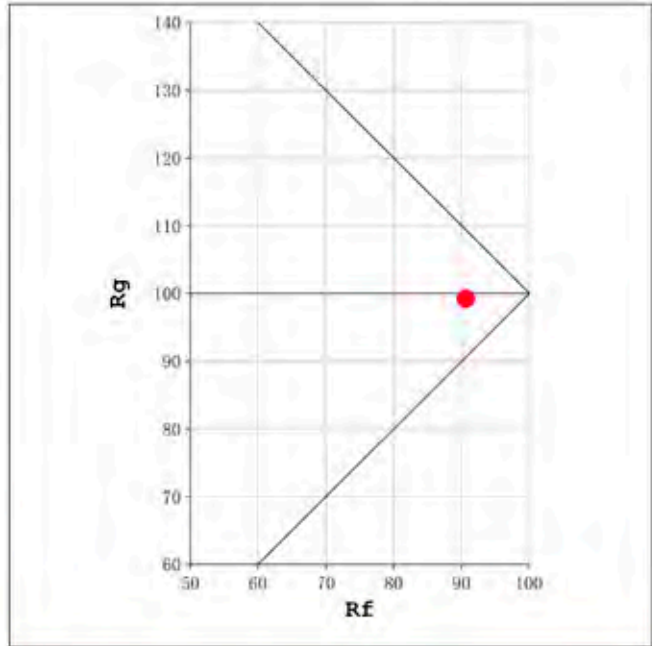
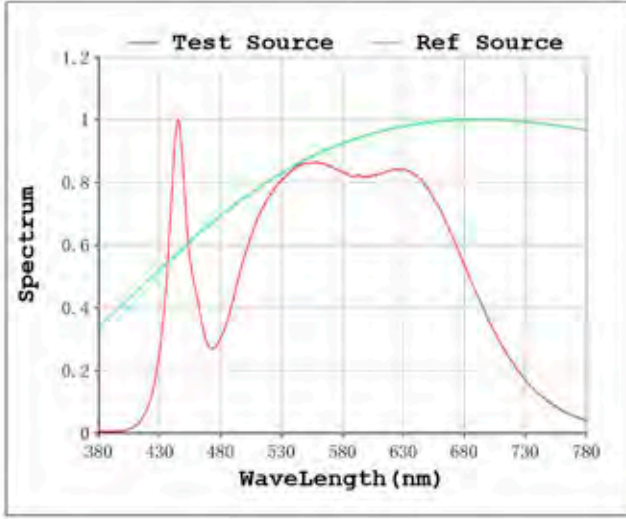
V = 11.998 V I = 0.5159 A P = 6.190 W PF = 1.000

Status: Integral T = 2000 ms $I_p = 32215 (49\%)$

Model: Sideview 7 neutro
 Tester: Sergio Carneros
 Temperature: 27Deg
 Manufacturer: Luz Negra

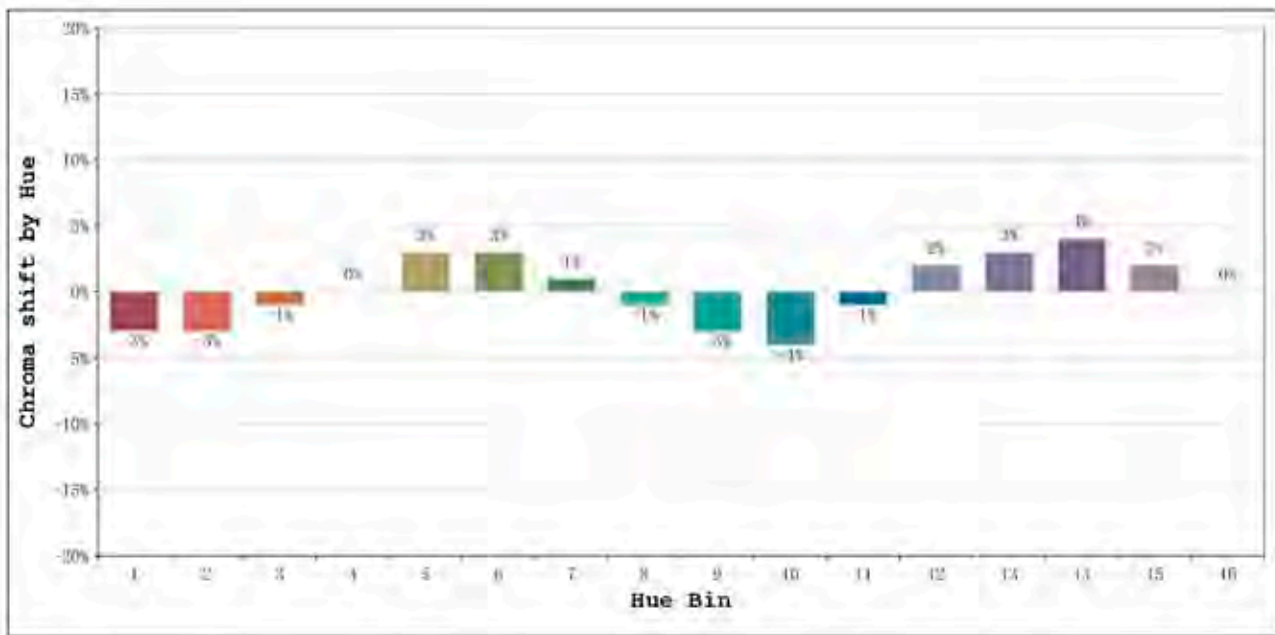
Number: 37.020
 Date: 2020-07-29 07:11:00
 Humidity: 35%
 Remarks: Led modul 50cm

Rf: 91 CCT: 4193 K u': 0.2180
Rg: 99 Duv: 0.0065 v': 0.5059



Model:Sideview 7 neutro
Tester:Sergio Carneros
Temperature:27Deg
Manufacturer:Luz Negra

Number:37.020
Date:2020-07-29 07:11:00
Humidity:35%
Remarks:Led modul 50cm

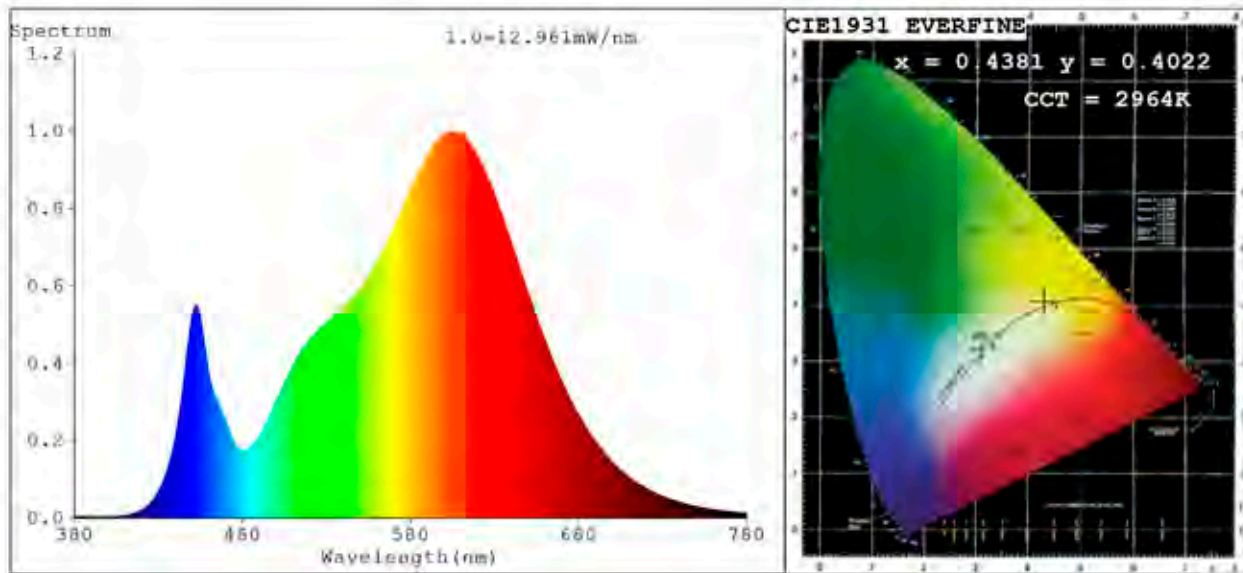


Hue Bin	Hue Angle	Rf	Graphic shift(%)	
			Chroma	Hue
1	0.0° - 22.5°	90	-3	-2
2	22.5° - 45.0°	91	-3	1
3	45.0° - 67.5°	89	-1	5
4	67.5° - 90.0°	92	0	4
5	90.0° - 112.5°	92	3	3
6	112.5° - 135.0°	94	3	0
7	135.0° - 157.5°	89	1	-5
8	157.5° - 180.0°	93	-1	-3
9	180.0° - 202.5°	91	-3	-1
10	202.5° - 225.0°	89	-4	2
11	225.0° - 247.5°	88	-1	7
12	247.5° - 270.0°	89	2	5
13	270.0° - 292.5°	94	3	0
14	292.5° - 315.0°	91	4	-4
15	315.0° - 337.5°	88	2	-6
16	337.5° - 360.0°	87	0	-5

Model:Sideview 7 neutro
 Tester:Sergio Carneros
 Temperature:27Deg
 Manufacturer:Luz Negra

Number:37.020
 Date:2020-07-29 07:11:00
 Humidity:35%
 Remarks:Led modul 50cm

Spectrum Test Report



Color Parameters:

Chromaticity Coordinate: $x=0.4381$ $y=0.4022$ $u'=0.2522$ $v'=0.5208$
 CCT=2964K (Duv=-0.0009) Dominant WL: $L_d = 583.3\text{nm}$ Purity=52.2%
 Ratio: R=23.4% G=74.2% B=2.5% ; Peak WL: $L_p = 605.5\text{nm}$ FWHM=127.0nm
 Render Index: Ra=83.3 CRI=78.1 TM30: Rf=82 Rg=97 Lav=589.9nm
 R1 =82 R2 =92 R3 =96 R4 =82 R5 =82 R6 =90 R7 =83
 R8 =60 R9 =10 R10=80 R11=81 R12=72 R13=85 R14=99 R15=75

Photo Parameters:

Flux = 622.1 lm Eff. : 96.77 lm/W Fe = 1.892 W Scotopic: 829.41 S/P: 1.3333

Electrical parameters:

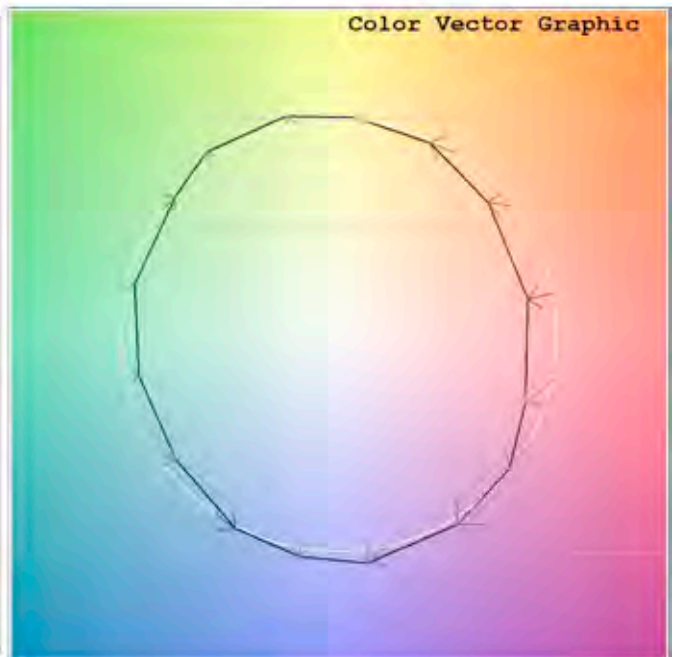
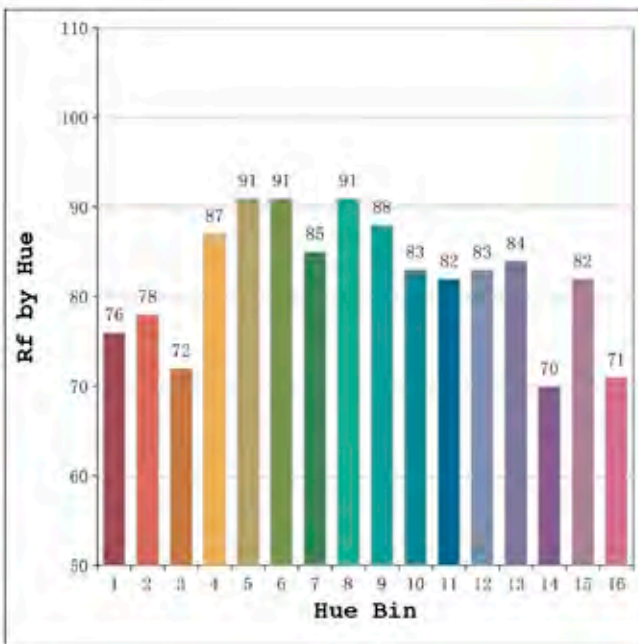
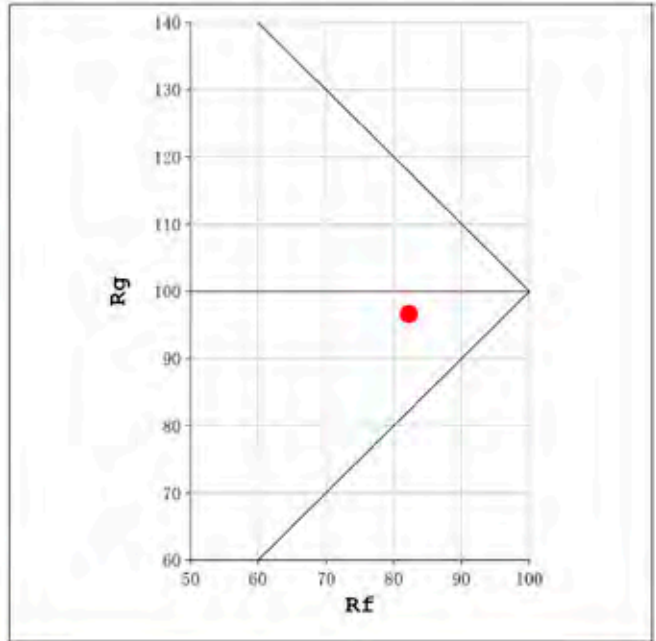
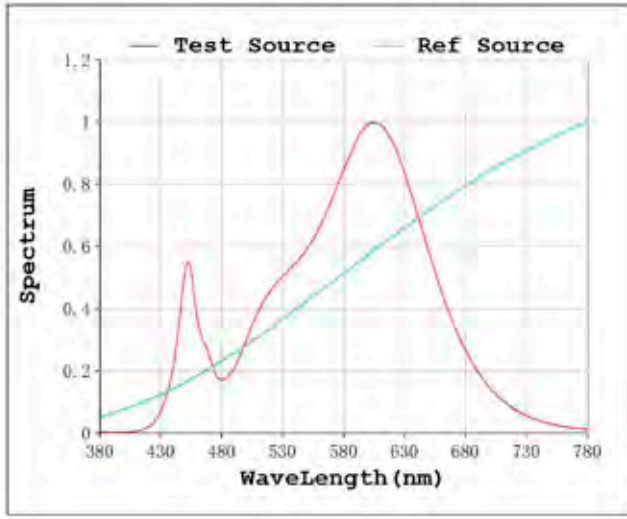
V = 11.998 V I = 0.5358 A P = 6.429 W PF = 1.000

Status: Integral T = 2000 ms Ip = 48442 (74%)

Model: Sideview 7 cálido
 Tester: Sergio Carneros
 Temperature: 27Deg
 Manufacturer: Luz Negra

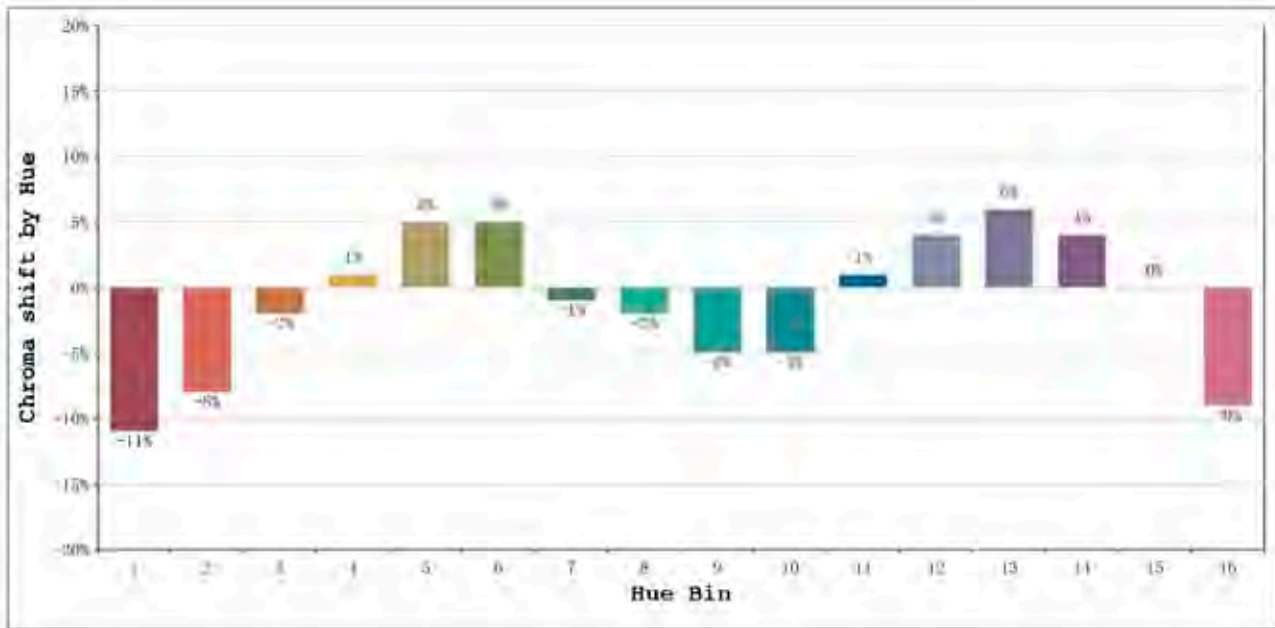
Number: 37.021
 Date: 2020-07-29 07:15:09
 Humidity: 35%
 Remarks: Led modul 50cm

Rf: 82 CCT: 2964 K u': 0.2522
Rg: 97 Duv: -0.0009 v': 0.5208



Model:Sideview 7 cálido
Tester:Sergio Carneros
Temperature:27Deg
Manufacturer:Luz Negra

Number:37.021
Date:2020-07-29 07:15:09
Humidity:35%
Remarks:Led modul 50cm



Hue Bin	Hue Angle	Rf	Graphic shift(%)	
			Chroma	Hue
1	0.0° - 22.5°	76	-11	0
2	22.5° - 45.0°	78	-8	7
3	45.0° - 67.5°	72	-2	12
4	67.5° - 90.0°	87	1	7
5	90.0° - 112.5°	91	5	4
6	112.5° - 135.0°	91	5	-1
7	135.0° - 157.5°	85	-1	-7
8	157.5° - 180.0°	91	-2	-2
9	180.0° - 202.5°	88	-5	1
10	202.5° - 225.0°	83	-5	8
11	225.0° - 247.5°	82	1	11
12	247.5° - 270.0°	83	1	6
13	270.0° - 292.5°	84	6	-10
14	292.5° - 315.0°	70	4	-16
15	315.0° - 337.5°	82	0	-11
16	337.5° - 360.0°	71	-9	-12

Model:Sideview 7 cálido
 Tester:Sergio Carneros
 Temperature:27Deg
 Manufacturer:Luz Negra

Number:37.021
 Date:2020-07-29 07:15:09
 Humidity:35%
 Remarks:Led modul 50cm