

## LOW BRIGHTNESS

Ref: 37.008 7500°K  
 Ref: 37.020 4500°K  
 Ref: 37.021 3000°K  
 Ref: 37.010 strip connection

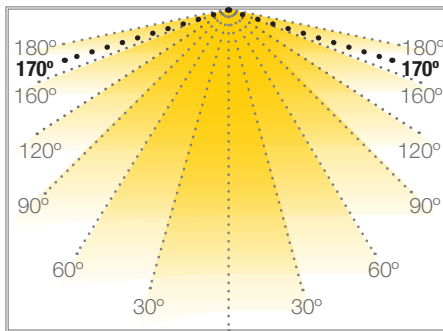
Cutttable rigid led strip series, IP20 and 7 leds SMD.  
 500mm rigid led strip cuttable every 1 led.

It can light up light boxes up to depths of 4cm with a cross connection comb (in a closed circuit).

We can connect up to 20 units.

In light boxes with increased depths, the connections are alternate.

Daily recommended use: 18h.



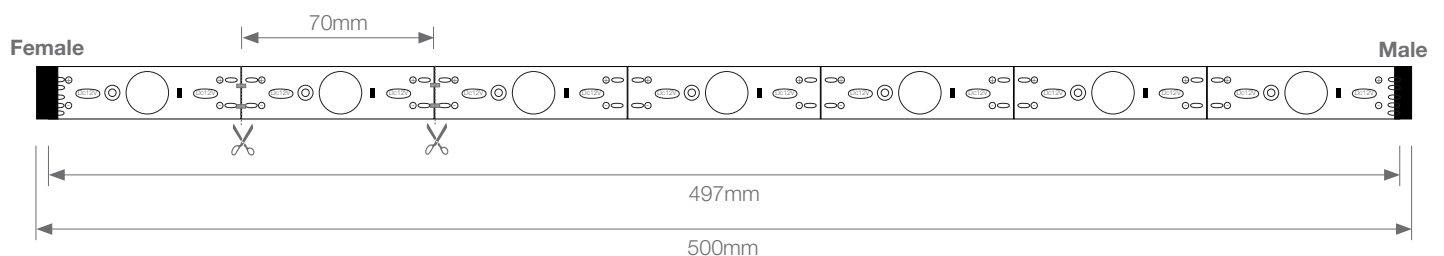
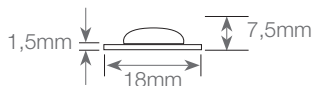
## SIDEVIEW 7

## RIGID STRIP



Voltage	12V
Power (W)	7W
Lumens (7500°K)	700Lm
Lumens (4500°K)	600Lm
Lumens (3000°K)	500Lm
Efficiency	92.8 Lm/W
Light emission	170°
Waterproofing	IP20
CRI	>67
Measurements	497x18x1.5mm
Cutttable	every led (1 led <sup>d</sup> )
Working temp.	-25°C / +60°C
Power supply	not included
Fixing	screw
Packaging	pack of 20 units
Guarantee	2 years

Approved by: 



**BARCELONA**  
 C/ Carles Buigues, 13  
 08420 Canovelles  
 Info@luznegra.net  
 Tel: +34 938 402 598

**MADRID**  
 C/ Adaptación, 27  
 28906 Getafe  
 centro@luznegra.net  
 Tel: +34 916 416 081

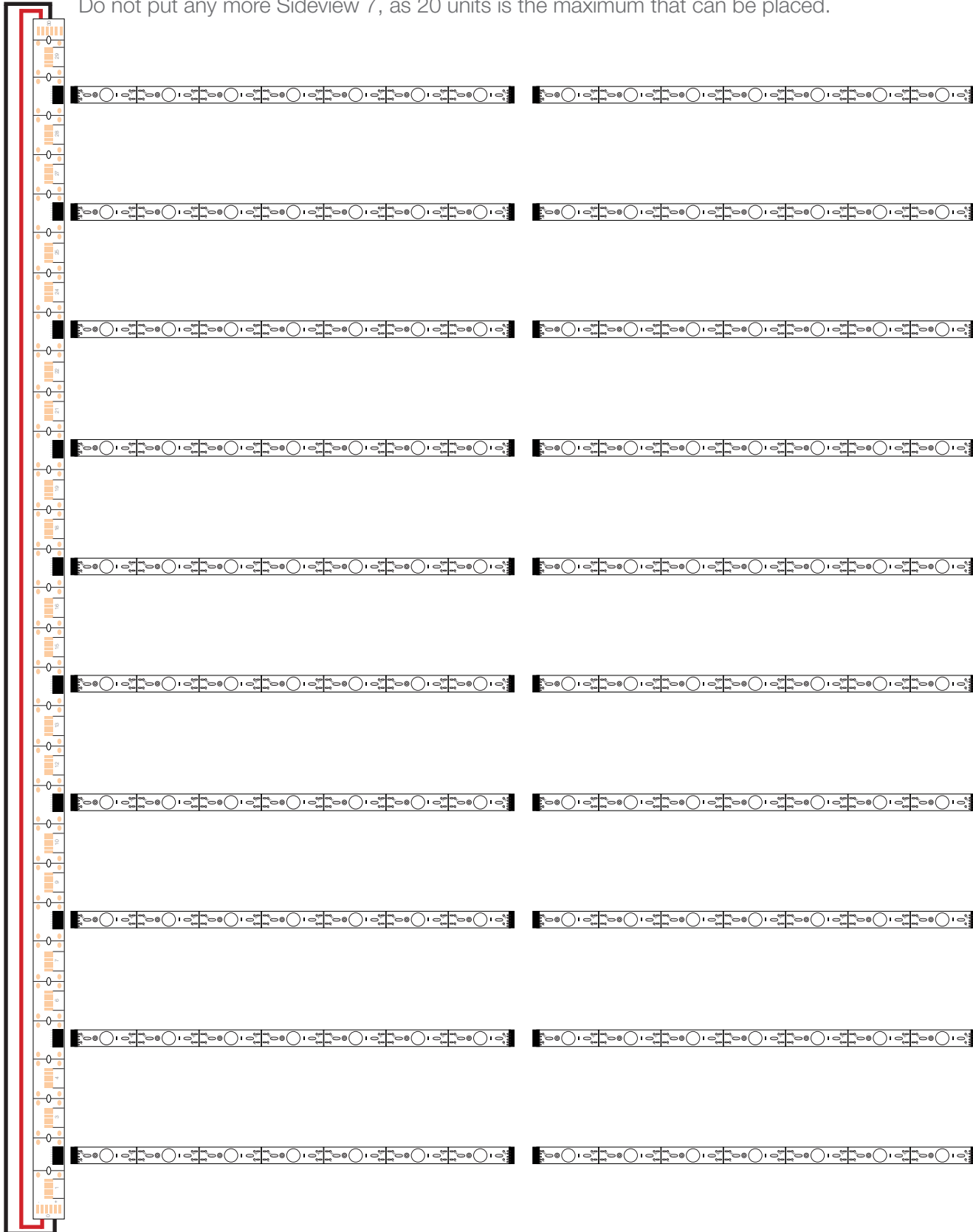
**PARIS**  
 113 Avenue Joffre  
 77450 Esbly  
 france@luznegra.net  
 Tel: +33 (0) 160 426 585

## CONNECTION COMB

## RIGID STRIP

With a comb closing the circuit you can connect 20 units, as seen in the drawing.  
In this case it would be to work in shallow boxes.

Do not put any more Sideview 7, as 20 units is the maximum that can be placed.



**CONNECTION COMB**

**RIGID STRIP**

In larger boxes, we can use a connector if and a connector does not, as seen in the drawing.  
Do not put any more Sideview 7 units.



**CONNECTION COMB**

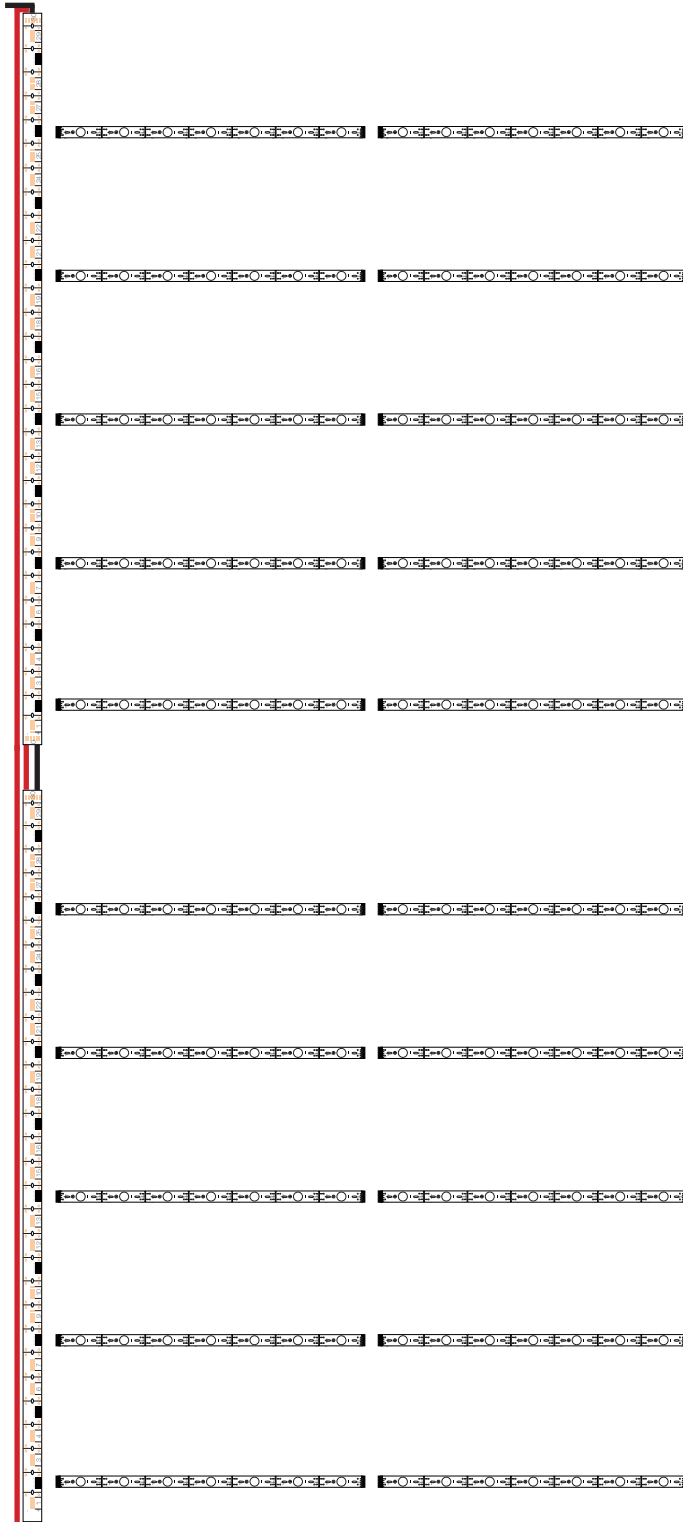
**RIGID STRIP**

No more than 4 units can be connected in a row on the same line.

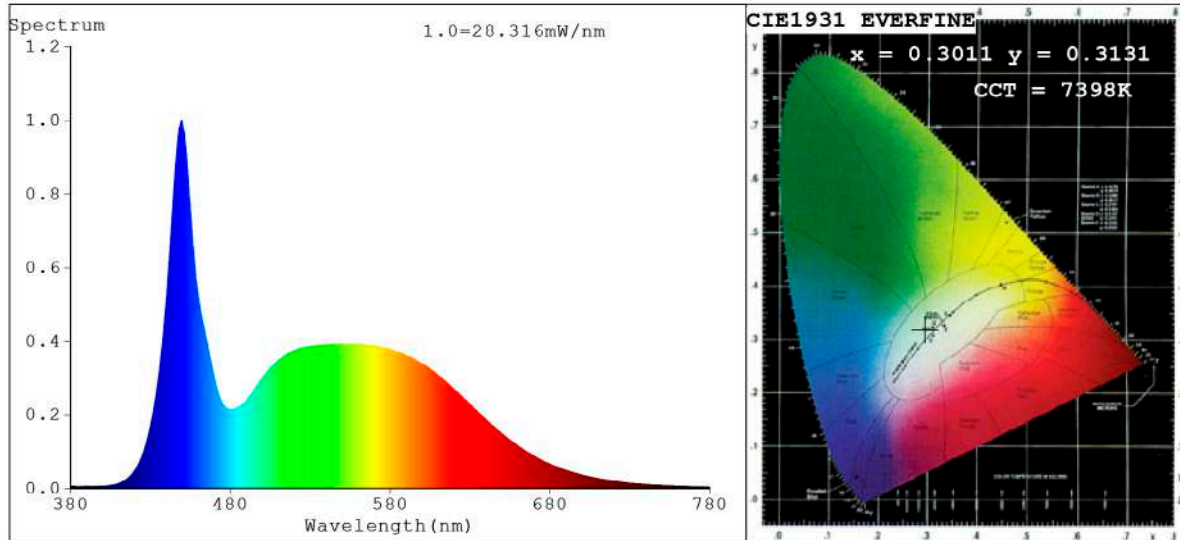
It is always advisable to close the circuit, if otherwise maximum 10 units can be connected.

Maximum one Sideview 7 per connector or maximum two Sideviews 7 per line (taking into account maximum 10 units).

If we put more than 10 units on a comb, we can't put another comb on it. When using two combs you always have to close the circuit.



**Spectrum Test Report**



**Color Parameters:**

Chromaticity Coordinate:  $x=0.3011$   $y=0.3131/u'=0.1957$   $v'=0.4578$   
 CCT=7398K (Duv=0.0011) Dominant WL:Ld =483.2nm Purity=12.6%  
 Ratio:R=13.0% G=81.0% B=6.0%;;Peak WL:Lp=449.8nm FWHM=21.1nm  
 Render Index:Ra=84.4 CRI=77.5 TM30:Rf=82 Rg=96  
 R1 =84 R2 =87 R3 =89 R4 =86 R5 =84 R6 =82 R7 =89  
 R8 =74 R9 =17 R10=69 R11=85 R12=60 R13=85 R14=94 R15=80

**Photo Parameters:**

Flux = 727.6 lm Eff. : 104.07 lm/W Fe = 2.440 W Scotopic:1717.3 S/P:2.3602

**Electrical parameters:**

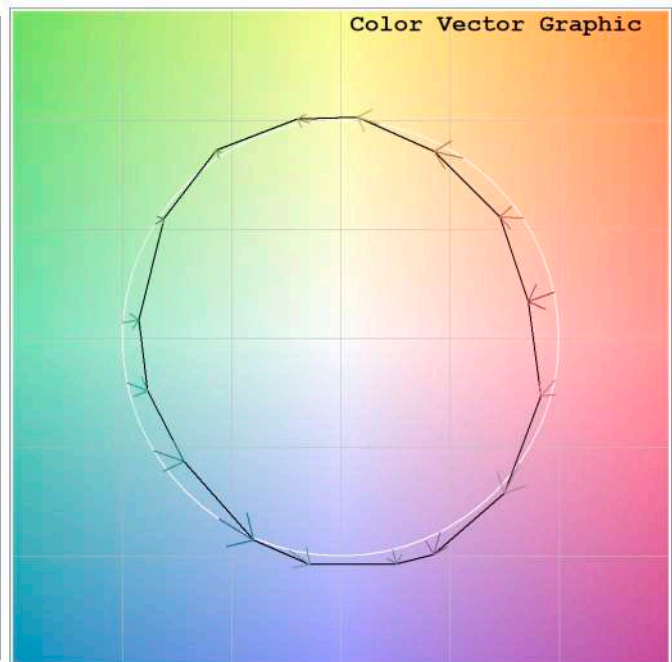
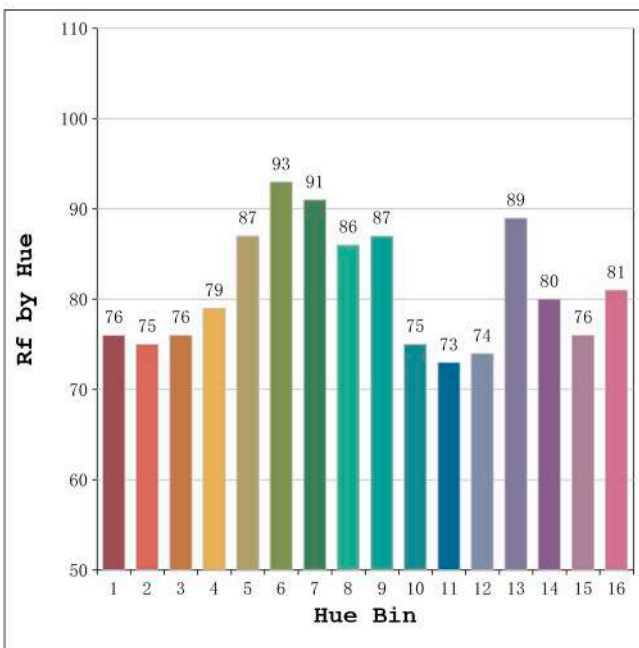
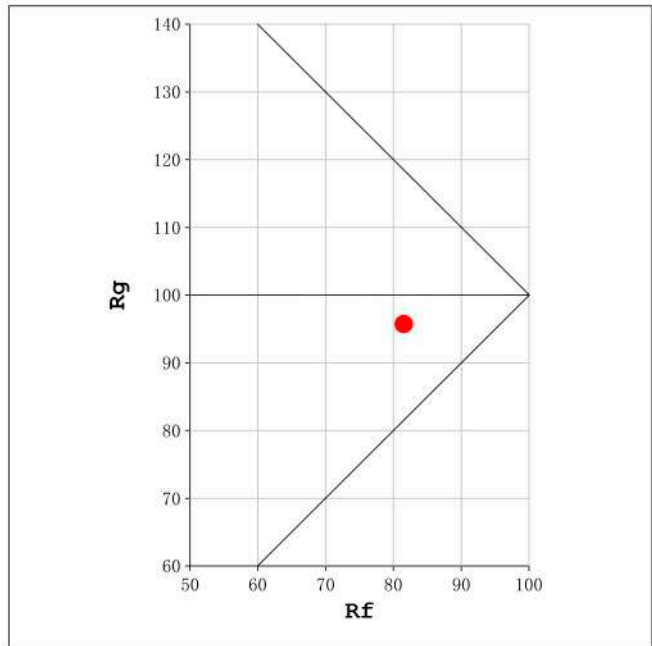
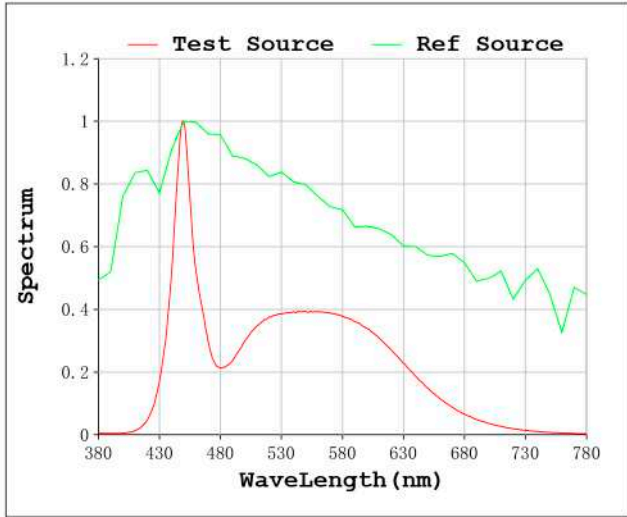
V = 11.998 V I = 0.5827 A P = 6.991 W PF = 1.000

Status: Integral T = 1419 ms Ip = 50969 (78%)

Model:Ecoled sideview 7  
 Tester:Sergio Carneros  
 Temperature:25Deg  
 Manufacturer:Luz Negra S.L.

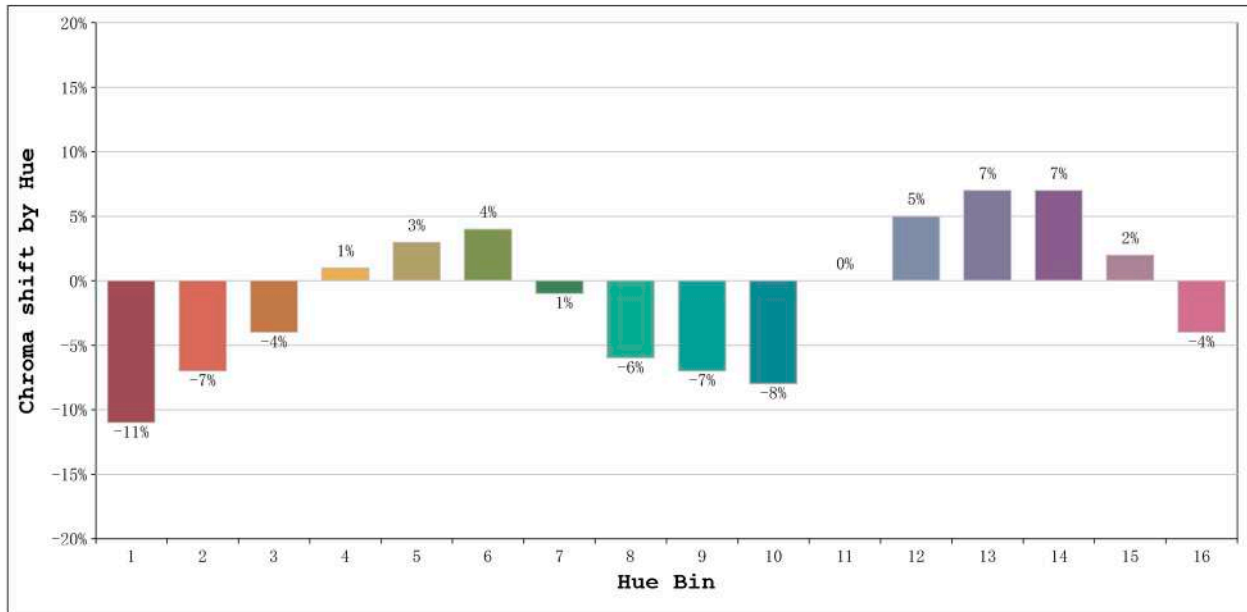
Number: 37.008  
 Date:2023-05-10 13:37:00  
 Humidity:57%  
 Remarks:1 unidad de 497mm

Rf: 82      CCT: 7398 K      u': 0.1957  
Rg: 96      Duv: 0.0011      v': 0.4578



Model:Ecoled sideview 7  
Tester:Sergio Carneros  
Temperature:25Deg  
Manufacturer:Luz Negra S.L.

Number: 37.008  
Date:2023-05-10 13:37:00  
Humidity:57%  
Remarks:1 unidad de 497mm

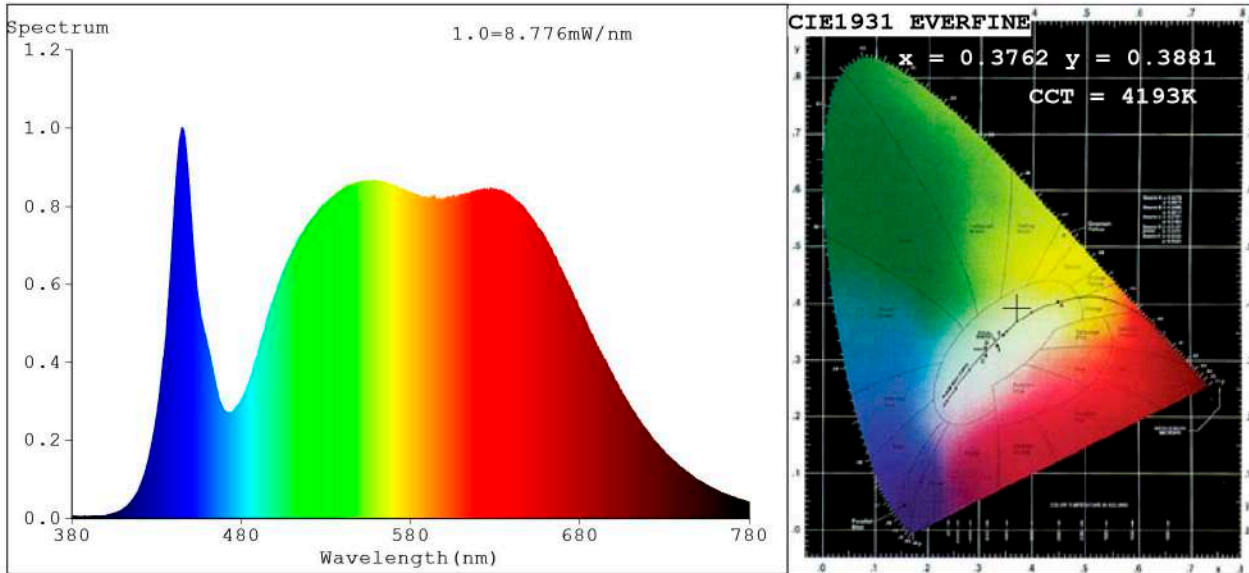


Hue Bin	Hue Angle	Rf	Graphic shift(%)	
			Chroma	Hue
1	0.0° - 22.5°	76	-11	-1
2	22.5° - 45.0°	75	-7	6
3	45.0° - 67.5°	76	-4	12
4	67.5° - 90.0°	79	1	11
5	90.0° - 112.5°	87	3	5
6	112.5° - 135.0°	93	4	0
7	135.0° - 157.5°	91	-1	-3
8	157.5° - 180.0°	86	-6	-2
9	180.0° - 202.5°	87	-7	6
10	202.5° - 225.0°	75	-8	12
11	225.0° - 247.5°	73	0	18
12	247.5° - 270.0°	74	5	11
13	270.0° - 292.5°	89	7	1
14	292.5° - 315.0°	80	7	-7
15	315.0° - 337.5°	76	2	-14
16	337.5° - 360.0°	81	-4	-7

Model:Ecoled sideview 7  
 Tester:Sergio Carneros  
 Temperature:25Deg  
 Manufacturer:Luz Negra S.L.

Number: 37.008  
 Date:2023-05-10 13:37:00  
 Humidity:57%  
 Remarks:1 unidad de 497mm

**Spectrum Test Report**



**Color Parameters:**

Chromaticity Coordinate:  $x=0.3762$   $y=0.3881$  /  $u'=0.2180$   $v'=0.5059$   
 CCT=4193K (Duv=0.0065) Dominant WL:Ld =575.1nm Purity=29.4%  
 Ratio:R=18.2% G=78.1% B=3.6%; Peak WL:Lp=445.0nm FWHM=21.3nm  
 Render Index:Ra=88.9 CRI=85.1 TM30:Rf=91 Rg=99 Lav=579.1nm  
 R1 =89 R2 =89 R3 =89 R4 =91 R5 =88 R6 =85 R7 =93  
 R8 =88 R9 =65 R10=74 R11=90 R12=69 R13=88 R14=94 R15=87

**Photo Parameters:**

Flux = 506.1 lm Eff. : 81.76 lm/W Fe = 1.751 W Scotopic:890.19 S/P:1.759

**Electrical parameters:**

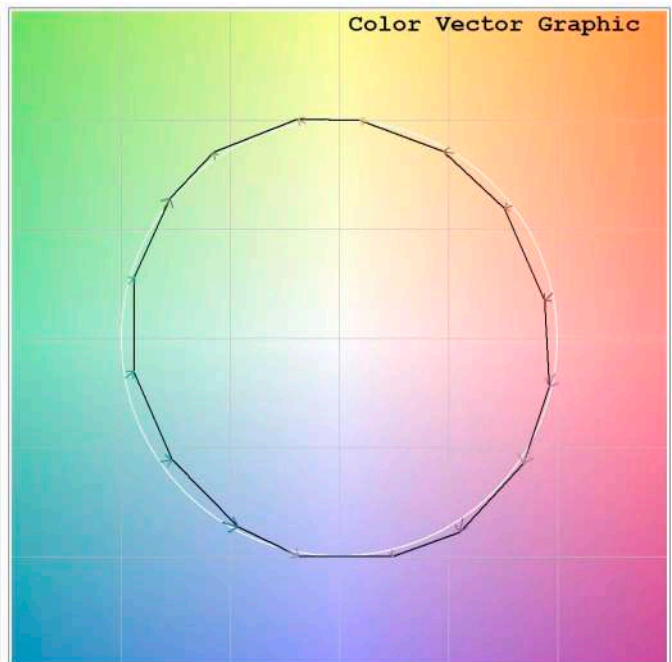
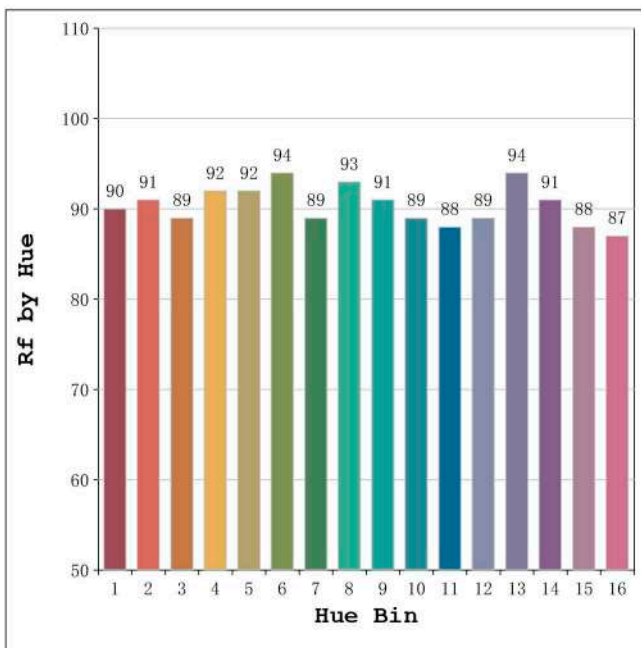
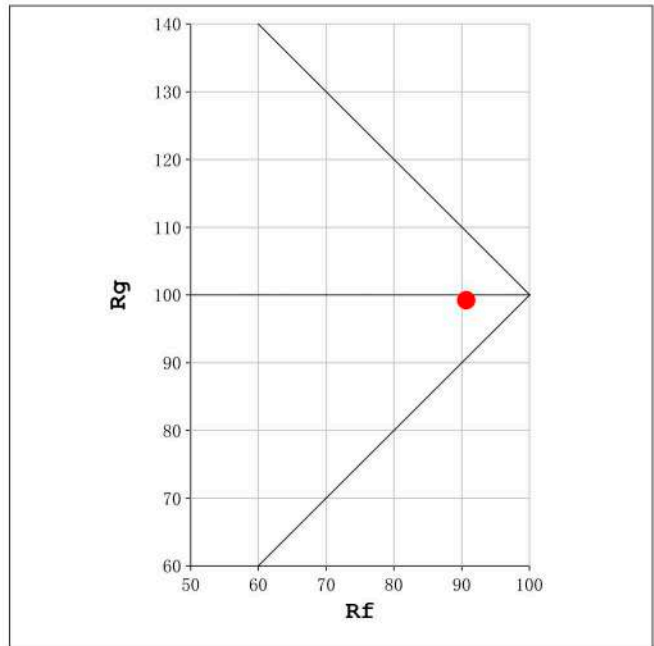
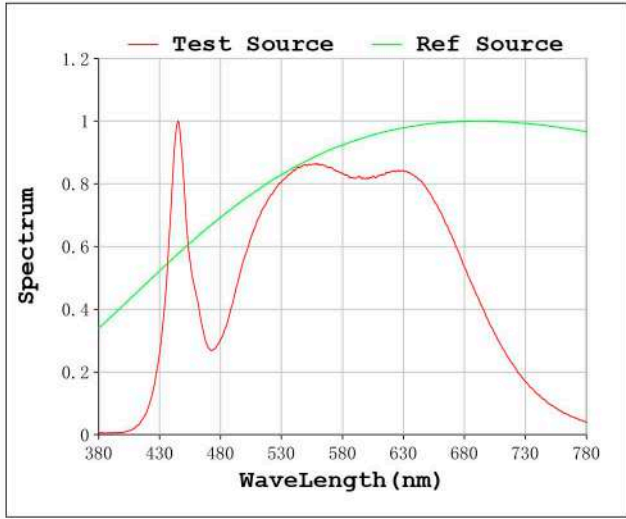
V = 11.998 V I = 0.5159 A P = 6.190 W PF = 1.000

Status: Integral T = 2000 ms Ip = 32215 (49%)

Model:Sideview 7 neutro	Number:37.020
Tester:Sergio Carneros	Date:2020-07-29 07:11:00
Temperature:27Deg	Humidity:35%
Manufacturer:Luz Negra	Remarks:Led modul 50cm

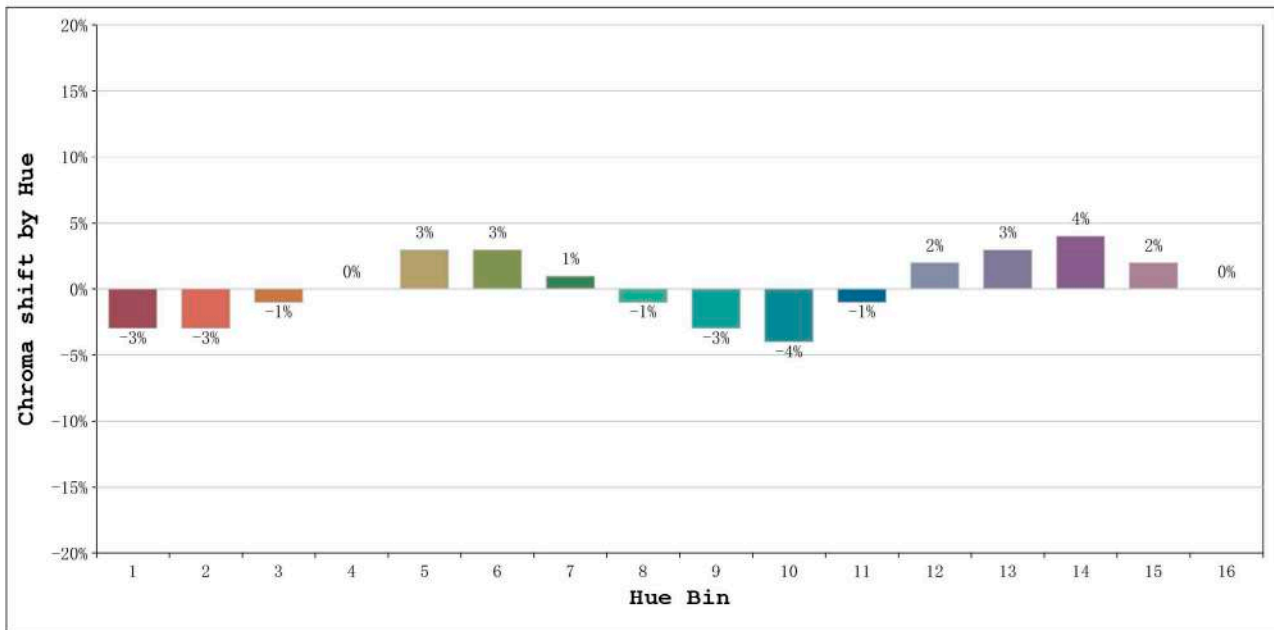


Rf: 91      CCT: 4193 K      u': 0.2180  
Rg: 99      Duv: 0.0065      v': 0.5059



Model:Sideview 7 neutro  
Tester:Sergio Carneros  
Temperature:27Deg  
Manufacturer:Luz Negra

Number:37.020  
Date:2020-07-29 07:11:00  
Humidity:35%  
Remarks:Led modul 50cm

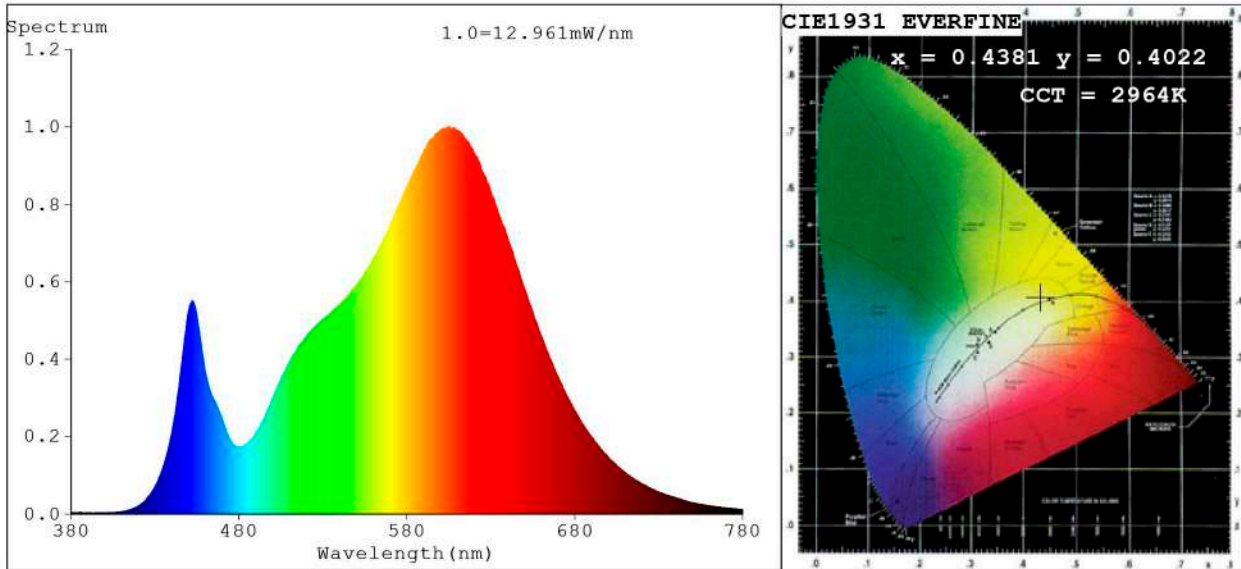


Hue Bin	Hue Angle	Rf	Graphic shift(%)	
			Chroma	Hue
1	0.0° - 22.5°	90	-3	-2
2	22.5° - 45.0°	91	-3	1
3	45.0° - 67.5°	89	-1	5
4	67.5° - 90.0°	92	0	4
5	90.0° - 112.5°	92	3	3
6	112.5° - 135.0°	94	3	0
7	135.0° - 157.5°	89	1	-5
8	157.5° - 180.0°	93	-1	-3
9	180.0° - 202.5°	91	-3	-1
10	202.5° - 225.0°	89	-4	2
11	225.0° - 247.5°	88	-1	7
12	247.5° - 270.0°	89	2	5
13	270.0° - 292.5°	94	3	0
14	292.5° - 315.0°	91	4	-4
15	315.0° - 337.5°	88	2	-6
16	337.5° - 360.0°	87	0	-5

Model:Sideview 7 neutro  
 Tester:Sergio Carneros  
 Temperature:27Deg  
 Manufacturer:Luz Negra

Number:37.020  
 Date:2020-07-29 07:11:00  
 Humidity:35%  
 Remarks:Led modul 50cm

**Spectrum Test Report**



**Color Parameters:**

Chromaticity Coordinate:  $x=0.4381$   $y=0.4022$   $u'=0.2522$   $v'=0.5208$   
 CCT=2964K (Duv=-0.0009) Dominant WL:Ld =583.3nm Purity=52.2%  
 Ratio:R=23.4% G=74.2% B=2.5%; Peak WL:Lp=605.5nm FWHM=127.0nm  
 Render Index:Ra=83.3 CRI=78.1 TM30:Rf=82 Rg=97 Lav=589.9nm  
 R1 =82 R2 =92 R3 =96 R4 =82 R5 =82 R6 =90 R7 =83  
 R8 =60 R9 =10 R10=80 R11=81 R12=72 R13=85 R14=99 R15=75

**Photo Parameters:**

Flux = 622.1 lm Eff. : 96.77 lm/W Fe = 1.892 W Scotopic:829.41 S/P:1.3333

**Electrical parameters:**

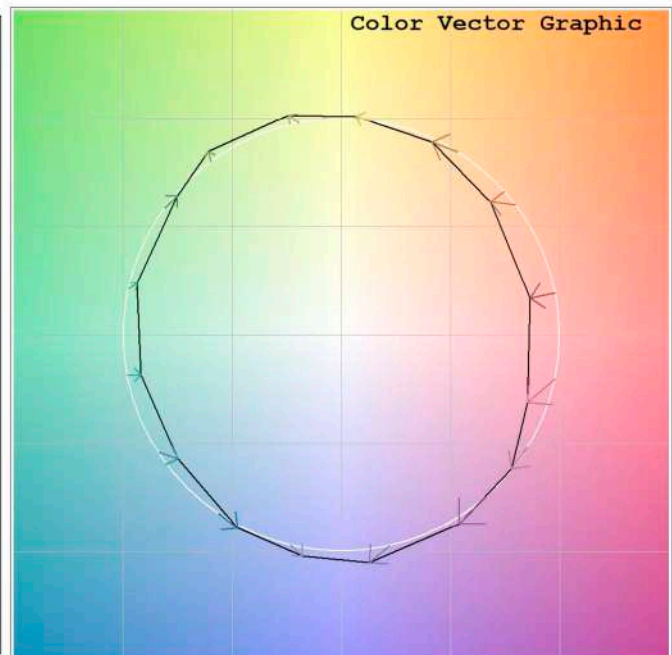
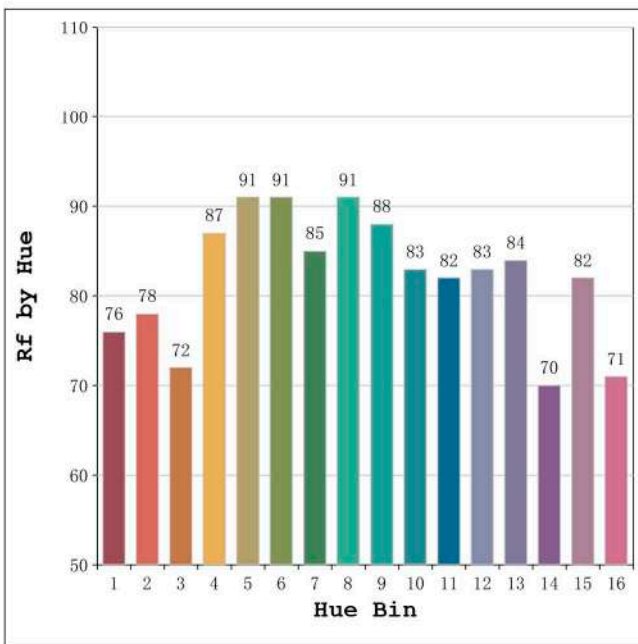
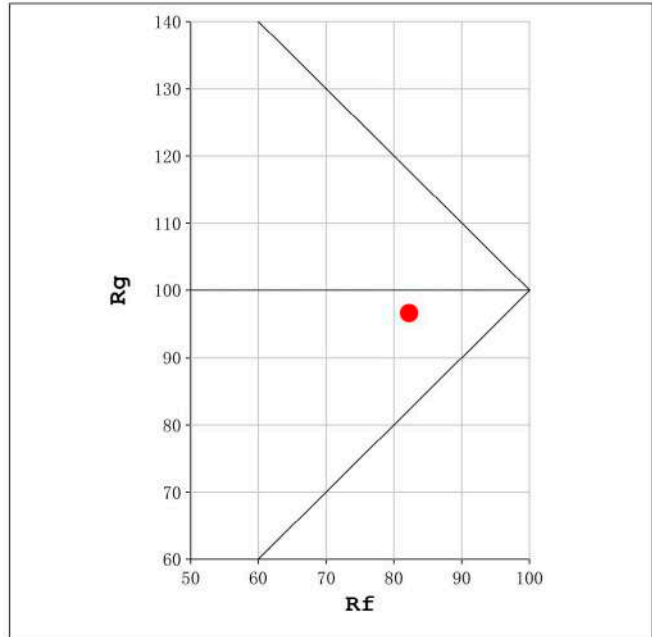
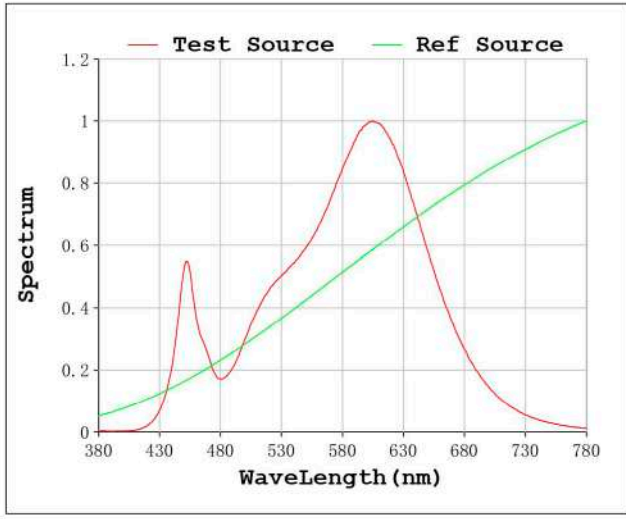
V = 11.998 V I = 0.5358 A P = 6.429 W PF = 1.000

Status: Integral T = 2000 ms Ip = 48442 (74%)

Model:Sideview 7 cálido  
 Tester:Sergio Carneros  
 Temperature:27Deg  
 Manufacturer:Luz Negra

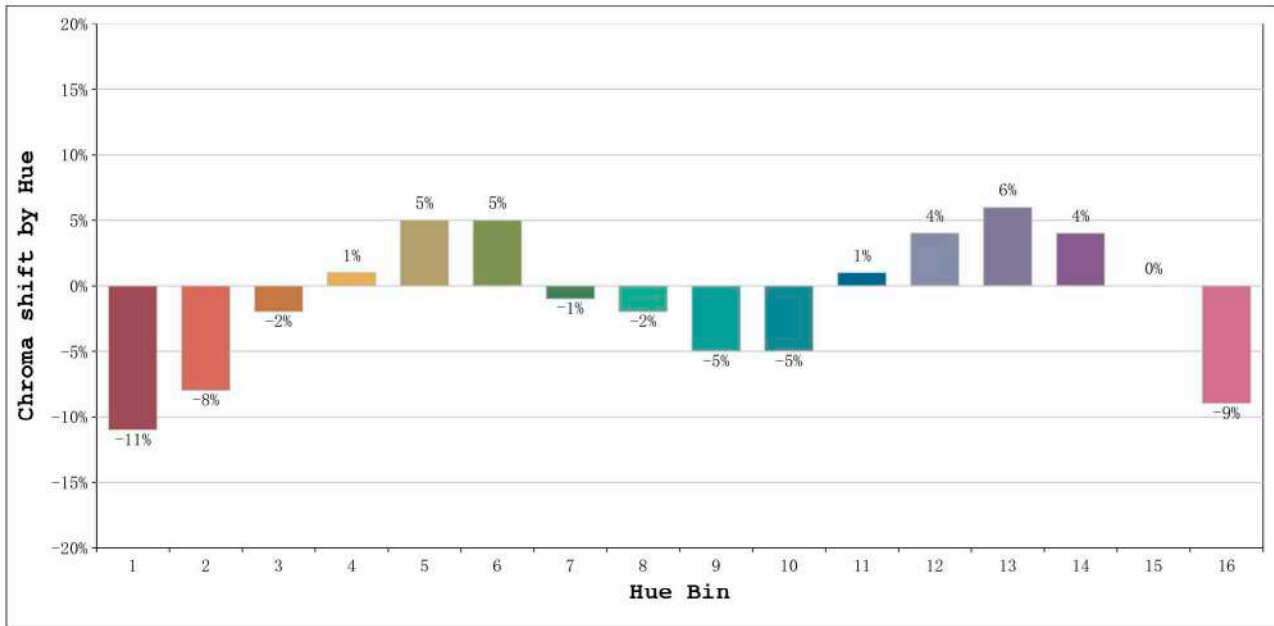
Number:37.021  
 Date:2020-07-29 07:15:09  
 Humidity:35%  
 Remarks:Led modul 50cm

Rf: 82      CCT: 2964 K      u': 0.2522  
Rg: 97      Duv: -0.0009      v': 0.5208



Model:Sideview 7 cálido  
Tester:Sergio Carneros  
Temperature:27Deg  
Manufacturer:Luz Negra

Number:37.021  
Date:2020-07-29 07:15:09  
Humidity:35%  
Remarks:Led modul 50cm



Hue Bin	Hue Angle	Rf	Graphic shift(%)	
			Chroma	Hue
1	0.0° - 22.5°	76	-11	0
2	22.5° - 45.0°	78	-8	7
3	45.0° - 67.5°	72	-2	12
4	67.5° - 90.0°	87	1	7
5	90.0° - 112.5°	91	5	4
6	112.5° - 135.0°	91	5	-1
7	135.0° - 157.5°	85	-1	-7
8	157.5° - 180.0°	91	-2	-2
9	180.0° - 202.5°	88	-5	1
10	202.5° - 225.0°	83	-5	8
11	225.0° - 247.5°	82	1	11
12	247.5° - 270.0°	83	4	6
13	270.0° - 292.5°	84	6	-10
14	292.5° - 315.0°	70	4	-16
15	315.0° - 337.5°	82	0	-11
16	337.5° - 360.0°	71	-9	-12

Model:Sideview 7 cálido  
 Tester:Sergio Carneros  
 Temperature:27Deg  
 Manufacturer:Luz Negra

Number:37.021  
 Date:2020-07-29 07:15:09  
 Humidity:35%  
 Remarks:Led modul 50cm