

## HIGH BRIGHTNESS

|             |         |
|-------------|---------|
| Ref: 33.198 | 6.000°K |
| Ref: 33.196 | 5.000°K |
| Ref: 33.001 | 4.000°K |
| Ref: 33.002 | 2.700°K |

High power "PRO" series flexible strip.

IP20 with 192 leds/metre 3040SMD.

It's essential to use an aluminium profile and heat transmitting tape for a correct dissipation.

### 10mm PCB

Daily recommended use: 10h

Maximum connection in open circuit: 3m

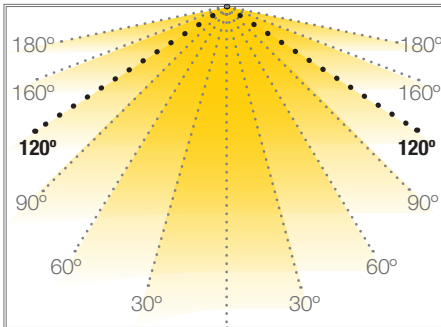
Maximum connection in closed circuit: 6m

Estimated lifespan: 30000h \*

\* Depending on the dissipation of the profile, the daily working hours and the external environmental working temperature

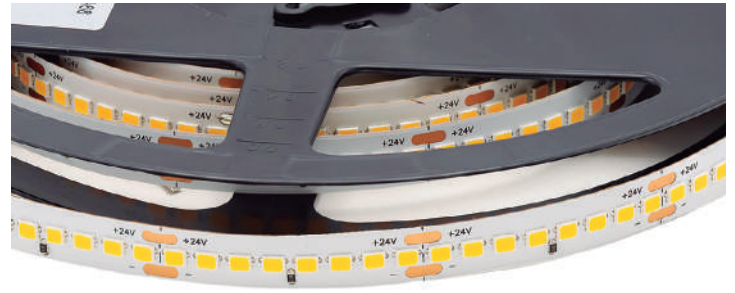
Recommended profiles:

Múnich mini, Múnich slim, Múnich magnum slim, Múnich, Múnich magnum, Sicilia, Liverpool, Gales slim, Gales, Gales con óptica, Gales con bandeja retranqueada, Gales con bandeja y celosía, Bruselas, Gales asimétrico, París XL, Moscú mini, Moscú slim, Moscú, Moscú magnum, krakovia slim, Moscú magnum Slim, krakovia, krakovia con óptica, krakovia con bandeja retranqueada, krakovia con bandeja y celosía, andorra, krakovia asimétrico.



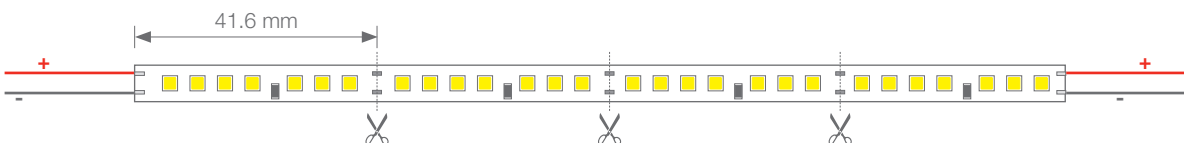
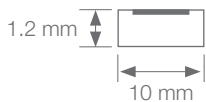
## CORDOBA

## FLEXIBLE STRIP

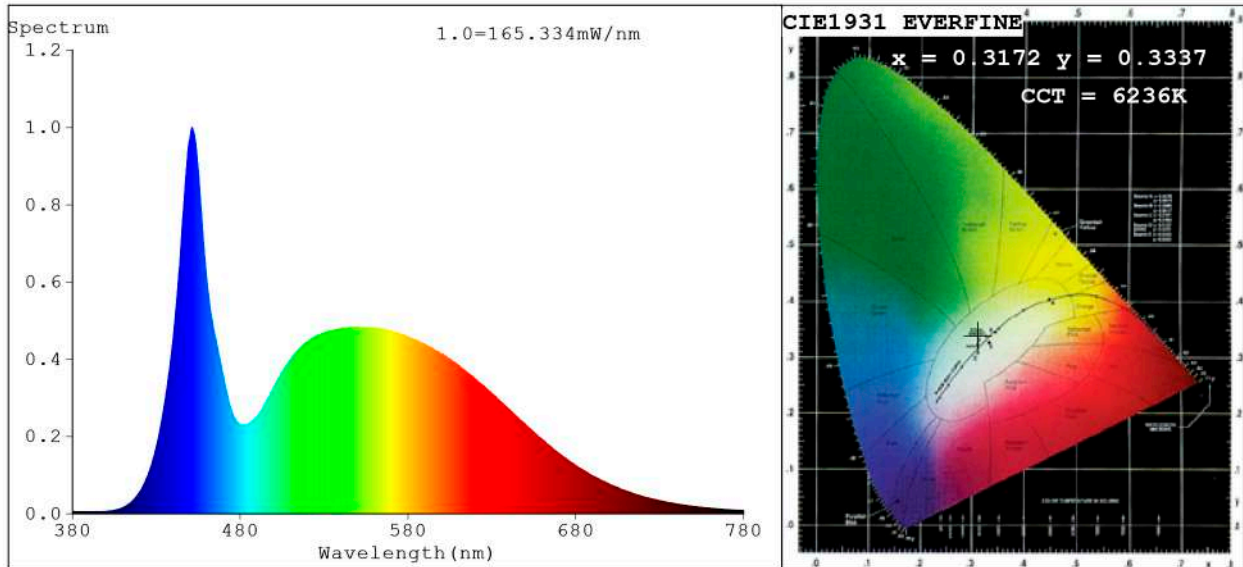


|                     |               |
|---------------------|---------------|
| Power (W)           | 40W/m         |
| Voltage (V)         | 24V           |
| Led type            | SMD3040       |
| Lumens (6.000°K)    | 5.169 Lm/m    |
| Lumens (5.000°K)    | 5.398 Lm/m    |
| Lumens (4.000°K)    | 5.322 Lm/m    |
| Lumens (2.700°K)    | 4.668 Lm/m    |
| CRI                 | >80           |
| Light emission      | 120°          |
| Waterproofing       | IP20          |
| N° leds/m           | 192           |
| Measurements        | 3000x10x1.2mm |
| Cutttable           | every 41.6mm  |
| PCB                 | 10mm          |
| Working temperature | -20°C / +45°C |
| Apt for             | indoor        |
| Packaging           | 1 roll/3m     |
| Guarantee           | 3 years       |

Aprobado por: 



**Spectrum Test Report**



**Color Parameters:**

Chromaticity Coordinate:  $x=0.3172$   $y=0.3337$  /  $u'=0.1992$   $v'=0.4715$   
 CCT=6236K (Duv=0.0034) Dominant WL:Ld =492.0nm Purity=5.4%  
 Ratio:R=13.9% G=80.7% B=5.3%; Peak WL:Lp=451.2nm FWHM=22.2nm  
 Render Index:Ra=84.6 CRI=78.1 TM30:Rf=83 Rg=96  
 R1 =83 R2 =88 R3 =89 R4 =85 R5 =84 R6 =82 R7 =90  
 R8 =76 R9 =25 R10=69 R11=84 R12=60 R13=84 R14=94 R15=80

**Photo Parameters:**

Flux = 5169 lm Eff. : 131.48 lm/W Fe = 17.16 W Scotopic:11357 S/P:2.197

**Electrical parameters:**

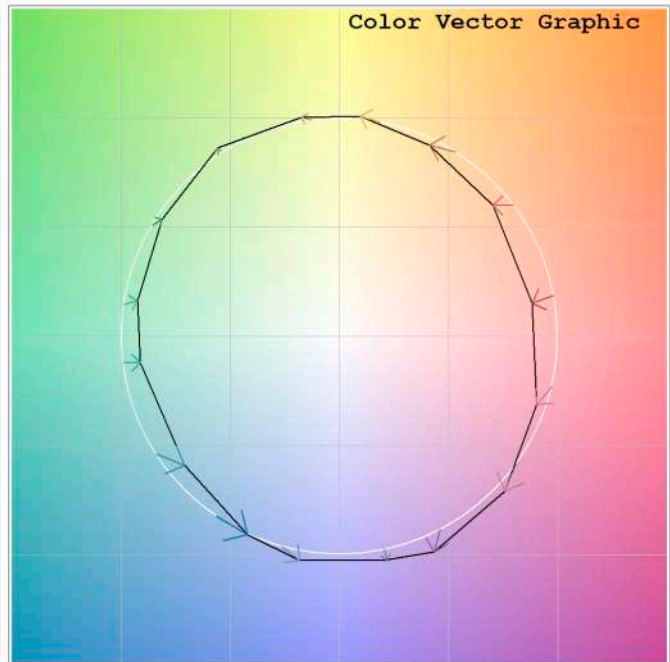
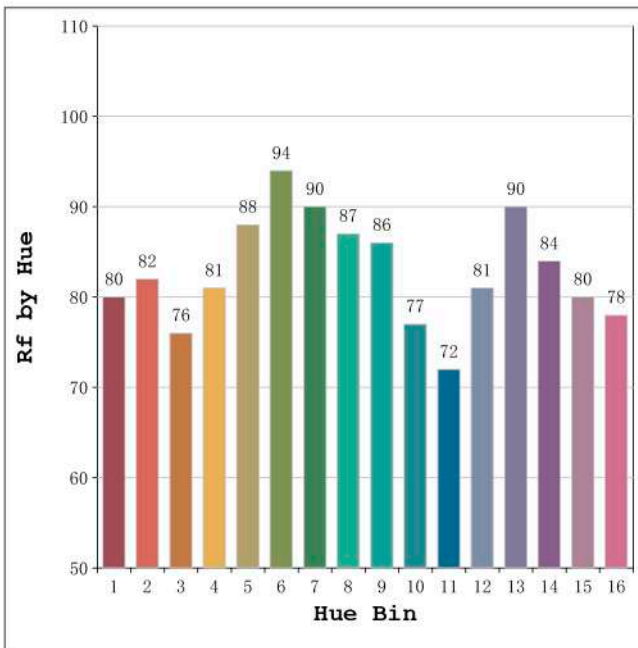
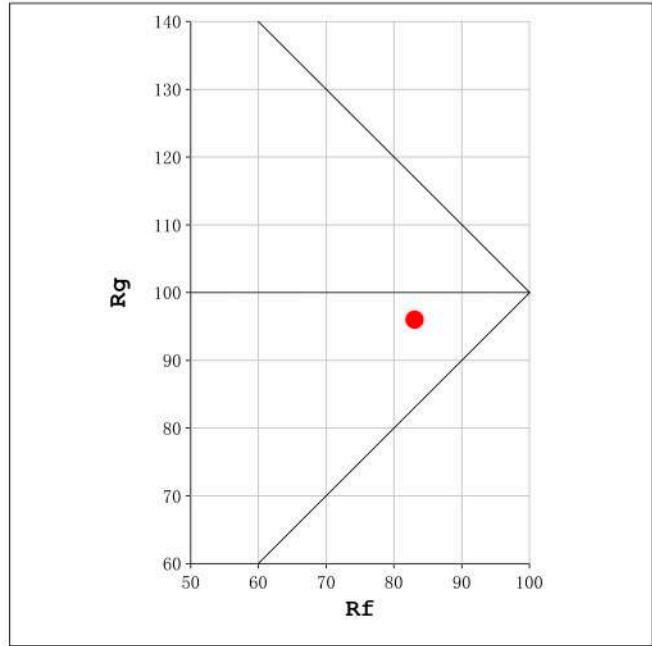
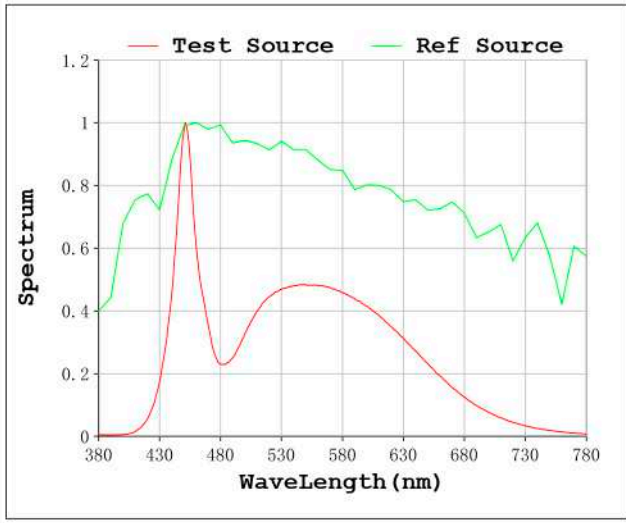
V = 24.198 V I = 1.625 A P = 39.32 W PF = 1.000

Status: Integral T = 219 ms Ip = 55939 (85%)

Model:Ecoled Córdoba 6000K  
 Tester:Sergio Carneros  
 Temperature:25Deg  
 Manufacturer:Luz Negra S.L

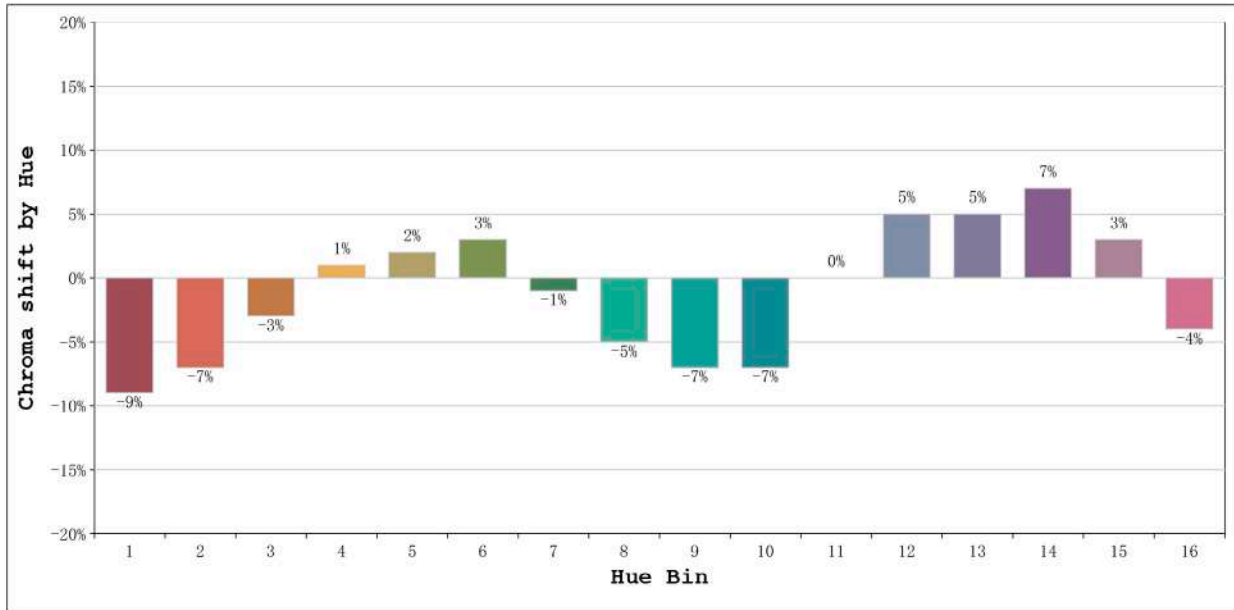
Number: 33.198  
 Date:2021-09-09 11:35:06  
 Humidity:57%  
 Remarks:100cm de tira flexible

Rf: 83      CCT: 6236 K      u': 0.1992  
Rg: 96      Duv: 0.0034      v': 0.4715



Model:Ecoled Córdoba 6000K  
Tester:Sergio Carneros  
Temperature:25Deg  
Manufacturer:Luz Negra S.L

Number: 33.198  
Date:2021-09-09 11:35:06  
Humidity:57%  
Remarks:100cm de tira flexible

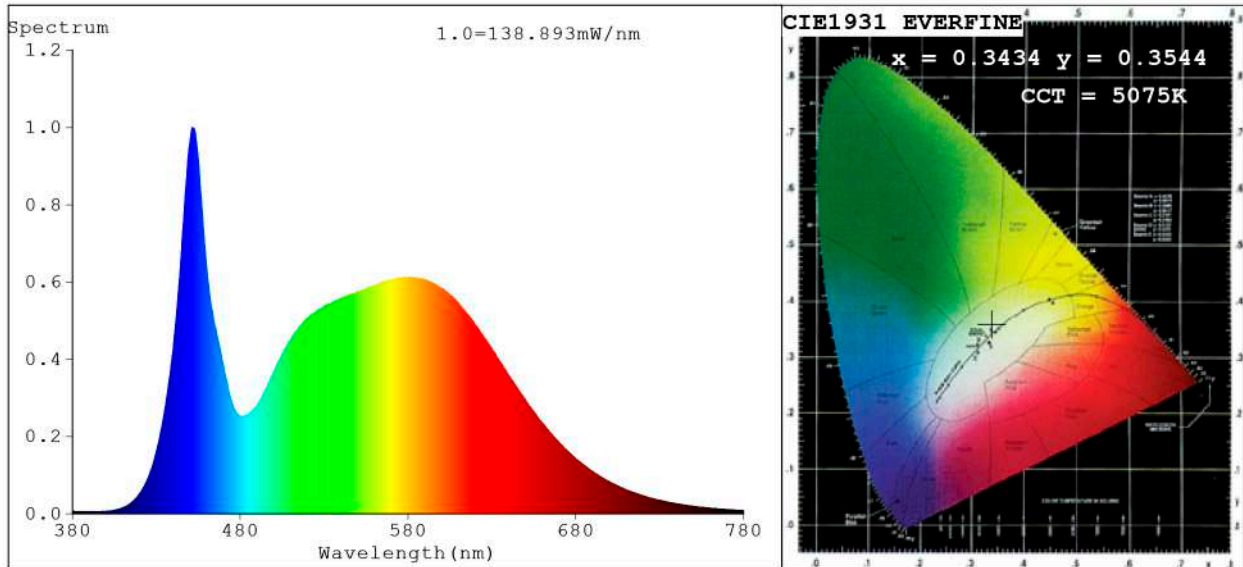


| Hue Bin | Hue Angle       | Rf | Graphic shift(%) |     |
|---------|-----------------|----|------------------|-----|
|         |                 |    | Chroma           | Hue |
| 1       | 0.0° - 22.5°    | 80 | -9               | -1  |
| 2       | 22.5° - 45.0°   | 82 | -7               | 5   |
| 3       | 45.0° - 67.5°   | 76 | -3               | 11  |
| 4       | 67.5° - 90.0°   | 81 | 1                | 9   |
| 5       | 90.0° - 112.5°  | 88 | 2                | 5   |
| 6       | 112.5° - 135.0° | 94 | 3                | -1  |
| 7       | 135.0° - 157.5° | 90 | -1               | -4  |
| 8       | 157.5° - 180.0° | 87 | -5               | -2  |
| 9       | 180.0° - 202.5° | 86 | -7               | 2   |
| 10      | 202.5° - 225.0° | 77 | -7               | 12  |
| 11      | 225.0° - 247.5° | 72 | 0                | 17  |
| 12      | 247.5° - 270.0° | 81 | 5                | 10  |
| 13      | 270.0° - 292.5° | 90 | 5                | 0   |
| 14      | 292.5° - 315.0° | 84 | 7                | -7  |
| 15      | 315.0° - 337.5° | 80 | 3                | -12 |
| 16      | 337.5° - 360.0° | 78 | -4               | -8  |

Model:Ecoled Córdoba 6000K  
Tester:Sergio Carneros  
Temperature:25Deg  
Manufacturer:Luz Negra S.L

Number: 33.198  
Date:2021-09-09 11:35:06  
Humidity:57%  
Remarks:100cm de tira flexible

**Spectrum Test Report**



**Color Parameters:**

Chromaticity Coordinate:  $x=0.3434$   $y=0.3544$   $u'=0.2092$   $v'=0.4858$   
 CCT=5075K (Duv=0.0021) Dominant WL:Ld =569.5nm Purity=9.4%  
 Ratio:R=15.6% G=79.8% B=4.6%; Peak WL:Lp=451.5nm FWHM=22.8nm  
 Render Index:Ra=83.3 CRI=76.6 TM30:Rf=82 Rg=95  
 R1 =82 R2 =88 R3 =92 R4 =83 R5 =82 R6 =84 R7 =87  
 R8 =68 R9 =11 R10=71 R11=82 R12=62 R13=83 R14=96 R15=77

**Photo Parameters:**

Flux = 5398 lm Eff. : 138.68 lm/W Fe = 17.00 W Scotopic:10635 S/P:1.9702

**Electrical parameters:**

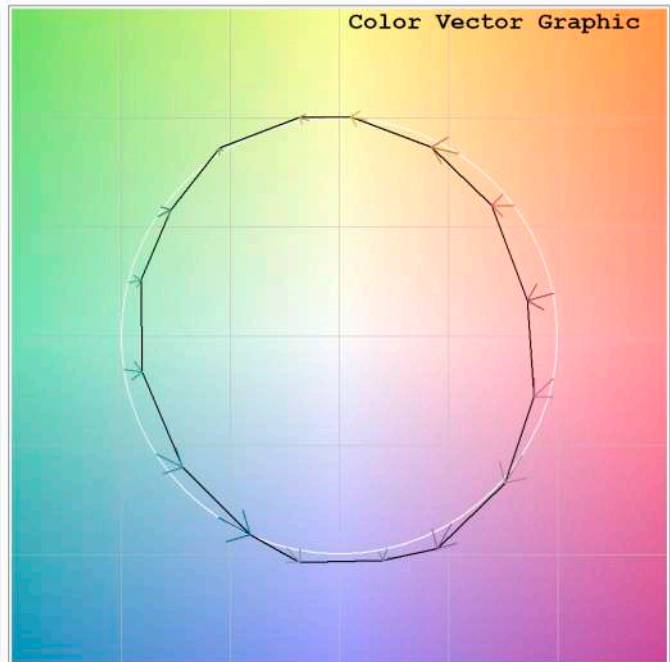
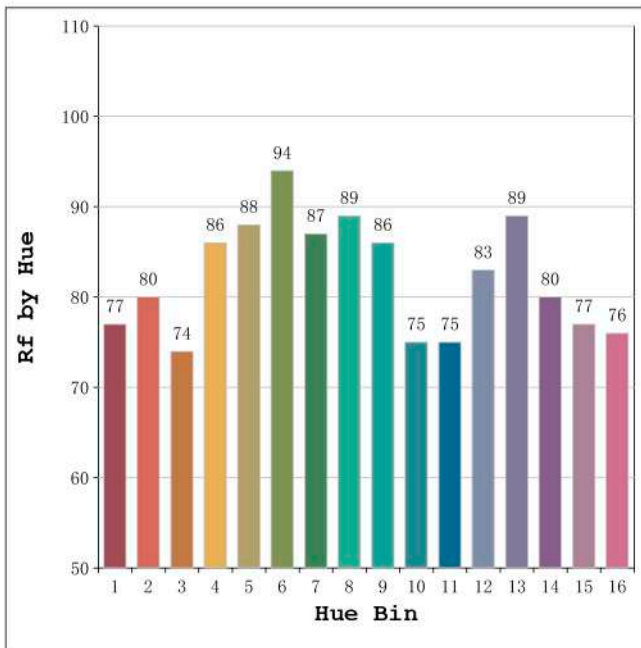
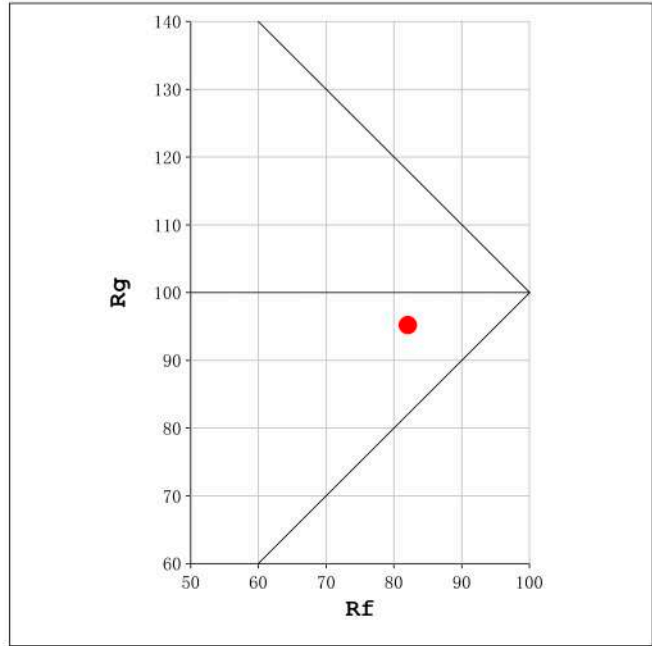
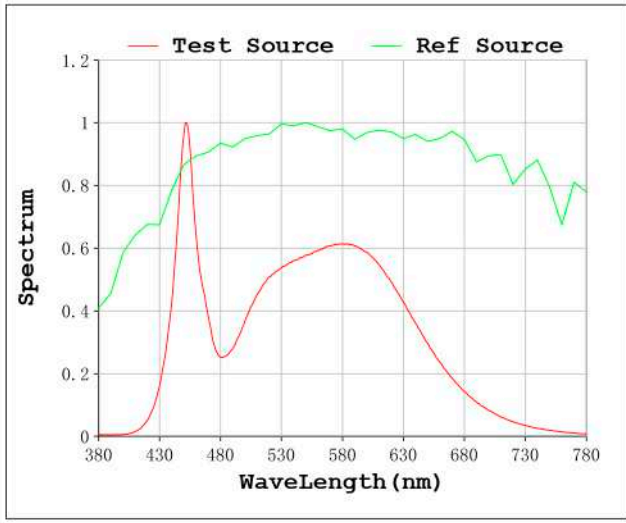
V = 24.198 V I = 1.609 A P = 38.92 W PF = 1.000

Status: Integral T = 219 ms Ip = 47663 (73%)

Model:Ecoled Córdoba 5000K  
 Tester:Sergio Carneros  
 Temperature:25Deg  
 Manufacturer:Luz Negra S.L

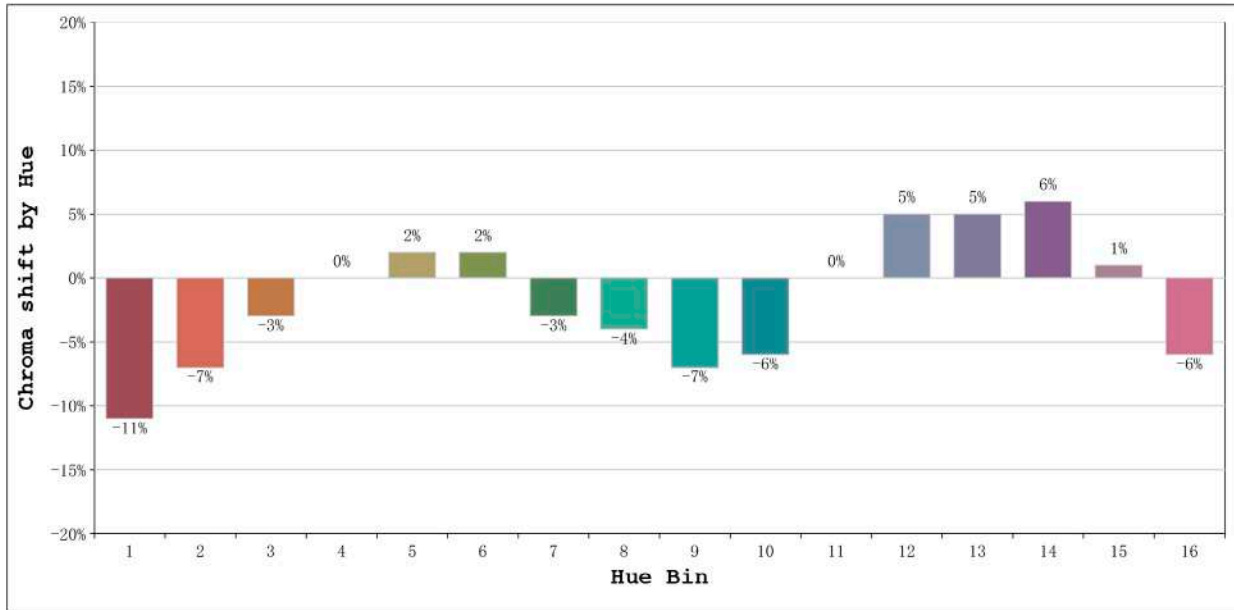
Number: 33.196  
 Date:2021-09-09 11:20:17  
 Humidity:57%  
 Remarks:100cm de tira flexible

Rf: 82      CCT: 5075 K      u': 0.2092  
Rg: 95      Duv: 0.0021      v': 0.4858



Model:Ecoled Córdoba 5000K  
Tester:Sergio Carneros  
Temperature:25Deg  
Manufacturer:Luz Negra S.L

Number: 33.196  
Date:2021-09-09 11:20:17  
Humidity:57%  
Remarks:100cm de tira flexible

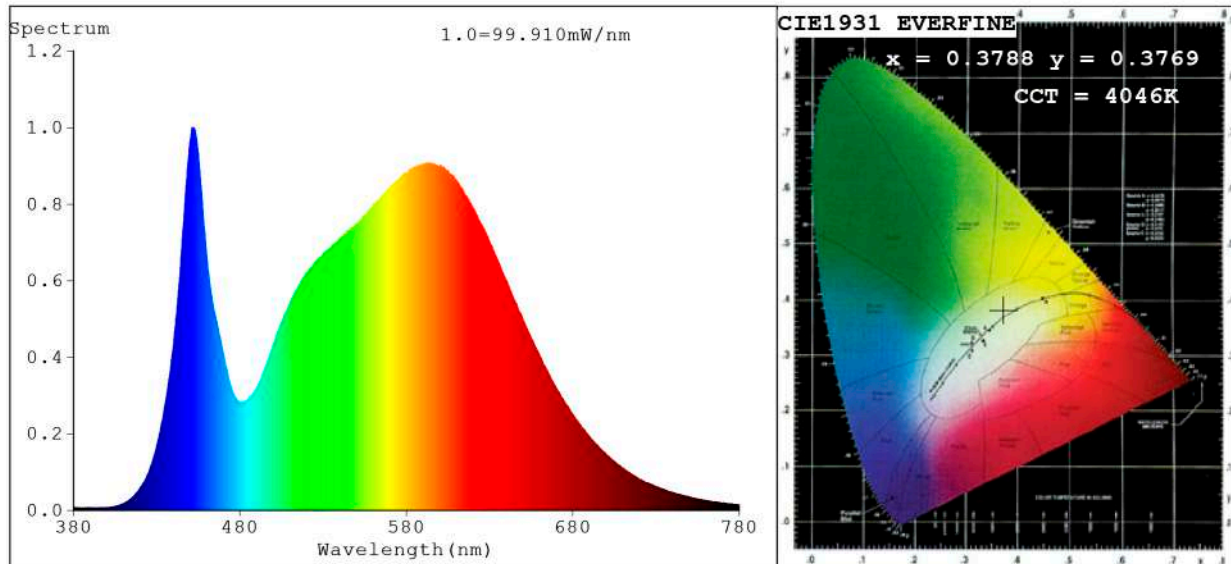


| Hue Bin | Hue Angle       | Rf | Graphic shift(%) |     |
|---------|-----------------|----|------------------|-----|
|         |                 |    | Chroma           | Hue |
| 1       | 0.0° - 22.5°    | 77 | -11              | 0   |
| 2       | 22.5° - 45.0°   | 80 | -7               | 6   |
| 3       | 45.0° - 67.5°   | 74 | -3               | 12  |
| 4       | 67.5° - 90.0°   | 86 | 0                | 8   |
| 5       | 90.0° - 112.5°  | 88 | 2                | 4   |
| 6       | 112.5° - 135.0° | 94 | 2                | -1  |
| 7       | 135.0° - 157.5° | 87 | -3               | -5  |
| 8       | 157.5° - 180.0° | 89 | -4               | -1  |
| 9       | 180.0° - 202.5° | 86 | -7               | 3   |
| 10      | 202.5° - 225.0° | 75 | -6               | 12  |
| 11      | 225.0° - 247.5° | 75 | 0                | 17  |
| 12      | 247.5° - 270.0° | 83 | 5                | 7   |
| 13      | 270.0° - 292.5° | 89 | 5                | -2  |
| 14      | 292.5° - 315.0° | 80 | 6                | -11 |
| 15      | 315.0° - 337.5° | 77 | 1                | -14 |
| 16      | 337.5° - 360.0° | 76 | -6               | -9  |

Model:Ecoled Córdoba 5000K  
 Tester:Sergio Carneros  
 Temperature:25Deg  
 Manufacturer:Luz Negra S.L

Number: 33.196  
 Date:2021-09-09 11:20:17  
 Humidity:57%  
 Remarks:100cm de tira flexible

**Spectrum Test Report**



**Color Parameters:**

Chromaticity Coordinate:  $x=0.3788$   $y=0.3769$   $u'=0.2240$   $v'=0.5014$   
 CCT=4046K (Duv=0.0006) Dominant WL:Ld =578.6nm Purity=26.8%  
 Ratio:R=18.2% G=78.1% B=3.7%; Peak WL:Lp=451.2nm FWHM=24.1nm  
 Render Index:Ra=83.7 CRI=77.4 TM30:Rf=83 Rg=96  
 R1 =82 R2 =89 R3 =94 R4 =83 R5 =82 R6 =85 R7 =87  
 R8 =67 R9 =15 R10=74 R11=81 R12=62 R13=84 R14=97 R15=77

**Photo Parameters:**

Flux = 5322 lm Eff. : 137.80 lm/W Fe = 16.49 W Scotopic:9064.1 S/P:1.7031

**Electrical parameters:**

V = 24.198 V I = 1.596 A P = 38.62 W PF = 1.000

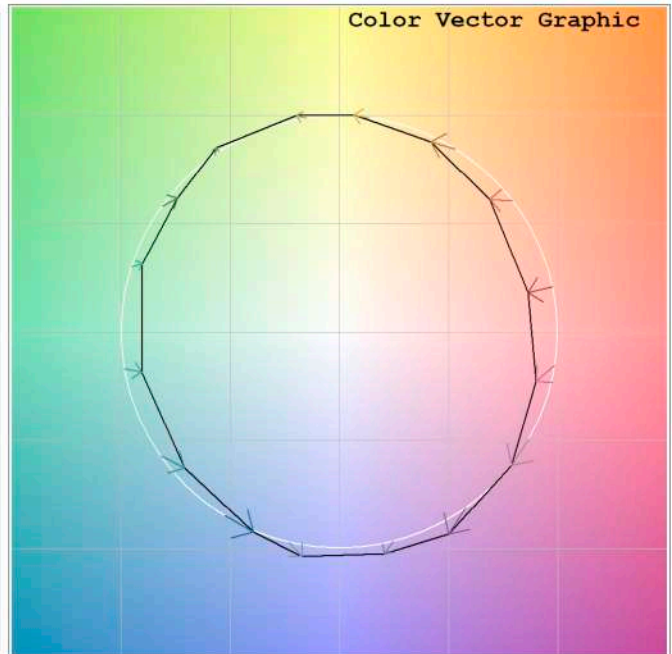
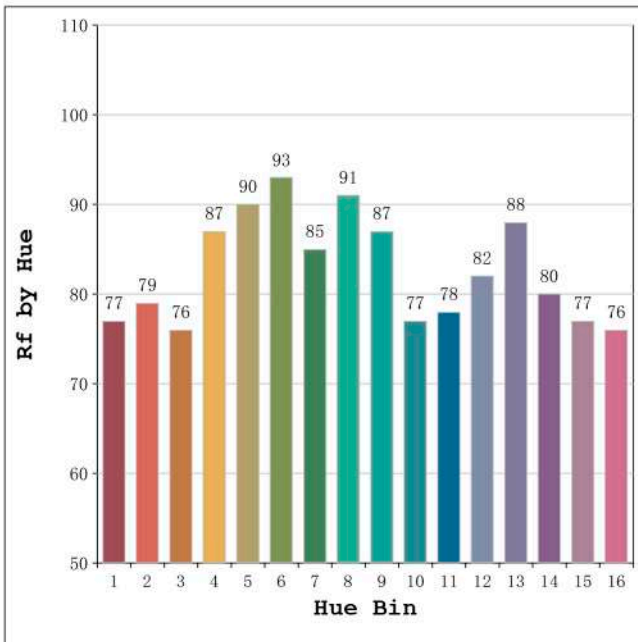
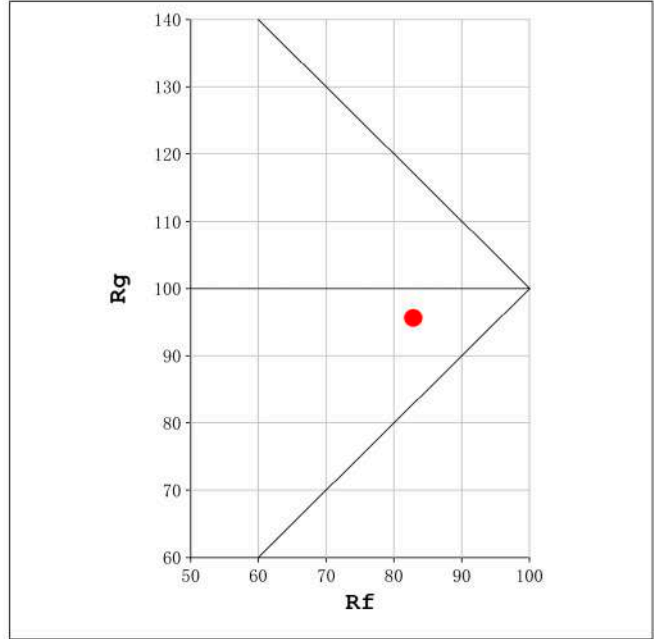
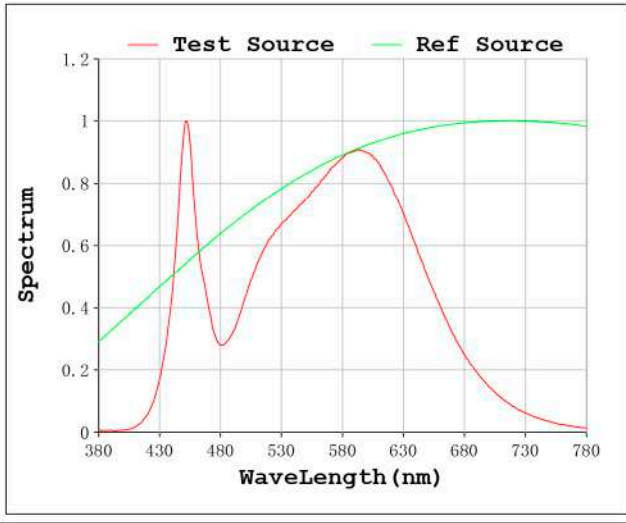
Status: Integral T = 219 ms Ip = 43060 (66%)

Model:Ecoled Córdoba 4000K  
 Tester:Sergio Carneros  
 Temperature:25Deg  
 Manufacturer:Luz Negra S.L

Number: 33.001  
 Date:2021-09-09 10:59:44  
 Humidity:57%  
 Remarks:100cm de tira flexible

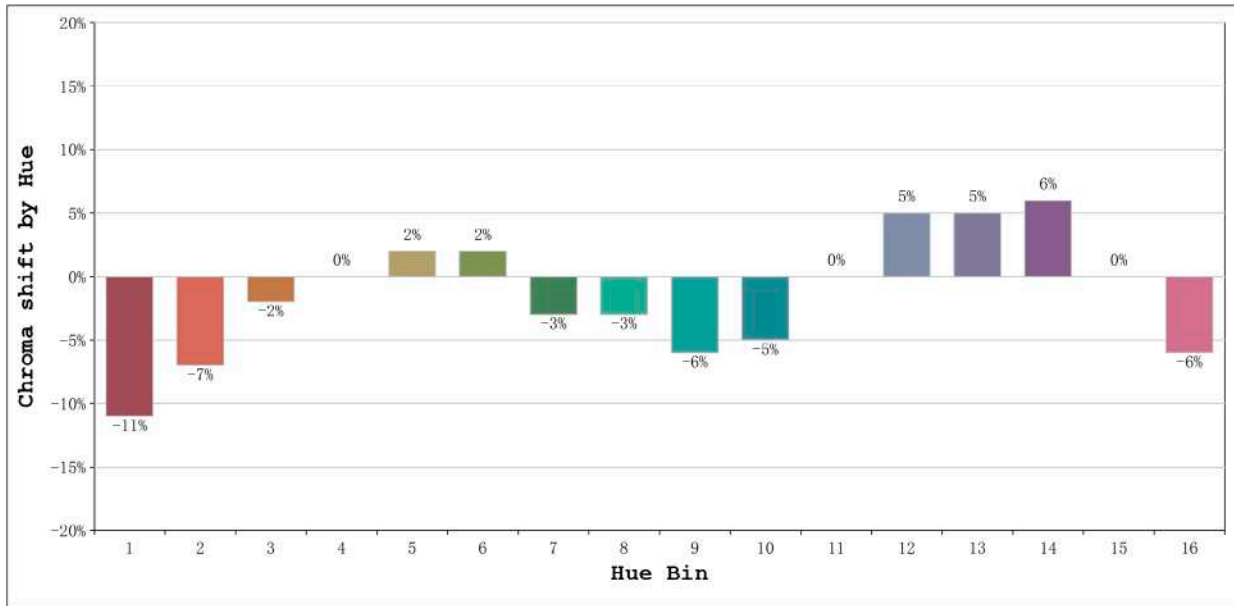


Rf: 83      CCT: 4046 K      u': 0.2240  
Rg: 96      Duv: 0.0006      v': 0.5014



Model:Ecoled Córdoba 4000K  
Tester:Sergio Careros  
Temperature:25Deg  
Manufacturer:Luz Negra S.L

Number: 33.001  
Date:2021-09-09 10:59:44  
Humidity:57%  
Remarks:100cm de tira flexible

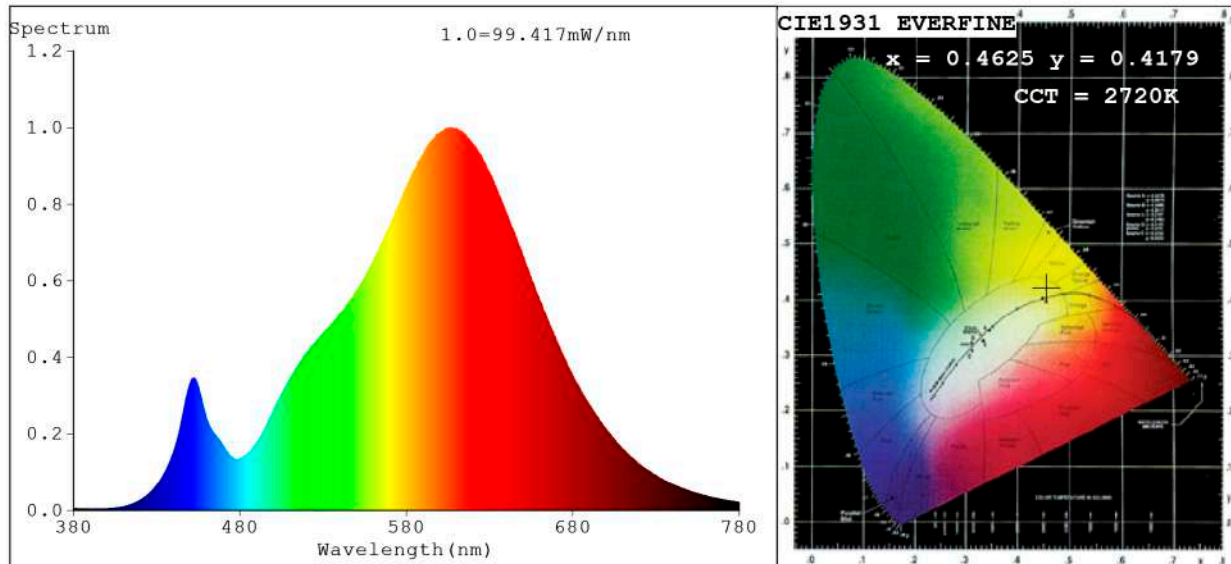


| Hue Bin | Hue Angle       | Rf | Graphic shift(%) |     |
|---------|-----------------|----|------------------|-----|
|         |                 |    | Chroma           | Hue |
| 1       | 0.0° - 22.5°    | 77 | -11              | 0   |
| 2       | 22.5° - 45.0°   | 79 | -7               | 6   |
| 3       | 45.0° - 67.5°   | 76 | -2               | 11  |
| 4       | 67.5° - 90.0°   | 87 | 0                | 7   |
| 5       | 90.0° - 112.5°  | 90 | 2                | 4   |
| 6       | 112.5° - 135.0° | 93 | 2                | -1  |
| 7       | 135.0° - 157.5° | 85 | -3               | -6  |
| 8       | 157.5° - 180.0° | 91 | -3               | -1  |
| 9       | 180.0° - 202.5° | 87 | -6               | 3   |
| 10      | 202.5° - 225.0° | 77 | -5               | 10  |
| 11      | 225.0° - 247.5° | 78 | 0                | 15  |
| 12      | 247.5° - 270.0° | 82 | 5                | 7   |
| 13      | 270.0° - 292.5° | 88 | 5                | -4  |
| 14      | 292.5° - 315.0° | 80 | 6                | -12 |
| 15      | 315.0° - 337.5° | 77 | 0                | -14 |
| 16      | 337.5° - 360.0° | 76 | -6               | -8  |

Model:Ecoled Córdoba 4000K  
Tester:Sergio Carneros  
Temperature:25Deg  
Manufacturer:Luz Negra S.L

Number: 33.001  
Date:2021-09-09 10:59:44  
Humidity:57%  
Remarks:100cm de tira flexible

**Spectrum Test Report**



**Color Parameters:**

Chromaticity Coordinate: $x=0.4625$   $y=0.4179$ / $u'=0.2609$   $v'=0.5305$   
 CCT=2720K(Duv=0.0024) Dominant WL:Ld =583.3nm Purity=64.3%  
 Ratio:R=24.7% G=73.4% B=1.9%; Peak WL:Lp=606.5nm FWHM=126.9nm  
 Render Index:Ra=82.2 CRI=76.6 TM30:Rf=83 Rg=95  
 R1 =80 R2 =89 R3 =98 R4 =80 R5 =80 R6 =87 R7 =84  
 R8 =60 R9 =10 R10=76 R11=79 R12=69 R13=82 R14=99 R15=73

**Photo Parameters:**

Flux = 4668 lm Eff. : 125.34 lm/W Fe = 14.60 W Scotopic:5537.9 S/P:1.1864

**Electrical parameters:**

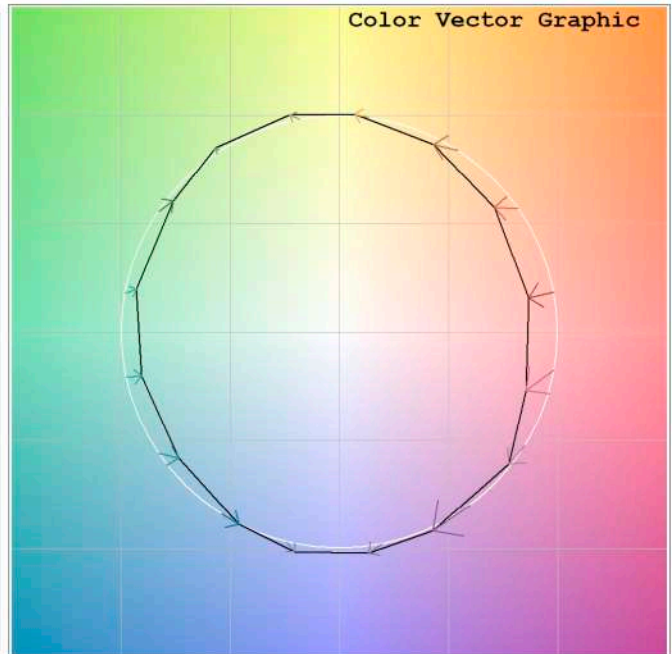
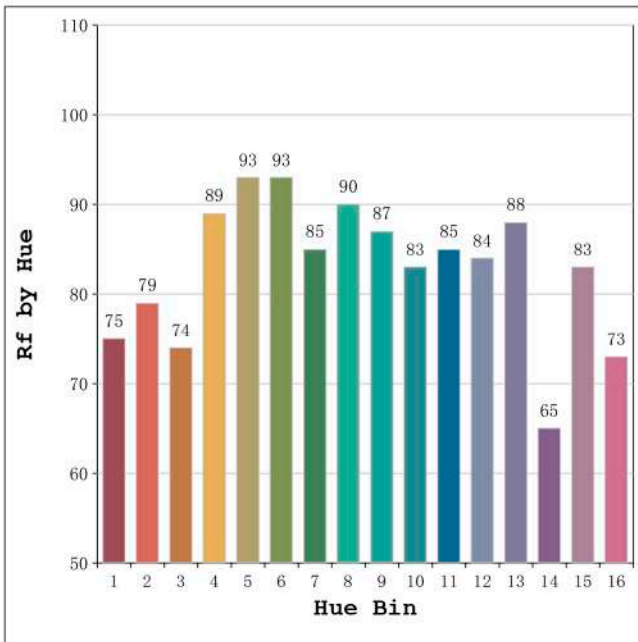
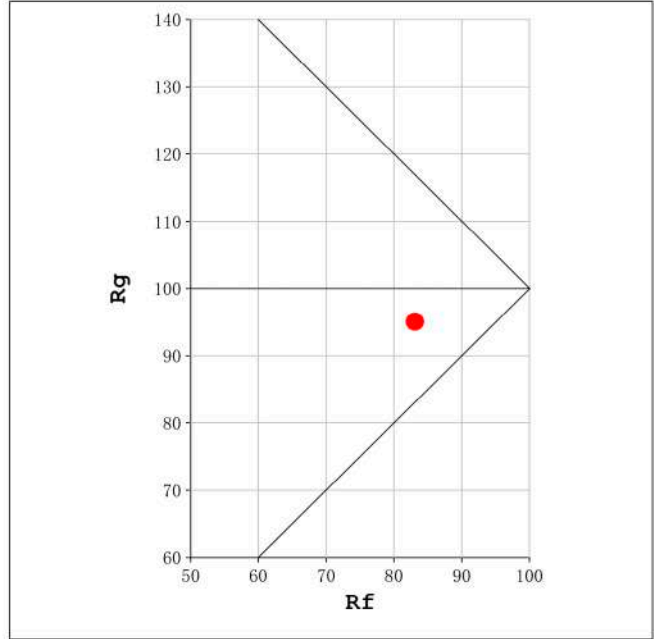
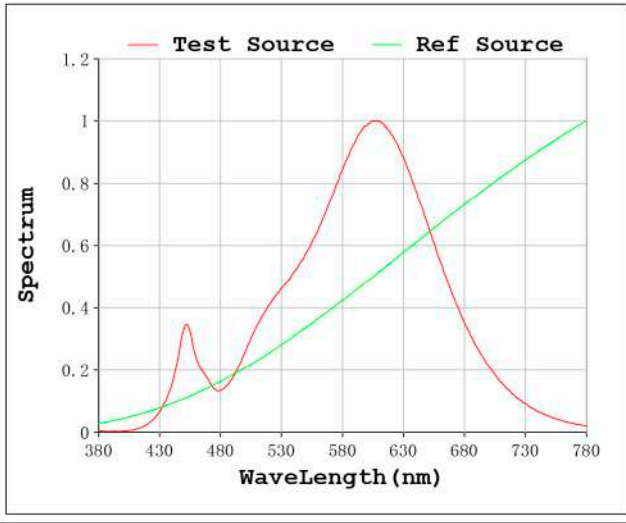
V = 24.198 V I = 1.539 A P = 37.24 W PF = 1.000

Status: Integral T = 219 ms Ip = 45844 (70%)

Model:Ecoled Córdoba 2700K  
 Tester:Sergio Carneros  
 Temperature:25Deg  
 Manufacturer:Luz Negra S.L

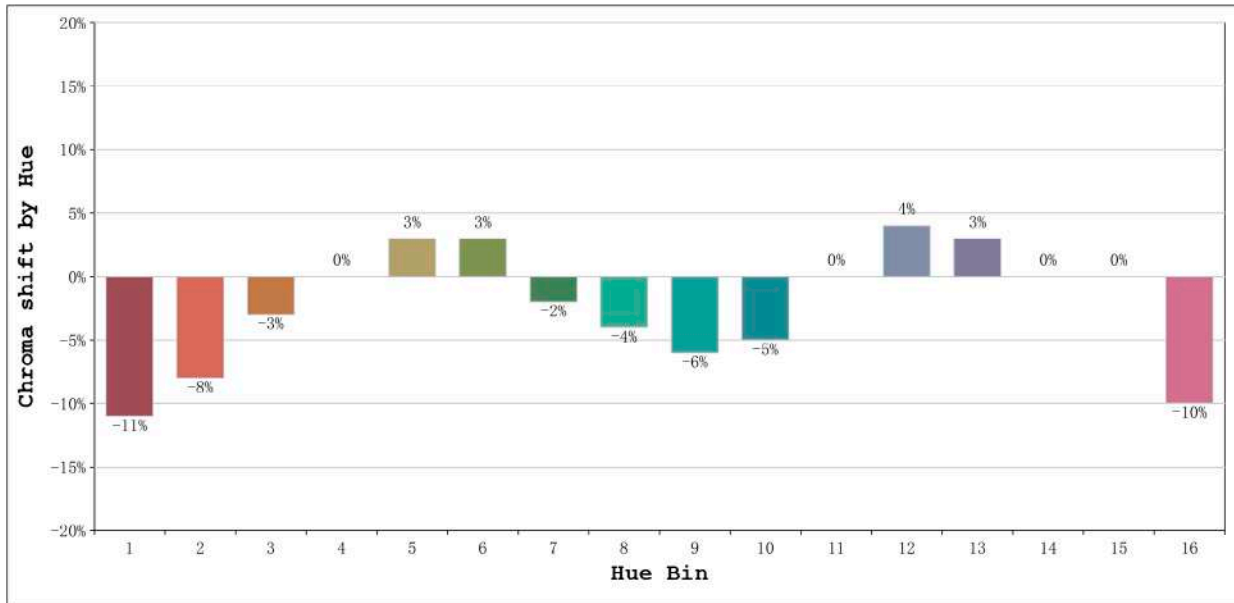
Number: 33.002  
 Date:2021-09-09 11:13:04  
 Humidity:57%  
 Remarks:100cm de tira flexible

Rf: 83      CCT: 2720 K      u': 0.2609  
Rg: 95      Duv: 0.0024      v': 0.5305



Model:Ecoled Córdoba 2700K  
Tester:Sergio Careros  
Temperature:25Deg  
Manufacturer:Luz Negra S.L

Number: 33.002  
Date:2021-09-09 11:13:04  
Humidity:57%  
Remarks:100cm de tira flexible



| Hue Bin | Hue Angle       | Rf | Graphic shift (%) |     |
|---------|-----------------|----|-------------------|-----|
|         |                 |    | Chroma            | Hue |
| 1       | 0.0° - 22.5°    | 75 | -11               | 0   |
| 2       | 22.5° - 45.0°   | 79 | -8                | 7   |
| 3       | 45.0° - 67.5°   | 74 | -3                | 11  |
| 4       | 67.5° - 90.0°   | 89 | 0                 | 7   |
| 5       | 90.0° - 112.5°  | 93 | 3                 | 4   |
| 6       | 112.5° - 135.0° | 93 | 3                 | 0   |
| 7       | 135.0° - 157.5° | 85 | -2                | -7  |
| 8       | 157.5° - 180.0° | 90 | -4                | -2  |
| 9       | 180.0° - 202.5° | 87 | -6                | 1   |
| 10      | 202.5° - 225.0° | 83 | -5                | 7   |
| 11      | 225.0° - 247.5° | 85 | 0                 | 9   |
| 12      | 247.5° - 270.0° | 84 | 4                 | 4   |
| 13      | 270.0° - 292.5° | 88 | 3                 | -6  |
| 14      | 292.5° - 315.0° | 65 | 0                 | -20 |
| 15      | 315.0° - 337.5° | 83 | 0                 | -10 |
| 16      | 337.5° - 360.0° | 73 | -10               | -11 |

Model:Ecoled Córdoba 2700K  
 Tester:Sergio Carneros  
 Temperature:25Deg  
 Manufacturer:Luz Negra S.L

Number: 33.002  
 Date:2021-09-09 11:13:04  
 Humidity:57%  
 Remarks:100cm de tira flexible