

**OPTIC 2 PREMIUM**

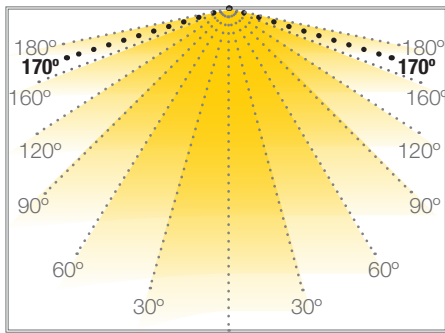
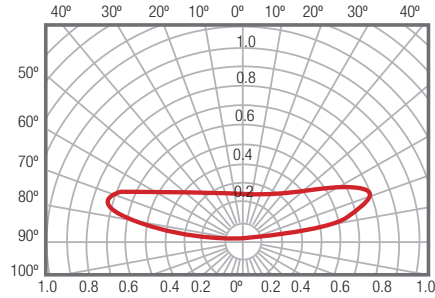
**MODULOS LEDS**

Ref: 43.002

6500°K

Se fija con cinta adhesiva.

Cadena de 20 unidades.

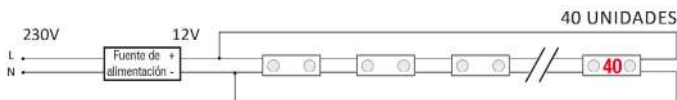


<b>W</b> 0.72		<b>12V</b>		<b>20h</b> máx.
potencia	170°	voltaje	IP67	trabajo

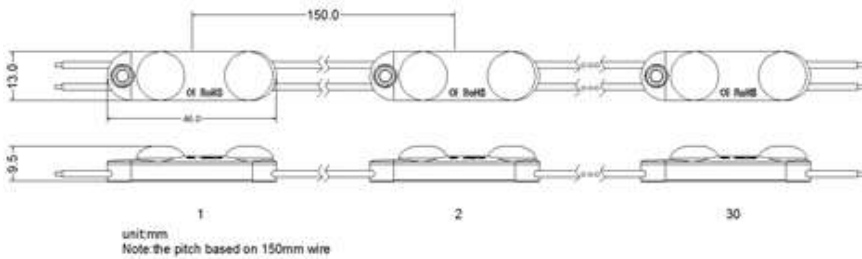
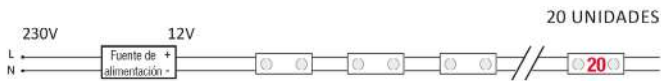
Potencia (W)	0.72W
Voltaje (V)	12V
Tipo Led	11V2835
Lumens (6500°K)	100 Lm
Regulación	si, mediante dimmer
Emisión de luz	170°
Estanqueidad (IP)	IP67
Medidas	45x13x9.5mm
Temperatura trabajo	-25°C / +55°C
Fijación	cinta adhesiva
Embalaje	20 und
Garantía	5 años

Aprobado por:

**NUMERO MAXIMO DE MODULOS conectados con CIRCUITO CERRADO**



**NÚMERO MÁXIMO DE MÓDULOS conectados con CIRCUITO ABIERTO**

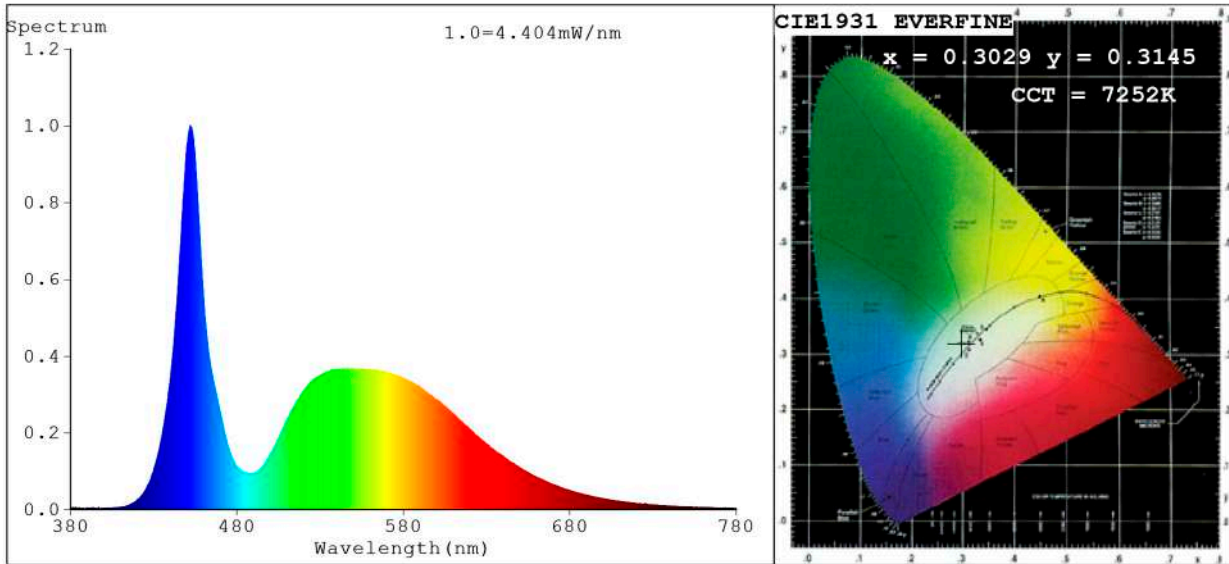


**BARCELONA**  
C/ Carles Buigues, 13  
08420 Canovelles  
Info@luznegra.net  
Tel: +34 938 402 598

**MADRID**  
C/ Adaptación, 27  
28906 Getafe  
centro@luznegra.net  
Tel: +34 916 416 081

**PARIS**  
113 Avenue Joffre  
77450 Esbly  
france@luznegra.net  
Tel: +33 (0) 160 426 585

**Spectrum Test Report**



**Color Parameters:**

Chromaticity Coordinate:  $x=0.3029$   $y=0.3145$  /  $u'=0.1965$   $v'=0.4589$   
 CCT=7252K (Duv=0.0008) Dominant WL:  $L_d = 483.3$ nm Purity=11.9%  
 Ratio: R=12.0% G=83.3% B=4.7% ; Peak WL:  $L_p = 451.9$ nm FWHM=17.6nm  
 Render Index:  $R_a = 75.5$  CRI=66.2 TM30:  $R_f = 72$   $R_g = 92$   
 R1 =74 R2 =80 R3 =80 R4 =76 R5 =74 R6 =70 R7 =85  
 R8 =65 R9 =0 R10=48 R11=73 R12=39 R13=75 R14=88 R15=71

**Photo Parameters:**

Flux = 97.35 lm Eff. : 6.93 lm/W  $F_e = 311.2$  mW Scotopic:212.82 S/P:2.1862

**Electrical parameters:**

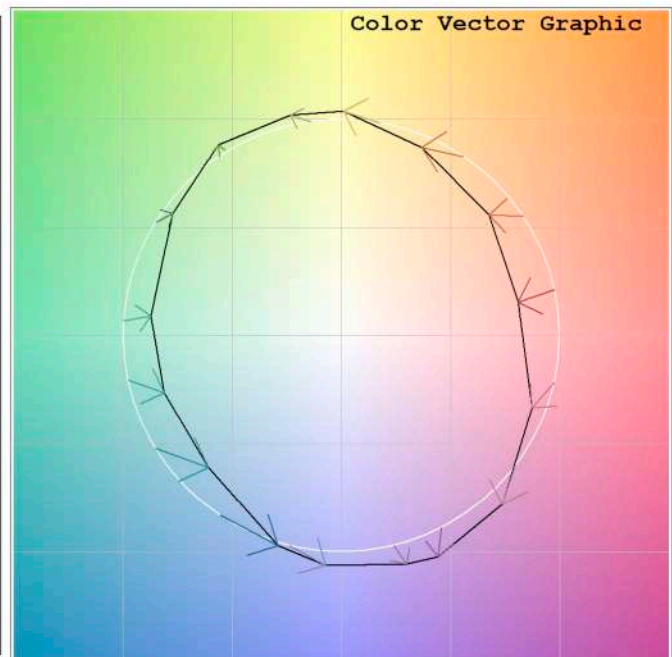
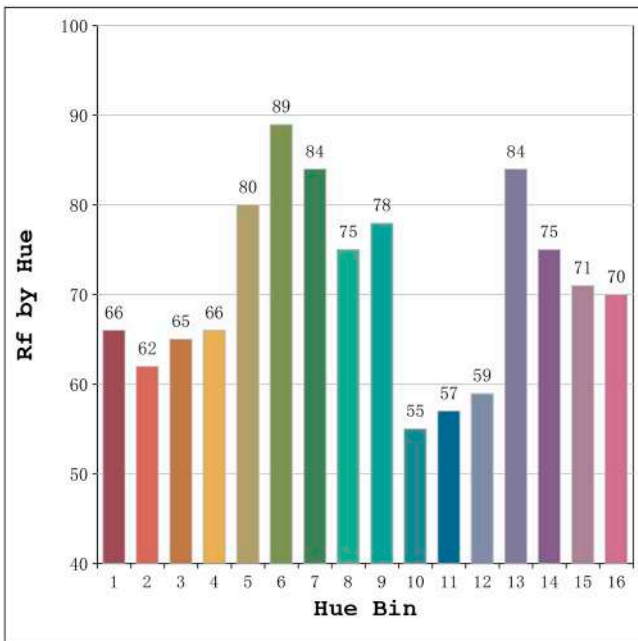
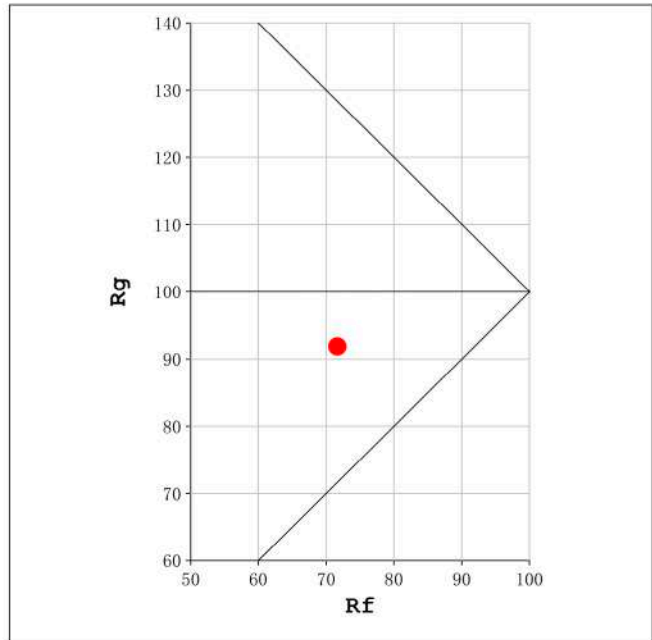
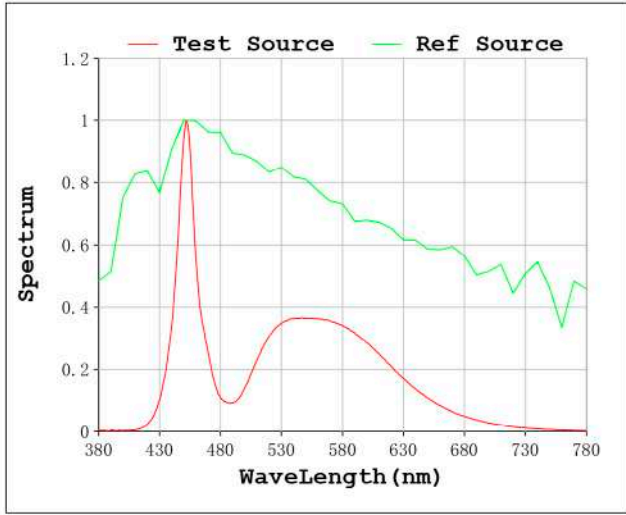
V = 11.998 V I = 1.172 A P = 14.06 W PF = 1.000

Status: Integral T = 5000 ms  $I_p = 31197$  (48%)

Model:Ecoled optic 2 premium  
 Tester:Sergio Carneros  
 Temperature:20Deg  
 Manufacturer:Luz Negra

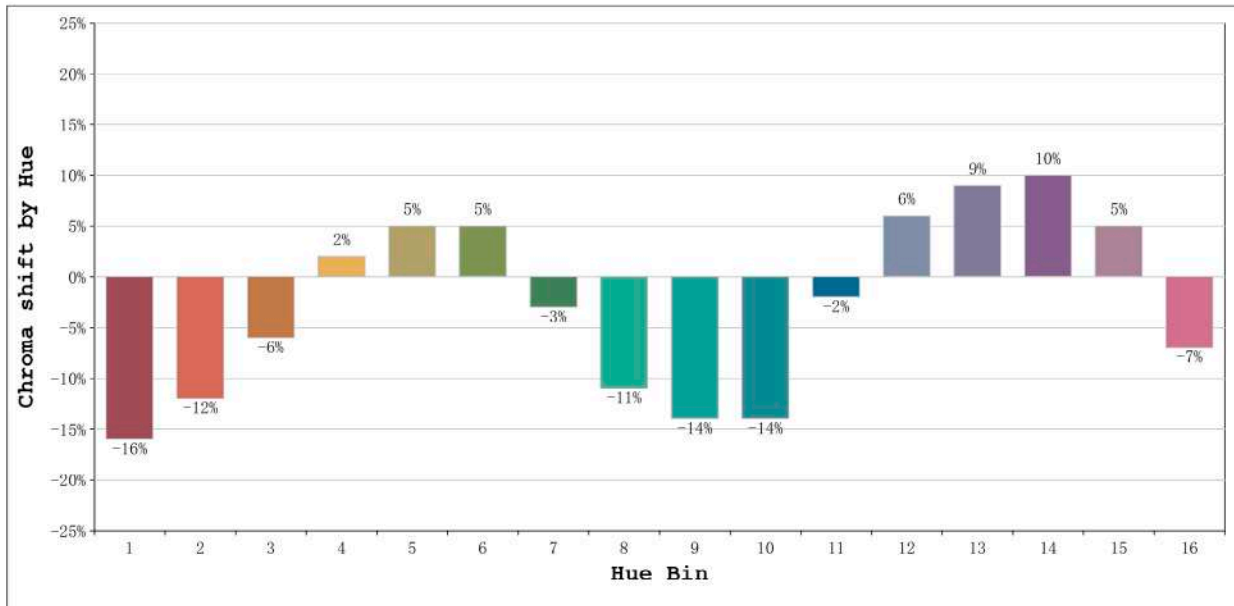
Number: 43.002  
 Date:2022-04-27 08:40:10  
 Humidity:50%  
 Remarks:20 modulos led

Rf: 72      CCT: 7252 K      u': 0.1965  
Rg: 92      Duv: 0.0008      v': 0.4589



Model:Ecoled optic 2 premium  
Tester:Sergio Carneros  
Temperature:20Deg  
Manufacturer:Luz Negra

Number: 43.002  
Date:2022-04-27 08:40:10  
Humidity:50%  
Remarks:20 modulos led



Hue Bin	Hue Angle	Rf	Graphic shift(%)	
			Chroma	Hue
1	0.0° - 22.5°	66	-16	-1
2	22.5° - 45.0°	62	-12	9
3	45.0° - 67.5°	65	-6	19
4	67.5° - 90.0°	66	2	17
5	90.0° - 112.5°	80	5	8
6	112.5° - 135.0°	89	5	-1
7	135.0° - 157.5°	84	-3	-7
8	157.5° - 180.0°	75	-11	-4
9	180.0° - 202.5°	78	-14	9
10	202.5° - 225.0°	55	-14	21
11	225.0° - 247.5°	57	-2	30
12	247.5° - 270.0°	59	6	18
13	270.0° - 292.5°	84	9	4
14	292.5° - 315.0°	75	10	-8
15	315.0° - 337.5°	71	5	-17
16	337.5° - 360.0°	70	-7	-13

Model:Ecoled optic 2 premium  
Tester:Sergio Carneros  
Temperature:20Deg  
Manufacturer:Luz Negra

Number: 43.002  
Date:2022-04-27 08:40:10  
Humidity:50%  
Remarks:20 modulos led