

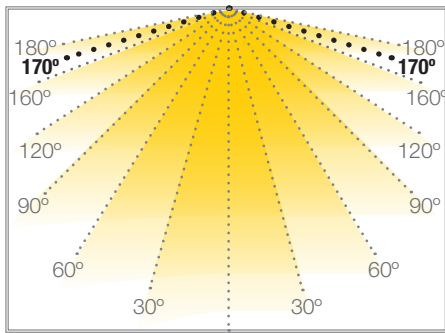
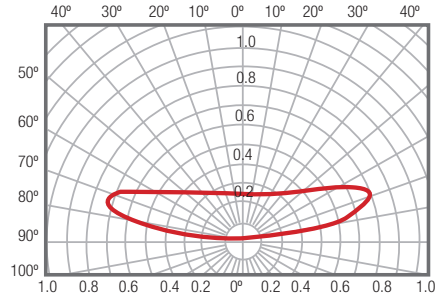
OPTIC 2 PREMIUM

LEDS MODULES

Ref: 43.002

6500°K

Fixed with adhesive tape.
Strip with 20 units.



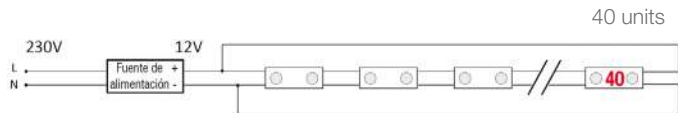
W 0.72		12V		20h máx.
power	170°	voltage	IP67	work

Power (W)	0.72W
Voltage (V)	12V
Led type	11V2835
Lumens (6500°K)	100 Lm
Regulation	yes, via dimmer
Light emission	170°
Waterproofing	IP67
Measurements	45x13x9.5mm
Working temperature	-25°C / +55°C
Fixing	adhesive tape
Packaging	bag of 20 units
Guarantee	5 years

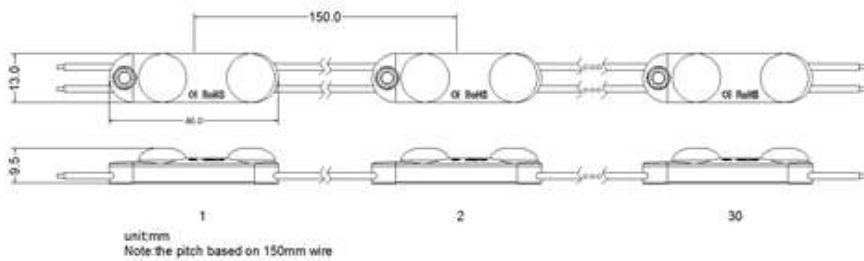
Aprobado por:

Aprobado por:

MAXIMUM NUMBER OF MODULES which can be connected with a CLOSED CIRCUIT



MAXIMUM NUMBER OF MODULES which can be connected with an OPEN CIRCUIT

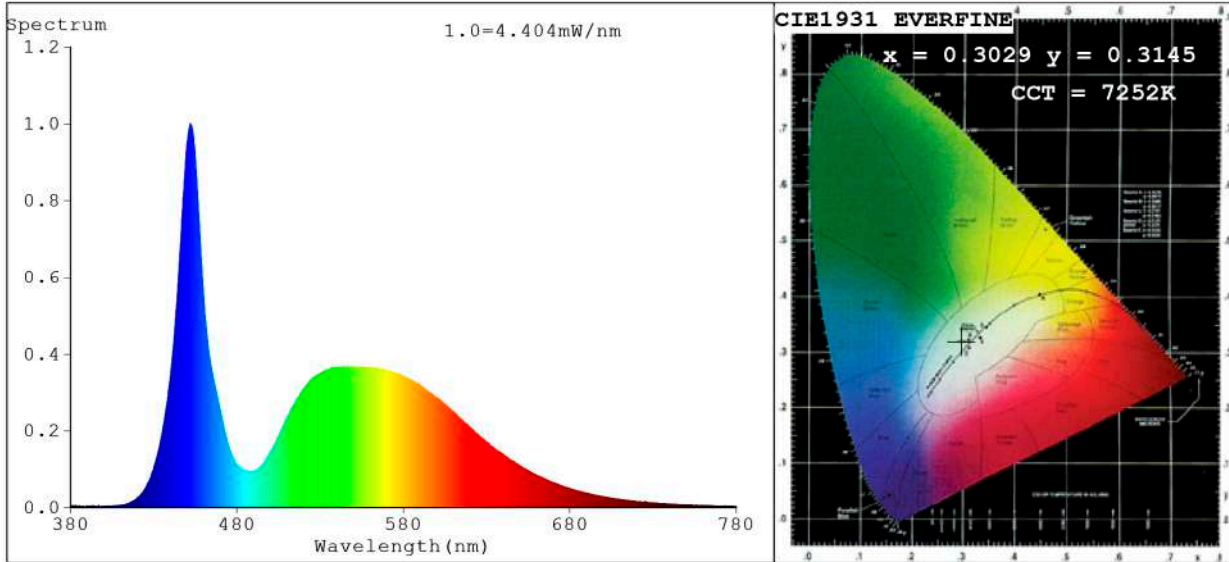


BARCELONA
C/ Carles Buigues, 13
08420 Canovelles
Info@luznegra.net
Tel: +34 938 402 598

MADRID
C/ Adaptación, 27
28906 Getafe
centro@luznegra.net
Tel: +34 916 416 081

PARIS
113 Avenue Joffre
77450 Esbly
france@luznegra.net
Tel: +33 (0) 160 426 585

Spectrum Test Report



Color Parameters:

Chromaticity Coordinate: $x=0.3029$ $y=0.3145$ / $u'=0.1965$ $v'=0.4589$
 CCT=7252K (Duv=0.0008) Dominant WL: $L_d = 483.3$ nm Purity=11.9%
 Ratio: R=12.0% G=83.3% B=4.7% ; Peak WL: $L_p = 451.9$ nm FWHM=17.6nm
 Render Index: $R_a = 75.5$ CRI=66.2 TM30: $R_f = 72$ $R_g = 92$
 R1 =74 R2 =80 R3 =80 R4 =76 R5 =74 R6 =70 R7 =85
 R8 =65 R9 =0 R10=48 R11=73 R12=39 R13=75 R14=88 R15=71

Photo Parameters:

Flux = 97.35 lm Eff. : 6.93 lm/W $F_e = 311.2$ mW Scotopic:212.82 S/P:2.1862

Electrical parameters:

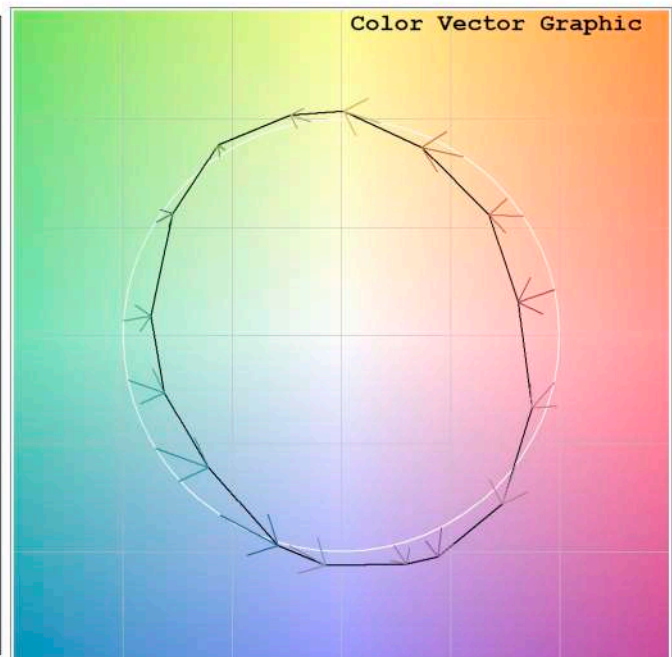
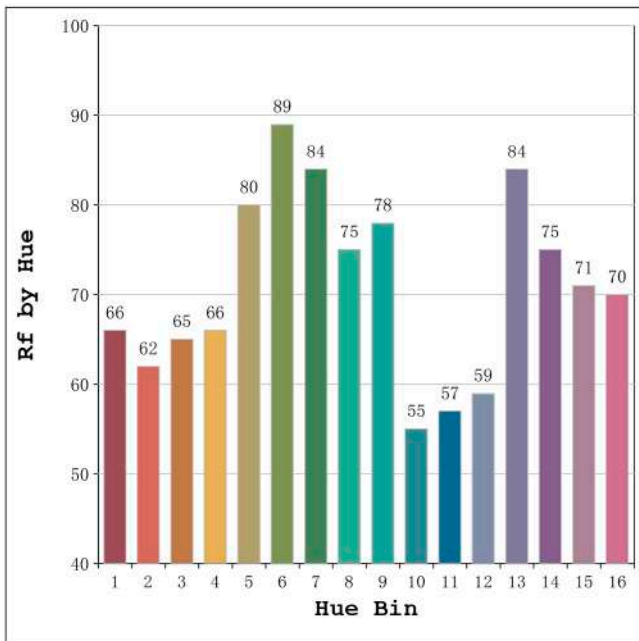
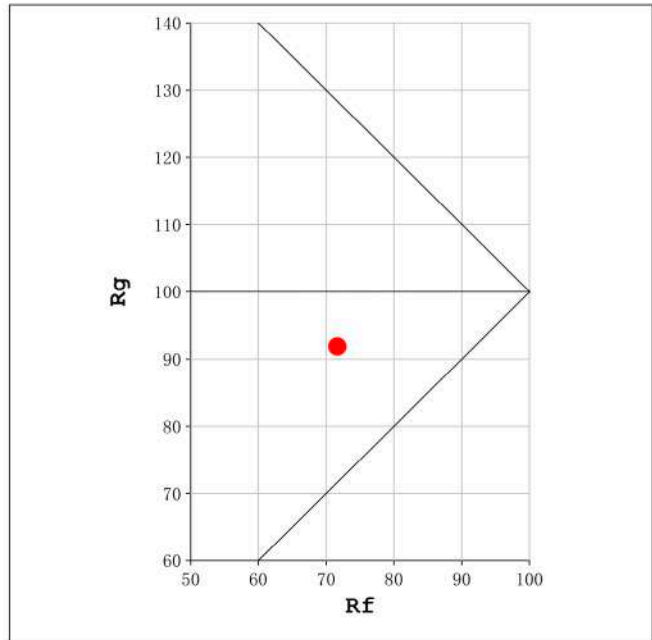
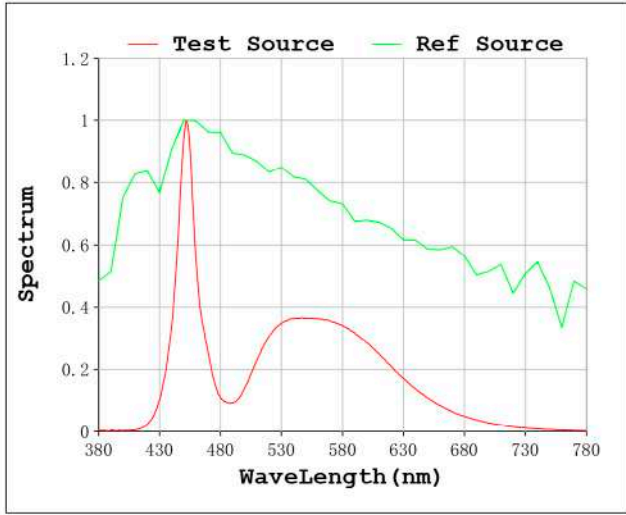
V = 11.998 V I = 1.172 A P = 14.06 W PF = 1.000

Status: Integral T = 5000 ms $I_p = 31197$ (48%)

Model:Ecoled optic 2 premium
 Tester:Sergio Carneros
 Temperature:20Deg
 Manufacturer:Luz Negra

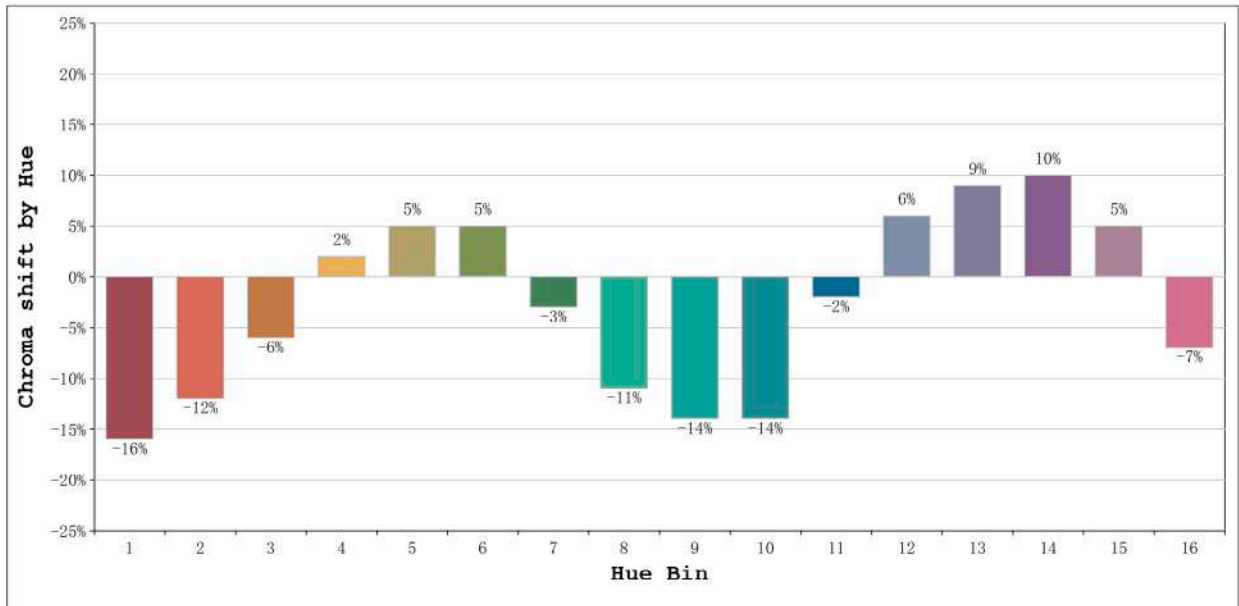
Number: 43.002
 Date:2022-04-27 08:40:10
 Humidity:50%
 Remarks:20 modulos led

Rf: 72 CCT: 7252 K u': 0.1965
Rg: 92 Duv: 0.0008 v': 0.4589



Model:Ecoled optic 2 premium
Tester:Sergio Carneros
Temperature:20Deg
Manufacturer:Luz Negra

Number: 43.002
Date:2022-04-27 08:40:10
Humidity:50%
Remarks:20 modulos led



Hue Bin	Hue Angle	Rf	Graphic shift(%)	
			Chroma	Hue
1	0.0° - 22.5°	66	-16	-1
2	22.5° - 45.0°	62	-12	9
3	45.0° - 67.5°	65	-6	19
4	67.5° - 90.0°	66	2	17
5	90.0° - 112.5°	80	5	8
6	112.5° - 135.0°	89	5	-1
7	135.0° - 157.5°	84	-3	-7
8	157.5° - 180.0°	75	-11	-4
9	180.0° - 202.5°	78	-14	9
10	202.5° - 225.0°	55	-14	21
11	225.0° - 247.5°	57	-2	30
12	247.5° - 270.0°	59	6	18
13	270.0° - 292.5°	84	9	4
14	292.5° - 315.0°	75	10	-8
15	315.0° - 337.5°	71	5	-17
16	337.5° - 360.0°	70	-7	-13

Model:Ecoled optic 2 premium
 Tester:Sergio Carneros
 Temperature:20Deg
 Manufacturer:Luz Negra

Number: 43.002
 Date:2022-04-27 08:40:10
 Humidity:50%
 Remarks:20 modulos led