

## LED DIGITAL

## HAWAI

## FLEXIBLE STRIP

Ref: 35.002

RGB DIGITAL

Flexible led strip with digital led in **RGB "PRO"** series

IP20 with 60 leds/metre and cuttable every led.

Requires use with led profile to permit dissipation.

**10mm PCB**

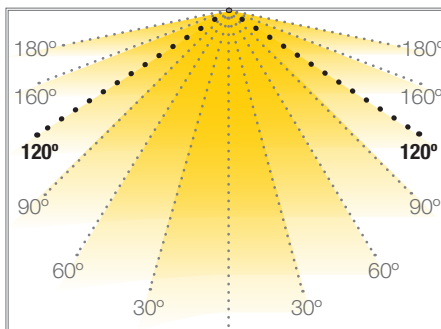
Maximum connection in open circuit: 5m.

Estimated lifespan: 50000h \*

\* Depending on the dissipation of the profile, the daily working hours and the external environmental working temperature

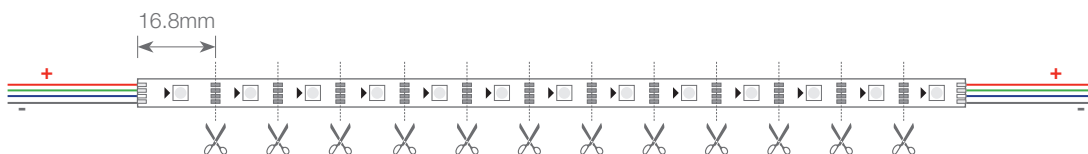
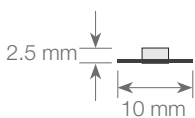
Compatible with controllers:

- 41.098
- 41.048
- 41.037
- 41.036
- Protopixel controllers



Power (W)	9W/m
Voltage (V)	12V
IC type	WS2815
Lumens	260 Lm/m
CRI	>45
Led control	led to led
Light emission	120°
Waterproofing	IP20
N° leds/m	60
Measurements	5000x10x2.5mm
Cuttable	every 16.8mm
PCB	10mm
Working temperature	-20°C / +50°C
Apt for	indoor
Packaging	1 roll/5m
Guarantee	3 years

Approved by: 

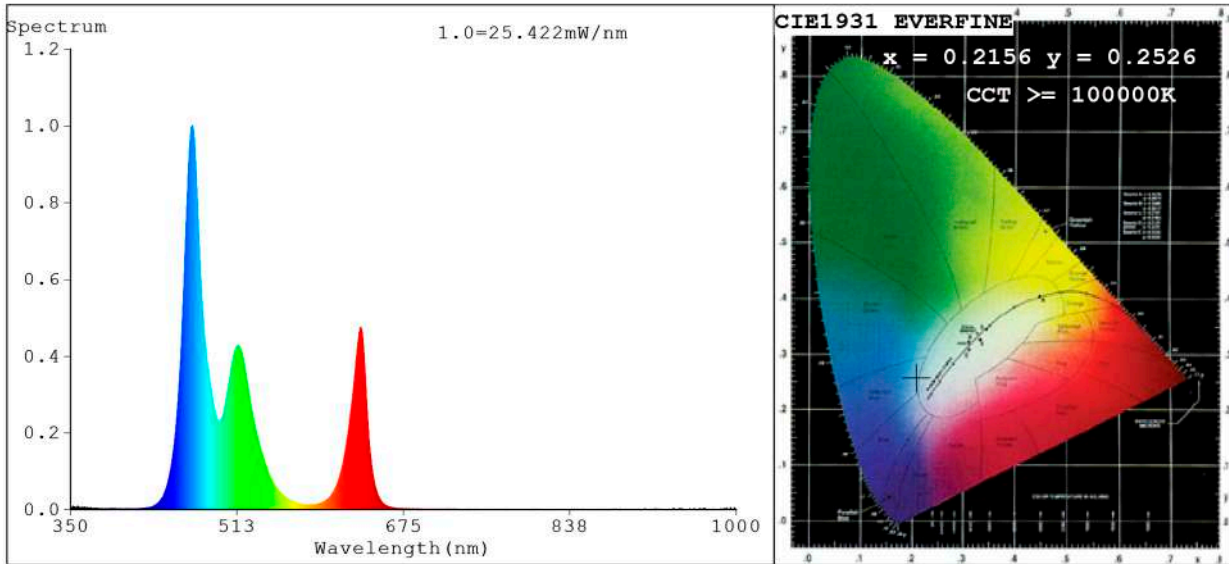


**BARCELONA**  
 C/ Carles Buigues, 13  
 08420 Canovelles  
 Info@luznegra.net  
 Tel: +34 938 402 598

**MADRID**  
 C/ Adaptación, 27  
 28906 Getafe  
 centro@luznegra.net  
 Tel: +34 916 416 081

**PARIS**  
 113 Avenue Joffre  
 77450 Esbly  
 france@luznegra.net  
 Tel: +33 (0) 160 426 585

**Spectrum Test Report**



**Color Parameters:**

Chromaticity Coordinate:  $x=0.2156$   $y=0.2526$  /  $u'=0.1540$   $v'=0.4060$   
 CCT=100000K (Duv=0.0270) Dominant WL:Ld =482.3nm Purity=46.7%  
 Ratio:R=17.9% G=63.5% B=18.6%;; Peak WL:Lp=469.0nm FWHM=19.8nm  
 Render Index:Ra=46.0 CRI=43.6 TM30:Rf=32 Rg=97  
 R1 =50 R2 =47 R3 =40 R4 =58 R5 =69 R6 =45 R7 =43  
 R8 =16 R9 =0 R10=0 R11=78 R12=59 R13=41 R14=64 R15=29

**Photo Parameters:**

Flux = 260.2 lm Eff. : 30.84 lm/W Fe = 1.256 W Scotopic:1276.4 S/P:4.9044

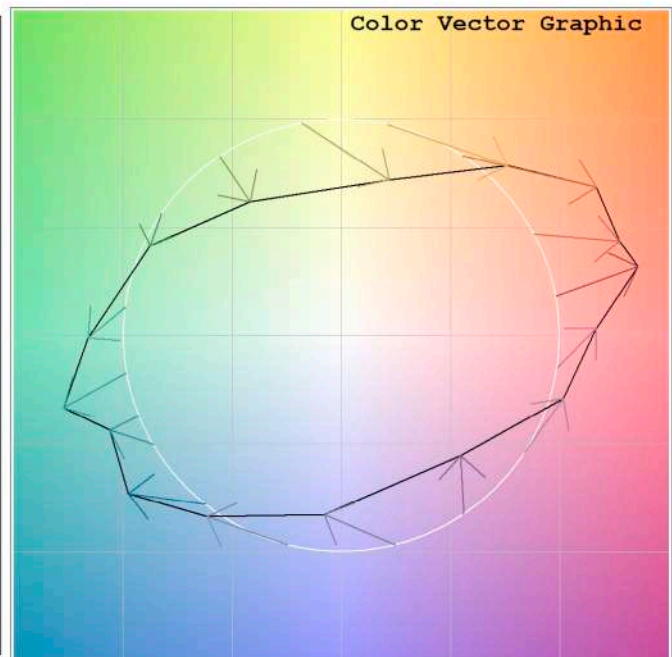
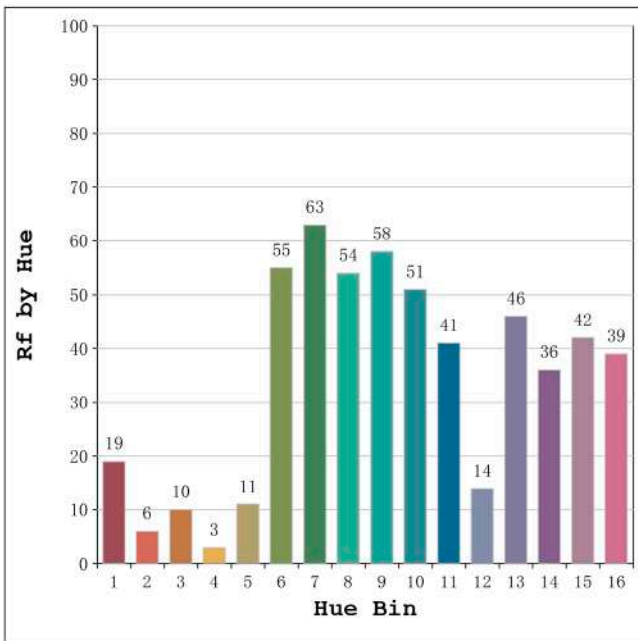
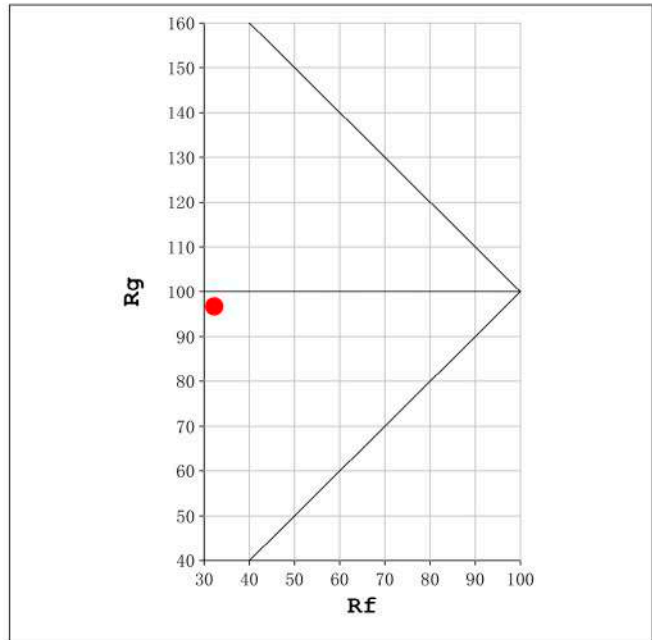
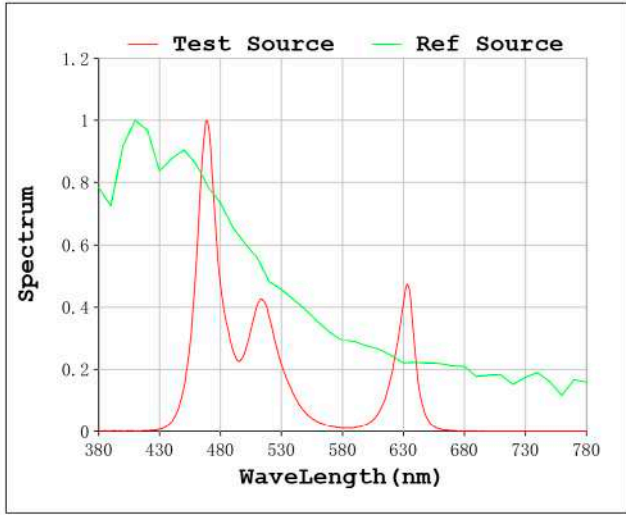
**Electrical parameters:**

V = 11.998 V I = 0.7034 A P = 8.439 W PF = 1.000

Status: Integral T = 1000 ms Ip = 34365 (52%)

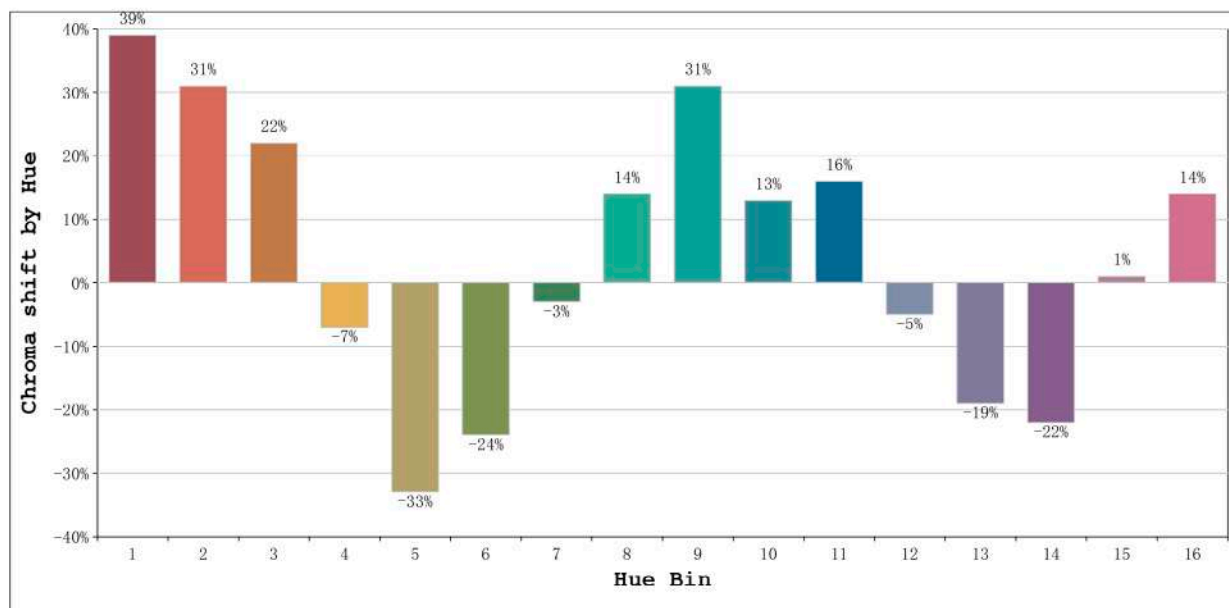
Model:Ecoled Hawaii	Number: 35.002
Tester:Sergio Carneros	Date:26-5-2021
Temperature:25Deg	Humidity:57%
Manufacturer:Luz Negra S.L	Remarks:100cm de tira flexible

Rf: 32      CCT: 100000 K      u': 0.1540  
Rg: 97      Duv: 0.0270      v': 0.4060



Model:Ecoled Hawaii  
Tester:Sergio Carneros  
Temperature:25Deg  
Manufacturer:Luz Negra S.L

Number: 35.002  
Date:26-5-2021  
Humidity:57%  
Remarks:100cm de tira flexible



Hue Bin	Hue Angle	Rf	Graphic shift(%)	
			Chroma	Hue
1	0.0° - 22.5°	19	39	6
2	22.5° - 45.0°	6	31	-24
3	45.0° - 67.5°	10	22	-58
4	67.5° - 90.0°	3	-7	-57
5	90.0° - 112.5°	11	-33	-33
6	112.5° - 135.0°	55	-24	0
7	135.0° - 157.5°	63	-3	15
8	157.5° - 180.0°	54	14	18
9	180.0° - 202.5°	58	31	10
10	202.5° - 225.0°	51	13	-16
11	225.0° - 247.5°	41	16	-31
12	247.5° - 270.0°	14	-5	-38
13	270.0° - 292.5°	46	-19	-28
14	292.5° - 315.0°	36	-22	14
15	315.0° - 337.5°	42	1	31
16	337.5° - 360.0°	39	14	21

Model:Ecoled Hawai  
 Tester:Sergio Carneros  
 Temperature:25Deg  
 Manufacturer:Luz Negra S.L

Number: 35.002  
 Date:26-5-2021  
 Humidity:57%  
 Remarks:100cm de tira flexible