

MEDIA LUMINOSIDAD

CRETA

TIRAS FLEXIBLES

Ref: 31.150

2300°K / 6000°K

Tira de led exclusiva para conexiones en "H".

Tira flexible serie "PRO"

IP20 con 240 leds/metro 2835SMD.

Requiere uso de led profile para disipación.

Cinta térmica disipadora incluida.

PCB 5mm

Uso diario máximo recomendado: 18h

Conexión máxima en circuito abierto: 2.5m

Conexión máxima en circuito cerrado: 5m

Vida útil: 30.000h*

*En función de la disipación del perfil, de las horas diarias trabajadas y de la temperatura externa ambiental de trabajo.



potencia



120°



voltaje



IP20



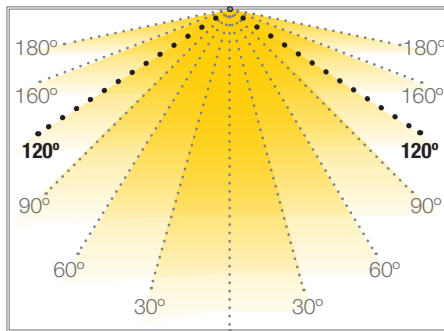
25mm



interior

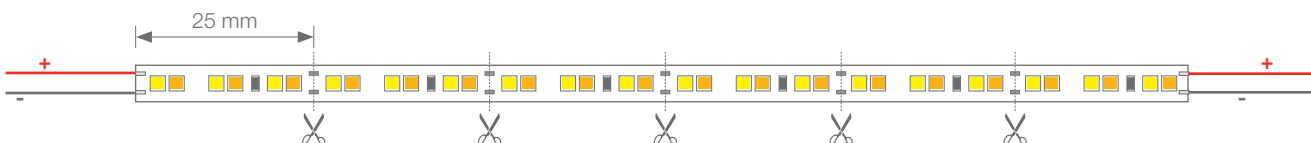
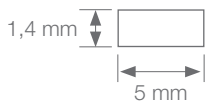


trabajo



Potencia (W)	10W/m
Voltaje (V)	12V
Tipo Led	SMD2835
Lumens (2300K)	796 Lm/m
Lumens (6000K)	713 Lm/m
Emisión de luz	120°
Estanqueidad (IP)	IP20
CRI	>90
Nº leds/m	240/m
Medidas	5000x10x1,4mm
Cortable	cada 25mm
PCB	5mm
Temperatura trabajo	-25°C / +45°C
Apto para	interior
Embalaje	1 rollo/5m
Garantía	3 años

Aprobado por:  

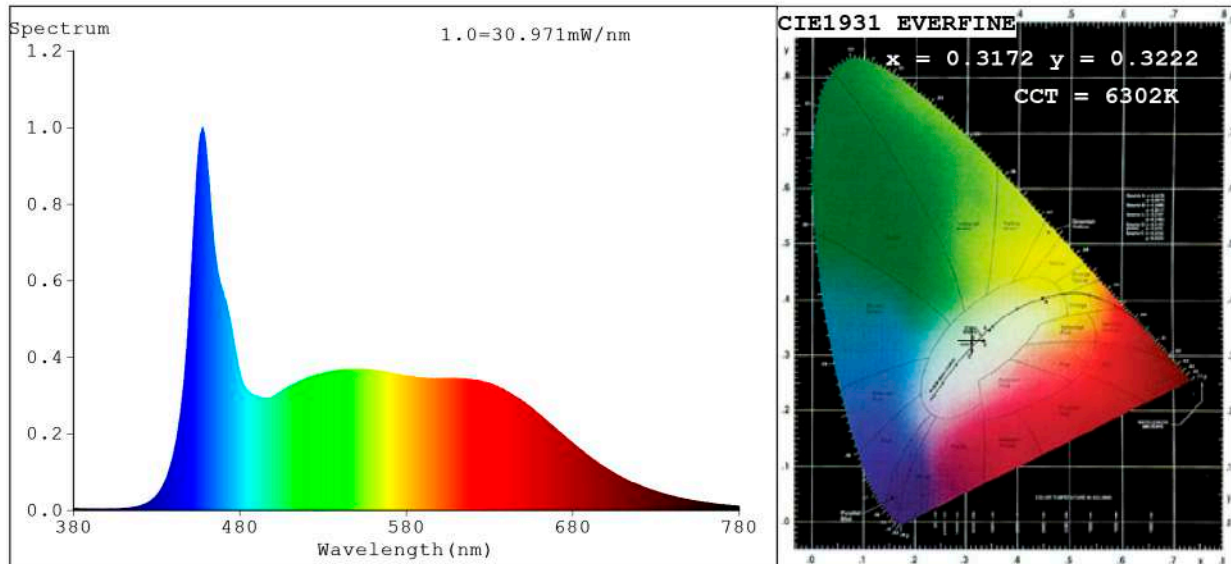


BARCELONA
C/ Carles Buhigues, 13
08420 Canovelles
Info@luznegra.net
Tel: +34 938 402 598

MADRID
C/ Minas, 35-37
28923 Alcorcón
centro@luznegra.net
Tel: +34 916 416 081

PARIS
113 Avenue Joffre
77450 Esbly
france@luznegra.net
Tel: +33 (0) 160 426 585

Spectrum Test Report



Color Parameters:

Chromaticity Coordinate: $x=0.3172$ $y=0.3222$ / $u'=0.2036$ $v'=0.4653$
 CCT=6302K(Duv=-0.0027) Dominant WL:Ld =482.2nm Purity=6.4%
 Ratio:R=16.4% G=76.0% B=7.5%; Peak WL:Lp=457.7nm FWHM=24.9nm
 Render Index:Ra=91.8 CRI=90.8 TM30:Rf=87 Rg=99 Lav=549.5nm
 R1 =94 R2 =94 R3 =96 R4 =88 R5 =91 R6 =91 R7 =89
 R8 =91 R9 =94 R10=91 R11=92 R12=66 R13=95 R14=99 R15=92

Photo Parameters:

Flux = 796.2 lm Eff. : 96.71 lm/W Fe = 2.959 W Scotopic:1946.5 S/P:2.4447

Electrical parameters:

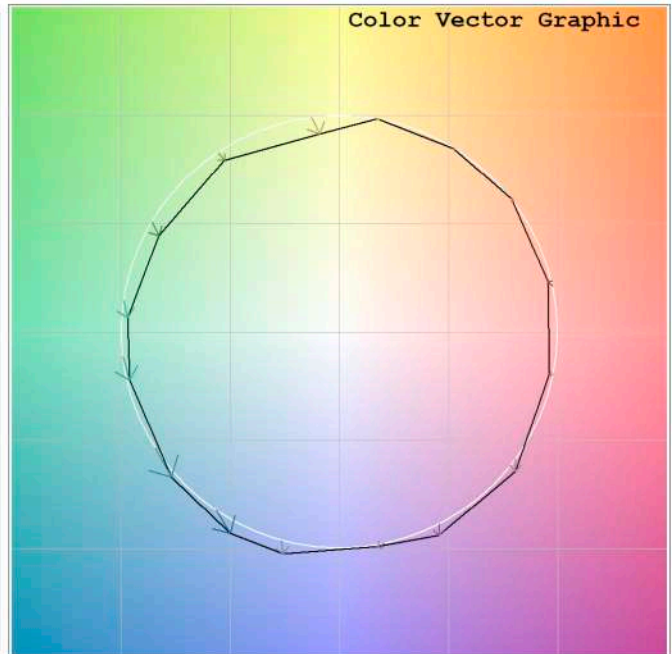
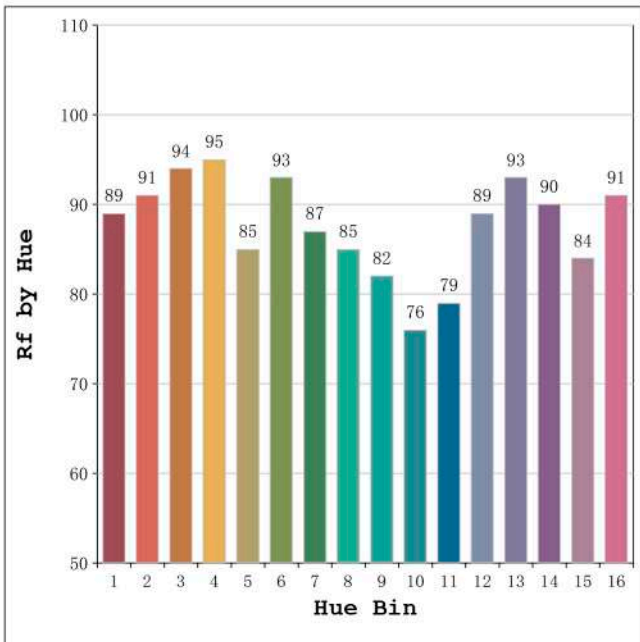
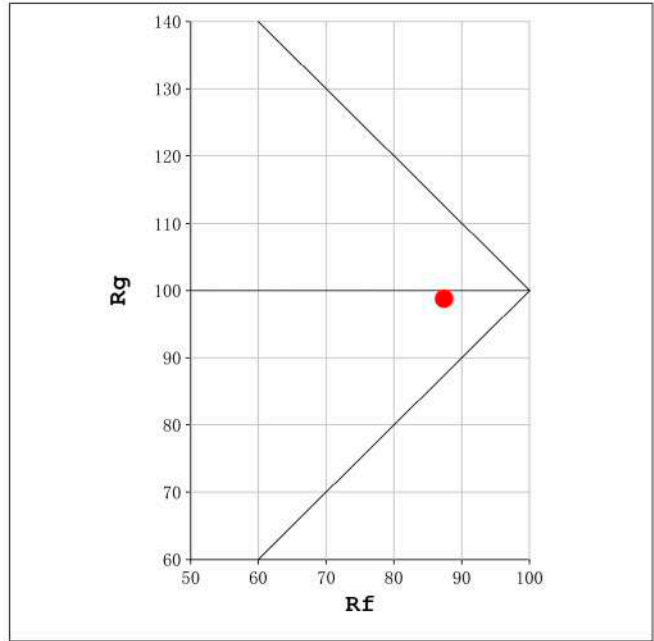
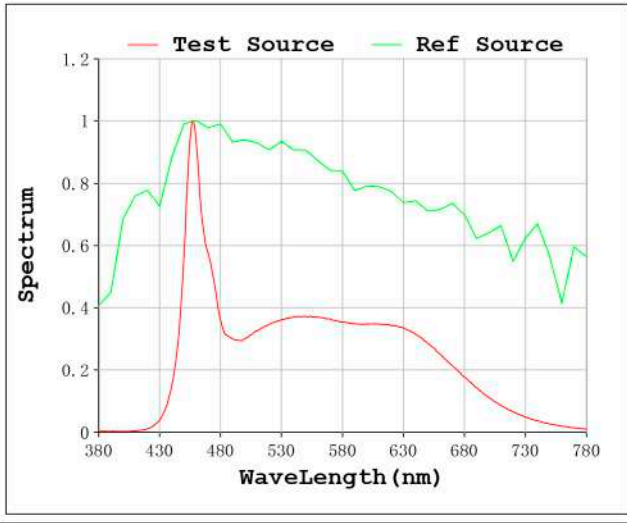
V = 11.998 V I = 0.6862 A P = 8.233 W PF = 1.000

Status: Integral T = 1000 ms Ip = 47668 (73%)

Model:Ecoled Creta (CW)
 Tester:Sergio Carneros
 Temperature:25Deg
 Manufacturer:Luz Negra.S.L

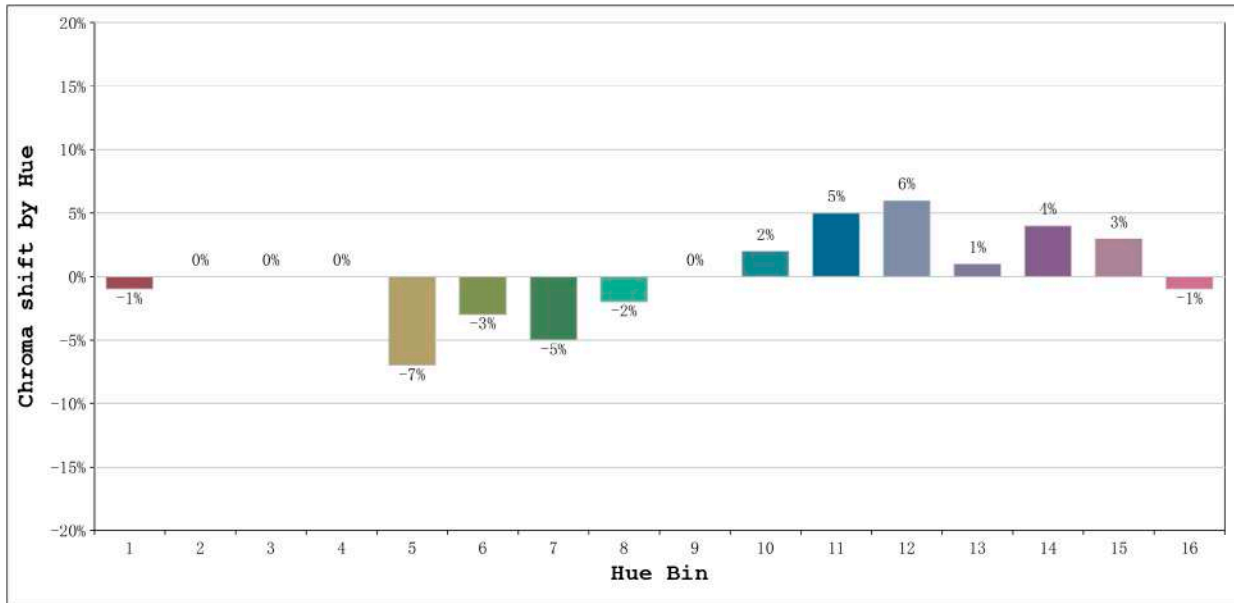
Number: 31.150
 Date:2022-06-01 13:50:24
 Humidity:57%
 Remarks:100cm Tira flexible

Rf: 87 CCT: 6302 K u': 0.2036
Rg: 99 Duv: -0.0027 v': 0.4653



Model:Ecoled Creta (CW)
Tester:Sergio Carneros
Temperature:25Deg
Manufacturer:Luz Negra.S.L

Number: 31.150
Date:2022-06-01 13:50:24
Humidity:57%
Remarks:100cm Tira flexible

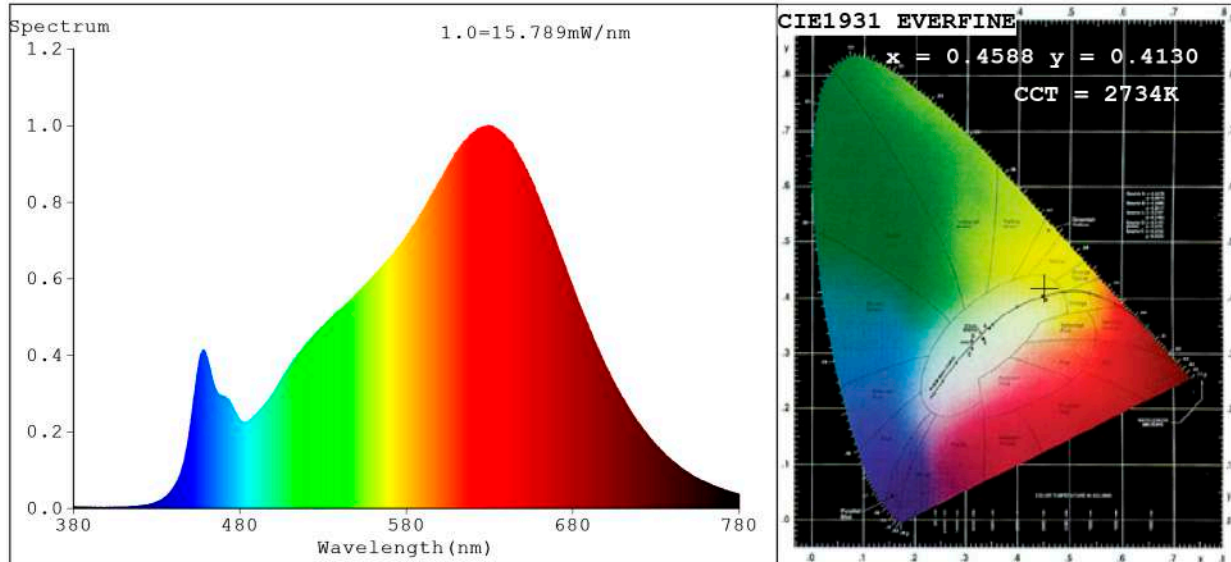


Hue Bin	Hue Angle	Rf	Graphic shift(%)	
			Chroma	Hue
1	0.0° - 22.5°	89	-1	3
2	22.5° - 45.0°	91	0	2
3	45.0° - 67.5°	94	0	1
4	67.5° - 90.0°	95	0	1
5	90.0° - 112.5°	85	-7	-1
6	112.5° - 135.0°	93	-3	0
7	135.0° - 157.5°	87	-5	4
8	157.5° - 180.0°	85	-2	7
9	180.0° - 202.5°	82	0	11
10	202.5° - 225.0°	76	2	15
11	225.0° - 247.5°	79	5	11
12	247.5° - 270.0°	89	6	2
13	270.0° - 292.5°	93	1	-3
14	292.5° - 315.0°	90	4	-2
15	315.0° - 337.5°	84	3	-4
16	337.5° - 360.0°	91	-1	0

Model:Ecoled Creta (CW)
 Tester:Sergio Carneros
 Temperature:25Deg
 Manufacturer:Luz Negra.S.L

Number: 31.150
 Date:2022-06-01 13:50:24
 Humidity:57%
 Remarks:100cm Tira flexible

Spectrum Test Report



Color Parameters:

Chromaticity Coordinate: $x=0.4588$ $y=0.4130$ / $u'=0.2607$ $v'=0.5281$
 CCT=2734K(Duv=0.0010) Dominant WL:Ld =583.7nm Purity=61.7%
 Ratio:R=26.4% G=70.8% B=2.7%; Peak WL:Lp=629.6nm FWHM=151.5nm
 Render Index:Ra=95.1 CRI=93.0 TM30:Rf=90 Rg=97 Lav=610.5nm
 R1 =96 R2 =99 R3 =100 R4 =94 R5 =95 R6 =98 R7 =93
 R8 =86 R9 =72 R10=96 R11=96 R12=82 R13=97 R14=99 R15=92

Photo Parameters:

Flux = 713.8 lm Eff. : 86.44 lm/W Fe = 2.597 W Scotopic:947.14 S/P:1.3268

Electrical parameters:

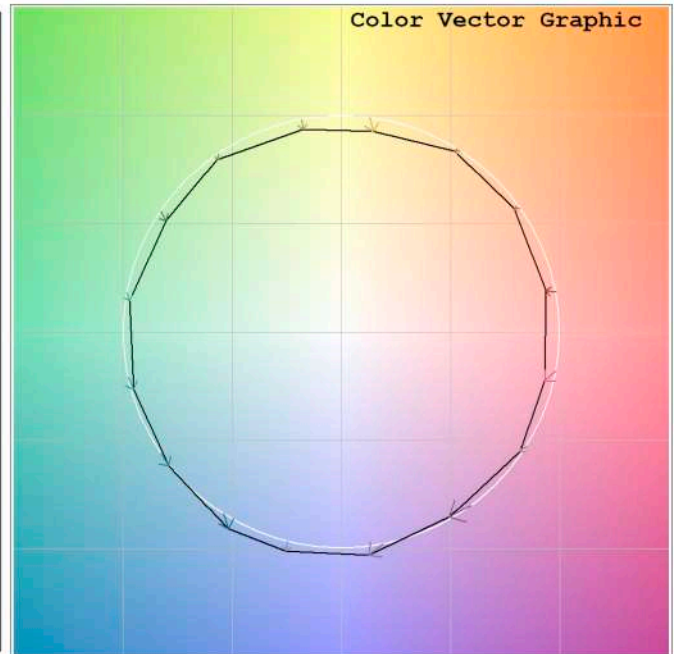
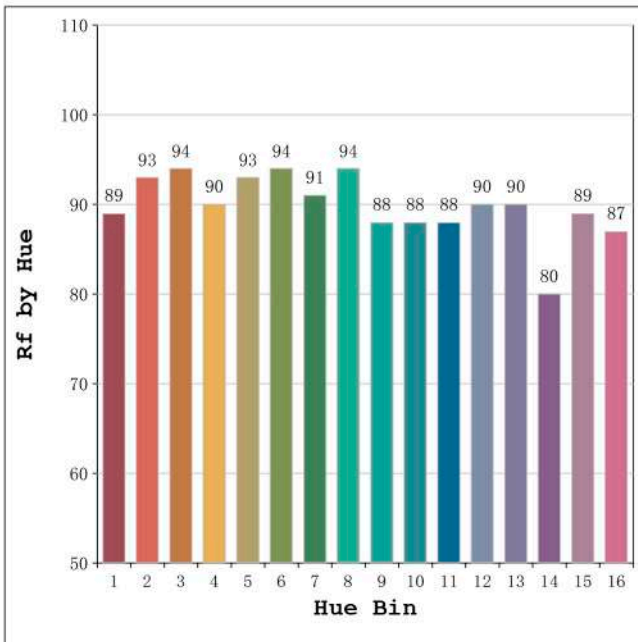
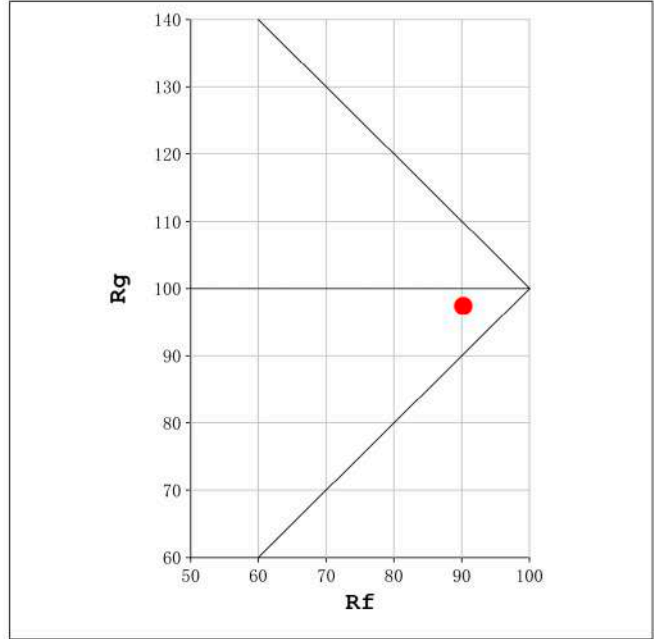
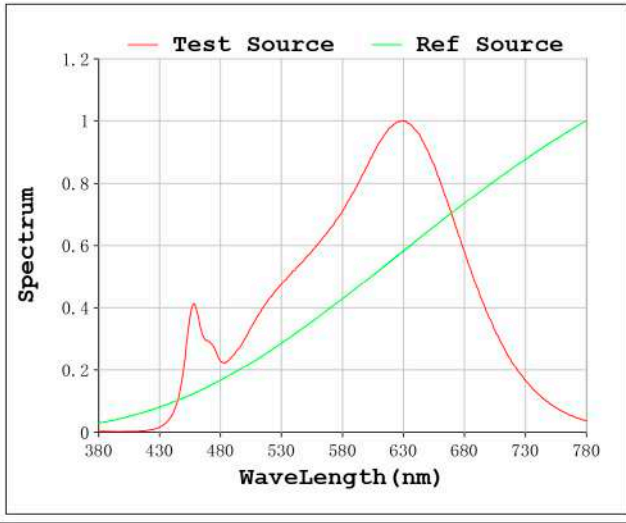
V = 11.998 V I = 0.6883 A P = 8.258 W PF = 1.000

Status: Integral T = 1775 ms Ip = 52337 (80%)

Model:Ecoled Creta (WW)
 Tester:Sergio Carneros
 Temperature:25Deg
 Manufacturer:Luz Negra.S.L

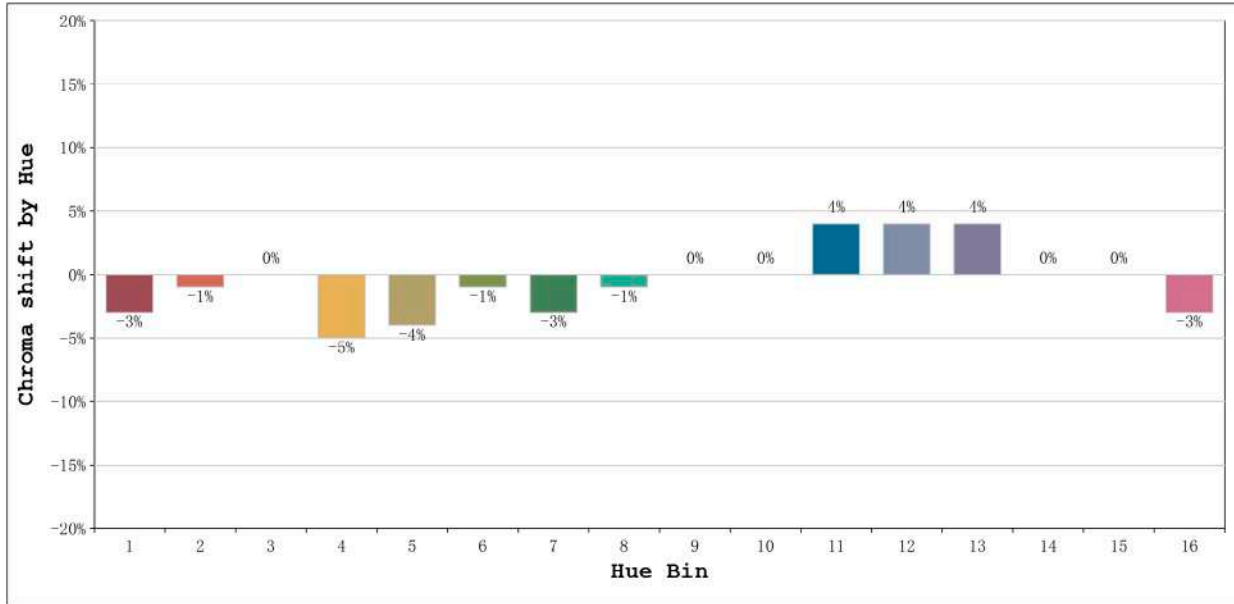
Number: 31.150
 Date:2022-06-01 13:51:39
 Humidity:57%
 Remarks:100cm Tira flexible

Rf: 90 CCT: 2734 K u': 0.2607
Rg: 97 Duv: 0.0010 v': 0.5281



Model:Ecoled Creta (WW)
Tester:Sergio Carneros
Temperature:25Deg
Manufacturer:Luz Negra.S.L

Number: 31.150
Date:2022-06-01 13:51:39
Humidity:57%
Remarks:100cm Tira flexible



Hue Bin	Hue Angle	Rf	Graphic shift(%)	
			Chroma	Hue
1	0.0° - 22.5°	89	-3	2
2	22.5° - 45.0°	93	-1	2
3	45.0° - 67.5°	94	0	2
4	67.5° - 90.0°	90	-5	-2
5	90.0° - 112.5°	93	-4	0
6	112.5° - 135.0°	94	-1	2
7	135.0° - 157.5°	91	-3	2
8	157.5° - 180.0°	94	-1	3
9	180.0° - 202.5°	88	0	6
10	202.5° - 225.0°	88	0	7
11	225.0° - 247.5°	88	4	6
12	247.5° - 270.0°	90	4	0
13	270.0° - 292.5°	90	4	-7
14	292.5° - 315.0°	80	0	-10
15	315.0° - 337.5°	89	0	-3
16	337.5° - 360.0°	87	-3	-5

Model:Ecoled Creta (WW)
Tester:Sergio Carneros
Temperature:25Deg
Manufacturer:Luz Negra.S.L

Number: 31.150
Date:2022-06-01 13:51:39
Humidity:57%
Remarks:100cm Tira flexible