

MEDIUM BRIGHTNESS

Ref: 31.008 6500°K
 Ref: 31.009 4000°K
 Ref: 31.010 3000°K

Single-coloured flexible strip "ELITE"
 IP20 with 140 leds/metre 2835SMD.
 Requires use with led profile to permit dissipation.

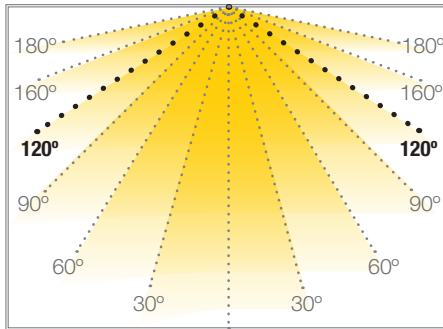
Heat dissipation tape included.

10mm PCB

CRI>80

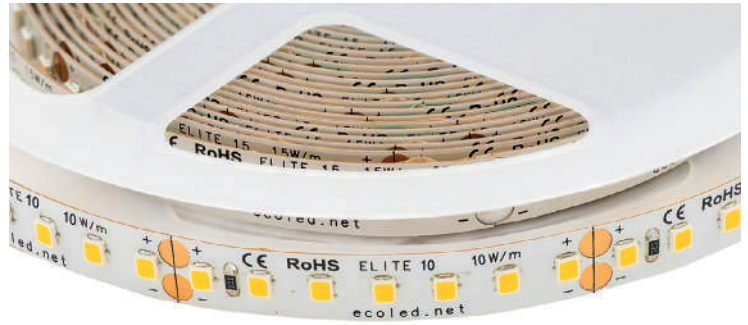
Daily recommended use: 18h
 Maximum connection in open circuit: 10m
 Maximum connection in closed circuit: 18m
 Estimated lifespan: 36000h *

* Depending on the dissipation of the profile, the daily working hours and the external environmental working temperature



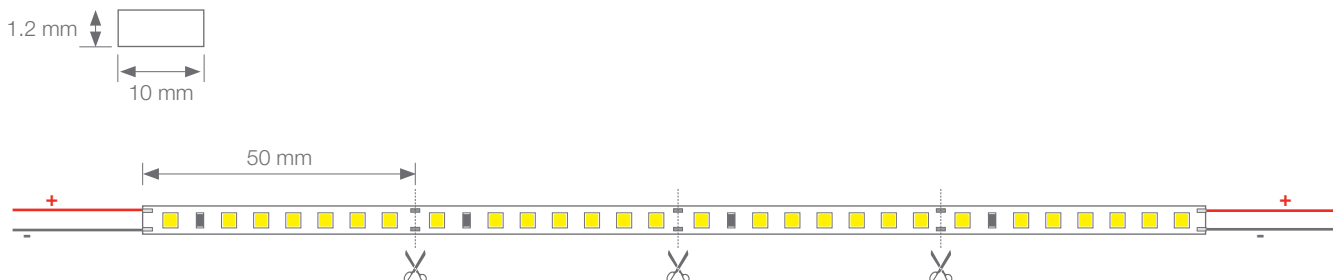
ÉLITE 10

FLEXIBLE STRIP



Power (W)	10W/m
Voltage (V)	24V
Led type	SMD2835
Lumens (6500°K)	1250 Lm/m
Lumens (4000°K)	1200 Lm/m
Lumens (3000°K)	1205 Lm/m
CRI	>80
Light emission	120°
Waterproofing	IP20
N° leds/m	140
Measurements	5000x10x1.2mm
Cuttable	every 50mm
PCB	10mm
Working temperature	-20°C / +45°C
Apt for	indoor
Packaging	1 roll/5m
Guarantee	3 years

Aprobado por: 

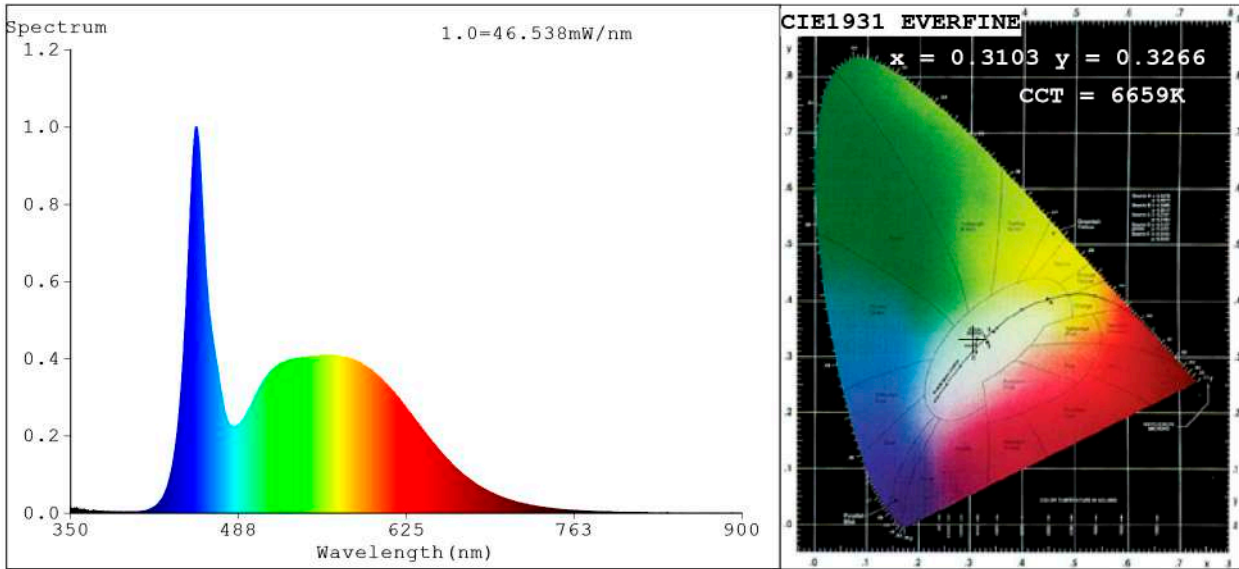


BARCELONA
 C/ Carles Buhigues, 13
 08420 Canovelles
 Info@luznegra.net
 Tel: +34 938 402 598

MADRID
 C/ Adaptación, 27
 28906 Getafe
 centro@luznegra.net
 Tel: +34 916 416 081

PARIS
 113 Avenue Joffre
 77450 Esbly
 france@luznegra.net
 Tel: +33 (0) 160 426 585

Spectrum Test Report



Color Parameters:

Chromaticity Coordinate: $x=0.3103$ $y=0.3266$ / $u'=0.1971$ $v'=0.4667$
 CCT=6659K(Duv=0.0032) Dominant WL:Ld =487.9nm Purity=8.3%
 Ratio:R=13.5% G=80.5% B=6.0%; Peak WL:Lp=453.6nm FWHM=20.5nm
 Render Index:Ra=85.0 CRI=78.3 TM30:Rf=82 Rg=94
 R1 =84 R2 =90 R3 =93 R4 =83 R5 =84 R6 =85 R7 =89
 R8 =73 R9 =18 R10=76 R11=83 R12=56 R13=86 R14=96 R15=80

Photo Parameters:

Flux = 1251 lm Eff. : 132.18 lm/W Fe = 4.123 W Scotopic:2888 S/P:2.3078

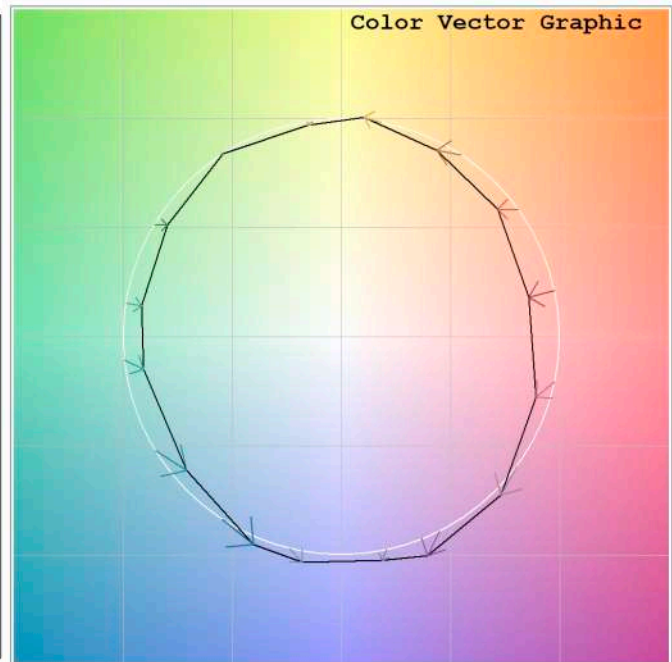
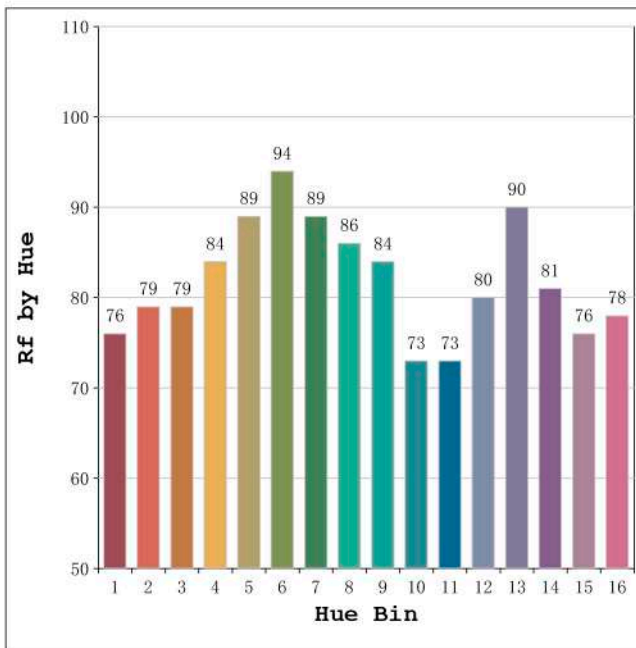
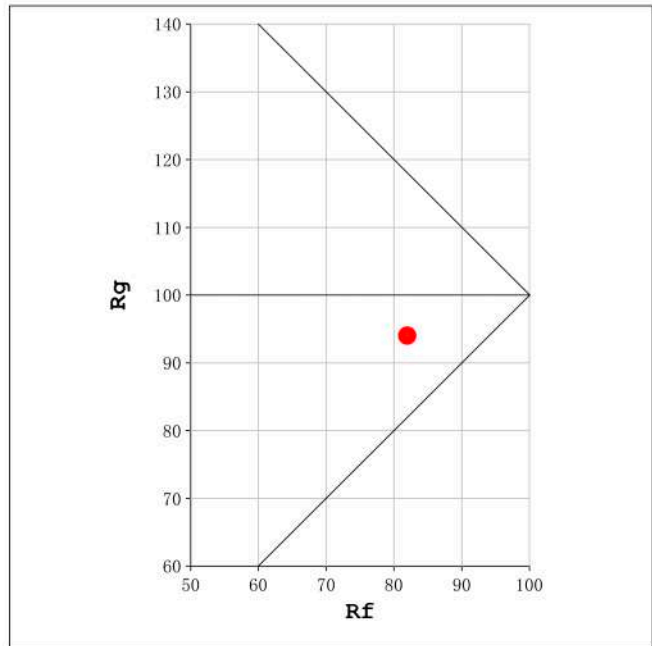
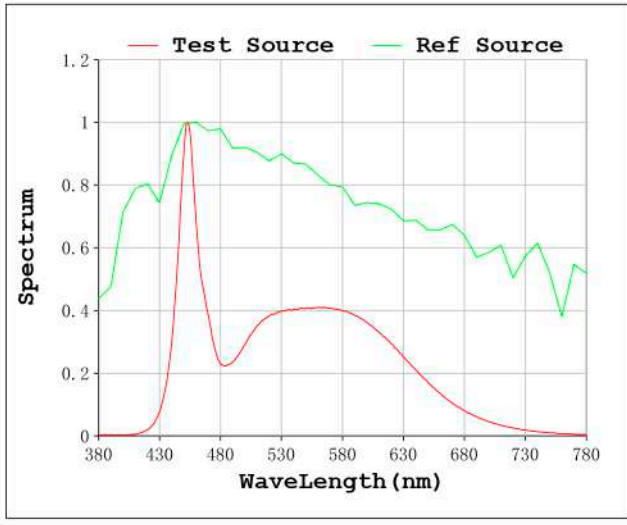
Electrical parameters:

V = 23.998 V I = 0.3945 A P = 9.467 W PF = 1.000

Status: Integral T = 425 ms Ip = 33379 (51%)

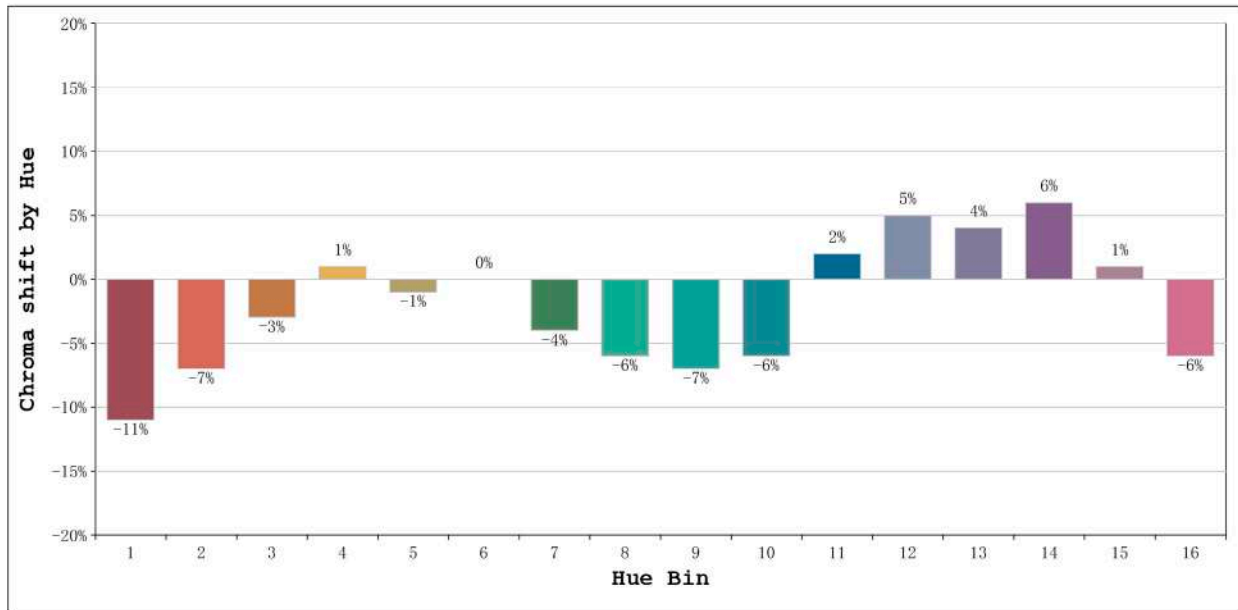
Model:Ecoled Élite 10 6500K	Number: 31.008
Tester:Sergio Carneros	Date:25-5-2021
Temperature:24Deg	Humidity:57%
Manufacturer:Luz Negra S.L	Remarks:100cm de tira flexible

Rf: 82 CCT: 6659 K u': 0.1971
Rg: 94 Duv: 0.0032 v': 0.4667



Model:Ecoled Élite 10 6500K
Tester:Sergio Carneros
Temperature:24Deg
Manufacturer:Luz Negra S.L

Number: 31.008
Date:25-5-2021
Humidity:57%
Remarks:100cm de tira flexible

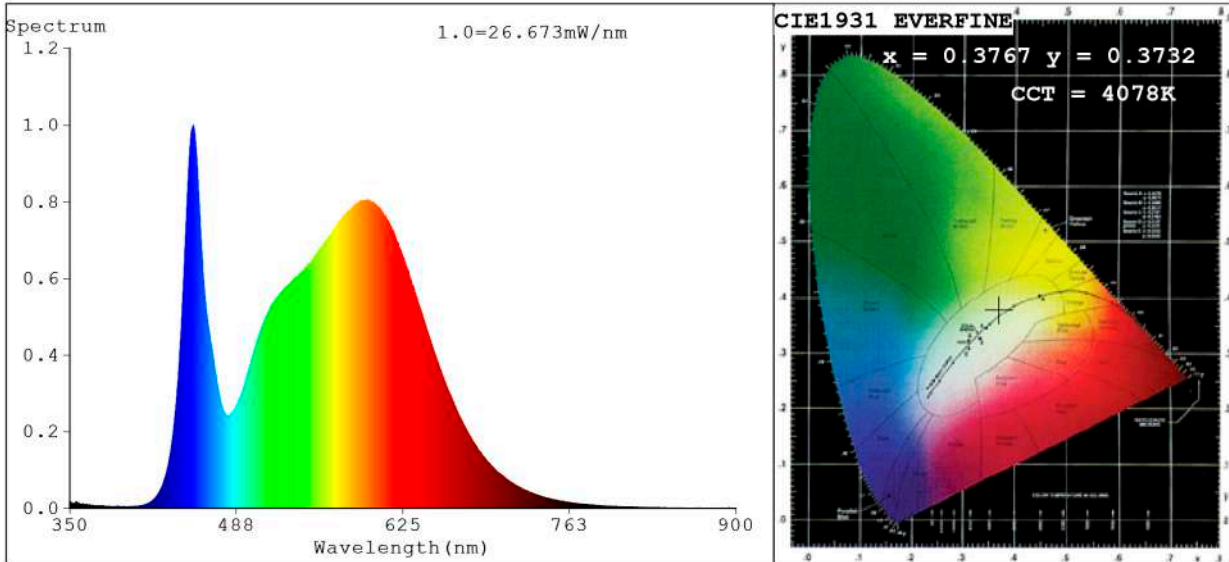


Hue Bin	Hue Angle	Rf	Graphic shift(%)	
			Chroma	Hue
1	0.0° - 22.5°	76	-11	0
2	22.5° - 45.0°	79	-7	6
3	45.0° - 67.5°	79	-3	10
4	67.5° - 90.0°	84	1	8
5	90.0° - 112.5°	89	-1	3
6	112.5° - 135.0°	94	0	-1
7	135.0° - 157.5°	89	-4	-2
8	157.5° - 180.0°	86	-6	0
9	180.0° - 202.5°	84	-7	6
10	202.5° - 225.0°	73	-6	16
11	225.0° - 247.5°	73	2	18
12	247.5° - 270.0°	80	5	7
13	270.0° - 292.5°	90	4	-2
14	292.5° - 315.0°	81	6	-10
15	315.0° - 337.5°	76	1	-14
16	337.5° - 360.0°	78	-6	-8

Model:Ecoled Élite 10 6500K
 Tester:Sergio Carneros
 Temperature:24Deg
 Manufacturer:Luz Negra S.L

Number: 31.008
 Date:25-5-2021
 Humidity:57%
 Remarks:100cm de tira flexible

Spectrum Test Report



Color Parameters:

Chromaticity Coordinate: $x=0.3767$ $y=0.3732$ $u'=0.2240$ $v'=0.4995$
 CCT=4078K (Duv=-0.0005) Dominant WL:Ld =579.1nm Purity=25.1%
 Ratio:R=18.3% G=78.0% B=3.7%; Peak WL:Lp=451.9nm FWHM=20.7nm
 Render Index:Ra=83.9 CRI=77.5 TM30:Rf=82 Rg=96
 R1 =83 R2 =90 R3 =95 R4 =83 R5 =82 R6 =86 R7 =86
 R8 =66 R9 =13 R10=76 R11=82 R12=61 R13=85 R14=97 R15=77

Photo Parameters:

Flux = 1244 lm Eff. : 133.86 lm/W Fe = 3.822 W Scotopic:2145.8 S/P:1.7242

Electrical parameters:

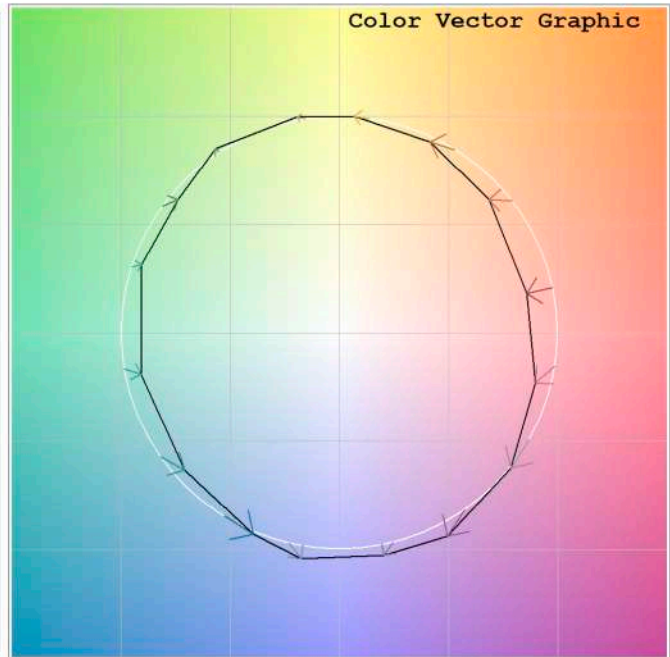
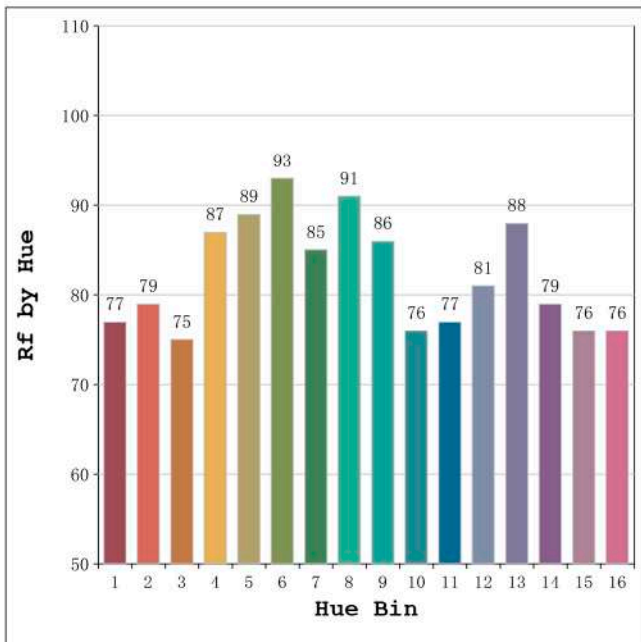
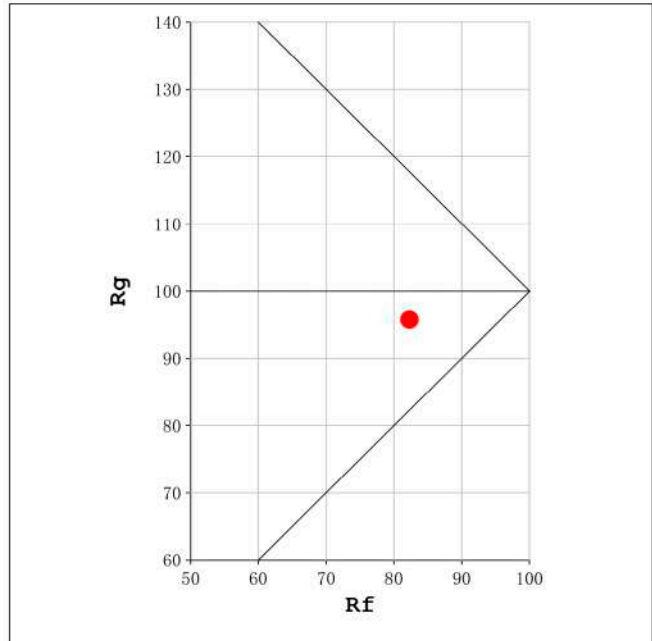
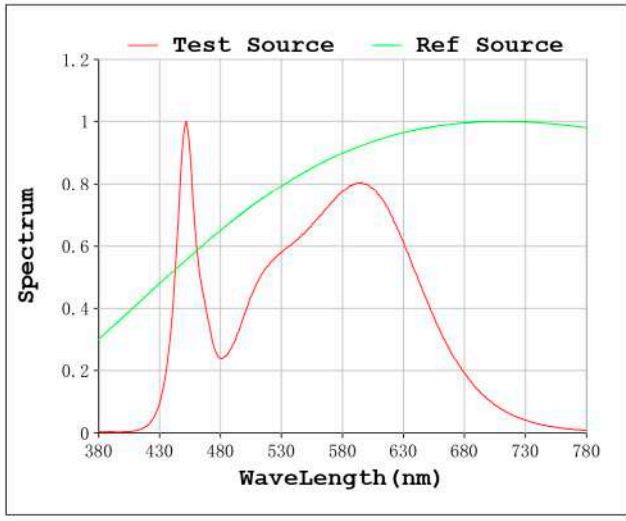
V = 23.998 V I = 0.3874 A P = 9.297 W PF = 1.000

Status: Integral T = 850 ms Ip = 37378 (57%)

Model:Ecoled Élite 10 4000K
 Tester:Sergio Carneros
 Temperature:24Deg
 Manufacturer:Luz Negra S.L

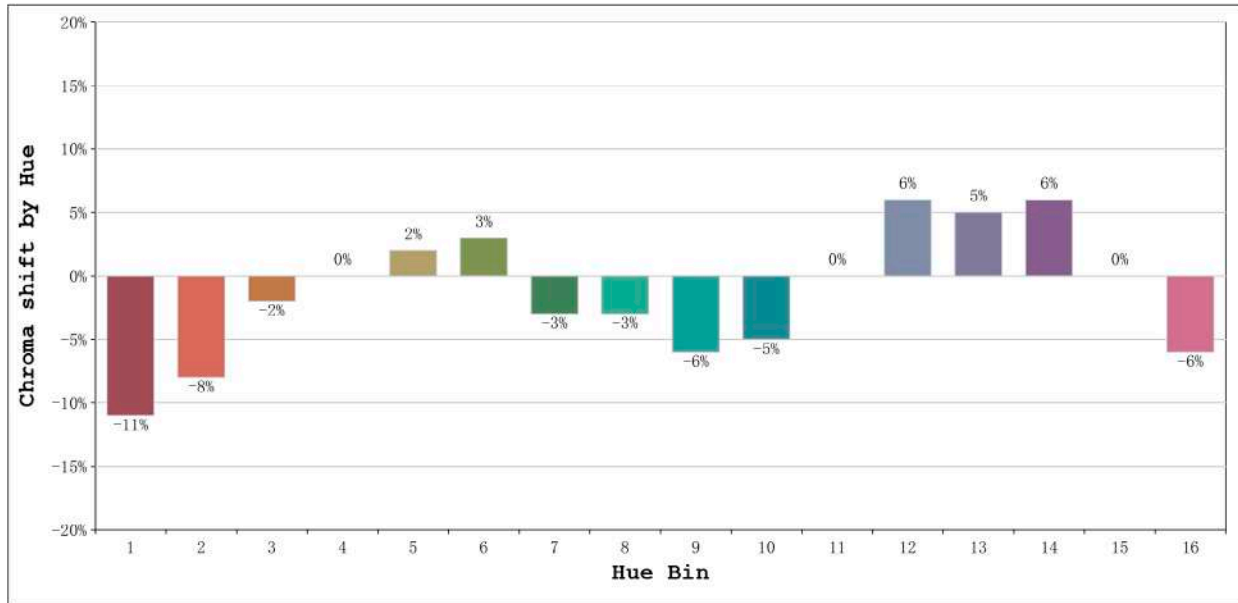
Number: 31.009
 Date:25-5-2021
 Humidity:57%
 Remarks:100cm de tira flexible

Rf: 82 CCT: 4078 K u': 0.2240
Rg: 96 Duv: -0.0005 v': 0.4995



Model:Ecoled Élite 10 4000K
Tester:Sergio Carneros
Temperature:24Deg
Manufacturer:Luz Negra S.L

Number: 31.009
Date:25-5-2021
Humidity:57%
Remarks:100cm de tira flexible

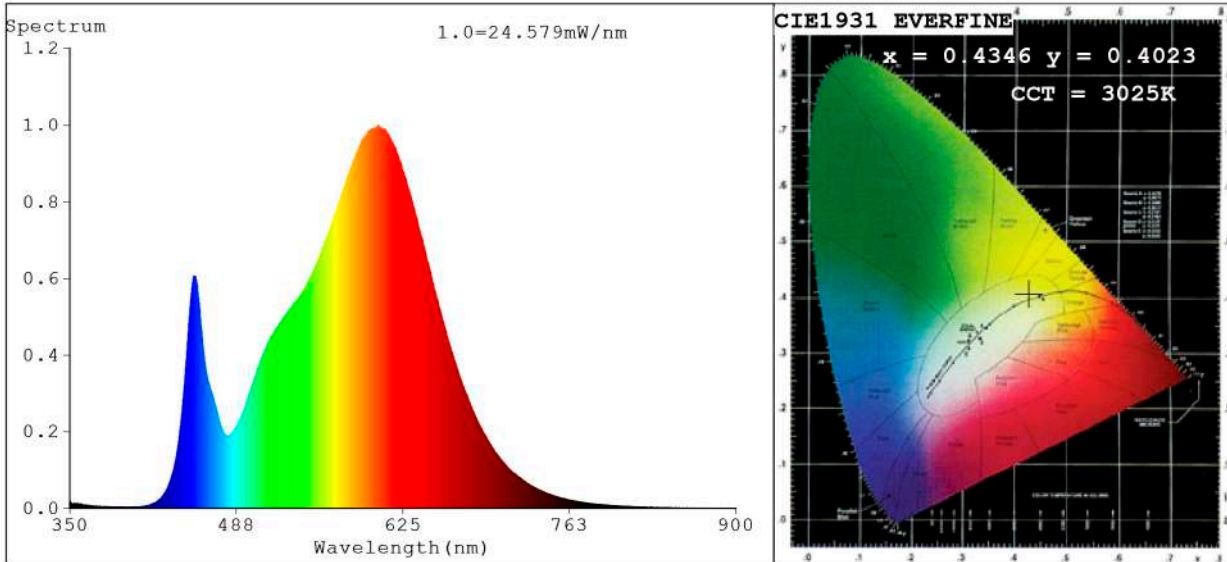


Hue Bin	Hue Angle	Rf	Graphic shift(%)	
			Chroma	Hue
1	0.0° - 22.5°	77	-11	0
2	22.5° - 45.0°	79	-8	7
3	45.0° - 67.5°	75	-2	11
4	67.5° - 90.0°	87	0	7
5	90.0° - 112.5°	89	2	4
6	112.5° - 135.0°	93	3	-1
7	135.0° - 157.5°	85	-3	-5
8	157.5° - 180.0°	91	-3	-1
9	180.0° - 202.5°	86	-6	4
10	202.5° - 225.0°	76	-5	11
11	225.0° - 247.5°	77	0	16
12	247.5° - 270.0°	81	6	7
13	270.0° - 292.5°	88	5	-4
14	292.5° - 315.0°	79	6	-12
15	315.0° - 337.5°	76	0	-14
16	337.5° - 360.0°	76	-6	-8

Model:Ecoled Élite 10 4000K
 Tester:Sergio Carneros
 Temperature:24Deg
 Manufacturer:Luz Negra S.L

Number: 31.009
 Date:25-5-2021
 Humidity:57%
 Remarks:100cm de tira flexible

Spectrum Test Report



Color Parameters:

Chromaticity Coordinate: $x=0.4346$ $y=0.4023$ $u'=0.2498$ $v'=0.5203$
 CCT=3025K (Duv=-0.0004) Dominant WL:Ld =582.9nm Purity=51.2%
 Ratio:R=22.8% G=74.6% B=2.6%; Peak WL:Lp=604.5nm FWHM=130.3nm
 Render Index:Ra=82.9 CRI=77.5 TM30:Rf=82 Rg=96
 R1 =82 R2 =92 R3 =96 R4 =80 R5 =82 R6 =89 R7 =83
 R8 =60 R9 =9 R10=80 R11=80 R12=69 R13=84 R14=99 R15=74

Photo Parameters:

Flux = 1205 lm Eff. : 127.58 lm/W Fe = 3.682 W Scotopic:1637.6 S/P:1.3592

Electrical parameters:

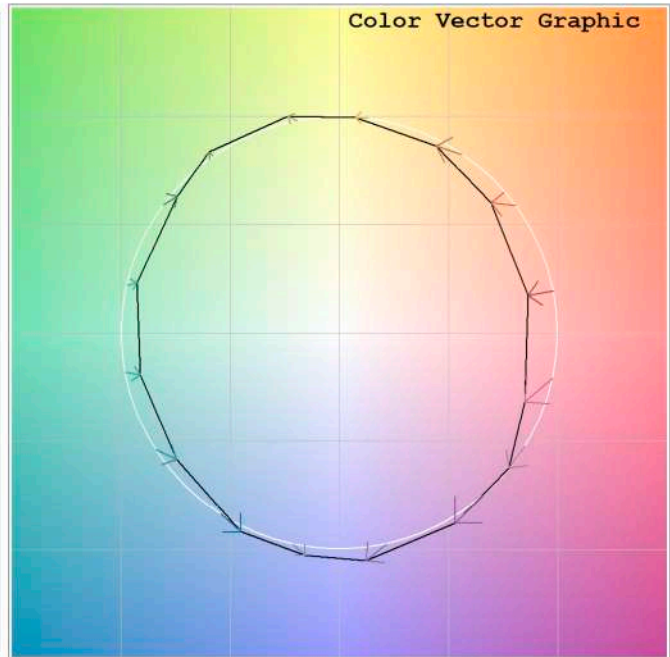
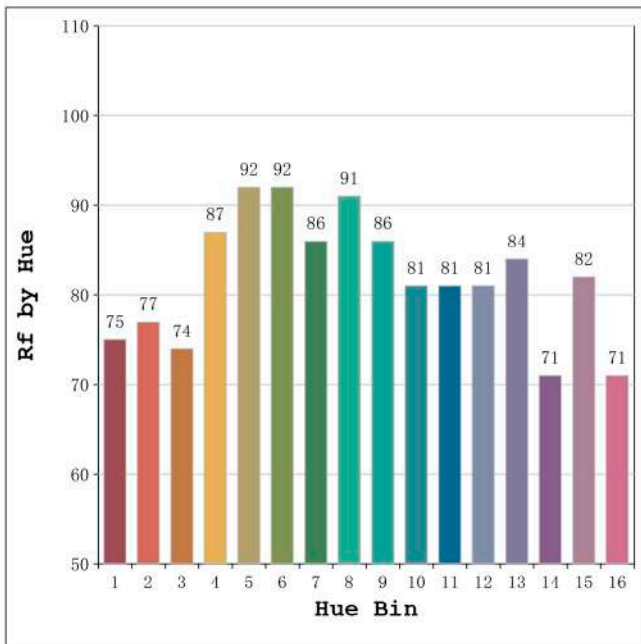
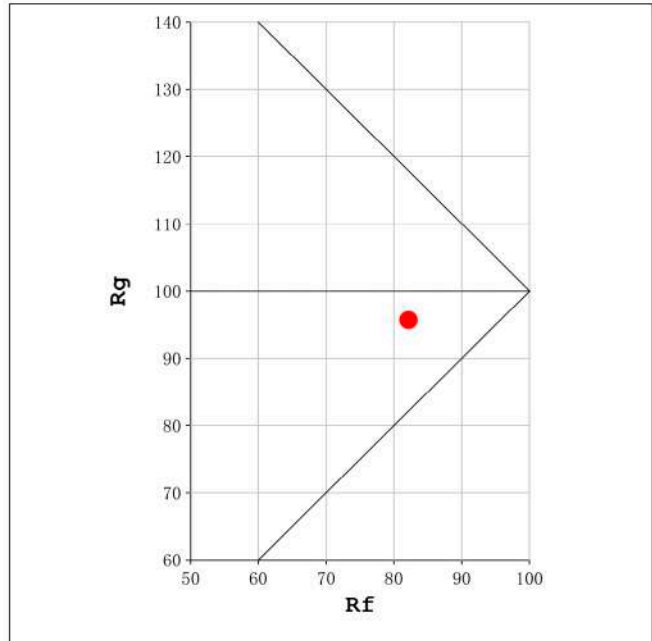
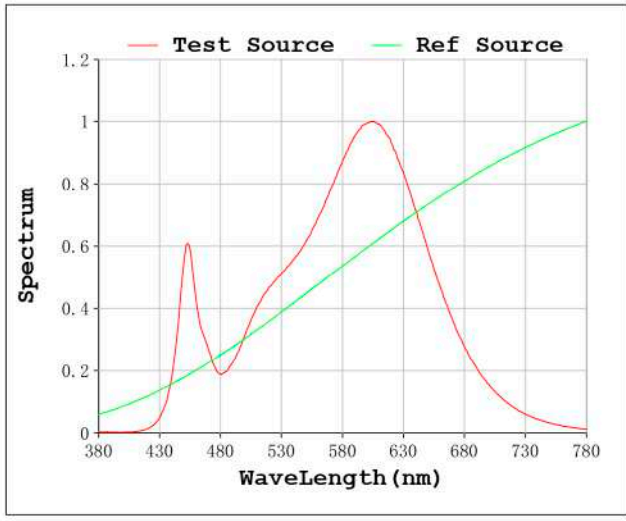
V = 23.998 V I = 0.3935 A P = 9.443 W PF = 1.000

Status: Integral T = 850 ms Ip = 41687 (64%)

Model:Ecoled Élite 10 3000K
 Tester:Sergio Carneros
 Temperature:24Deg
 Manufacturer:Luz Negra S.L

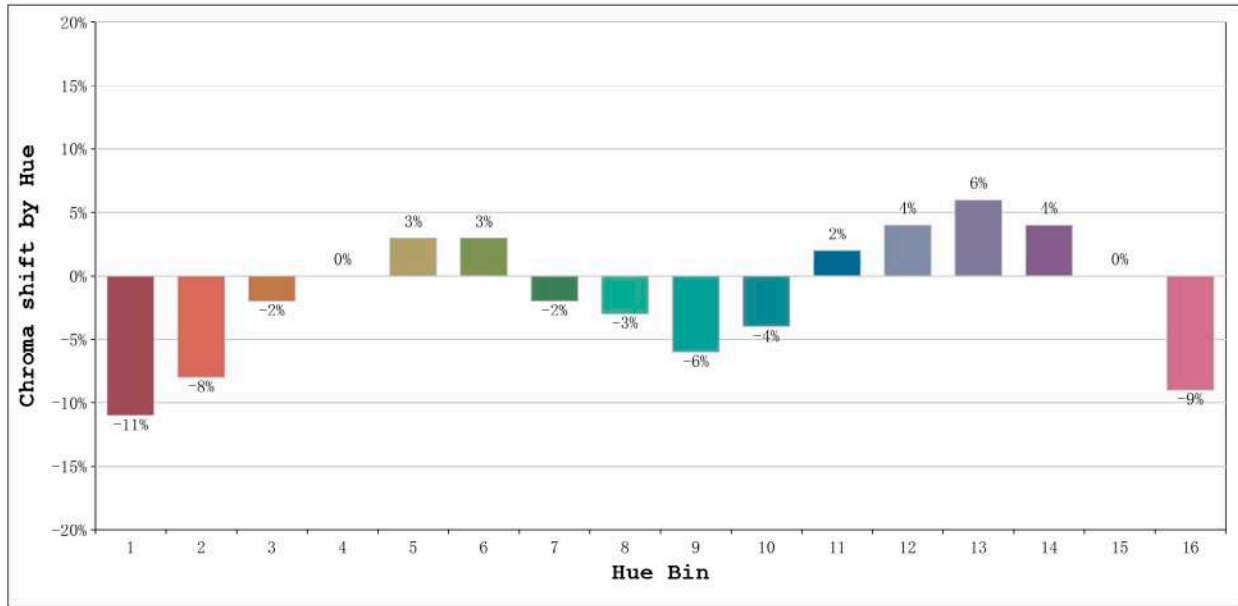
Number: 31.010
 Date:25-5-2021
 Humidity:57%
 Remarks:100cm de tira flexible

Rf: 82 CCT: 3025 K u': 0.2498
Rg: 96 Duv: -0.0004 v': 0.5203



Model:Ecoled Élite 10 3000K
Tester:Sergio Carneros
Temperature:24Deg
Manufacturer:Luz Negra S.L

Number: 31.010
Date:25-5-2021
Humidity:57%
Remarks:100cm de tira flexible



Hue Bin	Hue Angle	Rf	Graphic shift(%)	
			Chroma	Hue
1	0.0° - 22.5°	75	-11	0
2	22.5° - 45.0°	77	-8	7
3	45.0° - 67.5°	74	-2	12
4	67.5° - 90.0°	87	0	6
5	90.0° - 112.5°	92	3	4
6	112.5° - 135.0°	92	3	-1
7	135.0° - 157.5°	86	-2	-6
8	157.5° - 180.0°	91	-3	-1
9	180.0° - 202.5°	86	-6	3
10	202.5° - 225.0°	81	-4	9
11	225.0° - 247.5°	81	2	12
12	247.5° - 270.0°	81	4	6
13	270.0° - 292.5°	84	6	-10
14	292.5° - 315.0°	71	4	-16
15	315.0° - 337.5°	82	0	-11
16	337.5° - 360.0°	71	-9	-12

Model:Ecoled Élite 10 3000K
 Tester:Sergio Carneros
 Temperature:24Deg
 Manufacturer:Luz Negra S.L

Number: 31.010
 Date:25-5-2021
 Humidity:57%
 Remarks:100cm de tira flexible