

ALTA LUMINOSIDAD

MÁLAGA FULL SPECTRUM

TIRAS FLEXIBLES

Ref: 33.200
Ref: 33.199

4000°K
2700°K

Tira flexible serie "PRO"

IP20 con 238 leds/metro 2835SMD.

Requiere uso de led profile para disipación.

Cinta térmica disipadora incluida.

PCB 10mm

Uso diario máximo recomendado: 18h

Conexión máxima en circuito abierto: 5m

Conexión máxima en circuito cerrado: 10m

Vida útil: 50.000h*

*En función de la disipación del perfil, de las horas diarias trabajadas y de la temperatura externa ambiental de trabajo.



potencia



120°



voltaje



IP20



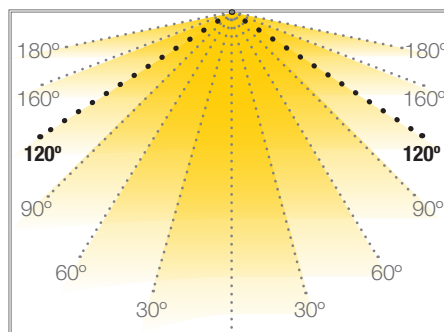
29,4mm



interior

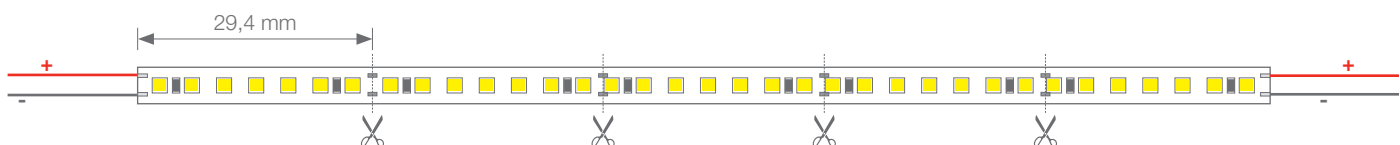
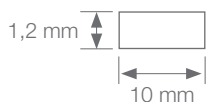


trabajo



Potencia (W)	23W/m
Voltaje (V)	24V
Tipo Led	SMD2835
Lumens (4000°K)	2400 Lm/m
Lumens (2700°K)	1955 Lm/m
Emisión de luz	120°
Estanqueidad (IP)	IP20
CRI	>97
Nº leds/m	238
Medidas	5000x10x1.2mm
Cortable	cada 29,4mm
PCB	10mm
Temperatura trabajo	-20°C / +40°C
Apto para	interior
Embalaje	1 rollo/5m
Garantía	3 años

Aprobado por: 

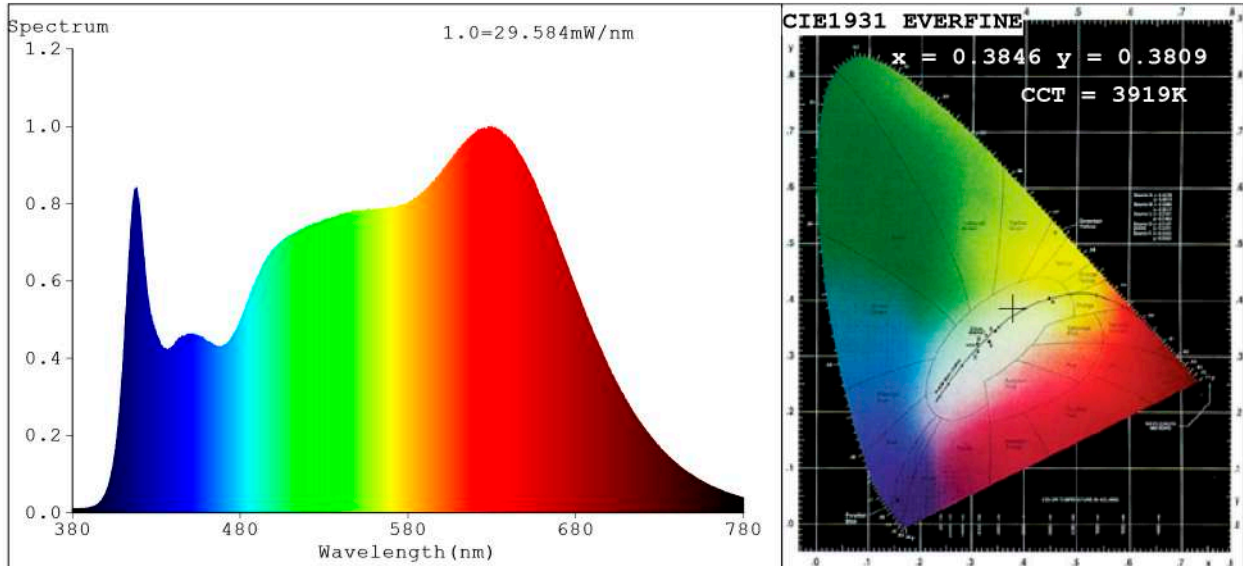


BARCELONA
C/ Carles Buhigues, 13
08420 Canovelles
Info@luznegra.net
Tel: +34 938 402 598

MADRID
C/ Adaptación, 27
28906 Getafe
centro@luznegra.net
Tel: +34 916 416 081

PARIS
113 Avenue Joffre
77450 Esbly
france@luznegra.net
Tel: +33 (0) 160 426 585

Spectrum Test Report



Color Parameters:

Chromaticity Coordinate: $x=0.3846$ $y=0.3809$ / $u'=0.2262$ $v'=0.5040$
 CCT=3919K (Duv=0.0007) Dominant WL:Ld =579.0nm Purity=29.8%
 Ratio:R=20.9% G=74.5% B=4.6%; Peak WL:Lp=629.6nm FWHM=206.9nm
 Render Index:Ra=97.6 CRI=96.9 TM30:Rf=95 Rg=101
 R1 =98 R2 =99 R3 =97 R4 =95 R5 =97 R6 =99 R7 =98
 R8 =98 R9 =97 R10=98 R11=94 R12=91 R13=99 R14=98 R15=98

Photo Parameters:

Flux = 1705 lm Eff. : 84.01 lm/W Fe = 6.464 W Scotopic:3117.9 S/P:1.8288

Electrical parameters:

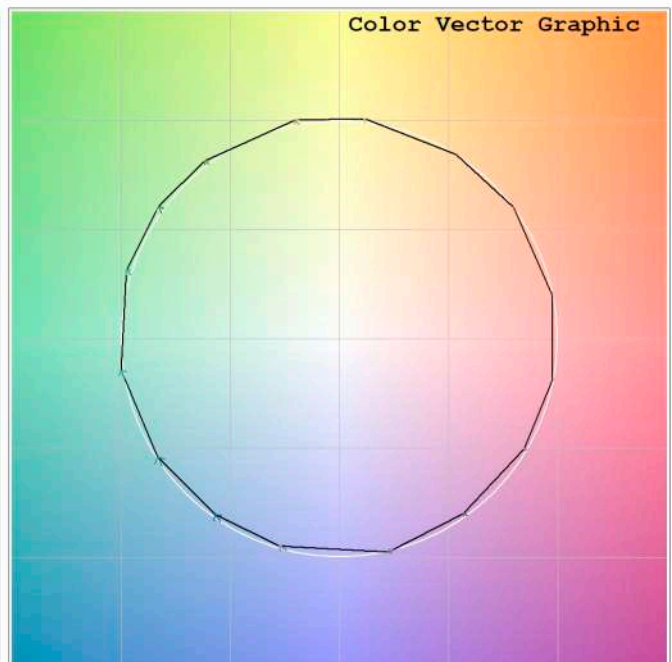
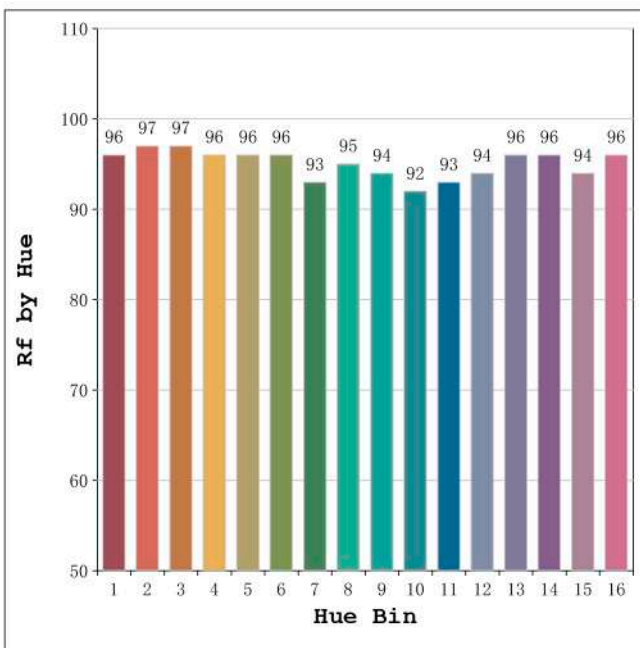
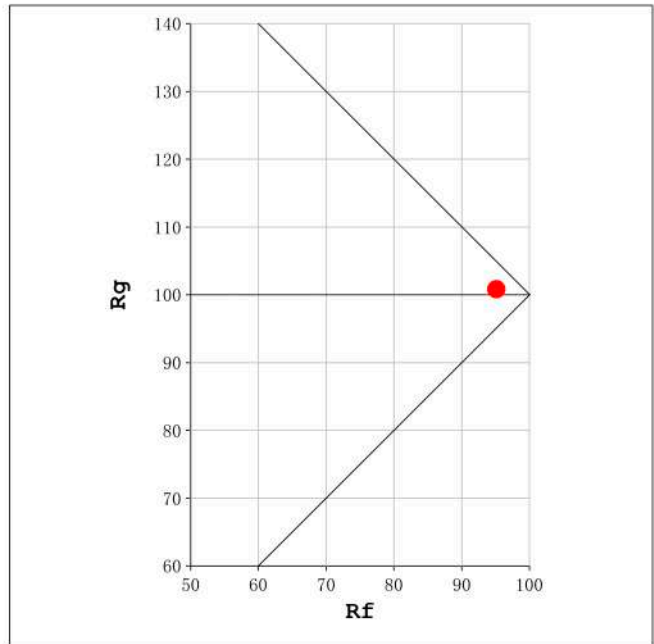
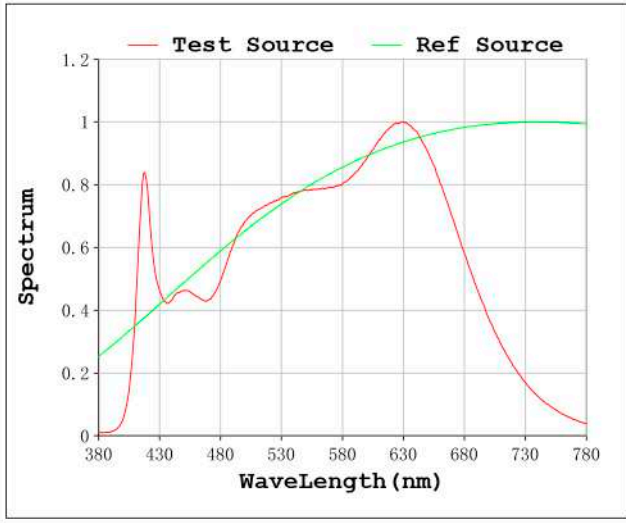
V = 23.998 V I = 0.8457 A P = 20.30 W PF = 1.000

Status: Integral T = 977 ms Ip = 54249 (83%)

Model:Ecoledd Málaga 4000K
 Tester:Sergio Carneros
 Temperature:20Deg
 Manufacturer:Luz Negra

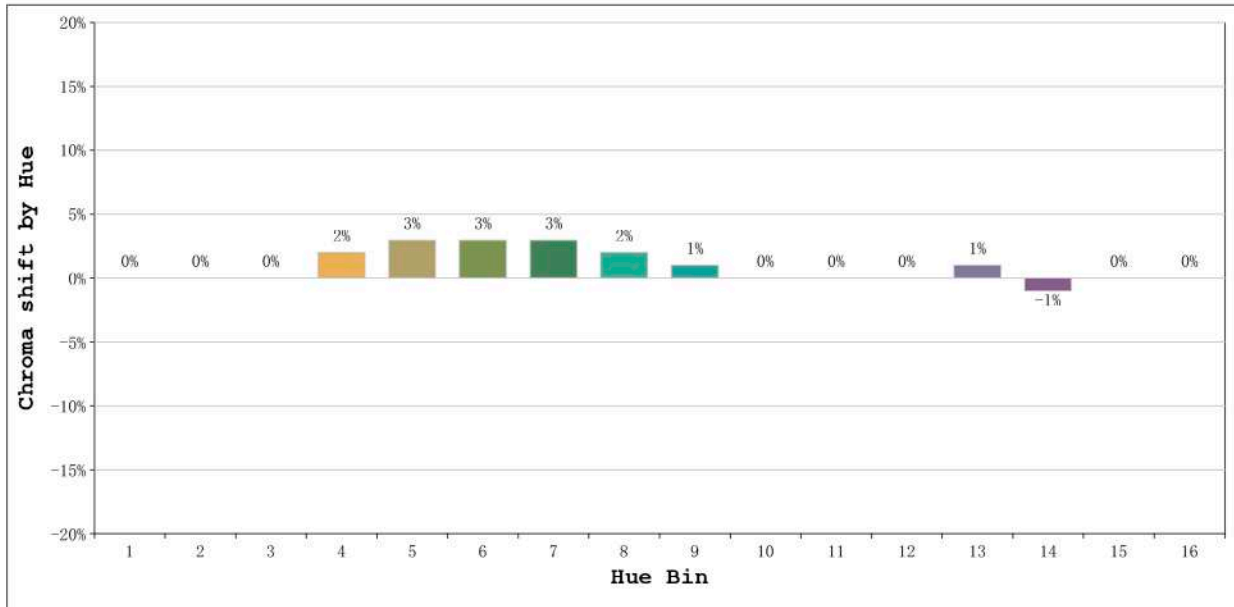
Number: 33.200
 Date:2022-06-07 15:07:57
 Humidity:57%
 Remarks:100cm de tira flexible

Rf: 95 CCT: 3919 K u': 0.2262
Rg: 101 Duv: 0.0007 v': 0.5040



Model:Ecoledd Málaga 4000K
Tester:Sergio Carneros
Temperature:20Deg
Manufacturer:Luz Negra

Number: 33.200
Date:2022-06-07 15:07:57
Humidity:57%
Remarks:100cm de tira flexible

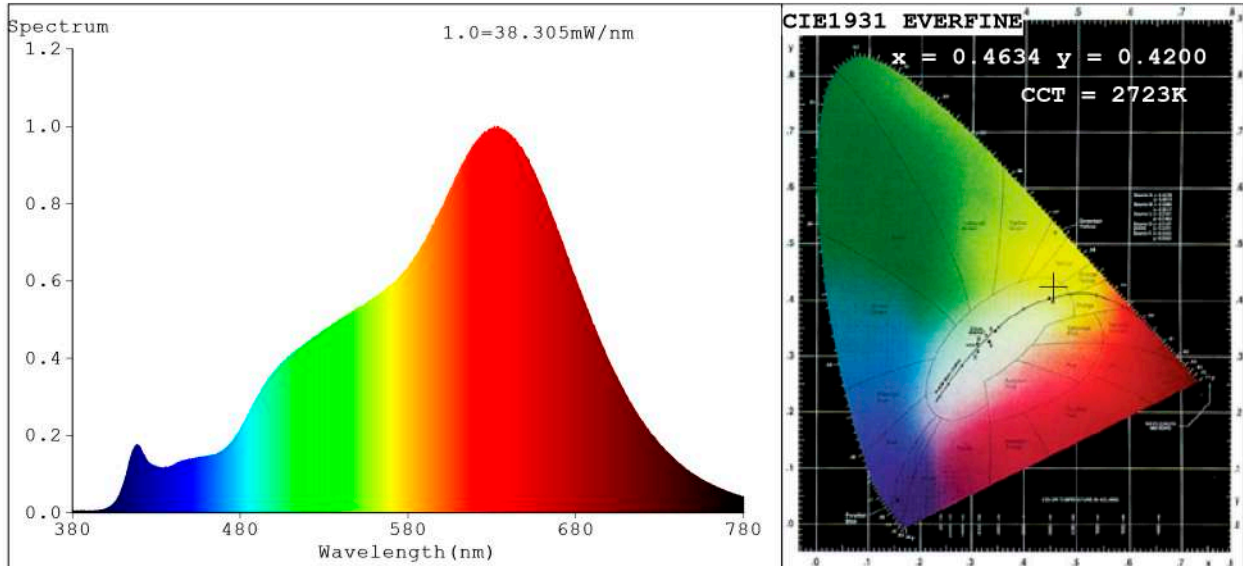


Hue Bin	Hue Angle	Rf	Graphic shift(%)	
			Chroma	Hue
1	0.0° - 22.5°	96	0	0
2	22.5° - 45.0°	97	0	0
3	45.0° - 67.5°	97	0	0
4	67.5° - 90.0°	96	2	1
5	90.0° - 112.5°	96	3	1
6	112.5° - 135.0°	96	3	1
7	135.0° - 157.5°	93	3	-1
8	157.5° - 180.0°	95	2	-1
9	180.0° - 202.5°	94	1	-3
10	202.5° - 225.0°	92	0	-4
11	225.0° - 247.5°	93	0	-3
12	247.5° - 270.0°	94	0	-3
13	270.0° - 292.5°	96	1	-2
14	292.5° - 315.0°	96	-1	0
15	315.0° - 337.5°	94	0	0
16	337.5° - 360.0°	96	0	0

Model:Ecoledd Málaga 4000K
 Tester:Sergio Carneros
 Temperature:20Deg
 Manufacturer:Luz Negra

Number: 33.200
 Date:2022-06-07 15:07:57
 Humidity:57%
 Remarks:100cm de tira flexible

Spectrum Test Report



Color Parameters:

Chromaticity Coordinate: $x=0.4634$ $y=0.4200$ / $u'=0.2606$ $v'=0.5314$
 CCT=2723K (Duv=0.0031) Dominant WL:Ld =583.1nm Purity=65.2%
 Ratio:R=27.0% G=70.2% B=2.7%; Peak WL:Lp=633.2nm FWHM=150.0nm
 Render Index:Ra=97.6 CRI=96.3 TM30:Rf=94 Rg=97
 R1 =99 R2 =99 R3 =97 R4 =96 R5 =98 R6 =97 R7 =98
 R8 =96 R9 =88 R10=98 R11=92 R12=93 R13=99 R14=98 R15=97

Photo Parameters:

Flux = 1645 lm Eff. : 79.19 lm/W Fe = 6.239 W Scotopic:2202.2 S/P:1.3387

Electrical parameters:

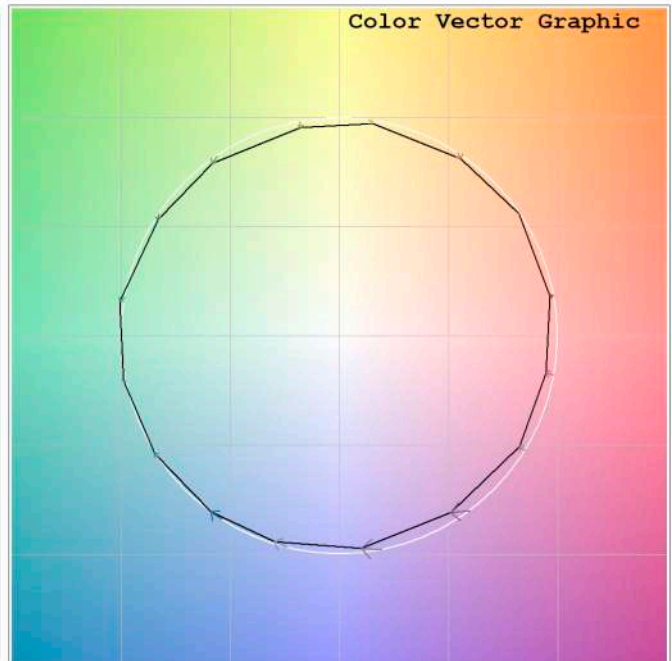
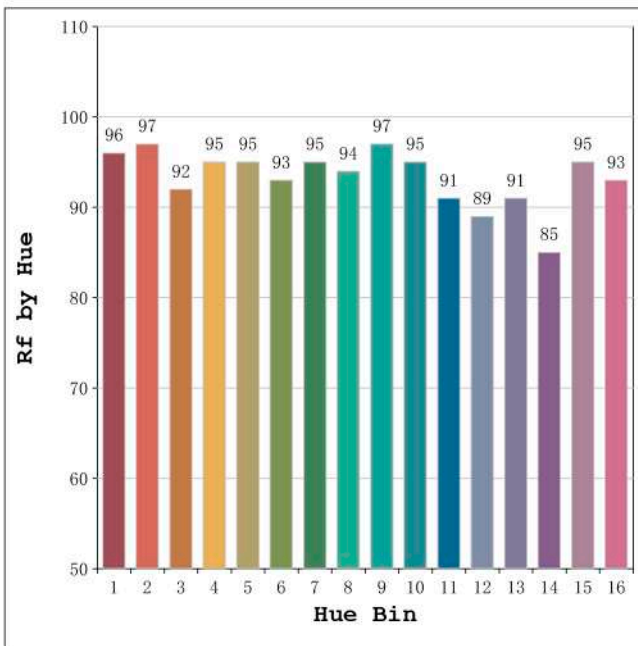
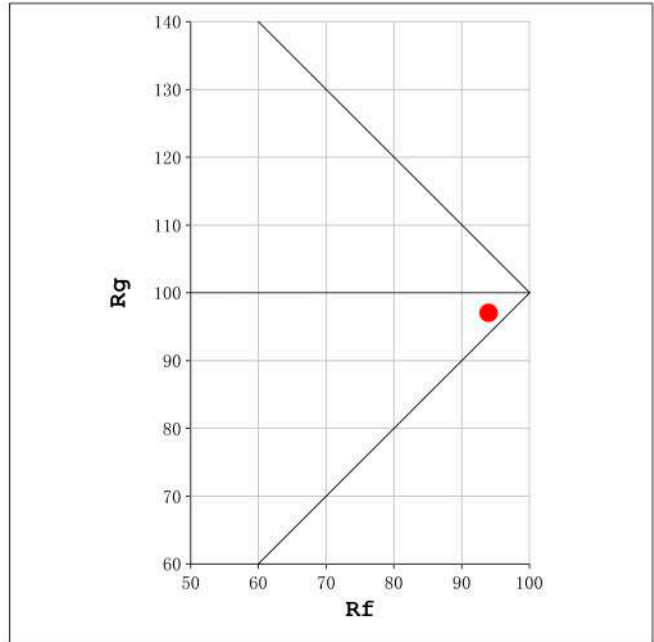
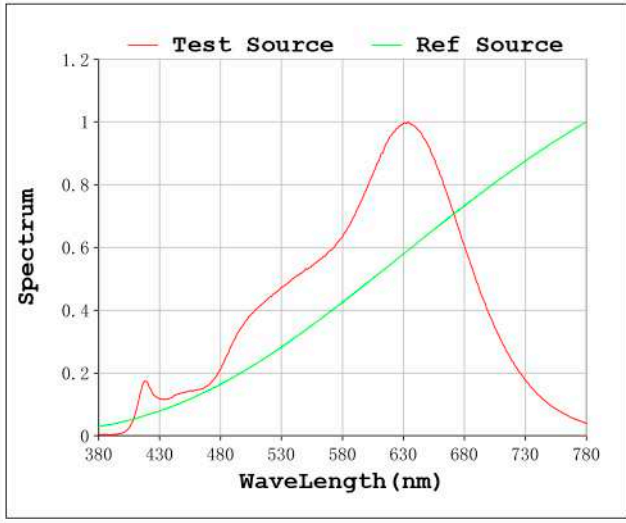
V = 23.998 V I = 0.8656 A P = 20.77 W PF = 1.000

Status: Integral T = 488 ms Ip = 33706 (51%)

Model:Ecoledd Málaga 2700K
 Tester:Sergio Carneros
 Temperature:20Deg
 Manufacturer:Luz Negra

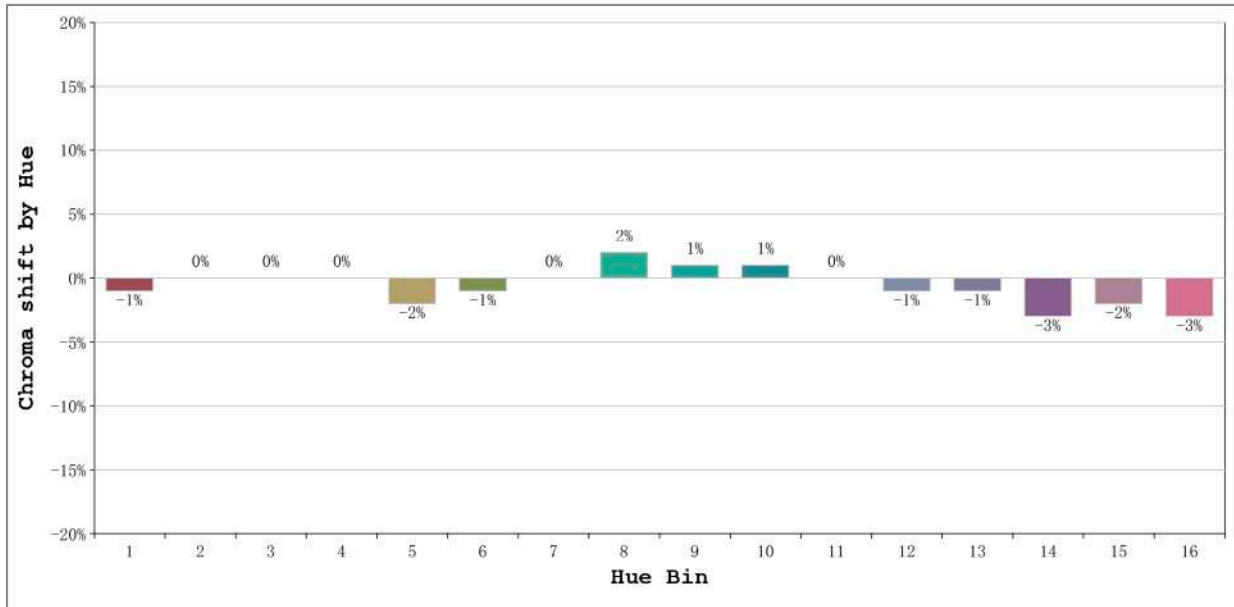
Number: 33.199
 Date:2022-06-07 15:34:16
 Humidity:57%
 Remarks:100cm de tira flexible

Rf: 94 CCT: 2723 K u': 0.2606
Rg: 97 Duv: 0.0031 v': 0.5314



Model:Ecoledd Málaga 2700K
Tester:Sergio Carneros
Temperature:20Deg
Manufacturer:Luz Negra

Number: 33.199
Date:2022-06-07 15:34:16
Humidity:57%
Remarks:100cm de tira flexible



Hue Bin	Hue Angle	Rf	Graphic shift(%)	
			Chroma	Hue
1	0.0° - 22.5°	96	-1	0
2	22.5° - 45.0°	97	0	0
3	45.0° - 67.5°	92	0	-2
4	67.5° - 90.0°	95	0	-1
5	90.0° - 112.5°	95	-2	0
6	112.5° - 135.0°	93	-1	3
7	135.0° - 157.5°	95	0	2
8	157.5° - 180.0°	94	2	3
9	180.0° - 202.5°	97	1	0
10	202.5° - 225.0°	95	1	-2
11	225.0° - 247.5°	91	0	-5
12	247.5° - 270.0°	89	-1	-5
13	270.0° - 292.5°	91	-1	-8
14	292.5° - 315.0°	85	-3	-7
15	315.0° - 337.5°	95	-2	0
16	337.5° - 360.0°	93	-3	0

Model:Ecoledd Málaga 2700K
 Tester:Sergio Carneros
 Temperature:20Deg
 Manufacturer:Luz Negra

Number: 33.199
 Date:2022-06-07 15:34:16
 Humidity:57%
 Remarks:100cm de tira flexible