

OPTIC 6 L

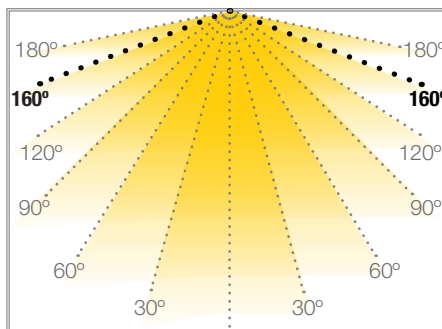
MODULOS LEDS

Ref: 43.019

7000°K

Se fija con cinta adhesiva.

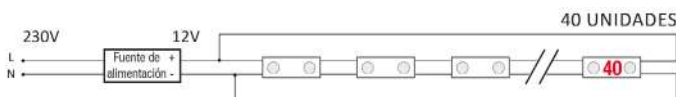
Cadena de 20 unidades.



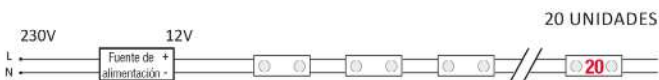
Potencia (W)	3W
Voltaje (V)	12V
Tipo Led	SMD
Lumens (7000°K)	260 Lm
Regulación	si, mediante dimmer
Emisión de luz	160°
Estanqueidad (IP)	IP65
Medidas	75x48x6.5mm
Temperatura trabajo	-20°C / +40°C
Fijación	cinta adhesiva
Embalaje	20 und
Garantía	2 años

Aprobado por:

NÚMERO MÁXIMO DE MÓDULOS conectados con CIRCUITO CERRADO



NÚMERO MÁXIMO DE MÓDULOS conectados con CIRCUITO ABIERTO

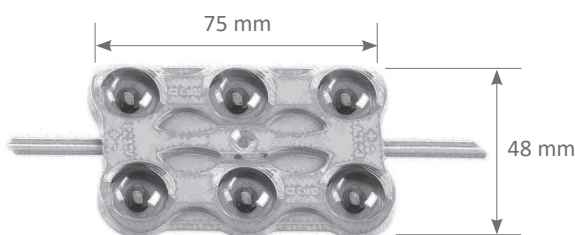


NÚMERO MÁXIMO DE MÓDULOS a conectar con una Fuente de alimentación

Datos basados dejando un margen de seguridad del 15%

Marca MEANWELL IP67 (2 años de garantía)

Fuente de alimentación	Módulos a colocar
39.005 (18W)	5 unidades
39.006 (36W)	10 unidades
39.007 (60W)	17 unidades
39.008 (100W)	28 unidades
39.009 (120W)	34 unidades

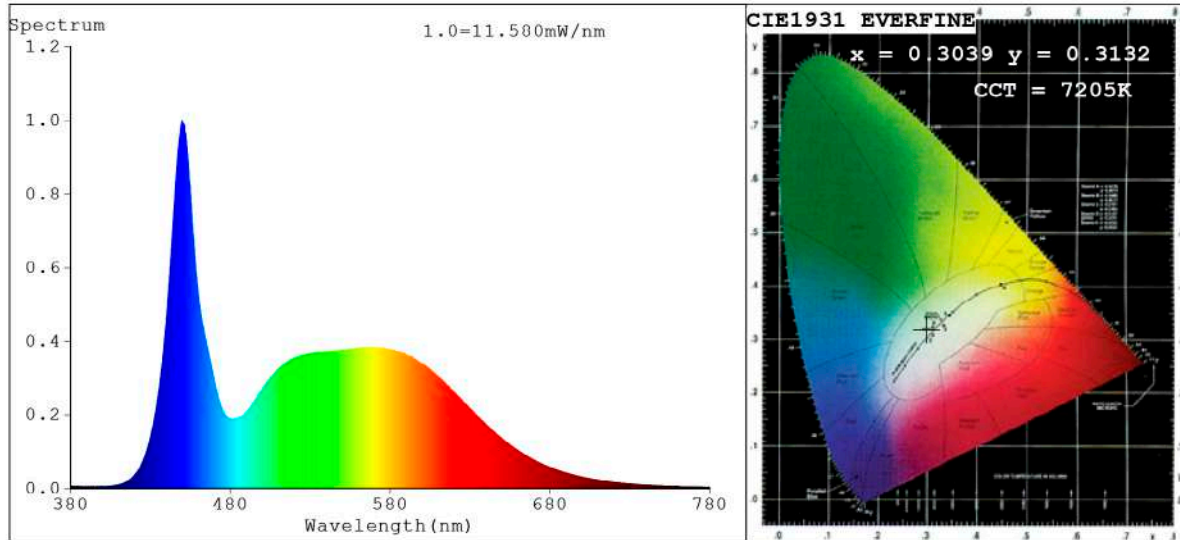


BARCELONA
C/ Carles Buigues, 13
08420 Canovelles
Info@luznegra.net
Tel: +34 938 402 598

MADRID
C/ Adaptación, 27
28906 Getafe
centro@luznegra.net
Tel: +34 916 416 081

PARIS
113 Avenue Joffre
77450 Esbly
france@luznegra.net
Tel: +33 (0) 160 426 585

Spectrum Test Report



Color Parameters:

Chromaticity Coordinate: $x=0.3039$ $y=0.3132/u'=0.1977$ $v'=0.4583$
 CCT=7205K (Duv=-0.0004) Dominant WL:Ld =482.3nm Purity=11.7%
 Ratio:R=13.1% G=81.1% B=5.8%;;Peak WL:Lp=449.8nm FWHM=20.1nm
 Render Index:Ra=83.3 CRI=75.9 TM30:Rf=80 Rg=95
 R1 =83 R2 =87 R3 =88 R4 =85 R5 =83 R6 =81 R7 =88
 R8 =72 R9 =9 R10=68 R11=84 R12=57 R13=84 R14=94 R15=79

Photo Parameters:

Flux = 287.7 lm Eff. : 4.84 lm/W Fe = 951.3 mW Scotopic:666.09 S/P:2.3151

Electrical parameters:

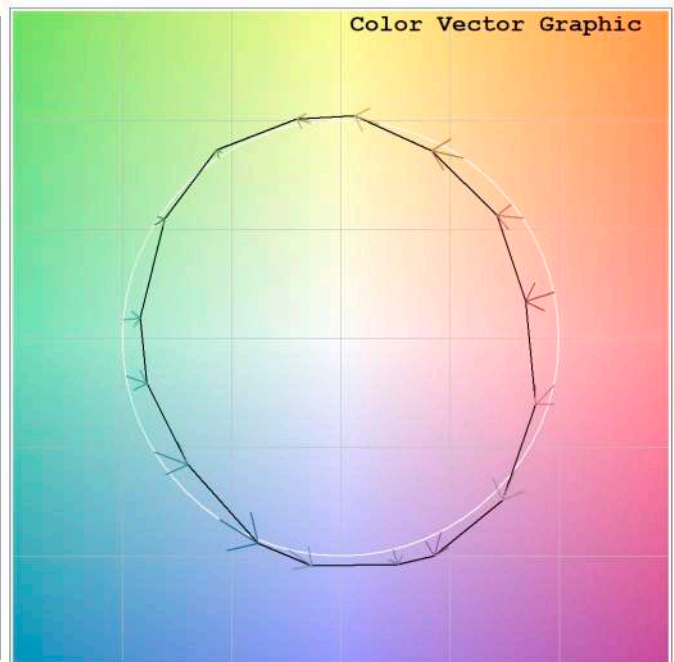
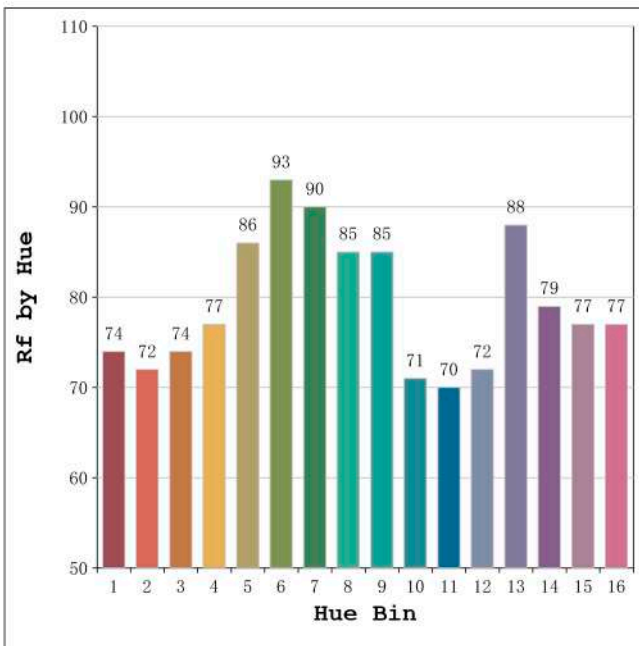
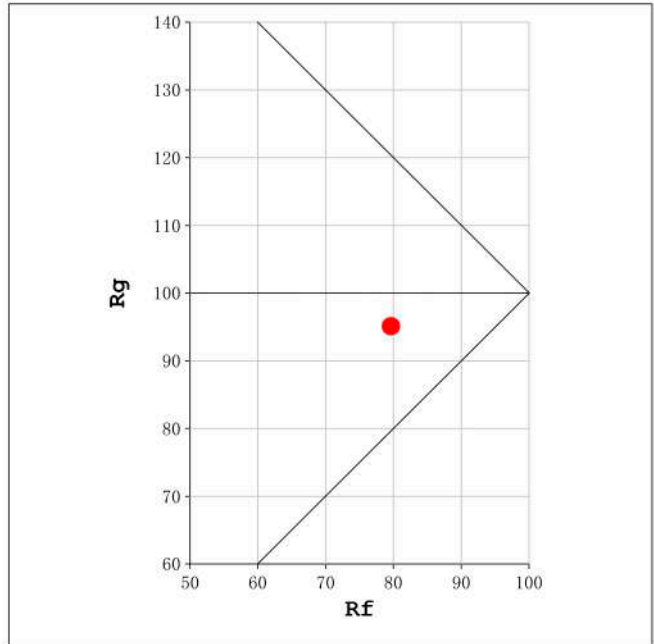
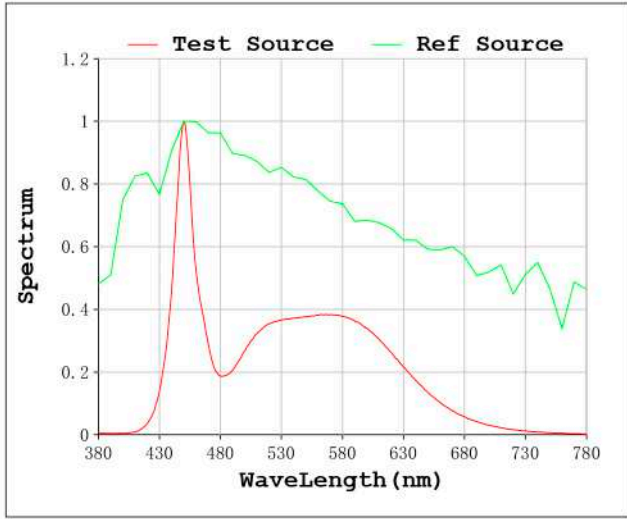
V = 11.999 V I = 4.957 A P = 59.48 W PF = 1.000

Status: Integral T = 3309 ms Ip = 49052 (75%)

Model:Ecoled Optic 6L
 Tester:Sergio Carneros
 Temperature:23Deg
 Manufacturer:Luz Negra S.L

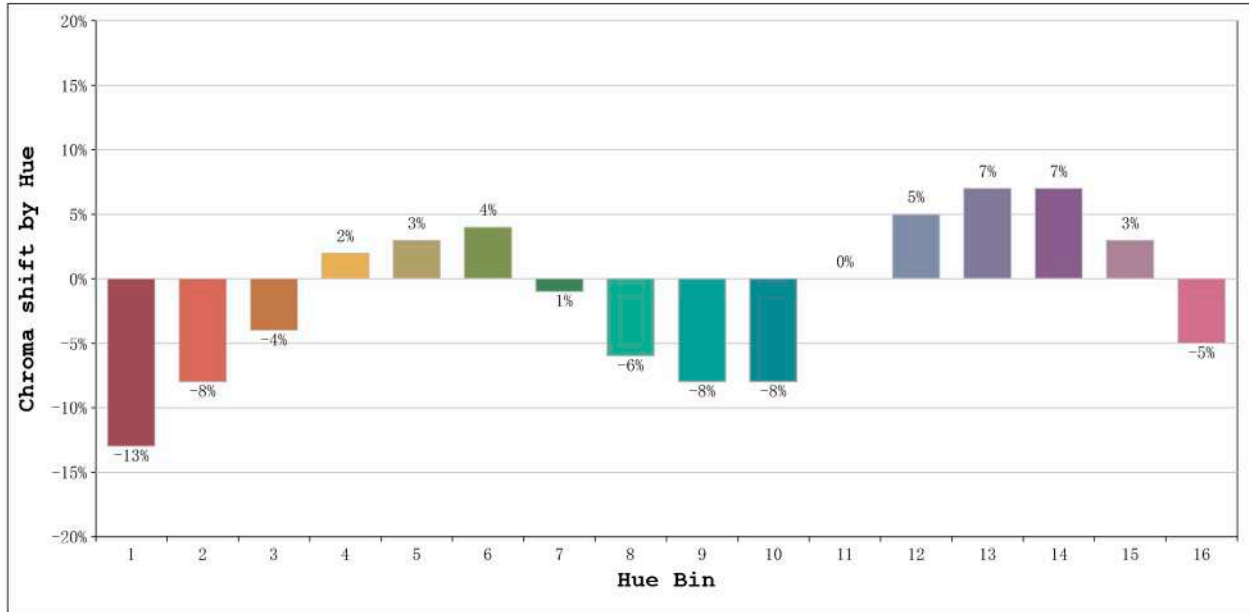
Number: 43.019
 Date:2023-10-03 10:17:22
 Humidity:53%
 Remarks:20 modulos led

Rf: 80 CCT: 7205 K u': 0.1977
Rg: 95 Duv: -0.0004 v': 0.4583



Model:Ecoled Optic 6L
Tester:Sergio Carneros
Temperature:23Deg
Manufacturer:Luz Negra S.L

Number: 43.019
Date:2023-10-03 10:17:22
Humidity:53%
Remarks:20 modulos led



Hue Bin	Hue Angle	Rf	Graphic shift(%)	
			Chroma	Hue
1	0.0° - 22.5°	74	-13	0
2	22.5° - 45.0°	72	-8	8
3	45.0° - 67.5°	74	-4	14
4	67.5° - 90.0°	77	2	12
5	90.0° - 112.5°	86	3	6
6	112.5° - 135.0°	93	4	0
7	135.0° - 157.5°	90	-1	-4
8	157.5° - 180.0°	85	-6	-1
9	180.0° - 202.5°	85	-8	5
10	202.5° - 225.0°	71	-8	13
11	225.0° - 247.5°	70	0	20
12	247.5° - 270.0°	72	5	12
13	270.0° - 292.5°	88	7	1
14	292.5° - 315.0°	79	7	-8
15	315.0° - 337.5°	77	3	-14
16	337.5° - 360.0°	77	-5	-9

Model:Ecoled Optic 6L
Tester:Sergio Carneros
Temperature:23Deg
Manufacturer:Luz Negra S.L

Number: 43.019
Date:2023-10-03 10:17:22
Humidity:53%
Remarks:20 modulos led