

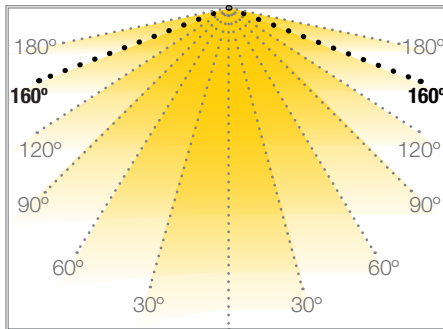
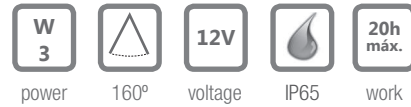
## OPTIC 6 L

## LEDS MODULES

Ref: 43.019

7000°K

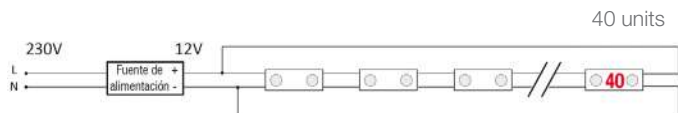
Fixed with adhesive tape.  
Strip with 20 units.



Power (W)	3W
Voltage (V)	12V
Led type	SMD
Lumens (7000°K)	260 Lm
Regulation	yes, via dimmer
Light emission	160°
Waterproofing	IP65
Measurements	75x48x6.5mm
Working temperature	-20°C / +40°C
Fixing	adhesive tape
Packaging	bag of 20 units
Guarantee	2 years

Aprobado por: 

### MAXIMUM NUMBER OF MODULES which can be connected with a CLOSED CIRCUIT



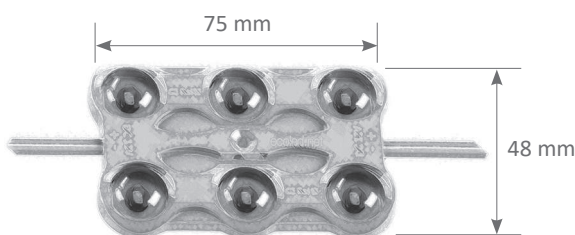
### MAXIMUM NUMBER OF MODULES which can be connected to a power supply

Calculated considering a 15% safety margin

Brand MEANWELL IP67 (2 years warranty)

Power supply	Numbers of modules
39.005 (18W)	5 units
39.006 (36W)	10 units
39.007 (60W)	17 units
39.008 (100W)	28 units
39.009 (120W)	34 units

### MAXIMUM NUMBER OF MODULES which can be connected with an OPEN CIRCUIT

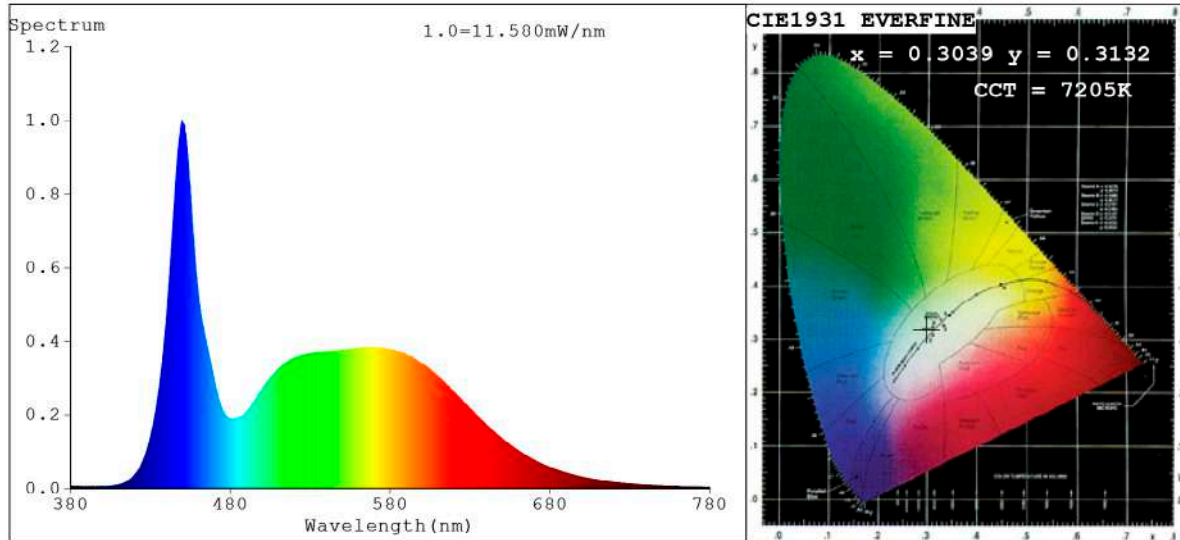


**BARCELONA**  
C/ Carles Buhigues, 13  
08420 Canovelles  
Info@luznegra.net  
Tel: +34 938 402 598

**MADRID**  
C/ Adaptación, 27  
28906 Getafe  
centro@luznegra.net  
Tel: +34 916 416 081

**PARIS**  
113 Avenue Joffre  
77450 Esbly  
france@luznegra.net  
Tel: +33 (0) 160 426 585

**Spectrum Test Report**



**Color Parameters:**

Chromaticity Coordinate:  $x=0.3039$   $y=0.3132/u'=0.1977$   $v'=0.4583$   
 CCT=7205K (Duv=-0.0004) Dominant WL:Ld =482.3nm Purity=11.7%  
 Ratio:R=13.1% G=81.1% B=5.8%;;Peak WL:Lp=449.8nm FWHM=20.1nm  
 Render Index:Ra=83.3 CRI=75.9 TM30:Rf=80 Rg=95  
 R1 =83 R2 =87 R3 =88 R4 =85 R5 =83 R6 =81 R7 =88  
 R8 =72 R9 =9 R10=68 R11=84 R12=57 R13=84 R14=94 R15=79

**Photo Parameters:**

Flux = 287.7 lm Eff. : 4.84 lm/W Fe = 951.3 mW Scotopic:666.09 S/P:2.3151

**Electrical parameters:**

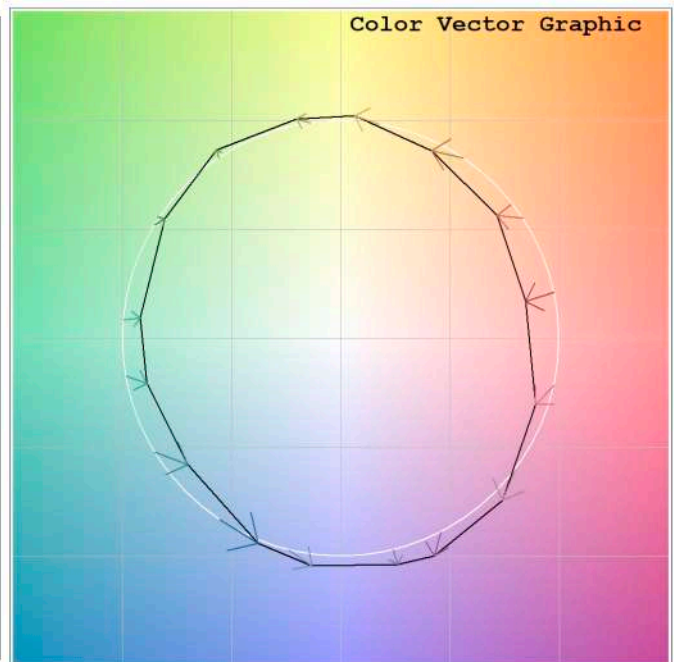
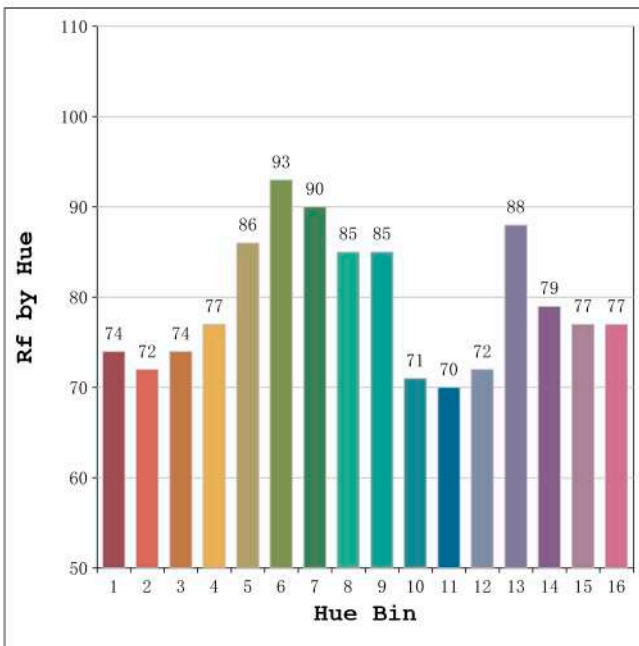
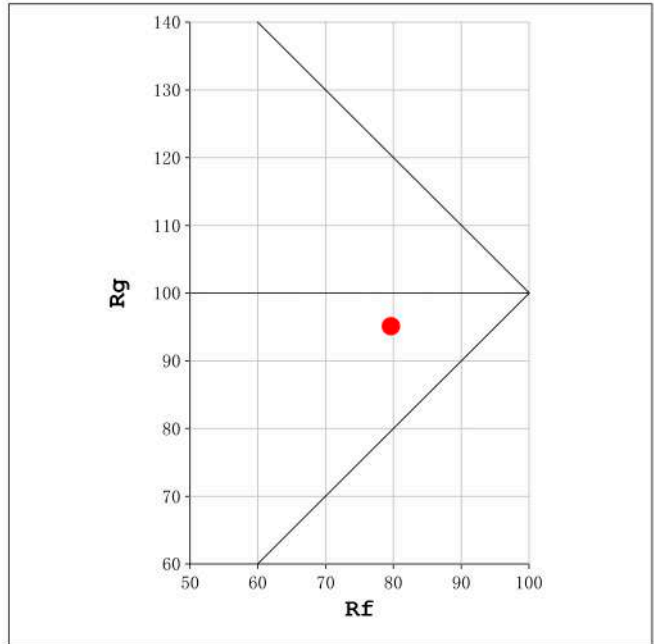
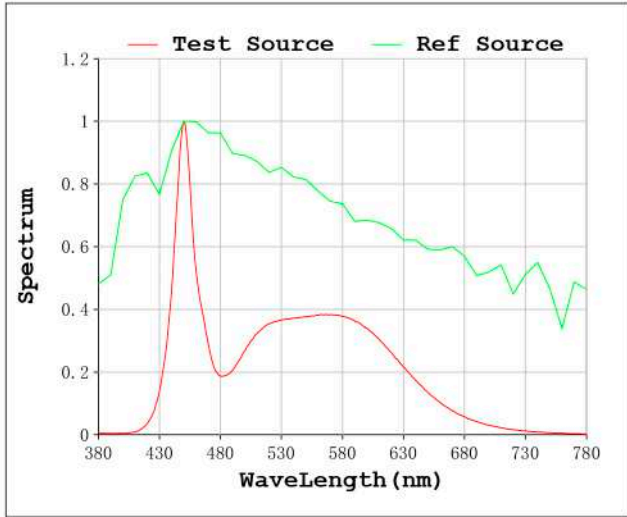
V = 11.999 V I = 4.957 A P = 59.48 W PF = 1.000

Status: Integral T = 3309 ms Ip = 49052 (75%)

Model:Ecoled Optic 6L  
 Tester:Sergio Carneros  
 Temperature:23Deg  
 Manufacturer:Luz Negra S.L

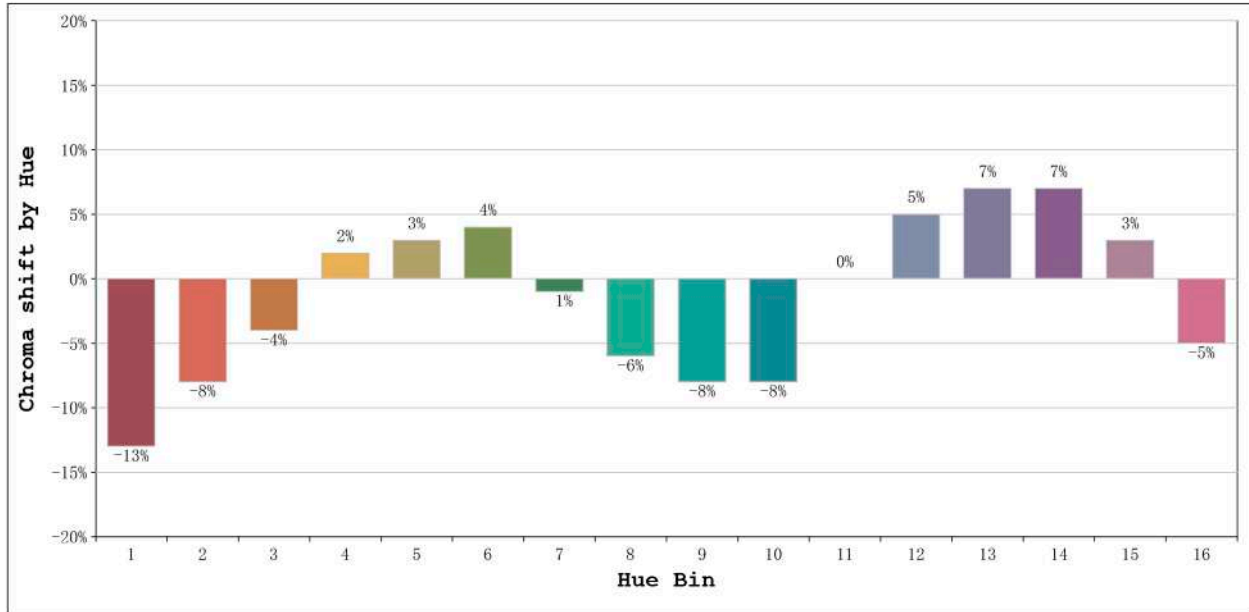
Number: 43.019  
 Date:2023-10-03 10:17:22  
 Humidity:53%  
 Remarks:20 modulos led

Rf: 80      CCT: 7205 K      u': 0.1977  
Rg: 95      Duv: -0.0004      v': 0.4583



Model:Ecoled Optic 6L  
Tester:Sergio Carneros  
Temperature:23Deg  
Manufacturer:Luz Negra S.L

Number: 43.019  
Date:2023-10-03 10:17:22  
Humidity:53%  
Remarks:20 modulos led



Hue Bin	Hue Angle	Rf	Graphic shift(%)	
			Chroma	Hue
1	0.0° - 22.5°	74	-13	0
2	22.5° - 45.0°	72	-8	8
3	45.0° - 67.5°	74	-4	14
4	67.5° - 90.0°	77	2	12
5	90.0° - 112.5°	86	3	6
6	112.5° - 135.0°	93	4	0
7	135.0° - 157.5°	90	-1	-4
8	157.5° - 180.0°	85	-6	-1
9	180.0° - 202.5°	85	-8	5
10	202.5° - 225.0°	71	-8	13
11	225.0° - 247.5°	70	0	20
12	247.5° - 270.0°	72	5	12
13	270.0° - 292.5°	88	7	1
14	292.5° - 315.0°	79	7	-8
15	315.0° - 337.5°	77	3	-14
16	337.5° - 360.0°	77	-5	-9

Model:Ecoled Optic 6L  
Tester:Sergio Carneros  
Temperature:23Deg  
Manufacturer:Luz Negra S.L

Number: 43.019  
Date:2023-10-03 10:17:22  
Humidity:53%  
Remarks:20 modulos led