

BAJA LUMINOSIDAD

Ref: 33.005 4200°K
 Ref: 33.006 3200°K
 Ref: 33.007 2850°K

Tira flexible serie "PREMIUM RETAIL"

IP20 con 56 leds/metro 3014SMD.

Requiere uso de led profile para disipación.

Cinta térmica disipadora incluida.

PCB 10mm

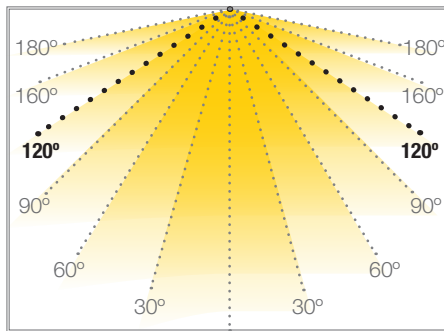
Estabilizador de corriente.

CRI>90

Uso diario máximo recomendado: 18h

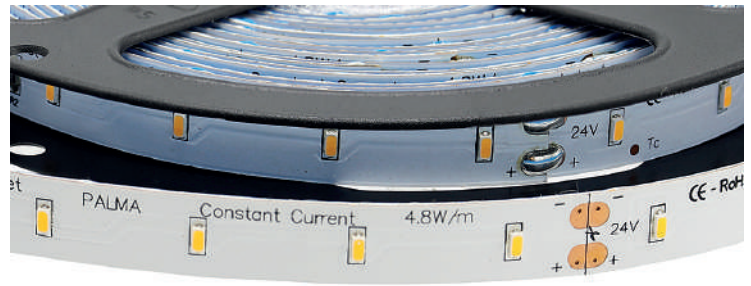
Conexión máxima en circuito abierto: 10m

Conexión máxima en circuito cerrado: 20m



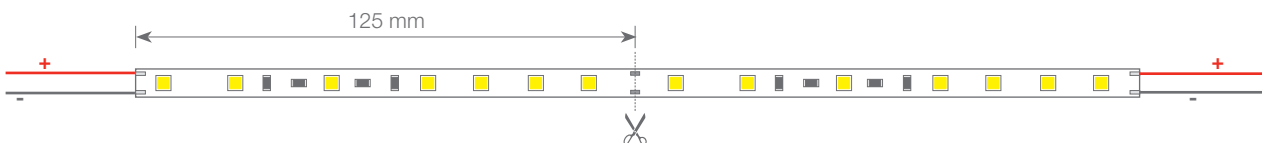
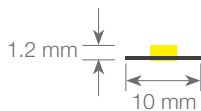
PALMA

TIRAS FLEXIBLES

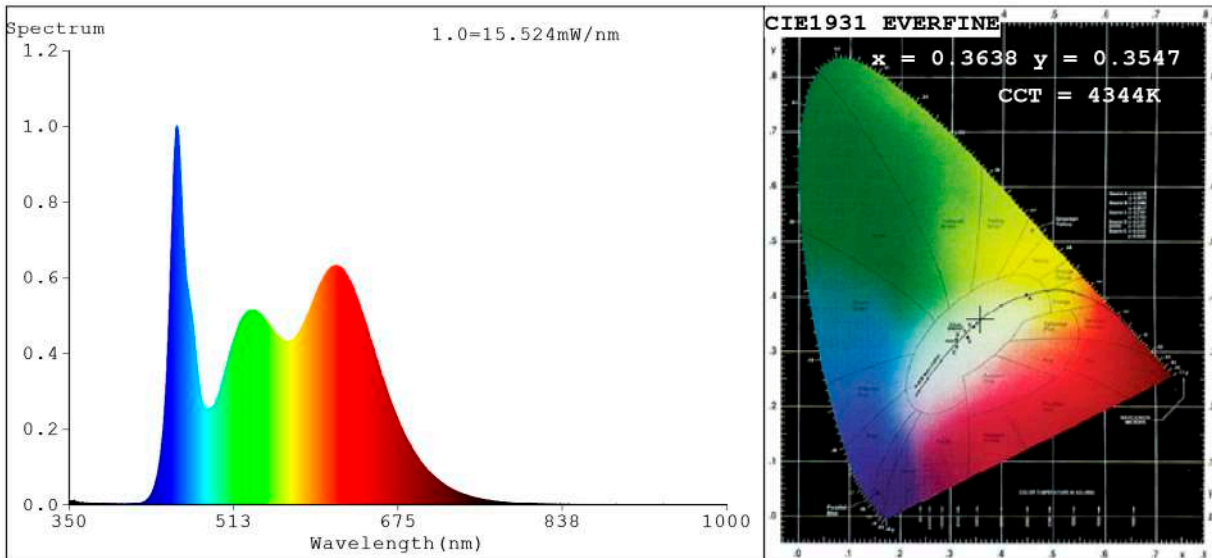


Potencia (W)	4.8W/m
Voltaje (V)	24V
Tipo Led	SMD3014
Lumens (4200°K)	480 Lm/m
Lumens (3200°K)	450 Lm/m
Lumens (2850°K)	430 Lm/m
CRI	>90
Emisión de luz	120°
Estanqueidad (IP)	IP20
Nº leds/m	56
Medidas	5000x10x1.2mm
Cortable	cada 125mm
PCB	10mm
Temperatura trabajo	-40°C / +60°C
Apto para	interior
Embalaje	1 rollo/5m
Garantía	4 años

Aprobado por: 



Spectrum Test Report



Color Parameters:

Chromaticity Coordinate: $x=0.3638$ $y=0.3547$ / $u'=0.2229$ $v'=0.4890$
 CCT=4344K (Duv=-0.0054) Dominant WL: $\lambda_d = 582.5\text{nm}$ Purity=15.6%
 Ratio: R=20.9% G=74.1% B=5.0%; Peak WL: $\lambda_p = 456.4\text{nm}$ FWHM=22.9nm
 Render Index: Ra=94.0 CRI=92.0 TM30:Rf=90 Rg=101
 R1 =93 R2 =95 R3 =98 R4 =96 R5 =94 R6 =91 R7 =92
 R8 =92 R9 =90 R10=94 R11=95 R12=68 R13=92 R14=98 R15=94

Photo Parameters:

Flux = 547.7 lm Eff. : 107.65 lm/W Fe = 1.861 W Scotopic:1093.3 S/P:1.9962

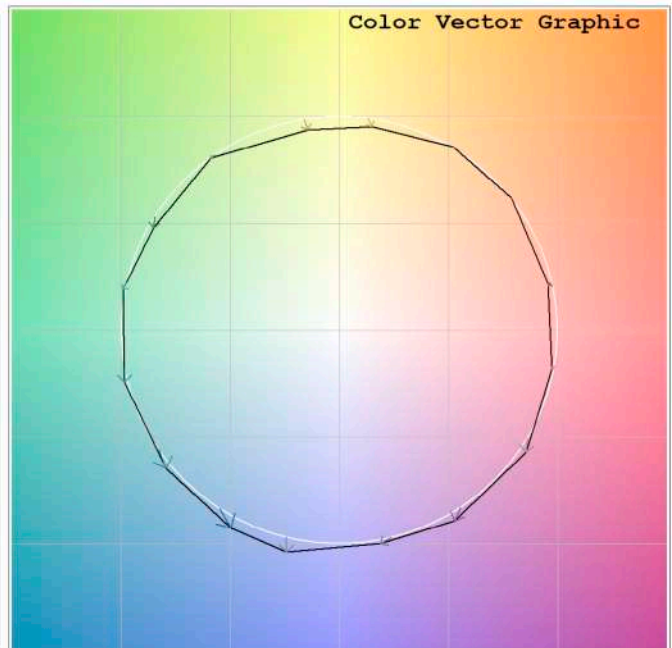
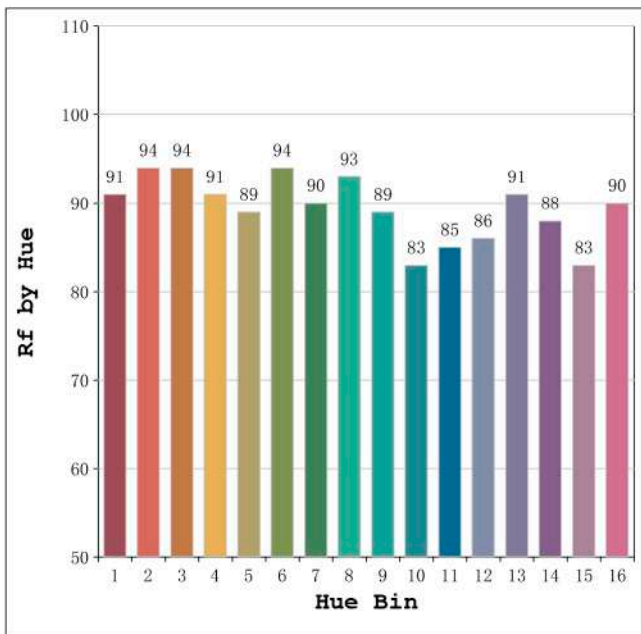
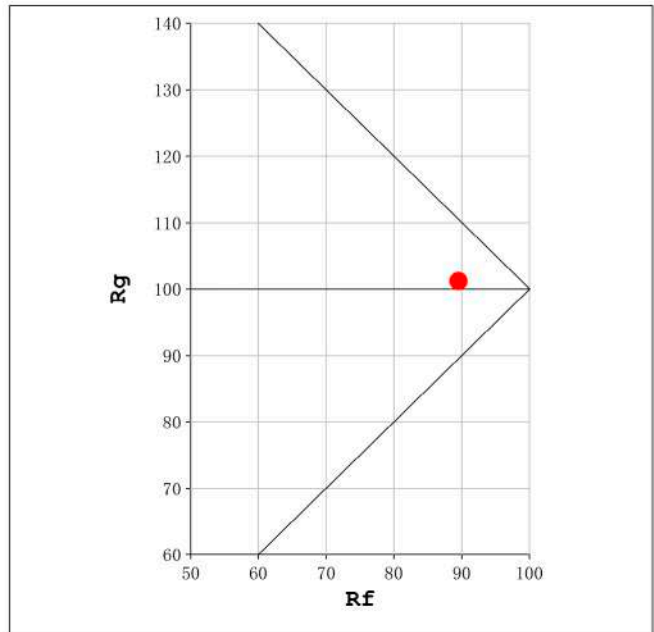
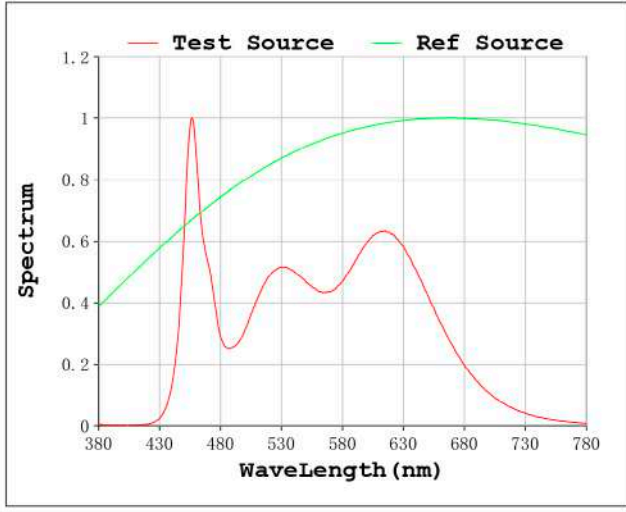
Electrical parameters:

V = 23.998 V I = 0.2120 A P = 5.088 W PF = 1.000

Status: Integral T = 1639 ms Ip = 48004 (73%)

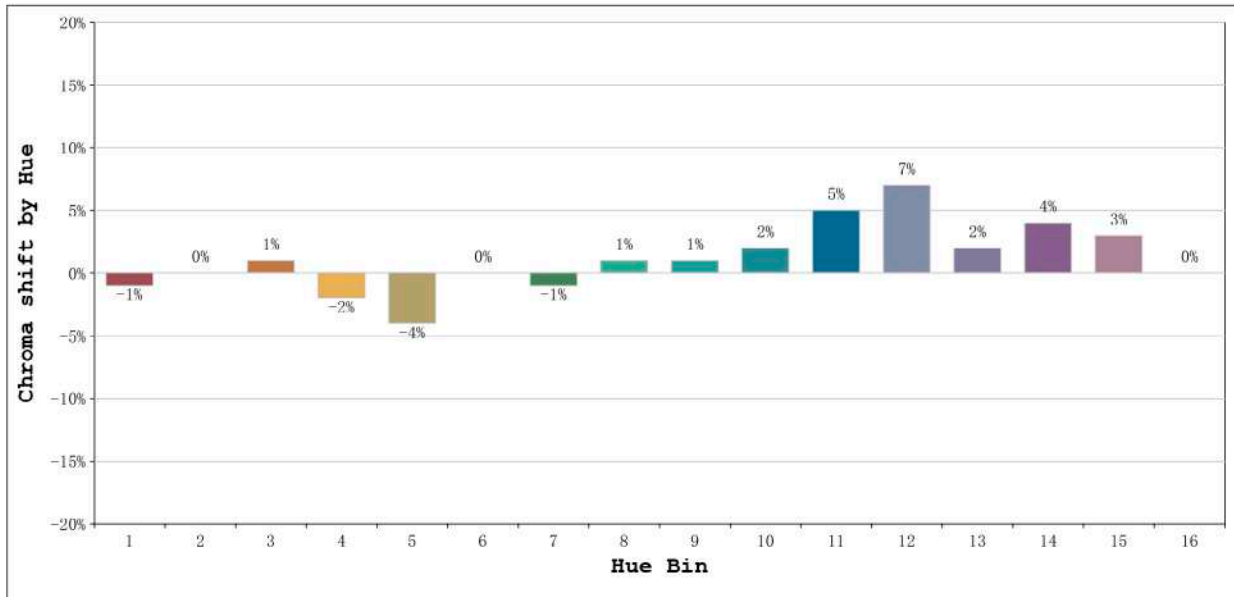
Model: Ecoled Palma 4200K	Number: 33.005
Tester: Sergio Carneros	Date: 25-5-2021
Temperature: 27Deg	Humidity: 57%
Manufacturer: Luz Negra S.L	Remarks: 100cm de tira flexible

Rf: 90 CCT: 4344 K u': 0.2229
Rg: 101 Duv: -0.0054 v': 0.4890



Model:Ecoled Palma 4200K
Tester:Sergio Carneros
Temperature:27Deg
Manufacturer:Luz Negra S.L

Number: 33.005
Date:25-5-2021
Humidity:57%
Remarks:100cm de tira flexible

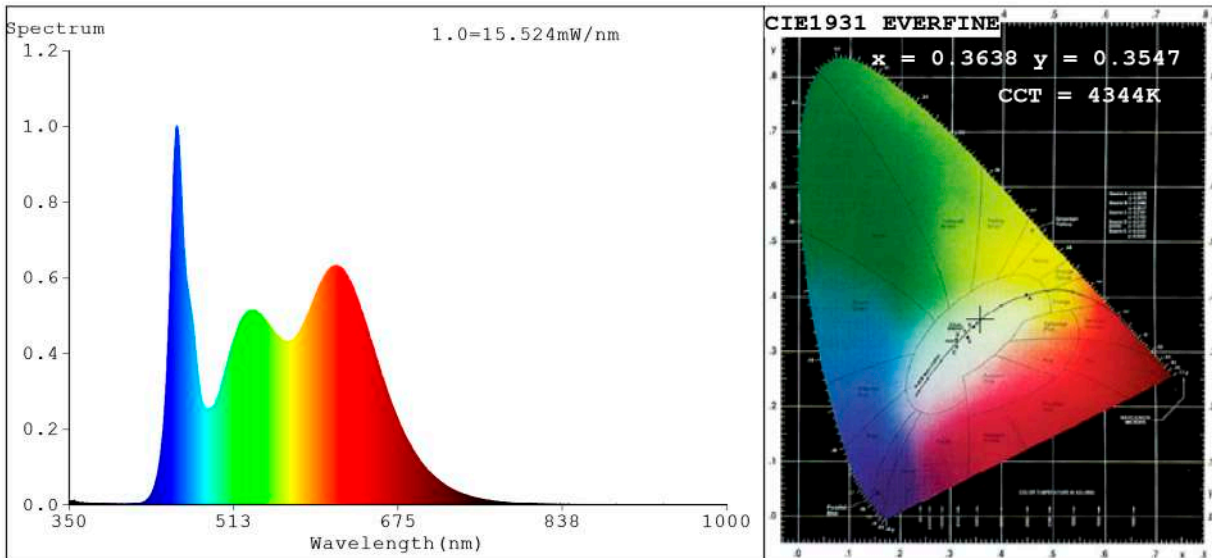


Hue Bin	Hue Angle	Rf	Graphic shift(%)	
			Chroma	Hue
1	0.0° - 22.5°	91	-1	2
2	22.5° - 45.0°	94	0	1
3	45.0° - 67.5°	94	1	0
4	67.5° - 90.0°	91	-2	-2
5	90.0° - 112.5°	89	-4	0
6	112.5° - 135.0°	94	0	2
7	135.0° - 157.5°	90	-1	4
8	157.5° - 180.0°	93	1	3
9	180.0° - 202.5°	89	1	7
10	202.5° - 225.0°	83	2	9
11	225.0° - 247.5°	85	5	9
12	247.5° - 270.0°	86	7	1
13	270.0° - 292.5°	91	2	-4
14	292.5° - 315.0°	88	4	-5
15	315.0° - 337.5°	83	3	-5
16	337.5° - 360.0°	90	0	-1

Model:Ecoled Palma 4200K
 Tester:Sergio Carneros
 Temperature:27Deg
 Manufacturer:Luz Negra S.L

Number: 33.005
 Date:25-5-2021
 Humidity:57%
 Remarks:100cm de tira flexible

Spectrum Test Report



Color Parameters:

Chromaticity Coordinate: $x=0.3638$ $y=0.3547$ / $u'=0.2229$ $v'=0.4890$
 CCT=4344K (Duv=-0.0054) Dominant WL: $\lambda_d = 582.5nm$ Purity=15.6%
 Ratio: R=20.9% G=74.1% B=5.0%; Peak WL: $\lambda_p = 456.4nm$ FWHM=22.9nm
 Render Index: Ra=94.0 CRI=92.0 TM30:Rf=90 Rg=101
 R1 =93 R2 =95 R3 =98 R4 =96 R5 =94 R6 =91 R7 =92
 R8 =92 R9 =90 R10=94 R11=95 R12=68 R13=92 R14=98 R15=94

Photo Parameters:

Flux = 547.7 lm Eff. : 107.65 lm/W Fe = 1.861 W Scotopic:1093.3 S/P:1.9962

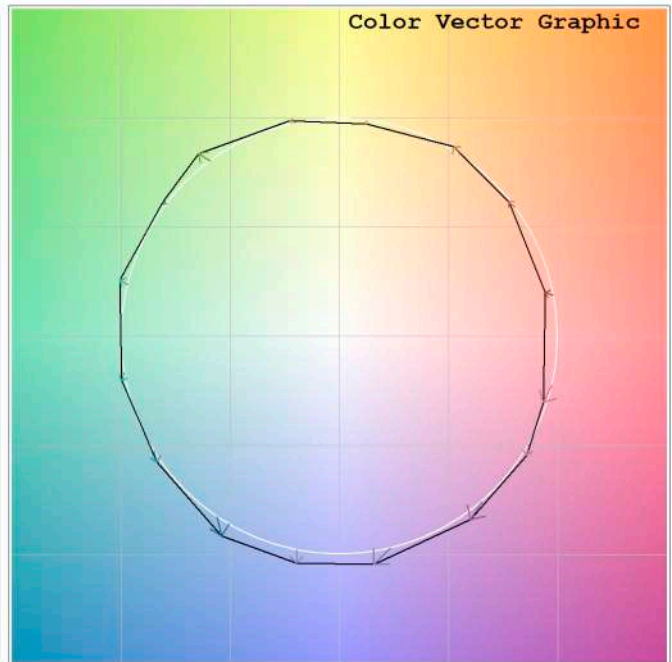
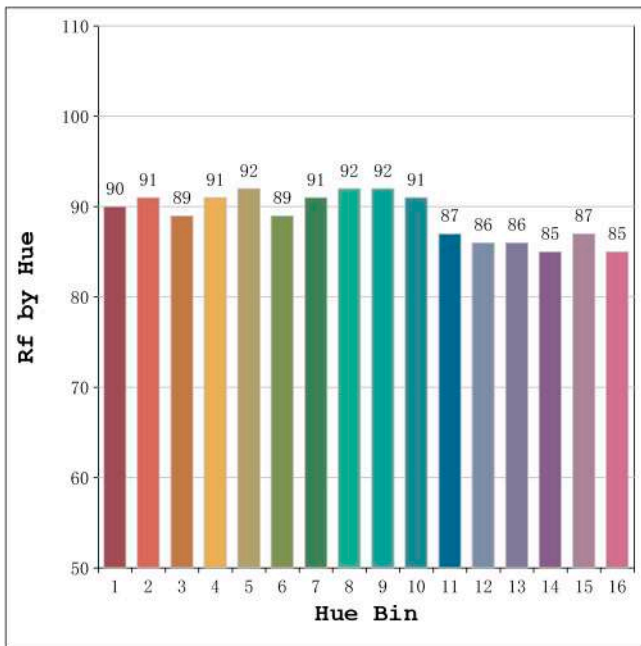
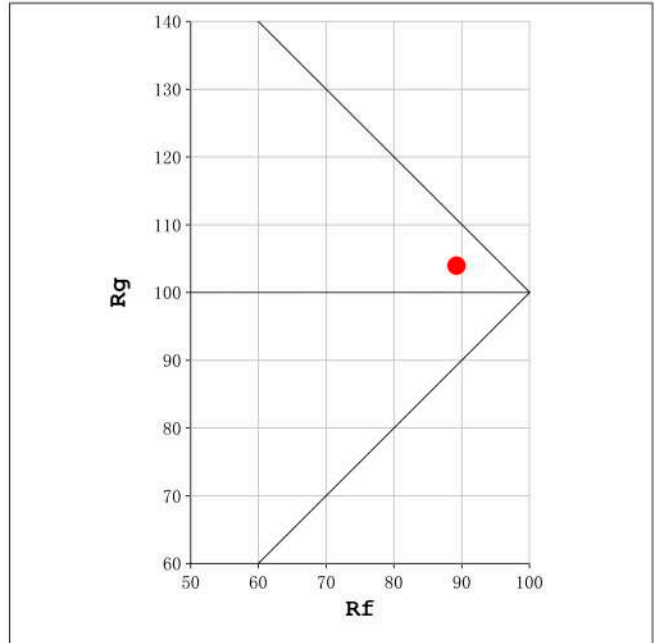
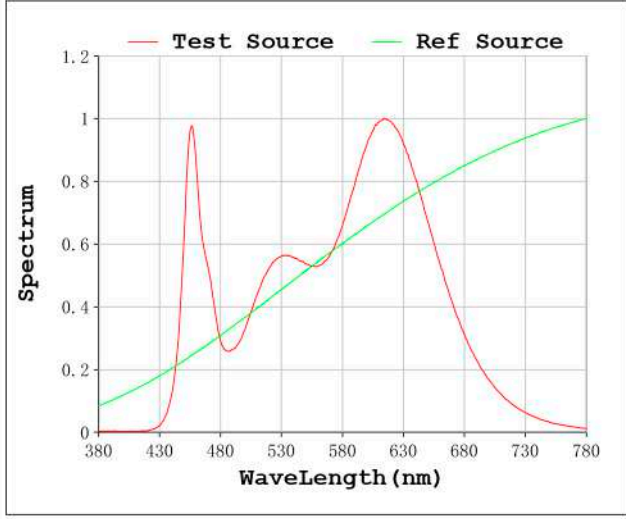
Electrical parameters:

V = 23.998 V I = 0.2120 A P = 5.088 W PF = 1.000

Status: Integral T = 1639 ms Ip = 48004 (73%)

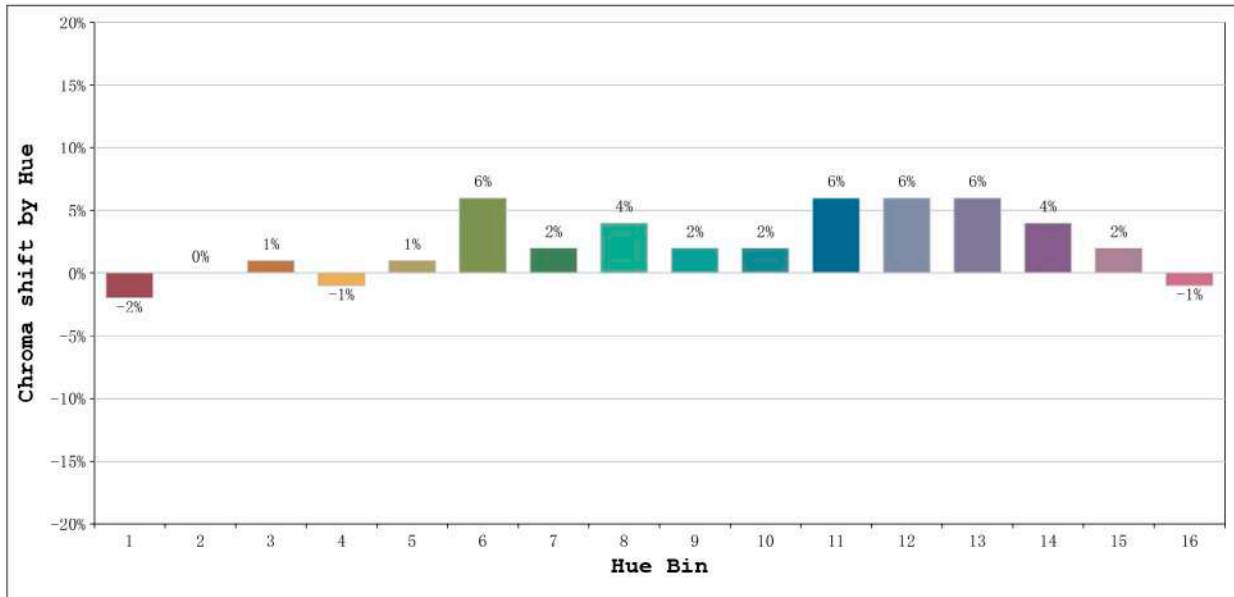
Model: Ecoled Palma 4200K	Number: 33.005
Tester: Sergio Carneros	Date: 25-5-2021
Temperature: 27Deg	Humidity: 57%
Manufacturer: Luz Negra S.L	Remarks: 100cm de tira flexible

Rf: 89 CCT: 3203 K u': 0.2485
Rg: 104 Duv: -0.0114 v': 0.5017



Model:Ecoled Palma 3200K
Tester:Sergio Carneros
Temperature:25.8Deg
Manufacturer:Luz Negra

Number: 33.006
Date:25-5-2021
Humidity:57%
Remarks:100cm de tira flexible

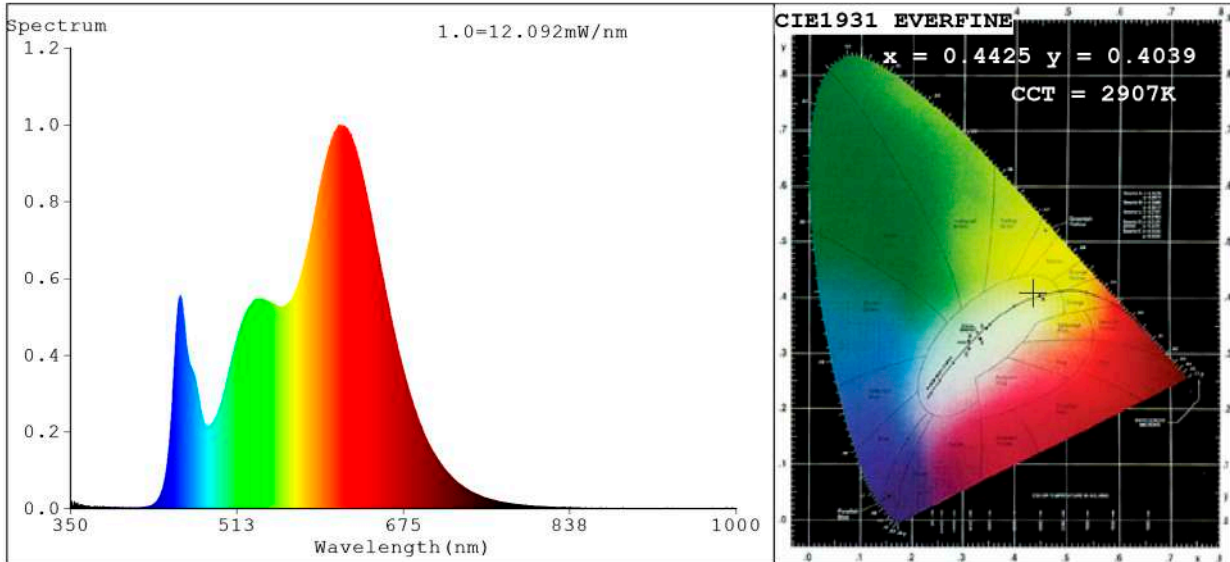


Hue Bin	Hue Angle	Rf	Graphic shift(%)	
			Chroma	Hue
1	0.0° - 22.5°	90	-2	2
2	22.5° - 45.0°	91	0	3
3	45.0° - 67.5°	89	1	5
4	67.5° - 90.0°	91	-1	0
5	90.0° - 112.5°	92	1	2
6	112.5° - 135.0°	89	6	3
7	135.0° - 157.5°	91	2	0
8	157.5° - 180.0°	92	4	0
9	180.0° - 202.5°	92	2	3
10	202.5° - 225.0°	91	2	5
11	225.0° - 247.5°	87	6	7
12	247.5° - 270.0°	86	6	1
13	270.0° - 292.5°	86	6	-8
14	292.5° - 315.0°	85	4	-8
15	315.0° - 337.5°	87	2	-4
16	337.5° - 360.0°	85	-1	-8

Model:Ecoled Palma 3200K
Tester:Sergio Carneros
Temperature:25.8Deg
Manufacturer:Luz Negra

Number: 33.006
Date:25-5-2021
Humidity:57%
Remarks:100cm de tira flexible

Spectrum Test Report



Color Parameters:

Chromaticity Coordinate: $x=0.4425$ $y=0.4039$ / $u'=0.2542$ $v'=0.5222$
 CCT=2907K (Duv=-0.0008) Dominant WL:Ld =583.5nm Purity=54.1%
 Ratio:R=26.1% G=71.0% B=2.9%; Peak WL:Lp=612.1nm FWHM=143.1nm
 Render Index:Ra=93.8 CRI=91.4 TM30:Rf=89 Rg=99
 R1 =98 R2 =98 R3 =97 R4 =98 R5 =97 R6 =93 R7 =89
 R8 =80 R9 =56 R10=99 R11=96 R12=80 R13=99 R14=99 R15=91

Photo Parameters:

Flux = 538.0 lm Eff. : 107.42 lm/W Fe = 1.748 W Scotopic:774.19 S/P:1.439

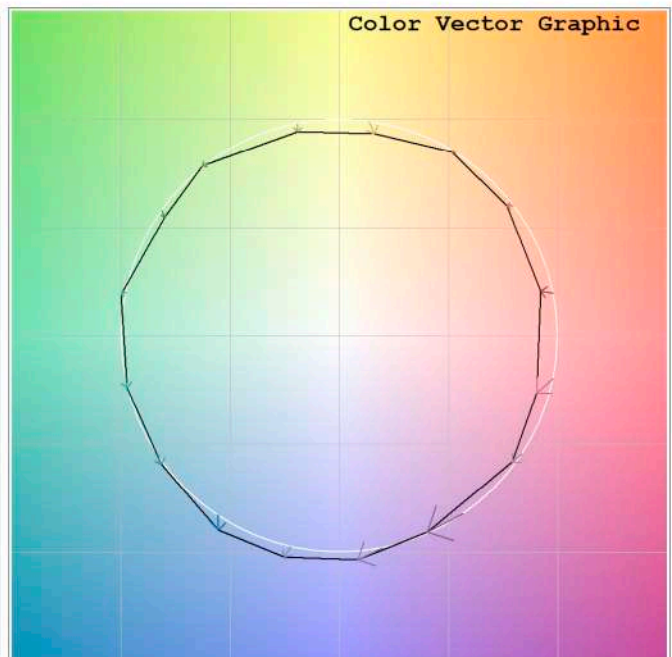
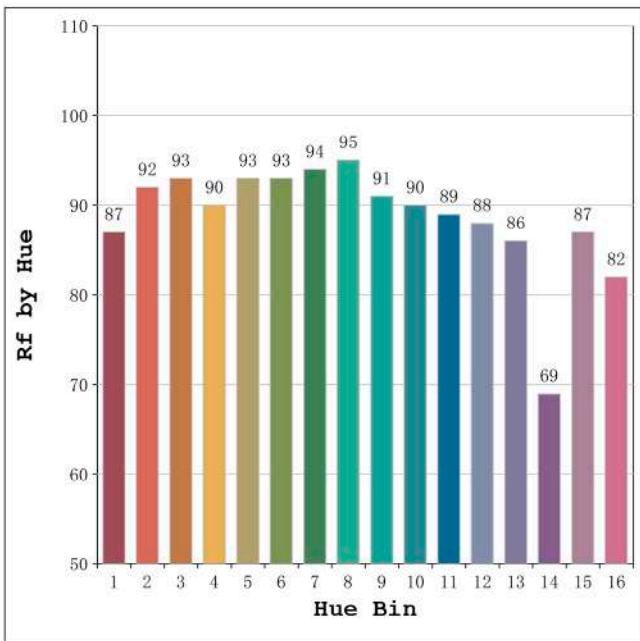
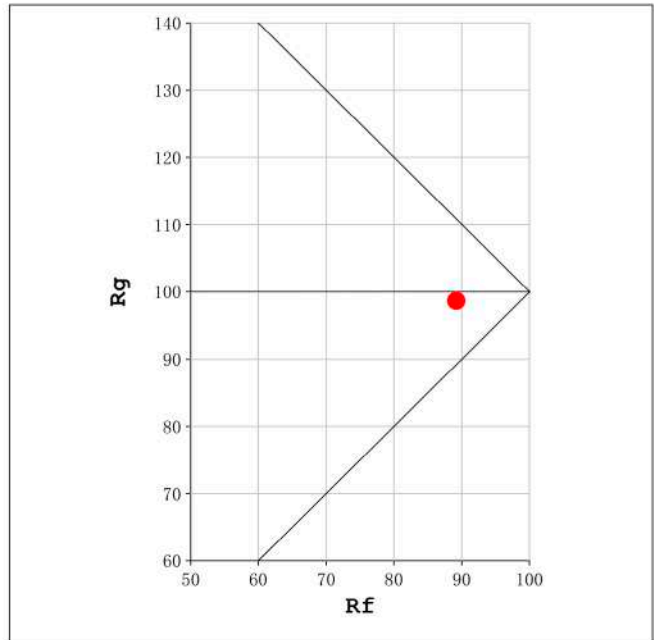
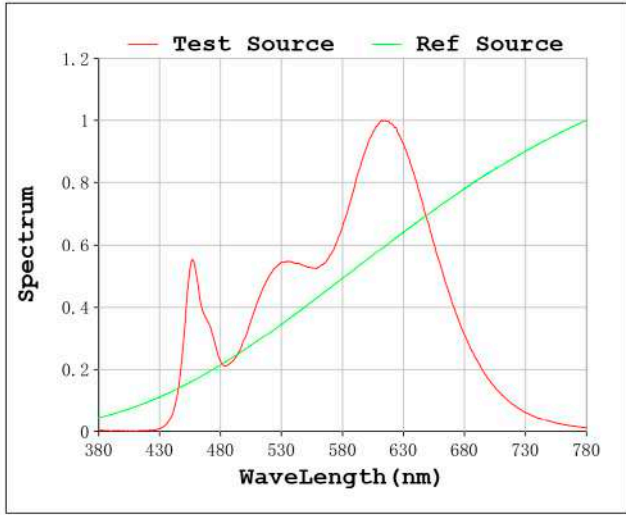
Electrical parameters:

V = 23.998 V I = 0.2087 A P = 5.008 W PF = 1.000

Status: Integral T = 1654 ms Ip = 36592 (56%)

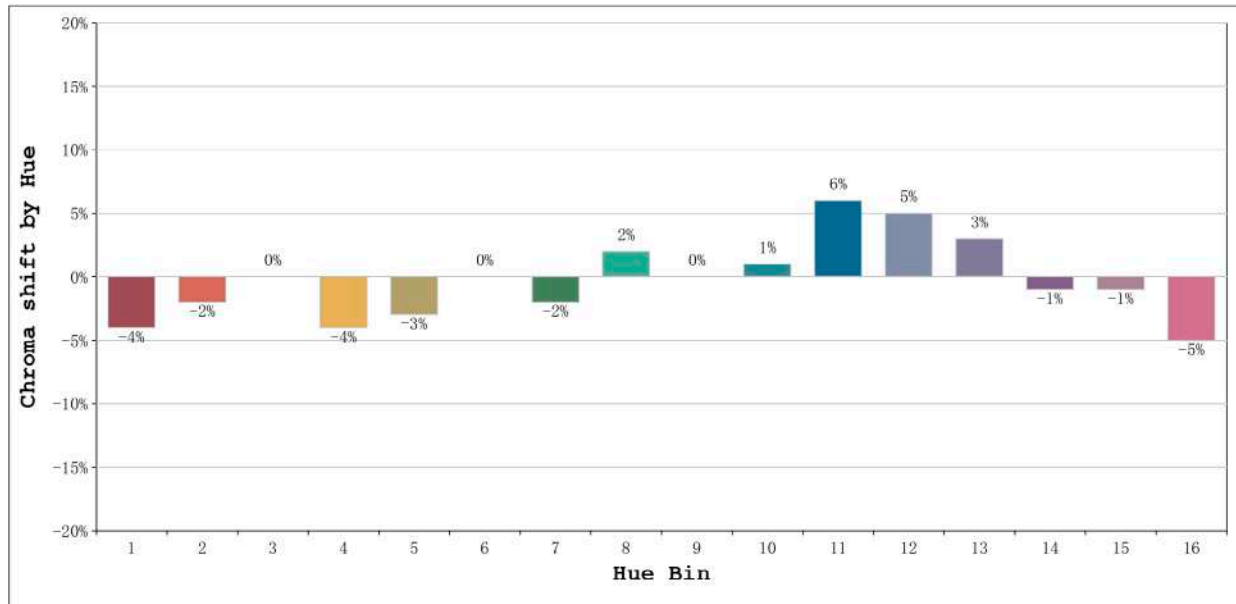
Model:Ecoled Palma 2850	Number: 33.007
Tester:Sergio Carneros	Date:25-5-2021
Temperature:21Deg	Humidity:57%
Manufacturer:Luz Negra S.L	Remarks:100cm de tira flexible

Rf: 89 CCT: 2907 K u': 0.2542
Rg: 99 Duv: -0.0008 v': 0.5222



Model:Ecoled Palma 2850
Tester:Sergio Careros
Temperature:21Deg
Manufacturer:Luz Negra S.L

Number: 33.007
Date:25-5-2021
Humidity:57%
Remarks:100cm de tira flexible



Hue Bin	Hue Angle	Rf	Graphic shift(%)	
			Chroma	Hue
1	0.0° - 22.5°	87	-4	2
2	22.5° - 45.0°	92	-2	2
3	45.0° - 67.5°	93	0	2
4	67.5° - 90.0°	90	-4	-2
5	90.0° - 112.5°	93	-3	1
6	112.5° - 135.0°	93	0	3
7	135.0° - 157.5°	94	-2	2
8	157.5° - 180.0°	95	2	2
9	180.0° - 202.5°	91	0	5
10	202.5° - 225.0°	90	1	5
11	225.0° - 247.5°	89	6	4
12	247.5° - 270.0°	88	5	-1
13	270.0° - 292.5°	86	3	-11
14	292.5° - 315.0°	69	-1	-17
15	315.0° - 337.5°	87	-1	-4
16	337.5° - 360.0°	82	-5	-7

Model:Ecoled Palma 2850
 Tester:Sergio Carneros
 Temperature:21Deg
 Manufacturer:Luz Negra S.L

Number: 33.007
 Date:25-5-2021
 Humidity:57%
 Remarks:100cm de tira flexible