

BAJA LUMINOSIDAD

Ref: 30.002 6500°K
 Ref: 30.102 4000°K
 Ref: 30.003 3000°K

Tira flexible serie "BASIC"

IP20 con 60 leds/metro 3528SMD.

PCB 8mm

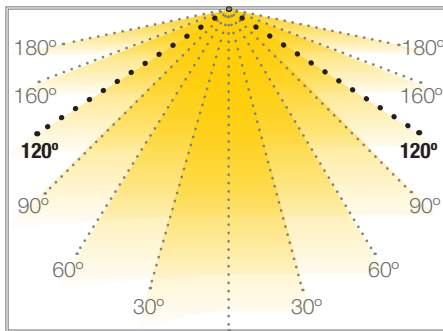
Uso diario máximo recomendado: 18h

Conexión máxima en circuito abierto: 7.5m

Conexión máxima en circuito cerrado: 15m

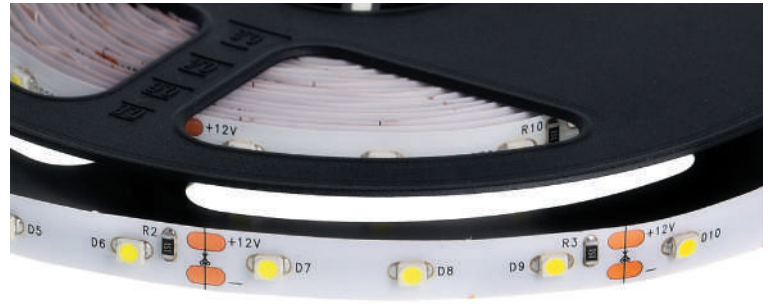
Vida útil: 30.000h*

*En función de la disipación del perfil, de las horas diarias trabajadas y de la temperatura externa ambiental de trabajo.



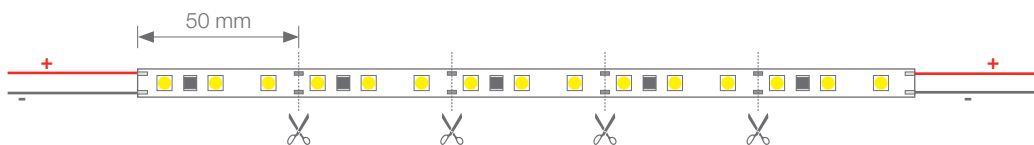
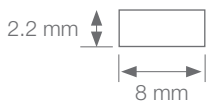
JADE

TIRAS FLEXIBLES



Potencia (W)	4.8W/m
Voltaje (V)	12V
Tipo Led	SMD3528
Lumens (6500°K)	500 Lm/m
Lumens (4000°K)	394 Lm/m
Lumens (3000°K)	400 Lm/m
CRI	>70
Emisión de luz	120°
Estanqueidad (IP)	IP20
Nº leds/m	60
Medidas	5000x8x2.2mm
Cortable	cada 50mm
PCB	8mm
Temperatura trabajo	-20°C / +40°C
Apto para	interior
Embalaje	1 rollo/5m
Garantía	2 años

Aprobado por: 

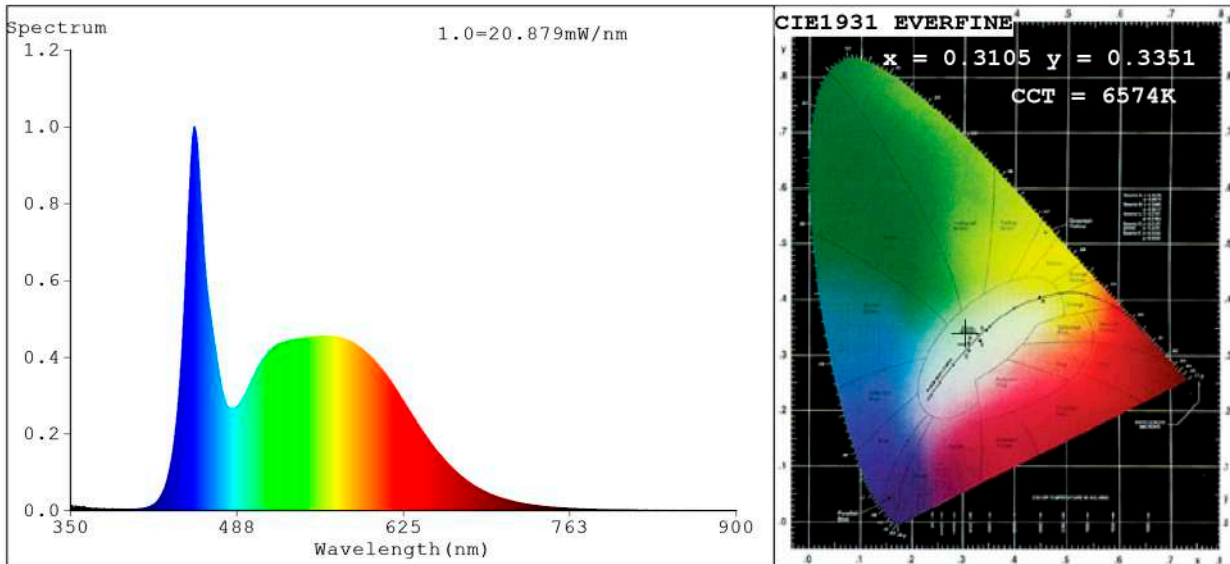


BARCELONA
 C/ Carles Buhigues, 13
 08420 Canovelles
 Info@luznegra.net
 Tel: +34 938 402 598

MADRID
 C/ Adaptación, 27
 28906 Getafe
 centro@luznegra.net
 Tel: +34 916 416 081

PARIS
 113 Avenue Joffre
 77450 Esbly
 france@luznegra.net
 Tel: +33 (0) 160 426 585

Spectrum Test Report



Color Parameters:

Chromaticity Coordinate: $x=0.3105$ $y=0.3351$ / $u'=0.1941$ $v'=0.4712$
 CCT=6574K (Duv=0.0074) Dominant WL: $\lambda_d = 492.7\text{nm}$ Purity=7.6%
 Ratio: R=13.0% G=81.0% B=6.0% ; Peak WL: $\lambda_p = 452.5\text{nm}$ FWHM=22.6nm
 Render Index: Ra=82.7 CRI=75.0 TM30: Rf=81 Rg=92
 R1 =80 R2 =89 R3 =94 R4 =80 R5 =81 R6 =84 R7 =88
 R8 =67 R9 =0 R10=73 R11=79 R12=56 R13=83 R14=97 R15=74

Photo Parameters:

Flux = 621.8 lm Eff. : 131.80 lm/W $F_e = 1.987$ W Scotopic:1431.9 S/P:2.303

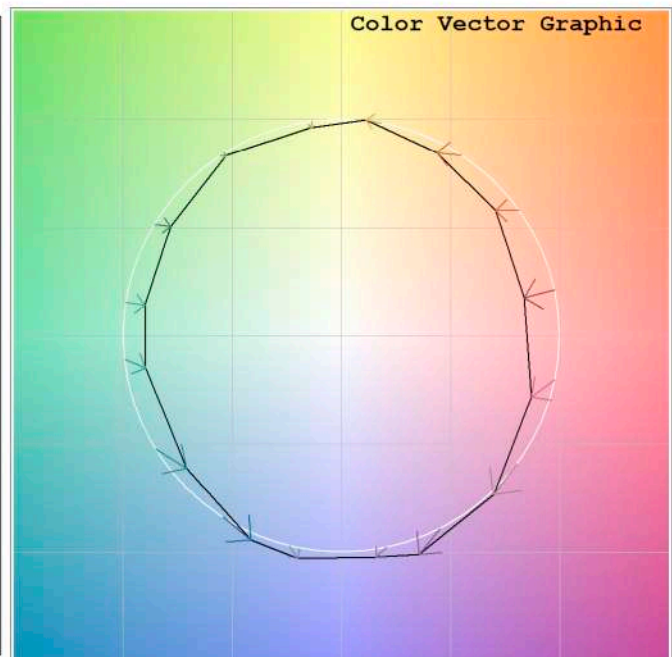
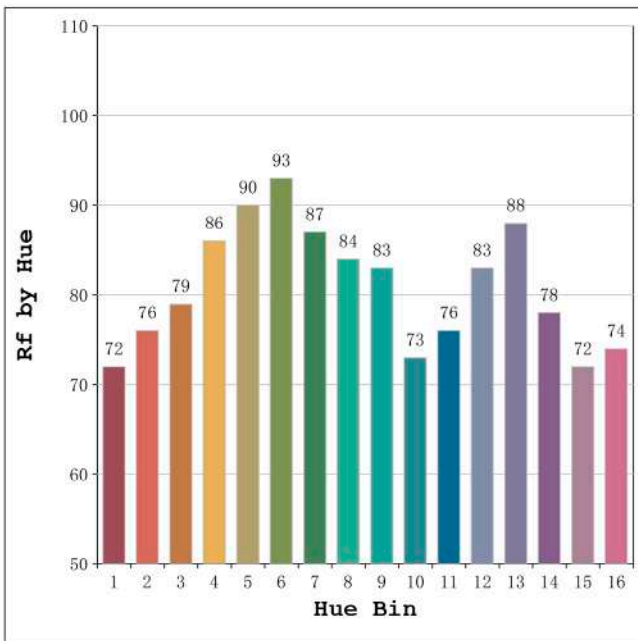
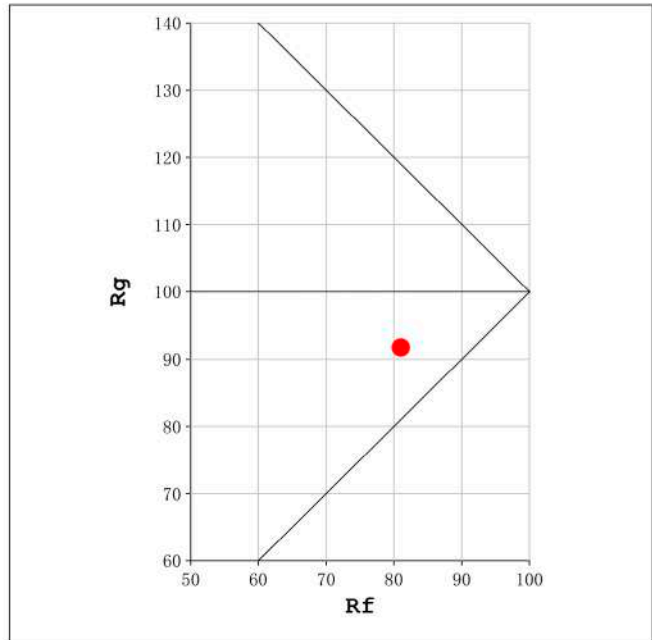
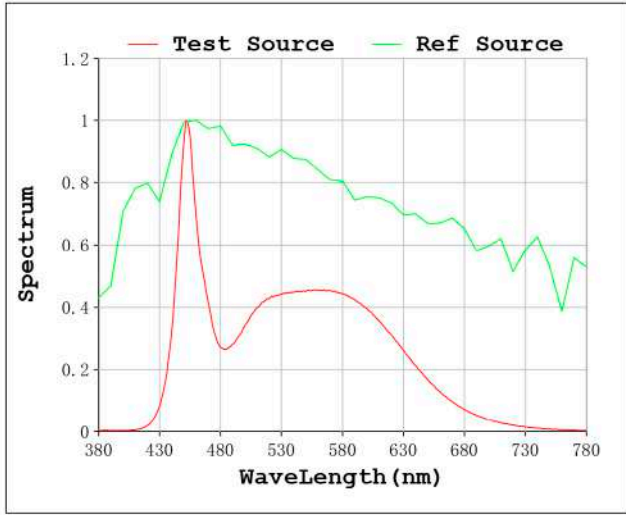
Electrical parameters:

V = 11.998 V I = 0.3932 A P = 4.718 W PF = 1.000

Status: Integral T = 1684 ms $I_p = 49796$ (76%)

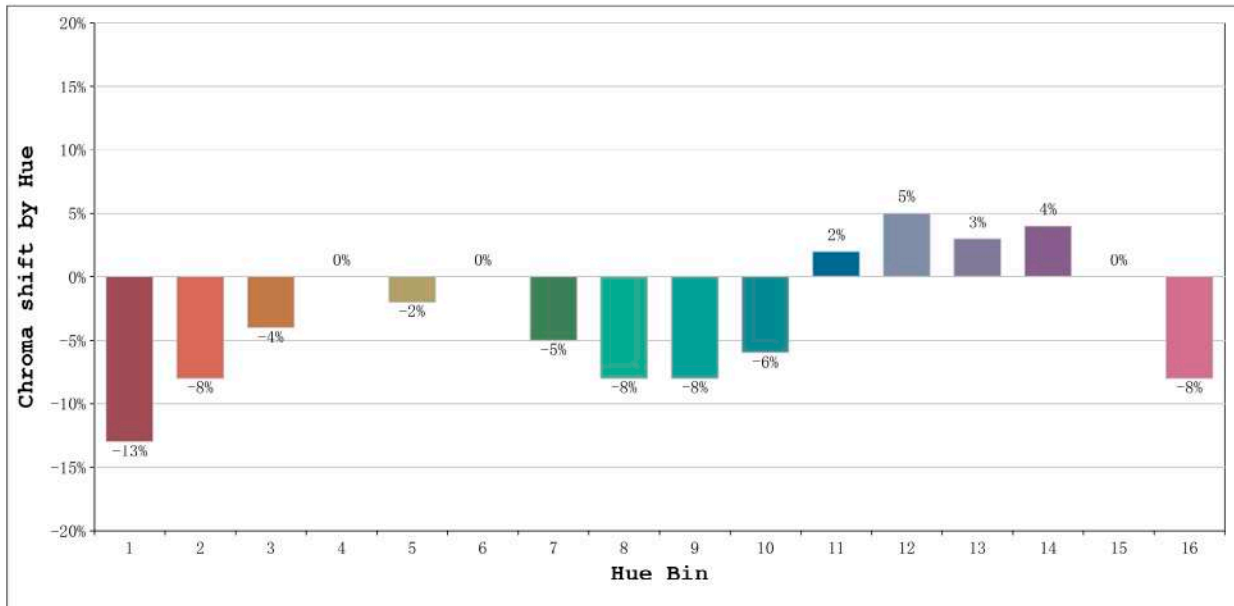
Model: Ecoled Jade 6500K	Number: 33.002
Tester: Sergio Carneros	Date: 25-5-2021
Temperature: 24Deg	Humidity: 57%
Manufacturer: Luz Negra S.L	Remarks: 100cm de tira flexible

Rf: 81 CCT: 6574 K u': 0.1941
Rg: 92 Duv: 0.0074 v': 0.4712



Model:Ecoled Jade 6500K
Tester:Sergio Carneros
Temperature:24Deg
Manufacturer:Luz Negra S.L

Number: 33.002
Date:25-5-2021
Humidity:57%
Remarks:100cm de tira flexible

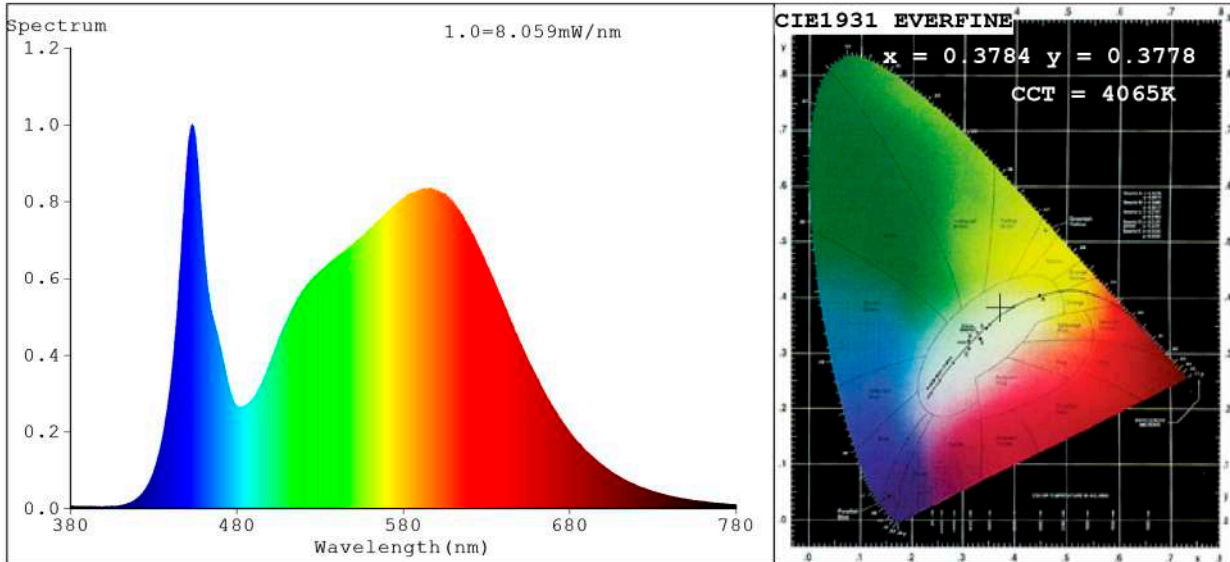


Hue Bin	Hue Angle	Rf	Graphic shift(%)	
			Chroma	Hue
1	0.0° - 22.5°	72	-13	0
2	22.5° - 45.0°	76	-8	6
3	45.0° - 67.5°	79	-4	10
4	67.5° - 90.0°	86	0	7
5	90.0° - 112.5°	90	-2	2
6	112.5° - 135.0°	93	0	-1
7	135.0° - 157.5°	87	-5	-2
8	157.5° - 180.0°	84	-8	0
9	180.0° - 202.5°	83	-8	6
10	202.5° - 225.0°	73	-6	15
11	225.0° - 247.5°	76	2	16
12	247.5° - 270.0°	83	5	5
13	270.0° - 292.5°	88	3	-5
14	292.5° - 315.0°	78	4	-13
15	315.0° - 337.5°	72	0	-16
16	337.5° - 360.0°	74	-8	-9

Model:Ecoled Jade 6500K
Tester:Sergio Carneros
Temperature:24Deg
Manufacturer:Luz Negra S.L

Number: 33.002
Date:25-5-2021
Humidity:57%
Remarks:100cm de tira flexible

Spectrum Test Report



Color Parameters:

Chromaticity Coordinate: $x=0.3784$ $y=0.3778$ / $u'=0.2233$ $v'=0.5017$
 CCT=4065K (Duv=0.0011) Dominant WL: $\lambda_d = 578.2\text{nm}$ Purity=26.9%
 Ratio: R=18.2% G=78.1% B=3.7% ; Peak WL: $\lambda_p = 453.2\text{nm}$ FWHM=21.4nm
 Render Index: Ra=83.3 CRI=76.6 TM30: Rf=82 Rg=95
 R1 =82 R2 =90 R3 =95 R4 =81 R5 =81 R6 =85 R7 =87
 R8 =66 R9 =11 R10=75 R11=80 R12=59 R13=84 R14=97 R15=76

Photo Parameters:

Flux = 394.2 lm Eff. : 97.08 lm/W Fe = 1.197 W Scotopic: 674.74 S/P: 1.7118

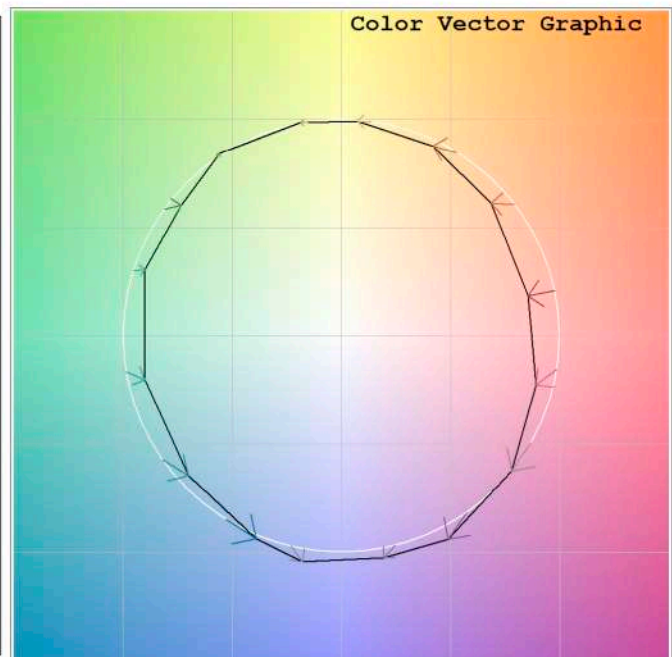
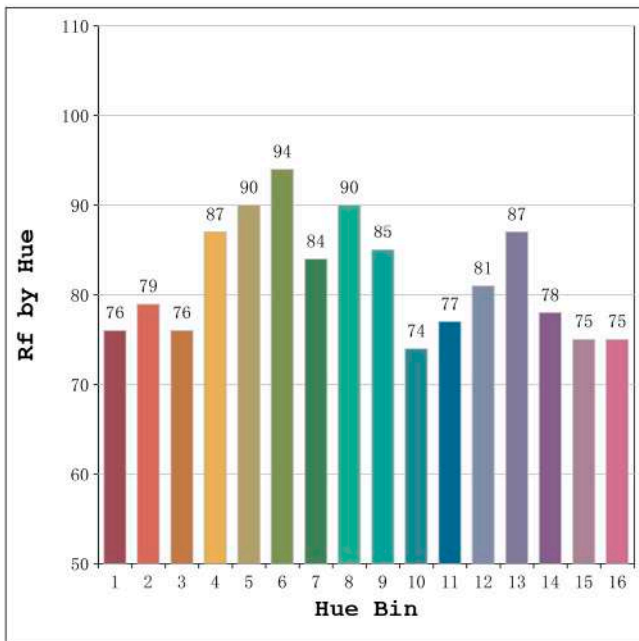
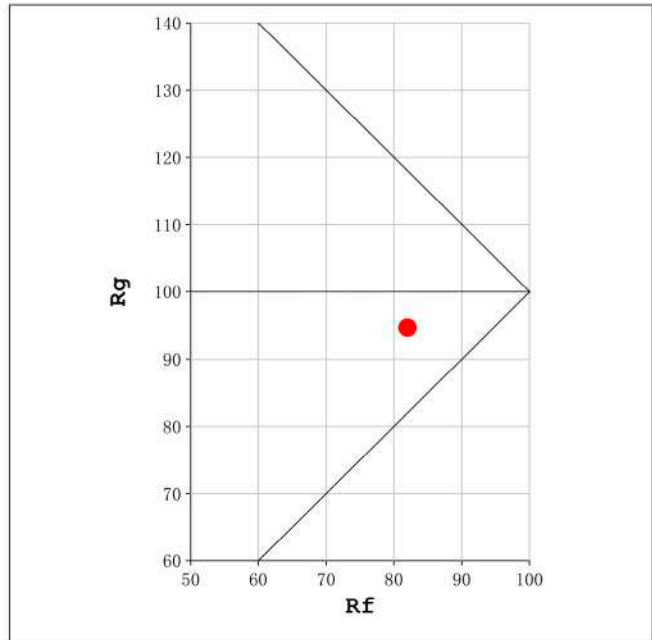
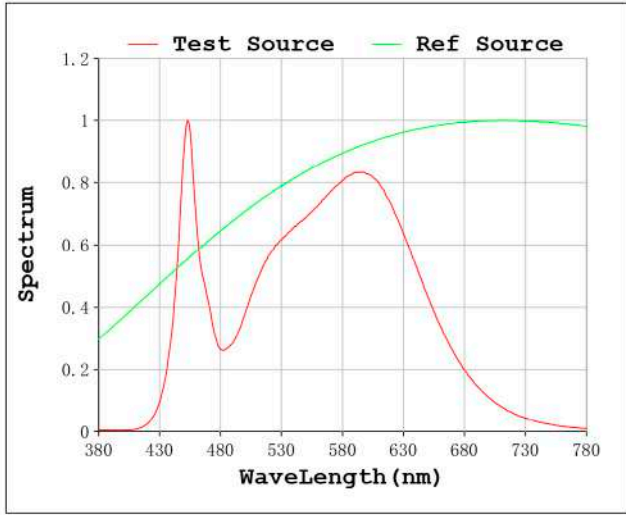
Electrical parameters:

V = 11.998 V I = 0.3384 A P = 4.060 W PF = 1.000

Status: Integral T = 3555 ms Ip = 51936 (79%)

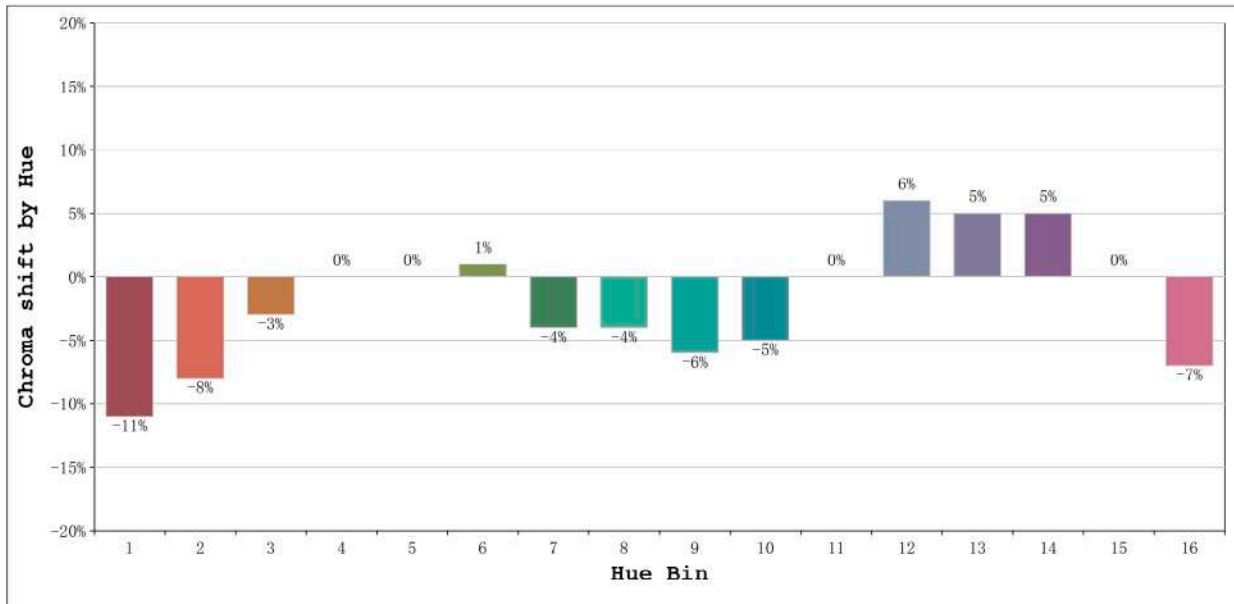
Model: Ecoled Jade 4000K	Number: 30.102
Tester: Sergio Carneros	Date:
Temperature: 25Deg	Humidity: 57%
Manufacturer: Luz Negra S.L	Remarks: 100cm de tira flexible

Rf: 82 CCT: 4065 K u': 0.2233
Rg: 95 Duv: 0.0011 v': 0.5017



Model:Ecoled Jade 4000K
Tester:Sergio Carneros
Temperature:25Deg
Manufacturer:Luz Negra S.L

Number: 30.102
Date:
Humidity:57%
Remarks:100cm de tira flexible

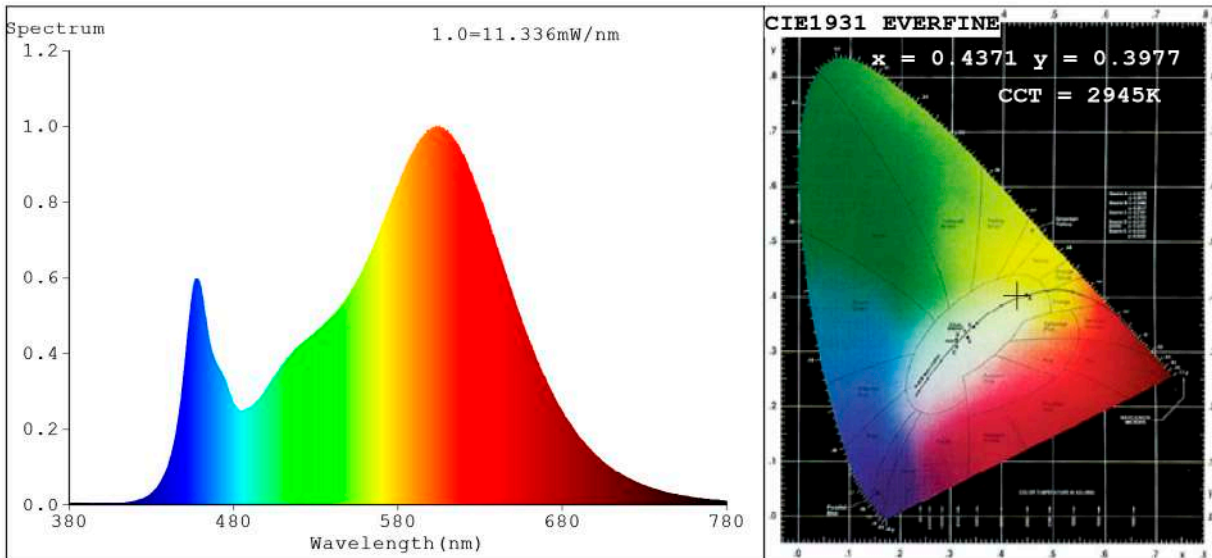


Hue Bin	Hue Angle	Rf	Graphic shift(%)	
			Chroma	Hue
1	0.0° - 22.5°	76	-11	0
2	22.5° - 45.0°	79	-8	6
3	45.0° - 67.5°	76	-3	11
4	67.5° - 90.0°	87	0	6
5	90.0° - 112.5°	90	0	3
6	112.5° - 135.0°	94	1	-1
7	135.0° - 157.5°	84	-4	-5
8	157.5° - 180.0°	90	-4	-1
9	180.0° - 202.5°	85	-6	5
10	202.5° - 225.0°	74	-5	13
11	225.0° - 247.5°	77	0	16
12	247.5° - 270.0°	81	6	6
13	270.0° - 292.5°	87	5	-5
14	292.5° - 315.0°	78	5	-13
15	315.0° - 337.5°	75	0	-15
16	337.5° - 360.0°	75	-7	-8

Model:Ecoled Jade 4000K
 Tester:Sergio Carneros
 Temperature:25Deg
 Manufacturer:Luz Negra S.L

Number: 30.102
 Date:
 Humidity:57%
 Remarks:100cm de tira flexible

Spectrum Test Report



Color Parameters:

Chromaticity Coordinate: $x=0.4371$ $y=0.3977$ / $u'=0.2534$ $v'=0.5189$
 CCT=2945K (Duv=-0.0026) Dominant WL: $\lambda_d = 584.0\text{nm}$ Purity=50.6%
 Ratio: R=23.6% G=73.2% B=3.1% ; Peak WL: $\lambda_p = 605.2\text{nm}$ FWHM=114.1nm
 Render Index: Ra=82.5 CRI=78.0 TM30: Rf=81 Rg=94
 R1 =83 R2 =95 R3 =91 R4 =79 R5 =83 R6 =94 R7 =79
 R8 =56 R9 =7 R10=89 R11=78 R12=75 R13=87 R14=96 R15=75

Photo Parameters:

Flux = 530.2 lm Eff. : 108.41 lm/W Fe = 1.621 W Scotopic:735.65 S/P:1.3875

Electrical parameters:

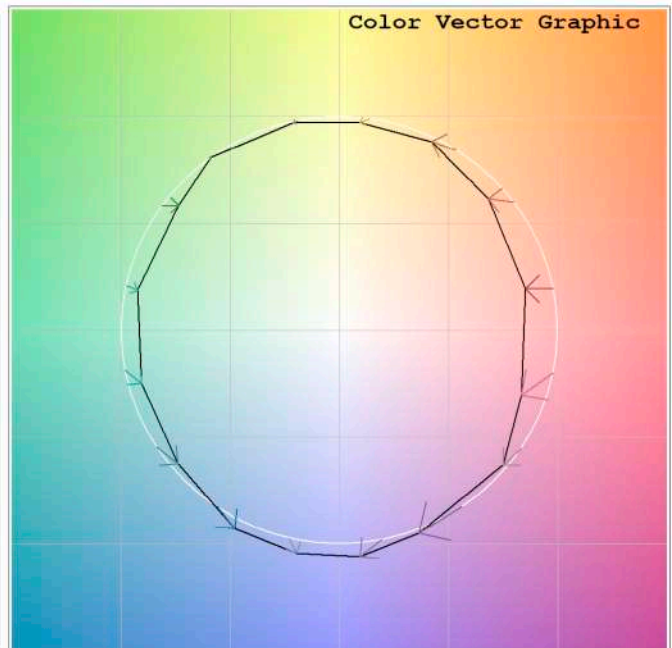
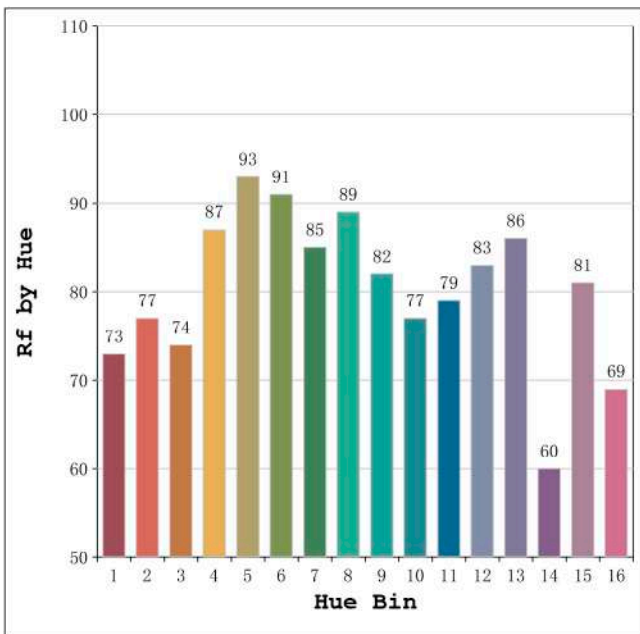
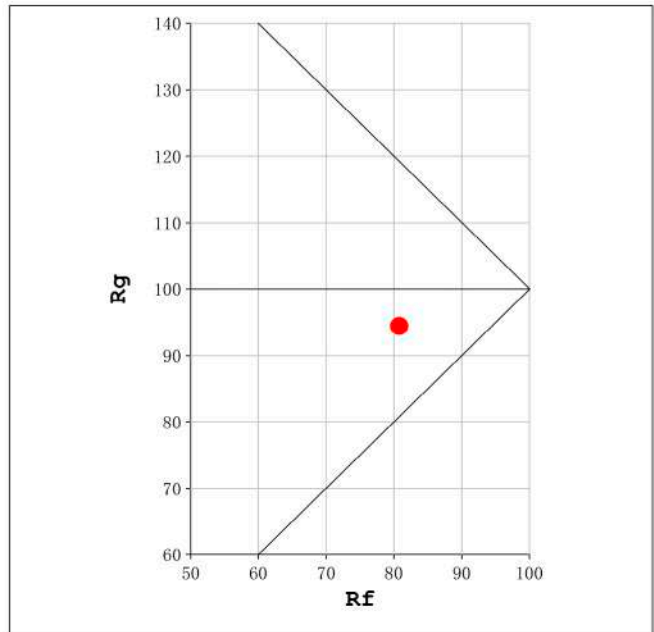
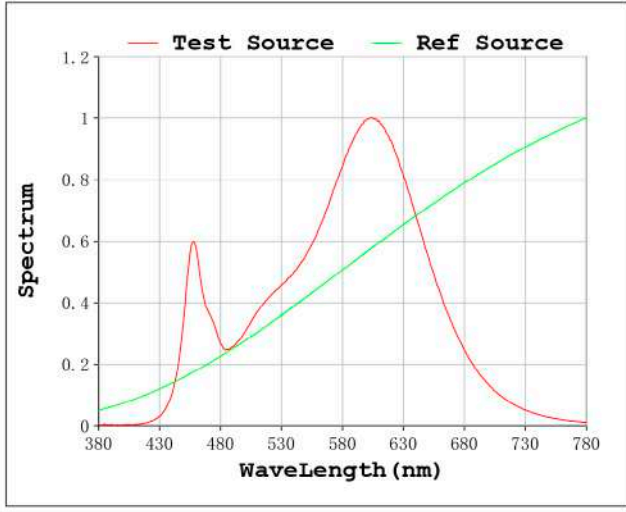
V = 11.998 V I = 0.4076 A P = 4.890 W PF = 1.000

Status: Integral T = 1409 ms Ip = 33895 (52%)

Model: Ecoled Jade 3000K
 Tester: Sergio Carneros
 Temperature: 20Deg
 Manufacturer: Luz Negra

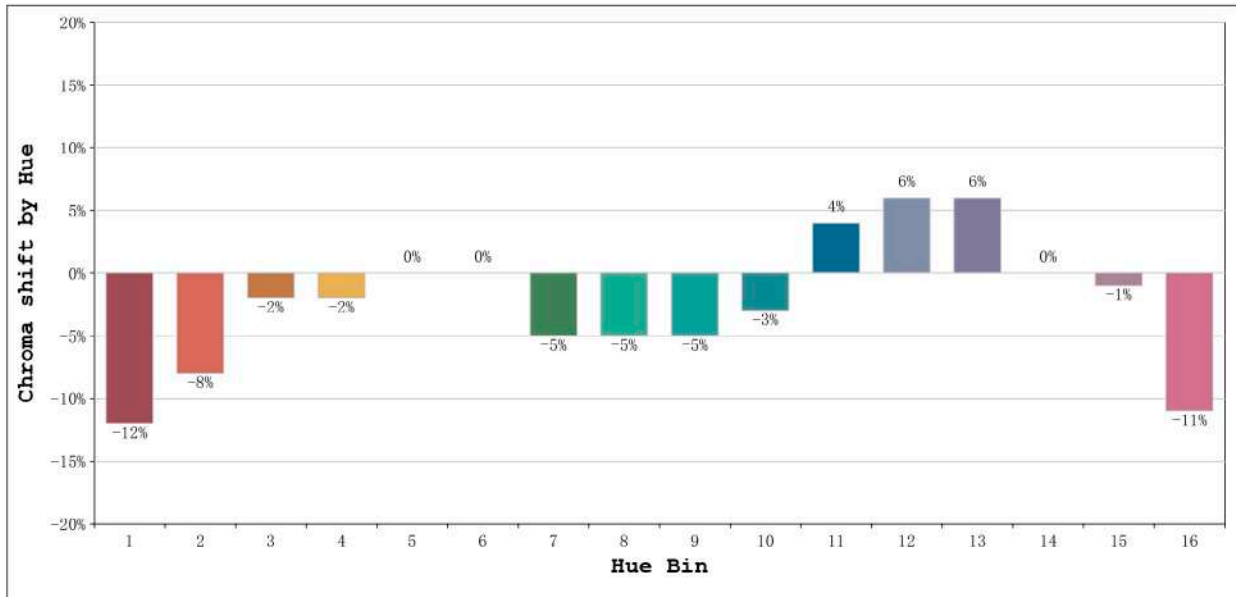
Number: 30.003
 Date:
 Humidity: 50%
 Remarks: 100cm de tira flexible

Rf: 81 CCT: 2945 K u': 0.2534
Rg: 94 Duv: -0.0026 v': 0.5189



Model:Ecoled Jade 3000K
Tester:Sergio Carneros
Temperature:20Deg
Manufacturer:Luz Negra

Number: 30.003
Date:
Humidity:50%
Remarks:100cm de tira flexible



Hue Bin	Hue Angle	Rf	Graphic shift(%)	
			Chroma	Hue
1	0.0° - 22.5°	73	-12	2
2	22.5° - 45.0°	77	-8	8
3	45.0° - 67.5°	74	-2	11
4	67.5° - 90.0°	87	-2	4
5	90.0° - 112.5°	93	0	2
6	112.5° - 135.0°	91	0	0
7	135.0° - 157.5°	85	-5	-3
8	157.5° - 180.0°	89	-5	1
9	180.0° - 202.5°	82	-5	7
10	202.5° - 225.0°	77	-3	12
11	225.0° - 247.5°	79	4	12
12	247.5° - 270.0°	83	6	4
13	270.0° - 292.5°	86	6	-10
14	292.5° - 315.0°	60	0	-22
15	315.0° - 337.5°	81	-1	-10
16	337.5° - 360.0°	69	-11	-12

Model:Ecoled Jade 3000K
Tester:Sergio Carneros
Temperature:20Deg
Manufacturer:Luz Negra

Number: 30.003
Date:
Humidity:50%
Remarks:100cm de tira flexible