

BAJA LUMINOSIDAD

ESMERALDA

TIRAS FLEXIBLES

Ref: 30.015

RGB

Tira flexible **RGB** serie "**BASIC**"

IP65 con 30 leds/metro 5050SMD.

PCB 10mm

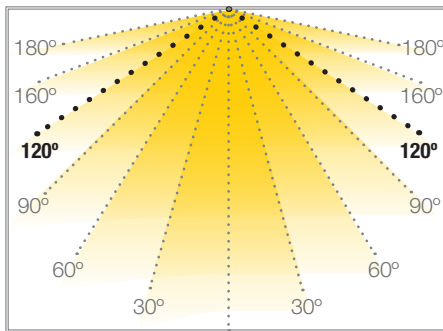
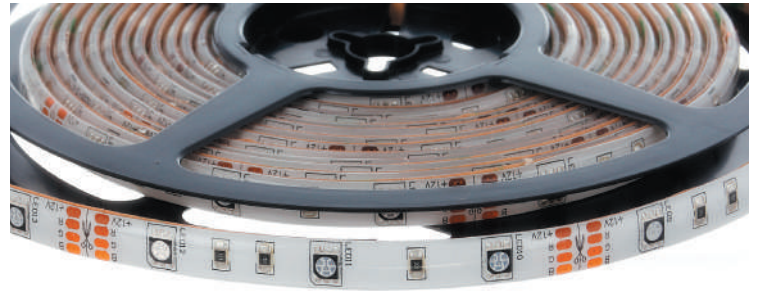
Uso diario máximo recomendado: 18h

Conexión máxima en circuito abierto: 7.5m

Conexión máxima en circuito cerrado: 15m

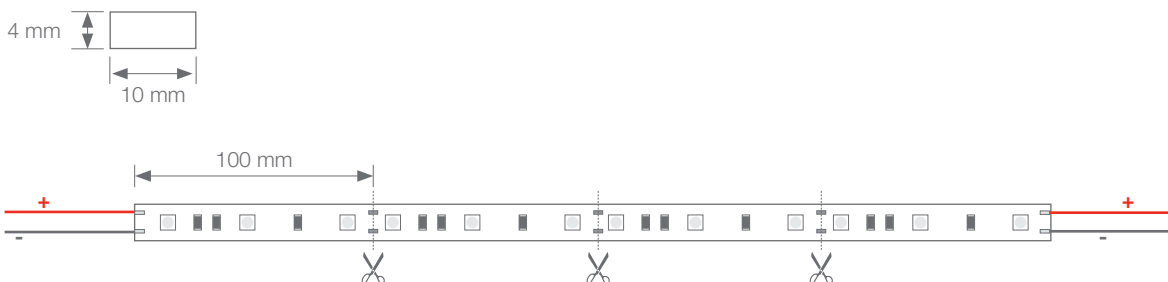
Vida útil: 30.000h*

*En función de la disipación del perfil, de las horas diarias trabajadas y de la temperatura externa ambiental de trabajo.



Potencia (W)	7.2W/m
Voltaje (V)	12V
Tipo Led	SMD5050
Lumens (blanco)	221 Lm/m
CRI	>30
Emisión de luz	120°
Estanqueidad (IP)	IP65
Nº leds/m	30
Medidas	5000x10x4mm
Cortable	cada 100mm
PCB	10mm
Temperatura trabajo	-20°C / +40°C
Secuenciador	no incluido
Apto para	interior/exterior
Embalaje	1 rollo/5m
Garantía	2 años

Aprobado por: 

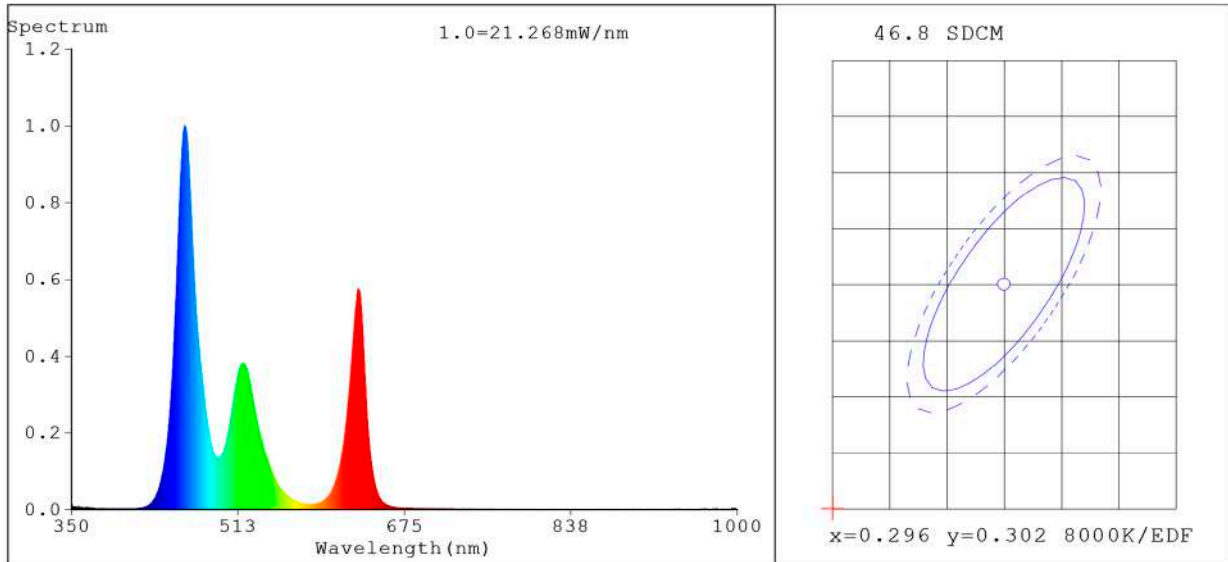


BARCELONA
C/ Carles Buhigues, 13
08420 Canovelles
Info@luznegra.net
Tel: +34 938 402 598

MADRID
C/ Adaptación, 27
28906 Getafe
centro@luznegra.net
Tel: +34 916 416 081

PARIS
113 Avenue Joffre
77450 Esbly
france@luznegra.net
Tel: +33 (0) 160 426 585

Spectrum Test Report



Color Parameters:

Chromaticity Coordinate: $x=0.2349$ $y=0.2176$ / $u'=0.1828$ $v'=0.3809$
 CCT=100000K (Duv=-0.0122) Dominant WL:Ld =473.4nm Purity=45.0%
 Ratio:R=22.8% G=62.7% B=14.4% ; Peak WL:Lp=460.5nm FWHM=21.0nm
 Render Index:Ra=41.8 CRI=37.2 TM30:Rf=41 Rg=120
 R1 =20 R2 =47 R3 =70 R4 =47 R5 =44 R6 =47 R7 =59
 R8 =0 R9 =0 R10=0 R11=33 R12=52 R13=22 R14=78 R15=0

Photo Parameters:

Flux = 220.7 lm Eff. : 32.62 lm/W Fe = 1.100 W Scotopic:977.72 S/P:4.4304

Electrical parameters:

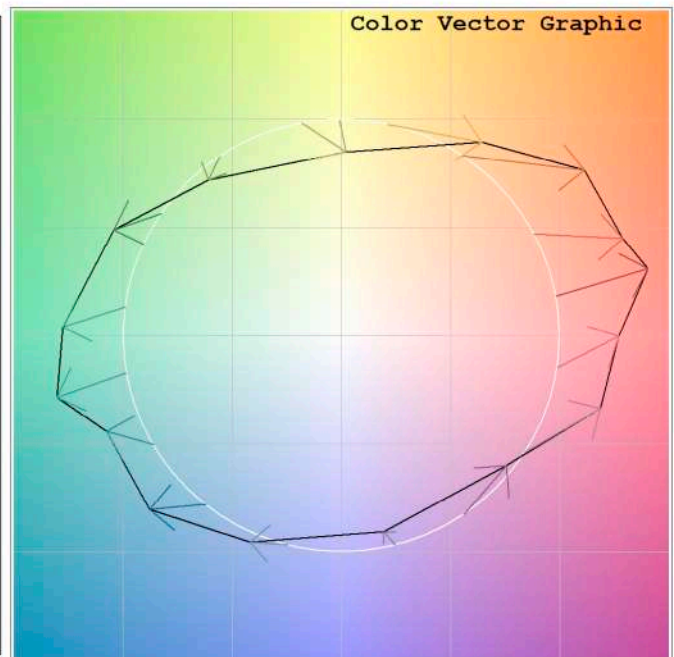
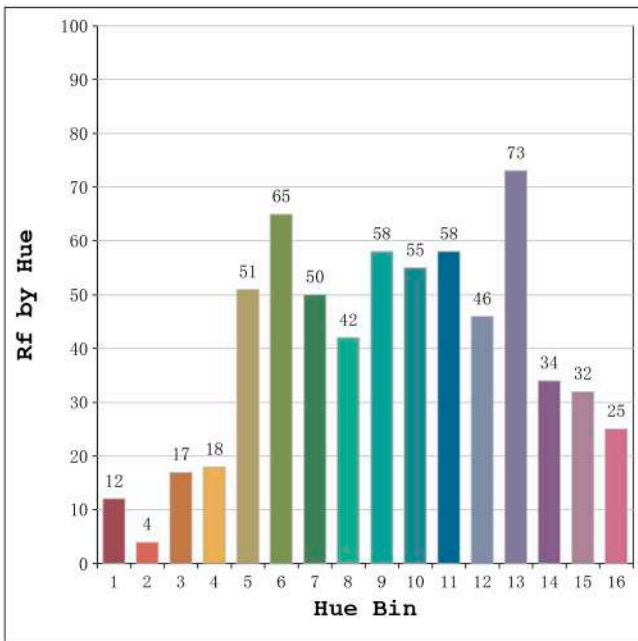
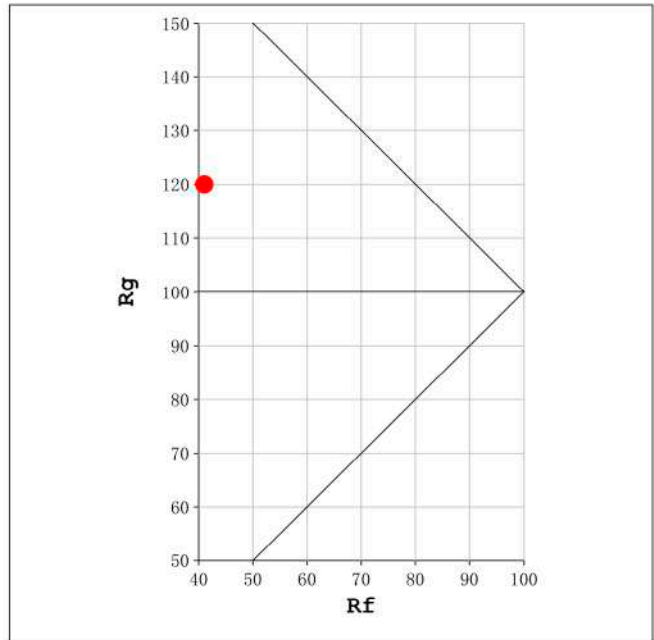
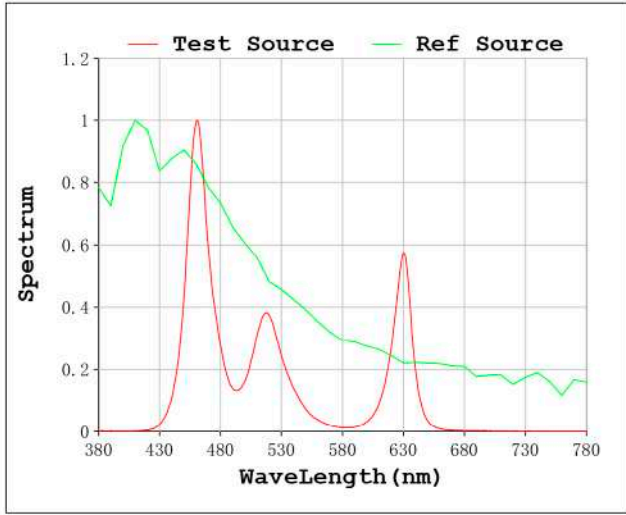
V = 11.998 V I = 0.5639 A P = 6.766 W PF = 1.000

Status: Integral T = 1440 ms Ip = 49292 (75%)

Model:Ecoled Esmeralda
 Tester:Sergio Carneros
 Temperature:25Deg
 Manufacturer:Luz Negra S.L

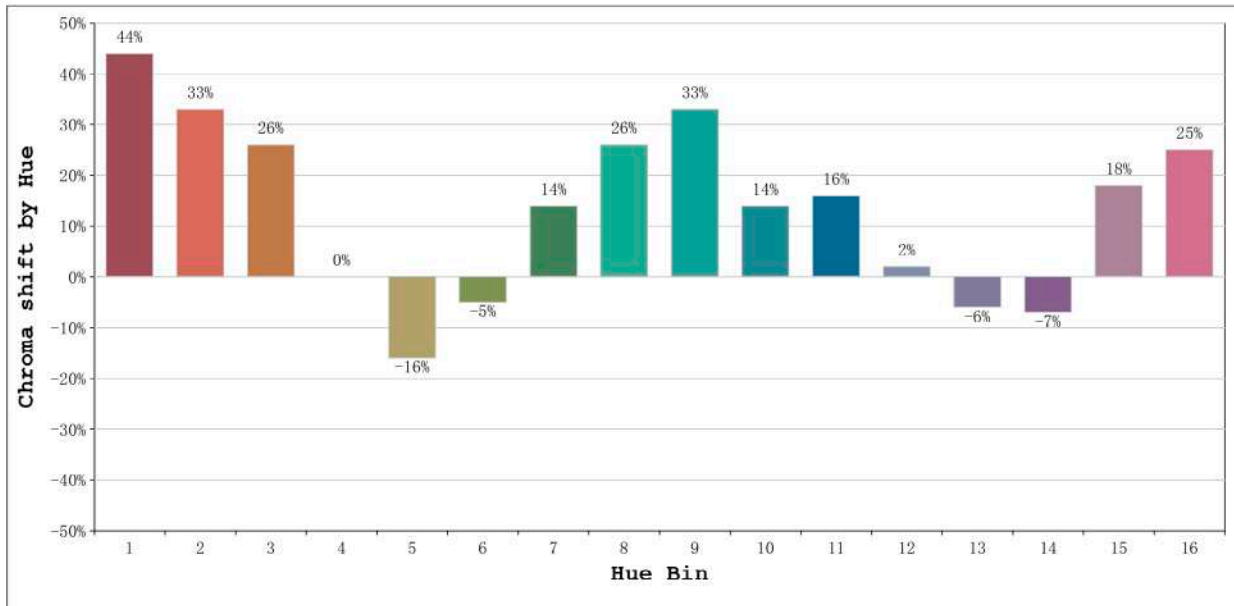
Number:30.015
 Date:25-5-2021
 Humidity:57%
 Remarks:100cm de tira flexible

Rf: 41 CCT: 100000 K u': 0.1828
Rg: 120 Duv: -0.0122 v': 0.3809



Model:Ecoled Esmeralda
Tester:Sergio Carneros
Temperature:25Deg
Manufacturer:Luz Negra S.L

Number:30.015
Date:25-5-2021
Humidity:57%
Remarks:100cm de tira flexible

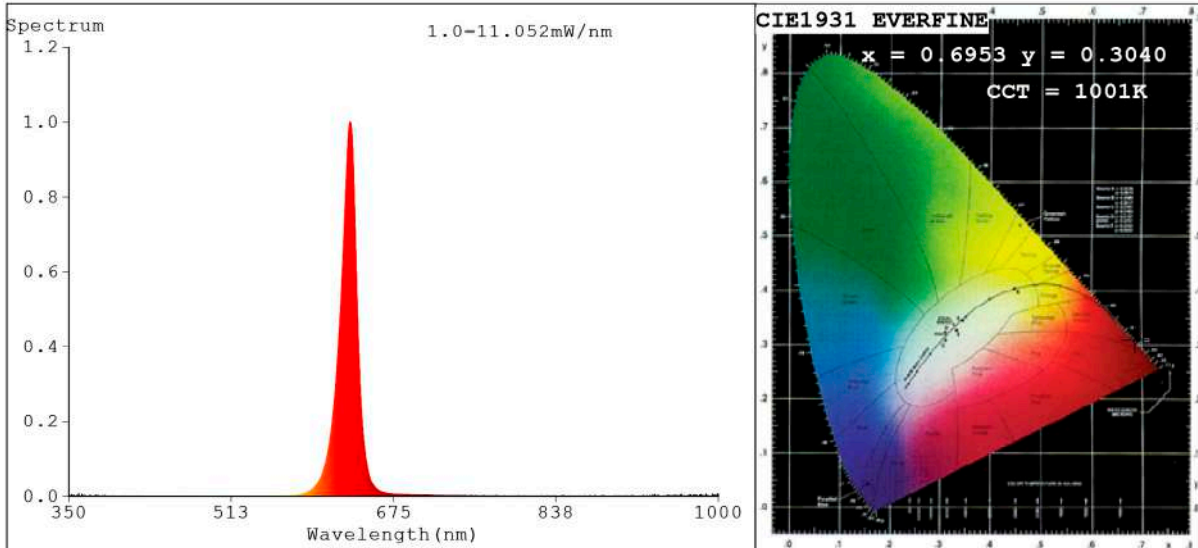


Hue Bin	Hue Angle	Rf	Graphic shift(%)	
			Chroma	Hue
1	0.0° - 22.5°	12	44	4
2	22.5° - 45.0°	4	33	-23
3	45.0° - 67.5°	17	26	-49
4	67.5° - 90.0°	18	0	-43
5	90.0° - 112.5°	51	-16	-17
6	112.5° - 135.0°	65	-5	10
7	135.0° - 157.5°	50	14	18
8	157.5° - 180.0°	42	26	15
9	180.0° - 202.5°	58	33	5
10	202.5° - 225.0°	55	14	-16
11	225.0° - 247.5°	58	16	-19
12	247.5° - 270.0°	46	2	-16
13	270.0° - 292.5°	73	-6	-3
14	292.5° - 315.0°	34	-7	29
15	315.0° - 337.5°	32	18	36
16	337.5° - 360.0°	25	25	20

Model:Ecoled Esmeralda
Tester:Sergio Carneros
Temperature:25Deg
Manufacturer:Luz Negra S.L

Number:30.015
Date:25-5-2021
Humidity:57%
Remarks:100cm de tira flexible

Spectrum Test Report



Color Parameters:

Chromaticity Coordinate: $x=0.6953$ $y=0.3040$ / $u'=0.5289$ $v'=0.5204$
 CCT=1001K (Duv=-0.0814) Dominant WL:Ld =622.3nm Purity=99.8%
 Ratio:R=96.1% G=3.8% B=0.0% ; Peak WL:Lp=631.3nm FWHM=16.8nm
 Render Index:Ra=26.7 CRI=32.5 TM30:Rf=13 Rg=-1
 R1 =7 R2 =78 R3 =31 R4 =0 R5 =2 R6 =90 R7 =6
 R8 =0 R9 =0 R10=72 R11=0 R12=79 R13=30 R14=60 R15=0

Photo Parameters:

Flux = 44.67 lm Eff. : 19.81 lm/W Fe = 229.9 mW Scotopic:2.3786 S/P:0.05325

Electrical parameters:

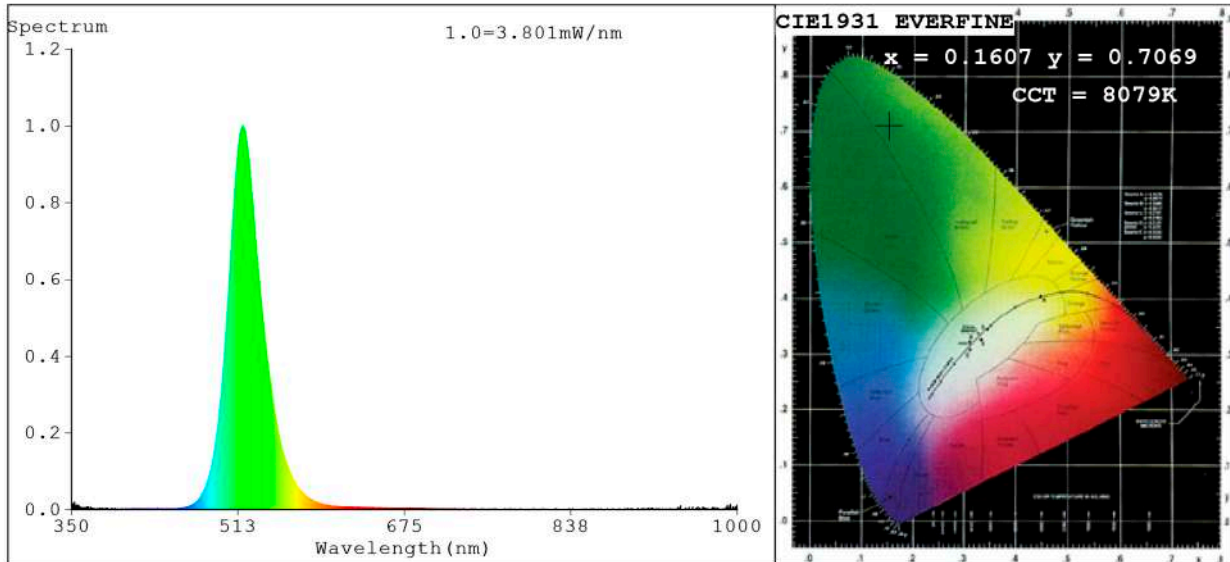
V = 11.998 V I = 0.1879 A P = 2.254 W PF = 1.000

Status: Integral T = 2000 ms Ip = 34028 (52%)

Model:Ecoled Esmeralda rojo
 Tester:Sergio Carneros
 Temperature:21Deg
 Manufacturer:Luz Negra S.L

Number:30.015
 Date:25-5-2021
 Humidity:57%
 Remarks:100cm de tira flexible

Spectrum Test Report



Color Parameters:

Chromaticity Coordinate: $x=0.1607$ $y=0.7069$ / $u'=0.0576$ $v'=0.5700$
 CCT=8079K (Duv=0.1580) Dominant WL: $\lambda_d = 523.7\text{nm}$ Purity=75.2%
 Ratio: R=0.5% G=96.4% B=3.2% ; Peak WL: $\lambda_p = 517.3\text{nm}$ FWHM=34.9nm
 Render Index: Ra=0.0 CRI=3.0 TM30: Rf=1 Rg=10
 R1 =0 R2 =0 R3 =0 R4 =0 R5 =0 R6 =0 R7 =0
 R8 =0 R9 =0 R10=0 R11=0 R12=0 R13=0 R14=42 R15=0

Photo Parameters:

Flux = 71.62 lm Eff. : 38.97 lm/W Fe = 157.2 mW Scotopic: 217.6 S/P: 3.0381

Electrical parameters:

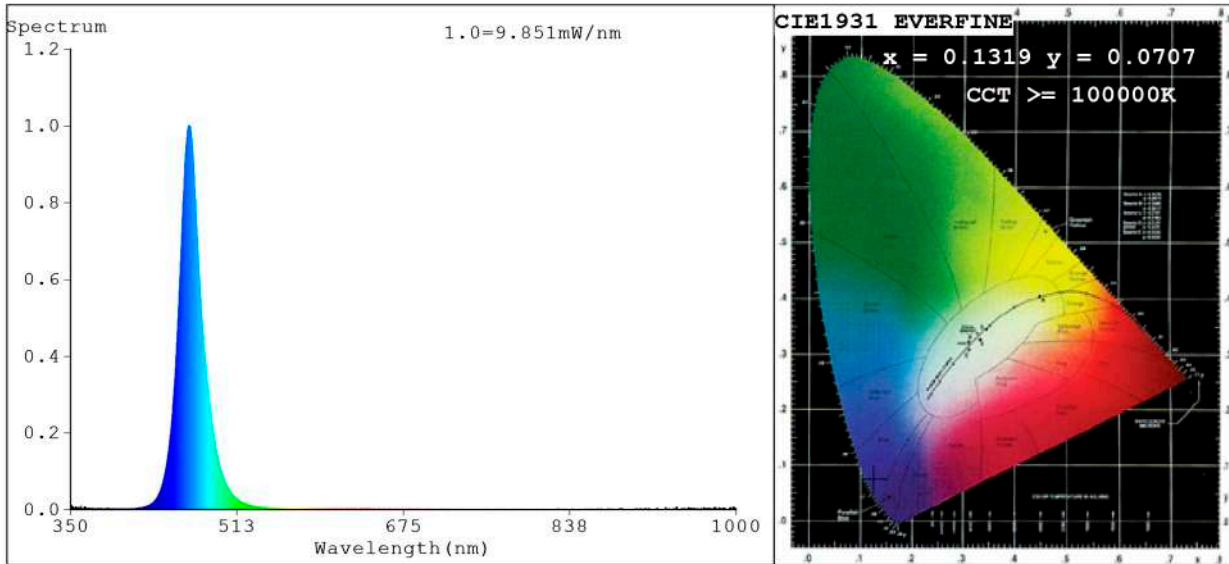
V = 11.998 V I = 0.1532 A P = 1.838 W PF = 1.000

Status: Integral T = 5000 ms Ip = 40076 (61%)

Model: Ecoled Esmeralda verde
 Tester: Sergio Carneros
 Temperature: 21 Deg
 Manufacturer: Luz Negra S.L

Number: 30.015
 Date: 25-5-2021
 Humidity: 57%
 Remarks: 100cm de tira flexible

Spectrum Test Report



Color Parameters:

Chromaticity Coordinate: $x=0.1319$ $y=0.0707$ / $u'=0.1472$ $v'=0.1776$
 CCT=100000K (Duv=0.1513) Dominant WL:Ld =470.3nm Purity=95.9%
 Ratio:R=0.7% G=19.4% B=80.0%;; Peak WL:Lp=466.6nm FWHM=23.1nm
 Render Index:Ra=0.9 CRI=0.5 TM30:Rf=0 Rg=-79
 R1 =0 R2 =0 R3 =0 R4 =0 R5 =7 R6 =0 R7 =0
 R8 =0 R9 =0 R10=0 R11=0 R12=0 R13=0 R14=0 R15=3

Photo Parameters:

Flux = 21.34 lm Eff. : 10.71 lm/W Fe = 281.9 mW Scotopic:310.5 S/P:14.552

Electrical parameters:

V = 11.998 V I = 0.1660 A P = 1.992 W PF = 1.000

Status: Integral T = 2000 ms Ip = 35264 (54%)

Model:Ecoled Esmeralda azul
 Tester:Sergio Carneros
 Temperature:21Deg
 Manufacturer:Luz Negra S.L

Number: 30.015
 Date:25-5-2021
 Humidity:57%
 Remarks:100cm de tira flexible