

## LOW BRIGHTNESS

## ESMERALDA

## FLEXIBLE STRIP

Ref: 30.015

RGB

### RGB flexible strip "BASIC"

IP65 with 30 leds/metre 5050SMD.

#### 10mm PCB

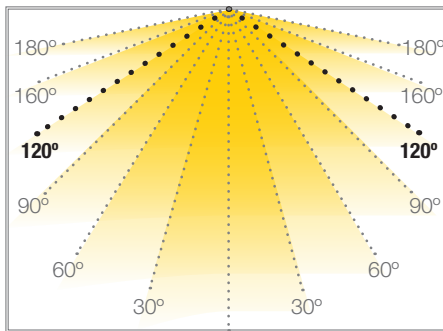
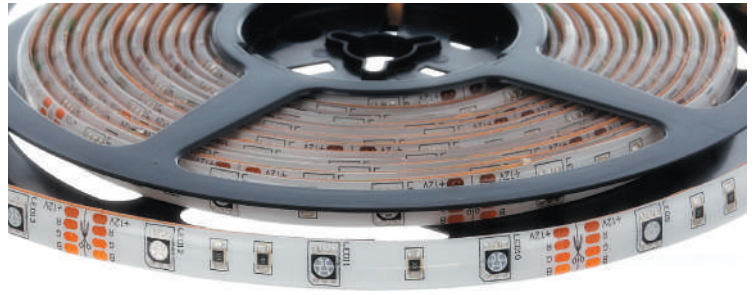
Daily recommended use: 18h

Maximum connection in open circuit: 7.5m

Maximum connection in closed circuit: 15m

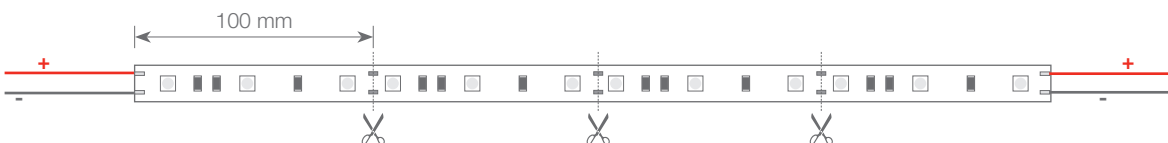
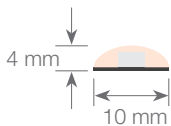
Estimated lifespan: 30000h \*

\* Depending on the dissipation of the profile, the daily working hours and the external environmental working temperature

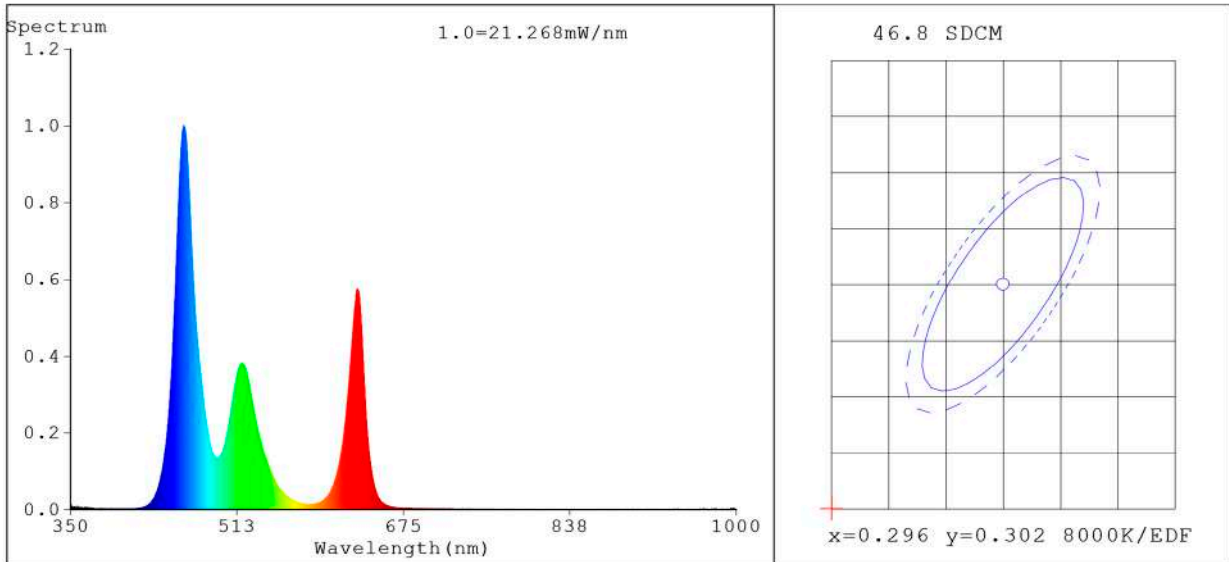


Power (W)	7.2W/m
Voltage (V)	12V
Led type	SMD5050
Lumens <sup>(white)</sup>	221 Lm/m
CRI	>30
Light emission	120°
Waterproofing	IP65
N° leds/m	30
Measurements	5000x10x4mm
Cutable	every 100mm
PCB	10mm
Working temperature	-20°C / +40°C
Sequencer	nor included
Apt for	indoor/outdoor
Packaging	1 roll/5m
Guarantee	2 years

Approved by: 



**Spectrum Test Report**



**Color Parameters:**

Chromaticity Coordinate:  $x=0.2349$   $y=0.2176$  /  $u'=0.1828$   $v'=0.3809$   
 CCT=100000K (Duv=-0.0122) Dominant WL:Ld =473.4nm Purity=45.0%  
 Ratio:R=22.8% G=62.7% B=14.4% ; Peak WL:Lp=460.5nm FWHM=21.0nm  
 Render Index:Ra=41.8 CRI=37.2 TM30:Rf=41 Rg=120  
 R1 =20 R2 =47 R3 =70 R4 =47 R5 =44 R6 =47 R7 =59  
 R8 =0 R9 =0 R10=0 R11=33 R12=52 R13=22 R14=78 R15=0

**Photo Parameters:**

Flux = 220.7 lm Eff. : 32.62 lm/W Fe = 1.100 W Scotopic:977.72 S/P:4.4304

**Electrical parameters:**

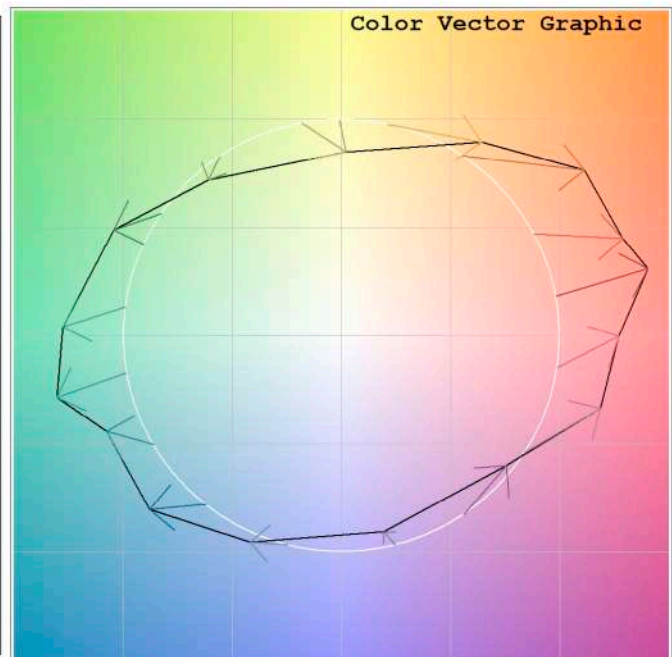
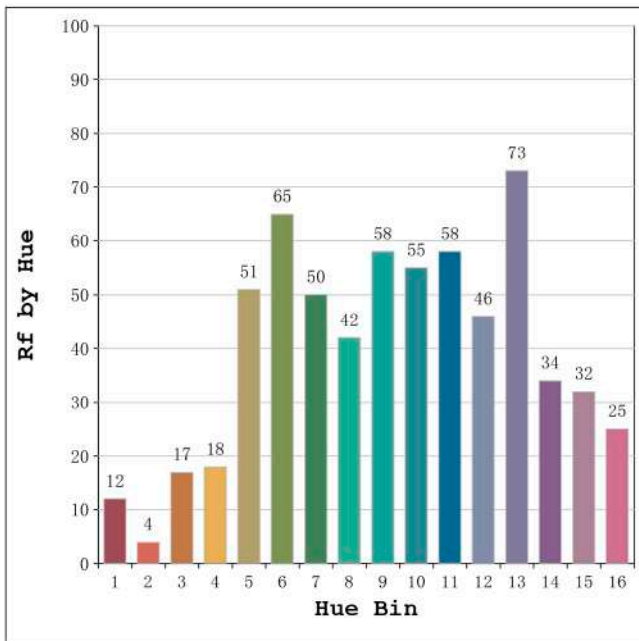
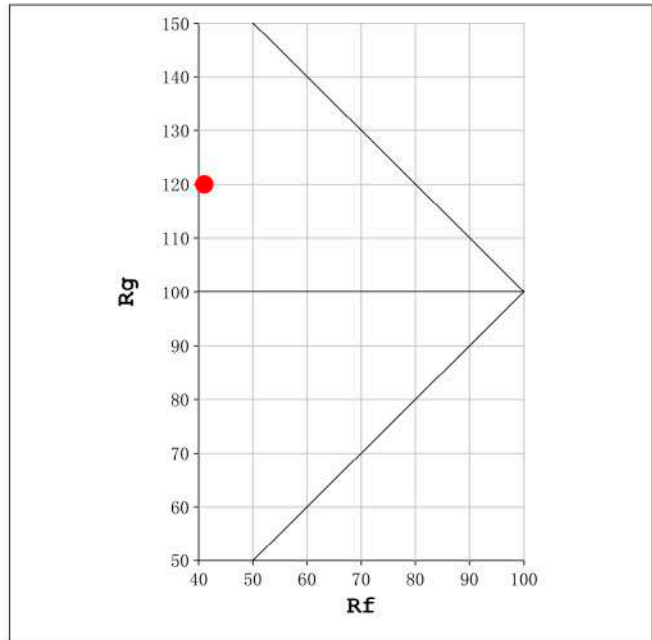
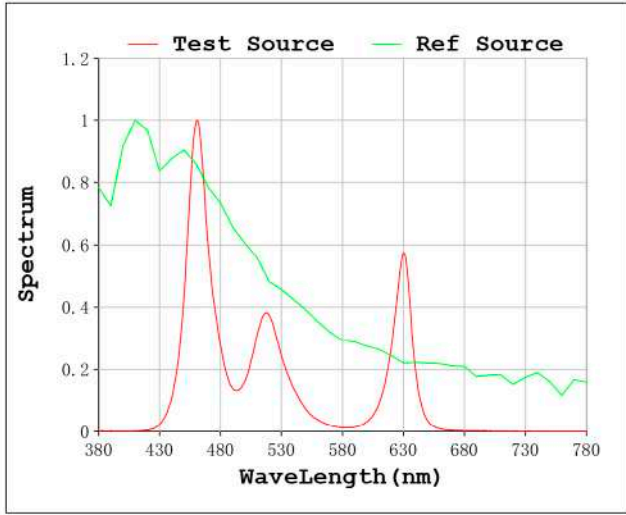
V = 11.998 V I = 0.5639 A P = 6.766 W PF = 1.000

Status: Integral T = 1440 ms Ip = 49292 (75%)

Model:Ecoled Esmeralda  
 Tester:Sergio Carneros  
 Temperature:25Deg  
 Manufacturer:Luz Negra S.L

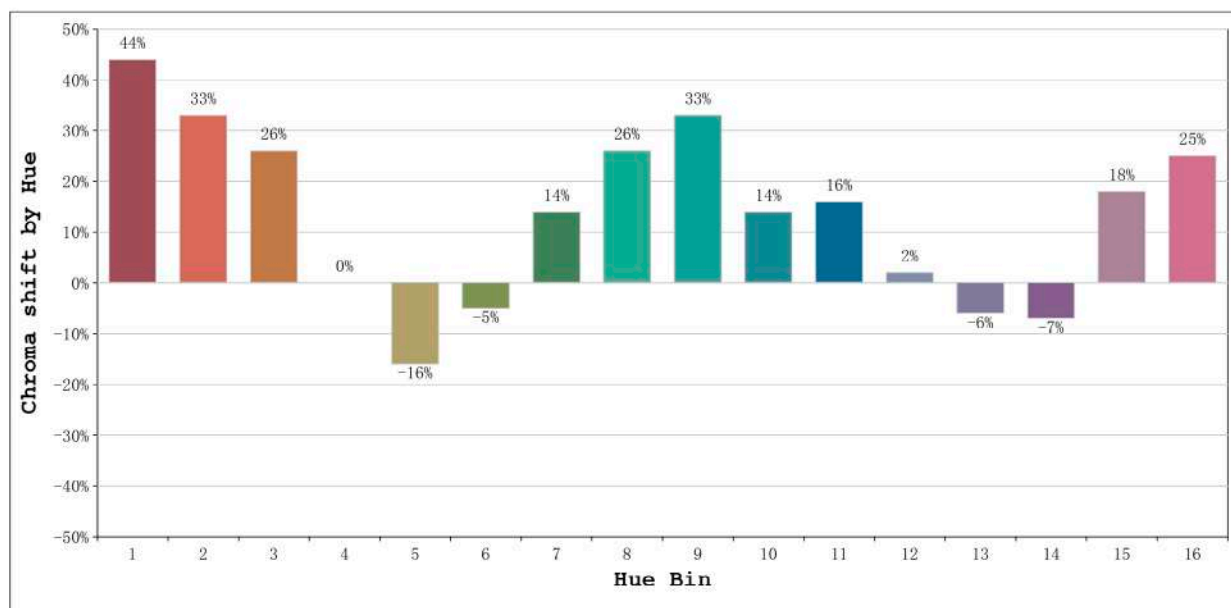
Number:30.015  
 Date:25-5-2021  
 Humidity:57%  
 Remarks:100cm de tira flexible

Rf: 41      CCT: 100000 K      u': 0.1828  
Rg: 120      Duv: -0.0122      v': 0.3809



Model:Ecoled Esmeralda  
Tester:Sergio Carneros  
Temperature:25Deg  
Manufacturer:Luz Negra S.L

Number:30.015  
Date:25-5-2021  
Humidity:57%  
Remarks:100cm de tira flexible

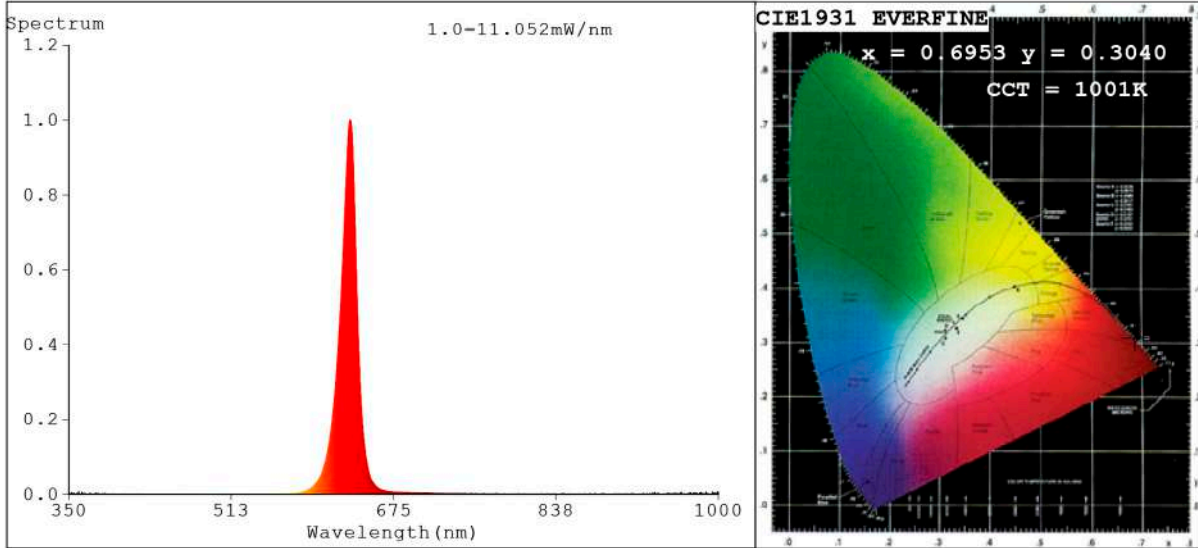


Hue Bin	Hue Angle	Rf	Graphic shift(%)	
			Chroma	Hue
1	0.0° - 22.5°	12	44	4
2	22.5° - 45.0°	4	33	-23
3	45.0° - 67.5°	17	26	-49
4	67.5° - 90.0°	18	0	-43
5	90.0° - 112.5°	51	-16	-17
6	112.5° - 135.0°	65	-5	10
7	135.0° - 157.5°	50	14	18
8	157.5° - 180.0°	42	26	15
9	180.0° - 202.5°	58	33	5
10	202.5° - 225.0°	55	14	-16
11	225.0° - 247.5°	58	16	-19
12	247.5° - 270.0°	46	2	-16
13	270.0° - 292.5°	73	-6	-3
14	292.5° - 315.0°	34	-7	29
15	315.0° - 337.5°	32	18	36
16	337.5° - 360.0°	25	25	20

Model:Ecoled Esmeralda  
 Tester:Sergio Carneros  
 Temperature:25Deg  
 Manufacturer:Luz Negra S.L

Number:30.015  
 Date:25-5-2021  
 Humidity:57%  
 Remarks:100cm de tira flexible

**Spectrum Test Report**



**Color Parameters:**

Chromaticity Coordinate:  $x=0.6953$   $y=0.3040$  /  $u'=0.5289$   $v'=0.5204$   
 CCT=1001K (Duv=-0.0814) Dominant WL:  $L_d = 622.3\text{nm}$  Purity=99.8%  
 Ratio: R=96.1% G=3.8% B=0.0% ; Peak WL:  $L_p = 631.3\text{nm}$  FWHM=16.8nm  
 Render Index: Ra=26.7 CRI=32.5 TM30: Rf=13 Rg=-1  
 R1 =7 R2 =78 R3 =31 R4 =0 R5 =2 R6 =90 R7 =6  
 R8 =0 R9 =0 R10=72 R11=0 R12=79 R13=30 R14=60 R15=0

**Photo Parameters:**

Flux = 44.67 lm Eff. : 19.81 lm/W  $F_e = 229.9$  mW Scotopic: 2.3786 S/P: 0.05325

**Electrical parameters:**

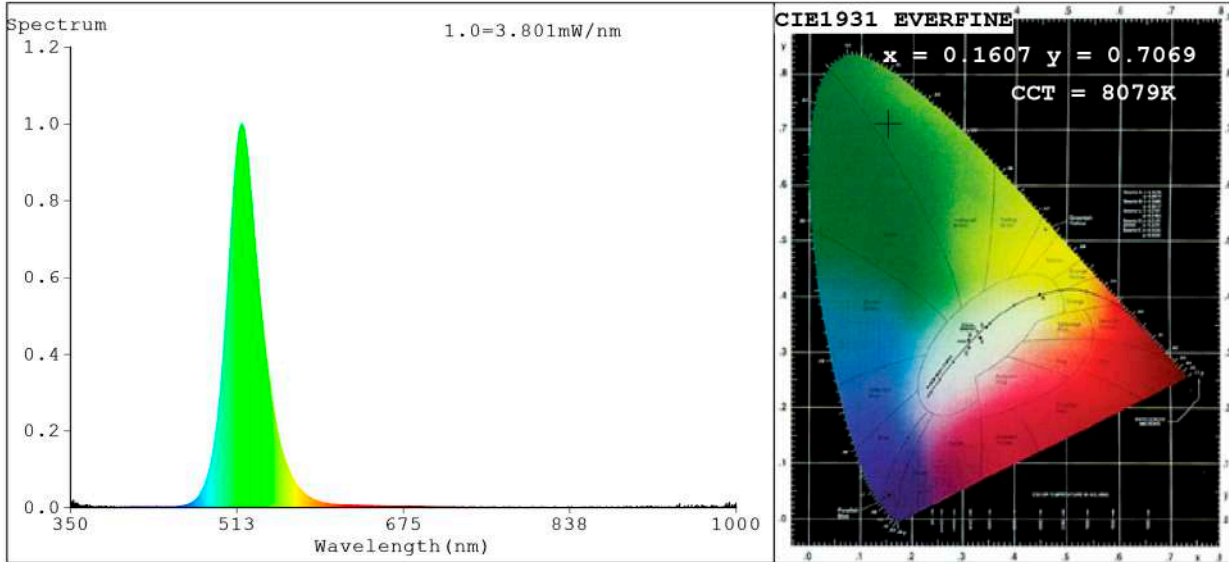
V = 11.998 V I = 0.1879 A P = 2.254 W PF = 1.000

Status: Integral T = 2000 ms  $I_p = 34028$  (52%)

Model: Ecoled Esmeralda rojo  
 Tester: Sergio Carneros  
 Temperature: 21Deg  
 Manufacturer: Luz Negra S.L

Number: 30.015  
 Date: 25-5-2021  
 Humidity: 57%  
 Remarks: 100cm de tira flexible

**Spectrum Test Report**



**Color Parameters:**

Chromaticity Coordinate:  $x=0.1607$   $y=0.7069$  /  $u'=0.0576$   $v'=0.5700$   
 CCT=8079K (Duv=0.1580) Dominant WL:  $L_d = 523.7\text{nm}$  Purity=75.2%  
 Ratio: R=0.5% G=96.4% B=3.2% ; Peak WL:  $L_p = 517.3\text{nm}$  FWHM=34.9nm  
 Render Index:  $R_a = 0.0$  CRI=3.0 TM30:  $R_f = 1$   $R_g = 10$   
 R1 = 0 R2 = 0 R3 = 0 R4 = 0 R5 = 0 R6 = 0 R7 = 0  
 R8 = 0 R9 = 0 R10 = 0 R11 = 0 R12 = 0 R13 = 0 R14 = 42 R15 = 0

**Photo Parameters:**

Flux = 71.62 lm Eff. : 38.97 lm/W Fe = 157.2 mW Scotopic: 217.6 S/P: 3.0381

**Electrical parameters:**

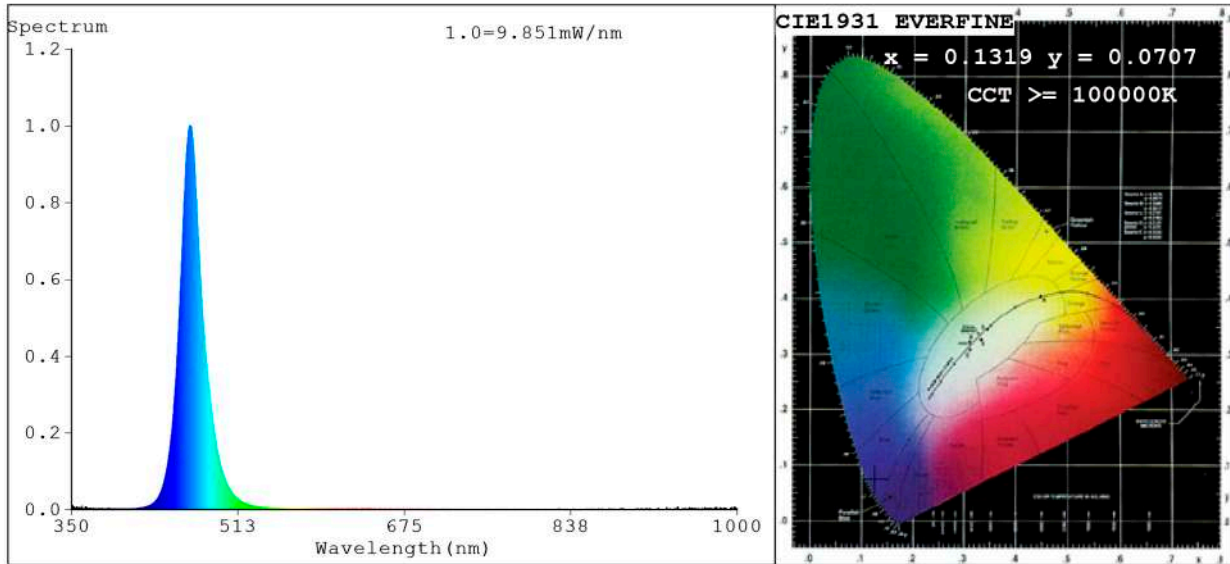
V = 11.998 V I = 0.1532 A P = 1.838 W PF = 1.000

Status: Integral T = 5000 ms Ip = 40076 (61%)

Model: Ecoled Esmeralda verde  
 Tester: Sergio Carneros  
 Temperature: 21Deg  
 Manufacturer: Luz Negra S.L

Number: 30.015  
 Date: 25-5-2021  
 Humidity: 57%  
 Remarks: 100cm de tira flexible

**Spectrum Test Report**



**Color Parameters:**

Chromaticity Coordinate:  $x=0.1319$   $y=0.0707$  /  $u'=0.1472$   $v'=0.1776$   
 CCT=100000K (Duv=0.1513) Dominant WL:Ld =470.3nm Purity=95.9%  
 Ratio:R=0.7% G=19.4% B=80.0%;; Peak WL:Lp=466.6nm FWHM=23.1nm  
 Render Index:Ra=0.9 CRI=0.5 TM30:Rf=0 Rg=-79  
 R1 =0 R2 =0 R3 =0 R4 =0 R5 =7 R6 =0 R7 =0  
 R8 =0 R9 =0 R10=0 R11=0 R12=0 R13=0 R14=0 R15=3

**Photo Parameters:**

Flux = 21.34 lm Eff. : 10.71 lm/W Fe = 281.9 mW Scotopic:310.5 S/P:14.552

**Electrical parameters:**

V = 11.998 V I = 0.1660 A P = 1.992 W PF = 1.000

Status: Integral T = 2000 ms Ip = 35264 (54%)

Model:Ecoled Esmeralda azul  
 Tester:Sergio Carneros  
 Temperature:21Deg  
 Manufacturer:Luz Negra S.L

Number: 30.015  
 Date:25-5-2021  
 Humidity:57%  
 Remarks:100cm de tira flexible