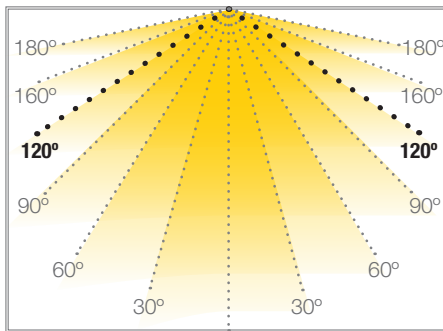


## MEDIA LUMINOSIDAD

Ref: 33.008 4200°K  
 Ref: 33.009 3200°K  
 Ref: 33.010 2850°K

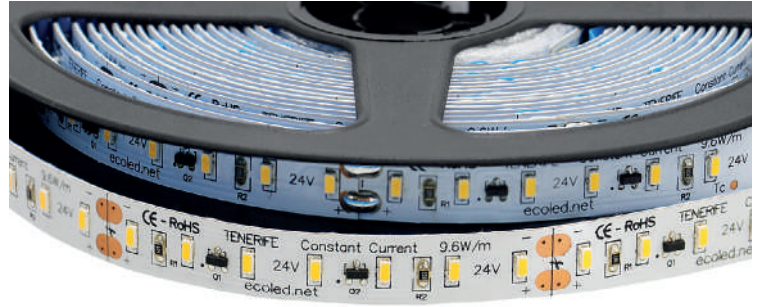
Tira flexible serie "PREMIUM RETAIL"  
 IP20 con 112 leds/metro 3014SMD.  
 Requiere uso de led profile para disipación.  
**Cinta térmica disipadora incluida.**  
**PCB 10mm**  
**Estabilizador de corriente.**  
**CRI>90**

Uso diario máximo recomendado: 18h  
 Conexión máxima en circuito abierto: 10m  
 Conexión máxima en circuito cerrado: 20m



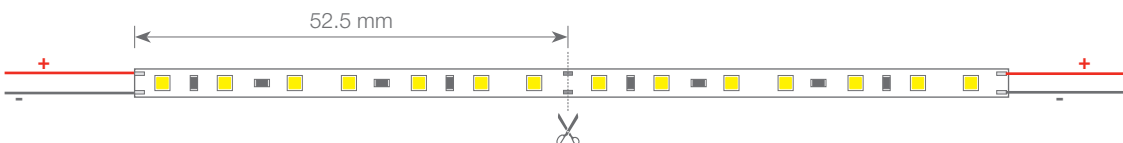
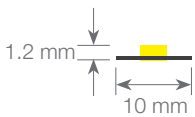
## TENERIFE

## TIRAS FLEXIBLES

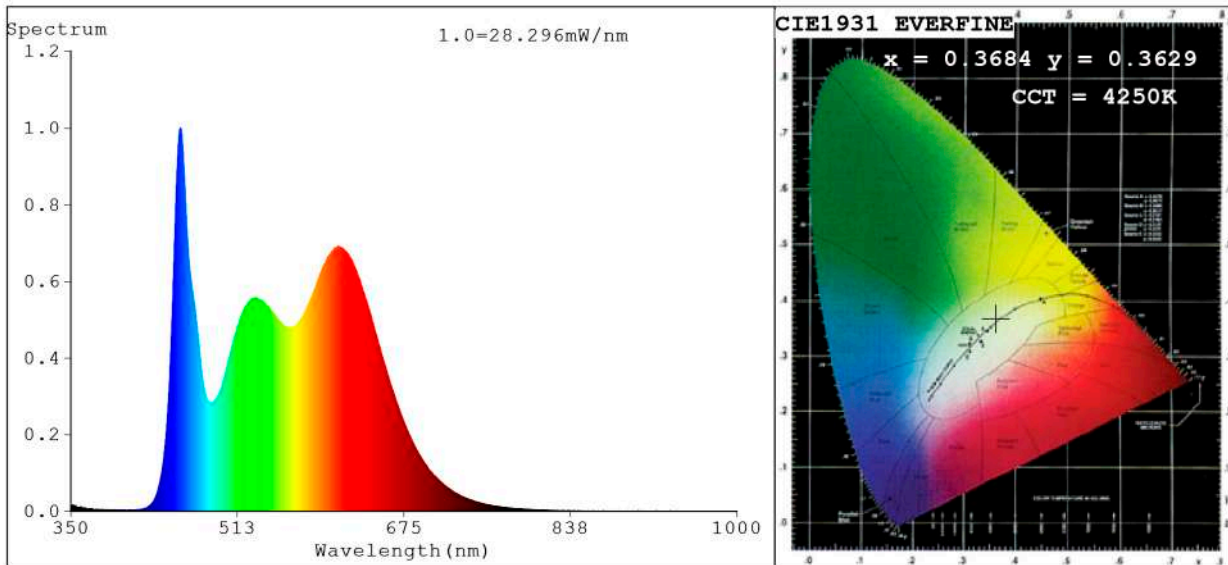


Potencia (W)	9.6W/m
Voltaje (V)	24V
Tipo Led	SMD3014
Lumens (4200°K)	960 Lm/m
Lumens (3200°K)	900 Lm/m
Lumens (2850°K)	864 Lm/m
CRI	>90
Emisión de luz	120°
Estanqueidad (IP)	IP20
Nº leds/m	112
Medidas	5000x10x1.2mm
Cortable	cada 62.5mm
PCB	10mm
Temperatura trabajo	-40°C / +60°C
Apto para	interior
Embalaje	1 rollo/5m
Garantía	4 años

Aprobado por: CE ROHS COMPLIANT



**Spectrum Test Report**



**Color Parameters:**

Chromaticity Coordinate:  $x=0.3684$   $y=0.3629$  /  $u'=0.2227$   $v'=0.4935$   
 CCT=4250K (Duv=-0.0029) Dominant WL:Ld =580.2nm Purity=19.4%  
 Ratio:R=20.6% G=74.5% B=4.9%; Peak WL:Lp=457.1nm FWHM=23.6nm  
 Render Index:Ra=94.0 CRI=91.9 TM30:Rf=89 Rg=99  
 R1 =95 R2 =96 R3 =98 R4 =96 R5 =95 R6 =92 R7 =91  
 R8 =89 R9 =79 R10=96 R11=98 R12=69 R13=95 R14=99 R15=96

**Photo Parameters:**

Flux = 1093 lm Eff. : 115.05 lm/W Fe = 3.634 W Scotopic:2141.7 S/P:1.9603

**Electrical parameters:**

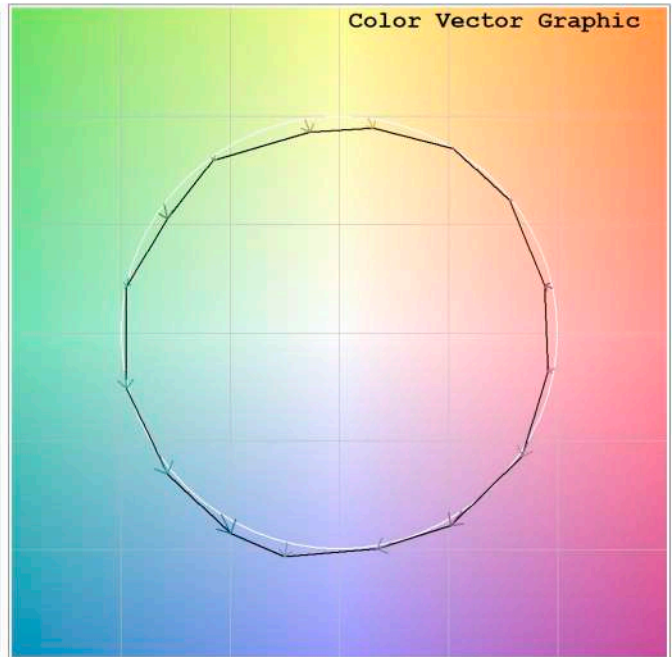
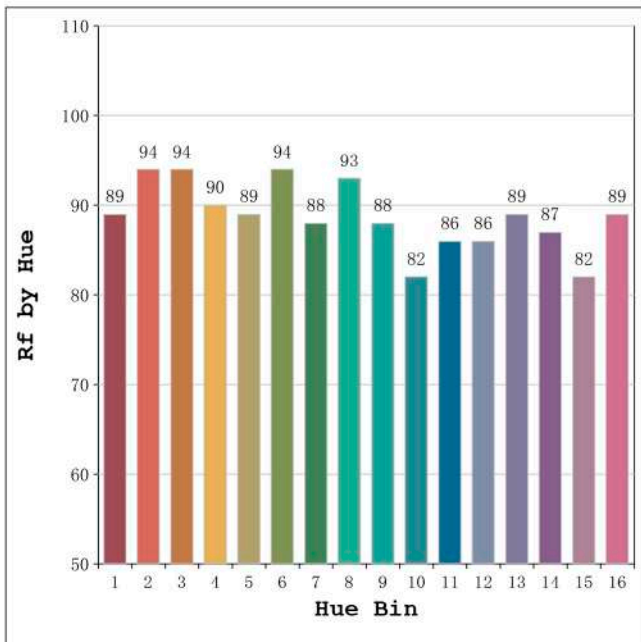
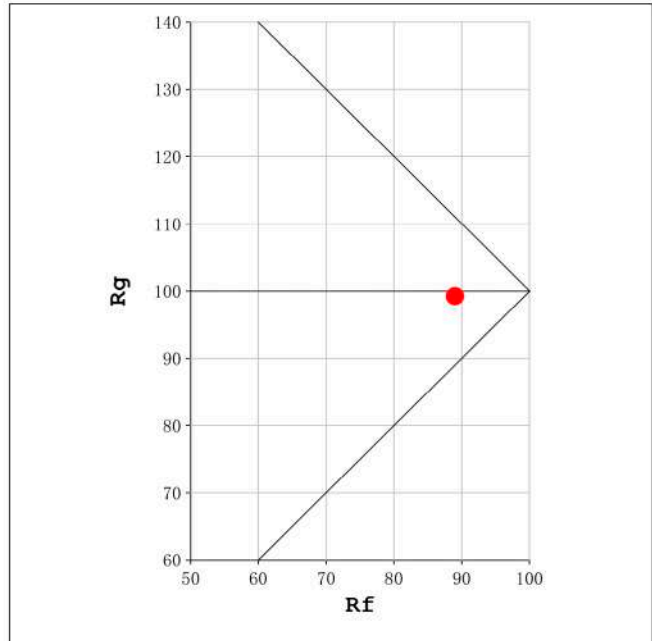
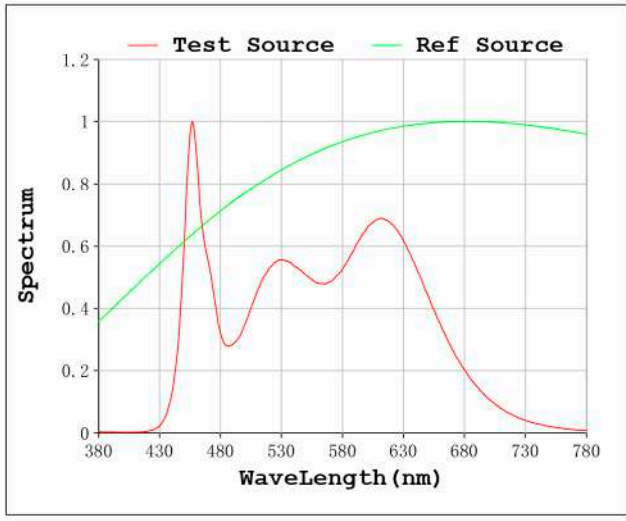
V = 23.998 V I = 0.3957 A P = 9.496 W PF = 1.000

Status: Integral T = 992 ms Ip = 47398 (72%)

Model:Ecoled Tenerife 4200K  
 Tester:Sergio Carneros  
 Temperature:21Deg  
 Manufacturer:Luz Negra S.L

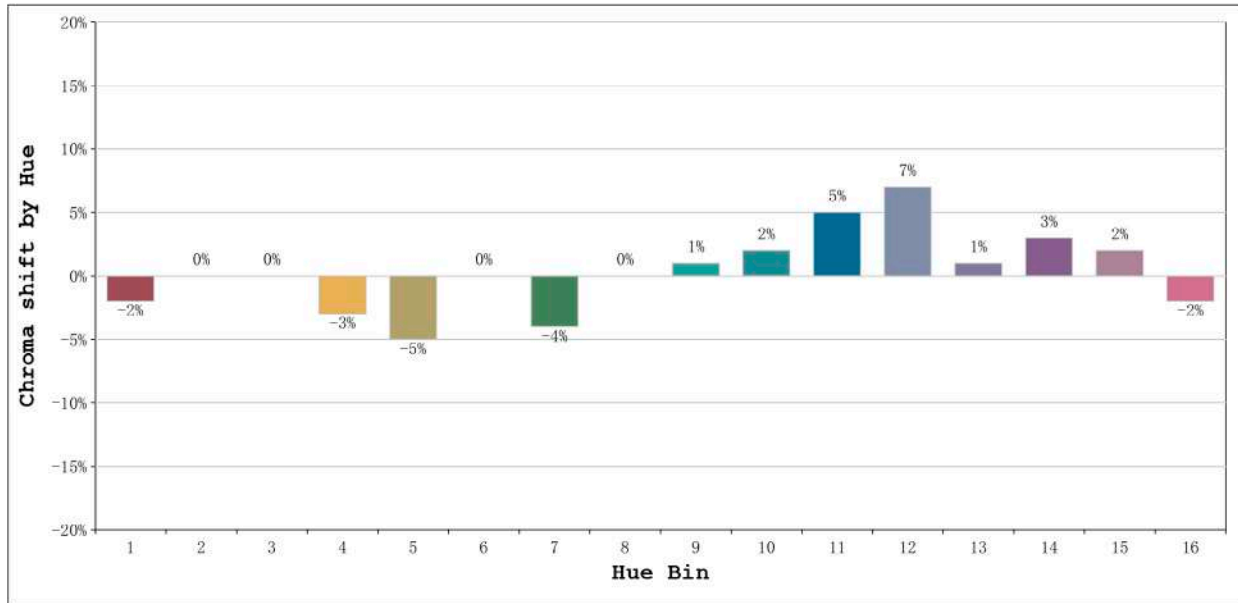
Number: 33.008  
 Date:25-5-2021  
 Humidity:57%  
 Remarks:100cm de tira flexible

Rf: 89 CCT: 4250 K u': 0.2227  
Rg: 99 Duv: -0.0029 v': 0.4935



Model:Ecoled Tenerife 4200K  
Tester:Sergio Carneros  
Temperature:21Deg  
Manufacturer:Luz Negra S.L

Number: 33.008  
Date:25-5-2021  
Humidity:57%  
Remarks:100cm de tira flexible

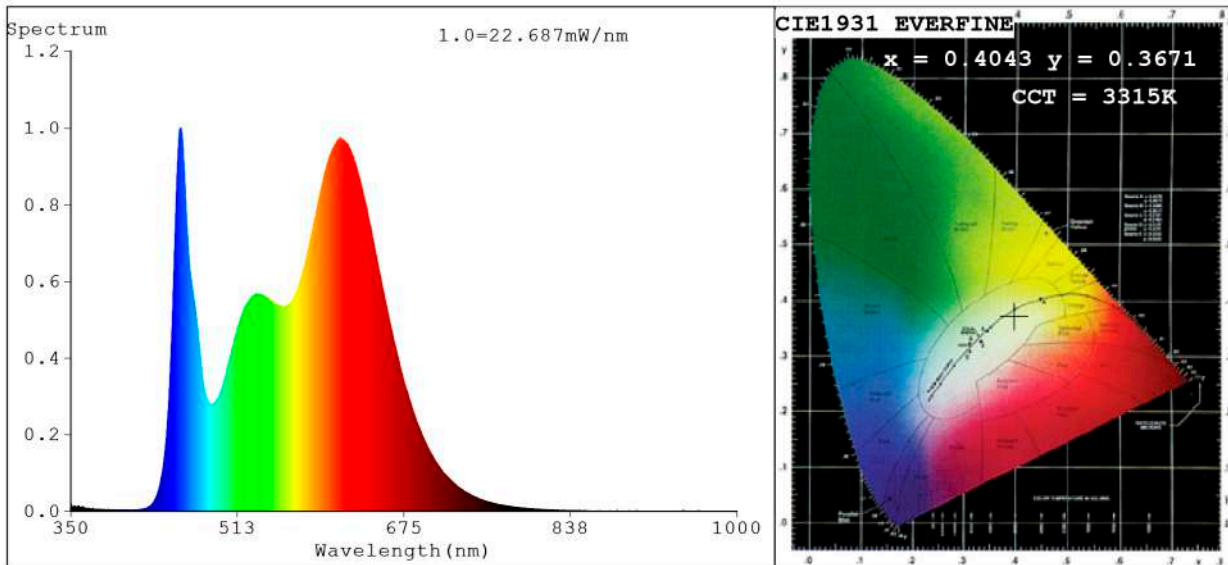


			Graphic shift(%)	
Hue Bin	Hue Angle	Rf	Chroma	Hue
1	0.0° - 22.5°	89	-2	2
2	22.5° - 45.0°	94	0	1
3	45.0° - 67.5°	94	0	0
4	67.5° - 90.0°	90	-3	-2
5	90.0° - 112.5°	89	-5	0
6	112.5° - 135.0°	94	0	2
7	135.0° - 157.5°	88	-4	5
8	157.5° - 180.0°	93	0	4
9	180.0° - 202.5°	88	1	7
10	202.5° - 225.0°	82	2	10
11	225.0° - 247.5°	86	5	9
12	247.5° - 270.0°	86	7	0
13	270.0° - 292.5°	89	1	-6
14	292.5° - 315.0°	87	3	-7
15	315.0° - 337.5°	82	2	-6
16	337.5° - 360.0°	89	-2	-1

Model:Ecoled Tenerife 4200K  
 Tester:Sergio Carneros  
 Temperature:21Deg  
 Manufacturer:Luz Negra S.L

Number: 33.008  
 Date:25-5-2021  
 Humidity:57%  
 Remarks:100cm de tira flexible

**Spectrum Test Report**



**Color Parameters:**

Chromaticity Coordinate: x=0.4043 y=0.3671/u'=0.2451 v'=0.5009  
 CCT=3315K(Duv=-0.0104) Dominant WL:Ld =587.2nm Purity=31.5%  
 Ratio:R=24.8% G=71.1% B=4.1%; Peak WL:Lp=457.1nm FWHM=23.5nm  
 Render Index:Ra=90.9 CRI=88.9 TM30:Rf=89 Rg=103  
 R1 =94 R2 =92 R3 =93 R4 =98 R5 =93 R6 =85 R7 =87  
 R8 =85 R9 =74 R10=86 R11=94 R12=73 R13=92 R14=98 R15=98

**Photo Parameters:**

Flux = 1030 lm Eff. : 106.25 lm/W Fe = 3.505 W Scotopic:1751.5 S/P:1.7004

**Electrical parameters:**

V = 23.998 V I = 0.4040 A P = 9.695 W PF = 1.000

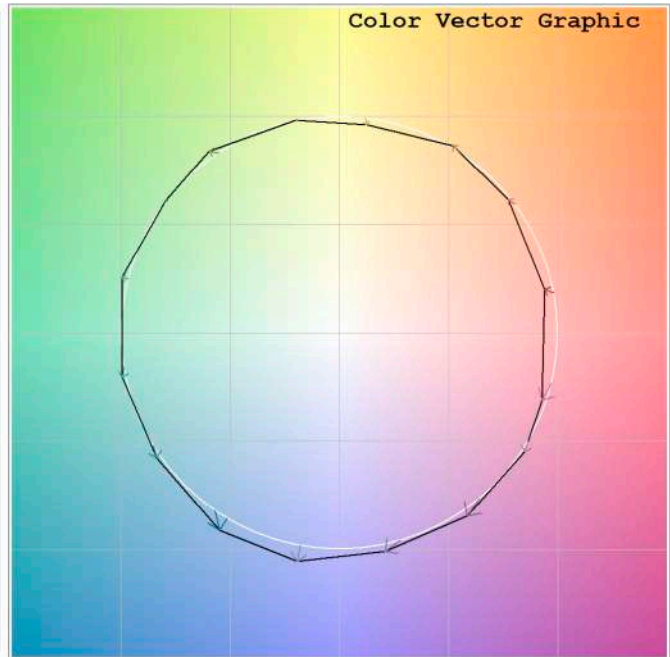
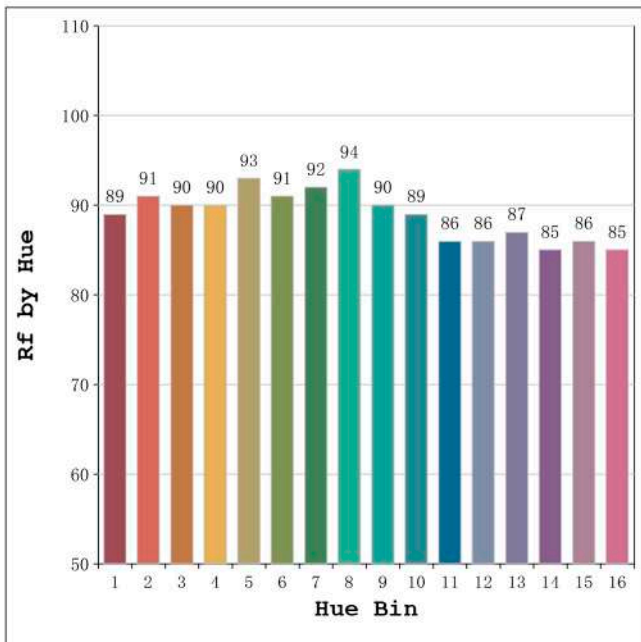
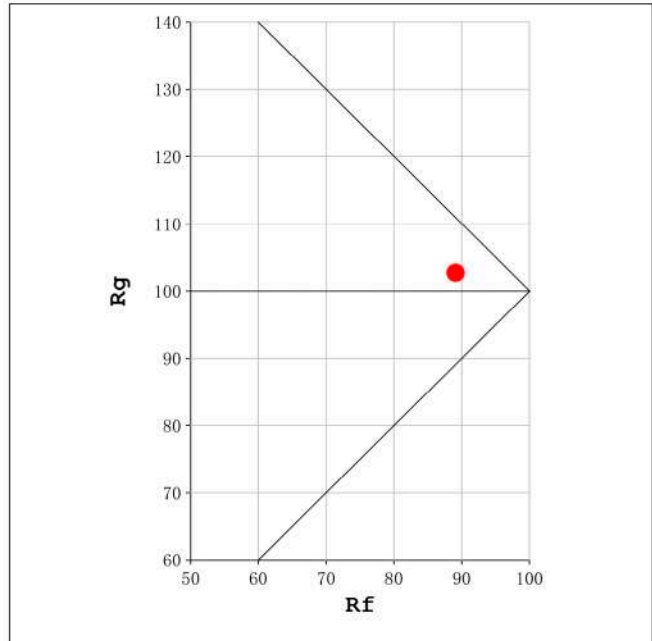
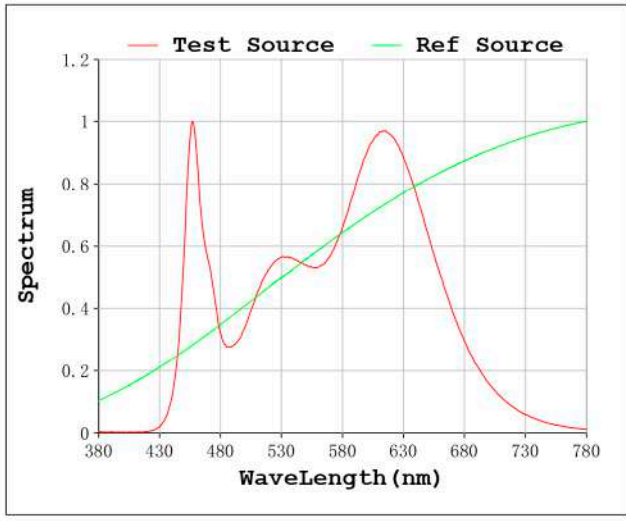
WHITE:OUT

Status: Integral T = 1000 ms Ip = 40526 (62%)

Model:Ecoled Tenerife 3200K  
 Tester:Sergio Carneros  
 Temperature:25Deg  
 Manufacturer:Luz Negra S.L

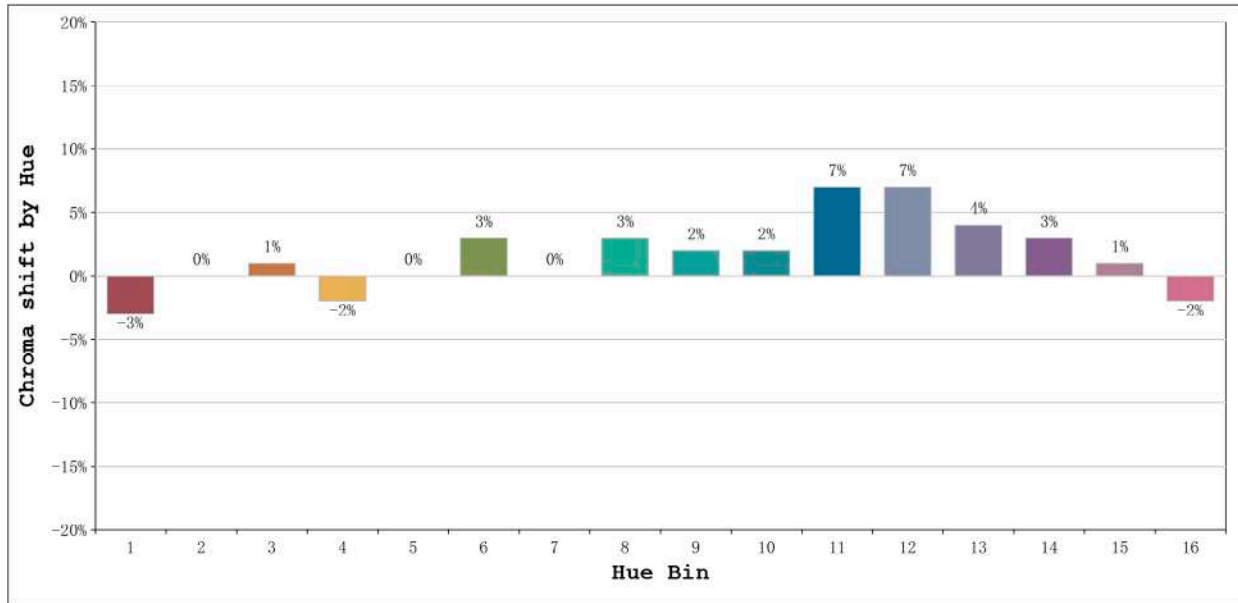
Number: 33.009  
 Date:25-5-2021  
 Humidity:57%  
 Remarks:100cm de tira flexible

Rf: 89 CCT: 3315 K u': 0.2451  
Rg: 103 Duv: -0.0104 v': 0.5009



Model:Ecoled Tenerife 3200K  
Tester:Sergio Carneros  
Temperature:25Deg  
Manufacturer:Luz Negra S.L

Number: 33.009  
Date:25-5-2021  
Humidity:57%  
Remarks:100cm de tira flexible

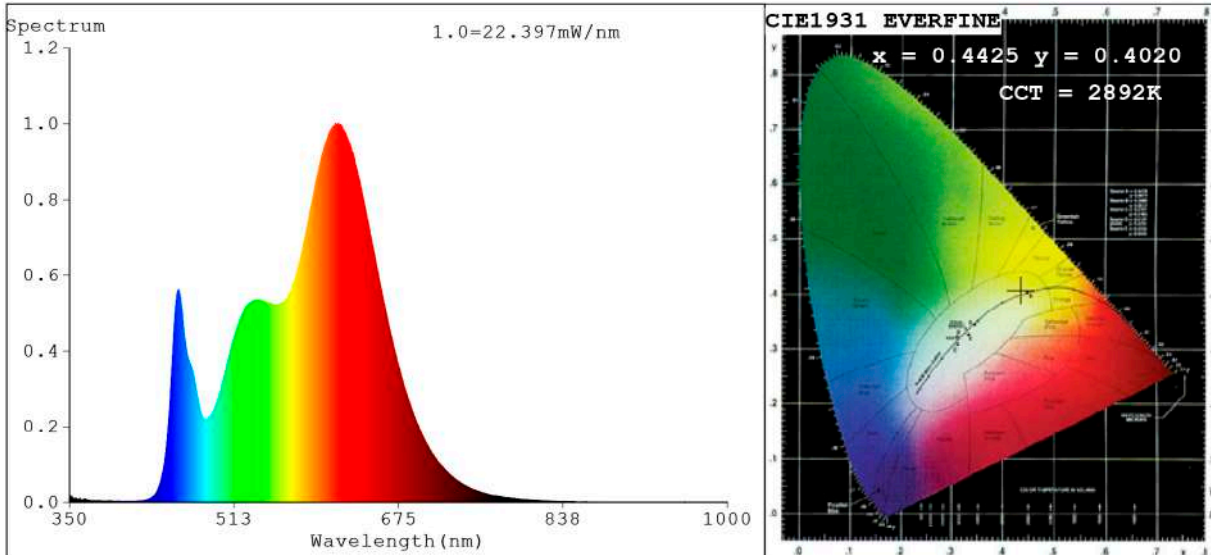


Hue Bin	Hue Angle	Rf	Graphic shift(%)	
			Chroma	Hue
1	0.0° - 22.5°	89	-3	2
2	22.5° - 45.0°	91	0	3
3	45.0° - 67.5°	90	1	4
4	67.5° - 90.0°	90	-2	0
5	90.0° - 112.5°	93	0	1
6	112.5° - 135.0°	91	3	3
7	135.0° - 157.5°	92	0	1
8	157.5° - 180.0°	94	3	0
9	180.0° - 202.5°	90	2	5
10	202.5° - 225.0°	89	2	6
11	225.0° - 247.5°	86	7	7
12	247.5° - 270.0°	86	7	0
13	270.0° - 292.5°	87	4	-7
14	292.5° - 315.0°	85	3	-8
15	315.0° - 337.5°	86	1	-4
16	337.5° - 360.0°	85	-2	-7

Model:Ecoled Tenerife 3200K  
 Tester:Sergio Carneros  
 Temperature:25Deg  
 Manufacturer:Luz Negra S.L

Number: 33.009  
 Date:25-5-2021  
 Humidity:57%  
 Remarks:100cm de tira flexible

**Spectrum Test Report**



**Color Parameters:**

Chromaticity Coordinate:  $x=0.4425$   $y=0.4020$  /  $u'=0.2551$   $v'=0.5214$   
 CCT=2892K (Duv=-0.0015) Dominant WL:Ld =583.8nm Purity=53.5%  
 Ratio:R=26.1% G=70.9% B=3.0%;; Peak WL:Lp=615.7nm FWHM=141.4nm  
 Render Index:Ra=93.1 CRI=90.9 TM30:Rf=89 Rg=99  
 R1 =98 R2 =98 R3 =96 R4 =97 R5 =97 R6 =92 R7 =88  
 R8 =78 R9 =55 R10=98 R11=97 R12=80 R13=99 R14=99 R15=91

**Photo Parameters:**

Flux = 993.9 lm Eff. : 102.52 lm/W Fe = 3.242 W Scotopic:1430.7 S/P:1.4395

**Electrical parameters:**

V = 23.998 V I = 0.4040 A P = 9.695 W PF = 1.000

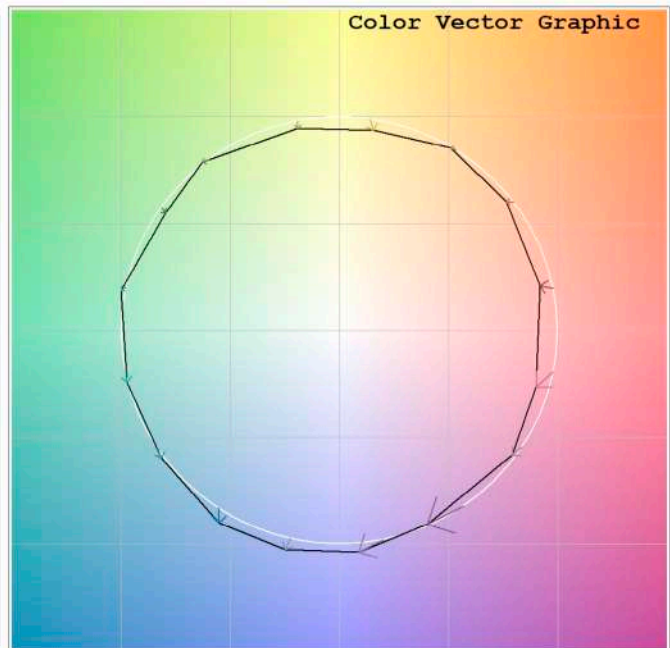
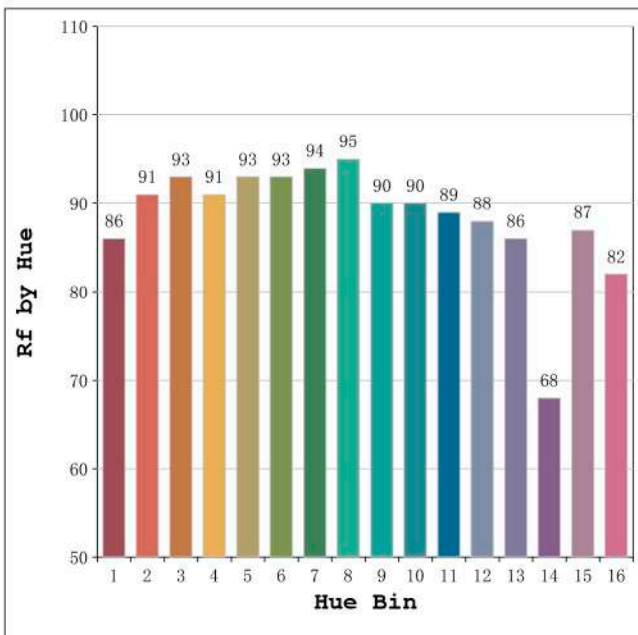
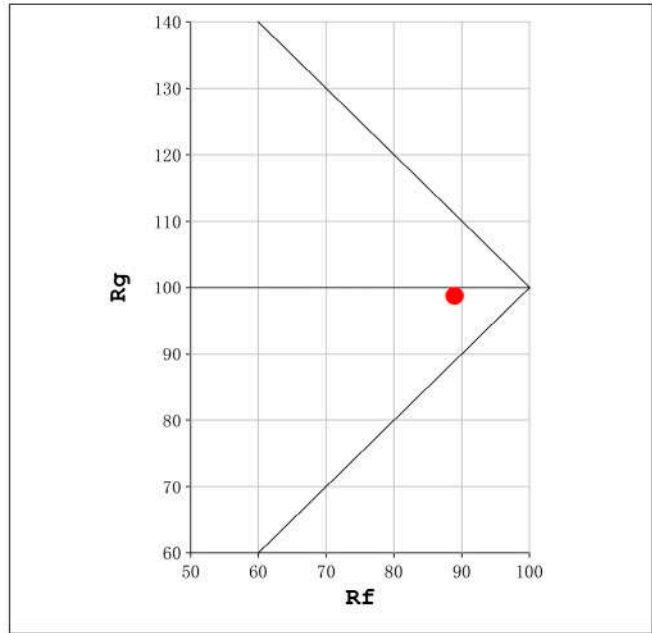
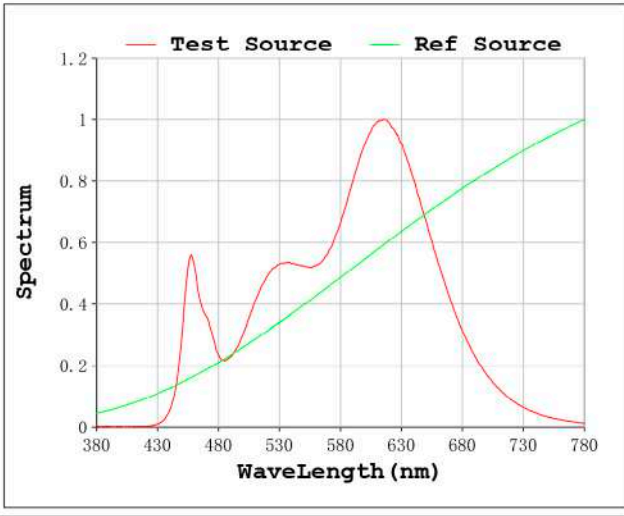
Status: Integral T = 1016 ms Ip = 44229 (67%)

Model:Ecoled Tenerife 2850  
 Tester:Sergio Carneros  
 Temperature:25Deg  
 Manufacturer:Luz Negra S.L

Number: 33.010  
 Date:25-5-2021  
 Humidity:57%  
 Remarks:100cm de tira flexible

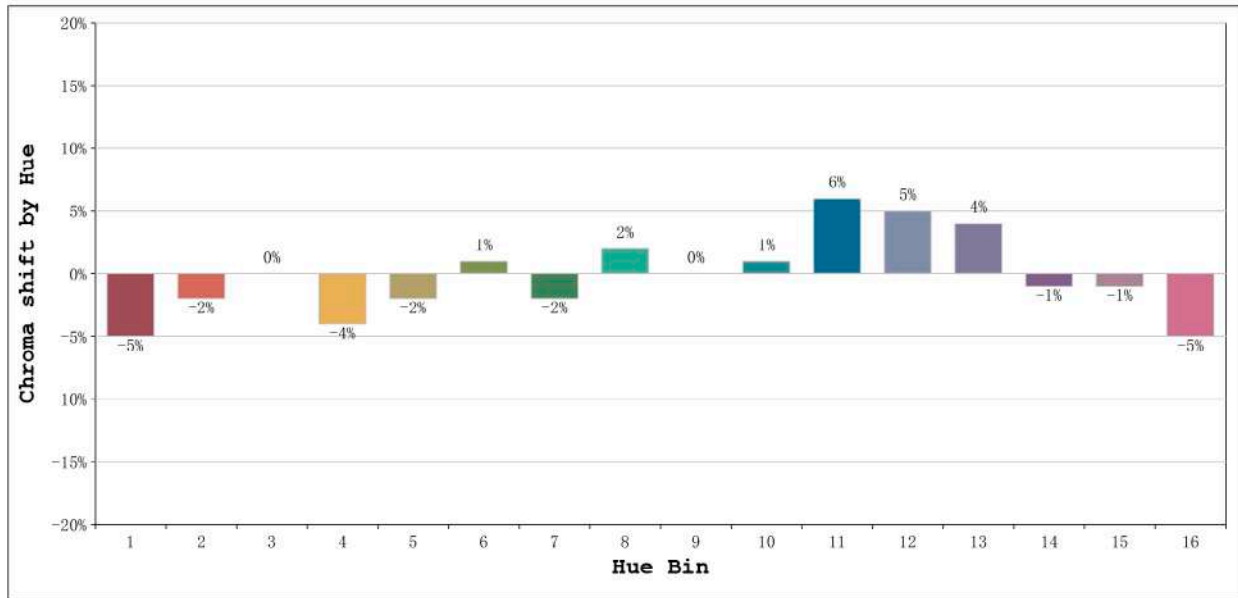


Rf: 89      CCT: 2892 K      u': 0.2551  
Rg: 99      Duv: -0.0015      v': 0.5214



Model:Ecoled Tenerife 2850  
Tester:Sergio Carneros  
Temperature:25Deg  
Manufacturer:Luz Negra S.L

Number: 33.010  
Date:25-5-2021  
Humidity:57%  
Remarks:100cm de tira flexible



Hue Bin	Hue Angle	Rf	Graphic shift(%)	
			Chroma	Hue
1	0.0° - 22.5°	86	-5	2
2	22.5° - 45.0°	91	-2	2
3	45.0° - 67.5°	93	0	3
4	67.5° - 90.0°	91	-4	-2
5	90.0° - 112.5°	93	-2	1
6	112.5° - 135.0°	93	1	3
7	135.0° - 157.5°	94	-2	1
8	157.5° - 180.0°	95	2	2
9	180.0° - 202.5°	90	0	5
10	202.5° - 225.0°	90	1	5
11	225.0° - 247.5°	89	6	4
12	247.5° - 270.0°	88	5	-1
13	270.0° - 292.5°	86	4	-11
14	292.5° - 315.0°	68	-1	-18
15	315.0° - 337.5°	87	-1	-5
16	337.5° - 360.0°	82	-5	-7

Model:Ecoled Tenerife 2850  
 Tester:Sergio Carneros  
 Temperature:25Deg  
 Manufacturer:Luz Negra S.L

Number: 33.010  
 Date:25-5-2021  
 Humidity:57%  
 Remarks:100cm de tira flexible