

## MEDIA LUMINOSIDAD

Ref: 32.014 6000°K  
 Ref: 32.015 4000°K  
 Ref: 32.016 2800°K

Tira flexible serie "PRO"

IP20 con 120 leds/metro 3014SMD.

Requiere uso de led profile para disipación.

**Tira flexible con iluminación lateral.**

**PCB 6mm**

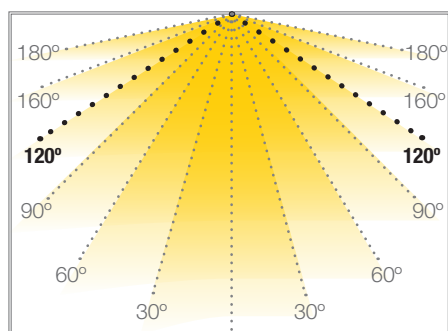
Uso diario máximo recomendado: 18h

Conexión máxima en circuito abierto: 7.5m

Conexión máxima en circuito cerrado: 15m

Vida útil: 50.000h\*

\*En función de la disipación del perfil, de las horas diarias trabajadas y de la temperatura externa ambiental de trabajo.



## GETAFE

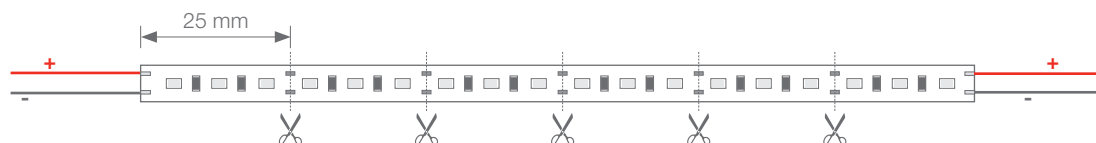
## TIRAS FLEXIBLES



<b>W 10</b>		<b>12V</b>				<b>18h máx.</b>
potencia	120°	voltaje	IP20	25 mm	interior	trabajo

Potencia (W)	10W/m
Voltaje (V)	12V
Tipo Led	SMD3014
Lumens (6000°K)	953 Lm/m
Lumens (4000°K)	946 Lm/m
Lumens (2800°K)	940 Lm/m
CRI	>75
Emisión de luz	120°
Estanqueidad (IP)	IP20
Nº leds/m	120
Medidas	5000x6x1.8mm
Cortable	cada 25mm
PCB	6mm
Temperatura trabajo	-25°C / +45°C
Apto para	interior
Embalaje	1 rollo/5m
Garantía	3 años

Aprobado por:

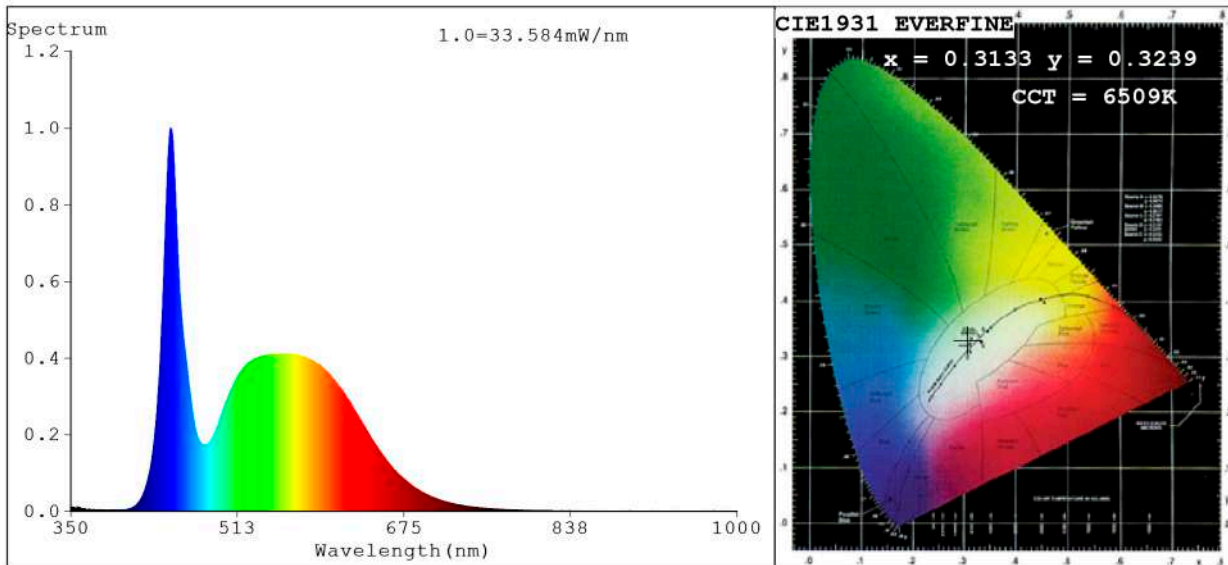


**BARCELONA**  
 C/ Carles Buhigues, 13  
 08420 Canovelles  
 Info@luznegra.net  
 Tel: +34 938 402 598

**MADRID**  
 C/ Adaptación, 27  
 28906 Getafe  
 centro@luznegra.net  
 Tel: +34 916 416 081

**PARIS**  
 113 Avenue Joffre  
 77450 Esbly  
 france@luznegra.net  
 Tel: +33 (0) 160 426 585

**Spectrum Test Report**



**Color Parameters:**

Chromaticity Coordinate:  $x=0.3133$   $y=0.3239$   $u'=0.2002$   $v'=0.4657$   
 CCT=6509K (Duv=0.0002) Dominant WL:Ld =485.4nm Purity=7.5%  
 Ratio:R=13.7% G=81.2% B=5.1%; Peak WL:Lp=447.5nm FWHM=19.3nm  
 Render Index:Ra=82.4 CRI=75.2 TM30:Rf=80 Rg=96  
 R1 =82 R2 =85 R3 =86 R4 =84 R5 =83 R6 =79 R7 =87  
 R8 =73 R9 =13 R10=64 R11=84 R12=58 R13=83 R14=92 R15=78

**Photo Parameters:**

Flux = 894.2 lm Eff. : 84.99 lm/W Fe = 2.920 W Scotopic:1955.2 S/P:2.1866

**Electrical parameters:**

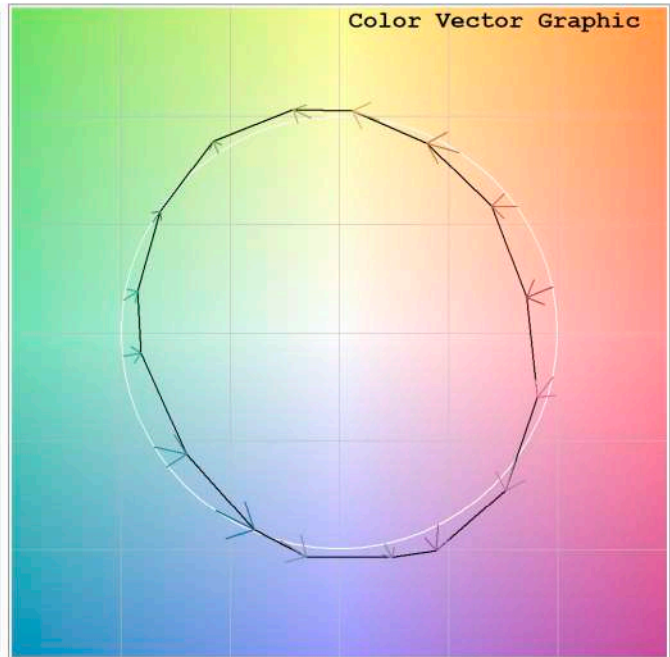
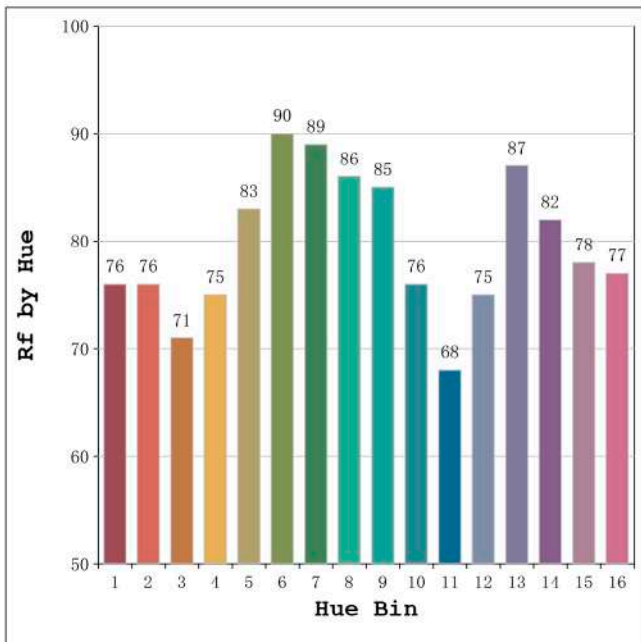
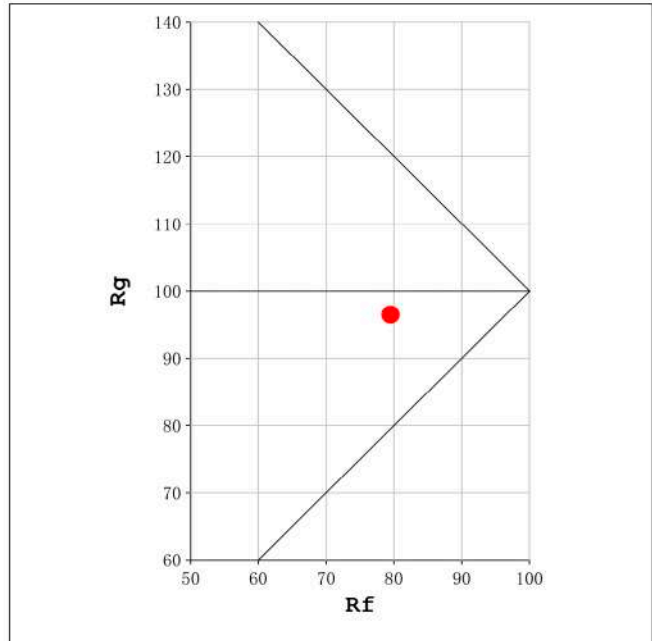
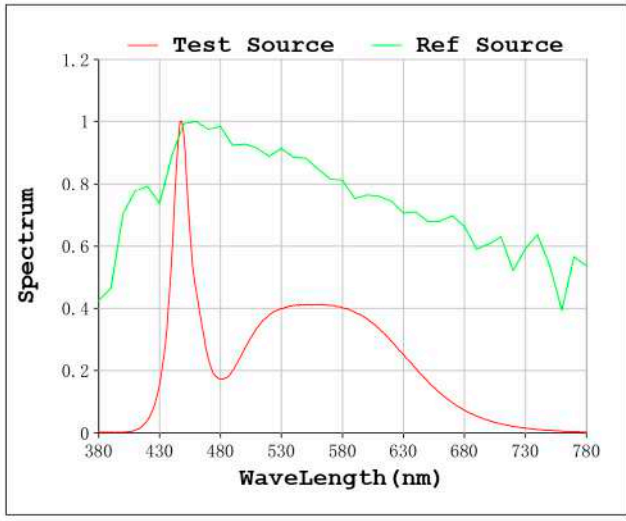
V = 11.998 V I = 0.8769 A P = 10.52 W PF = 1.000

Status: Integral T = 839 ms Ip = 43922 (67%)

Model:Ecoled Getafe 6000K  
 Tester:Sergio Carneros  
 Temperature:21Deg  
 Manufacturer:Luz Negra S.L

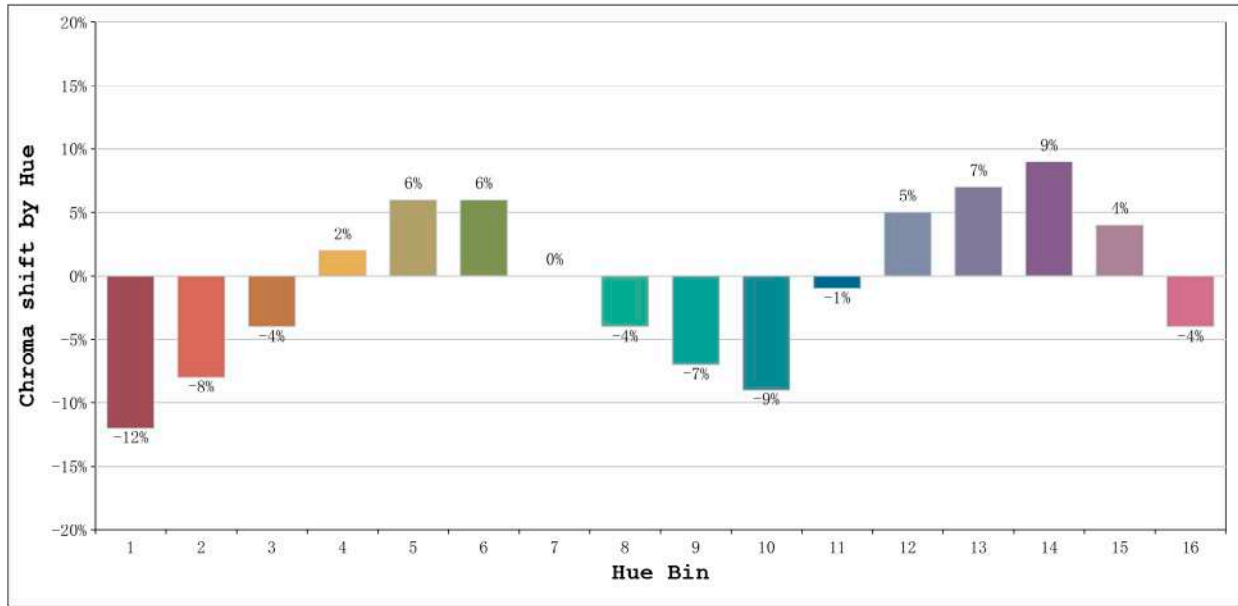
Number: 32.014  
 Date:25-5-2021  
 Humidity:57%  
 Remarks:100cm de tira flexible

Rf: 80      CCT: 6509 K      u': 0.2002  
Rg: 96      Duv: 0.0002      v': 0.4657



Model:Ecoled Getafe 6000K  
Tester:Sergio Carneros  
Temperature:21Deg  
Manufacturer:Luz Negra S.L

Number: 32.014  
Date:25-5-2021  
Humidity:57%  
Remarks:100cm de tira flexible

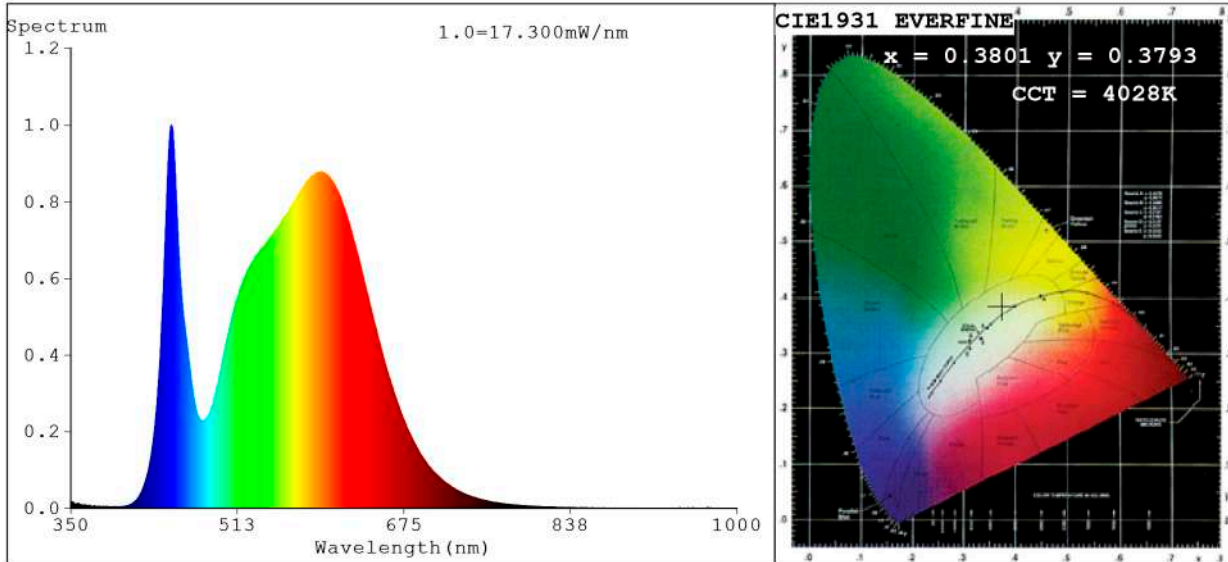


Hue Bin	Hue Angle	Rf	Graphic shift(%)	
			Chroma	Hue
1	0.0° - 22.5°	76	-12	-1
2	22.5° - 45.0°	76	-8	7
3	45.0° - 67.5°	71	-4	15
4	67.5° - 90.0°	75	2	13
5	90.0° - 112.5°	83	6	7
6	112.5° - 135.0°	90	6	0
7	135.0° - 157.5°	89	0	-5
8	157.5° - 180.0°	86	-4	-4
9	180.0° - 202.5°	85	-7	0
10	202.5° - 225.0°	76	-9	11
11	225.0° - 247.5°	68	-1	19
12	247.5° - 270.0°	75	5	13
13	270.0° - 292.5°	87	7	2
14	292.5° - 315.0°	82	9	-6
15	315.0° - 337.5°	78	4	-13
16	337.5° - 360.0°	77	-4	-10

Model:Ecoled Getafe 6000K  
 Tester:Sergio Carneros  
 Temperature:21Deg  
 Manufacturer:Luz Negra S.L

Number: 32.014  
 Date:25-5-2021  
 Humidity:57%  
 Remarks:100cm de tira flexible

**Spectrum Test Report**



**Color Parameters:**

Chromaticity Coordinate:  $x=0.3801$   $y=0.3793$  /  $u'=0.2238$   $v'=0.5026$   
 CCT=4028K (Duv=0.0013) Dominant WL:Ld =578.3nm Purity=27.9%  
 Ratio:R=18.0% G=78.6% B=3.3%; Peak WL:Lp=447.8nm FWHM=21.1nm  
 Render Index:Ra=81.9 CRI=74.9 TM30:Rf=81 Rg=96  
 R1 =80 R2 =87 R3 =93 R4 =82 R5 =80 R6 =82 R7 =86  
 R8 =65 R9 =6 R10=69 R11=81 R12=60 R13=82 R14=96 R15=74

**Photo Parameters:**

Flux = 886.0 lm Eff. : 83.67 lm/W Fe = 2.674 W Scotopic:1473.3 S/P:1.6628

**Electrical parameters:**

V = 11.998 V I = 0.8826 A P = 10.59 W PF = 1.000

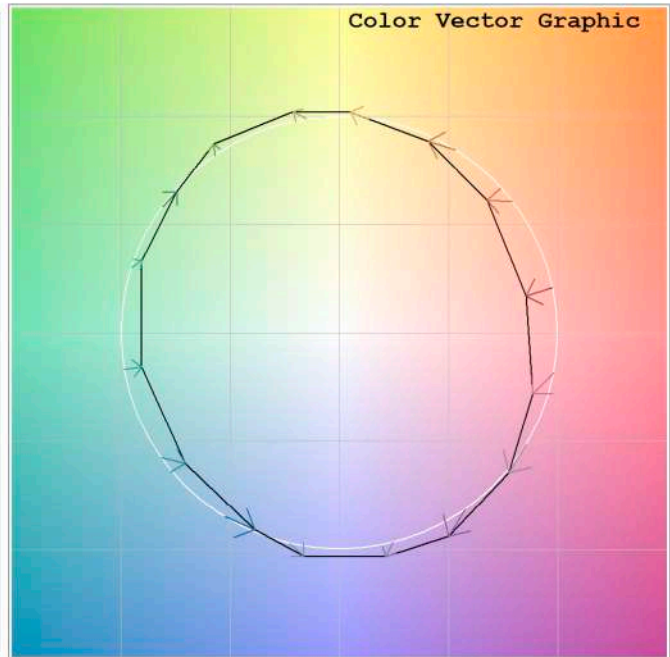
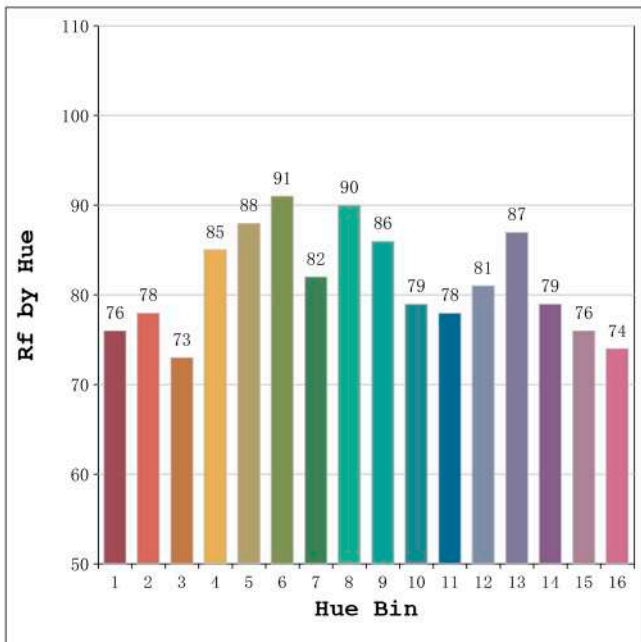
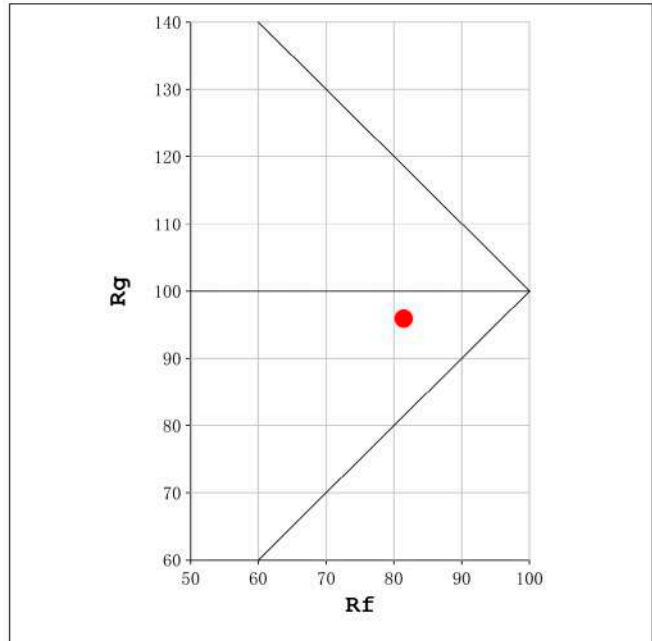
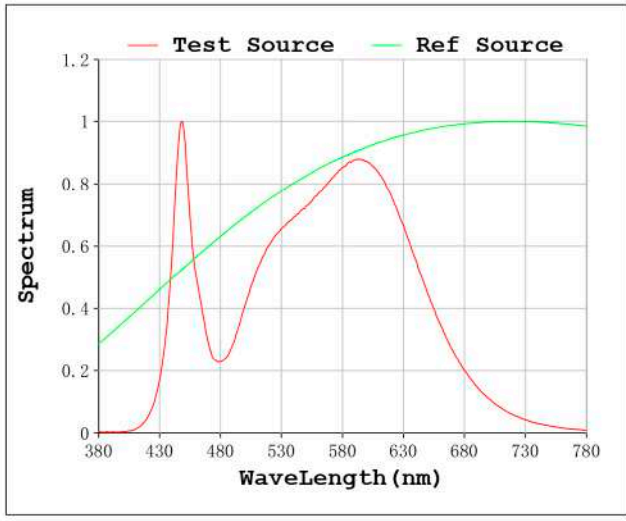
Status: Integral T = 1678 ms Ip = 47885 (73%)

Model:Ecoled Getafe 4000K  
 Tester:Sergio Carneros  
 Temperature:21Deg  
 Manufacturer:Luz Negra S.L

Number: 32.015  
 Date:25-5-2021  
 Humidity:57%  
 Remarks:100cm de tira flexible

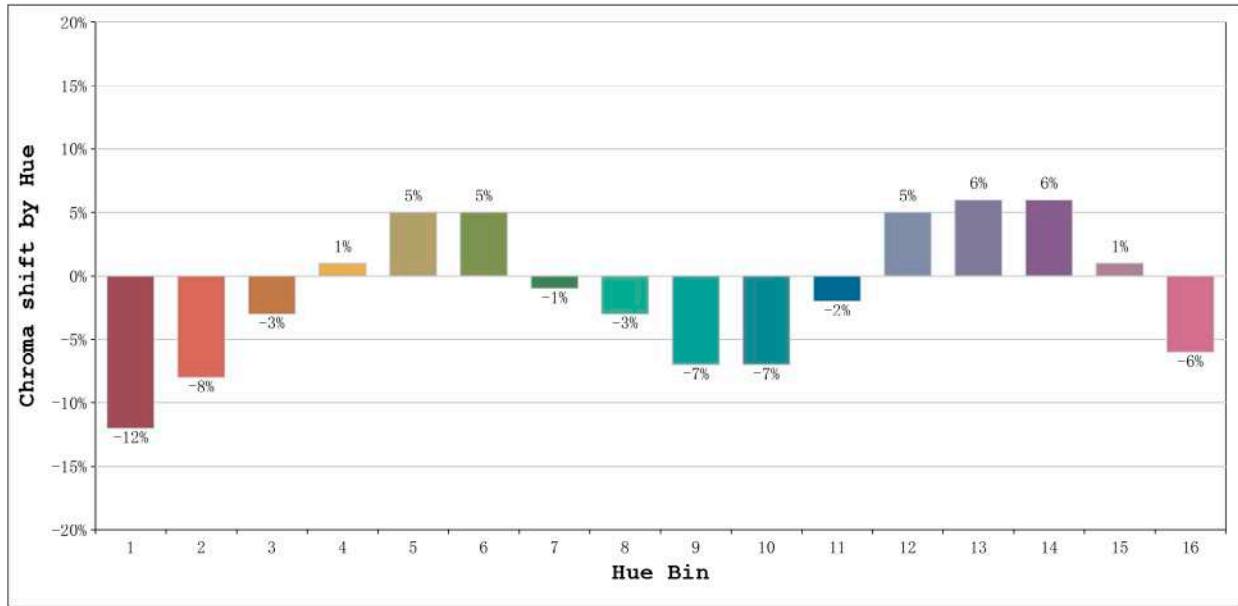


Rf: 81      CCT: 4028 K      u': 0.2238  
Rg: 96      Duv: 0.0013      v': 0.5026



Model:Ecoled Getafe 4000K  
Tester:Sergio Carneros  
Temperature:21Deg  
Manufacturer:Luz Negra S.L

Number: 32.015  
Date:25-5-2021  
Humidity:57%  
Remarks:100cm de tira flexible

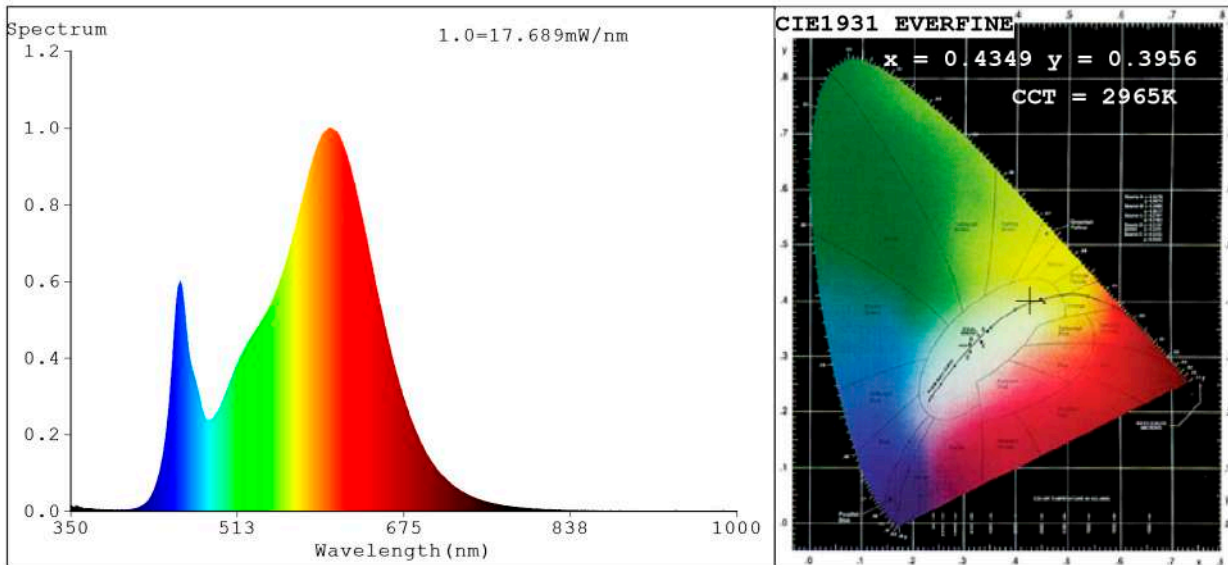


Hue Bin	Hue Angle	Rf	Graphic shift(%)	
			Chroma	Hue
1	0.0° - 22.5°	76	-12	-1
2	22.5° - 45.0°	78	-8	7
3	45.0° - 67.5°	73	-3	12
4	67.5° - 90.0°	85	1	9
5	90.0° - 112.5°	88	5	5
6	112.5° - 135.0°	91	5	-2
7	135.0° - 157.5°	82	-1	-8
8	157.5° - 180.0°	90	-3	-3
9	180.0° - 202.5°	86	-7	0
10	202.5° - 225.0°	79	-7	8
11	225.0° - 247.5°	78	-2	15
12	247.5° - 270.0°	81	5	8
13	270.0° - 292.5°	87	6	-3
14	292.5° - 315.0°	79	6	-12
15	315.0° - 337.5°	76	1	-14
16	337.5° - 360.0°	74	-6	-10

Model:Ecoled Getafe 4000K  
Tester:Sergio Carneros  
Temperature:21Deg  
Manufacturer:Luz Negra S.L

Number: 32.015  
Date:25-5-2021  
Humidity:57%  
Remarks:100cm de tira flexible

**Spectrum Test Report**



**Color Parameters:**

Chromaticity Coordinate:  $x=0.4349$   $y=0.3956$   $u'=0.2529$   $v'=0.5177$   
 CCT=2965K (Duv=-0.0031) Dominant WL:Ld =584.1nm Purity=49.3%  
 Ratio:R=23.4% G=73.6% B=3.0%; Peak WL:Lp=601.8nm FWHM=117.4nm  
 Render Index:Ra=82.4 CRI=77.7 TM30:Rf=81 Rg=95  
 R1 =82 R2 =94 R3 =92 R4 =79 R5 =83 R6 =93 R7 =79  
 R8 =57 R9 =7 R10=87 R11=78 R12=75 R13=86 R14=97 R15=75

**Photo Parameters:**

Flux = 836.7 lm Eff. : 90.05 lm/W Fe = 2.574 W Scotopic:1154.4 S/P:1.3797

**Electrical parameters:**

V = 11.998 V I = 0.7744 A P = 9.291 W PF = 1.000

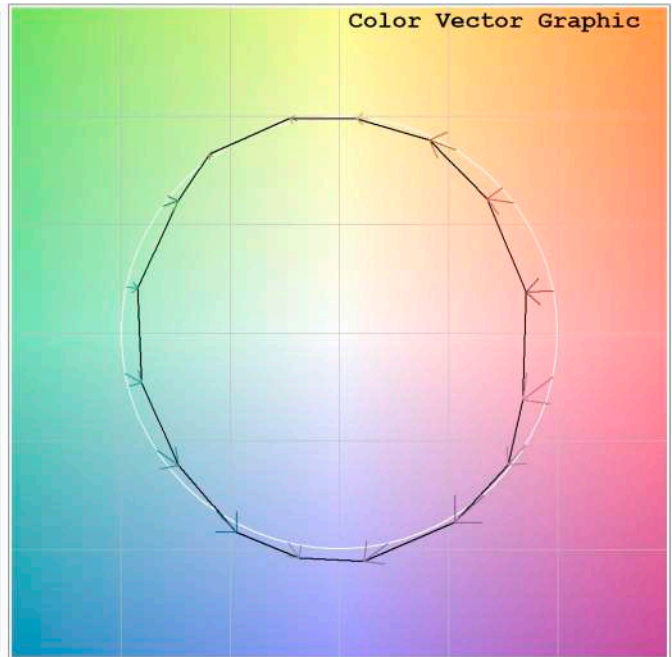
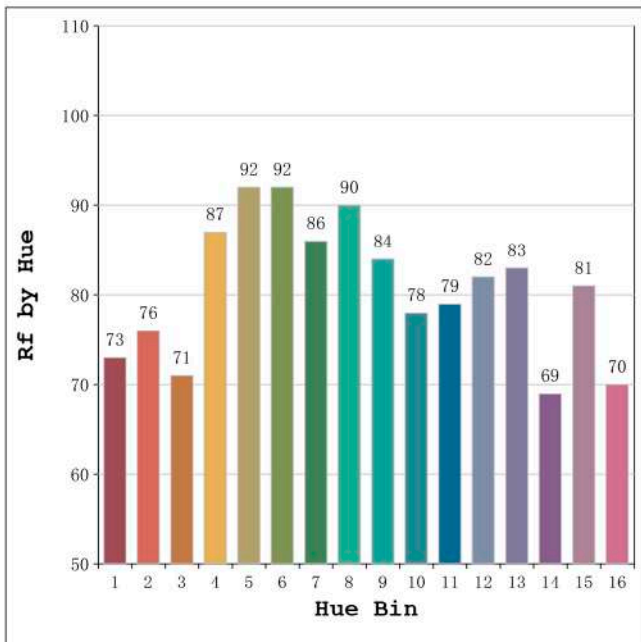
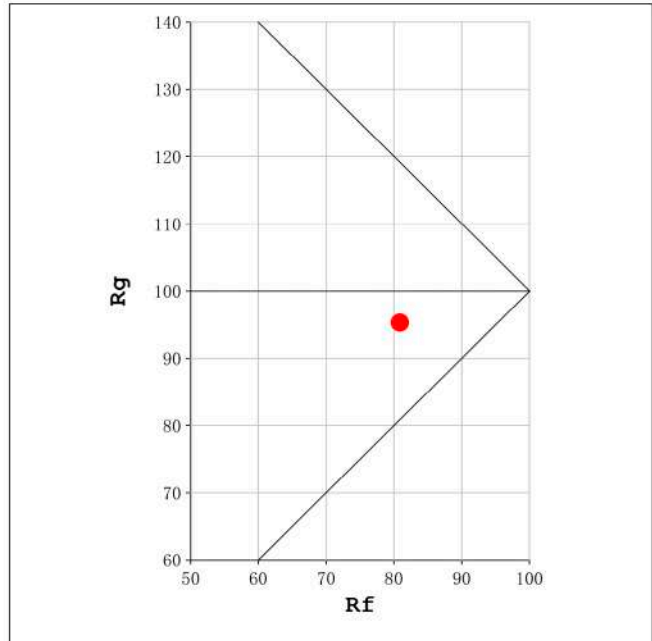
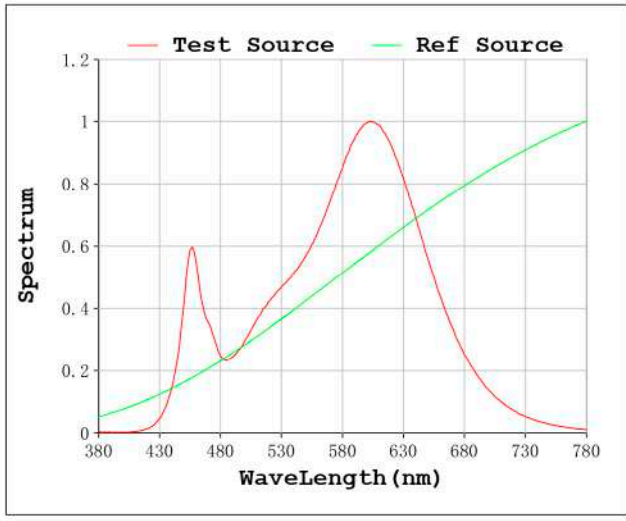
Status: Integral T = 1433 ms Ip = 49340 (75%)

Model:Ecoled Getafe 2800k  
 Tester:Sergio Carneros  
 Temperature:20Deg  
 Manufacturer:Luz Negra S.L

Number: 32.016  
 Date:25-5-2021  
 Humidity:57%  
 Remarks:100cm de tira flexible

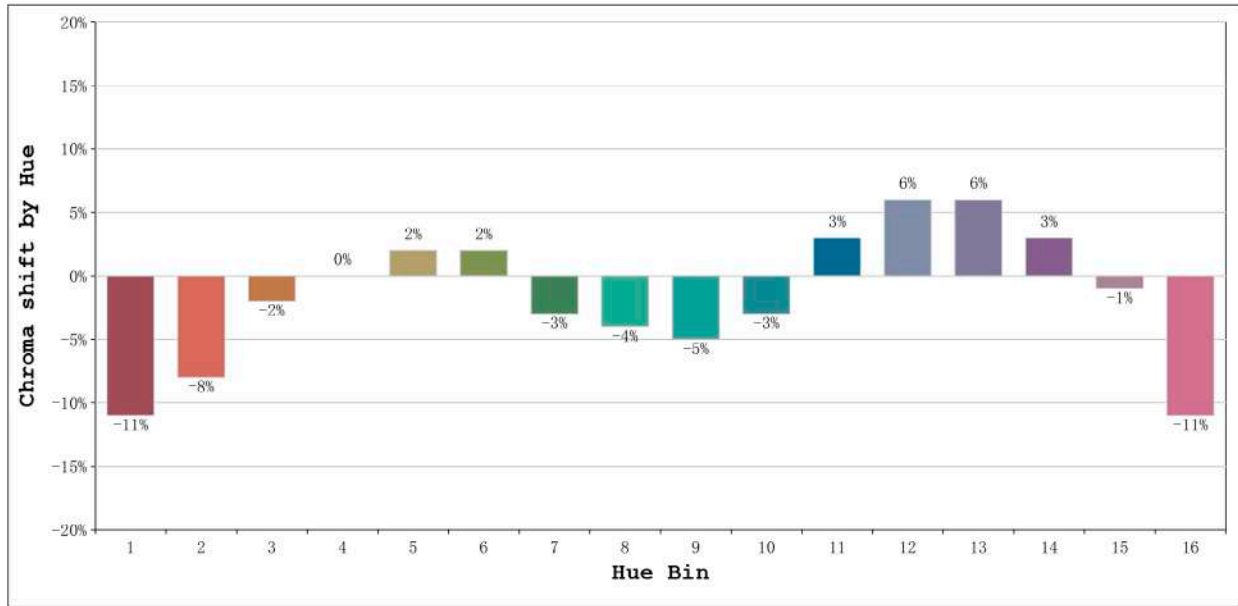


Rf: 81 CCT: 2965 K u': 0.2529  
Rg: 95 Duv: -0.0031 v': 0.5177



Model:Ecoled Getafe 2800k  
Tester:Sergio Carneros  
Temperature:20Deg  
Manufacturer:Luz Negra S.L

Number: 32.016  
Date:25-5-2021  
Humidity:57%  
Remarks:100cm de tira flexible



Hue Bin	Hue Angle	Rf	Graphic shift(%)	
			Chroma	Hue
1	0.0° - 22.5°	73	-11	2
2	22.5° - 45.0°	76	-8	8
3	45.0° - 67.5°	71	-2	13
4	67.5° - 90.0°	87	0	5
5	90.0° - 112.5°	92	2	3
6	112.5° - 135.0°	92	2	-1
7	135.0° - 157.5°	86	-3	-5
8	157.5° - 180.0°	90	-4	0
9	180.0° - 202.5°	84	-5	6
10	202.5° - 225.0°	78	-3	11
11	225.0° - 247.5°	79	3	13
12	247.5° - 270.0°	82	6	6
13	270.0° - 292.5°	83	6	-11
14	292.5° - 315.0°	69	3	-17
15	315.0° - 337.5°	81	-1	-11
16	337.5° - 360.0°	70	-11	-12

Model:Ecoled Getafe 2800k  
Tester:Sergio Carneros  
Temperature:20Deg  
Manufacturer:Luz Negra S.L

Number: 32.016  
Date:25-5-2021  
Humidity:57%  
Remarks:100cm de tira flexible