

MEDIUM BRIGHTNESS

Ref: 33.020	6500°K
Ref: 33.021	4000°K
Ref: 33.022	3000°K
Ref: 33.023	2800°K

Single-coloured flexible strip **"PRO WATERPROOF DUO"**
IP67 with 144 leds/metre 3528SMD.

Requires use with led profile to permit dissipation.

10mm PCB

Current stabiliser.

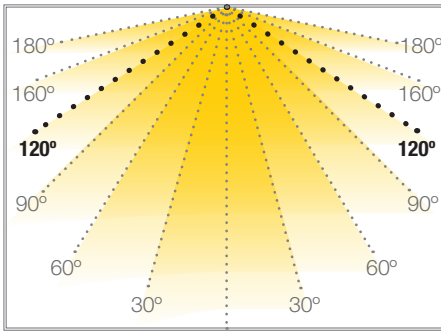
Daily recommended use: 18h

Maximum connection in open circuit: 10m

Maximum connection in closed circuit: 20m

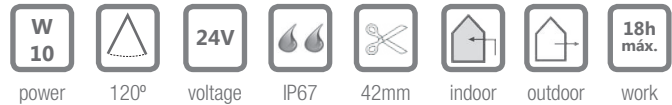
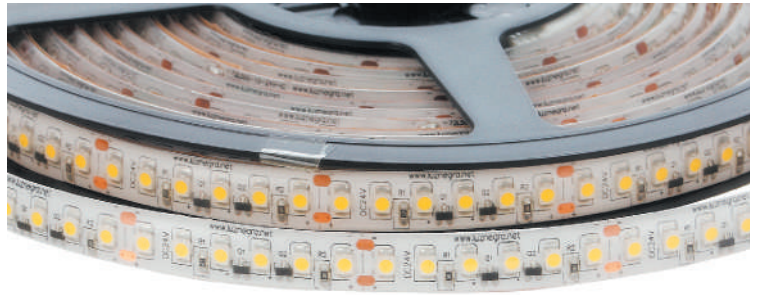
Estimated lifespan: 50000h *

* Depending on the dissipation of the profile, the daily working hours and the external environmental working temperature



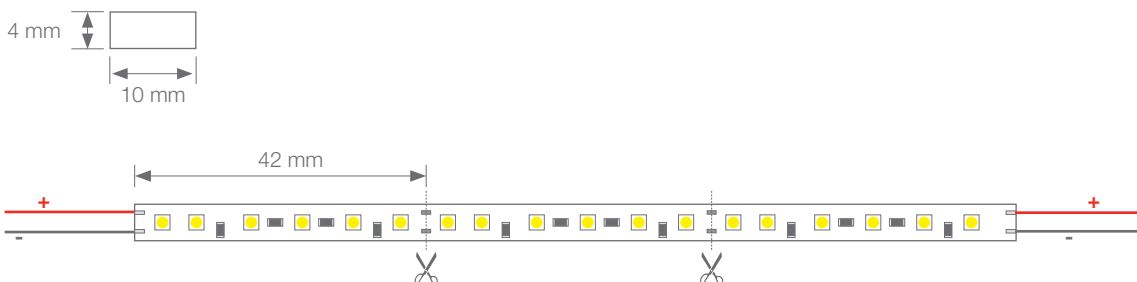
VIZCAYA

FLEXIBLE STRIP

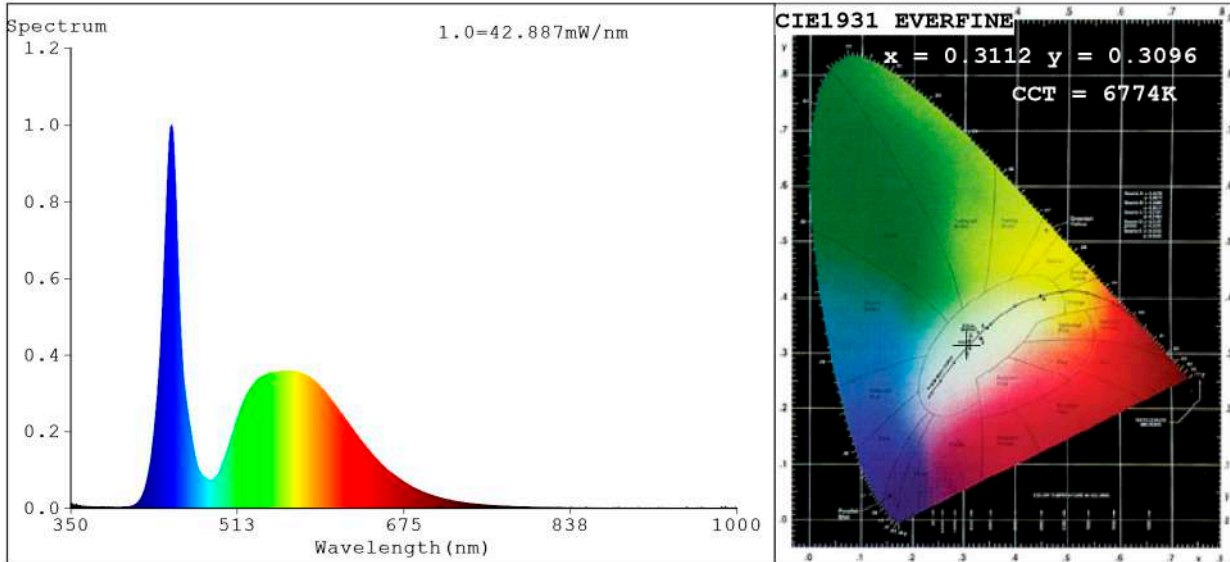


Power (W)	10W/m
Voltage (V)	24V
Led type	SMD3528
Lumens (6500°K)	1100 Lm/m
Lumens (4000°K)	980 Lm/m
Lumens (3000°K)	960 Lm/m
Lumens (2800°K)	910 Lm/m
CRI	>55
Light emission	120°
Waterproofing	IP67 "DUO"
N° leds/m	144
Measurements	5000x10x4mm
Cutttable	every 42mm
PCB	10mm
Working temperature	-20°C / +40°C
Apt for	indoor/outdoor
Packaging	1 roll/5m
Guarantee	3 years

Aprobado por: 



Spectrum Test Report



Color Parameters:

Chromaticity Coordinate: $x=0.3112$ $y=0.3096$ $u'=0.2043$ $v'=0.4573$
 CCT=6774K (Duv=-0.0063) Dominant WL:Ld =475.6nm Purity=9.8%
 Ratio:R=13.1% G=82.9% B=4.0%; Peak WL:Lp=448.5nm FWHM=17.5nm
 Render Index:Ra=75.0 CRI=65.9 TM30:Rf=69 Rg=96
 R1 =77 R2 =77 R3 =74 R4 =78 R5 =77 R6 =67 R7 =81
 R8 =69 R9 =0 R10=42 R11=77 R12=42 R13=76 R14=85 R15=76

Photo Parameters:

Flux = 930.1 lm Eff. : 94.37 lm/W Fe = 3.046 W Scotopic:1904.5 S/P:2.0476

Electrical parameters:

V = 23.998 V I = 0.4107 A P = 9.856 W PF = 1.000

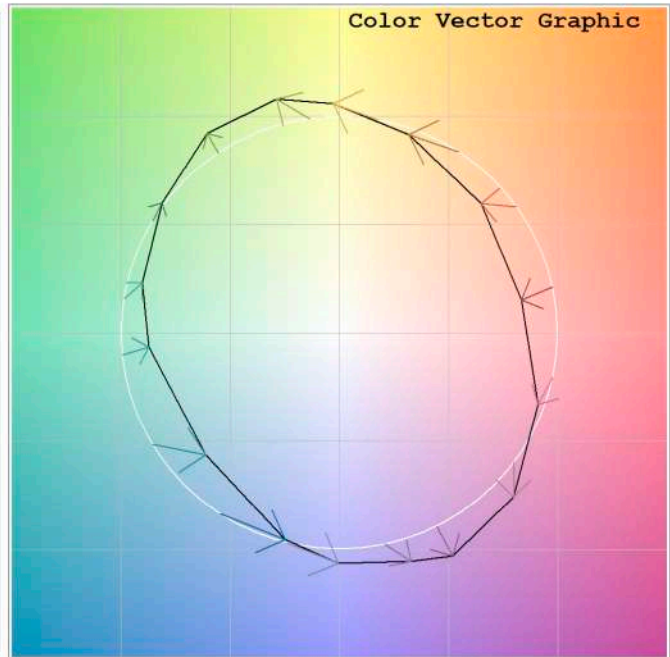
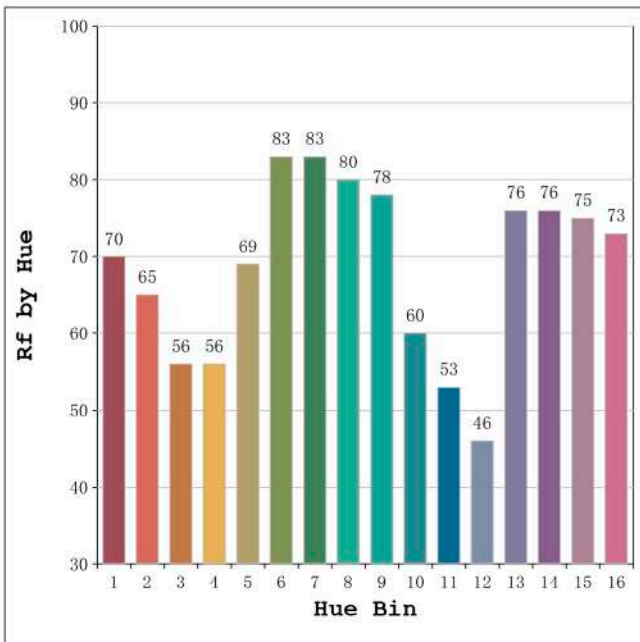
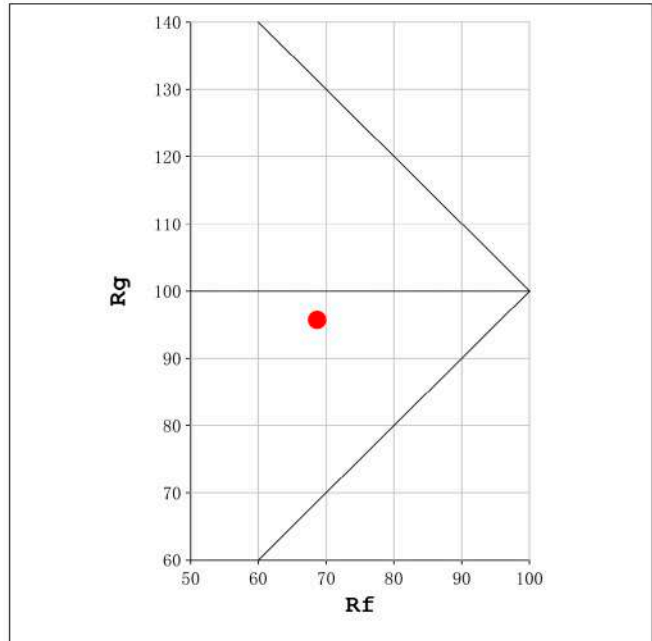
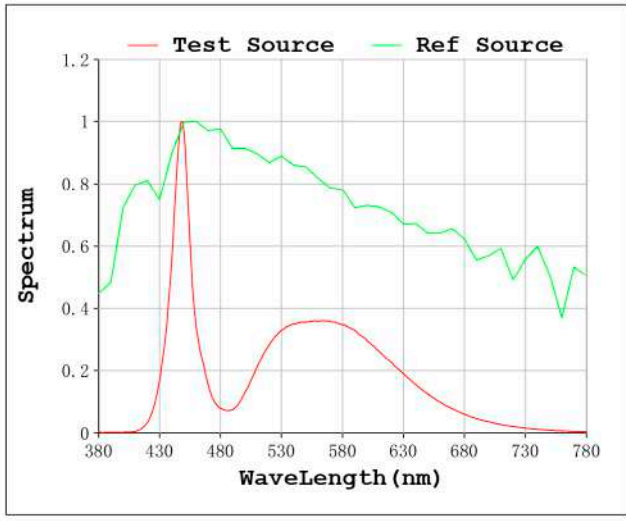
WHITE:OUT

Status: Integral T = 528 ms Ip = 34121 (52%)

Model:Ecoled Vizcaya 6500
 Tester:Sergio Carneros
 Temperature:25Deg
 Manufacturer:Luz Negra S.L

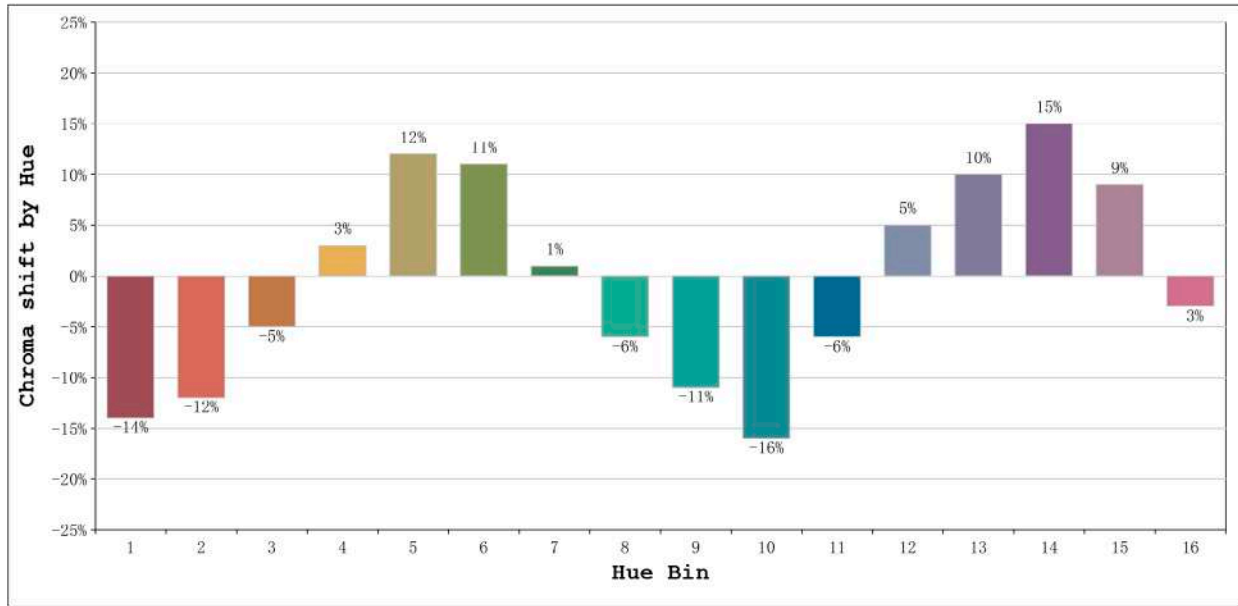
Number: 33.020
 Date:25-5-2021
 Humidity:57%
 Remarks:100cm de tira flexible

Rf: 69 CCT: 6774 K u': 0.2043
Rg: 96 Duv: -0.0063 v': 0.4573



Model:Ecoled Vizcaya 6500
Tester:Sergio Carneros
Temperature:25Deg
Manufacturer:Luz Negra S.L

Number: 33.020
Date:25-5-2021
Humidity:57%
Remarks:100cm de tira flexible

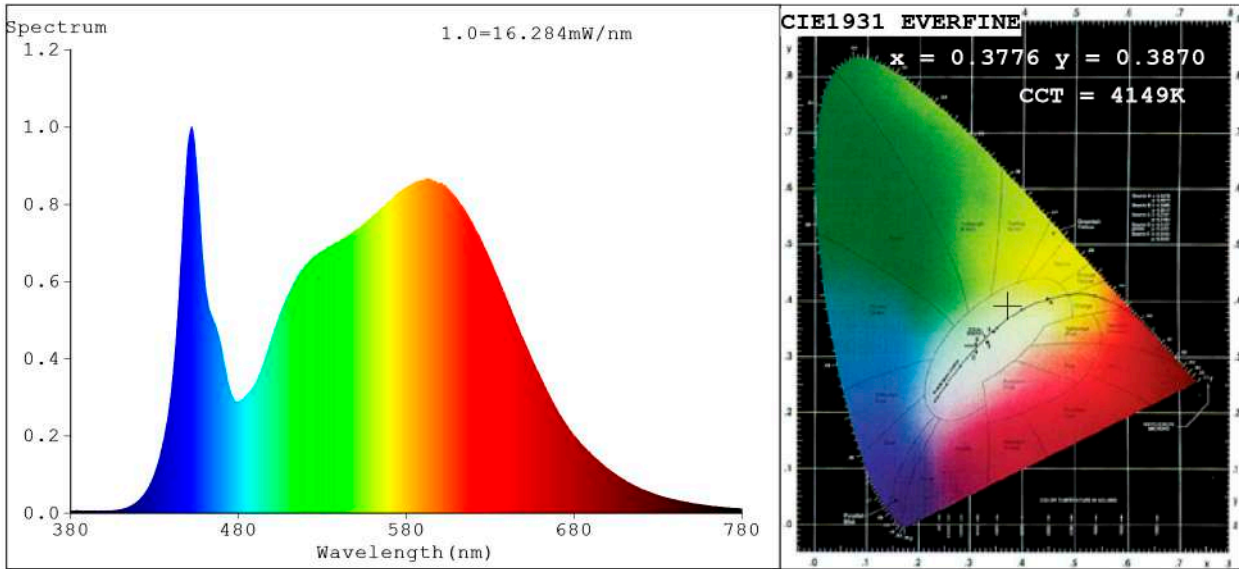


Hue Bin	Hue Angle	Rf	Graphic shift(%)	
			Chroma	Hue
1	0.0° - 22.5°	70	-14	-2
2	22.5° - 45.0°	65	-12	10
3	45.0° - 67.5°	56	-5	23
4	67.5° - 90.0°	56	3	22
5	90.0° - 112.5°	69	12	13
6	112.5° - 135.0°	83	11	0
7	135.0° - 157.5°	83	1	-8
8	157.5° - 180.0°	80	-6	-8
9	180.0° - 202.5°	78	-11	0
10	202.5° - 225.0°	60	-16	18
11	225.0° - 247.5°	53	-6	31
12	247.5° - 270.0°	46	5	25
13	270.0° - 292.5°	76	10	11
14	292.5° - 315.0°	76	15	-1
15	315.0° - 337.5°	75	9	-13
16	337.5° - 360.0°	73	-3	-12

Model:Ecoled Vizcaya 6500
Tester:Sergio Carneros
Temperature:25Deg
Manufacturer:Luz Negra S.L

Number: 33.020
Date:25-5-2021
Humidity:57%
Remarks:100cm de tira flexible

Spectrum Test Report



Color Parameters:

Chromaticity Coordinate: $x=0.3776$ $y=0.3870$ / $u'=0.2192$ $v'=0.5056$
 CCT=4149K (Duv=0.0056) Dominant WL: $\lambda_d = 575.7\text{nm}$ Purity=29.5%
 Ratio: R=17.5% G=78.7% B=3.7% ; Peak WL: $\lambda_p = 452.2\text{nm}$ FWHM=21.3nm
 Render Index: Ra=83.2 CRI=76.2 TM30: Rf=83 Rg=93
 R1 =81 R2 =89 R3 =96 R4 =82 R5 =81 R6 =85 R7 =88
 R8 =65 R9 =8 R10=74 R11=81 R12=58 R13=83 R14=98 R15=74

Photo Parameters:

Flux = 844.0 lm Eff. : 87.42 lm/W Fe = 2.526 W Scotopic:1465 S/P:1.7359

Electrical parameters:

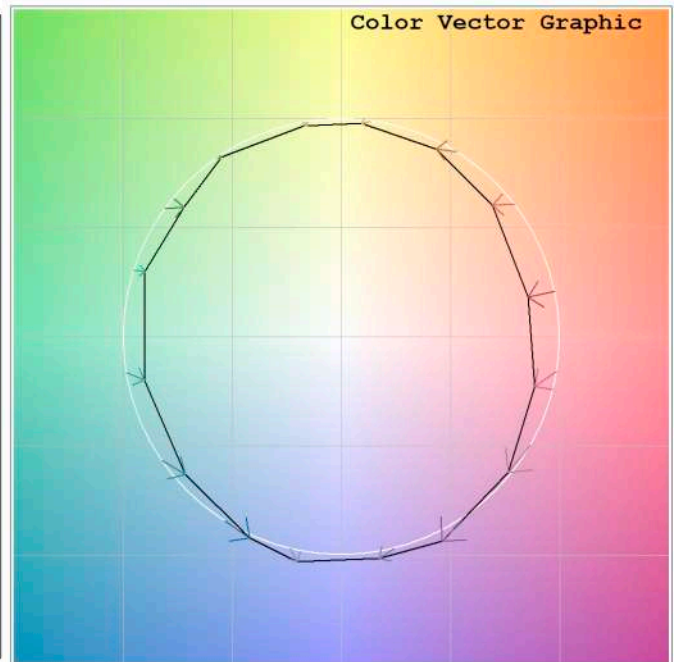
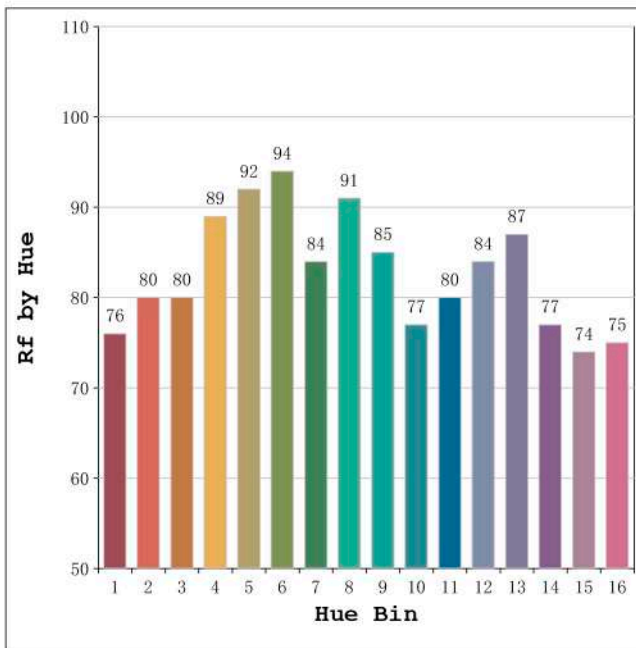
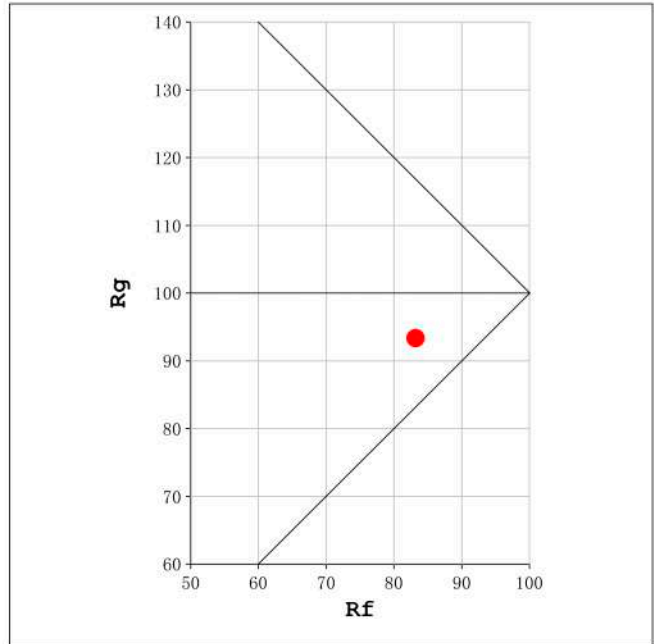
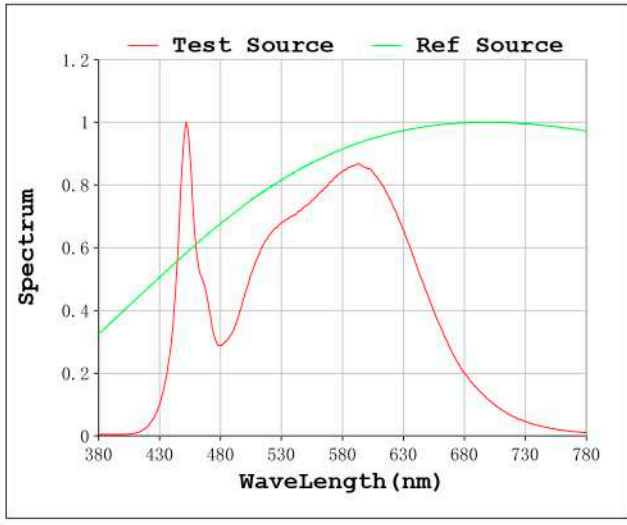
V = 23.998 V I = 0.4023 A P = 9.654 W PF = 1.000

Status: Integral T = 1715 ms Ip = 51614 (79%)

Model: Ecoled Vizcaya 4000K
 Tester: Sergio Carneros
 Temperature: 27Deg
 Manufacturer: Luz Negra S.L.

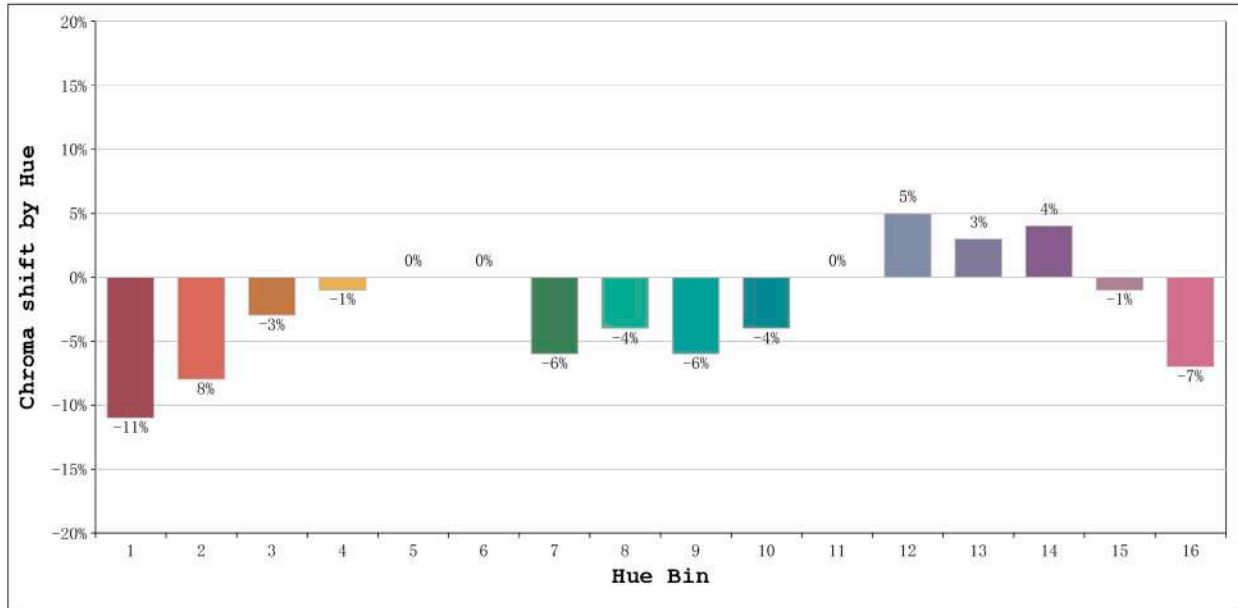
Number: 33.021
 Date: 2021-06-10 12:33:18
 Humidity: 35%
 Remarks: 100cm de tira flexible

Rf: 83 CCT: 4149 K u': 0.2192
Rg: 93 Duv: 0.0056 v': 0.5056



Model:Ecoled Vizcaya 4000K
Tester:Sergio Carneros
Temperature:27Deg
Manufacturer:Luz Negra S.L.

Number: 33.021
Date:2021-06-10 12:33:18
Humidity:35%
Remarks:100cm de tira flexible

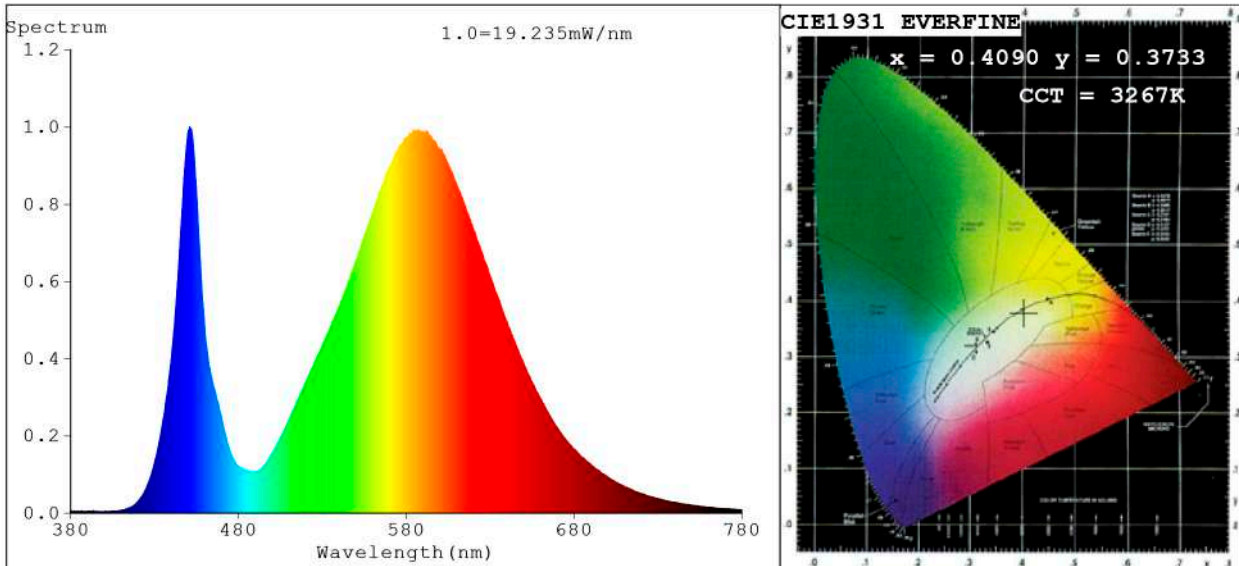


Hue Bin	Hue Angle	Rf	Graphic shift(%)	
			Chroma	Hue
1	0.0° - 22.5°	76	-11	0
2	22.5° - 45.0°	80	-8	5
3	45.0° - 67.5°	80	-3	9
4	67.5° - 90.0°	89	-1	4
5	90.0° - 112.5°	92	0	2
6	112.5° - 135.0°	94	0	-1
7	135.0° - 157.5°	84	-6	-4
8	157.5° - 180.0°	91	-4	0
9	180.0° - 202.5°	85	-6	5
10	202.5° - 225.0°	77	-4	11
11	225.0° - 247.5°	80	0	14
12	247.5° - 270.0°	84	5	4
13	270.0° - 292.5°	87	3	-7
14	292.5° - 315.0°	77	4	-14
15	315.0° - 337.5°	74	-1	-15
16	337.5° - 360.0°	75	-7	-8

Model:Ecoled Vizcaya 4000K
 Tester:Sergio Carneros
 Temperature:27Deg
 Manufacturer:Luz Negra S.L.

Number: 33.021
 Date:2021-06-10 12:33:18
 Humidity:35%
 Remarks:100cm de tira flexible

Spectrum Test Report



Color Parameters:

Chromaticity Coordinate: x=0.4090 y=0.3733/u'=0.2456 v'=0.5043
 CCT=3267K (Duv=-0.0086) Dominant WL:Ld =586.0nm Purity=34.8%
 Ratio:R=19.4% G=78.3% B=2.3%; Peak WL:Lp=450.9nm FWHM=17.5nm
 Render Index:Ra=67.5 CRI=60.7 TM30:Rf=64 Rg=93
 R1 =64 R2 =81 R3 =91 R4 =59 R5 =63 R6 =71 R7 =73
 R8 =38 R9 =0 R10=54 R11=49 R12=43 R13=67 R14=95 R15=59

Photo Parameters:

Flux = 909.2 lm Eff. : 94.81 lm/W Fe = 2.625 W Scotopic:1185.6 S/P:1.304

Electrical parameters:

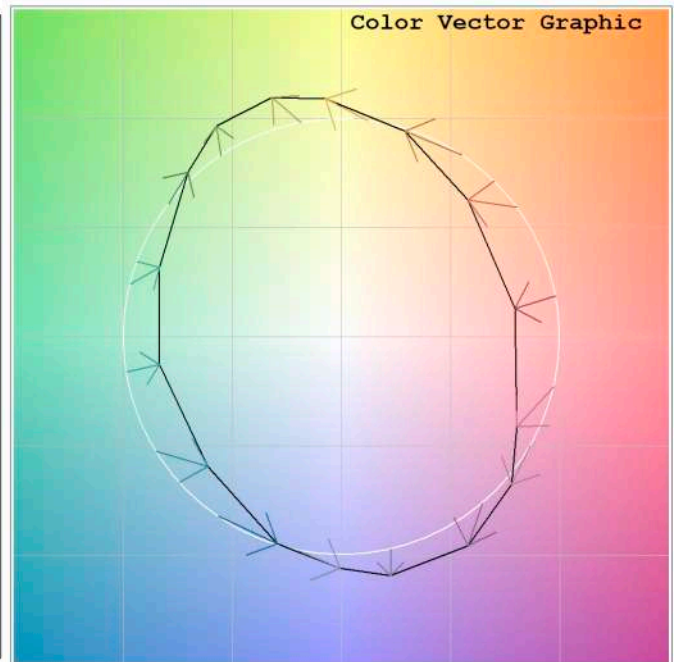
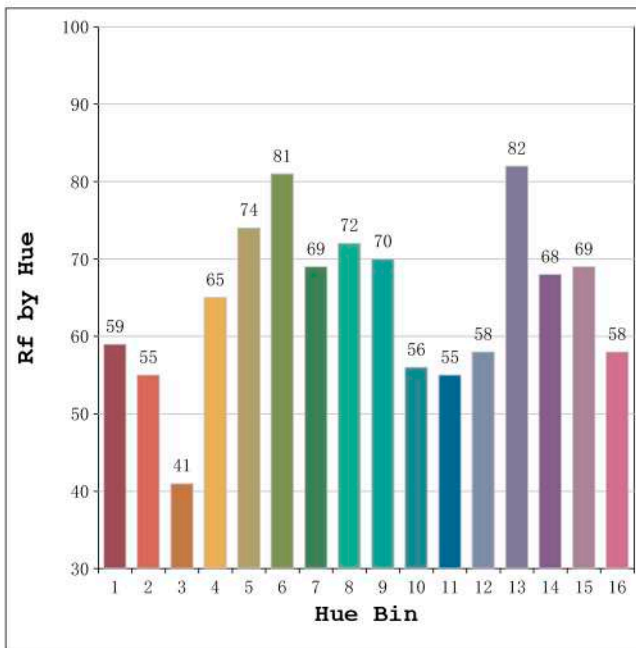
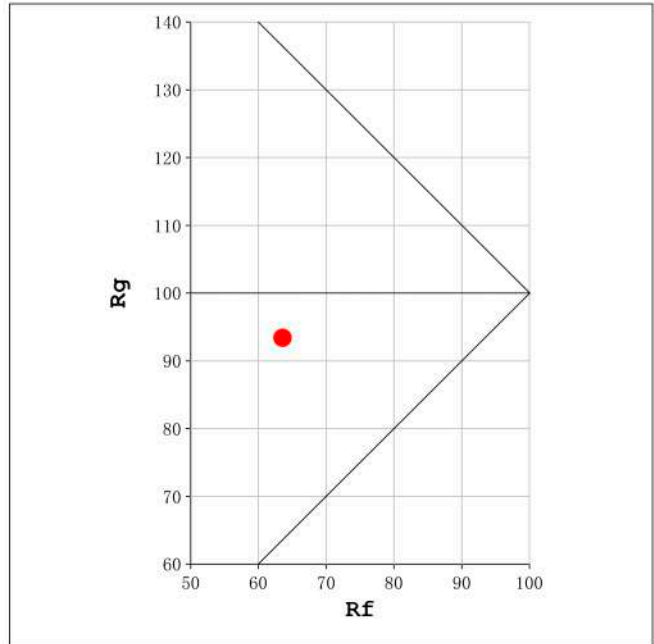
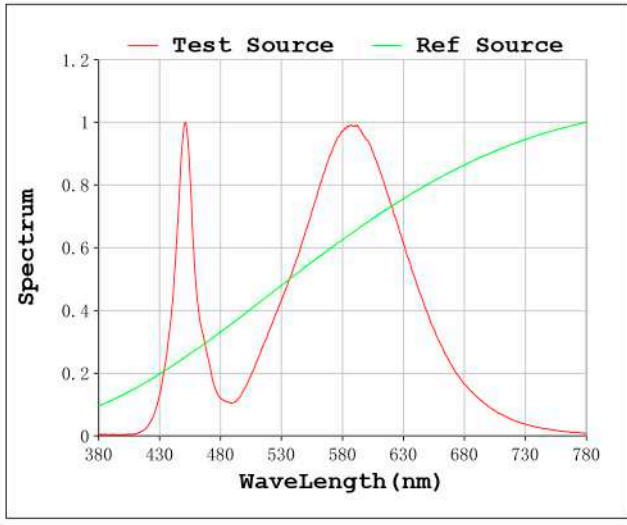
V = 23.998 V I = 0.3996 A P = 9.590 W PF = 1.000

Status: Integral T = 857 ms Ip = 35285 (54%)

Model:Ecoled Vizcaya 3200K
 Tester:Sergio Carneros
 Temperature:27Deg
 Manufacturer:Luz Negra S.L.

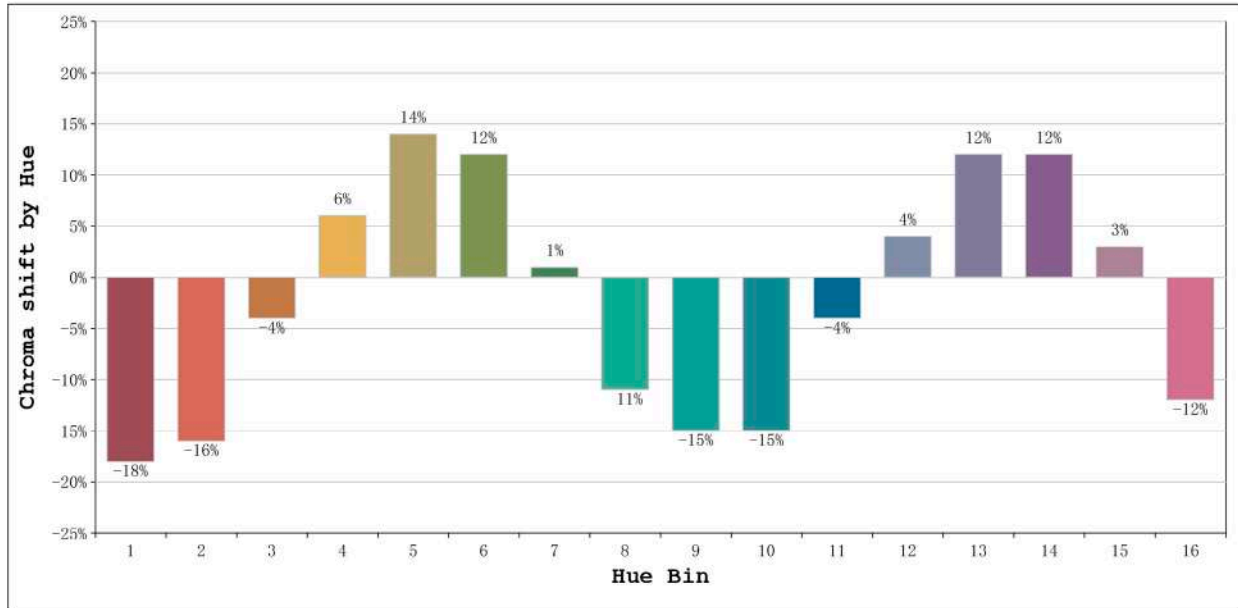
Number: 33.022
 Date:2021-06-10 12:36:35
 Humidity:35%
 Remarks:100cm de tira flexible

Rf: 64 CCT: 3267 K u': 0.2456
Rg: 93 Duv: -0.0086 v': 0.5043



Model:Ecoled Vizcaya 3200K
Tester:Sergio Carneros
Temperature:27Deg
Manufacturer:Luz Negra S.L.

Number: 33.022
Date:2021-06-10 12:36:35
Humidity:35%
Remarks:100cm de tira flexible

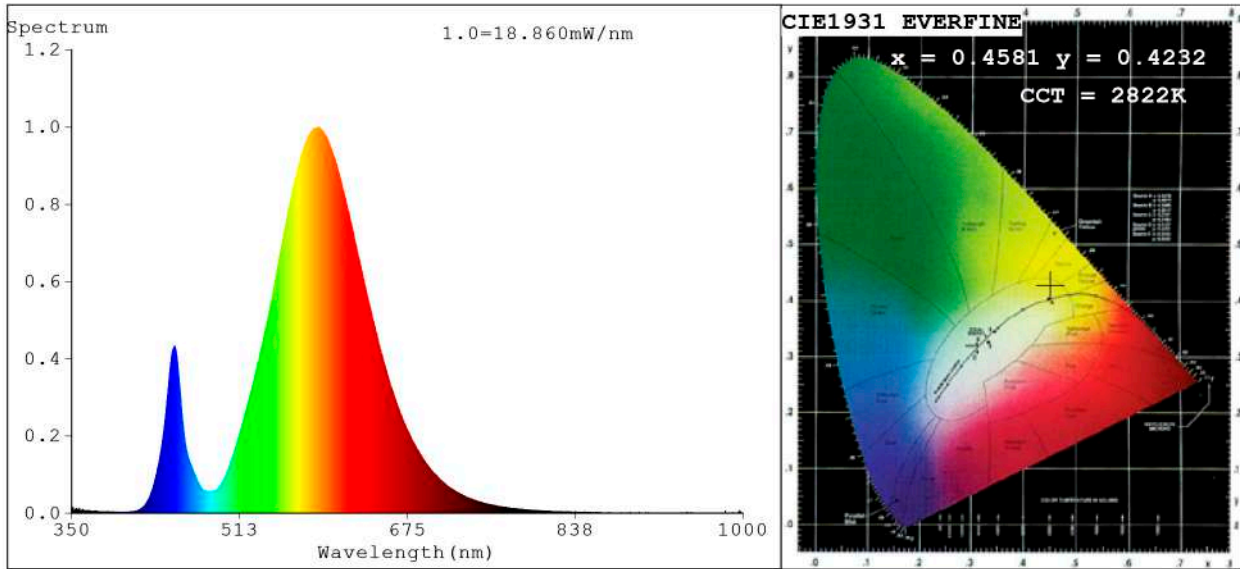


Hue Bin	Hue Angle	Rf	Graphic shift(%)	
			Chroma	Hue
1	0.0° - 22.5°	59	-18	-1
2	22.5° - 45.0°	55	-16	15
3	45.0° - 67.5°	41	-4	28
4	67.5° - 90.0°	65	6	21
5	90.0° - 112.5°	74	14	11
6	112.5° - 135.0°	81	12	-5
7	135.0° - 157.5°	69	1	-16
8	157.5° - 180.0°	72	-11	-9
9	180.0° - 202.5°	70	-15	0
10	202.5° - 225.0°	56	-15	19
11	225.0° - 247.5°	55	-4	30
12	247.5° - 270.0°	58	4	21
13	270.0° - 292.5°	82	12	-2
14	292.5° - 315.0°	68	12	-15
15	315.0° - 337.5°	69	3	-18
16	337.5° - 360.0°	58	-12	-20

Model:Ecoled Vizcaya 3200K
 Tester:Sergio Carneros
 Temperature:27Deg
 Manufacturer:Luz Negra S.L.

Number: 33.022
 Date:2021-06-10 12:36:35
 Humidity:35%
 Remarks:100cm de tira flexible

Spectrum Test Report



Color Parameters:

Chromaticity Coordinate: $x=0.4581$ $y=0.4232$ $u'=0.2558$ $v'=0.5318$
 CCT=2822K (Duv=0.0048) Dominant WL:Ld =582.2nm Purity=64.6%
 Ratio:R=20.5% G=78.4% B=1.1%; Peak WL:Lp=589.9nm FWHM=101.9nm
 Render Index:Ra=61.0 CRI=53.1 TM30:Rf=63 Rg=89
 R1 =55 R2 =74 R3 =91 R4 =53 R5 =52 R6 =60 R7 =74
 R8 =30 R9 =0 R10=40 R11=40 R12=24 R13=57 R14=95 R15=48

Photo Parameters:

Flux = 865.6 lm Eff. : 91.76 lm/W Fe = 2.330 W Scotopic:867 S/P:1.0016

Electrical parameters:

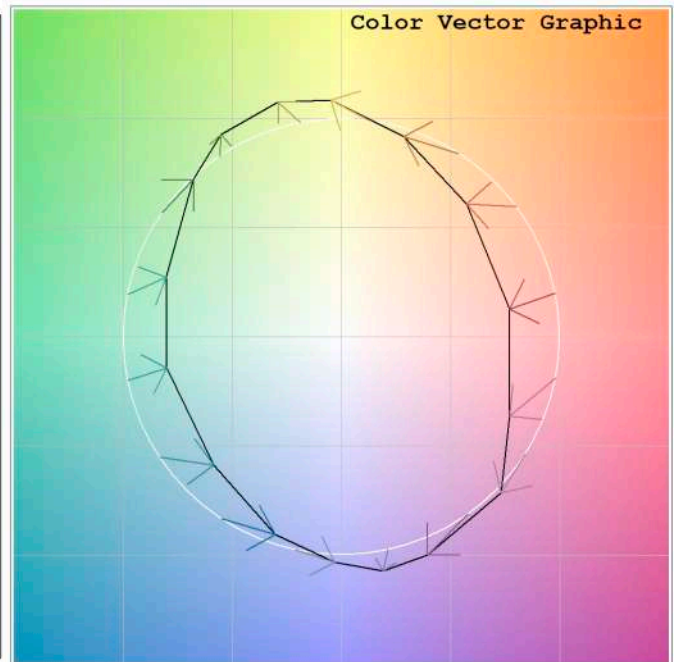
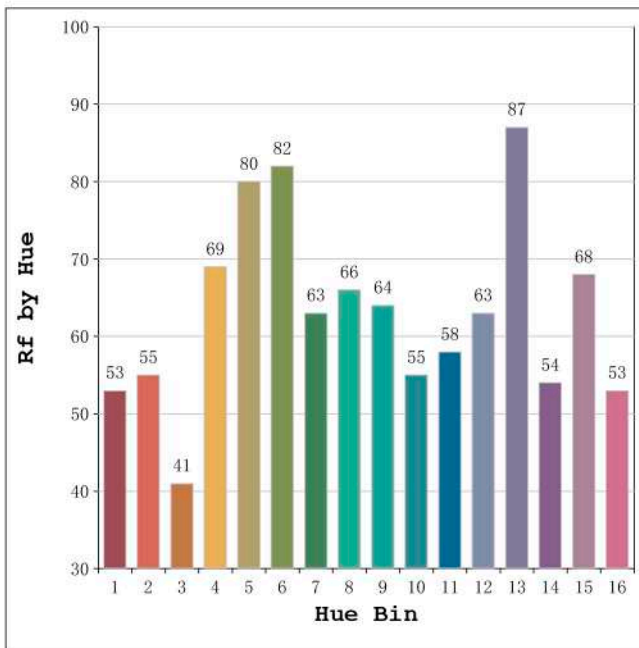
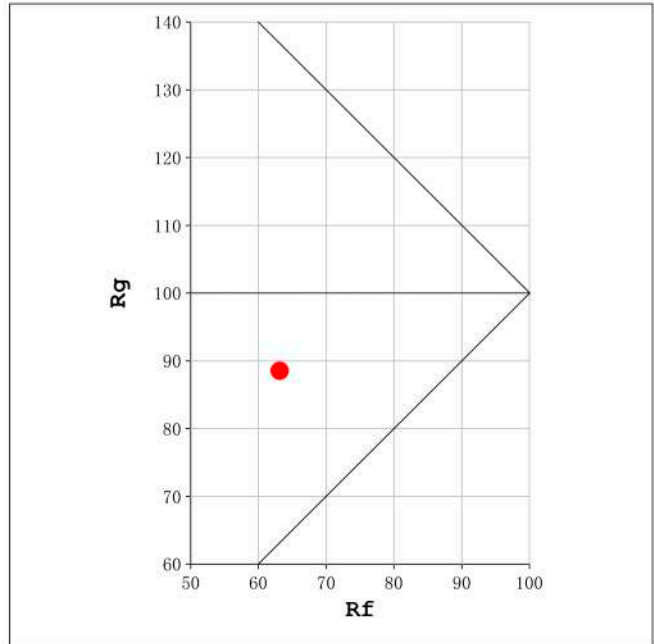
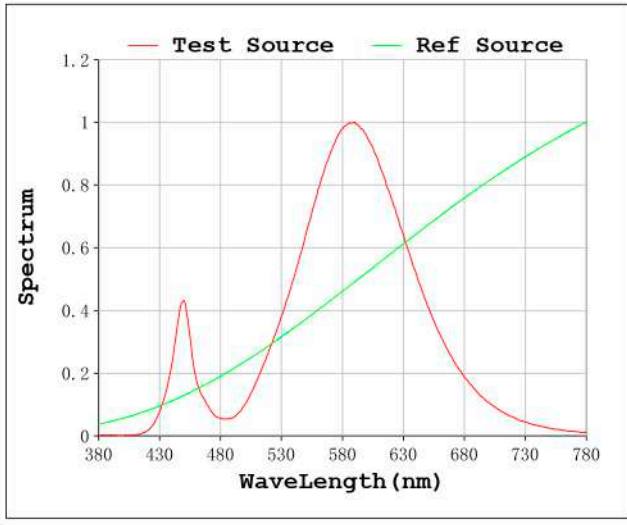
V = 23.998 V I = 0.3931 A P = 9.434 W PF = 1.000

Status: Integral T = 763 ms Ip = 33025 (50%)

Model:Ecoled Vizcaya 2800K
 Tester:Sergio Carneros
 Temperature:21Deg
 Manufacturer:Luz Negra S.L

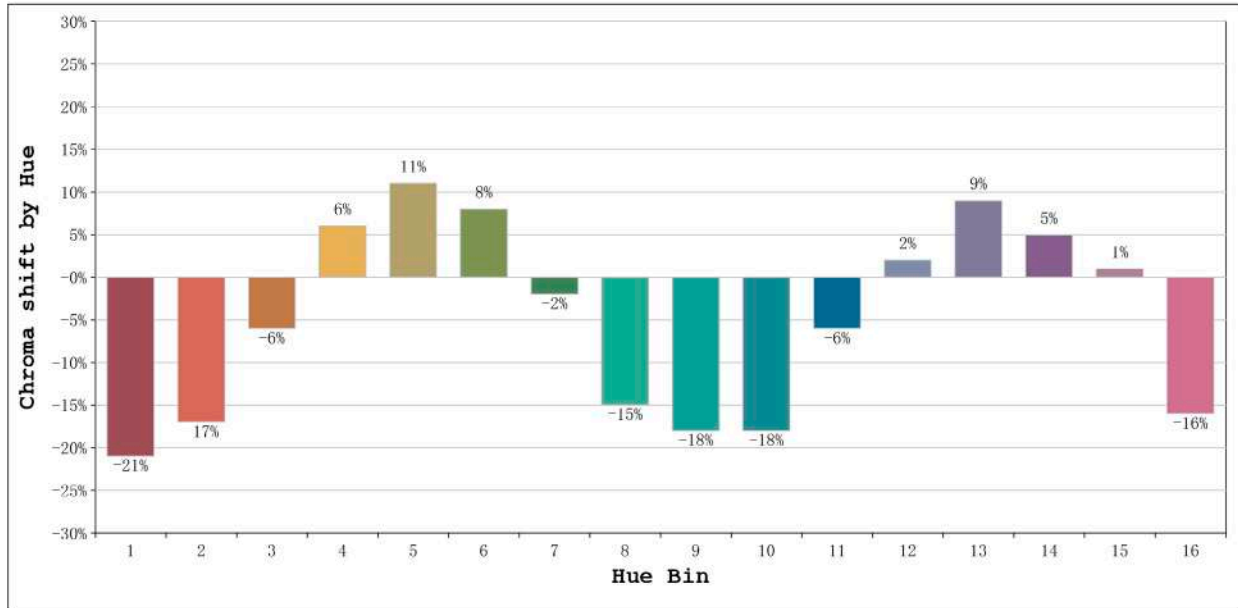
Number: 33.023
 Date:25-5-2021
 Humidity:57%
 Remarks:100cm de tira flexible

Rf: 63 CCT: 2822 K u': 0.2558
Rg: 89 Duv: 0.0048 v': 0.5318



Model:Ecoled Vizcaya 2800K
Tester:Sergio Carneros
Temperature:21Deg
Manufacturer:Luz Negra S.L

Number: 33.023
Date:25-5-2021
Humidity:57%
Remarks:100cm de tira flexible



Hue Bin	Hue Angle	Rf	Graphic shift(%)	
			Chroma	Hue
1	0.0° - 22.5°	53	-21	-2
2	22.5° - 45.0°	55	-17	14
3	45.0° - 67.5°	41	-6	25
4	67.5° - 90.0°	69	6	19
5	90.0° - 112.5°	80	11	8
6	112.5° - 135.0°	82	8	-5
7	135.0° - 157.5°	63	-2	-19
8	157.5° - 180.0°	66	-15	-10
9	180.0° - 202.5°	64	-18	-1
10	202.5° - 225.0°	55	-18	17
11	225.0° - 247.5°	58	-6	24
12	247.5° - 270.0°	63	2	19
13	270.0° - 292.5°	87	9	-3
14	292.5° - 315.0°	54	5	-25
15	315.0° - 337.5°	68	1	-20
16	337.5° - 360.0°	53	-16	-20

Model:Ecoled Vizcaya 2800K
 Tester:Sergio Carneros
 Temperature:21Deg
 Manufacturer:Luz Negra S.L

Number: 33.023
 Date:25-5-2021
 Humidity:57%
 Remarks:100cm de tira flexible