

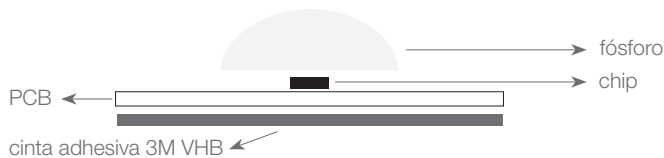
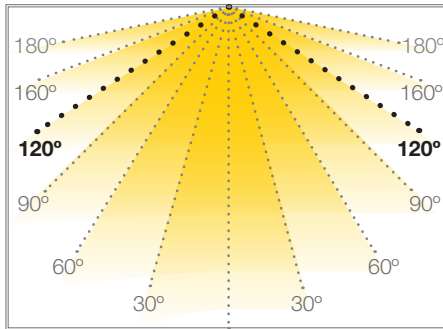
## TIRA FLEXIBLE COB 5MM

Ref.: 31.140      2700°K  
 Ref.: 31.141      4000°K  
 Ref.: 31.142      6000°K

Las nuevas tiras flexibles con tecnología COB permiten iluminar de forma lineal sin que se aprecien los puntos led. A diferencia de las tiras convencionales, en las tiras COB se fija el chip directamente en el PCB sin precisar del dado SMD (frame). Al fijarse directamente a la base de la cinta ofrece una mayor disipación térmica.

Máxima conexión en circuito abierto: 5m  
 Máxima conexión en circuito cerrado: 10m  
 Uso diario máximo recomendado: 20h  
 Vida útil: 50.000h\*

\*En función de la disipación del perfil, de las horas diarias trabajadas y de la temperatura externa ambiental de trabajo.



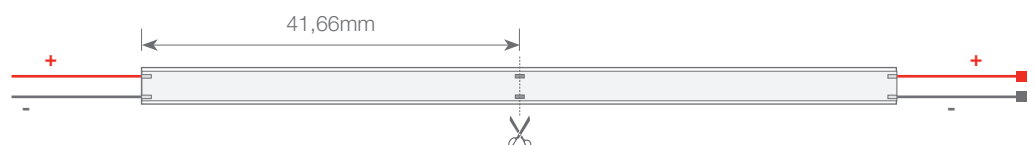
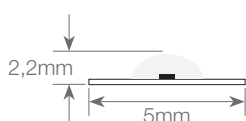
## COB IP20

## TIRAS FLEXIBLES



Potencia (W)	10W/m
Voltaje (V)	24V
Tipo Led	COB
Lumens 2700°K	1000 Lm/m
Lumens 4000°K	1050 Lm/m
Lumens 6000°K	1100 Lm/m
CRI	>90
Emisión de luz	120°
Estanqueidad (IP)	IP20
Nº leds/m	384
Medidas	5000x5x2,2mm
Cortable	cada 41,66mm
PCB	5mm
Temperatura trabajo	-25°C / +45°C
Apto para	interior
Embalaje	rollo de 5m
Garantía	2 años

Aprobado por: 

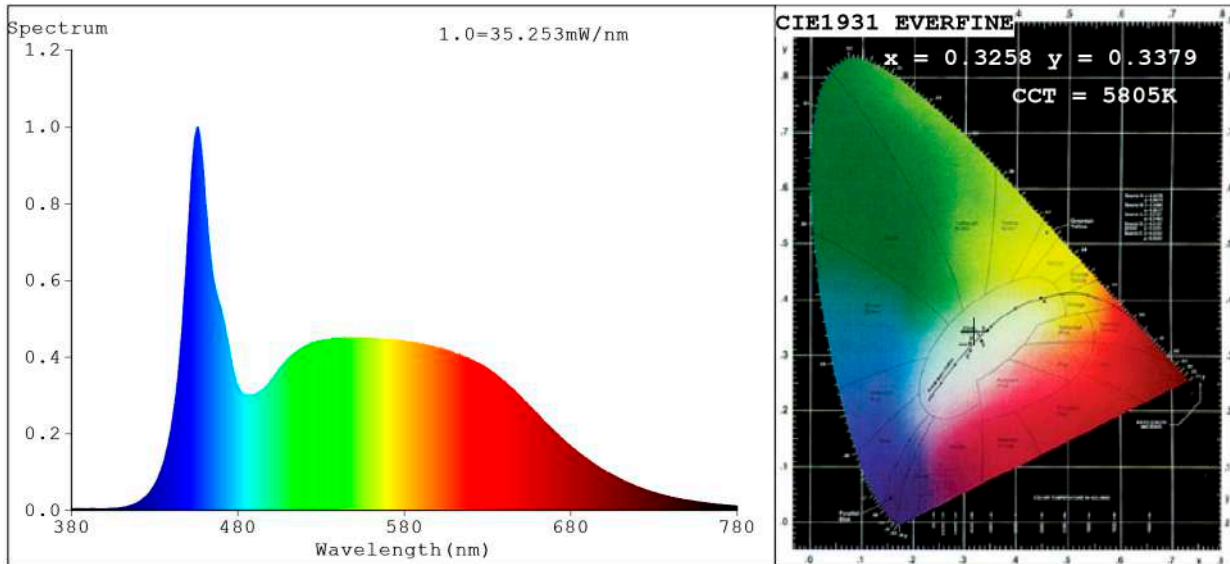


**BARCELONA**  
 C/ Carles Buhigues, 13  
 08420 Canovelles  
 Info@luznegra.net  
 Tel: +34 938 402 598

**MADRID**  
 C/ Adaptación, 27  
 28906 Getafe  
 centro@luznegra.net  
 Tel: +34 916 416 081

**PARIS**  
 113 Avenue Joffre  
 77450 Esbly  
 france@luznegra.net  
 Tel: +33 (0) 160 426 585

**Spectrum Test Report**



**Color Parameters:**

Chromaticity Coordinate:  $x=0.3258$   $y=0.3379$  /  $u'=0.2035$   $v'=0.4750$   
 CCT=5805K (Duv=0.0014) Dominant WL:Ld =499.8nm Purity=2.3%  
 Ratio:R=15.8% G=78.0% B=6.3% ; Peak WL:Lp=456.0nm FWHM=24.4nm  
 Render Index:Ra=91.9 CRI=88.6 TM30:Rf=87 Rg=97  
 R1 =93 R2 =98 R3 =97 R4 =89 R5 =91 R6 =92 R7 =91  
 R8 =85 R9 =64 R10=92 R11=90 R12=66 R13=95 R14=99 R15=91

**Photo Parameters:**

Flux = 1089 lm Eff. : 113.94 lm/W Fe = 3.770 W Scotopic:2466.6 S/P:2.2654

**Electrical parameters:**

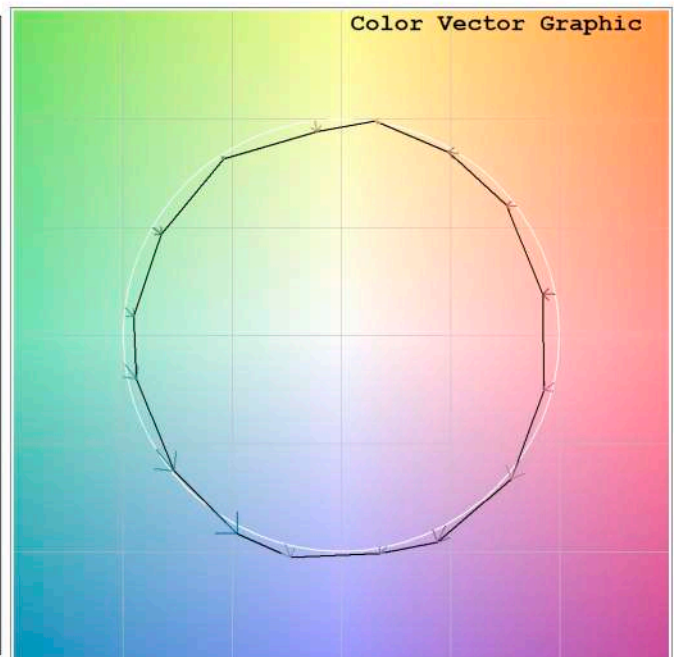
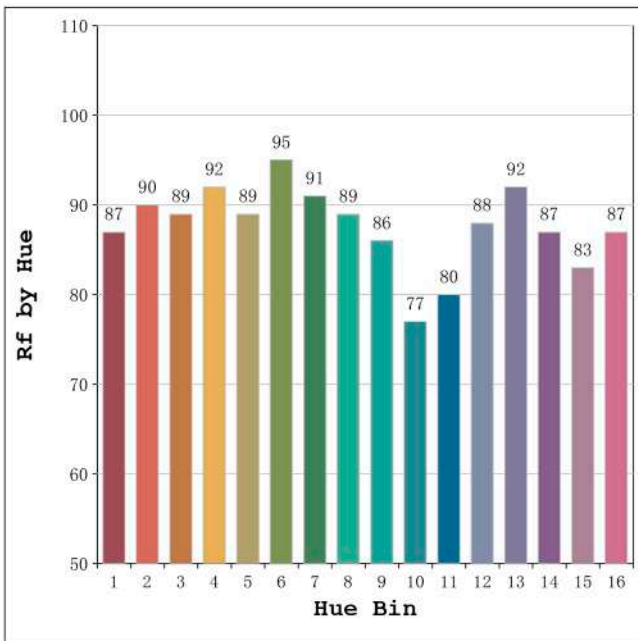
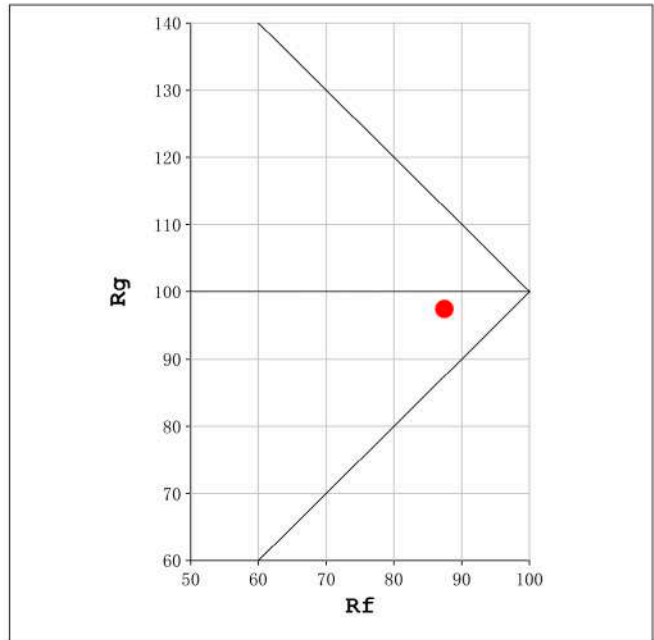
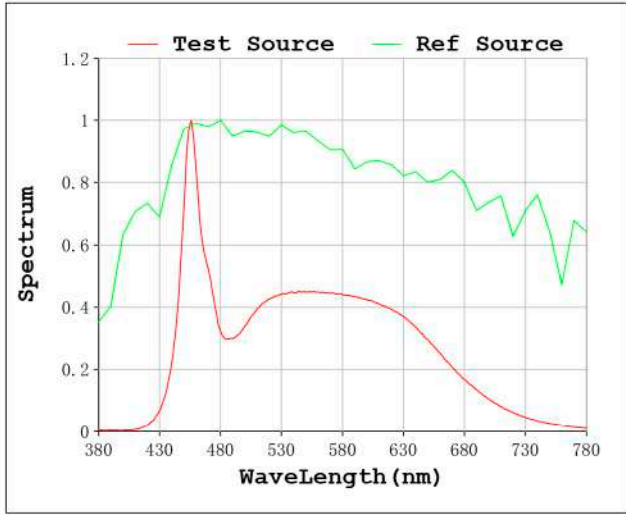
V = 23.998 V I = 0.3982 A P = 9.556 W PF = 1.000

Status: Integral T = 747 ms Ip = 43366 (66%)

Model:Ecoled Cob 6000K  
 Tester:Sergio Carneros  
 Temperature:25Deg  
 Manufacturer:Luz Negra S.L.

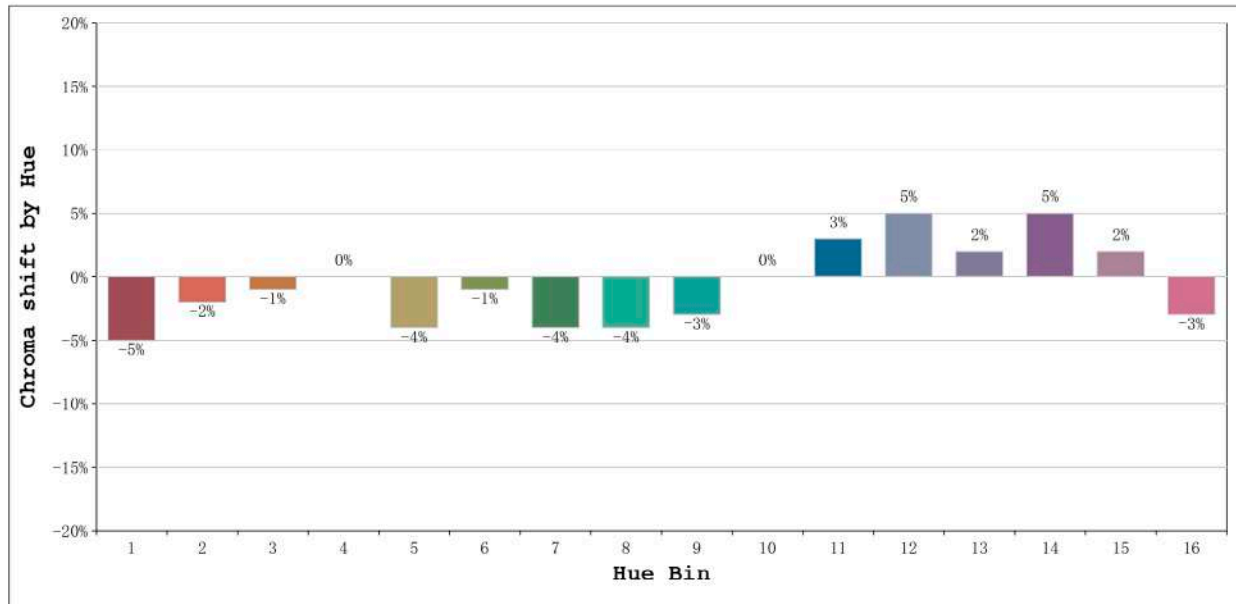
Number: 31.142  
 Date:2021-06-23 11:36:30  
 Humidity:57%  
 Remarks:100cm de tira flexible

Rf: 87      CCT: 5805 K      u': 0.2035  
Rg: 97      Duv: 0.0014      v': 0.4750



Model:Ecoled Cob 6000K  
Tester:Sergio Carneros  
Temperature:25Deg  
Manufacturer:Luz Negra S.L.

Number: 31.142  
Date:2021-06-23 11:36:30  
Humidity:57%  
Remarks:100cm de tira flexible

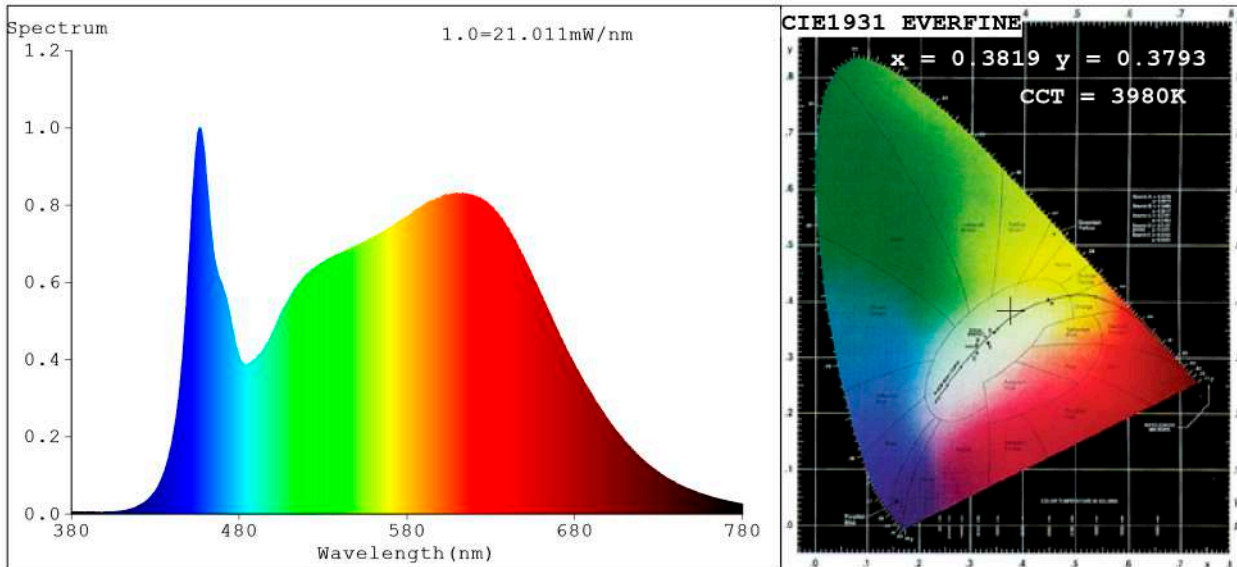


Hue Bin	Hue Angle	Rf	Graphic shift(%)	
			Chroma	Hue
1	0.0° - 22.5°	87	-5	1
2	22.5° - 45.0°	90	-2	3
3	45.0° - 67.5°	89	-1	5
4	67.5° - 90.0°	92	0	4
5	90.0° - 112.5°	89	-4	0
6	112.5° - 135.0°	95	-1	0
7	135.0° - 157.5°	91	-4	0
8	157.5° - 180.0°	89	-4	3
9	180.0° - 202.5°	86	-3	8
10	202.5° - 225.0°	77	0	13
11	225.0° - 247.5°	80	3	14
12	247.5° - 270.0°	88	5	4
13	270.0° - 292.5°	92	2	-3
14	292.5° - 315.0°	87	5	-6
15	315.0° - 337.5°	83	2	-8
16	337.5° - 360.0°	87	-3	-3

Model:Ecoled Cob 6000K  
 Tester:Sergio Carneros  
 Temperature:25Deg  
 Manufacturer:Luz Negra S.L.

Number: 31.142  
 Date:2021-06-23 11:36:30  
 Humidity:57%  
 Remarks:100cm de tira flexible

**Spectrum Test Report**



**Color Parameters:**

Chromaticity Coordinate: x=0.3819 y=0.3793/u'=0.2250 v'=0.5029  
 CCT=3980K (Duv=0.0008) Dominant WL:Ld =578.7nm Purity=28.5%  
 Ratio:R=19.9% G=75.6% B=4.5%; Peak WL:Lp=456.4nm FWHM=27.3nm  
 Render Index:Ra=93.0 CRI=90.1 TM30:Rf=88 Rg=97  
 R1 =94 R2 =98 R3 =98 R4 =90 R5 =92 R6 =95 R7 =91  
 R8 =85 R9 =66 R10=94 R11=91 R12=70 R13=96 R14=100 R15=91

**Photo Parameters:**

Flux = 1069 lm Eff. : 108.39 lm/W Fe = 3.624 W Scotopic:1945 S/P:1.8189

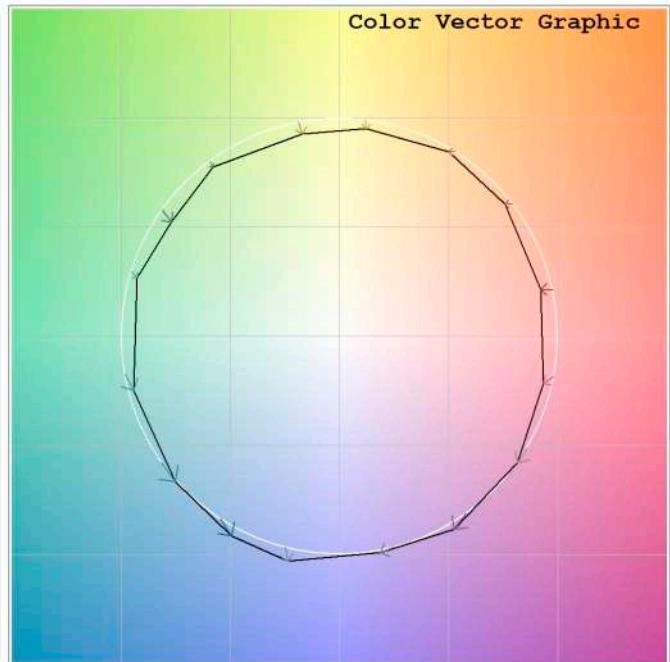
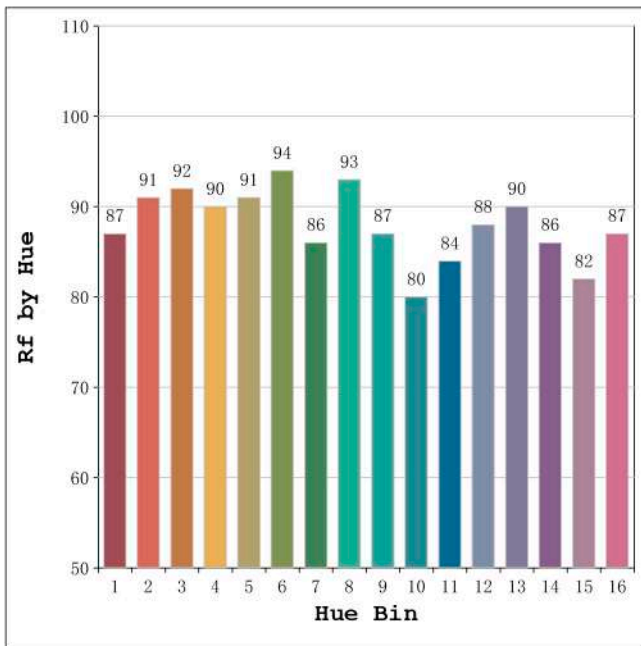
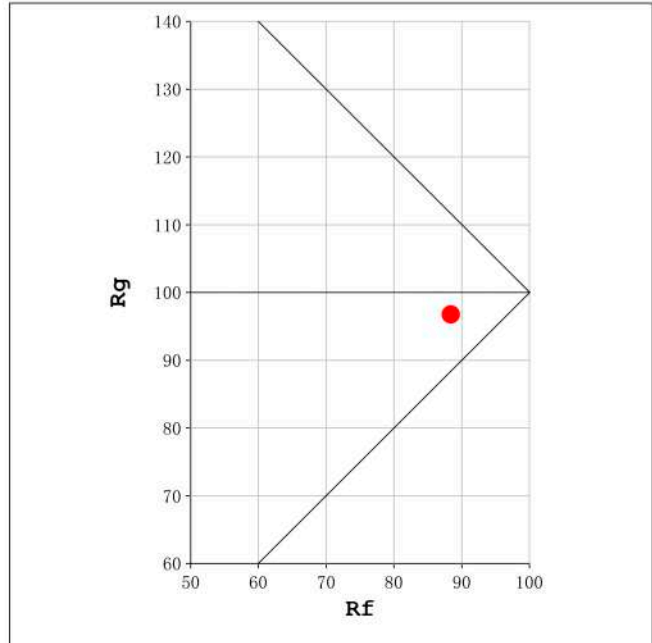
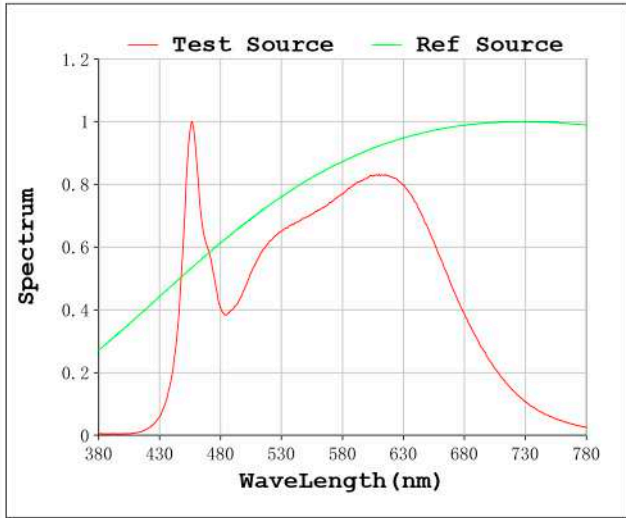
**Electrical parameters:**

V = 23.998 V I = 0.4111 A P = 9.866 W PF = 1.000

Status: Integral T = 1495 ms Ip = 54620 (83%)

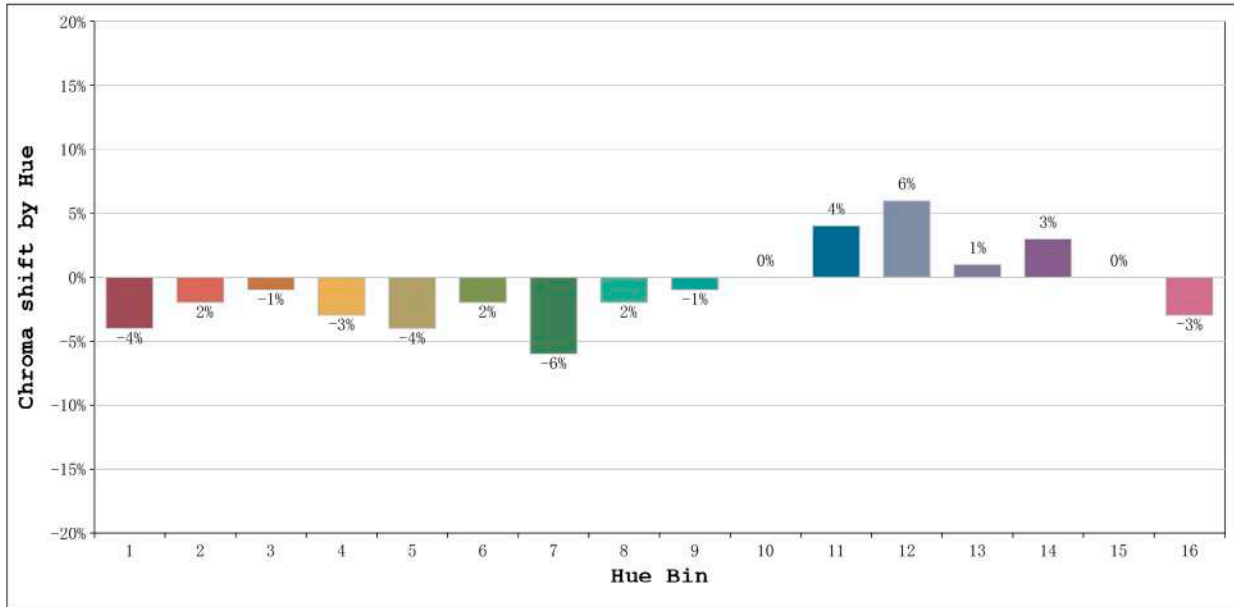
Model:Ecoled Cob 4000K	Number: 31.141
Tester:Sergio Carneros	Date:2021-06-23 11:15:55
Temperature:25Deg	Humidity:57%
Manufacturer:Luz Negra S.L.	Remarks:100cm de tira flexible

Rf: 88      CCT: 3980 K      u': 0.2250  
Rg: 97      Duv: 0.0008      v': 0.5029



Model:Ecoled Cob 4000K  
Tester:Sergio Carneros  
Temperature:25Deg  
Manufacturer:Luz Negra S.L.

Number: 31.141  
Date:2021-06-23 11:15:55  
Humidity:57%  
Remarks:100cm de tira flexible

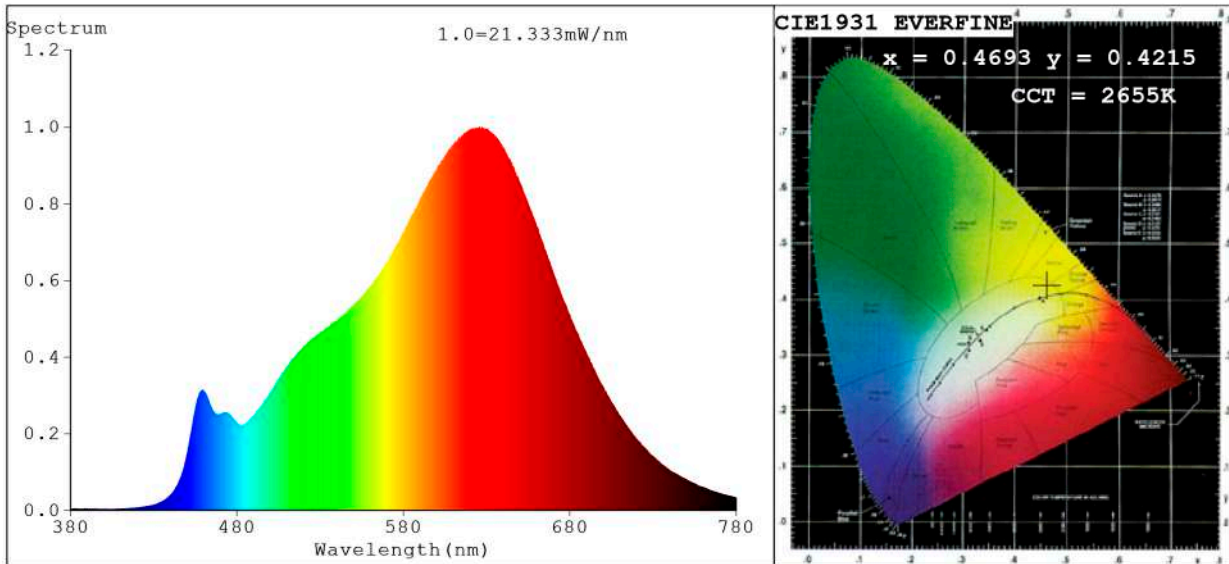


Hue Bin	Hue Angle	Rf	Graphic shift(%)	
			Chroma	Hue
1	0.0° - 22.5°	87	-4	1
2	22.5° - 45.0°	91	-2	2
3	45.0° - 67.5°	92	-1	3
4	67.5° - 90.0°	90	-3	0
5	90.0° - 112.5°	91	-4	0
6	112.5° - 135.0°	94	-2	0
7	135.0° - 157.5°	86	-6	2
8	157.5° - 180.0°	93	-2	3
9	180.0° - 202.5°	87	-1	8
10	202.5° - 225.0°	80	0	11
11	225.0° - 247.5°	84	4	9
12	247.5° - 270.0°	88	6	2
13	270.0° - 292.5°	90	1	-5
14	292.5° - 315.0°	86	3	-8
15	315.0° - 337.5°	82	0	-7
16	337.5° - 360.0°	87	-3	-3

Model:Ecoled Cob 4000K  
 Tester:Sergio Carneros  
 Temperature:25Deg  
 Manufacturer:Luz Negra S.L.

Number: 31.141  
 Date:2021-06-23 11:15:55  
 Humidity:57%  
 Remarks:100cm de tira flexible

**Spectrum Test Report**



**Color Parameters:**

Chromaticity Coordinate:  $x=0.4693$   $y=0.4215$  /  $u'=0.2637$   $v'=0.5328$   
 CCT=2655K (Duv=0.0032) Dominant WL:Ld =583.5nm Purity=67.4%  
 Ratio:R=26.8% G=70.6% B=2.6% ; Peak WL:Lp=625.7nm FWHM=139.0nm  
 Render Index:Ra=93.0 CRI=90.7 TM30:Rf=87 Rg=94  
 R1 =94 R2 =98 R3 =98 R4 =92 R5 =93 R6 =98 R7 =90  
 R8 =80 R9 =59 R10=95 R11=94 R12=84 R13=95 R14=99 R15=88

**Photo Parameters:**

Flux = 955.1 lm Eff. : 95.21 lm/W Fe = 3.342 W Scotopic:1219.3 S/P:1.2767

**Electrical parameters:**

V = 23.998 V I = 0.4180 A P = 10.03 W PF = 1.000

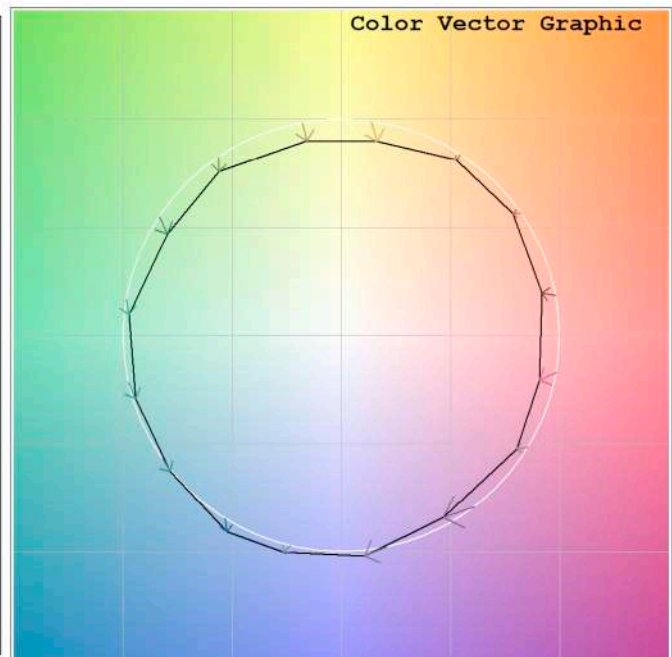
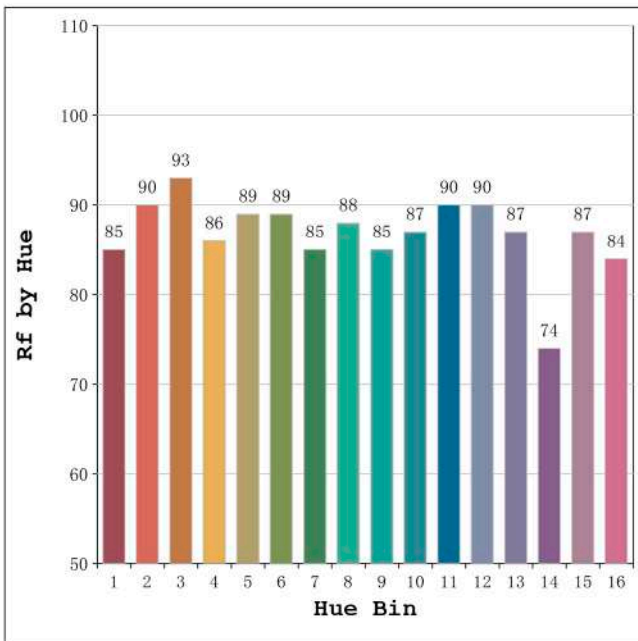
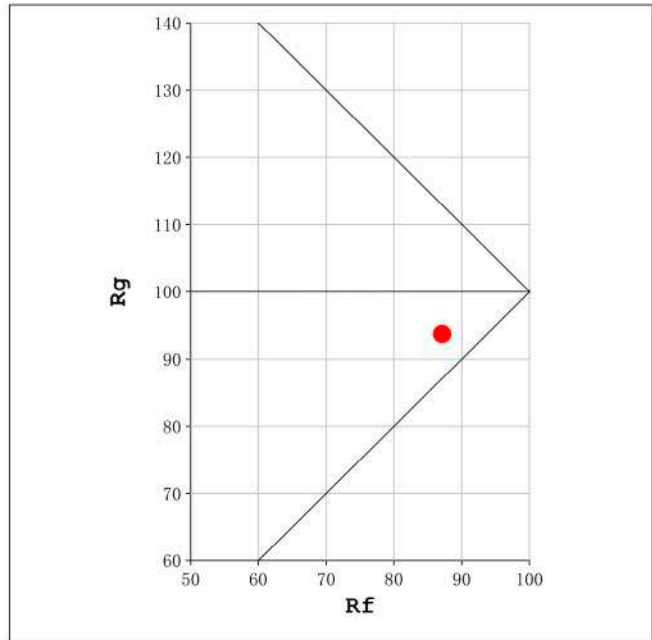
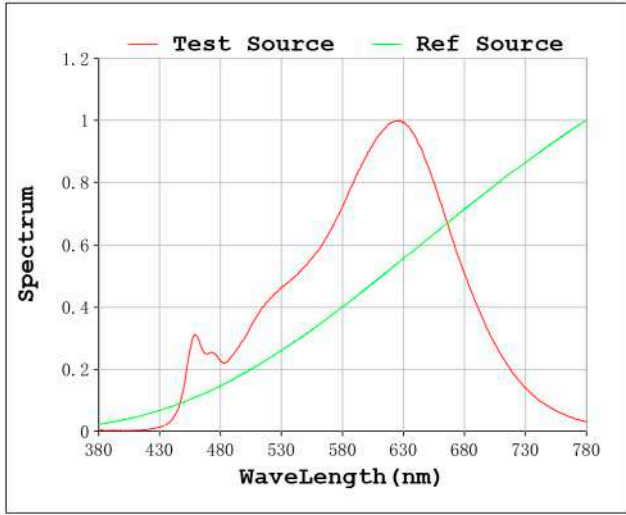
Status: Integral T = 1289 ms Ip = 52855 (81%)

Model:Ecoled COB 5mm 2700K  
 Tester:Marçal Huguet  
 Temperature:25Deg  
 Manufacturer:Luz Negra S.L

Number:31.140  
 Date:2021-06-28 15:48:32  
 Humidity:57%  
 Remarks:100cm de tira flexible

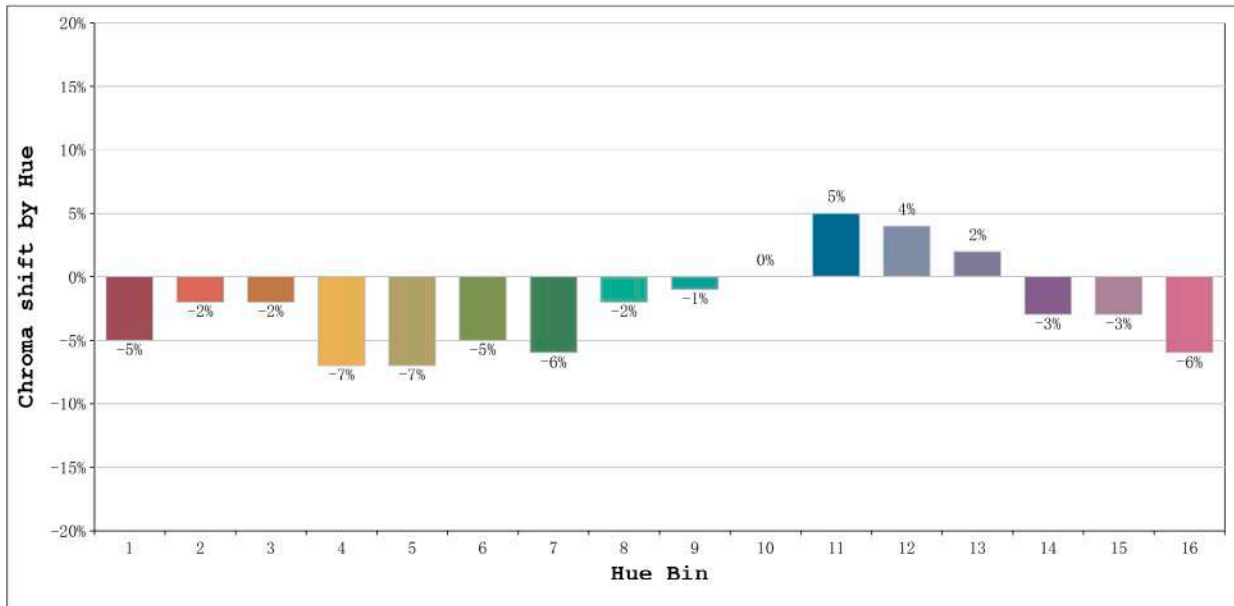


Rf: 87      CCT: 2655 K      u': 0.2637  
Rg: 94      Duv: 0.0032      v': 0.5328



Model:Ecoled COB 5mm 2700K  
Tester:Marçal Huguet  
Temperature:25Deg  
Manufacturer:Luz Negra S.L

Number:31.140  
Date:2021-06-28 15:48:32  
Humidity:57%  
Remarks:100cm de tira flexible



Hue Bin	Hue Angle	Rf	Graphic shift(%)	
			Chroma	Hue
1	0.0° - 22.5°	85	-5	2
2	22.5° - 45.0°	90	-2	2
3	45.0° - 67.5°	93	-2	0
4	67.5° - 90.0°	86	-7	-4
5	90.0° - 112.5°	89	-7	0
6	112.5° - 135.0°	89	-5	3
7	135.0° - 157.5°	85	-6	4
8	157.5° - 180.0°	88	-2	7
9	180.0° - 202.5°	85	-1	8
10	202.5° - 225.0°	87	0	7
11	225.0° - 247.5°	90	5	4
12	247.5° - 270.0°	90	4	-2
13	270.0° - 292.5°	87	2	-10
14	292.5° - 315.0°	74	-3	-13
15	315.0° - 337.5°	87	-3	-3
16	337.5° - 360.0°	84	-6	-4

Model:Ecoled COB 5mm 2700K  
 Tester:Marçal Huguet  
 Temperature:25Deg  
 Manufacturer:Luz Negra S.L

Number:31.140  
 Date:2021-06-28 15:48:32  
 Humidity:57%  
 Remarks:100cm de tira flexible