

## MEDIUM BRIGHTNESS

## ALICANTE

## FLEXIBLE STRIP

Ref: 32.010

RGB

Flexible led strip **RGB "PRO"**

IP20 with 60 leds/metre 3535SMD.

Requires use with led profile to permit dissipation.

**Heat dissipation tape included.**

**6mm PCB**

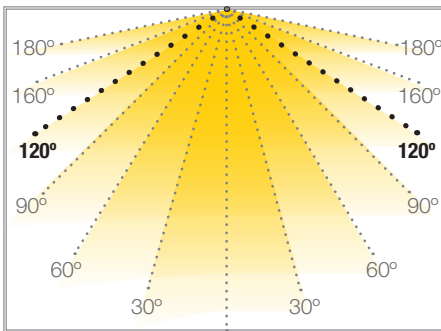
Daily recommended use: 18h

Maximum connection in open circuit: 2.5m

Maximum connection in closed circuit: 5m

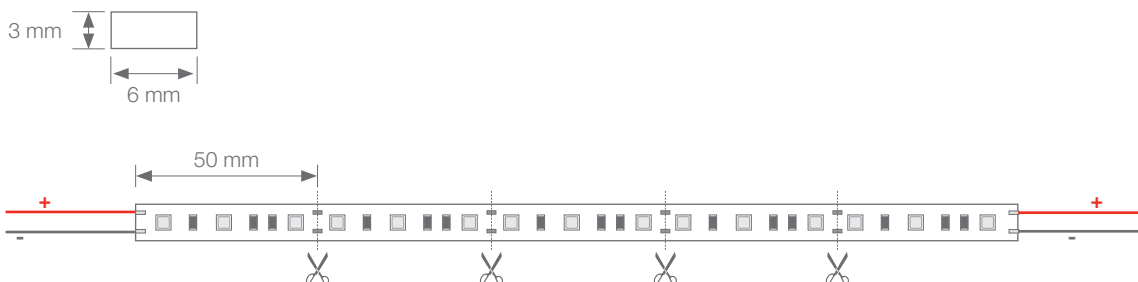
Vida útil: 50.000h\*

\*En función de la disipación del perfil, de las horas diarias trabajadas y de la temperatura externa ambiental de trabajo.



Power (W)	14.4W/m
Voltage (V)	12V
Led type	SMD3535
Lumens <sup>(white)</sup>	400 Lm/m
CRI	>30
Light emission	120°
Waterproofing	IP20
N° leds/m	60
Measurements	5000x6x3mm
Cuttable*	every 50mm
PCB	6mm
Working temperature	-20°C / +40°C
Secuencer	not included
Apt for	indoor
Packaging	1 roll/5m
Guarantee	3 years

Aprobado por: 

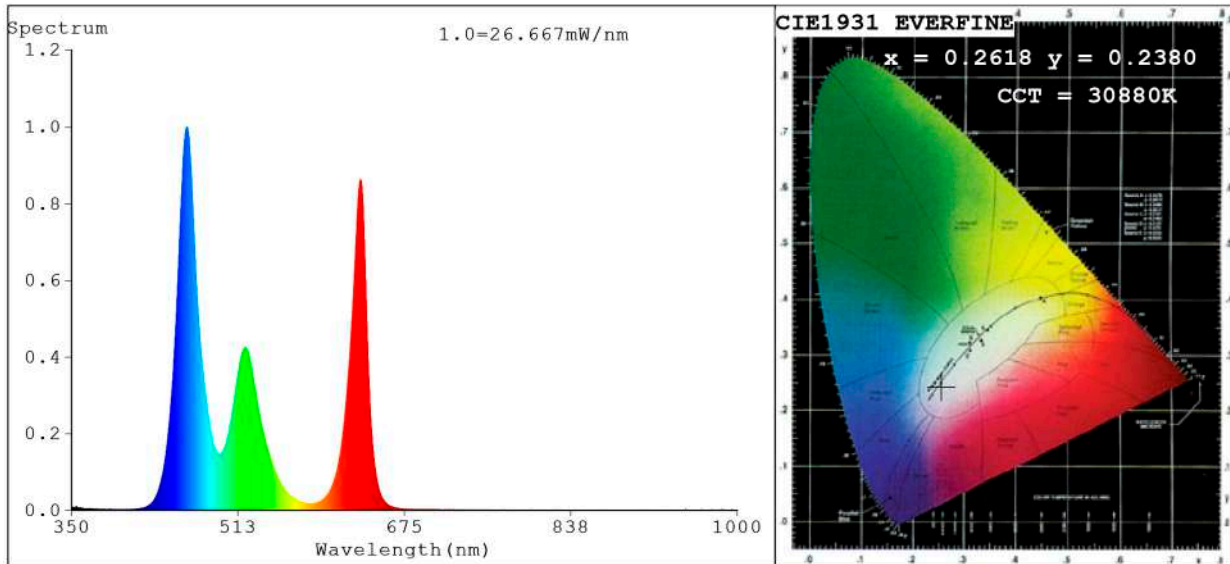


**BARCELONA**  
C/ Carles Buhigues, 13  
08420 Canovelles  
Info@luznegra.net  
Tel: +34 938 402 598

**MADRID**  
C/ Adaptación, 27  
28906 Getafe  
centro@luznegra.net  
Tel: +34 916 416 081

**PARIS**  
113 Avenue Joffre  
77450 Esbly  
france@luznegra.net  
Tel: +33 (0) 160 426 585

**Spectrum Test Report**



**Color Parameters:**

Chromaticity Coordinate:  $x=0.2618$   $y=0.2380$  /  $u'=0.1964$   $v'=0.4017$   
 CCT=30880K (Duv=-0.0148) Dominant WL:Ld =469.5nm Purity=34.4%  
 Ratio:R=26.4% G=60.9% B=12.8%; Peak WL:Lp=462.5nm FWHM=21.7nm  
 Render Index:Ra=30.7 CRI=26.6 TM30:Rf=36 Rg=122  
 R1 =0 R2 =41 R3 =71 R4 =18 R5 =24 R6 =41 R7 =50  
 R8 =0 R9 =0 R10=0 R11=1 R12=45 R13=4 R14=76 R15=0

**Photo Parameters:**

Flux = 334.5 lm Eff. : 27.15 lm/W Fe = 1.597 W Scotopic:1320.6 S/P:3.9475

**Electrical parameters:**

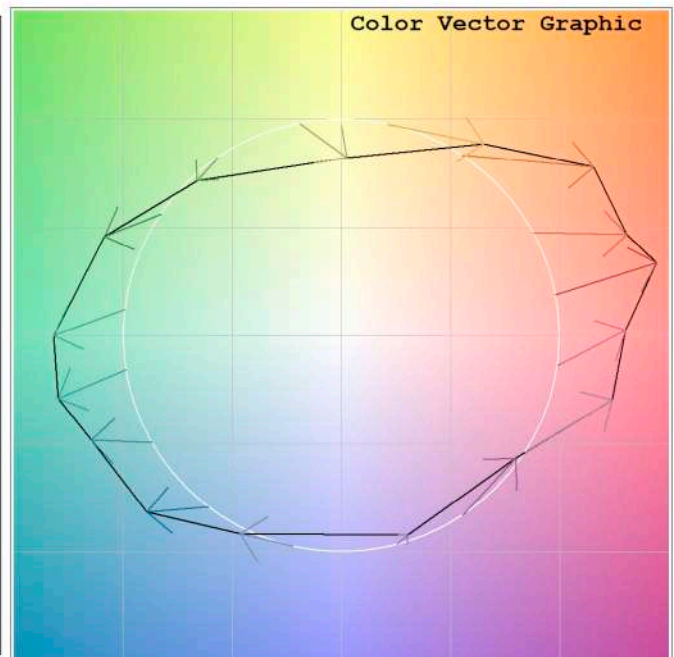
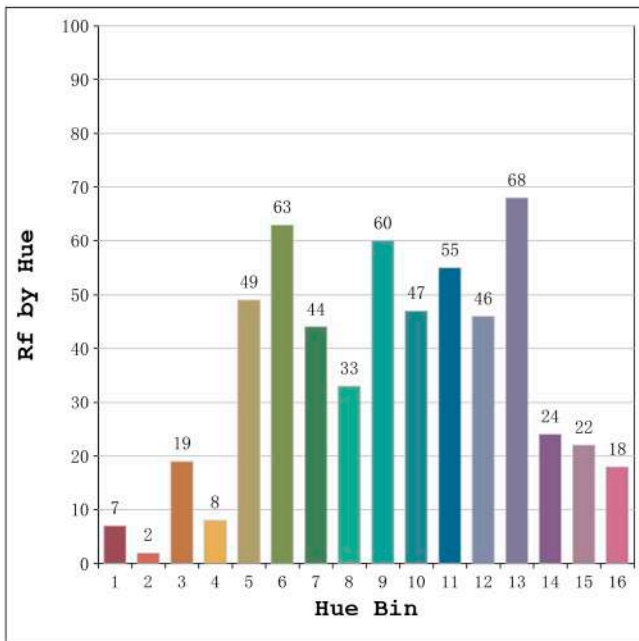
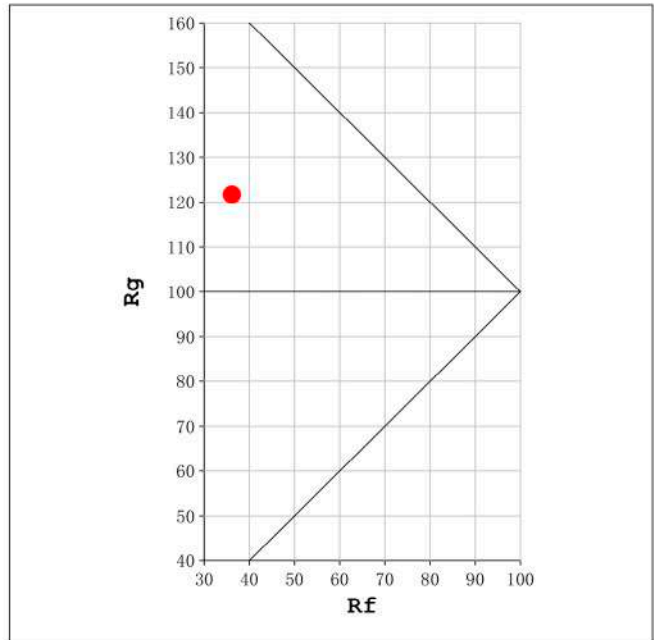
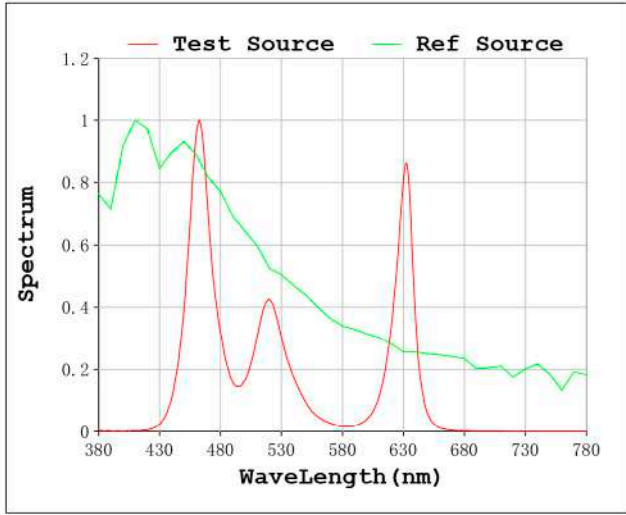
V = 11.998 V I = 1.027 A P = 12.32 W PF = 1.000

Status: Integral T = 1034 ms Ip = 48522 (74%)

Model:Ecoled Alicante  
 Tester:Sergio Carneros  
 Temperature:21Deg  
 Manufacturer:Luz Negra S.L

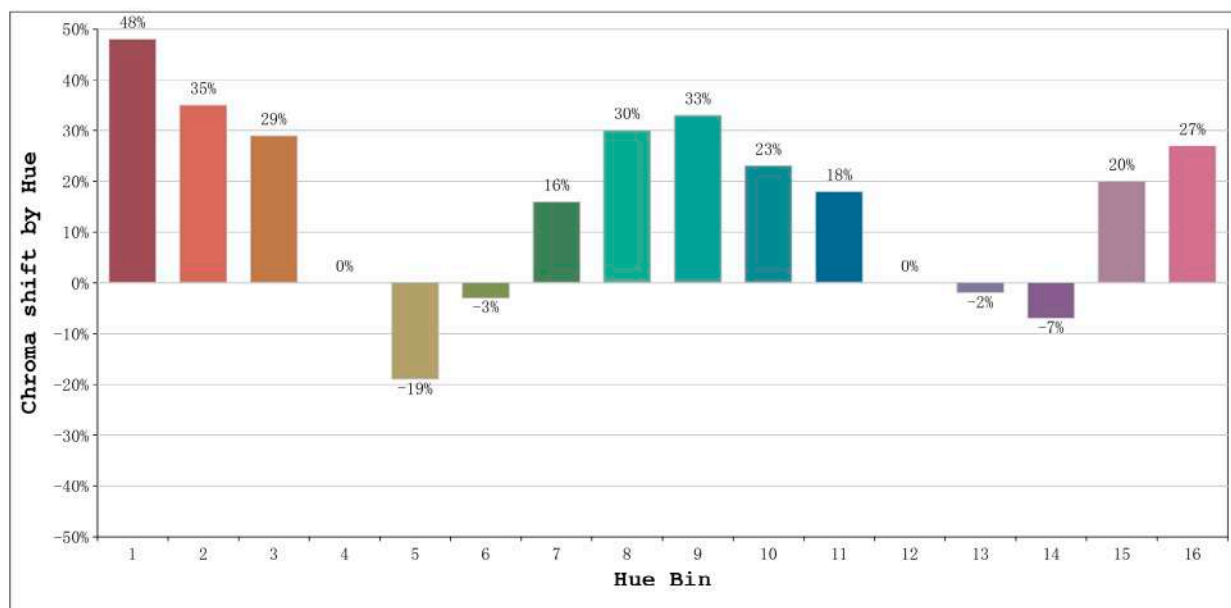
Number: 32.010  
 Date:25-5-2021  
 Humidity:70.0%  
 Remarks:100cm de tira flexible

Rf: 36 CCT: 30880 K u': 0.1964  
Rg: 122 Duv: -0.0148 v': 0.4017



Model:Ecoled Alicante  
Tester:Sergio Carneros  
Temperature:21Deg  
Manufacturer:Luz Negra S.L

Number: 32.010  
Date:25-5-2021  
Humidity:70.0%  
Remarks:100cm de tira flexible

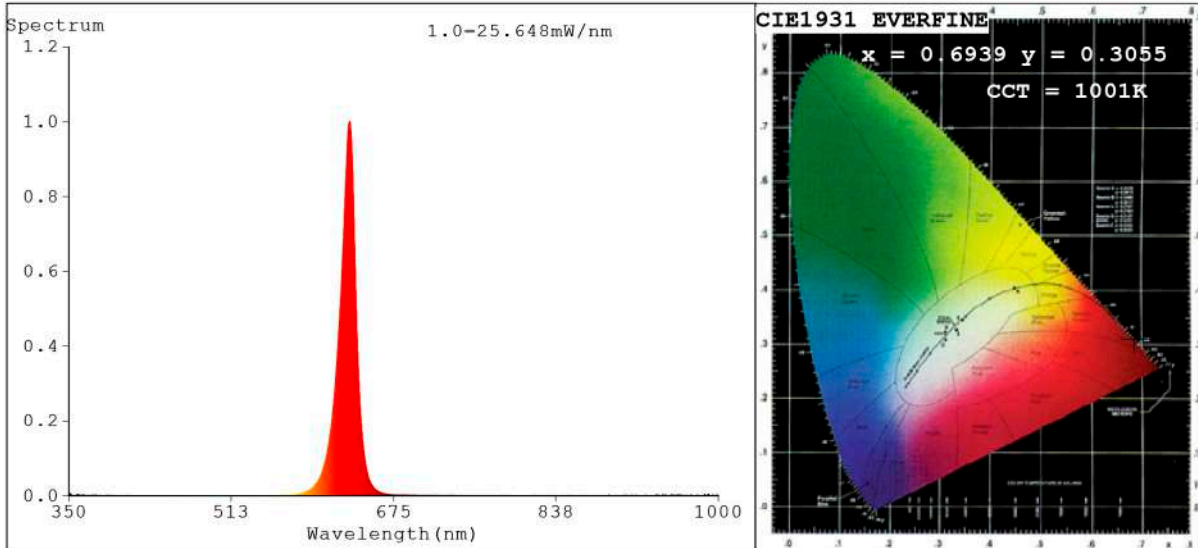


Hue Bin	Hue Angle	Rf	Graphic shift(%)	
			Chroma	Hue
1	0.0° - 22.5°	7	48	5
2	22.5° - 45.0°	2	35	-24
3	45.0° - 67.5°	19	29	-52
4	67.5° - 90.0°	8	0	-44
5	90.0° - 112.5°	49	-19	-17
6	112.5° - 135.0°	63	-3	14
7	135.0° - 157.5°	44	16	23
8	157.5° - 180.0°	33	30	18
9	180.0° - 202.5°	60	33	7
10	202.5° - 225.0°	47	23	-15
11	225.0° - 247.5°	55	18	-21
12	247.5° - 270.0°	46	0	-24
13	270.0° - 292.5°	68	-2	6
14	292.5° - 315.0°	24	-7	35
15	315.0° - 337.5°	22	20	42
16	337.5° - 360.0°	18	27	23

Model:Ecoled Alicante  
 Tester:Sergio Carneros  
 Temperature:21Deg  
 Manufacturer:Luz Negra S.L

Number: 32.010  
 Date:25-5-2021  
 Humidity:70.0%  
 Remarks:100cm de tira flexible

**Spectrum Test Report**



**Color Parameters:**

Chromaticity Coordinate:  $x=0.6939$   $y=0.3055$   $u'=0.5259$   $v'=0.5209$   
 CCT=1001K(Duv=-0.0784) Dominant WL:Ld =621.5nm Purity=99.8%  
 Ratio:R=95.8% G=4.2% B=0.0%; Peak WL:Lp=631.0nm FWHM=16.0nm  
 Render Index:Ra=26.9 CRI=32.6 TM30:Rf=11 Rg=-1  
 R1 =8 R2 =78 R3 =31 R4 =0 R5 =2 R6 =90 R7 =6  
 R8 =0 R9 =0 R10=72 R11=0 R12=79 R13=30 R14=60 R15=0

**Photo Parameters:**

Flux = 103.5 lm Eff. : 23.55 lm/W Fe = 510.7 mW Scotopic:5.633 S/P:0.054436

**Electrical parameters:**

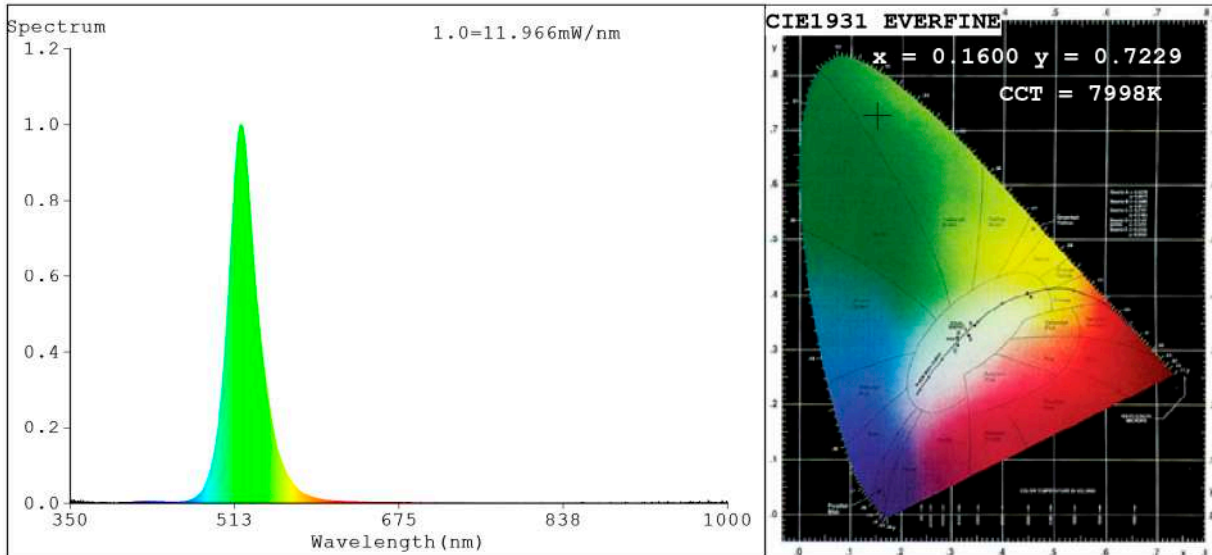
V = 11.998 V I = 0.3662 A P = 4.394 W PF = 1.000

Status: Integral T = 984 ms Ip = 38939 (59%)

Model:Alicante rojo  
 Tester:Sergio Carneros  
 Temperature:21Deg  
 Manufacturer:Luz Negra S.L

Number: 32.010  
 Date:25-5-2021  
 Humidity:70.0%  
 Remarks:100cm de tira flexible

**Spectrum Test Report**



**Color Parameters:**

Chromaticity Coordinate:  $x=0.1600$   $y=0.7229$   $u'=0.0564$   $v'=0.5730$   
 CCT=7998K (Duv=0.1600) Dominant WL:Ld =525.0nm Purity=79.0%  
 Ratio:R=0.3% G=97.5% B=2.2%; Peak WL:Lp=518.4nm FWHM=30.2nm  
 Render Index:Ra=0.0 CRI=2.9 TM30:Rf=1 Rg=8  
 R1 =0 R2 =0 R3 =0 R4 =0 R5 =0 R6 =0 R7 =0  
 R8 =0 R9 =0 R10=0 R11=0 R12=0 R13=0 R14=40 R15=0

**Photo Parameters:**

Flux = 208.5 lm Eff. : 48.70 lm/W Fe = 440.3 mW Scotopic:611.83 S/P:2.9346

**Electrical parameters:**

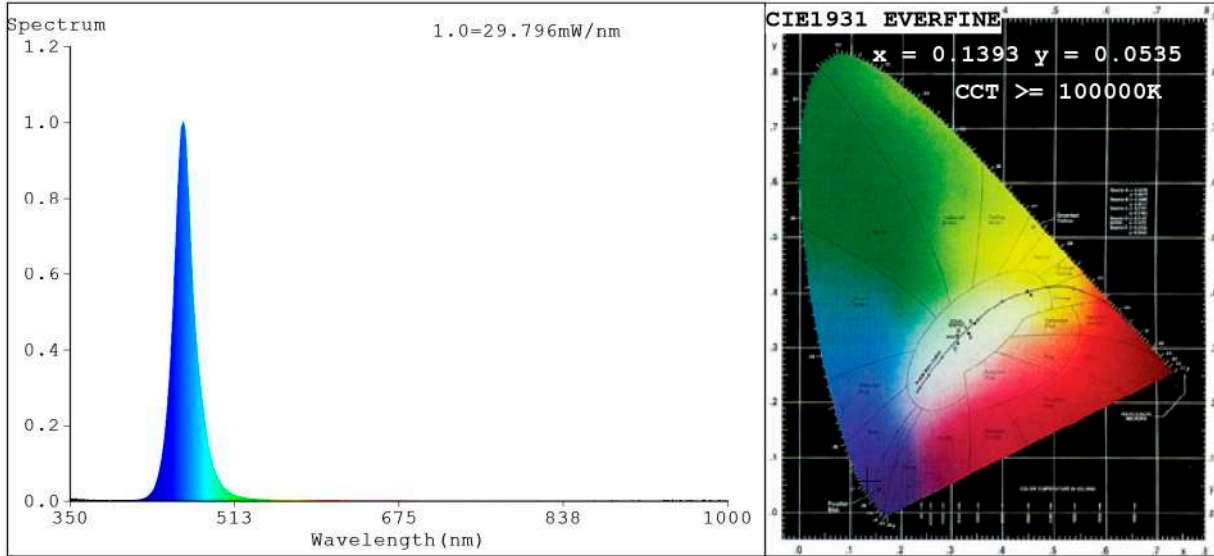
V = 11.998 V I = 0.3568 A P = 4.281 W PF = 1.000

Status: Integral T = 1969 ms Ip = 49713 (76%)

Model:Ecoled Alicante verde  
 Tester:Sergio Carneros  
 Temperature:21Deg  
 Manufacturer:Luz Negra S.L

Number: 32.010  
 Date:25-5-2021  
 Humidity:70.0%  
 Remarks:100cm de tira flexible

**Spectrum Test Report**



**Color Parameters:**

Chromaticity Coordinate: x=0.1393 y=0.0535/u'=0.1657 v'=0.1431  
 CCT=100000K (Duv=0.1712) Dominant WL:Ld =466.4nm Purity=96.7%  
 Ratio:R=0.8% G=16.6% B=82.5%; Peak WL:Lp=461.5nm FWHM=20.6nm  
 Render Index:Ra=1.1 CRI=0.6 TM30:Rf=0 Rg=119  
 R1 =0 R2 =0 R3 =0 R4 =0 R5 =9 R6 =0 R7 =0  
 R8 =0 R9 =0 R10=0 R11=0 R12=0 R13=0 R14=0 R15=6

**Photo Parameters:**

Flux = 48.74 lm Eff. : 11.16 lm/W Fe = 775.9 mW Scotopic:794.03 S/P:16.291

**Electrical parameters:**

V = 11.998 V I = 0.3641 A P = 4.368 W PF = 1.000

Status: Integral T = 1034 ms Ip = 54195 (83%)

Model:Ecoled Alicante azul  
 Tester:Sergio Carneros  
 Temperature:21Deg  
 Manufacturer:Luz Negra S.L

Number: 32.010  
 Date:25-5-2021  
 Humidity:70.0%  
 Remarks:100cm de tria flexible