

MEDIA LUMINOSIDAD

ÁGATA

TIRAS FLEXIBLES

Ref: 30.016

RGB

Tira flexible **RGB** serie "**BASIC**"

IP65 con 60 leds/metro 5050SMD.

Requiere uso de led profile para disipación.

PCB 10mm

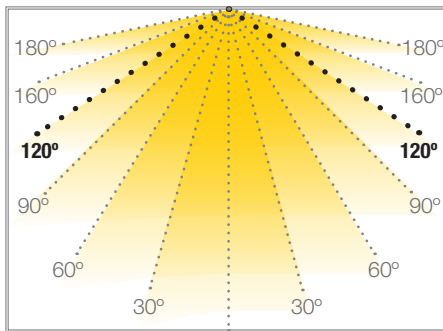
Uso diario máximo recomendado: 18h

Conexión máxima en circuito abierto: 5m

Conexión máxima en circuito cerrado: 10m

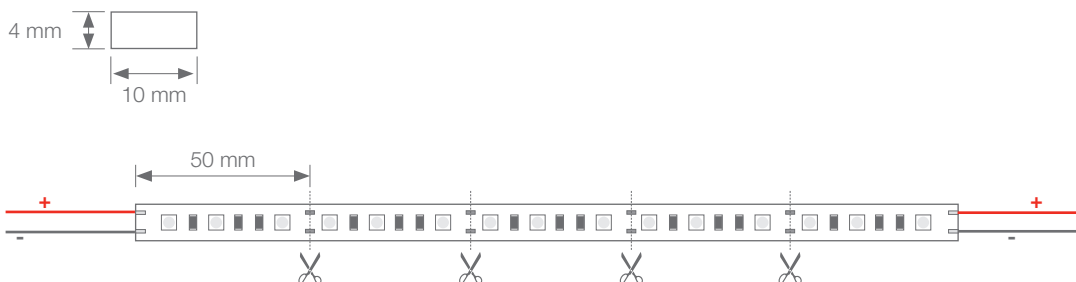
Vida útil: 30.000h*

*En función de la disipación del perfil, de las horas diarias trabajadas y de la temperatura externa ambiental de trabajo.

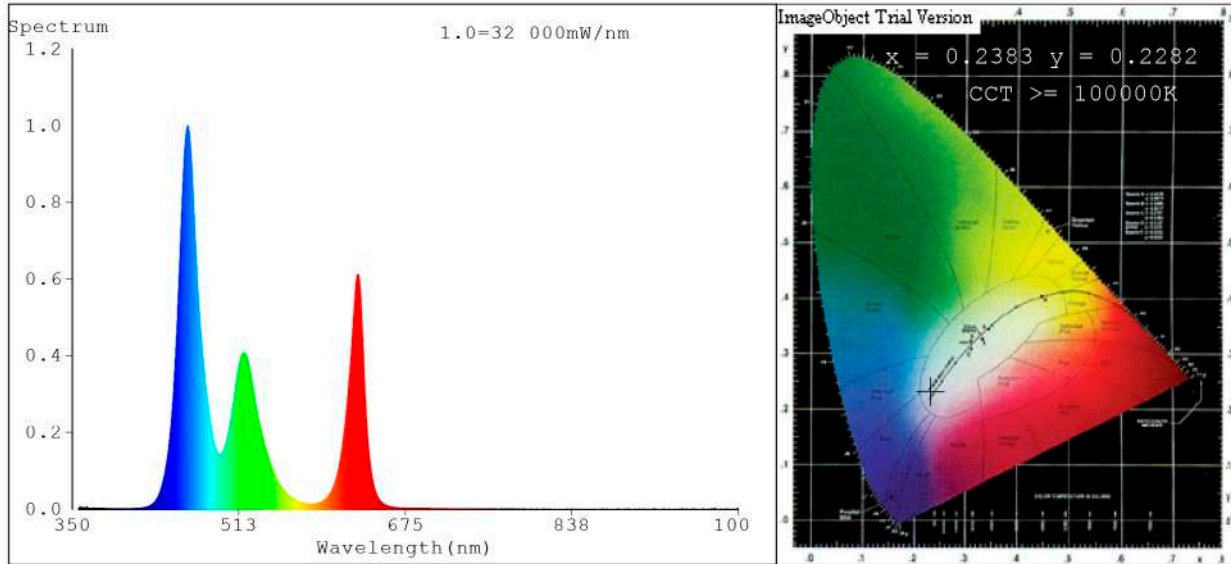


Potencia (W)	14.4W/m
Voltaje (V)	12V
Tipo Led	SMD5050
Lumens (blanco)	350 Lm/m
CRI	>30
Emisión de luz	120°
Estanqueidad (IP)	IP65
Nº leds/m	60
Medidas	5000x10x4mm
Cortable	cada 50mm
PCB	10mm
Temperatura trabajo	-20°C / +45°C
Secuenciador	no incluido
Apto para	interior/exterior
Embalaje	1 rollo/5m
Garantía	2 años

Aprobado por: 



Spectrum Test Report



Color Parameters:

Chromaticity Coordinate: $x=0.2383$ $y=0.2282$ $u'=0.1812$ $v'=0.3904$
 CCT=100000K(Duv=-0.0057) Dominant WL:Ld =474.9nm Purity=42.5%
 Ratio:R=23.1% G=62.4% B=14.5%;;Peak WL:Lp=462.5nm FWHM=21.4nm
 Render Index:Ra=41.4 CRI=37.1 TM30:Rf=41 Rg=115
 R1 =21 R2 =47 R3 =68 R4 =46 R5 =45 R6 =47 R7 =57
 R8 =0 R9 =0 R10=0 R11=35 R12=53 R13=23 R14=77 R15=2

Photo Parameters:

Flux = 351.6 lm Eff. : 27.74 lm/W Fe = 1.689 W Scotopic:1533.3 S/P:4.3612

Electrical parameters:

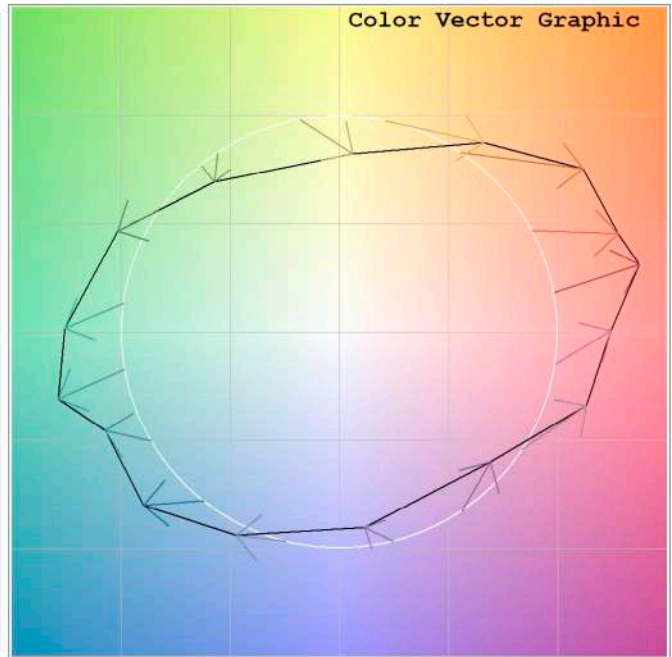
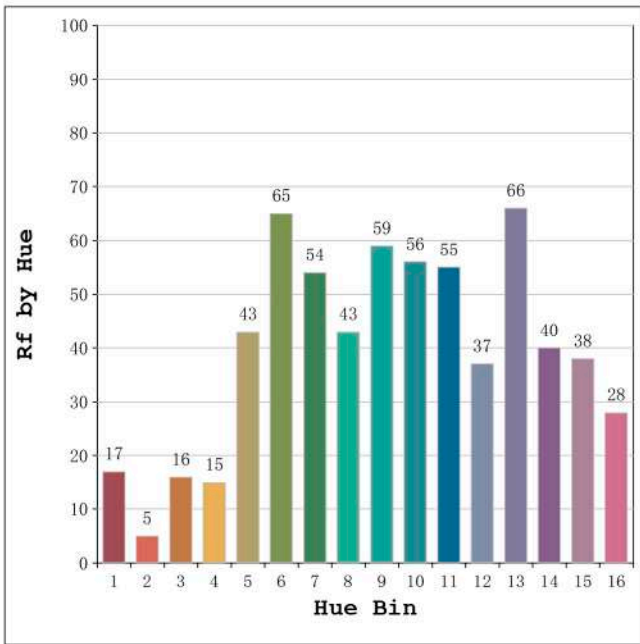
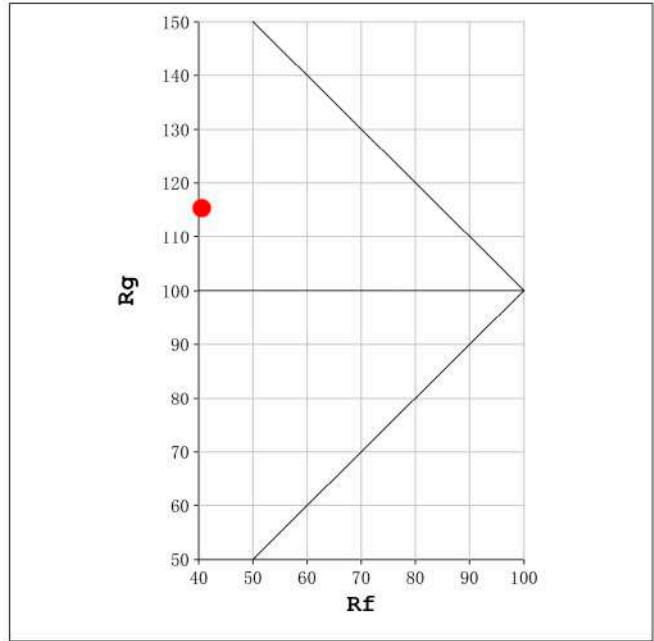
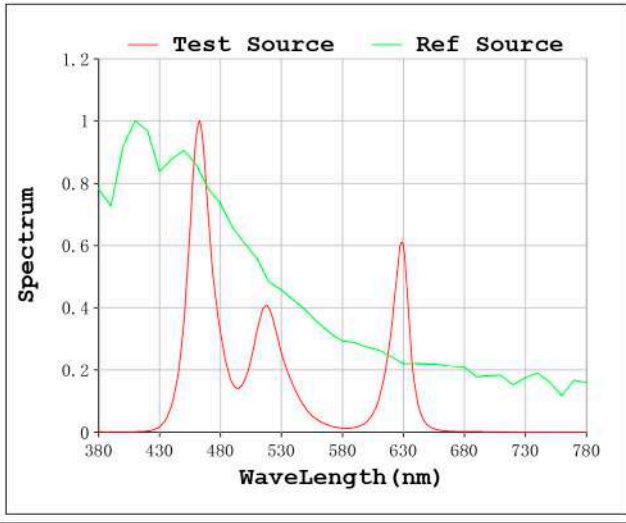
V = 11.998 V I = 1.056 A P = 14.68 W PF = 1.000

Status: Integral T = 883 ms Ip = 49723 (76%)

Model:Ecolde Ágata Blanco
 Tester:Sergio Carneros
 Temperature:21Deg
 Manufacturer:Luz Negra S.L

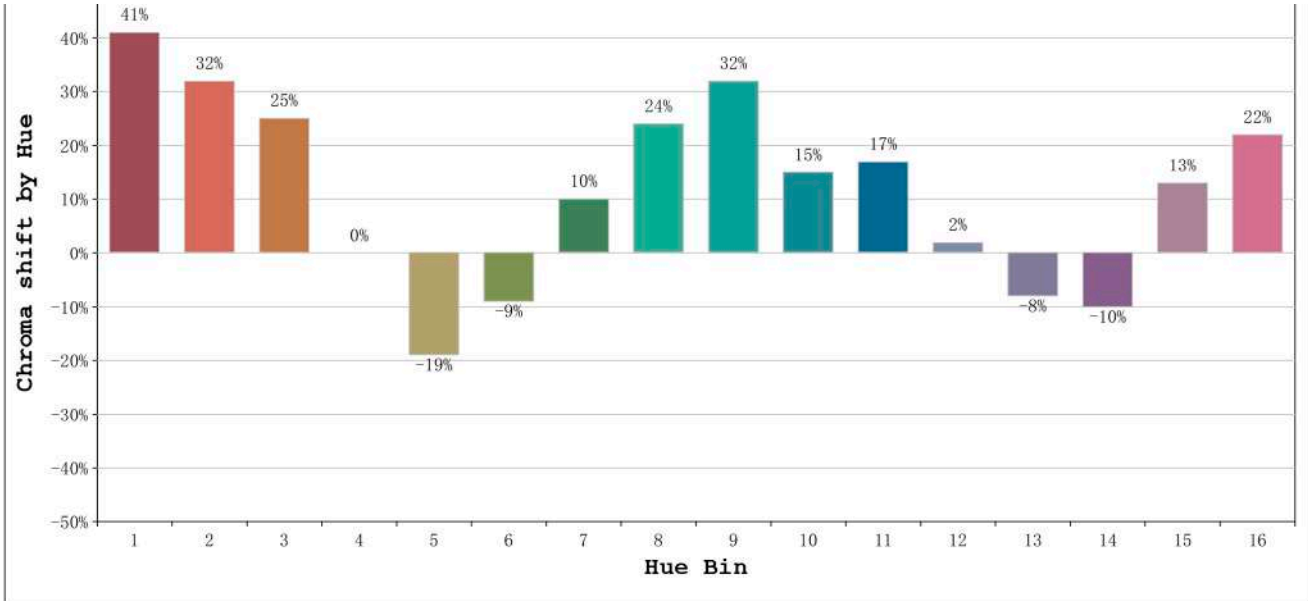
Number: 30.016
 Date:25-5-2021
 Humidity:70.0%
 Remarks:100cm de tira flexible

Rf: 41 CCT: 100000 K u': 0.1812
Rg: 115 Duv: -0.0057 v': 0.3904



Model: Ecolde Ágata Blanco
Tester: Sergio Carneros
Temperature: 21Deg
Manufacturer: Luz Negra S.L

Number: 30.016
Date: 25-5-2021
Humidity: 70.0%
Remarks: 100cm de tira flexible

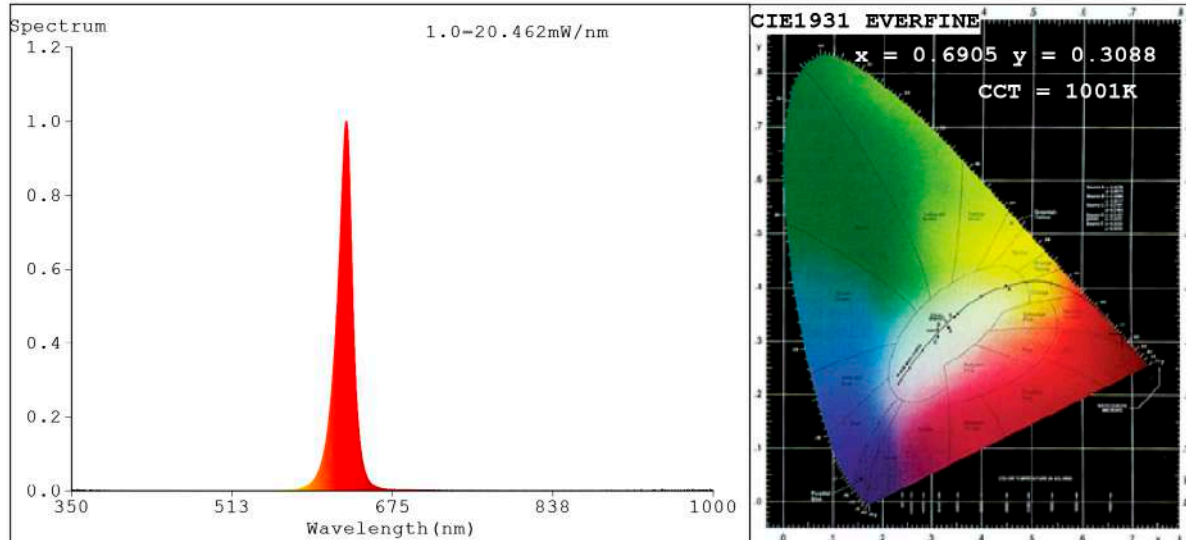


Hue Bin	Hue Angle	Rf	Graphic shift(%)	
			Chroma	Hue
1	0.0° - 22.5°	17	41	5
2	22.5° - 45.0°	5	32	-22
3	45.0° - 67.5°	16	25	-50
4	67.5° - 90.0°	15	0	-45
5	90.0° - 112.5°	43	-19	-20
6	112.5° - 135.0°	65	-9	9
7	135.0° - 157.5°	54	10	19
8	157.5° - 180.0°	43	24	17
9	180.0° - 202.5°	59	32	8
10	202.5° - 225.0°	56	15	-15
11	225.0° - 247.5°	55	17	-21
12	247.5° - 270.0°	37	2	-22
13	270.0° - 292.5°	66	-8	-11
14	292.5° - 315.0°	40	-10	23
15	315.0° - 337.5°	38	13	33
16	337.5° - 360.0°	28	22	21

Model: Ecolde Ágata Blanco
 Tester: Sergio Carneros
 Temperature: 21Deg
 Manufacturer: Luz Negra S.L

Number: 30.016
 Date: 25-5-2021
 Humidity: 70.0%
 Remarks: 100cm de tira flexible

Spectrum Test Report



Color Parameters:

Chromaticity Coordinate: $x=0.6905$ $y=0.3088$ / $u'=0.5187$ $v'=0.5220$
 CCT=1001K (Duv=-0.0711) Dominant WL: $L_d = 619.7\text{nm}$ Purity=99.9%
 Ratio: R=95.4% G=4.6% B=0.0% ; Peak WL: $L_p = 628.6\text{nm}$ FWHM=16.1nm
 Render Index: Ra=26.4 CRI=32.2 TM30: Rf=5 Rg=-1
 R1 =7 R2 =78 R3 =30 R4 =0 R5 =1 R6 =90 R7 =5
 R8 =0 R9 =0 R10=72 R11=0 R12=79 R13=30 R14=60 R15=0

Photo Parameters:

Flux = 89.06 lm Eff. : 20.15 lm/W Fe = 408.6 mW Scotopic: 5.1656 S/P: 0.058004

Electrical parameters:

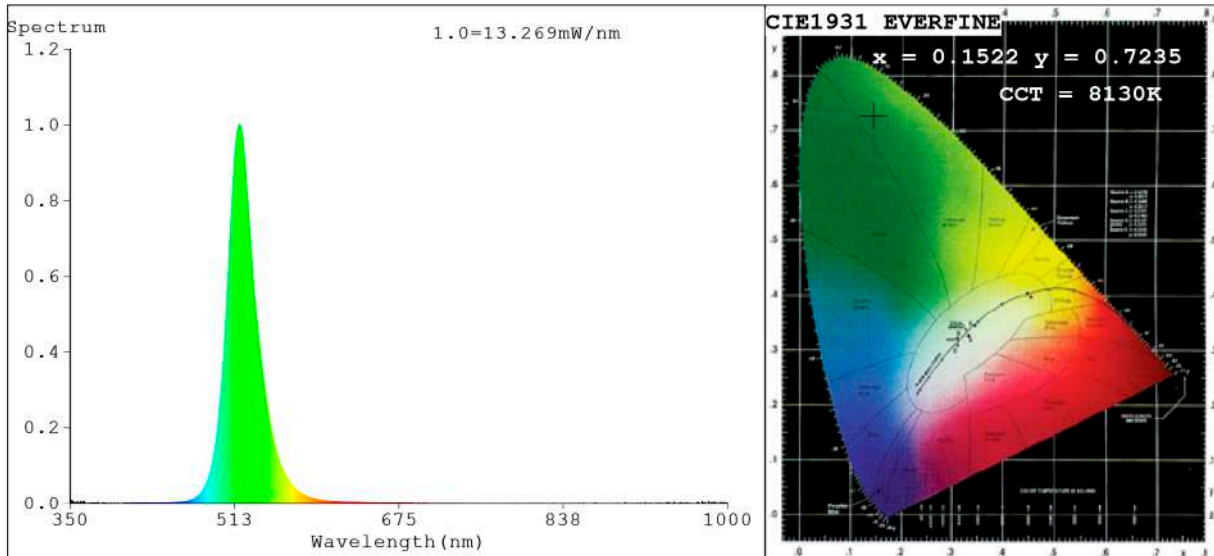
V = 11.998 V I = 0.3684 A P = 4.420 W PF = 1.000

Status: Integral T = 1558 ms Ip = 49627 (76%)

Model: Ecoled Ágata rojo
 Tester: Sergio Carneros
 Temperature: 21Deg
 Manufacturer: Luz Negra S.L

Number: 30.016
 Date: 25-1-2021
 Humidity: 70.0%
 Remarks: 100cm de tira flexible

Spectrum Test Report



Color Parameters:

Chromaticity Coordinate: $x=0.1522$ $y=0.7235$ / $u'=0.0535$ $v'=0.5723$
 CCT=8130K (Duv=0.1623) Dominant WL: $\lambda_d = 523.6\text{nm}$ Purity=78.5%
 Ratio: R=0.3% G=97.3% B=2.3% ; Peak WL: $\lambda_p = 517.3\text{nm}$ FWHM=29.5nm
 Render Index: Ra=0.0 CRI=2.7 TM30: Rf=0 Rg=8
 R1 =0 R2 =0 R3 =0 R4 =0 R5 =0 R6 =0 R7 =0
 R8 =0 R9 =0 R10=0 R11=0 R12=0 R13=0 R14=38 R15=0

Photo Parameters:

Flux = 220.8 lm Eff. : 50.20 lm/W Fe = 475.9 mW Scotopic: 672.01 S/P: 3.0437

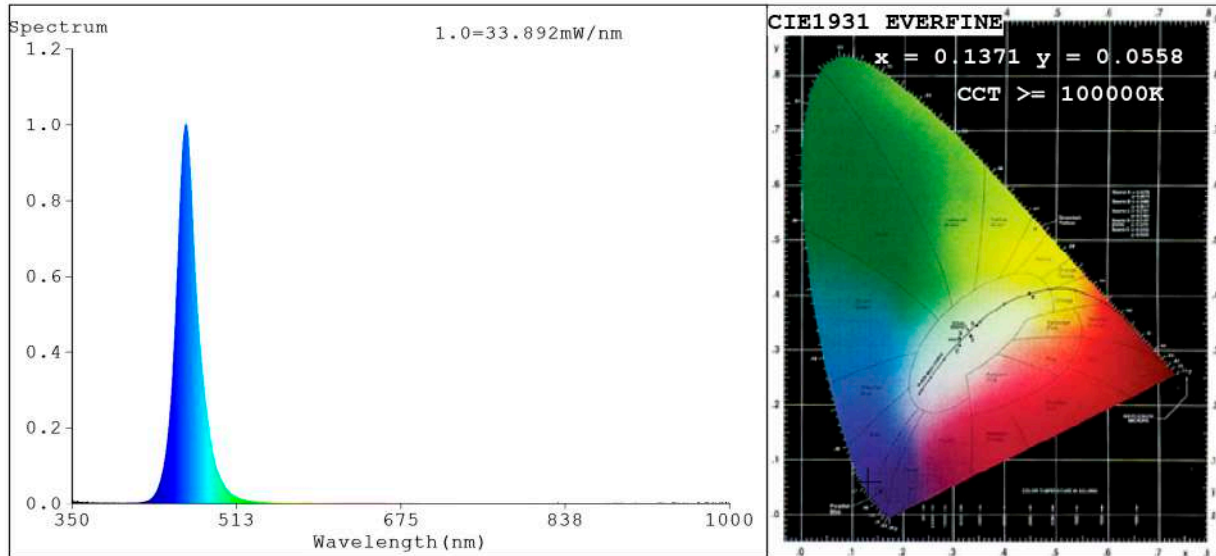
Electrical parameters:

V = 11.998 V I = 0.3666 A P = 4.398 W PF = 1.000

Status: Integral T = 1558 ms Ip = 43596 (67%)

Model: Ecolde Ágata verde	Number: 30.016
Tester: Sergio Carneros	Date: 35-5-2021
Temperature: 21Deg	Humidity: 70.0%
Manufacturer: Luz Negra S.L	Remarks: 100cm de tira flexible

Spectrum Test Report



Color Parameters:

Chromaticity Coordinate: $x=0.1371$ $y=0.0558$ / $u'=0.1615$ $v'=0.1478$
 CCT=100000K (Duv=0.1685) Dominant WL: $L_d = 467.3nm$ Purity=96.9%
 Ratio: R=0.6% G=15.4% B=84.1%; Peak WL: $L_p=462.5nm$ FWHM=21.2nm
 Render Index: $R_a=0.6$ CRI=0.3 TM30: $R_f=0$ $R_g=-111$
 R1 =0 R2 =0 R3 =0 R4 =0 R5 =5 R6 =0 R7 =0
 R8 =0 R9 =0 R10=0 R11=0 R12=0 R13=0 R14=0 R15=2

Photo Parameters:

Flux = 57.50 lm Eff. : 12.70 lm/W Fe = 893.5 mW Scotopic:933.54 S/P:16.235

Electrical parameters:

V = 11.998 V I = 0.3773 A P = 4.527 W PF = 1.000

Status: Integral T = 779 ms Ip = 46459 (71%)

Model: Ecoled Ágata Azul	Number: 30.016
Tester: Sergio Carneros	Date: 25-5-2021
Temperature: 21Deg	Humidity: 70.0%
Manufacturer: Luz Negra S.L	Remarks: 100cm de tira flexible