

## MEDIA LUMINOSIDAD

Ref: 33.011 4200°K  
 Ref: 33.012 3200°K  
 Ref: 33.013 2850°K

Tira flexible serie "PREMIUM RETAIL"

IP20 con 126 leds/metro 3014SMD.

Requiere uso de led profile para disipación.

Cinta térmica disipadora incluida.

PCB 10mm

Estabilizador de corriente.

CRI>90

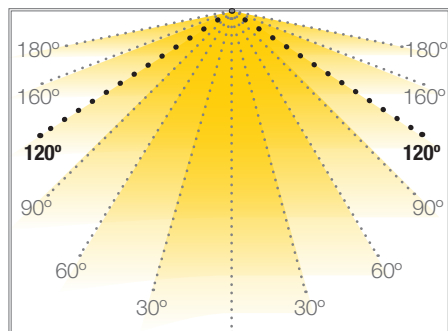
Uso diario máximo recomendado: 18h

Conexión máxima en circuito abierto: 7.5m

Conexión máxima en circuito cerrado: 15m

Vida útil: 50.000h\*

\*En función de la disipación del perfil, de las horas diarias trabajadas y de la temperatura externa ambiental de trabajo.



## HIERRO

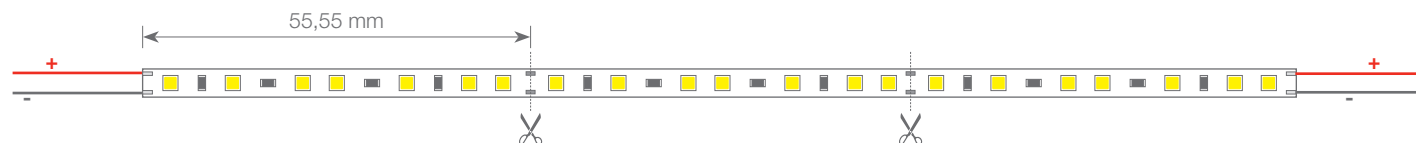
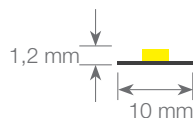
## TIRAS FLEXIBLES



<b>W 16</b>		<b>24V</b>				<b>18h máx.</b>
potencia	120°	voltaje	IP20	55.55 mm	interior	trabajo

Potencia (W)	16W/m
Voltaje (V)	24V
Tipo Led	SMD3014
Lumens (4200°K)	1768 Lm/m
Lumens (3200°K)	1626 Lm/m
Lumens (2850°K)	1466 Lm/m
CRI	>90
Emisión de luz	120°
Estanqueidad (IP)	IP20
Nº leds/m	126
Medidas	5000x10x1.2mm
Cortable	cada 55.55mm
PCB	10mm
Temperatura trabajo	-40°C / +60°C
Apto para	interior
Embalaje	1 rollo/5m
Garantía	4 años

Aprobado por:

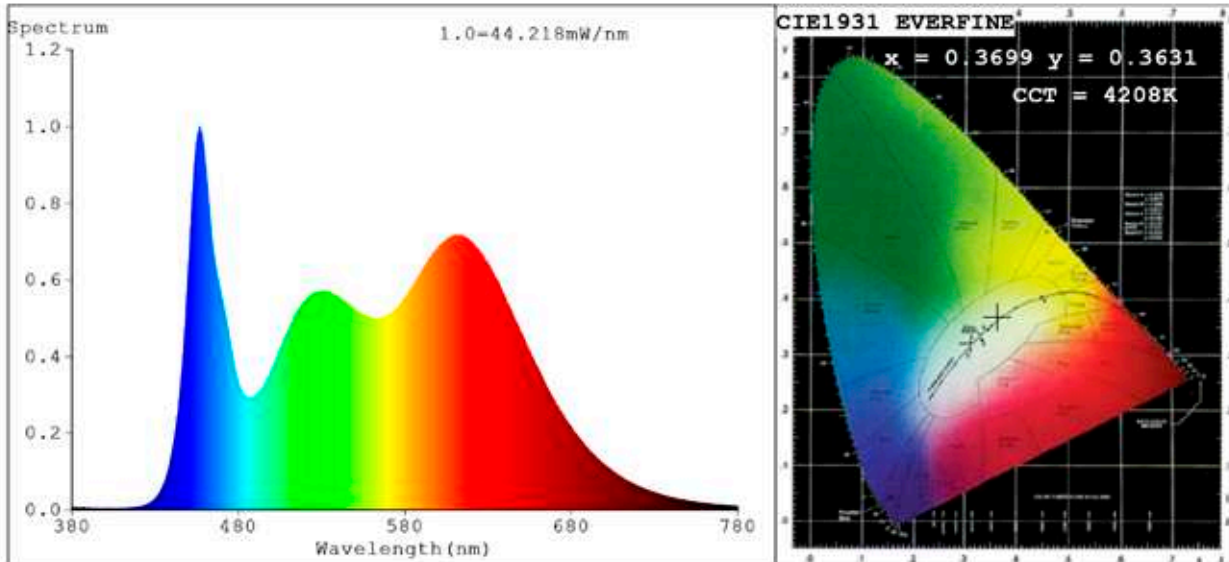


**BARCELONA**  
 C/ Carles Buhigues, 13  
 08420 Canovelles  
 Info@luznegra.net  
 Tel: +34 938 402 598

**MADRID**  
 C/ Adaptación, 27  
 28906 Getafe  
 centro@luznegra.net  
 Tel: +34 916 416 081

**PARIS**  
 113 Avenue Joffre  
 77450 Esbly  
 france@luznegra.net  
 Tel: +33 (0) 160 426 585

**Spectrum Test Report**



**Color Parameters:**

Chromaticity Coordinate:  $x=0.3699$   $y=0.3631$   $u'=0.2236$   $v'=0.4938$   
 CCT=4208K (Duv=-0.0033) Dominant WL:Ld =580.6nm Purity=19.9%  
 Ratio:R=20.7% G=74.4% B=4.9%;;Peak WL:Lp=457.0nm FWHM=24.1nm  
 Render Index:Ra=94.1 CRI=92.0 TM30:Rf=89 Rg=99  
 R1 =96 R2 =96 R3 =98 R4 =96 R5 =95 R6 =92 R7 =91  
 R8 =88 R9 =77 R10=96 R11=98 R12=70 R13=95 R14=99 R15=96

**Photo Parameters:**

Flux = 1768 lm Eff. : 109.83 lm/W Fe = 5.871 W Scotopic:3439.3 S/P:1.9455

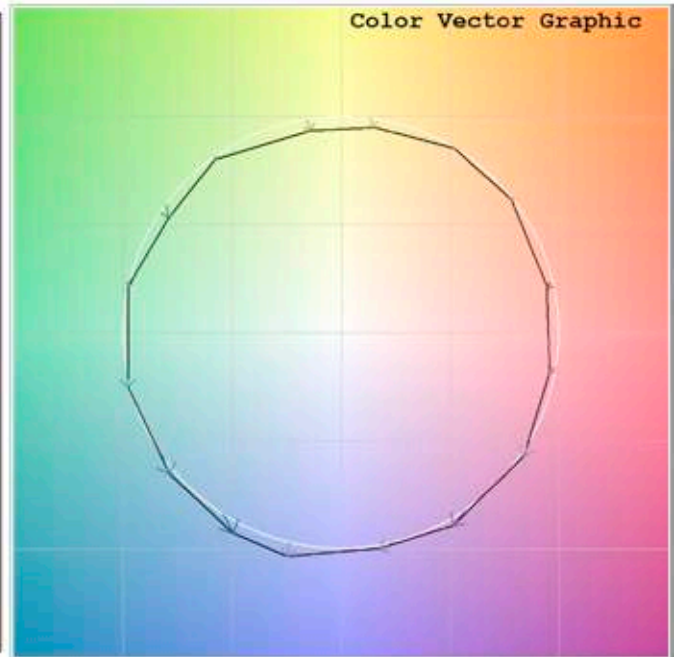
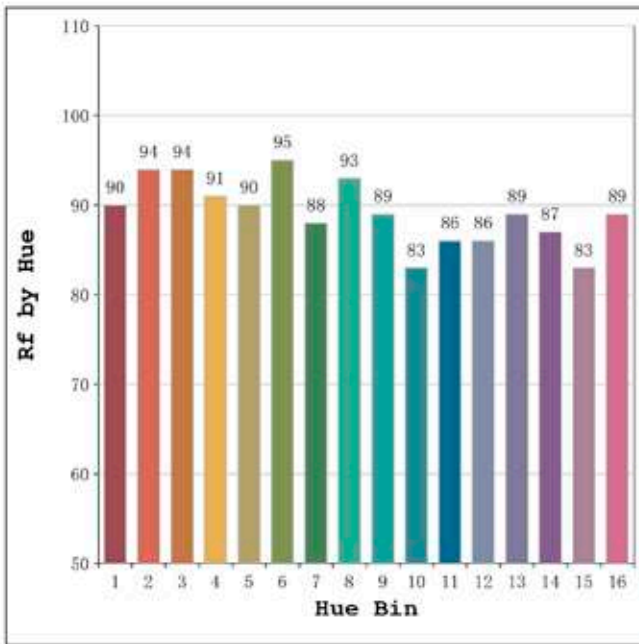
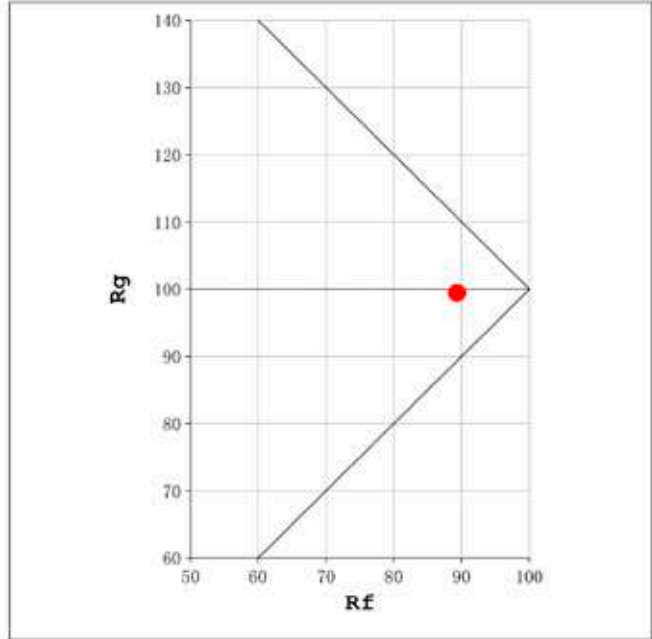
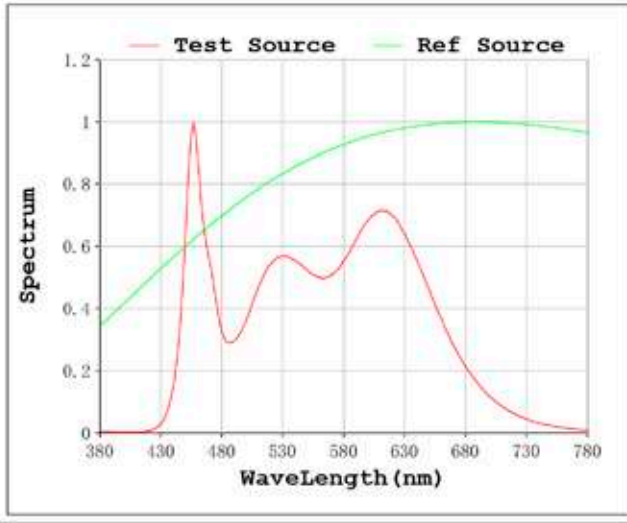
**Electrical parameters:**

V = 23.998 V I = 0.6707 A P = 16.10 W PF = 1.000

Status: Integral T = 630 ms Ip = 42141 (64%)

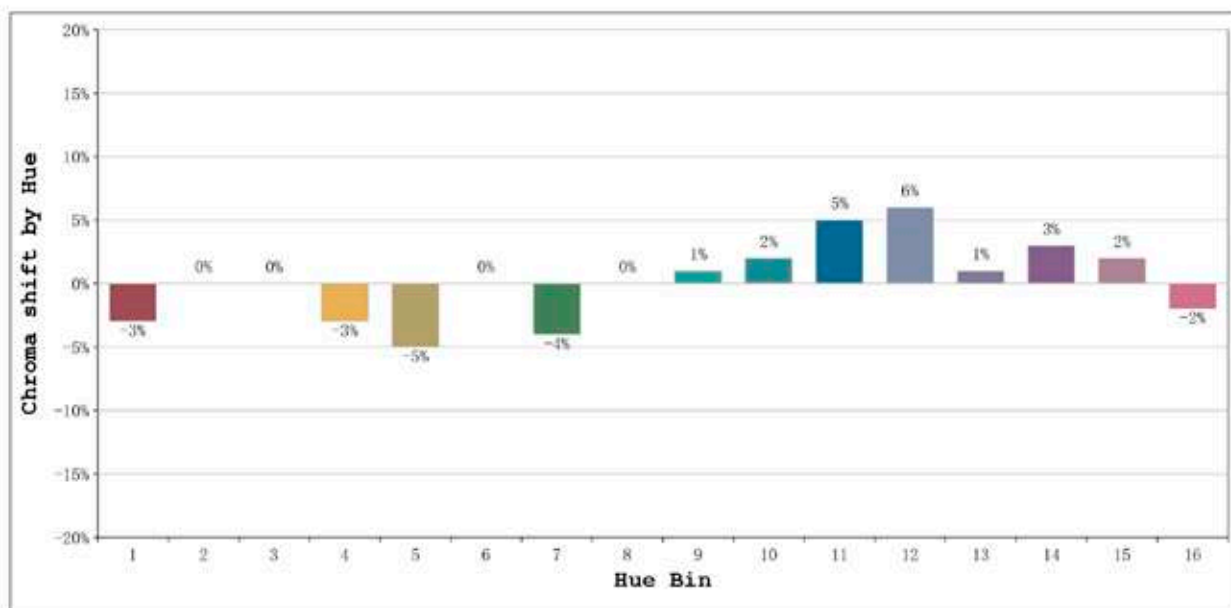
Model:Ecoled Hierro 4200K	Number: 33.011
Tester:Sergio Carneros	Date:25-5-2021
Temperature:27Deg	Humidity:57%
Manufacturer:Luz Negra S.L.	Remarks:100cm de tira flexible

Rf: 89      CCT: 4208 K      u': 0.2236  
Rg: 99      Duv: -0.0033      v': 0.4938



Model:Ecoled Hierro 4200K  
Tester:Sergio Careros  
Temperature:27Deg  
Manufacturer:Luz Negra S.L.

Number: 33.011  
Date:25-5-2021  
Humidity:57%  
Remarks:100cm de tira flexible

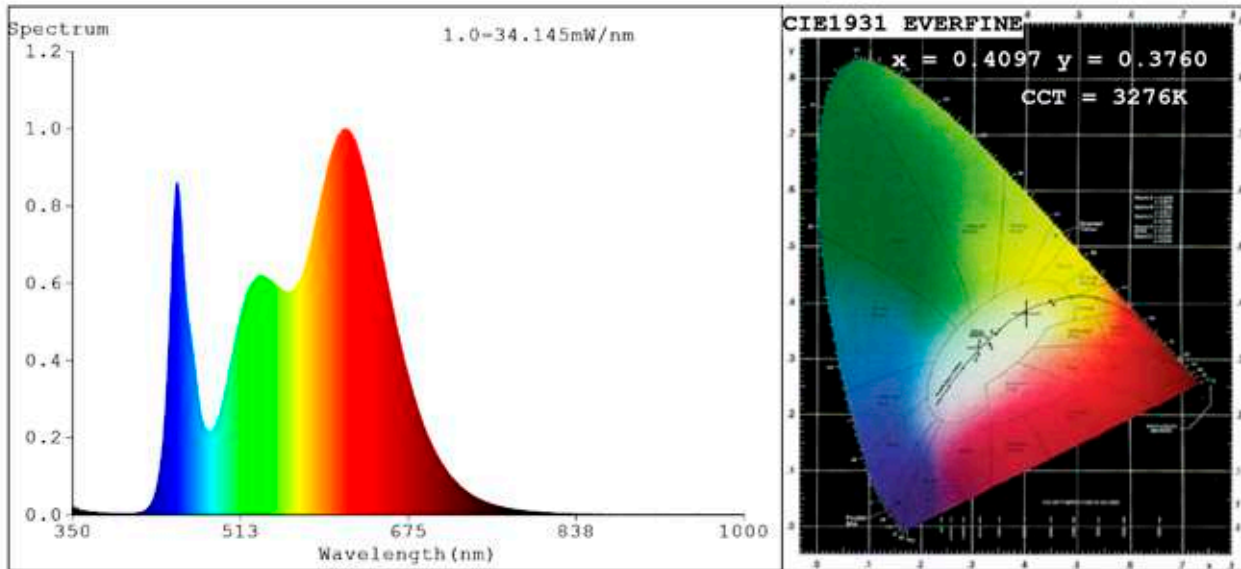


Hue Bin	Hue Angle	Rf	Graphic shift(%)	
			Chroma	Hue
1	0.0° - 22.5°	90	-3	2
2	22.5° - 45.0°	94	0	1
3	45.0° - 67.5°	94	0	1
4	67.5° - 90.0°	91	-3	-2
5	90.0° - 112.5°	90	-5	0
6	112.5° - 135.0°	95	0	2
7	135.0° - 157.5°	88	-4	4
8	157.5° - 180.0°	93	0	4
9	180.0° - 202.5°	89	1	7
10	202.5° - 225.0°	83	2	9
11	225.0° - 247.5°	86	5	9
12	247.5° - 270.0°	86	6	0
13	270.0° - 292.5°	89	1	-6
14	292.5° - 315.0°	87	3	-7
15	315.0° - 337.5°	83	2	-6
16	337.5° - 360.0°	89	-2	-1

Model:Ecoled Hierro 4200K  
 Tester:Sergio Carneros  
 Temperature:27Deg  
 Manufacturer:Luz Negra S.L.

Number: 33.011  
 Date:25-5-2021  
 Humidity:57%  
 Remarks:100cm de tira flexible

**Spectrum Test Report**



**Color Parameters:**

Chromaticity Coordinate:  $x=0.4097$   $y=0.3760$  /  $u'=0.2449$   $v'=0.5056$   
 CCT=3276K (Duv=-0.0075) Dominant WL:Ld =585.3nm Purity=35.8%  
 Ratio:R=24.4% G=72.4% B=3.2%; Peak WL:Lp=615.4nm FWHM=151.0nm  
 Render Index:Ra=94.4 CRI=91.9 TM30:Rf=90 Rg=105  
 R1 =98 R2 =98 R3 =97 R4 =96 R5 =99 R6 =93 R7 =91  
 R8 =85 R9 =67 R10=97 R11=91 R12=82 R13=97 R14=97 R15=96

**Photo Parameters:**

Flux = 1626 lm Eff. : 97.97 lm/W Fe = 5.411 W Scotopic:2590.6 S/P:1.5935

**Electrical parameters:**

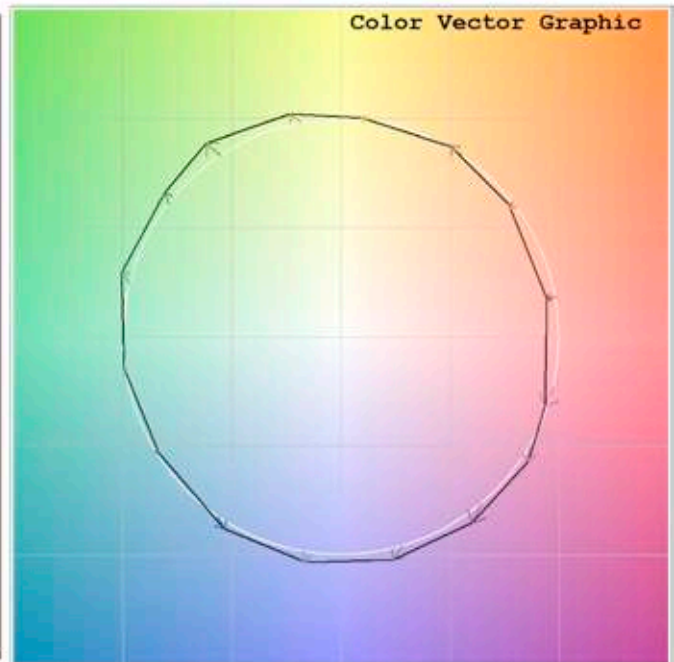
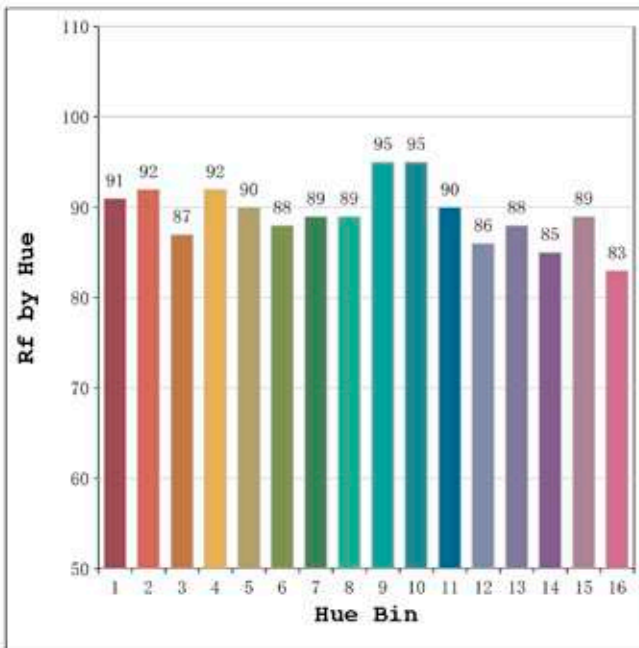
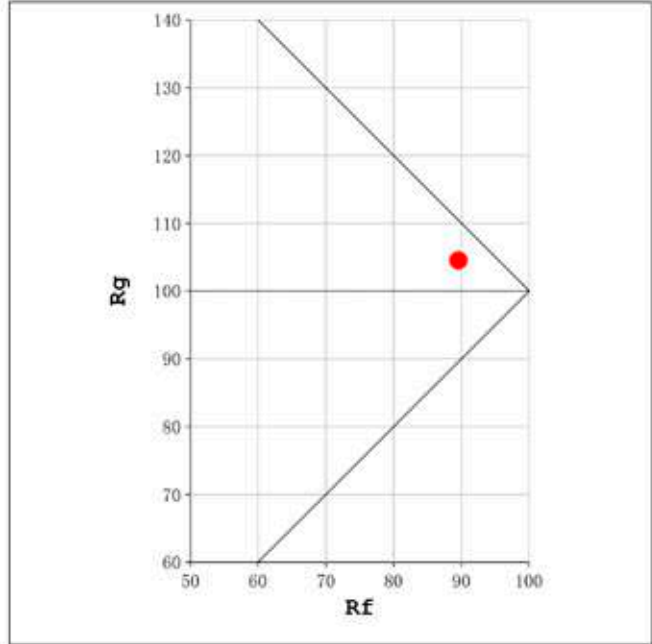
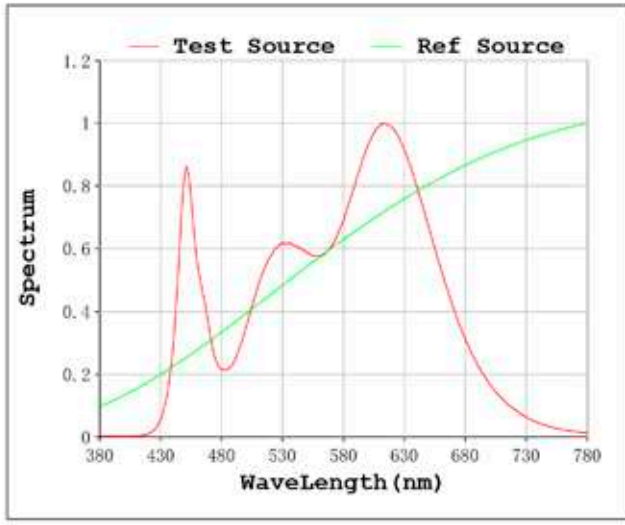
V = 23.998 V I = 0.6915 A P = 16.59 W PF = 1.000

Status: Integral T = 500 ms Ip = 35931 (55%)

Model:Ecoled Hierro 3200K  
 Tester:Sergio Carneros  
 Temperature:21Deg  
 Manufacturer:Luz Negra S.L

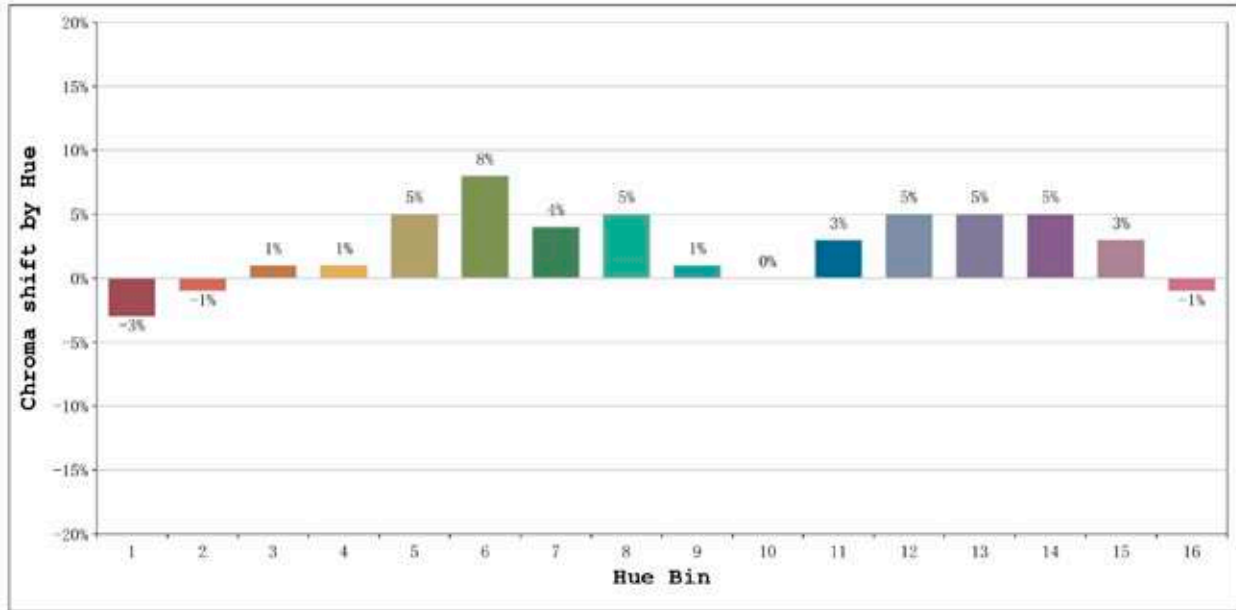
Number: 33.012  
 Date:25-5-2021  
 Humidity:57%  
 Remarks:100cm de tira flexible

Rf: 90      CCT: 3276 K      u': 0.2449  
Rg: 105      Duv: -0.0075      v': 0.5056



Model:Ecoled Hierro 3200K  
Tester:Sergio Carneros  
Temperature:21Deg  
Manufacturer:Luz Negra S.L

Number: 33.012  
Date:25-5-2021  
Humidity:57%  
Remarks:100cm de tira flexible

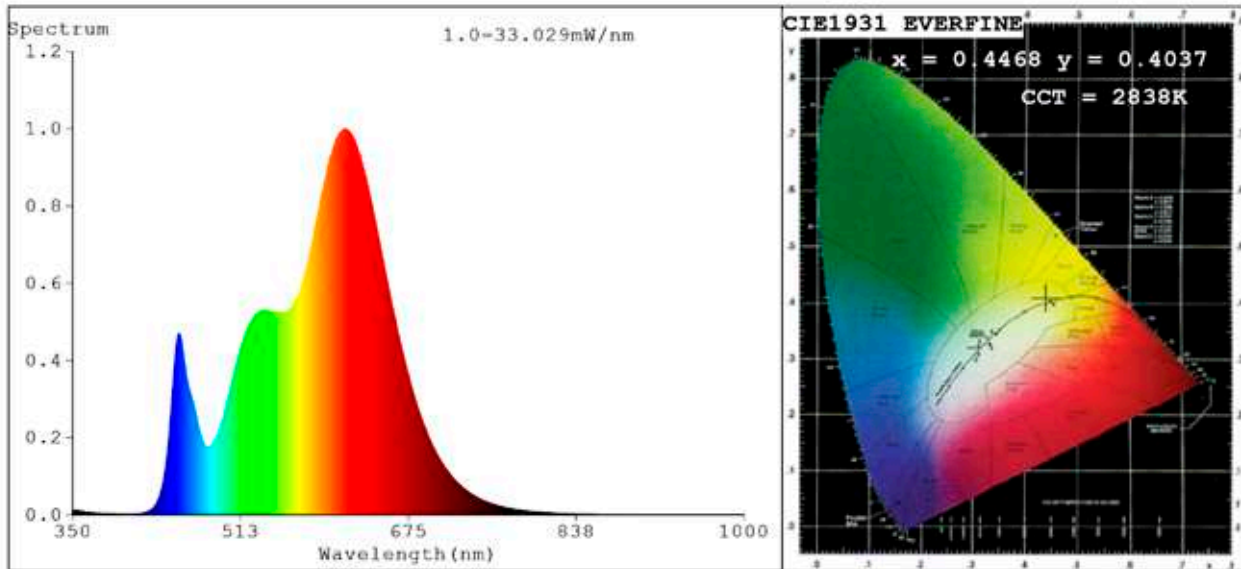


Hue Bin	Hue Angle	Rf	Graphic shift(%)	
			Chroma	Hue
1	0.0° - 22.5°	91	-3	0
2	22.5° - 45.0°	92	-1	3
3	45.0° - 67.5°	87	1	6
4	67.5° - 90.0°	92	1	3
5	90.0° - 112.5°	90	5	4
6	112.5° - 135.0°	88	8	2
7	135.0° - 157.5°	89	4	-2
8	157.5° - 180.0°	89	5	-3
9	180.0° - 202.5°	95	1	0
10	202.5° - 225.0°	95	0	2
11	225.0° - 247.5°	90	3	6
12	247.5° - 270.0°	86	5	2
13	270.0° - 292.5°	88	5	-4
14	292.5° - 315.0°	85	5	-7
15	315.0° - 337.5°	89	3	-5
16	337.5° - 360.0°	83	-1	-9

Model:Ecoled Hierro 3200K  
Tester:Sergio Carneros  
Temperature:21Deg  
Manufacturer:Luz Negra S.L

Number: 33.012  
Date:25-5-2021  
Humidity:57%  
Remarks:100cm de tira flexible

**Spectrum Test Report**



**Color Parameters:**

Chromaticity Coordinate:  $x=0.4468$   $y=0.4037$  /  $u'=0.2571$   $v'=0.5227$   
 CCT=2838K (Duv=-0.0013) Dominant WL:Ld =584.0nm Purity=55.3%  
 Ratio:R=26.1% G=71.3% B=2.6%; Peak WL:Lp=613.1nm FWHM=139.7nm  
 Render Index:Ra=93.1 CRI=90.3 TM30:Rf=90 Rg=100  
 R1 =96 R2 =99 R3 =98 R4 =96 R5 =96 R6 =95 R7 =88  
 R8 =76 R9 =47 R10=96 R11=97 R12=84 R13=98 R14=99 R15=88

**Photo Parameters:**

Flux = 1466 lm Eff. : 94.12 lm/W Fe = 4.745 W Scotopic:2013.5 S/P:1.3731

**Electrical parameters:**

V = 23.998 V I = 0.6492 A P = 15.58 W PF = 1.000

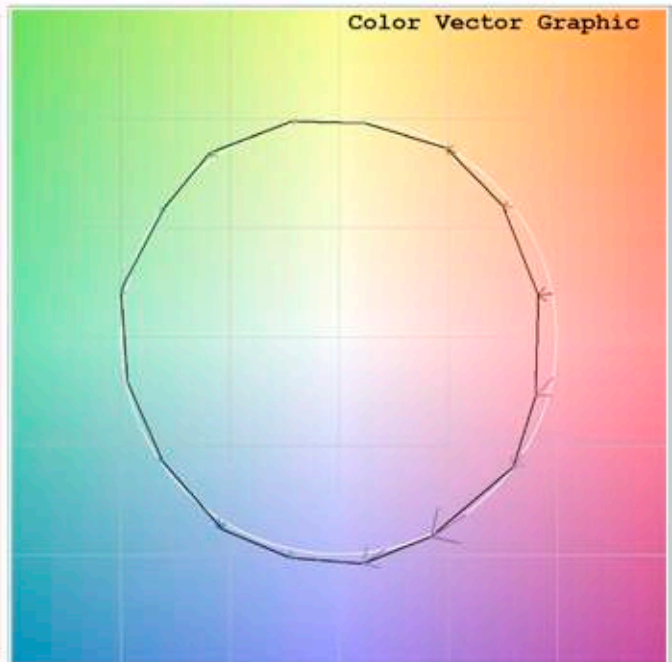
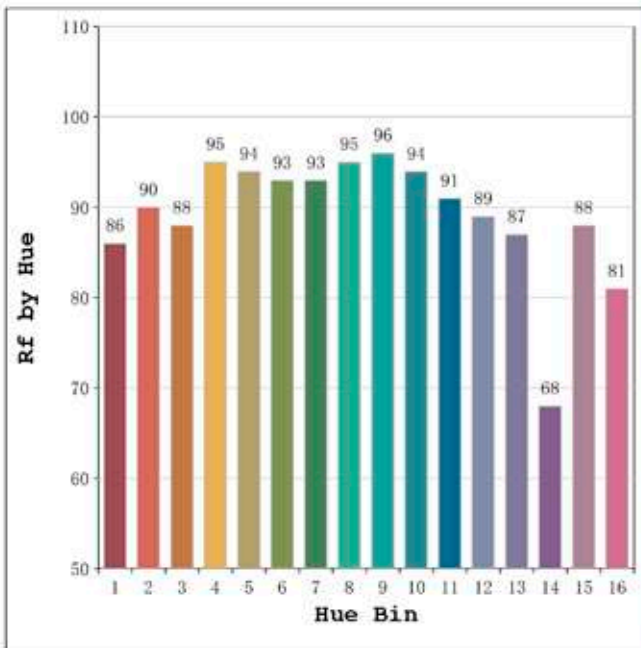
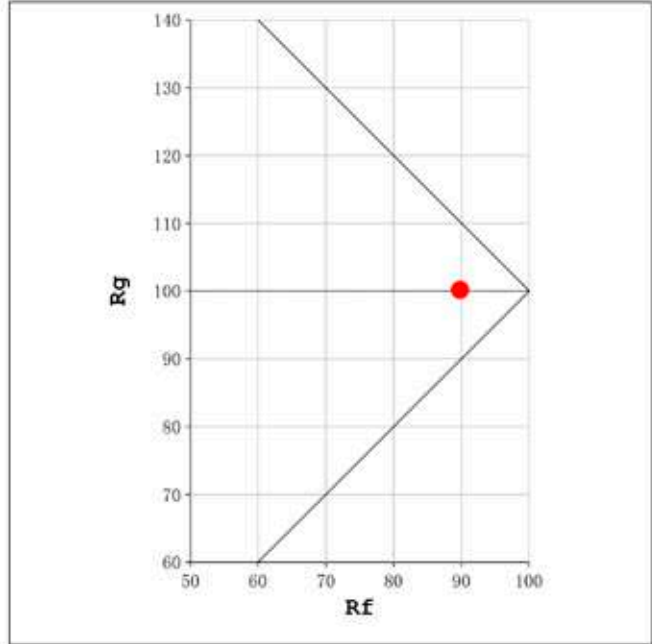
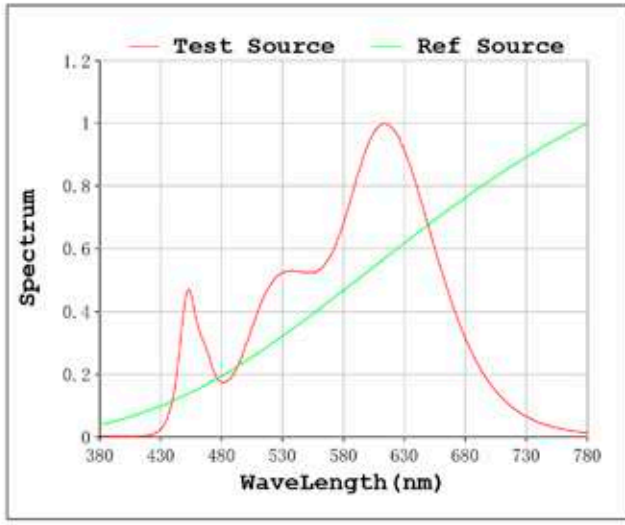
Status: Integral T = 632 ms Ip = 43892 (67%)

Model: Ecoled Hierro 2850K  
 Tester:Sergio Carneros  
 Temperature:25Deg  
 Manufacturer:Luz Negra S.L

Number: 33.013  
 Date:25-5-2021  
 Humidity:57%  
 Remarks:100cm de tira flexible

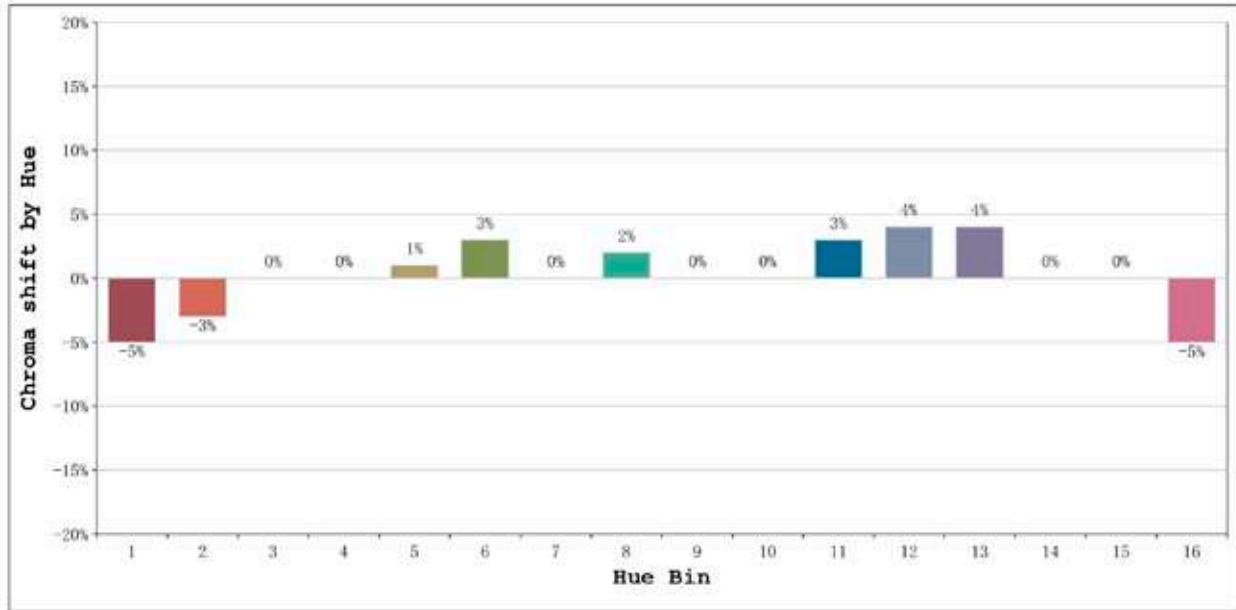


Rf: 90      CCT: 2838 K      u': 0.2571  
Rg: 100      Duv: -0.0013      v': 0.5227



Model: Ecoled Hierro 2850K  
Tester: Sergio Carneros  
Temperature: 25Deg  
Manufacturer: Luz Negra S.L

Number: 33.013  
Date: 25-5-2021  
Humidity: 57%  
Remarks: 100cm de tira flexible



Hue Bin	Hue Angle	Rf	Graphic shift(%)	
			Chroma	Hue
1	0.0° - 22.5°	86	-5	1
2	22.5° - 45.0°	90	-3	3
3	45.0° - 67.5°	88	0	5
4	67.5° - 90.0°	95	0	1
5	90.0° - 112.5°	94	1	3
6	112.5° - 135.0°	93	3	2
7	135.0° - 157.5°	93	0	-2
8	157.5° - 180.0°	95	2	-1
9	180.0° - 202.5°	96	0	1
10	202.5° - 225.0°	94	0	3
11	225.0° - 247.5°	91	3	4
12	247.5° - 270.0°	89	4	0
13	270.0° - 292.5°	87	4	-10
14	292.5° - 315.0°	68	0	-18
15	315.0° - 337.5°	88	0	-6
16	337.5° - 360.0°	81	-5	-9

Model: Ecoled Hierro 2850K  
 Tester: Sergio Carneros  
 Temperature: 25Deg  
 Manufacturer: Luz Negra S.L

Number: 33.013  
 Date: 25-5-2021  
 Humidity: 57%  
 Remarks: 100cm de tira flexible