

## MEDIA LUMINOSIDAD

Ref: 33.014      4200°K  
 Ref: 33.015      3200°K  
 Ref: 33.016      2850°K

Tira flexible serie "PREMIUM RETAIL"

IP20 con 196 leds/metro 3014SMD.

Requiere uso de led profile para disipación.

**Cinta térmica disipadora incluida.**

**PCB 10mm**

**Estabilizador de corriente.**

**CRI>90**

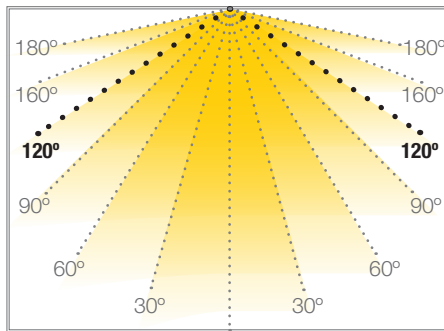
Uso diario máximo recomendado: 18h

Conexión máxima en circuito abierto: 5m

Conexión máxima en circuito cerrado: 10m

Vida útil: 50.000h\*

\*En función de la disipación del perfil, de las horas diarias trabajadas y de la temperatura externa ambiental de trabajo.



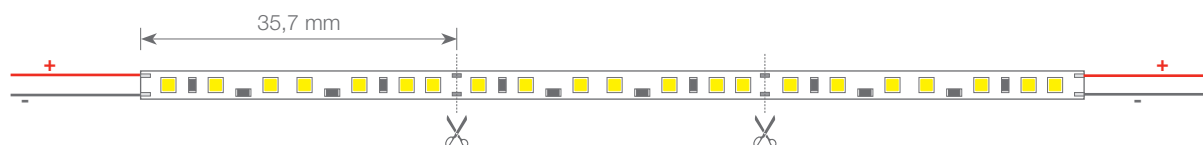
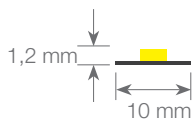
## LANZAROTE

## TIRAS FLEXIBLES



Potencia (W)	18W/m
Voltaje (V)	24V
Tipo Led	SMD3014
Lumens (4200°K)	2100 Lm/m
Lumens (3200°K)	2000 Lm/m
Lumens (2850°K)	1850 Lm/m
CRI	>90
Emisión de luz	120°
Estanqueidad (IP)	IP20
Nº leds/m	196
Medidas	5000x10x1,2mm
Cortable	cada 35,7mm
PCB	10mm
Temperatura trabajo	-40°C / +60°C
Apto para	interior
Embalaje	1 rollo/5m
Garantía	4 años

Aprobado por: 

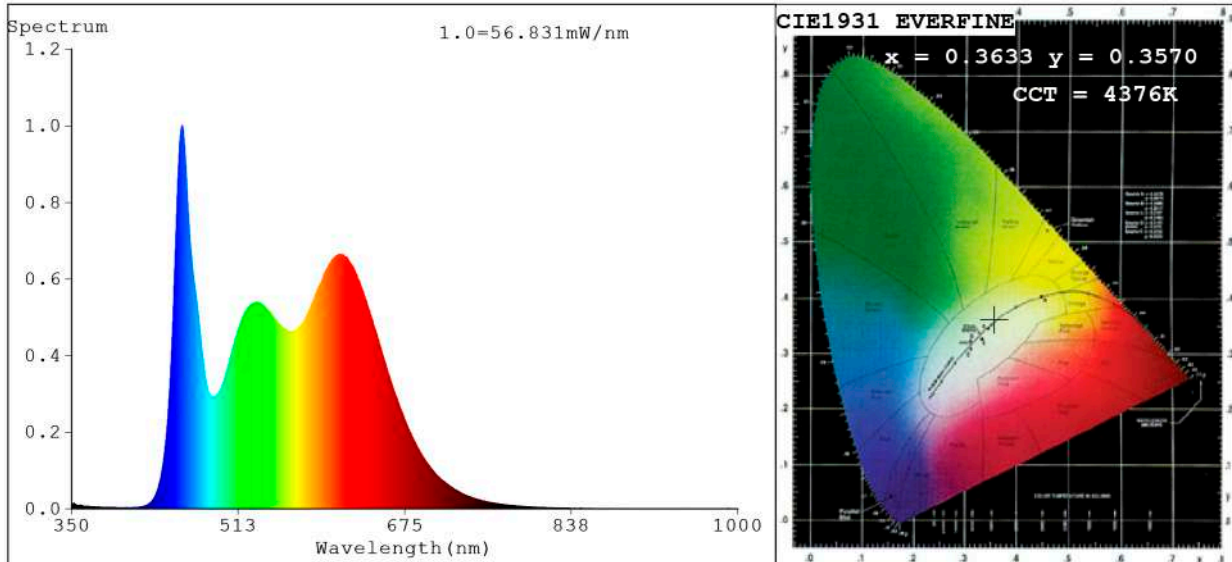


**BARCELONA**  
 C/ Carles Buigues, 13  
 08420 Canovelles  
 Info@luznegra.net  
 Tel: +34 938 402 598

**MADRID**  
 C/ Adaptación, 27  
 28906 Getafe  
 centro@luznegra.net  
 Tel: +34 916 416 081

**PARIS**  
 113 Avenue Joffre  
 77450 Esbly  
 france@luznegra.net  
 Tel: +33 (0) 160 426 585

**Spectrum Test Report**



**Color Parameters:**

Chromaticity Coordinate: x=0.3633 y=0.3570 / u'=0.2216 v'=0.4900  
 CCT=4376K (Duv=-0.0041) Dominant WL:Ld =581.0nm Purity=16.1%  
 Ratio: R=20.5% G=74.2% B=5.2% ; Peak WL:Lp=458.0nm FWHM=24.7nm  
 Render Index: Ra=93.1 CRI=91.4 TM30: Rf=89 Rg=100  
 R1 =94 R2 =95 R3 =98 R4 =95 R5 =94 R6 =91 R7 =90  
 R8 =90 R9 =85 R10=92 R11=97 R12=69 R13=93 R14=99 R15=95

**Photo Parameters:**

Flux = 2127 lm Eff. : 117.52 lm/W Fe = 7.187 W Scotopic: 4289.7 S/P: 2.0172

**Electrical parameters:**

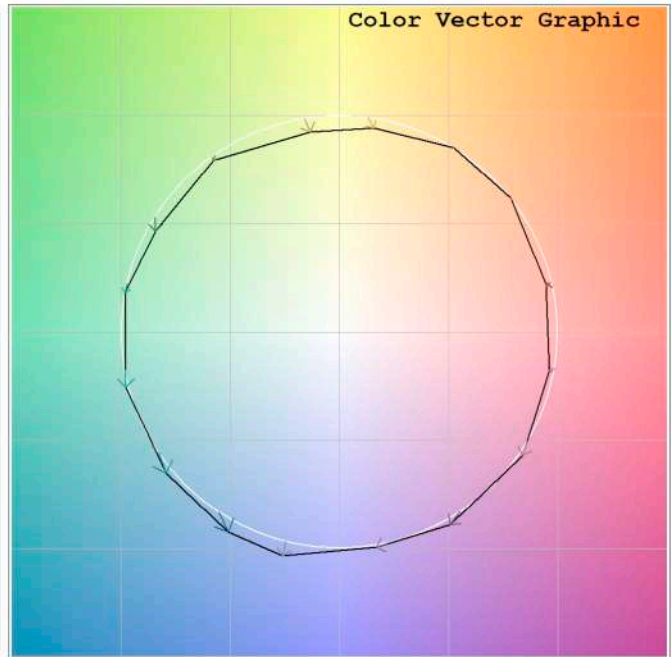
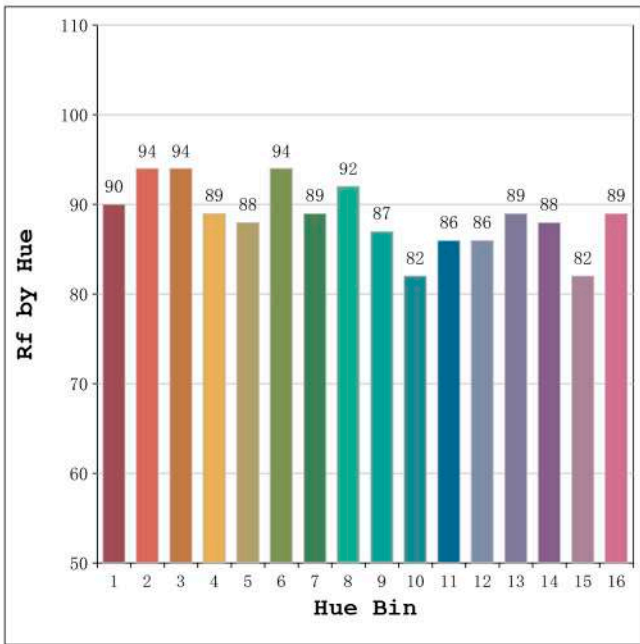
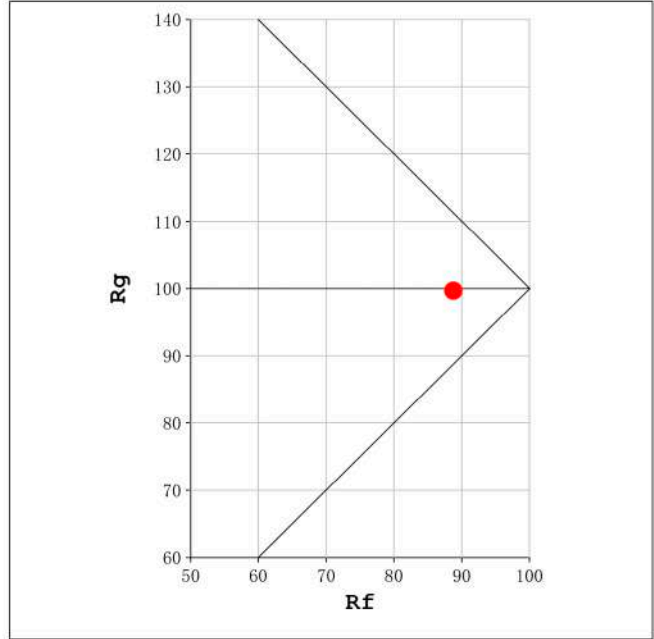
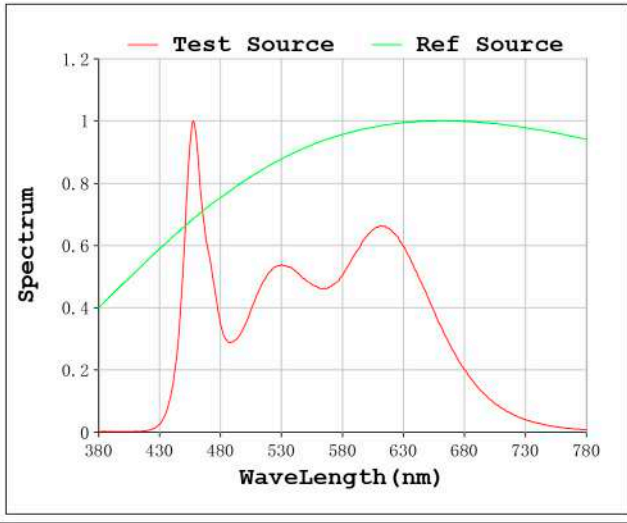
V = 23.998 V I = 0.7540 A P = 18.09 W PF = 1.000

Status: Integral T = 500 ms Ip = 47964 (73%)

---

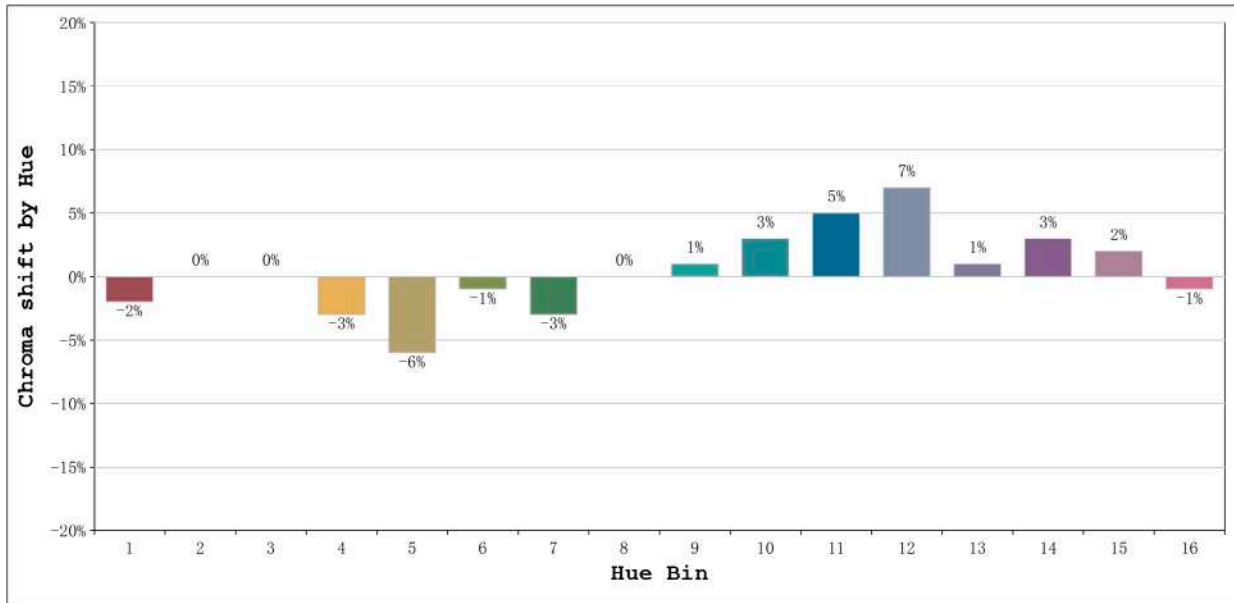
Model: Ecoled Lanzarote 4200K	Number: 33.014
Tester: Sergio Carneros	Date: 25-5-2021
Temperature: 20Deg	Humidity: 57%
Manufacturer: Luz Negra S.L	Remarks: 100cm de tira flexible

Rf: 89      CCT: 4376 K      u': 0.2216  
Rg: 100      Duv: -0.0041      v': 0.4900



Model:Ecoled Lanzarote 4200K  
Tester:Sergio Carneros  
Temperature:20Deg  
Manufacturer:Luz Negra S.L

Number: 33.014  
Date:25-5-2021  
Humidity:57%  
Remarks:100cm de tira flexible

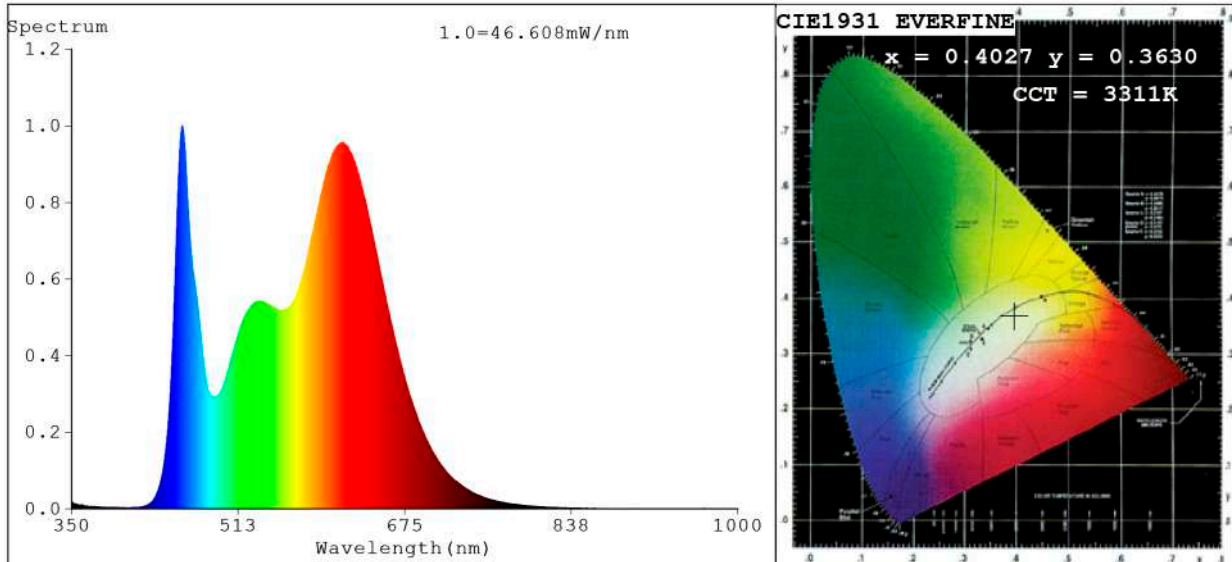


Hue Bin	Hue Angle	Rf	Graphic shift (%)	
			Chroma	Hue
1	0.0° - 22.5°	90	-2	2
2	22.5° - 45.0°	94	0	1
3	45.0° - 67.5°	94	0	0
4	67.5° - 90.0°	89	-3	-3
5	90.0° - 112.5°	88	-6	0
6	112.5° - 135.0°	94	-1	2
7	135.0° - 157.5°	89	-3	5
8	157.5° - 180.0°	92	0	5
9	180.0° - 202.5°	87	1	8
10	202.5° - 225.0°	82	3	10
11	225.0° - 247.5°	86	5	9
12	247.5° - 270.0°	86	7	0
13	270.0° - 292.5°	89	1	-6
14	292.5° - 315.0°	88	3	-6
15	315.0° - 337.5°	82	2	-5
16	337.5° - 360.0°	89	-1	0

Model:Ecoled Lanzarote 4200K  
 Tester:Sergio Carneros  
 Temperature:20Deg  
 Manufacturer:Luz Negra S.L

Number: 33.014  
 Date:25-5-2021  
 Humidity:57%  
 Remarks:100cm de tira flexible

**Spectrum Test Report**



**Color Parameters:**

Chromaticity Coordinate: x=0.4027 y=0.3630/u'=0.2459 v'=0.4987  
 CCT=3311K(Duv=-0.0121) Dominant WL:Ld =588.5nm Purity=29.7%  
 Ratio:R=24.9% G=70.7% B=4.4%;;Peak WL:Lp=458.0nm FWHM=24.7nm  
 Render Index:Ra=89.5 CRI=87.6 TM30:Rf=89 Rg=103  
 R1 =93 R2 =90 R3 =90 R4 =97 R5 =92 R6 =83 R7 =86  
 R8 =85 R9 =75 R10=83 R11=94 R12=71 R13=91 R14=97 R15=97

**Photo Parameters:**

Flux = 2072 lm Eff. : 114.60 lm/W Fe = 7.139 W Scotopic:3571.7 S/P:1.7238

**Electrical parameters:**

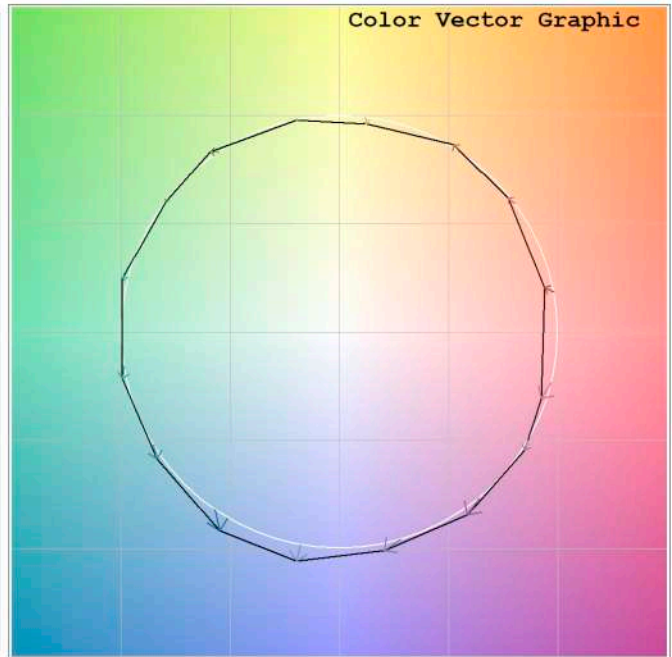
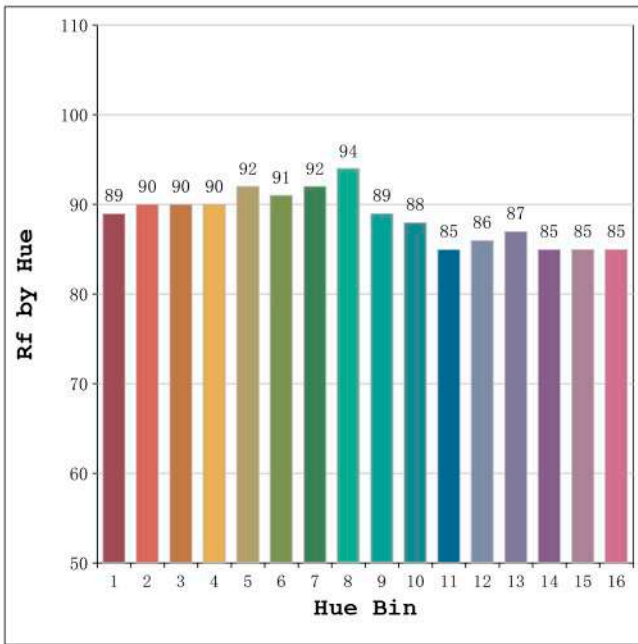
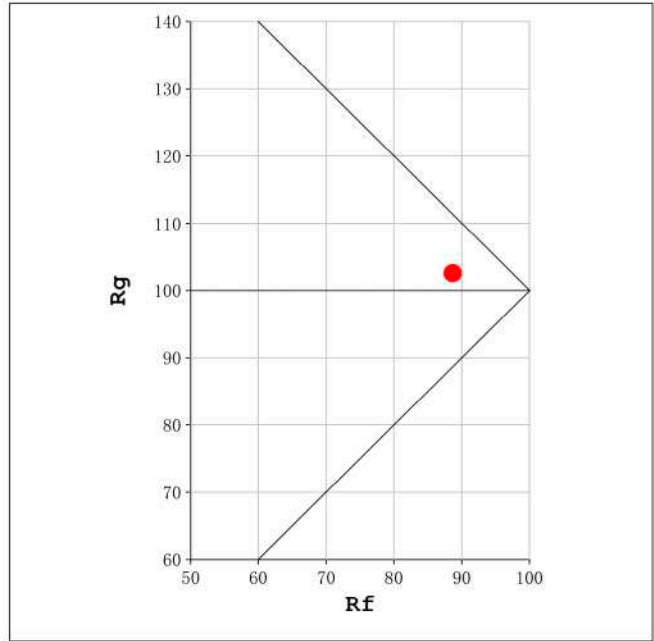
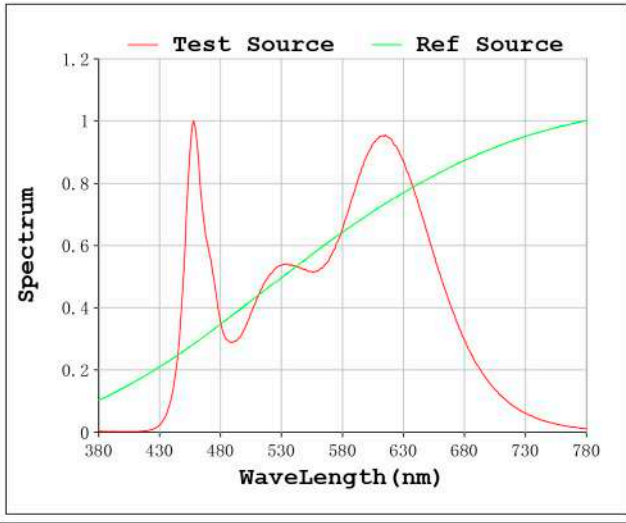
V = 23.998 V I = 0.7534 A P = 18.08 W PF = 1.000

Status: Integral T = 480 ms Ip = 38780 (59%)

---

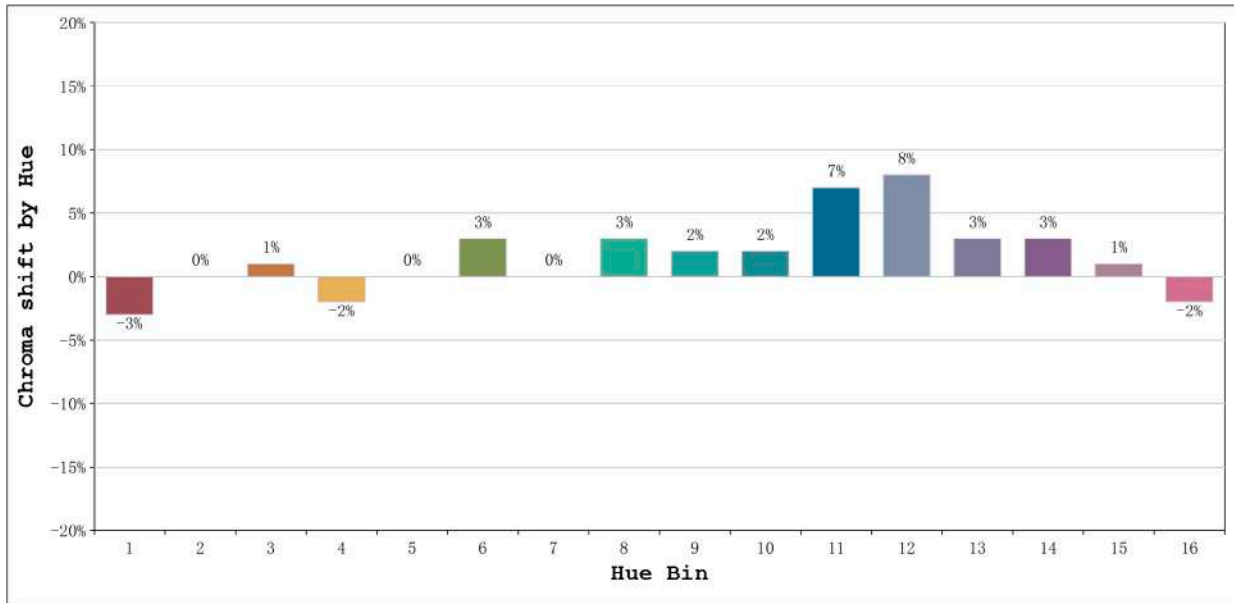
Model:Ecoled Lanzarote 3200K	Number: 33.015
Tester:Sergio Carneros	Date:25-5-2021
Temperature:25Deg	Humidity:57%
Manufacturer:Luz Negra S.L	Remarks:100cm de tira flexible

Rf: 89      CCT: 3311 K      u': 0.2459  
Rg: 103      Duv: -0.0121      v': 0.4987



Model:Ecoled Lanzarote 3200K  
Tester:Sergio Careros  
Temperature:25Deg  
Manufacturer:Luz Negra S.L

Number: 33.015  
Date:25-5-2021  
Humidity:57%  
Remarks:100cm de tira flexible

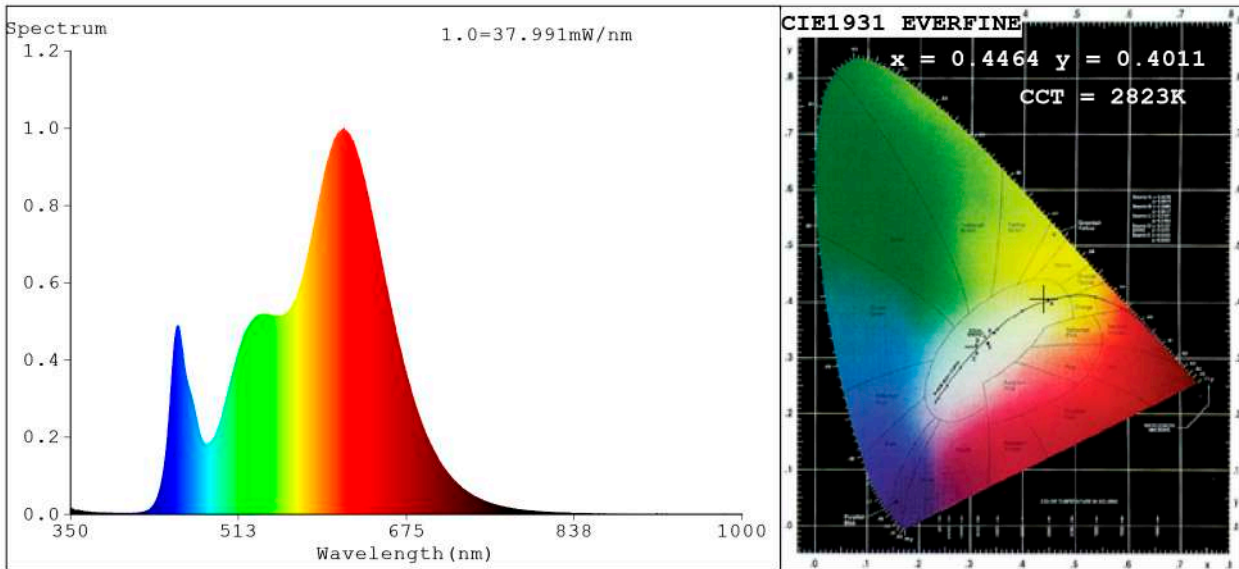


Hue Bin	Hue Angle	Rf	Graphic shift (%)	
			Chroma	Hue
1	0.0° - 22.5°	89	-3	3
2	22.5° - 45.0°	90	0	4
3	45.0° - 67.5°	90	1	4
4	67.5° - 90.0°	90	-2	0
5	90.0° - 112.5°	92	0	1
6	112.5° - 135.0°	91	3	3
7	135.0° - 157.5°	92	0	1
8	157.5° - 180.0°	94	3	0
9	180.0° - 202.5°	89	2	6
10	202.5° - 225.0°	88	2	6
11	225.0° - 247.5°	85	7	7
12	247.5° - 270.0°	86	8	0
13	270.0° - 292.5°	87	3	-7
14	292.5° - 315.0°	85	3	-8
15	315.0° - 337.5°	85	1	-3
16	337.5° - 360.0°	85	-2	-7

Model:Ecoled Lanzarote 3200K  
 Tester:Sergio Carneros  
 Temperature:25Deg  
 Manufacturer:Luz Negra S.L

Number: 33.015  
 Date:25-5-2021  
 Humidity:57%  
 Remarks:100cm de tira flexible

**Spectrum Test Report**



**Color Parameters:**

Chromaticity Coordinate:  $x=0.4464$   $y=0.4011$  /  $u'=0.2580$   $v'=0.5216$   
 CCT=2823K (Duv=-0.0023) Dominant WL:Ld =584.4nm Purity=54.4%  
 Ratio:R=26.4% G=71.0% B=2.6%; Peak WL:Lp=614.8nm FWHM=137.6nm  
 Render Index:Ra=93.0 CRI=90.5 TM30:Rf=90 Rg=100  
 R1 =96 R2 =99 R3 =97 R4 =96 R5 =97 R6 =94 R7 =88  
 R8 =76 R9 =48 R10=98 R11=97 R12=84 R13=98 R14=99 R15=89

**Photo Parameters:**

Flux = 1666 lm Eff. : 94.38 lm/W Fe = 5.431 W Scotopic:2298.9 S/P:1.3802

**Electrical parameters:**

V = 23.998 V I = 0.7354 A P = 17.65 W PF = 1.000

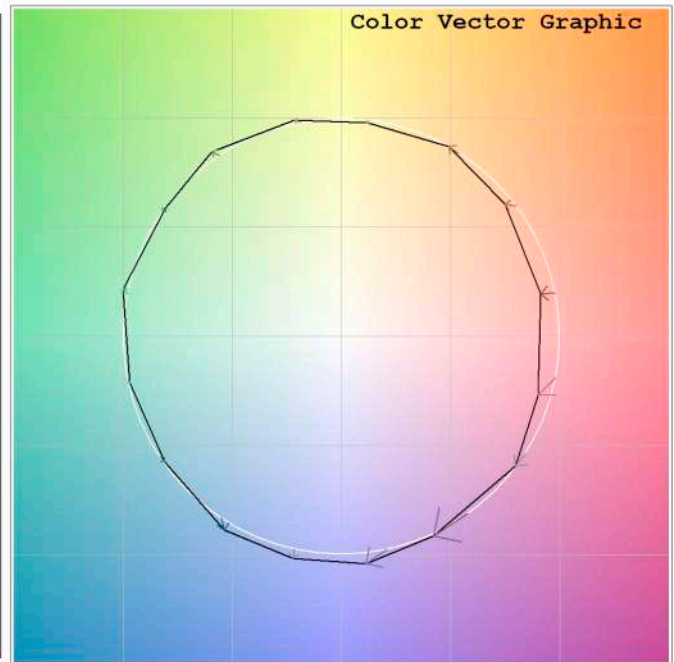
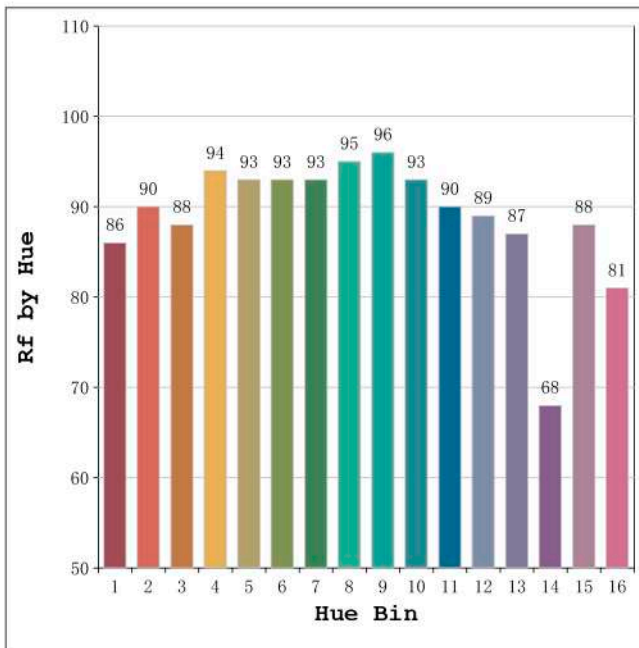
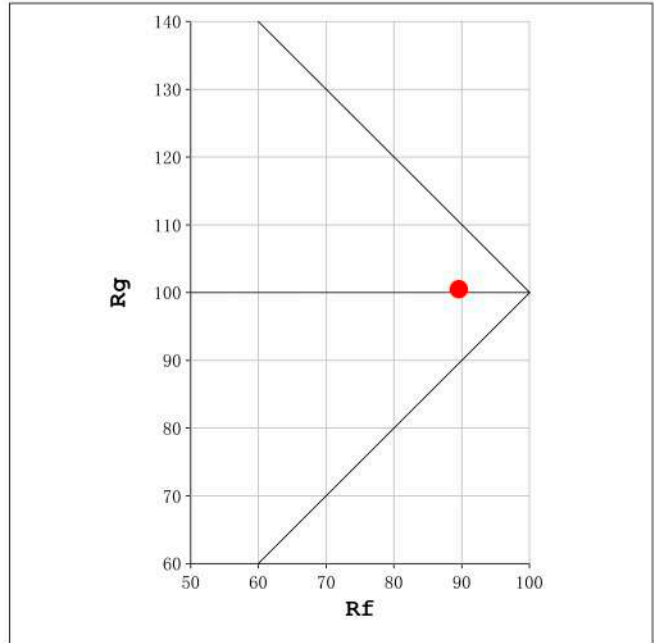
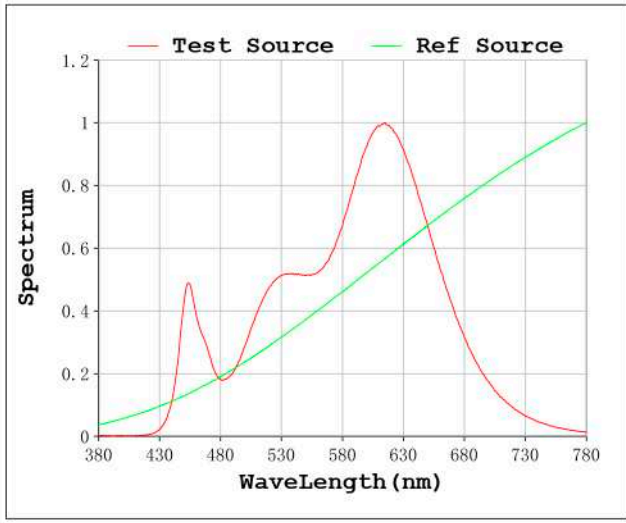
WHITE:ANSI\_2700K

Status: Integral T = 539 ms Ip = 42931 (66%)

Model:Ecoled Lanzarote 2850K	Number: 33.016
Tester:Sergio Carneros	Date:25-5-2021
Temperature:25Deg	Humidity:57%
Manufacturer:Luz Negra S.L	Remarks:100cm de tira flexible

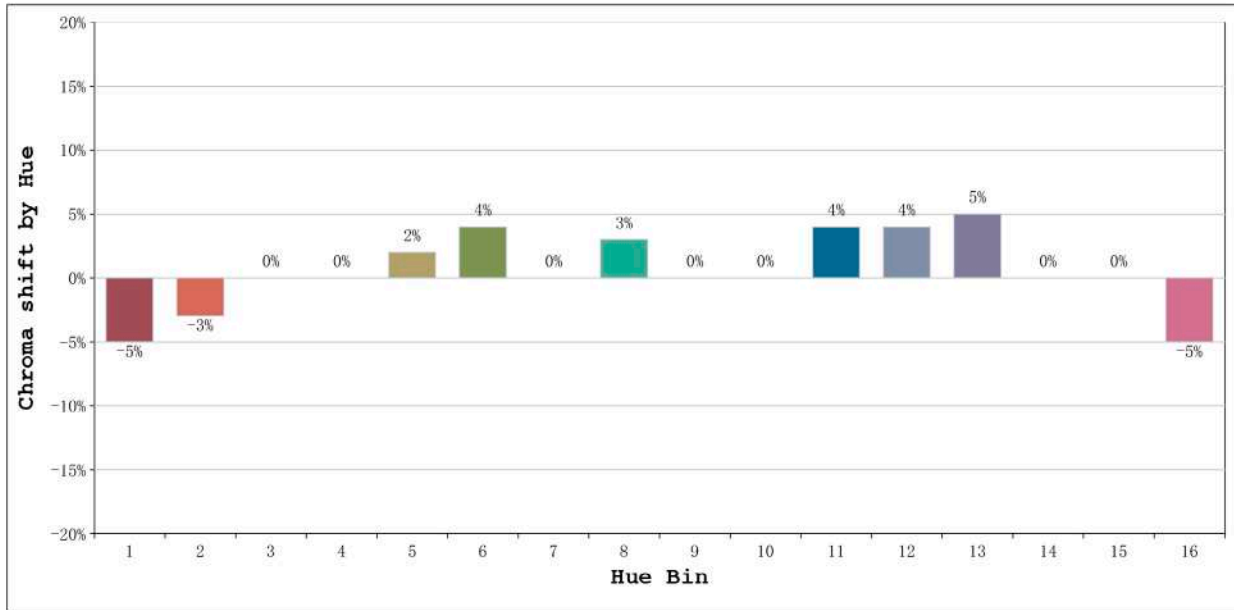


Rf: 90      CCT: 2823 K      u': 0.2580  
Rg: 100      Duv: -0.0023      v': 0.5216



Model:Ecoled Lanzarote 2850K  
Tester:Sergio Carneros  
Temperature:25Deg  
Manufacturer:Luz Negra S.L

Number: 33.016  
Date:25-5-2021  
Humidity:57%  
Remarks:100cm de tira flexible



Hue Bin	Hue Angle	Rf	Graphic shift(%)	
			Chroma	Hue
1	0.0° - 22.5°	86	-5	1
2	22.5° - 45.0°	90	-3	4
3	45.0° - 67.5°	88	0	5
4	67.5° - 90.0°	94	0	1
5	90.0° - 112.5°	93	2	3
6	112.5° - 135.0°	93	4	2
7	135.0° - 157.5°	93	0	-1
8	157.5° - 180.0°	95	3	-1
9	180.0° - 202.5°	96	0	1
10	202.5° - 225.0°	93	0	3
11	225.0° - 247.5°	90	4	4
12	247.5° - 270.0°	89	4	0
13	270.0° - 292.5°	87	5	-10
14	292.5° - 315.0°	68	0	-18
15	315.0° - 337.5°	88	0	-6
16	337.5° - 360.0°	81	-5	-9

Model:Ecoled Lanzarote 2850K  
Tester:Sergio Carneros  
Temperature:25Deg  
Manufacturer:Luz Negra S.L

Number: 33.016  
Date:25-5-2021  
Humidity:57%  
Remarks:100cm de tira flexible